

PCI/ISA DAQ Card

Software Installation Manual

[For Windows 95/98/NT/2000]

Warranty

All products manufactured by ICP DAS are warranted against defective materials for a period of one year from the date of delivery to the original purchaser.

Warning

ICP DAS assumes no liability for damage consequent to the use of this product. ICP DAS reserves the right to change this manual at any time without notice. The information furnished by ICP DAS is believed to be accurate and reliable. However, ICP DAS assumes no responsibility for its use, or for any infringements of patents or other rights of third parties resulting from its use.

Copyright

Copyright 2000 by ICP DAS. All rights are reserved.

Trademark

The names used for identification only may be registered trademarks of their respective companies.

License

The user can use and backup this **software on a single machine**. The user may not reproduce, transfer or distribute this software, or any copy, in whole or in part.

This user's manual describes how to install the software package on Windows 95/98/NT/2000. All of the drivers have their own setup program and have similar installation steps. This manual uses the PCI-TMC12 card as an example.

Run the DAQ card's setup program from user's CD-ROM drive or floppy drive. The directory depends on the user's drive and path. Please follow these steps to finish the software installation. Refer to Figure 1 to 4.

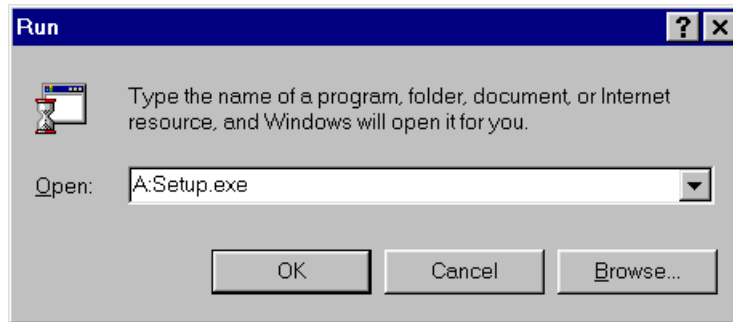


Figure 1. Run the appropriate setup program from CD-ROM or floppy drive.

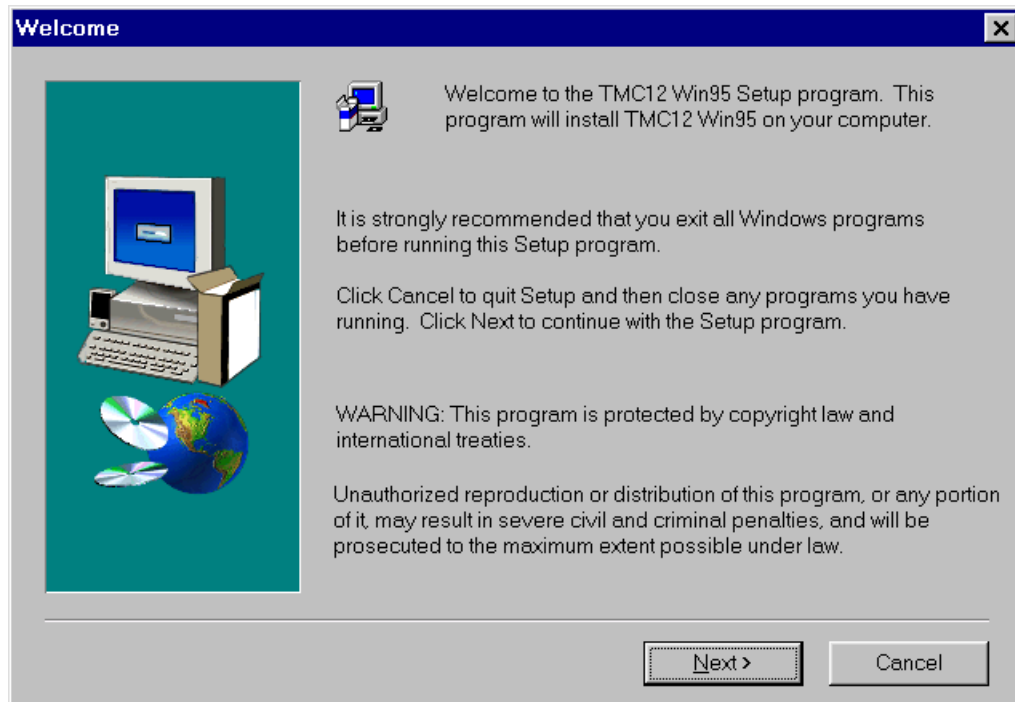


Figure 2. Click the button “Next >”.

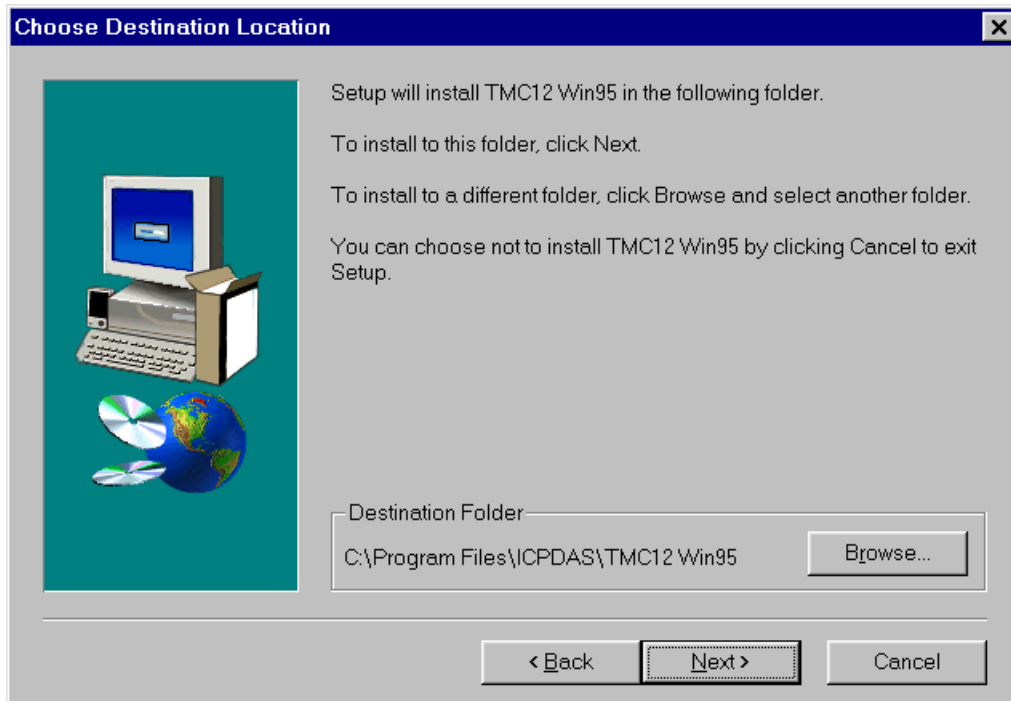


Figure 3. Click “**Browse...**” to change the folder that the user wants to install and then click “**Next >**”.
This folder will contain the software for the DAQ card.

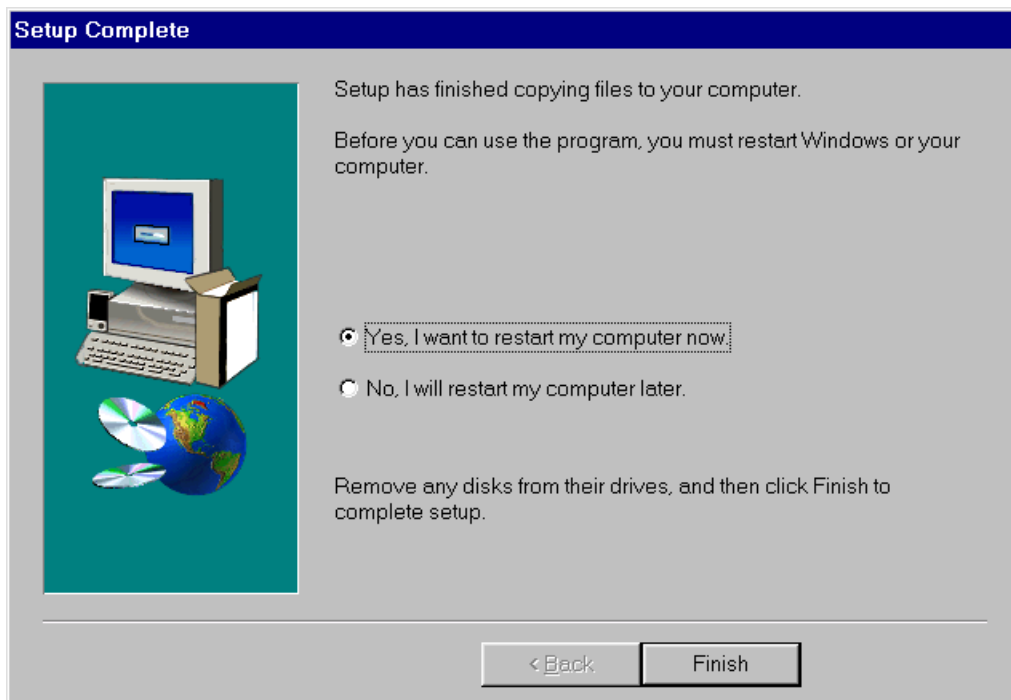


Figure 4. Select the item “**Yes, I want to restart my computer now**” and click the button “**Finish**” to restart the user’s system.