

分類/Classification	<input type="checkbox"/> tDS	<input type="checkbox"/> tGW	<input type="checkbox"/> PETL/tET/tPET	<input type="checkbox"/> DS/PDS/PPDS	<input type="checkbox"/> tM-752N
	<input type="checkbox"/> I/O Card	<input type="checkbox"/> VXC Card	<input checked="" type="checkbox"/> VxComm	<input type="checkbox"/> Other	
作者/Author	Vio Fan	日期/Date	2012-06-26	編號/NO.	FAQ-006

## Q: What is “Fixed baud rate” function in the VxComm Utility?

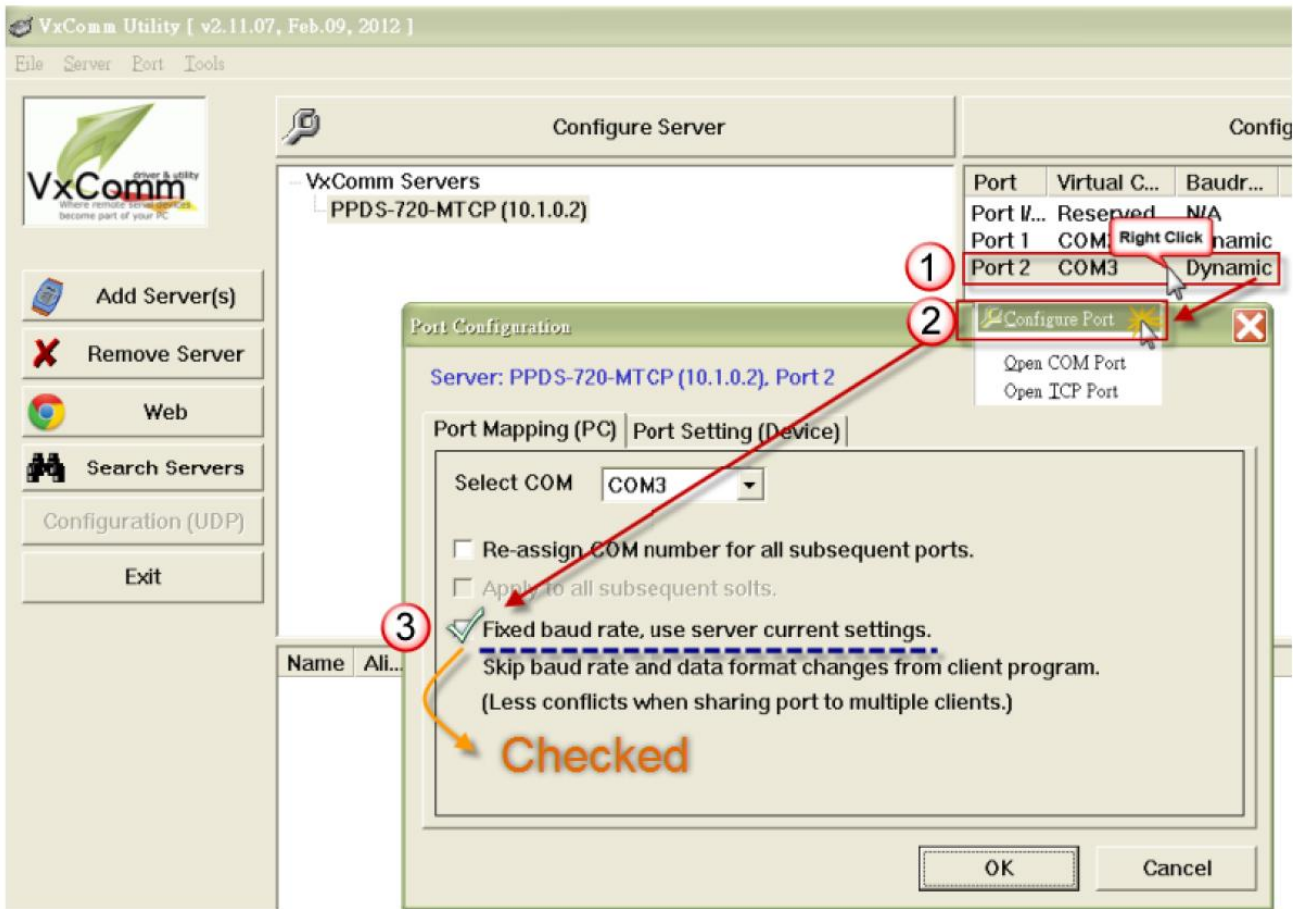
A: When the function "Fixed baud rate" is enabled, all commands of changing baud rate and data format will be skipped. Some programs may open a COM port with specified baud rate or data format temporarily and cause short-term communication errors, especially in multi-client application. If the baud rate and data format for the COM port are remaining the same for indefinitely long times, it is recommended to enable the "Fixed baud rate" function to prevent unintended settings changes in your application.

Note: If you will run a program such as DCON Utility to search for devices on the network by scanning over a range of baud rates, you need to disable the "Fixed baud rate" function or there will be nothing or duplicated devices searched resulting from the fixed baud rate and data format.



Please follow the step-by-step instructions below. (Refer to the following figure too)

1. Right-click on the name of Virtual COM port in VxComm Utility.
2. Left-click the "Configure Port" on pop-up menu.
3. Please Confirmed the status of this checkbox is checked.  
(  Fixed baud rate, use server current settings )
4. Restart Driver



**Note:**

Please don't enable this function if your application has to change baud rate, data format sometimes.  
(Default: Disable)