

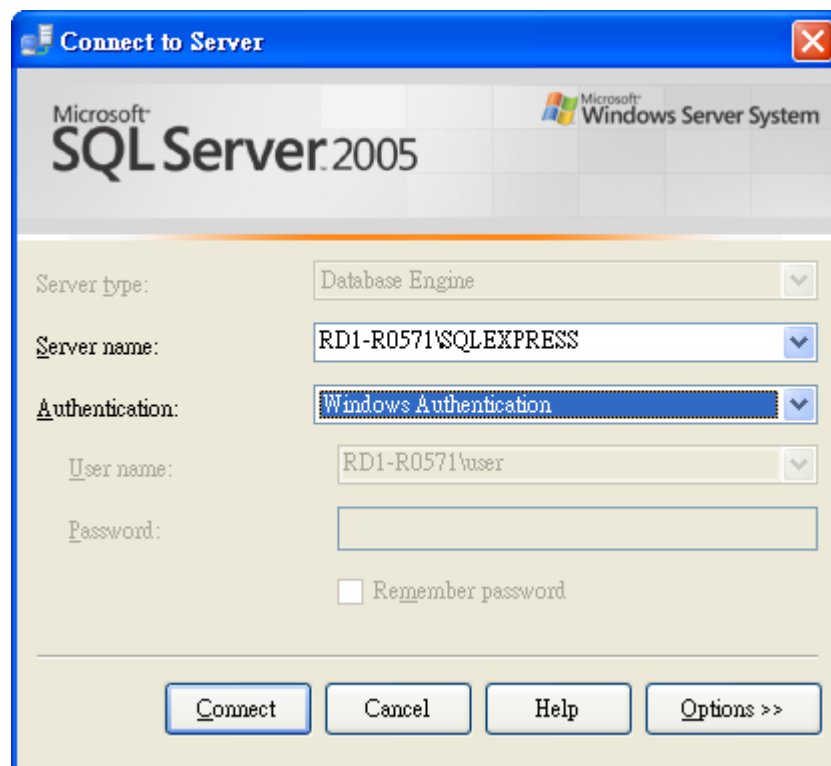
## I. Install SQL Server Express 2005

<http://www.microsoft.com/download/en/details.aspx?displaylang=en&id=15291>

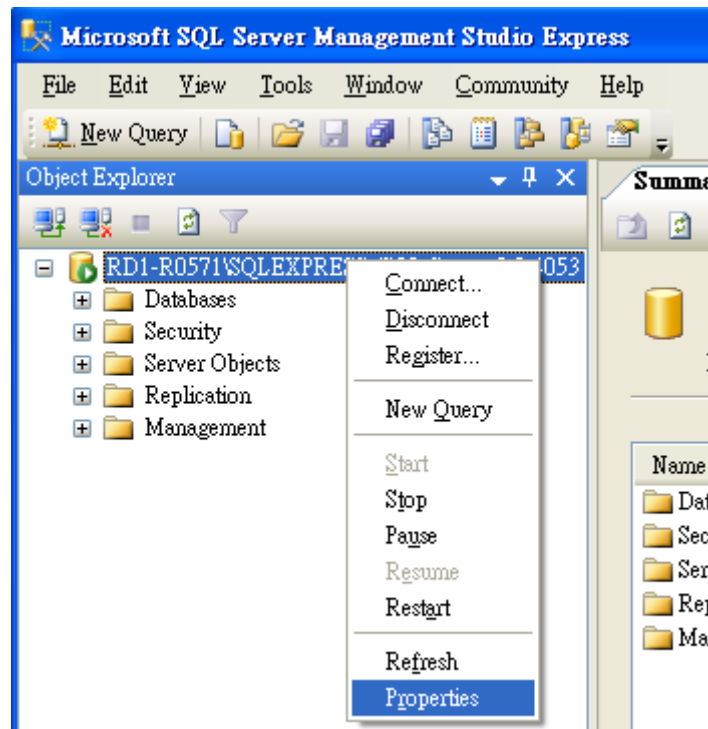
## II. Login SQL Server 2005 By Both SQL Server Authentication And Windows Authentication

Step1. Click [Start], point to [Programs], point to [Microsoft SQL Server 2005], and then click [SQL Server Management Studio Express].

Step2. Login SQL Server2005 with [windows authentication]



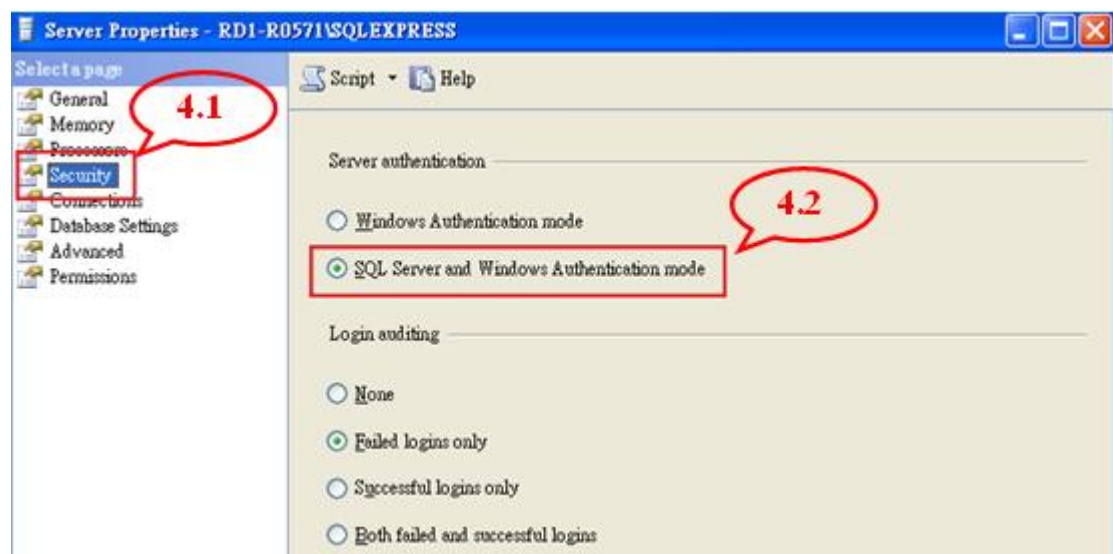
Step3. Right-click the main database (host name \ SQLEXPRESS) to select [Properties]



Step4. On the page [Server Properties]

4.1 Select [Security] Options.

4.2 In the [Server authentication] select [SQL Server and Windows Authentication mode] and then click [OK].

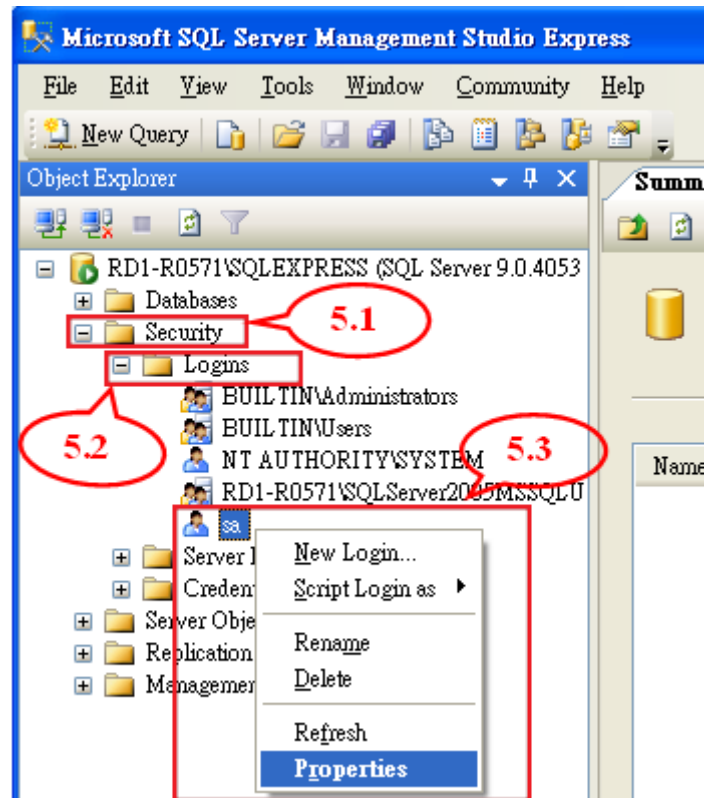


Step5. On the page [Object Explorer]

5.1 Expand [Security] option

5.2 Expand [Logins] option and you'll see your all accounts

5.3 Right-Click the account : [sa], and then select [Properties] option

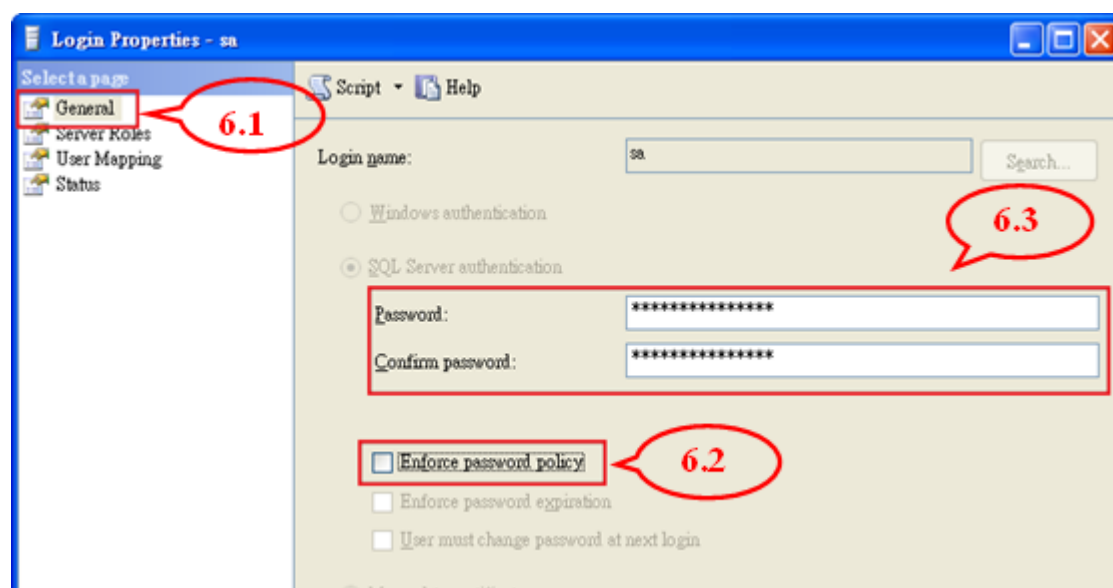


Step6. On the page [Login Properties - sa]

6.1 Select [General].

6.2 Change password by cancel the selection : [Enforce password policy].

6.3 Input your new password.

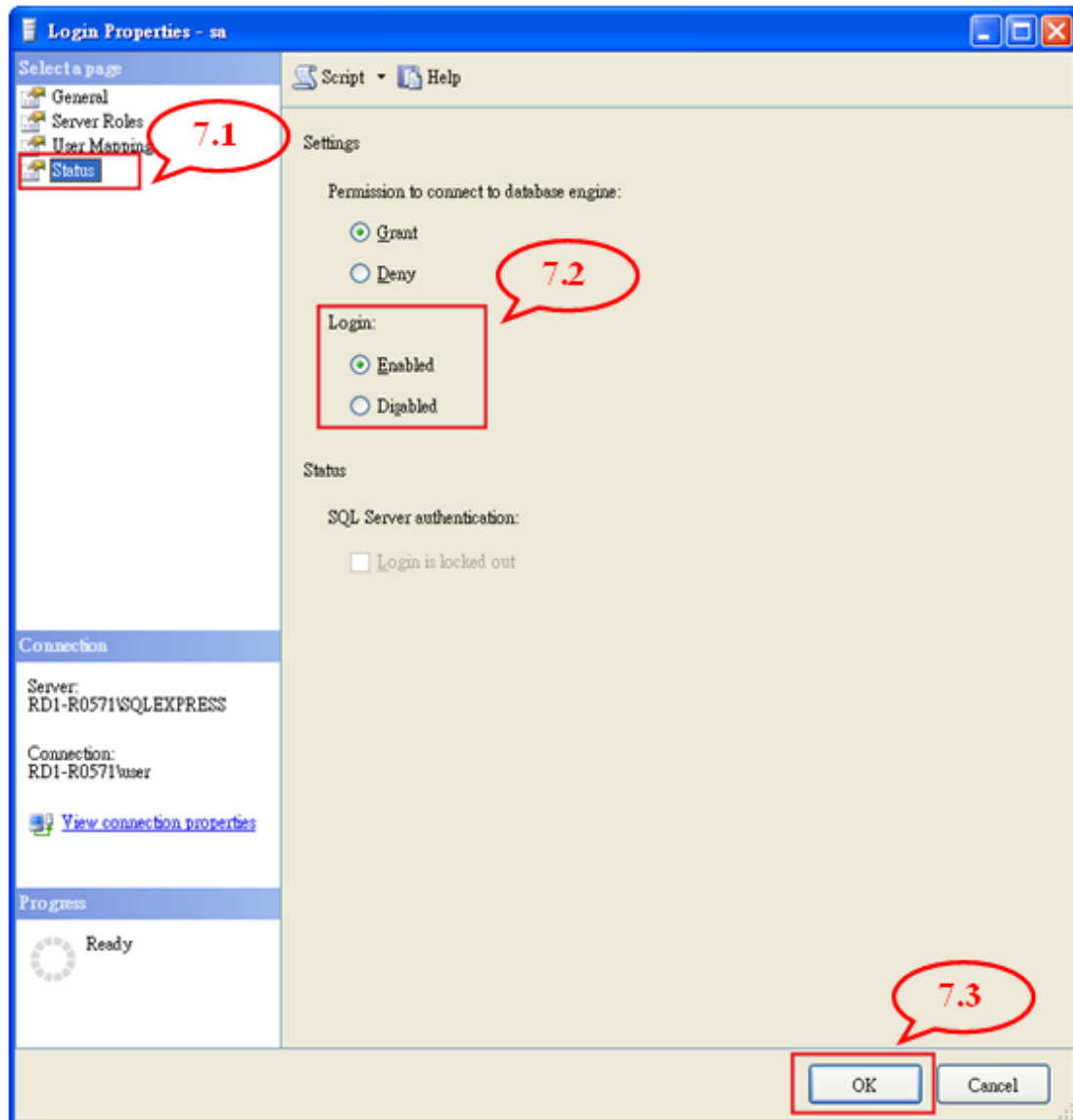


Step7. On the page [Login Properties - sa]

7.1 Select [Status].

7.2 In the [Login] status select [Enabled].

7.3 Click [OK]



Step.8 Reboot the SQL Server or computer

Right-click the main database (host name \ SQLEXPRESS) and select [Restart]

### **III. Configure SQL Server 2005 To Allow Remote Connections**

Step1. Click [Start], point to [Programs], point to [Microsoft SQL Server 2005], point to [Configuration Tools], and then click [SQL Server Surface Area Configuration].

Step2. On the [SQL Server 2005 Surface Area Configuration] page, click [Surface Area Configuration for Services and Connections].

Step3. On the [Surface Area Configuration for Services and Connections] page, expand [Database Engine], click [Remote Connections], click [Local and remote connections], click [Only use TCP/IP], and then click [Apply].

Note: Click [OK] when you receive the following message:  
Changes to Connection Settings will not take effect until you restart the Database Engine service.

Step4. On the [Surface Area Configuration for Services and Connections] page, expand [Database Engine], click [Service], click [Stop], wait until the MSSQLSERVER service stops, and then click [Start] to restart the MSSQLSERVER service.

## IV. Setting For CE Device Client To SQL Server 2005

### ✓ Create an exception for SQL Server 2005 in Windows Firewall

To create an exception for SQL Server 2005 in Windows Firewall, follow these steps:

Step1. In Windows Firewall, click the [Exceptions] tab, and then click [Add Program].

Step2. In the Add a Program window, click [Browse].

Step3. Click the **C:\Program Files\Microsoft SQL Server\MSSQL.1\MSSQL\Binn\sqlservr.exe** executable program, click [Open], and then click [OK].

**Note** The path may be different depending on where SQL Server 2005 is installed.

Step4. Repeat steps 1 through 3 for each instance of SQL Server 2005 that needs an exception.

### ✓ Set TCP Port (under IP All) to 1433

Step1. Click [Start], point to [Programs], point to [Microsoft SQL Server 2005], point to [Configuration Tools], and then click [SQL Server Configuration Manager].

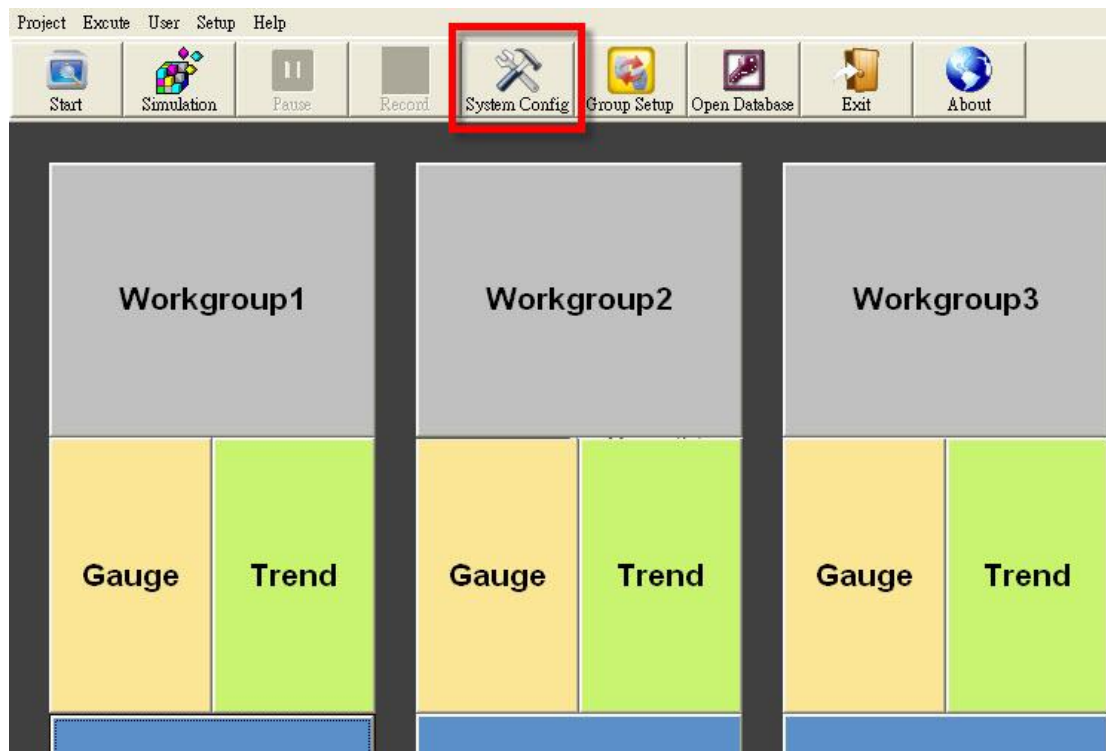
Step2. Click [Protocols for SQLEXPRESS] to sure that [TCP / IP] state is enabled.

Step3. Double-click on TCP/IP, set Enabled to Yes, and under the "IP Addresses" tab, clear all the "TCP Dynamic Ports" entries (set them blank), and set TCP Port (under IP All) to 1433. We are fixing the port, which means SQL Browser service can be stopped (in fact, this is a security best practice). You may need to use another port number if you have other versions/instances of SQL Server running.

Step4. Restart the SQL Express service to activate the new configurations.

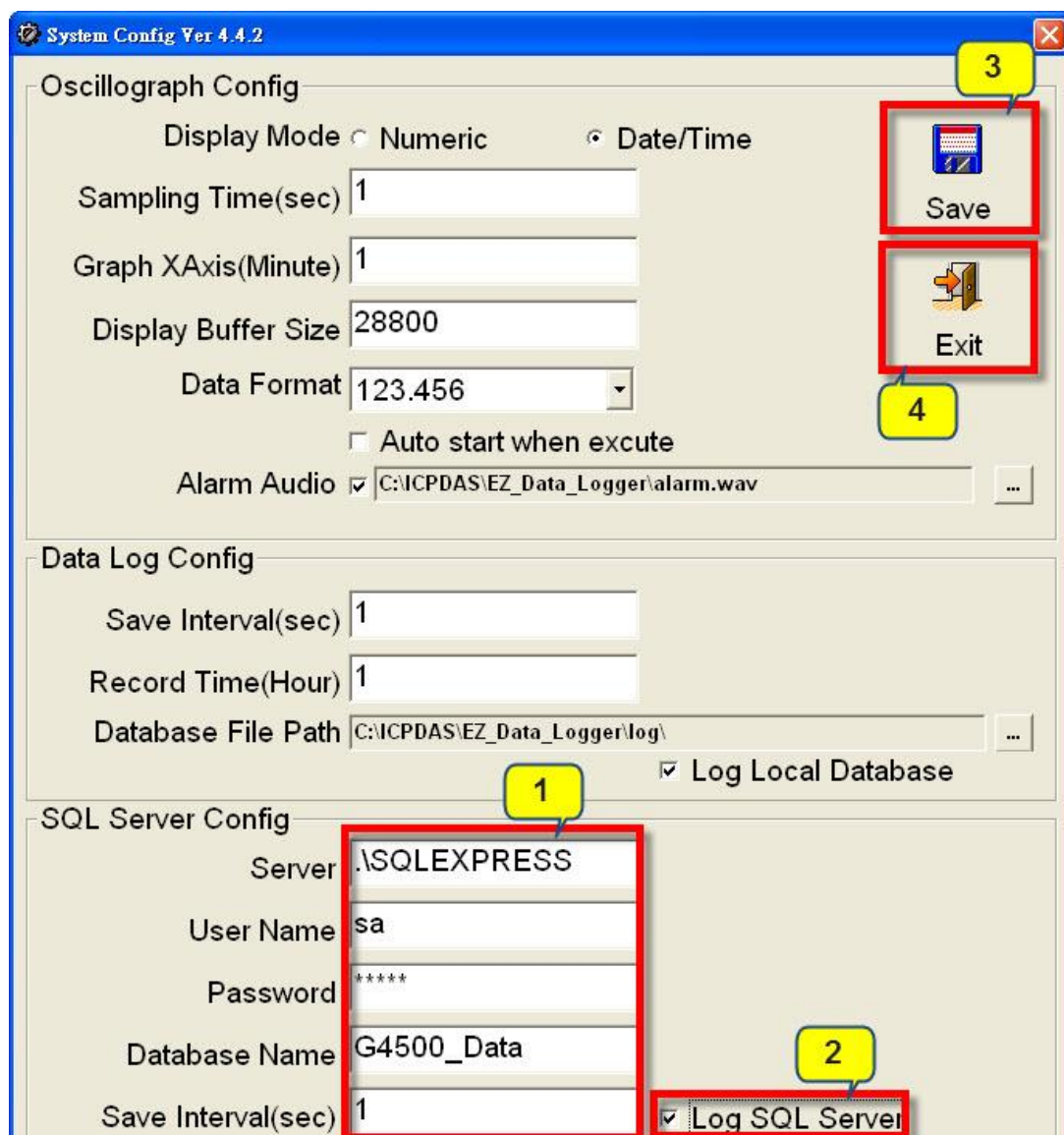
## V. SQL Server Connection Setting In EZ Data Logger

Step1. Execute EzDataLogger → press “System Config”.



Step2. Input the connection setting → tick “Log SQL Server” → press “Save” button to save settings → press “Exit” to leave the “System Config” form.

Server	User can use the connection string to connect to local or remote SQL Server. <b>1. “.SQLEXPRESS”</b> : Local SQL Server. <b>2. “IP,1433”(ex:10.10.10.10,1433)</b> : Connect to assignable remote SQL Server. The IP means remote server’s IP.
User Name	Login account.
Password	Login password.
Database Name	User define database name.
Save Interval(sec)	The time interval to save to the SQL Server. The unit of time interval is second.





Step3. Press the “Start” button to monitor the value and log data.

