



About InduSoft Licensing

Introduce to InduSoft and CEView license including recover and upgrading process.

INDEX

| | |
|---|-----------|
| 1. INTRODUCTION | 2 |
| 2. PRODUCT VERSIONS & EXECUTION MODES | 3 |
| 2.1 Product Versions | 3 |
| 2.2 Execution Modes | 3 |
| 3. PROTECTION TYPE & LICENSE SETTINGS | 5 |
| 3.1 Protection Type | 5 |
| 3.2 License Settings..... | 5 |
| 4. HARDKEY LICENSE FOR PC/XPAC..... | 8 |
| 4.1 Installing a New License | 8 |
| 4.2 Checking the Current License | 8 |
| 4.3 Upgrading the Current License | 10 |
| 5. SOFTKEY LICENSE FOR PAC (CEVIEW)..... | 13 |
| 5.1 Installing CEView on PAC..... | 13 |
| 5.2 Recovering or Updating a CEView SoftKey License | 14 |



1. INTRODUCTION

This document describes the procedures for licensing the **InduSoft Web Studio (IWS)** and **CEView** products. IWS is the runtime software for WinNT/2K/XP and CEView is the runtime software for WinCE (WinPAC, ViewPAC, and XPAC-CE6).

Note:

InduSoft provides CEView for PAC (Programmabel Automation Controller) WinCE embedded controllers. PAC includes WinPAC, ViewPAC, and XPAC-CE6 Series.



2. PRODUCT VERSIONS & EXECUTION MODES

2.1 Product Versions

InduSoft Web Studio and CEView share the same version number, according to the following syntax:

X.Y+SPWW

For example:

- InduSoft Web Studio **v6.1+SP6**
- CEView **v6.1+SP6**

Both InduSoft Web Studio and CEView can execute applications built in previous version of the product. However, older versions of IWS and CEView cannot execute applications built or modified in newer versions.

Note:

Each license is only issued for a specific version (X.Y). When you install a new version of InduSoft Web Studio or CEView, you must upgrade your current license to the new version being installed. If you are installing a Service Pack only, you are not required to upgrade your license.

2.2 Execution Modes

InduSoft Web Studio and CEView support the following Execution Modes:

| Execution Mode | InduSoft Web Studio | CEView |
|------------------------------------|---------------------|--------|
| Evaluation Mode | YES | NO |
| Demo Mode | YES | YES |
| Licensed for Engineering Only | YES | NO |
| Licensed for Runtime Only | YES | YES |
| Licensed for Engineering + Runtime | YES | NO |

- Evaluation Mode:** Enables all features of the product (engineering and runtime)

When you install InduSoft Web Studio for the first time on a computer, the product runs for period 40 hours in Evaluation Mode which includes any time in which you are running any product module



(engineering or runtime).

After running the product for 40 hours, the Evaluation Mode terminates and IWS automatically activates the **Demo Mode** until you install a valid license (Hardkey for PC and Softkey for PAC). You will not be able to reactivate Evaluation mode—even if you uninstall, and then reinstall the product on your computer.

- **Demo Mode:** Enables you to download or upload applications to remote stations, and to run applications for testing and/or demonstration purposes. You can execute runtime tasks and use the debugging tools (LogWin and Database Spy), but they are shut down automatically after running continuously for two hours. You can restart the Demo Mode again and run for another two hours, and so on. You cannot create or modify screens, worksheets, or application settings in Demo Mode.

Note:

PAC only runs in demo mode. Program shut down automatically after running continuously for two hours.

- **Licensed for Engineering Only:** Enables all workbench options for an unlimited time. This mode also allows you to execute the runtime tasks and debugging tools (LogWin and Database Spy) for 72 hours continuously. After the 72-hour period expires, these tasks shut down, but you can restart them again and run for another 72 hours, and so on. You can use this license for development and testing only.
- **Licensed for Runtime Only:** Allows you to run all runtime and debugging tools (LogWin and Database Spy) for unlimited time, but you cannot create or modify screens and/or worksheets.
- **Licensed for Engineering and Runtime:** Enables all engineering tools, runtime tasks, and debugging tools (LogWin and Database Spy) for an unlimited period of time.



3. PROTECTION TYPE & LICENSE SETTINGS

3.1 Protection Type

InduSoft Web Studio and CEView support the following Protection Types:

| Protection Type | InduSoft Web Studio | CEView |
|---------------------------------|---------------------|--------|
| Hardkey (LPT1 or USB Interface) | YES | NO |
| Softkey | NO | YES |

- Hardkey:** The Hardkey is an encapsulated chip that must be physically connected to the parallel port (LPT1) or USB port (support v6.0 or higher version) of the local computer on which InduSoft Web Studio is installed.

Each Hardkey provides one license, which cannot be shared simultaneously with more than one copy of IWS in the network. Using a Hardkey for the LPT1 port of your computer does not prohibit you from connecting any device to the parallel port of the computer (for example a printer) — it should be electronically transparent to the devices connected to the parallel port. For example, you can connect a printer cable to the Hardkey while the Hardkey is connected to the computer. However, you may encounter problems if you install more than one Hardkey (for different products) on the same parallel port. The IWS license resides in the Hardkey; therefore, if you connect the Hardkey to another computer, you are transferring the license to this other computer. When using the Hardkey for USB interface, the USB port where you connect the Hardkey cannot be used to connect any other device simultaneously.

- Softkey:** When you install CEView, the program generates a unique code (Site Code). You must send this Site Code to your software vendor, who will then generate a license code (Site Key) to match your Site Code. The Site Key installs the license on your PAC.

3.2 License Settings

Each license sets the following parameters:

- Product Type:** Specifies which features and restrictions are enabled for the application (such as maximum number of tags supported, maximum number of drivers running simultaneously, and so on). Please refer to **Table 3.2.1** for detail information about each type.



- ❑ **Execution Mode:** Engineering Only, Runtime Only, and Engineering + Runtime
- ❑ **Number of Web Thin Clients supported simultaneously by the Server:** Specifies how many Web Thin Clients are supported.
- ❑ **Number of Secure Viewers simultaneously by the Server:** Specifies how many Thin Clients using Secure Viewer are supported.
- ❑ **Number of SMA Clients simultaneously by the Server:** Specifies how many SMA Clients are supported.

Note:
 One or more Web Thin Clients, Secure Viewers, or SMA Clients can be connected to the server simultaneously (for an additional charge), but the license installed on the server must support these additional Clients. PC or XPAC is capable with 0, 1, 2, 4, 8, 16, 32, 64, and 128 clients. PAC is capable with 0, 1, 2, 4, and 8 clients.

- ❑ **Version Supported:** When you generate a license, the license will specify the product version it supports.

Table 3.2.1

| Product Type | Tags | Drivers | Web Thin Client | Secure Viewer | SMA Client |
|----------------------|---------|-----------|-----------------|---------------|-------------|
| Advanced Server | 512,000 | Unlimited | 4 (Default) | 1 (Default) | 1 (Default) |
| Control Room | 64,000 | 8 | 4 (Default) | 1 (Default) | 1 (Default) |
| Operator Workstation | 4,000 | 5 | 4 (Default) | 1 (Default) | 1 (Default) |
| Local Interface | 1,500 | 3 | 4 (Default) | 1 (Default) | 1 (Default) |
| CEView Standard | 1,500 | 3 | 4 (Default) | 1 (Default) | 1 (Default) |
| NTView PRO | 300 | 3 | 4 (Default) | 1 (Default) | 1 (Default) |
| CEView Lite Plus | 300 | 3 | 4 (Default) | 1 (Default) | 1 (Default) |
| Lite Interface | 150 | 1 | 4 (Default) | 1 (Default) | 1 (Default) |

IMPORTANT:



- The table only applied to users who purchase license from ICP DAS.
- License purchased before **2009/06/12** does not include Secure Viewers and SMA Clients.
- License purchased before **2008/08/11** has only 1 Web Thin Client included.

4. HARDKEY LICENSE FOR PC/XPAC

This section explains how to install and upgrade Hardkey licenses for IWS running on PC or XPAC.



4.1 Installing a New License

To install a new InduSoft Web Studio License for PC or XPAC, use the following steps:

1. Install InduSoft Web Studio on your computer or XPAC controller.
2. Connect the Hardkey to the parallel port (LPT1) or to the USB interface from the PC or XPAC (USB only) where you install IWS.

Caution:

Use caution when installing or removing a Hardkey from your computer's parallel port. We strongly recommend that you turn off the computer and disconnect it from the power supply before installing or removing the Hardkey.

3. Run InduSoft Web Studio.

4.2 Checking the Current License

To check the current Hardkey License and see whether it matches the ordered version. Please perform the following procedure to check the status of your current IWS license:

1. Close all InduSoft Web Studio development and runtime modules.
2. Ensure the Hardkey is connected to the parallel port (LPT1) or USB interface on the computer or XPAC where you installed IWS.


3. Execute the Register module by selecting Start → All Programs → InduSoft Web Studio v6.1 →  Register.
4. When the “*Protection Manager*” dialog is displayed (see Figure 4.2.1), click (*enable*) the **Hardkey** radio button in the *Protection Type* section and click the **Check** button.



Figure 4.2.1

If a valid Hardkey is not connected to the PC or XPAC, the following error message displays.



Figure 4.2.2

If a valid Hardkey is connected to the computer’s USB port or parallel port (LPT1), the *Register* module opens the “*Hardkey Settings*” dialog box (see the following figure 1-3), which displays the current license settings recorded on the Hardkey

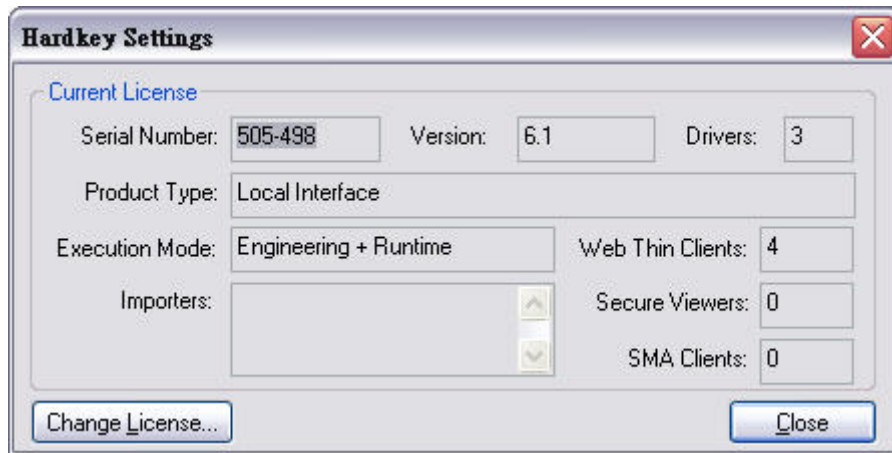


Figure 4.2.3

4.3 Upgrading the Current License

To upgrade your current IWS license, perform the following steps:

1. Repeat CH. 4.2 step 1 to step 4.
2. After *Hardkey Settings* dialog opened, click the Changed License button.



Figure 4.3.1

3. When the *Change License – Hardkey* dialog displays, copy the code information from the Site Code text box.
4. Send Serial Number and Site Code to ICP DAS Co., Ltd.
5. After Serial Number and Site Code received by ICP DAS, a new Site Key will be generated and send back to user. Type this Site Key into the **Site Key** field of the *Change License – Hardkey* dialog and then click **Authorize** button.

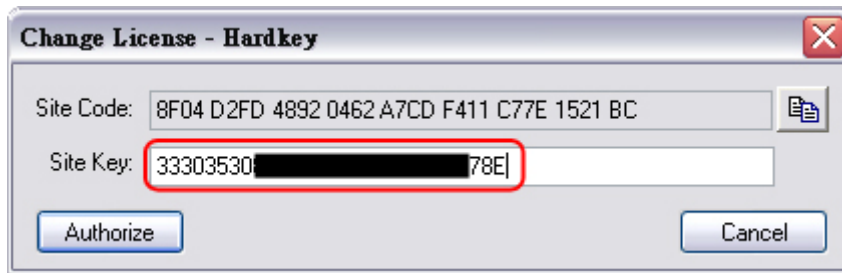


Figure 4.3.2

You will be prompted to confirm the operation. If the program accepts (validates) your Site Key, the following message displays

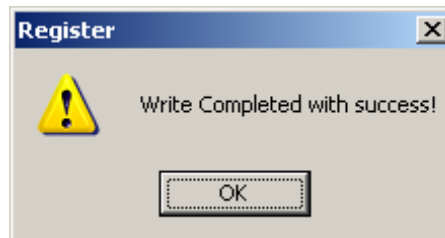
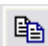


Figure 4.3.3

Note:

- Site Code is use for generating new Site Key, and Serial Number is for checking the date of the previous order.
- If your new Site Key is not valid, an error message displays. If this happens, double-check that you entered the Site Key correctly. If you entered the key correctly and still receive an error message, contact your ICP DAS for assistance.

Important:

We strongly recommend our customers to click copy button  to copy Site Code into a TXT-file (e.g. Notepad) as well as save the frame of the dialog to an image file (e. g. JPG-file). Email the TXT and image files to ICP DAS (or local ICP DAS dealerships for customers not in Taiwan) to prevent wrong Site Code.

6. After upgrading, The Change License – Hardkey will produce a new Site Code. Please send the new Site Code back to ICP DAS (or local ICP DAS dealership) for convenience in next upgrade.



You can upgrade any license setting (Product Type, Execution Mode, or Number of Web Thin Clients, Secure Viewers, SMA Clients) simultaneously supported by the server, or upgrade the software version that is being supported currently



5. SOFTKEY LICENSE FOR PAC (CEVIEW)

- This Section explains how to check, install, recover, and upgrade a Softkey license for PAC (WinPAC / ViewPAC / XPAC-CE6). There are two way to register a CEView license on you PAC.

Note:

The WinPAC-8x36, WinPAC-8x46, WinPAC-8x39, WinPAC-8x49, VP-2xW6, VP-2xW9, VH-2xW6, VH-2xW9, XPAC-8x46-CE6, and XPAC-8x49 have CEView License loaded already.

5.1 Installing CEView on PAC

Some PAC has CEView pre-installed. For those users who have not installed the CEView, use the following steps:

1. Download the CEView Runtime folder from <http://www.icpdas.com/products/Software/InduSoft/download.htm>.
2. Extracted the downloaded file, and copy the **InduSoft** folder to default path of the PAC. The default path can vary with each PAC. Please refer to **Table 5.1.1** for path information.

Table 5.1.1

| Target PAC | Default Path |
|----------------------|-------------------------------|
| WinPAC-8000 Series | \Micro_SD\ |
| ViewPAC Series | \Micro_SD\ |
| XPAC-8000-CE6 Series | \System_Disk\ |

3. Execute `\<Default Path>\InduSoft\CESERVER.EXE` to start **Remote Agent** program on PAC.

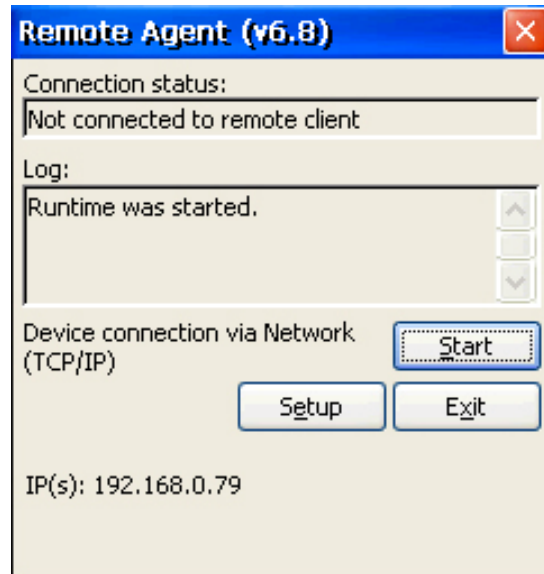


Figure 5.1.1

4. The Remote Agent should start a demo program itself. If the Runtime does not start, click Start button to run demo program.

If a dialog appears as shown in Fig.5.1.2 after starting an IWS project in PAC, it means license of IWS runtime might be lost or has not been installed. Please refer to the next chapter to check and recover the license.

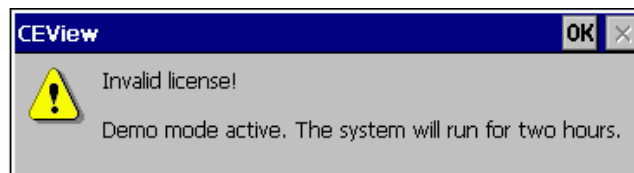


Figure 5.1.2

Note:

After updating OS or recovering back to factory settings of a PAC, the CEView SoftKey license loses and needs to be recovered.

5.2 Recovering or Updating a CEView SoftKey License

5.2.1 Checking a CEView SoftKey License

To check a PAC CEView SoftKey license on PAC locally, use the following procedure:

1. Execute `\<Default Path>\InduSoft\CESERVER.EXE` to start **Remote Agent** program on PAC (see Figure 5.1.1 and Table 5.1.1).
2. From the *Remote Agent* dialog, click the **Setup** button to open the Setup dialog (see Figure 5.2.1).

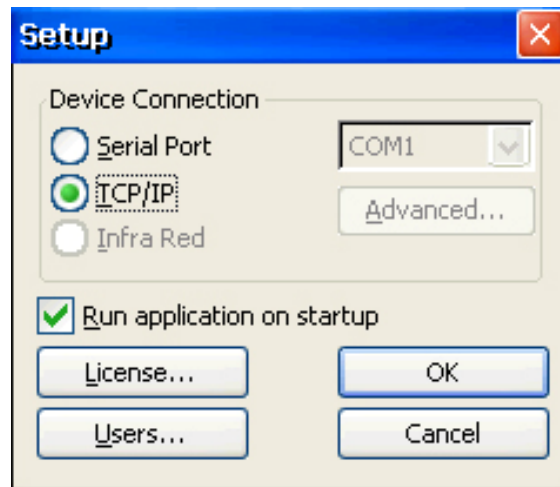


Figure 5.2.1

3. On the *Setup* dialog, click the License button to open the *License* dialog.

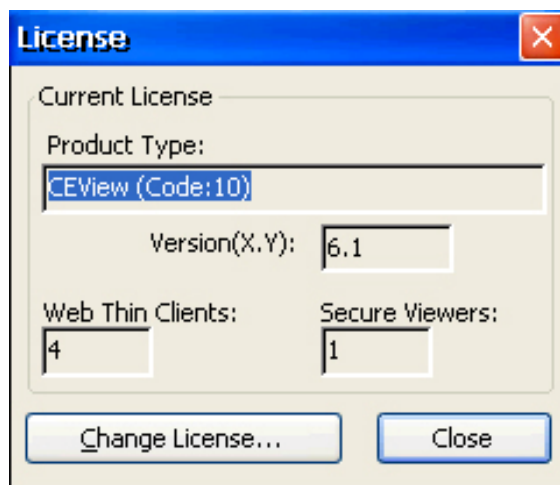


Figure 5.2.2

The possible description in Products field is shown on **Table 5.2.1**



| Product Field | Product Type | Tags | License |
|--------------------------|------------------|------|--------------|
| Program not Licensed | Demo | Demo | Not Licensed |
| Unknown (Product Code:5) | CEView Lite Plus | 300 | Licensed |
| CEView(Code:10) | CEView Standard | 1500 | Licensed |

5.2.2 Recovering a CEView SoftKey License

For user who wants to recover a CEView SoftKey license, use the following procedure:

1. Execute all procedures described in section 5.2.1.
2. In the *License* dialog, clicking **Change License...** button to open the *Change License* dialog.

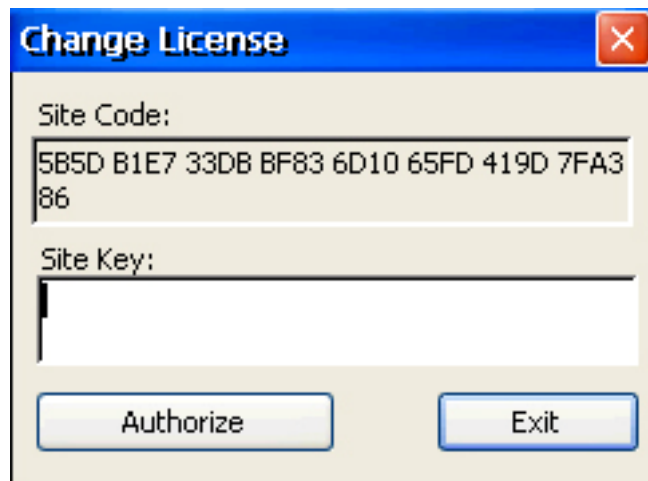


Figure 5.2.3

3. Type the **Site Key** into the Site Key field on the *Change License* dialog, and click the **Authorize** button.

If the Site Key is accepted (validated), the following gmessage displays:

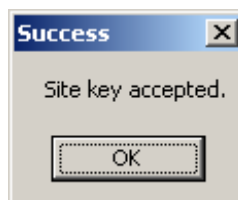



Figure 5.2.4

Note:

- The Site Code and Site Key can be found on PAC.



+

- If the new Site Key is not validated, an error message displays. If this happens, double check that you entered the Site Key correctly and have correct Site Code (one Site Code matches to one Site Key only). If you still get an error message, contact ICP DAS for further assistance.

4. If Site Key accepted, the following message displays: “CAUTION: You MUST save the registry settings now! Otherwise, your license will be lost next time you restart your WinCE device.”
5. Execute Utility Tool of PAC (ex: WinPAC Utility), and click **File → Save and Reboot** to save the license settings.

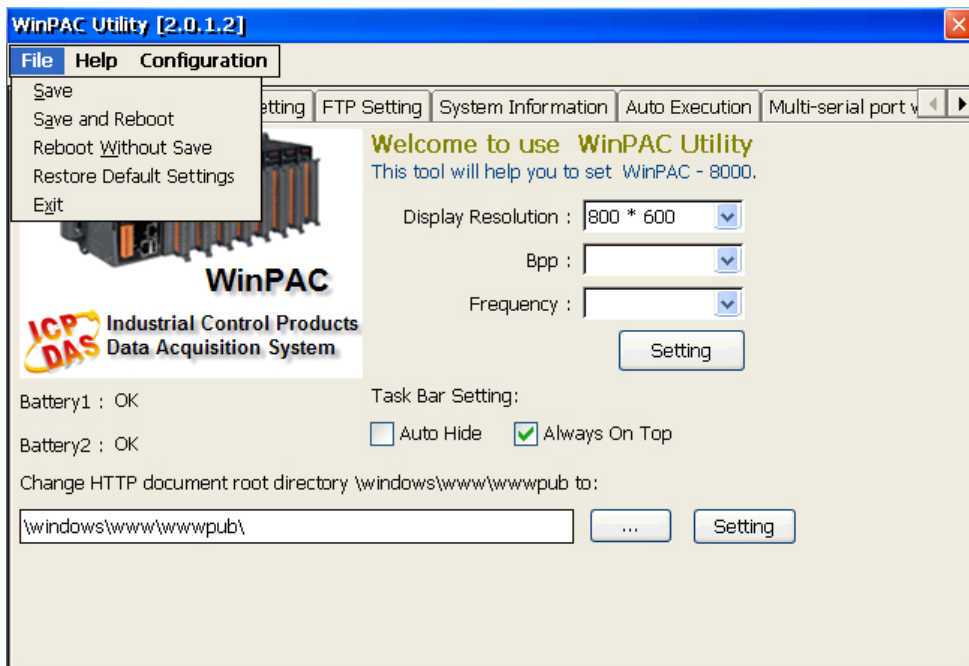


Figure 5.2.5



5.2.2 Installing and Updating a New CView SoftKey License

For user who wants to recover a CView SoftKey license or install a New CView SoftKey license, use the following procedure:

1. Open the *Change License* dialog (see Figure 5.2.3).
2. When the *Change License* dialog displays, copy the **Site Code** information from the Site Code text box.
3. Send the **Site Code** along with **Serial Number** and **MAC address** (both LAN1 and LAN2) of PAC to ICP DAS Co., Ltd. The Serial number and MAC address can be found in Utility Tool of PAC.

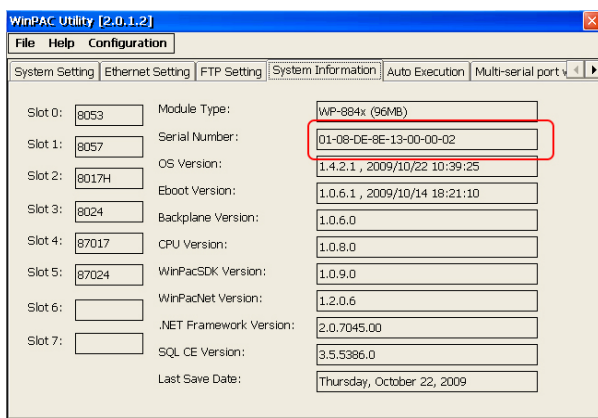


Figure 5.2.6

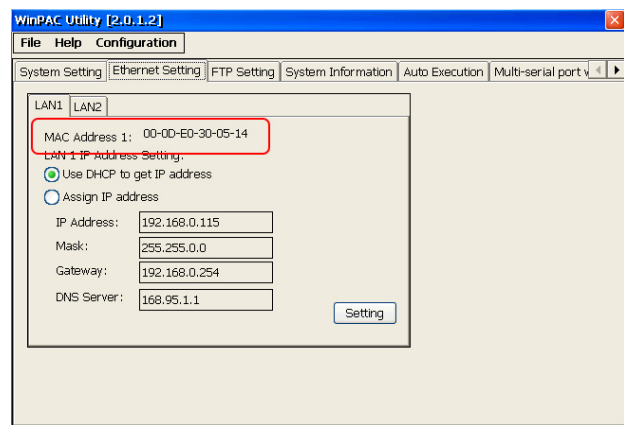


Figure 5.2.7

4. After Serial Number and Site Code received by ICP DAS, a new Site Key will be generated and send back to user. Type this Site Key into the **Site Key** field of the *Change License* dialog and then click **Authorize** button.



Figure 5.2.8



You will be prompted to confirm the operation (see Figure 5.2.4) if the program accepts (validates) your Site Key

Important:

We strongly recommend our customers to double check the Site Code before sending it to us. Email the Site Code and image files of the screen shoot to ICP DAS (or local ICP DAS dealerships for customers not in Taiwan) to prevent wrong Site Code.

5. After upgrading, The Change License will produce a new Site Code. Please **send the new Site Code back to ICP DAS** (or local ICP DAS dealership) for convenience in next upgrade.