

DL-300-WF Series Quick Start

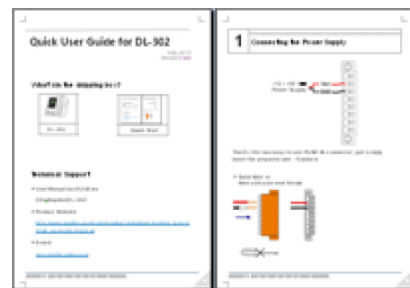
For DL-301-WF/DL-302-WF/DL-303-WF

Aug 2018, Version 1.00

What's in the shipping box?



DL-300-WF Logger



Quick Start

Technical Support

- User Manual and Utilities

<http://ftp.icpdas.com/pub/cd/iiot/dl-300/document/>

<http://ftp.icpdas.com/pub/cd/iiot/utility/>

- Product Website

http://www.icpdas.com/root/product/solutions/remote_io/rs-485/dl_series/dl-300-wf.html

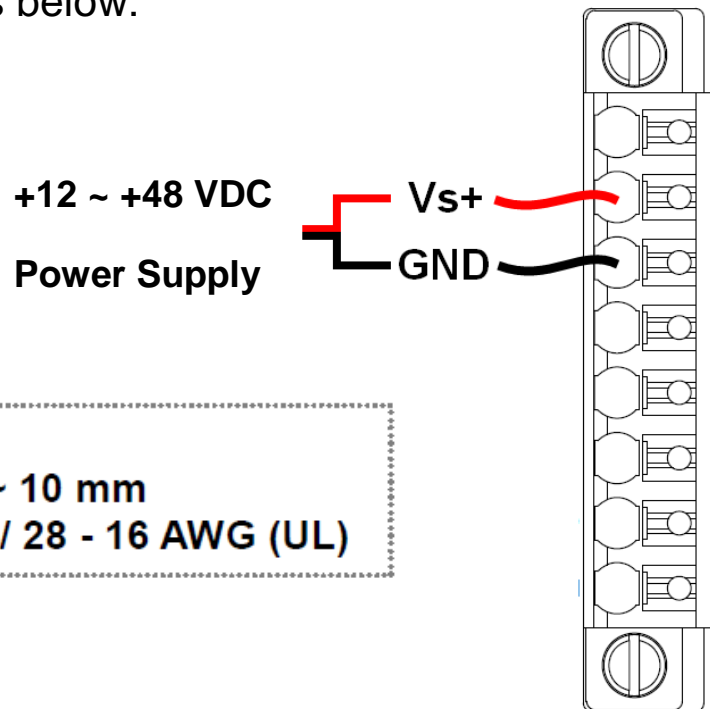
- E-mail

service@icpdas.com

1

Connecting the Power Supply

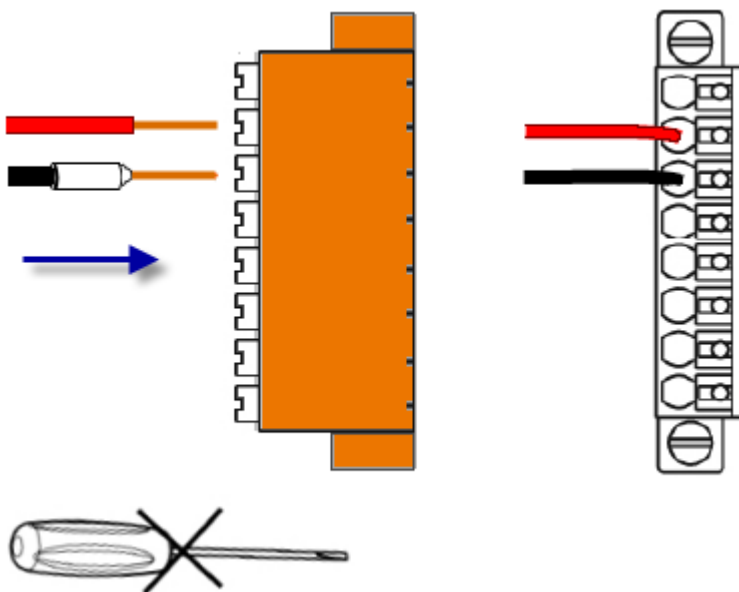
The DL-300-WF logger can be powered by either a PoE switch or a +12 ~ +48 V power supply as below:



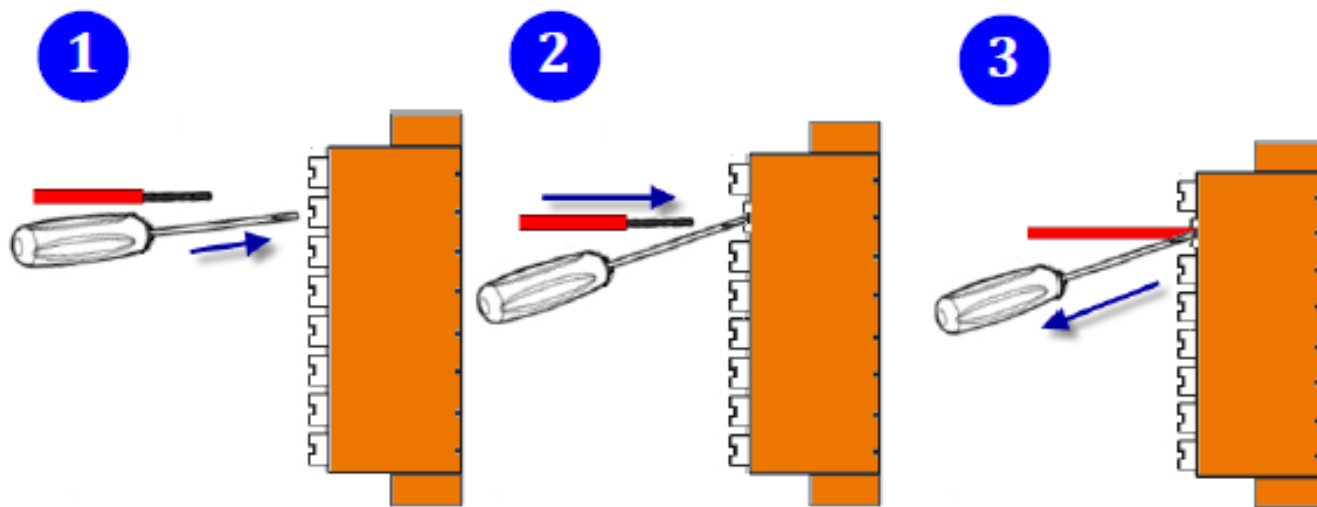
Wire requirement:

- Stripping length: 8 ~ 10 mm
- 0.20 - 1.5 mm² (IEC) / 28 - 16 AWG (UL)

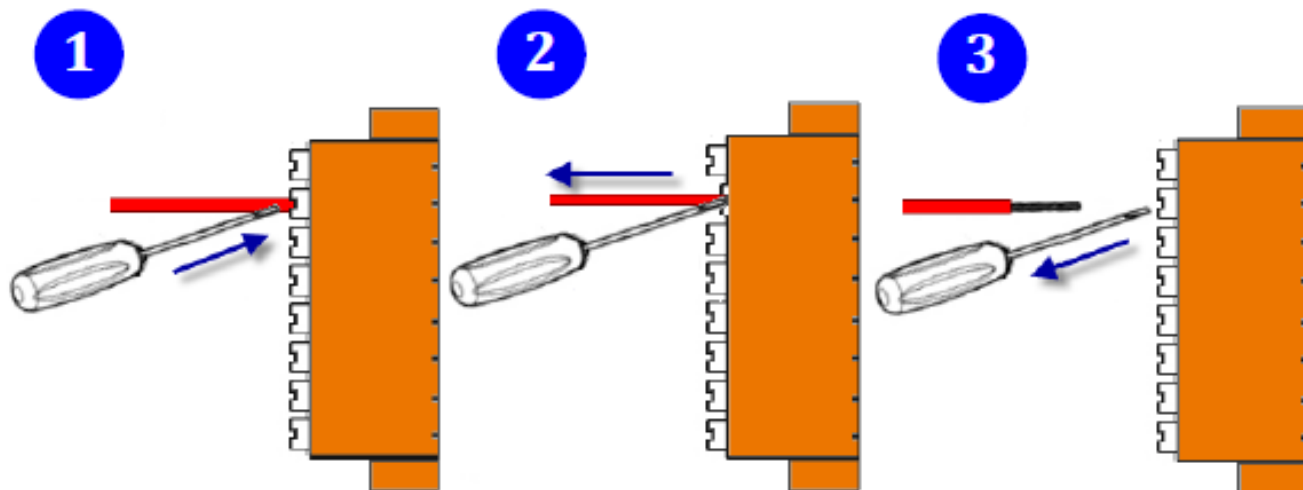
➤ Push In (Solid Wire or Wire with wire-end ferrule)



➤ **Flexible Wire**



➤ **Push and Release**



2

Powering-on the DL-300-WF logger

The factory default settings for Wi-Fi communication of the DL-300-WF are as follows.

- Mode: **AP**
- Wireless Security: WPA/WPA2, "00000000"
- DHCP Server (AP Mode): DHCP Server on, start IP: 192.168.255.2
- Wi-Fi Channel (AP Mode): 11
- IP Address: 192.168.255.1
- Gateway Address: 192.168.255.254
- Subnet Mask: 255.255.0.0
- SSID: DL-301-WF or DL-302-WF or DL-303-WF
- Modbus TCP Port: 502

The Wi-Fi IIOT Utility is provided to configure and test the DL-300-WF module through the Wi-Fi interface. Please refer to chapter 6 of the user manual for details.

You can also use a browser to configure and test the DL-300-WF module through the Ethernet interface. Please refer to chapter 4 of the user manual for details.