

# iCAM-721F Quick Start

08/2017, Version 1.0

## What's in the Box?

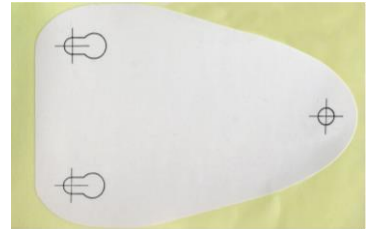
iCAM-721F package includes the following items:



iCAM-721F  
x 1



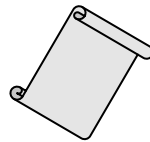
Accessory Tool Pack  
x 1



Alignment Sticker  
x 1



Software CD x 1



Quick Start (This Document)

## Technical Support

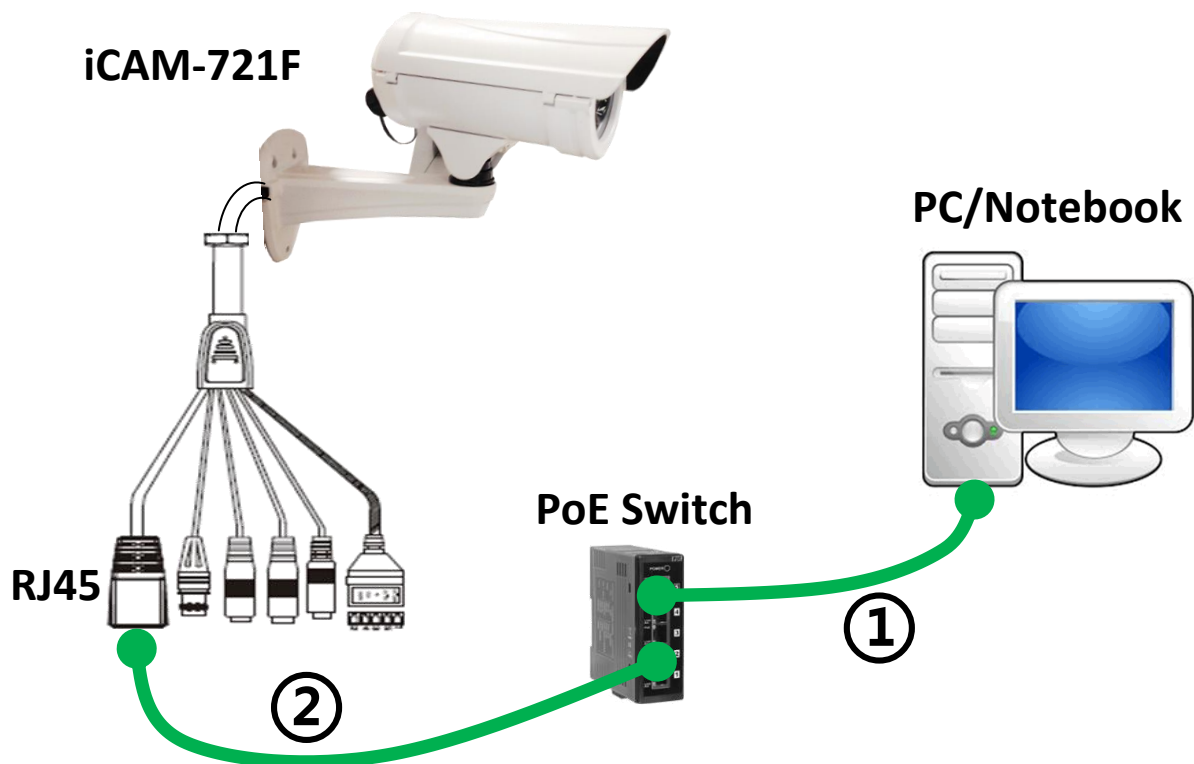
iCAM-721F User Manual (CD:\iCAM\User\_Manual\)

<http://ftp.icpdas.com/pub/cd/iCAM/>

iCAM Series Website

<http://wise.icpdas.com/products/iCAM.html>

# 1 Physical Connection



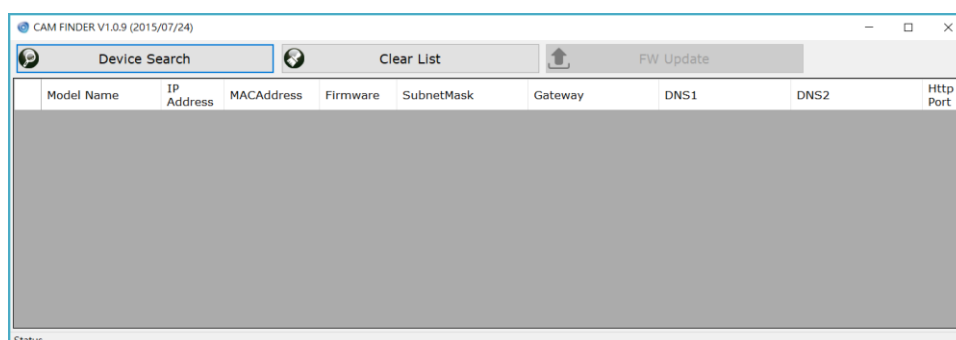
- 1) Be sure that your PC or Notebook has connected to your local Ethernet network.
- 2) Be sure that IP Camera has connected to your local networking via the Ethernet port (RJ45) on the cable. For this PoE model, user can use PoE Switch as power supply.
- 3) Use CAM FINDER software utility in CD to set up the camera (see the next page), or directly set up the camera via the Micro IE browser using the following default IP information:

**IP: 192.168.255.2**  
**Submask: 255.255.0.0**  
**Gateway address: 192.168.0.1**  
**DNS Server address: 8.8.8.8**

**Default**  
**Username: admin**  
**Password: admin**

## 2 CAM FINDER Installation

**CAM FINDER** software utility installation is required for finding out your camera on local network that you can launch camera web pages via Internet Browser or do some basically setting directly without camera web pages.



**CAM FINDER** utility programs are located in the Software **iCAM CD** provided together with the device. Please insert the CD into the PC CD-ROM Drive, open the folder “**Software\_Utility**” and then “**CAM FINDER**”. Launch the **CAM FINDER** setup file “**setup.exe**” and complete the installation step by step.

**iCAM CD Path:** \Software\_Utility\Cam Finder\  setup.exe

The latest version of the **CAM FINDER** software program is available on the **iCAM** product website:

<http://wise.icpdas.com/products/iCAM.html>

Or directly download from the following FTP path:

[http://ftp.icpdas.com/pub/cd/iCAM/Software\\_Utility/Cam\\_Finder/](http://ftp.icpdas.com/pub/cd/iCAM/Software_Utility/Cam_Finder/)

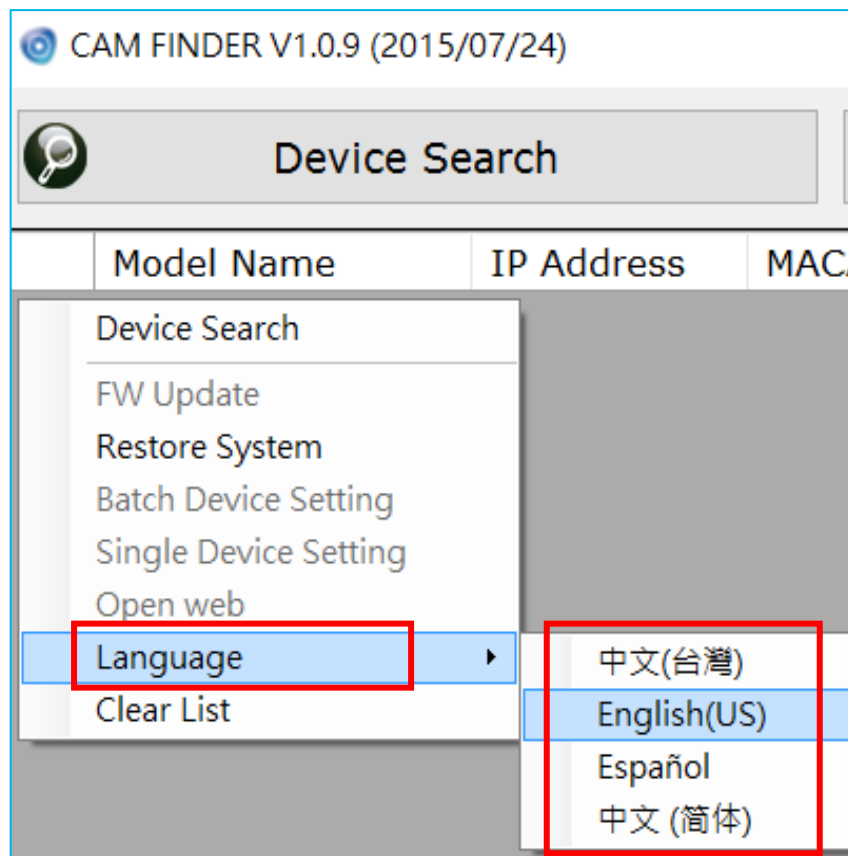
### 3 Network Configuration

**CAM FINDER** is a utility that provides an easier, more efficient way to configure the IP address and network settings of the devices. It even provides a convenient way to set the network settings for multiple devices simultaneously using the batch setting function. Moreover, **CAM FINDER** can save the network settings for all devices as a backup and restore them when necessary.



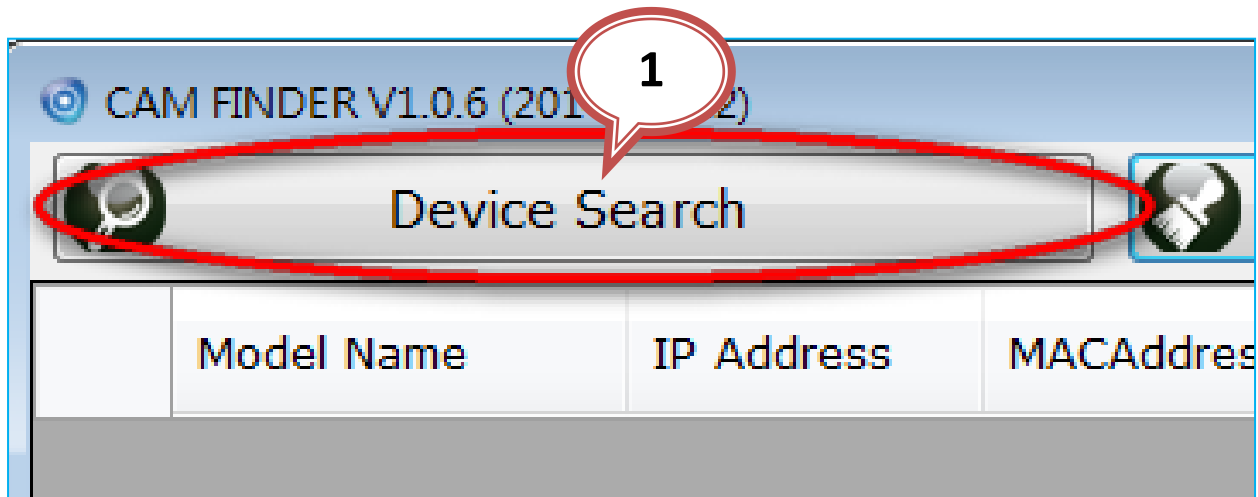
**Double click the CAM FINDER icon** on the Desktop of PC to run the software.

**Click the right key** of mouse on the gray area and select the **[Language]** can change the software language that supports for [Traditional Chinese], [English], [Spanish] and [Simplified Chinese].



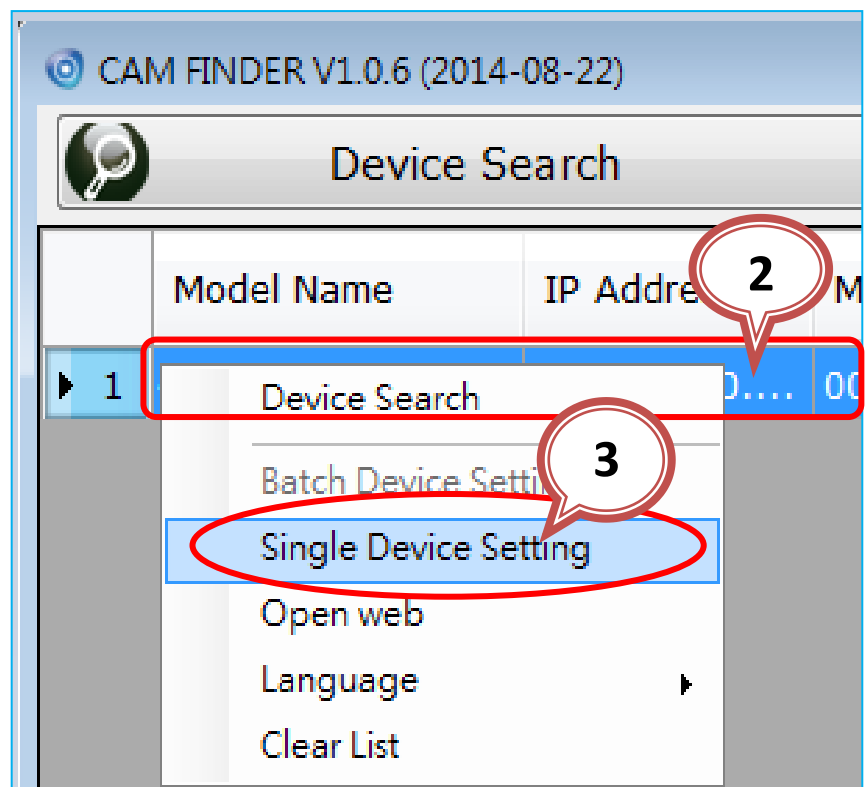
## Using CAM FINDER to Assign an IP Address

- 1) Click the **[Device Search]** on the top of Window to search the camera on the network.

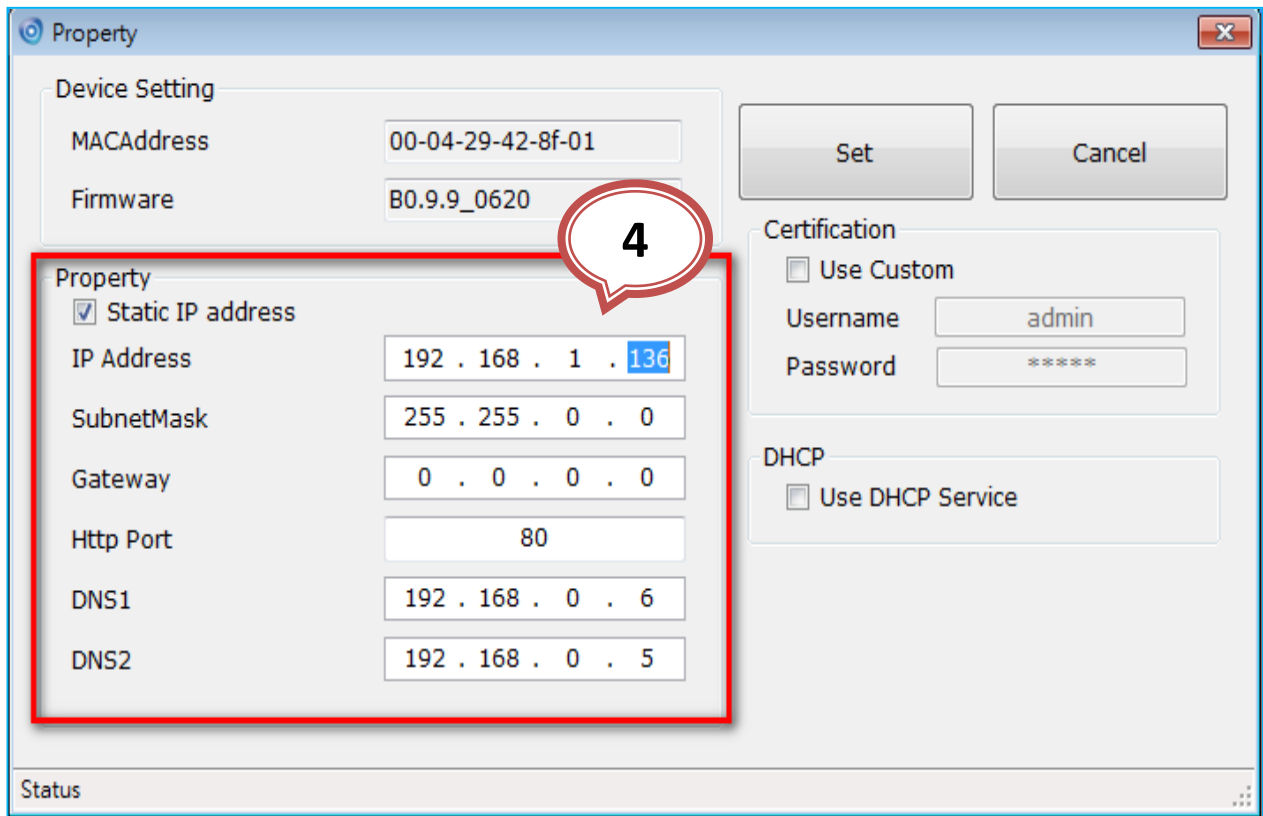


- 2) From the list, select the device item with the MAC Address that corresponds to the iCAM-721F that is to be configured.

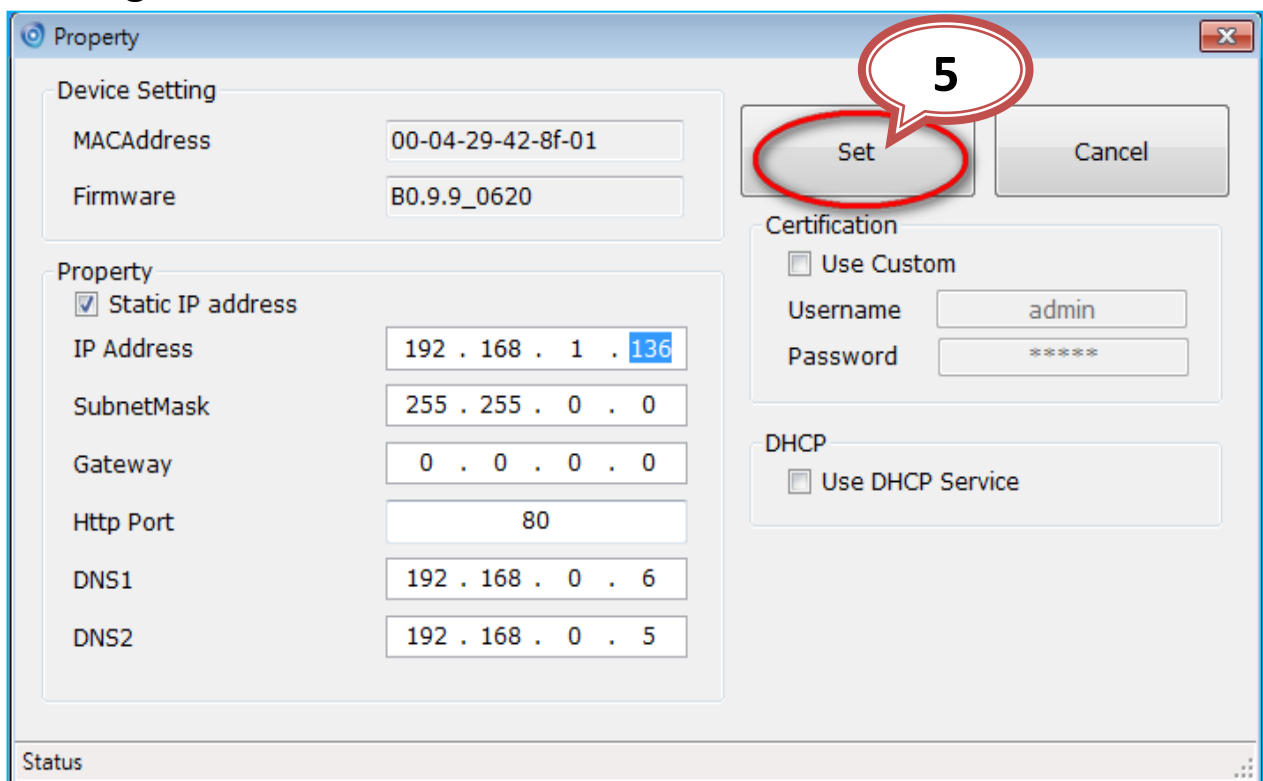
- 3) Double click the item to open the Property Page or click right key of mouse to the item and select the **[Single Device Setting]**.



4) Modify the relative network settings of Static IP Address.

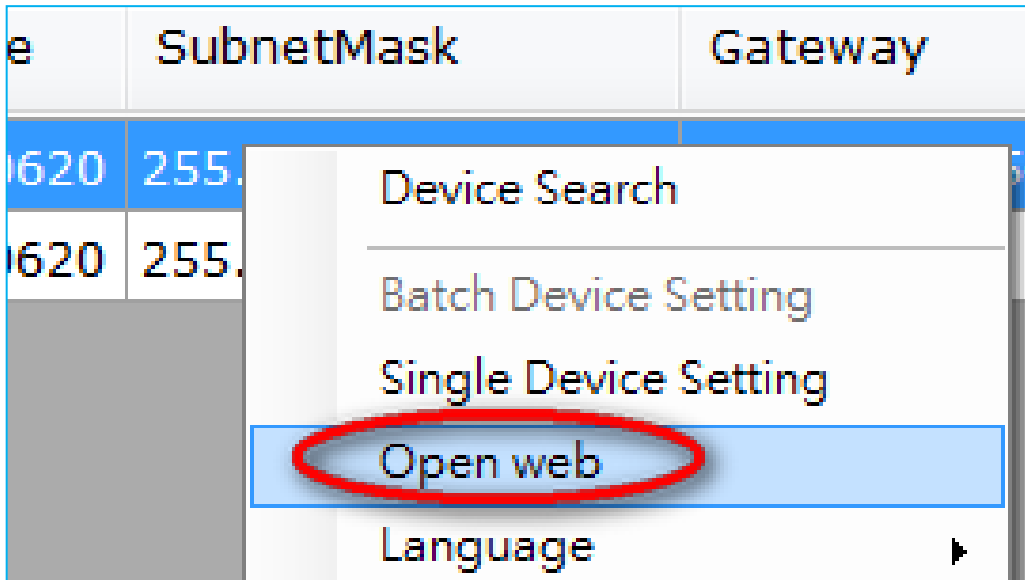


5) Click [Set] button to complete the property configuration settings.

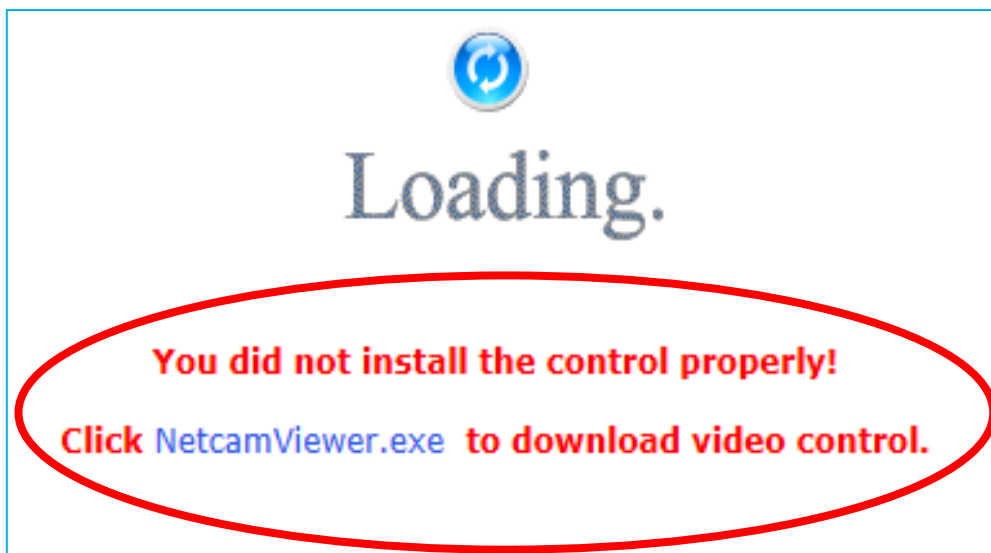


## Open the Web-based UI of the selected camera

- 1) To access the Web-based UI of the selected unit, run the **[Open Web]** on the select item.



- 2) For first time user, there will be a prompt to install the **NETCAM VIEWER** PLUG-IN. Click the hyper-link directly to download. Before completing the installation, you should close the browser first for PLUG-IN component installation. After installation completed, re-launch the browser.



3) If the device has been configured correctly, the default Web browser will open to the home page of the selected device.

\* Username and password is required. (Default is admin / admin)

**Live View**

Actual Size (1920x1080)

Protocol:

Video Stream:

**Recording Path**

**Recording file name**

**Snapshot Path**

**Snapshot file name**

**Setting Language**

CH1 2014-04-03 09:45:02

(800x450)

\*Double click on video screen to full screen.