



ECAT-2610 Quick Start

v1.1, Nov. 2018

What's in the box?

The package includes the following items:



ECAT-2610 Module x 1



Quick Start x1
(This Document)



CA-0915 Cable x1

Related Information

For detailed information about the **how to configure and operation Modbus RTU slave device**, refer to **Chapter 4 “Modbus RTU Device Setup”** in the User Manual.

- EtherCAT Series Product Page:

http://www.icpdas.com/root/product/solutions/industrial_communication/fieldbus/ethercat/ethercat_selection_guide.html

- Documentation & Software:

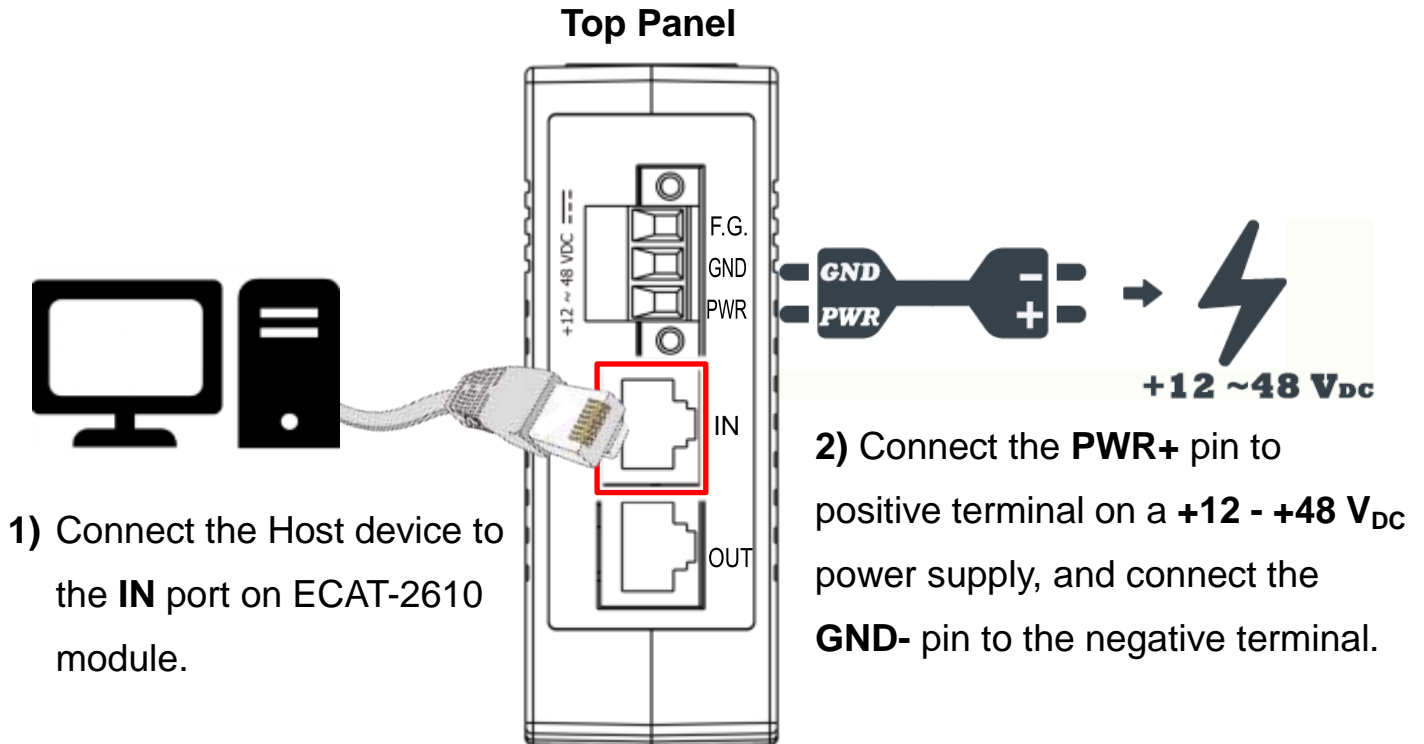
http://ftp.icpdas.com/pub/cd/fieldbus_cd/ethercat/slave/ecat-2000/


- KA-52F Series Product Page (optional):

http://www.icpdas.com/root/product/solutions/accessories/power_supply/ka52f-48.html

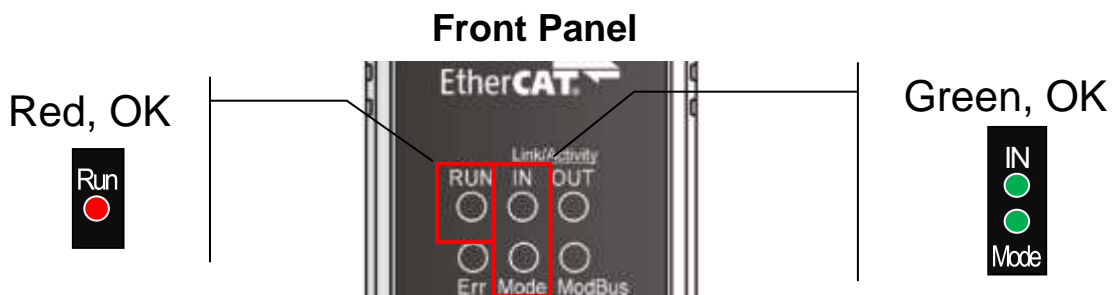
1 Connecting the Power and Host PC

Switch on module and connect it to an EtherCAT network



 **NOTE:** Attaching an ESC directly to an office network will result in network flooding, since the ESC will reflect any frame – especially broadcast frames – back into the network (broadcast storm).

Verify that LEDs indicator



2

Search Modules



ESI file

The latest ESI file (**ICPDAS ECAT-2610.xml**) can be downloaded from ICP DAS website at

 http://ftp.icpdas.com/pub/cd/fieldbus_cd/ethercat/slave/ecat-2000/software/

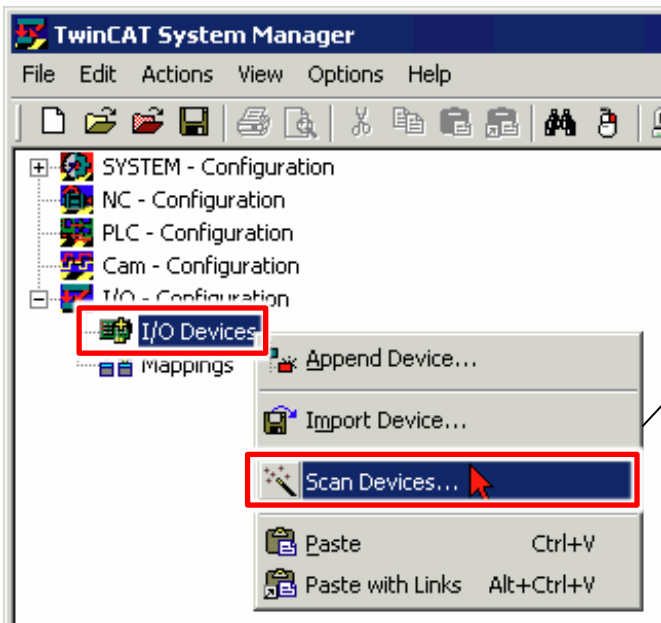
Install the ESI file

Copy the “ICPDAS ECAT-2610.xml” file to the Master Tools installation folder, as indicated in the table below.

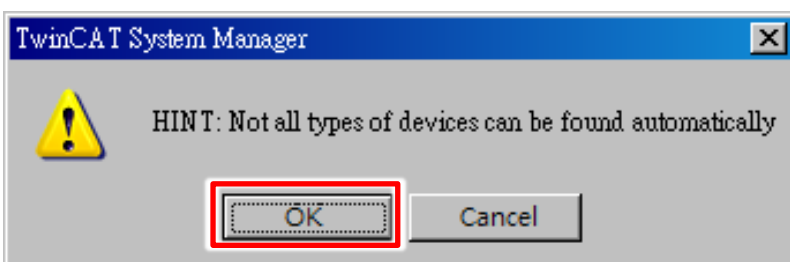
Software	Default Path
Beckhoff EtherCAT Configuration	C:\EtherCAT Configurator\EtherCAT
Beckhoff TwinCAT 3.X	C:\TwinCAT\3.x\Config\Io\EtherCAT
Beckhoff TwinCAT 2.X	C:\TwinCAT\Io\EtherCAT

Run the EtherCAT Master software (Beckhoff TwinCAT 2.X)

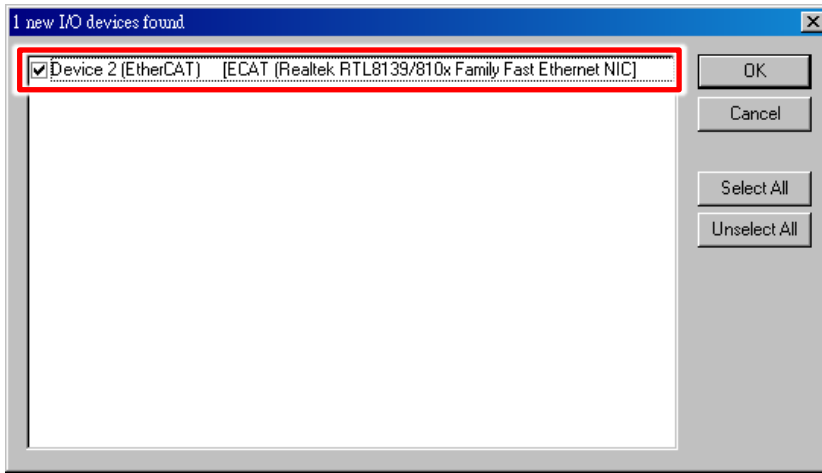
Switch on power and execute the TwinCAT System Manager(Config mode)



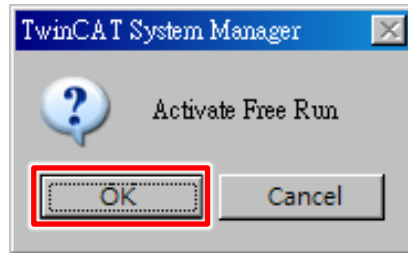
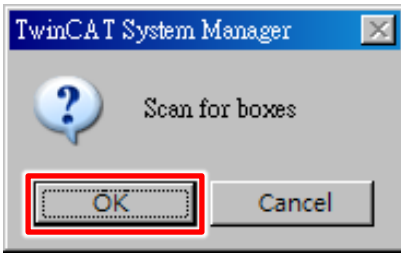
I/O Devices → Right click → Scan Devices...



Click “OK” button

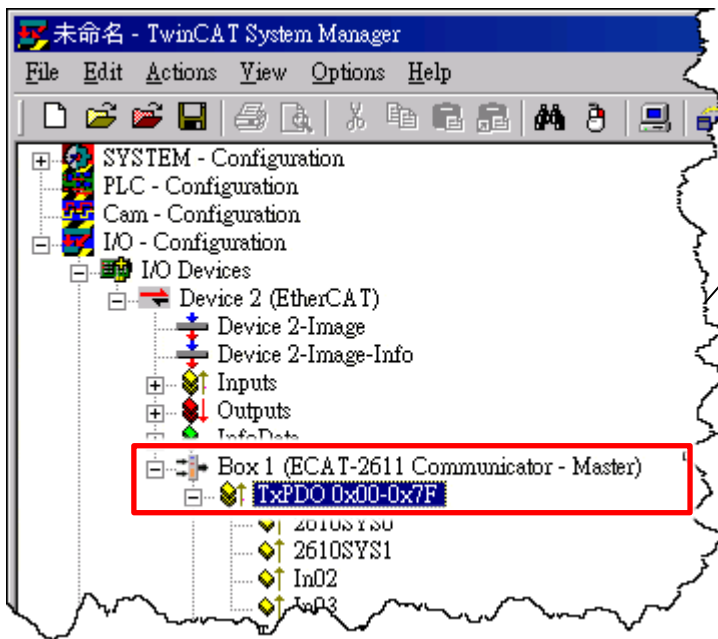


Choose the correct network device which is connected to ECAT-2610

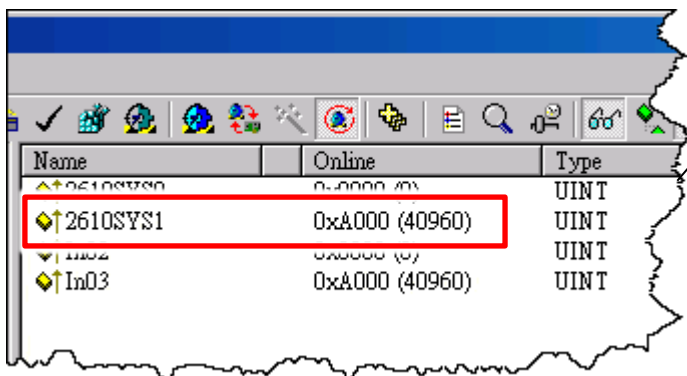


Click "OK" to start scanning
Click "OK" to activate the free run mode for TwinCAT system manager

Verifying the status of ECAT-2610 Module



In the left-hand window, **ECAT-2610** is now shown in the TwinCAT system Manager and click "TxPDO 0x00-0x7F"



In the right-hand window, check the "2610SYS1" item is **0xA000** means the normal running of the ECAT-2610 module