

# Quick Start for ECAT-2060

English / July,2016/ Ver 1.0

## 1 Shipping Package

This shipping package contains the following items

1 x ECAT-2000 module

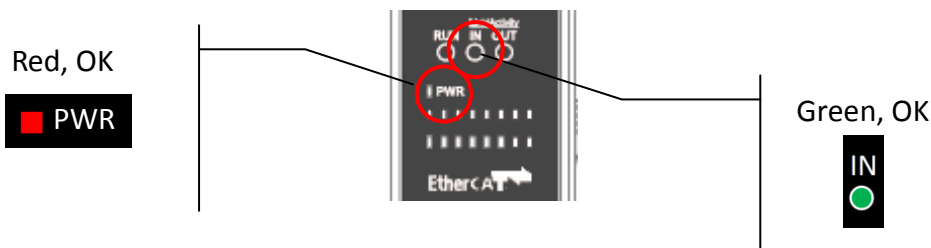
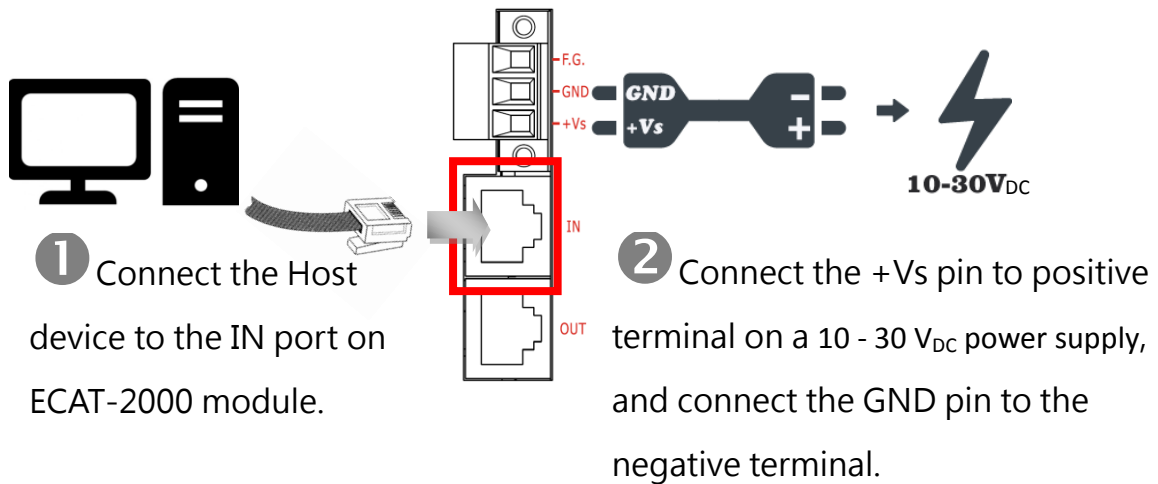


1 x Quick Start Guide (This Document)



## 2 Connecting the Power and Host device

Switch on module and connect it to an EtherCAT network



# 3 Search Modules



## ESI file

The latest ESI file (ICPDAS ECAT-2000.xml) can be downloaded from ICP DAS website at

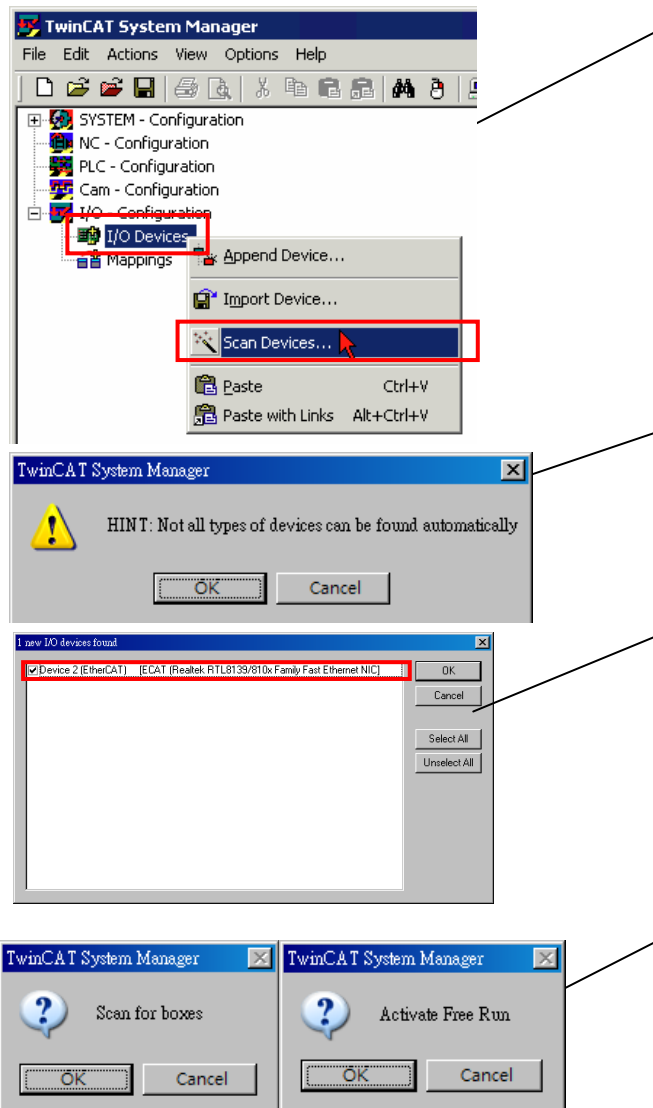
 [http://ftp.icpdas.com/pub/cd/fieldbus\\_cd/ethercat/slave/ecat-2000/software/](http://ftp.icpdas.com/pub/cd/fieldbus_cd/ethercat/slave/ecat-2000/software/)

## Install the ESI file

Copy the “ICPDAS ECAT-2000.xml” file to the Master Tools installation folder, as indicated in the table below.

Software	Default Path
Beckhoff EtherCAT Configuration	C:\EtherCAT Configurator\EtherCAT
Beckhoff TwinCAT 3.X	C:\TwinCAT\3.x\Config\Io\EtherCAT
Beckhoff TwinCAT 2.X	C:\TwinCAT\Io\EtherCAT

## Run the EtherCAT Master software (Beckhoff TwinCAT 2.X)

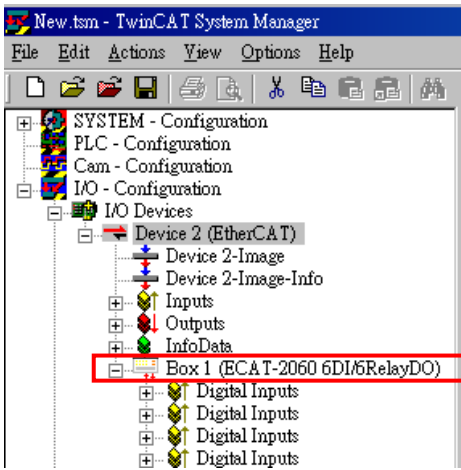


Switch on power  
Execute the TwinCAT System Manager(Config mode)  
I/O Devices-> Right click-> Scan Devices...

Click OK

Choose the correct network device which is connected to ECAT-2000

Click Yes to start scanning and click Yes to activate the free run mode for TwinCAT system manager

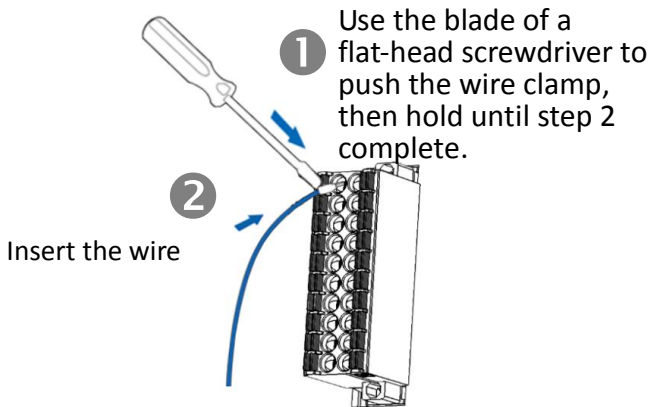


ECAT-2000 is now shown in the TwinCAT system Manager

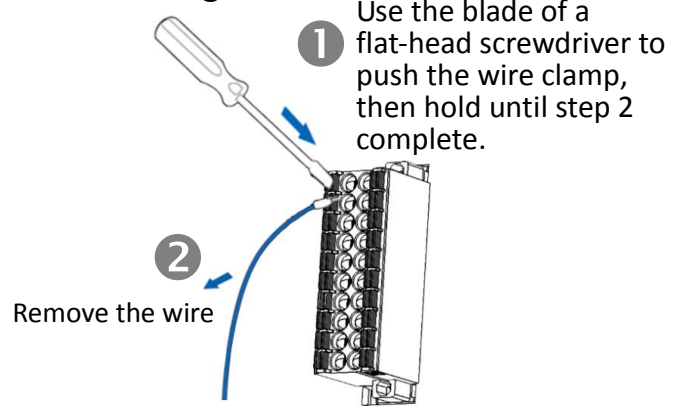
# 4 Wiring to the connector

## Wiring Tip

### Connection the wire

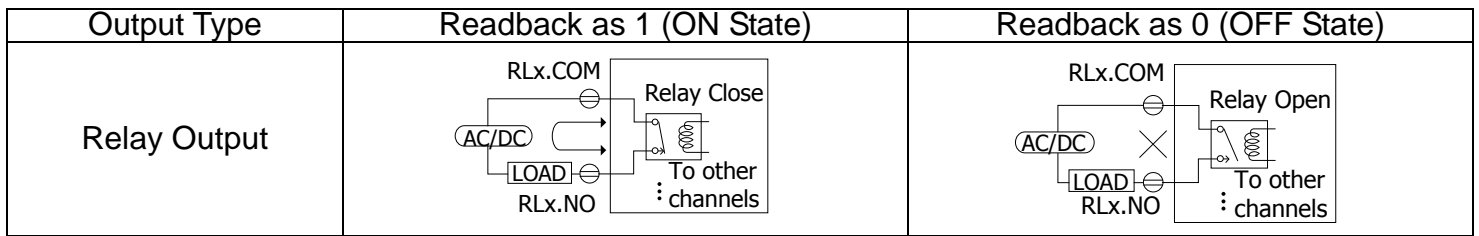


### Removing the wire



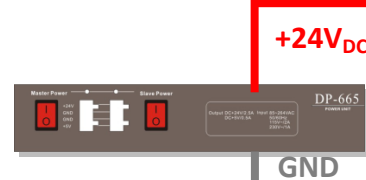
## Wire Diagrams

Digital Input/Counter	Readback as 1 (+10 ~ +50 VDC)	Readback as 0 (Open or < 4VDC)
Sink		
Source		
Digital Input/Counter	Readback as 1 (Close to GND)	Readback as 0 (Open)
Dry		



## Wiring the DO0 and DI0 Pins

2 Connect +24V external power supply to the

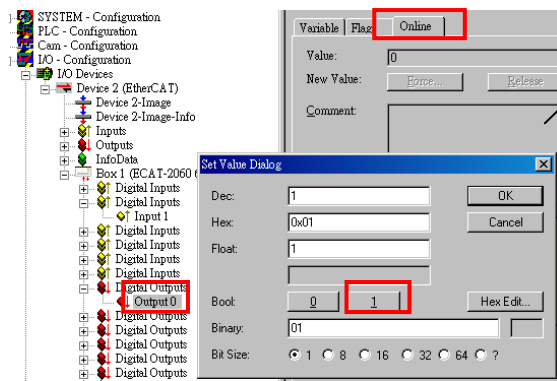


Terminal No.	Pin Assignment	Pin Assignment	Terminal No.
1	NO0	GND	2
3	COM0	DI0	4
5	NO1	DI1	6
7	COM1	DI2	8
9	NO2	DI3	10
11	COM2	DI4	12
13	NO3	DI5	14
15	COM3	DI.COM	16
17	NO4	NO5	18
19	COM4	COM5	20

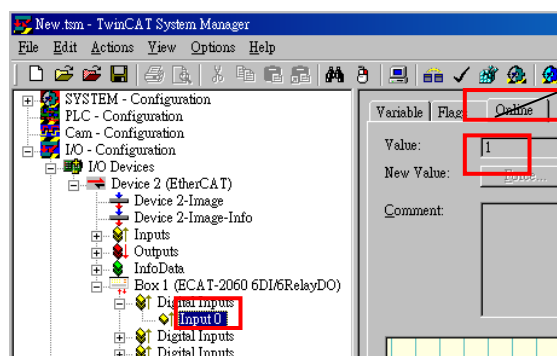
1 Connect the COM0(Pin3) to the DI0 (Pin4)

3 Connect the GND on external power supply to the DI.COM(Pin16)

## Verifying the DI and DO functionality



In the left-hand of the window, click on the Digital Output0. In the right-hand of the windows, click the online. Click Write. Click 1 (Configure DO0 to Logic1).



In the left-hand of the window, click Digital Input0 In the right-hand of the windows, click the online. Check Value is 1.



## Related Information

Product Page:

[http://www.icpdas.com/root/product/solutions/industrial\\_communication/fieldbus/ethercat/io\\_module/ecat-2060.html](http://www.icpdas.com/root/product/solutions/industrial_communication/fieldbus/ethercat/io_module/ecat-2060.html)

Documentation:

[ftp://ftp.icpdas.com/pub/cd/fieldbus\\_cd/ethercat/slave/ecat-2000/](ftp://ftp.icpdas.com/pub/cd/fieldbus_cd/ethercat/slave/ecat-2000/)

ESI file:

[http://ftp.icpdas.com/pub/cd/fieldbus\\_cd/ethercat/slave/ecat-2000/software/](http://ftp.icpdas.com/pub/cd/fieldbus_cd/ethercat/slave/ecat-2000/software/)

DP-665(Optional) Product Page:

[http://www.icpdas.com/products/Accessories/power\\_supply/dp-665.htm](http://www.icpdas.com/products/Accessories/power_supply/dp-665.htm)