

# 快速入門指南

## for ECAT-2051-32

繁體中文 / 2016 年 7 月 / 版本 1.0

# 1 檢查配件

產品包裝內應包含下列配件

ECAT-2000 系列模組 x 1

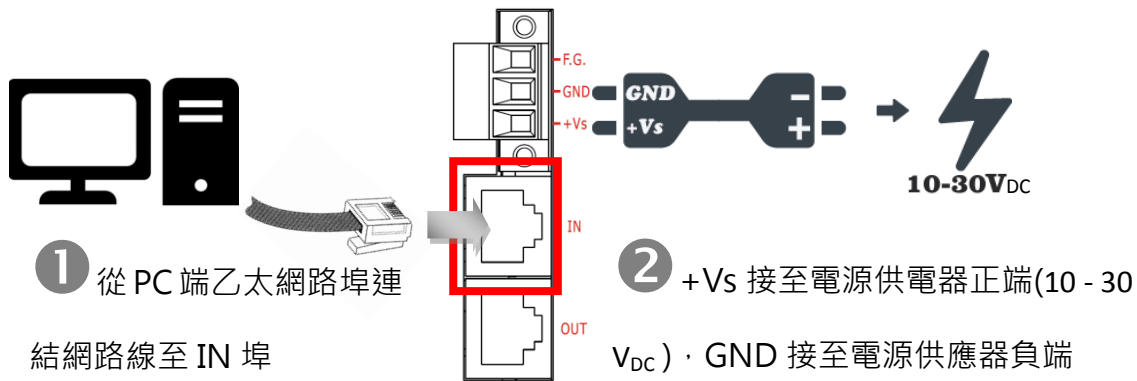


快速入門指南 (本文件) x 1

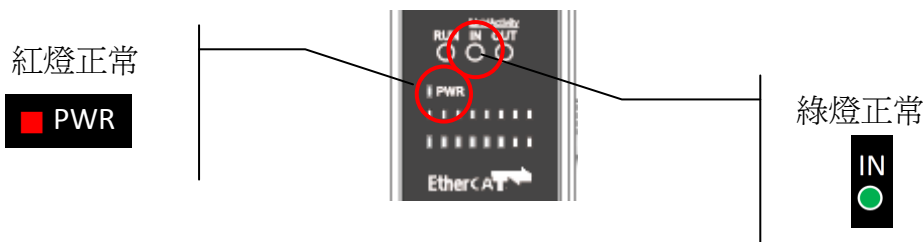


# 2 連接主站及電源

模組上電及加入至 EtherCAT 網路



確認模組上燈號顯示是否正常



# 3 搜尋模組



## ESI 檔案

至官方網站下載最新版本的 ESI 檔案(ICPDAS ECAT-2000.xml)

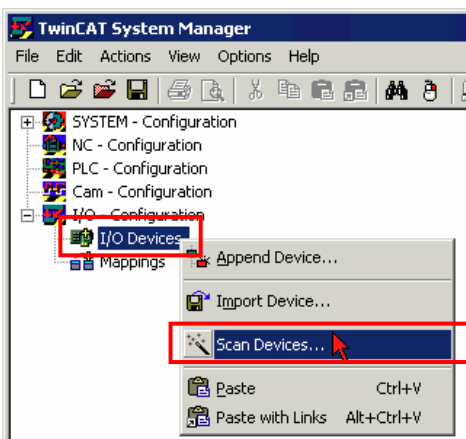
 [http://ftp.icpdas.com/pub/cd/fieldbus\\_cd/ethercat/slave/ecat-2000/software/](http://ftp.icpdas.com/pub/cd/fieldbus_cd/ethercat/slave/ecat-2000/software/)

## 安裝 ESI 檔案

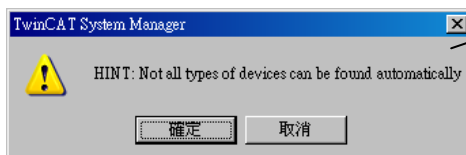
複製 ICPDAS ECAT-2000.xml 檔案至 EtherCAT Master 工具的資料夾

軟體名稱	預設路徑
Beckhoff EtherCAT Configuration	C:\EtherCAT Configurator\EtherCAT
Beckhoff TwinCAT 3.X	C:\TwinCAT\3.x\Config\lo\EtherCAT
Beckhoff TwinCAT 2.X	C:\TwinCAT\lo\EtherCAT

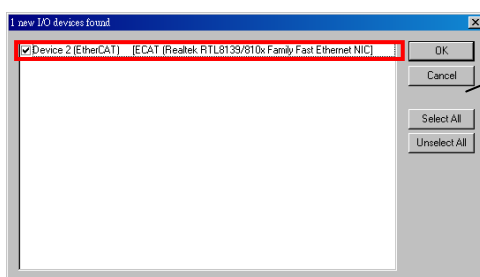
## 使用 EtherCAT Master 軟體(以 Beckhoff TwinCAT 2.X 為例)來操作



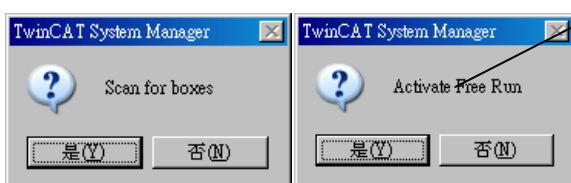
開啟模組電源  
開啟 TwinCAT System Manager(Config mode)  
I/O Devices-> 按右鍵-> Scan Devices...



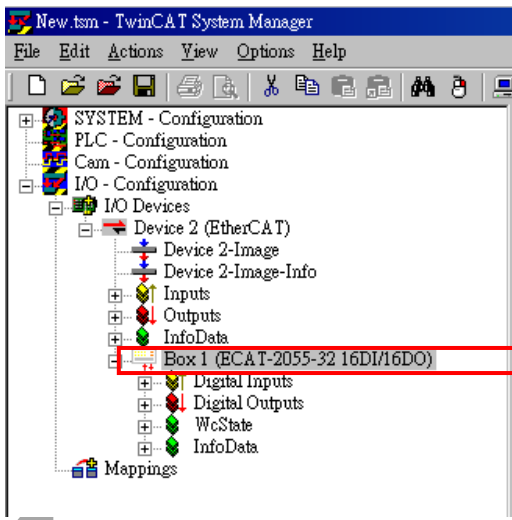
按下確認鍵



選擇連接的網路卡並按下"OK"



接連二個對話框請按下"是(Y)"

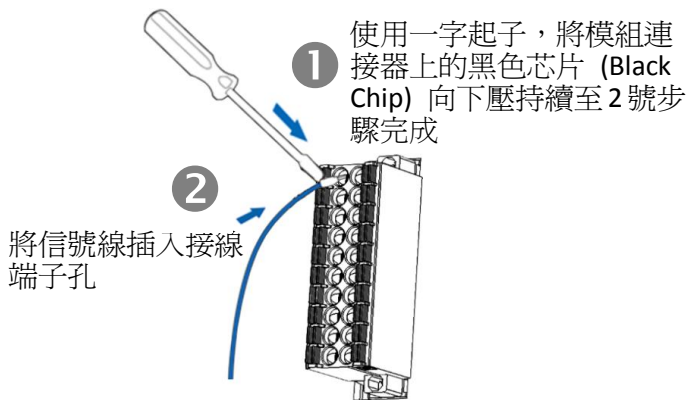


在左側視窗可以找到正確的 ECAT-2000 模組

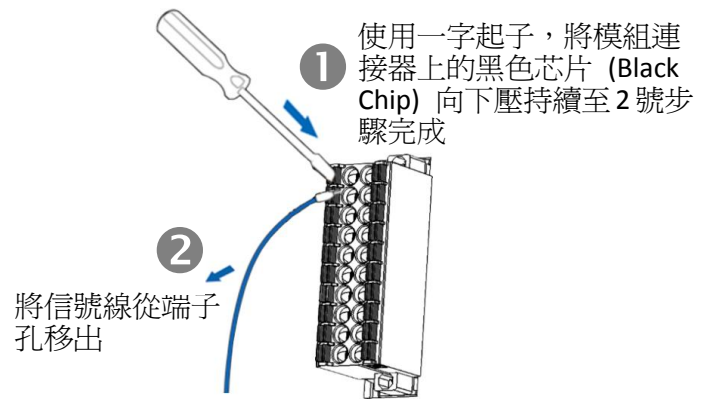
# 4 連接 I/O 自我測試

## 接線技巧

### 接線



### 移除接線



## 接線圖

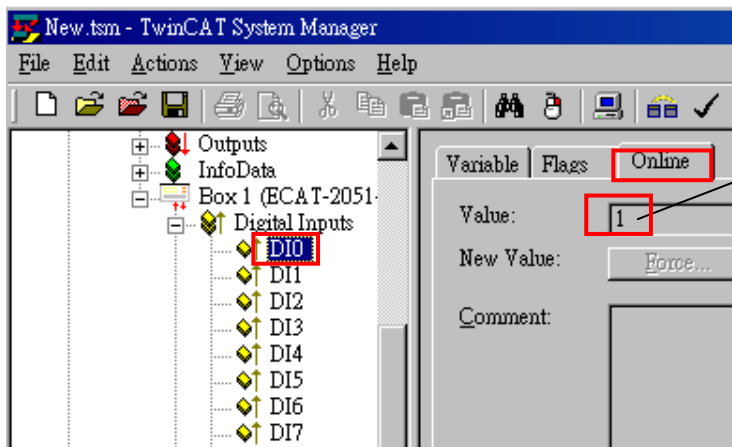
Digital Input/Counter	Readback as 1 (+10 ~ +50 VDC)	Readback as 0 (Open or < 4VDC)
Sink		
Source		
Digital Input/Counter	Readback as 1 (Close to GND)	Readback as 0 (Open)
Dry		

## 連接 DI 通道 0

Terminal No.	Pin Assignment	Pin Assignment	Terminal No.
1	GND	GND	19
2	DI16	DI0	20
3	DI17	DI1	21
4	DI18	DI2	22
5	DI19	DI3	23
6	DI20	DI4	24
7	DI21	DI5	25
8	DI22	DI6	26
9	DI23	DI7	27
10	DI24	DI8	28
11	DI25	DI9	29
12	DI26	DI10	30
13	DI27	DI11	31
14	DI28	DI12	32
15	DI29	DI13	33
16	DI30	DI14	34
17	DI31	DI15	35
18	DI.COM	DI.COM	36

連接 DI0(Pin20) 至 GND (Pin19)

## 驗證 DI 功能



在左側視窗樹狀分支點選 DI0  
在右側視窗點選 Online 切換欄位  
檢查 Value 值是否為 1



## 參考資訊

產品網頁:

[http://www.icpdas.com/root/product/solutions/industrial\\_communication/fieldbus/ethercat/io\\_module/ecat-2051-32\\_tc.html](http://www.icpdas.com/root/product/solutions/industrial_communication/fieldbus/ethercat/io_module/ecat-2051-32_tc.html)

相關文件:

[ftp://ftp.icpdas.com/pub/cd/fieldbus\\_cd/ethercat/slave/ecat-2000/](ftp://ftp.icpdas.com/pub/cd/fieldbus_cd/ethercat/slave/ecat-2000/)

ESI:

[http://ftp.icpdas.com/pub/cd/fieldbus\\_cd/ethercat/slave/ecat-2000/software/](http://ftp.icpdas.com/pub/cd/fieldbus_cd/ethercat/slave/ecat-2000/software/)

DP-665 產品網頁(選購品):

[http://www.icpdas.com/products/Accessories/power\\_supply/dp-665.htm](http://www.icpdas.com/products/Accessories/power_supply/dp-665.htm)