

Quick Start for ECAT-2051-32

English / July,2016/ Ver 1.0

1 Shipping Package

This shipping package contains the following items

1 x ECAT-2000 module

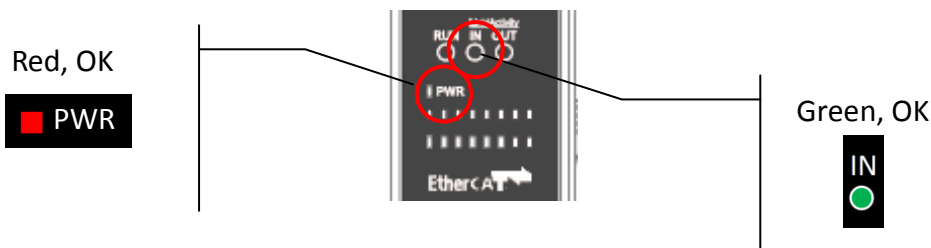
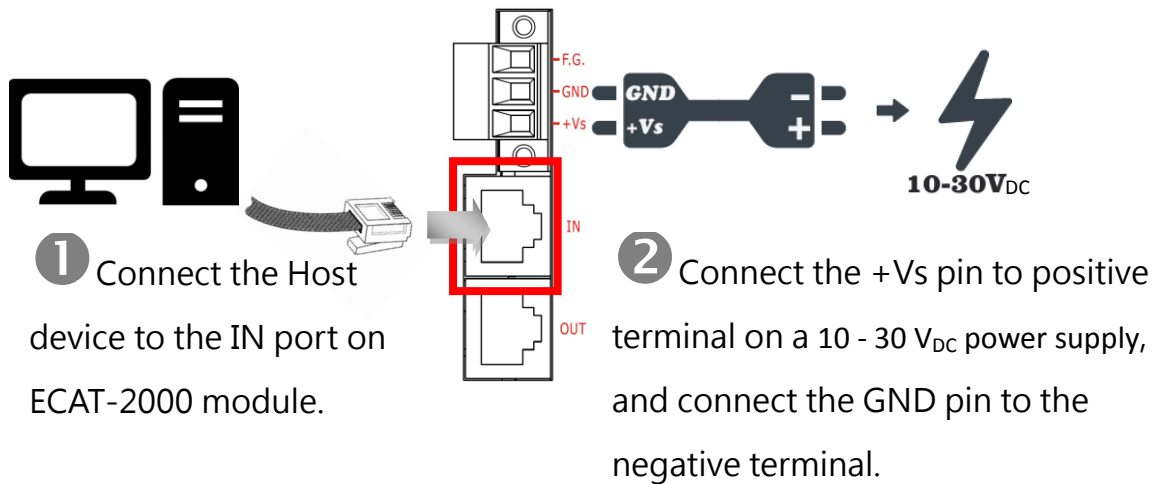


1 x Quick Start Guide (This Document)



2 Connecting the Power and Host device

Switch on module and connect it to an EtherCAT network



3 Search Modules



ESI file

The latest ESI file (ICPDAS ECAT-2000.xml) can be downloaded from ICP DAS website at

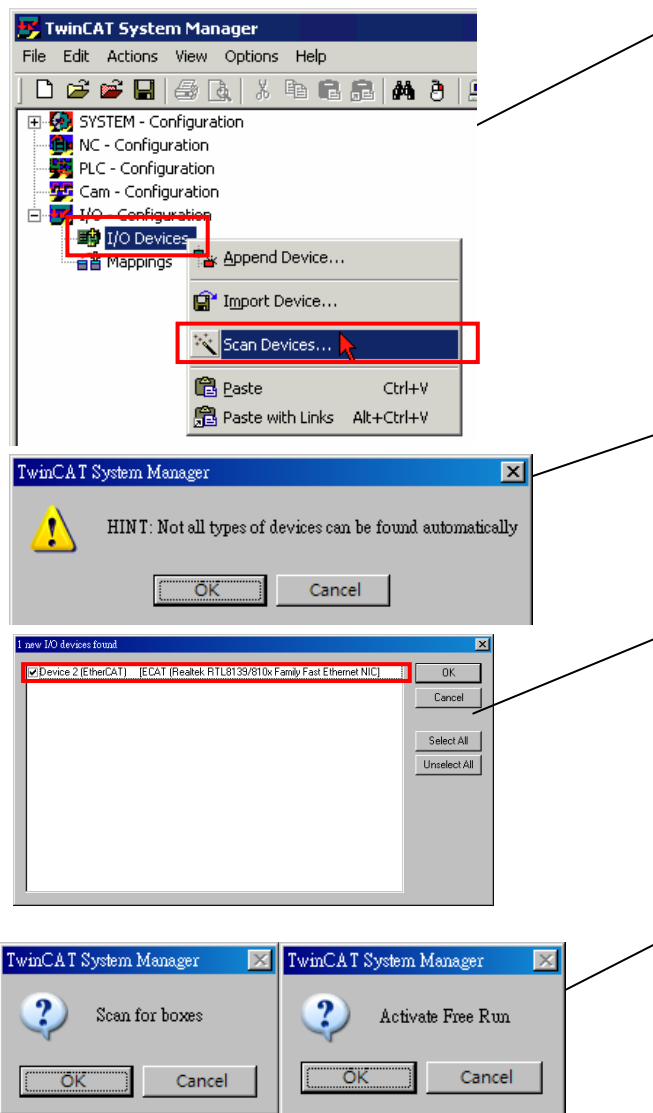
 http://ftp.icpdas.com/pub/cd/fieldbus_cd/ethercat/slave/ecat-2000/software/

Install the ESI file

Copy the “ICPDAS ECAT-2000.xml” file to the Master Tools installation folder, as indicated in the table below.

Software	Default Path
Beckhoff EtherCAT Configuration	C:\EtherCAT Configurator\EtherCAT
Beckhoff TwinCAT 3.X	C:\TwinCAT\3.x\Config\Io\EtherCAT
Beckhoff TwinCAT 2.X	C:\TwinCAT\Io\EtherCAT

Run the EtherCAT Master software (Beckhoff TwinCAT 2.X)



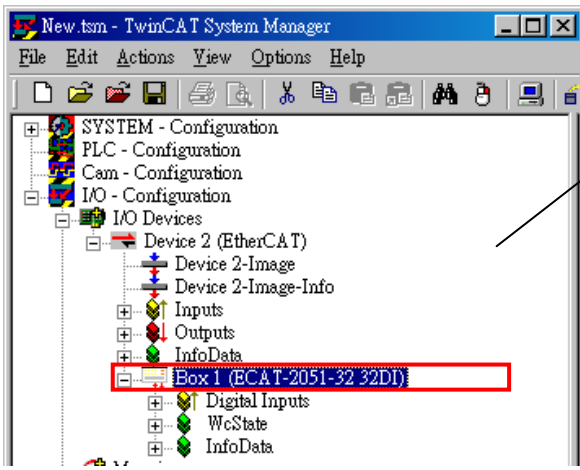
Switch on power

Execute the TwinCAT System Manager(Config mode)
I/O Devices-> Right click-> Scan Devices...

Click OK

Choose the correct network device which is
connected to ECAT-2000

Click Yes to start scanning and click Yes to
activate the free run mode for TwinCAT system
manager

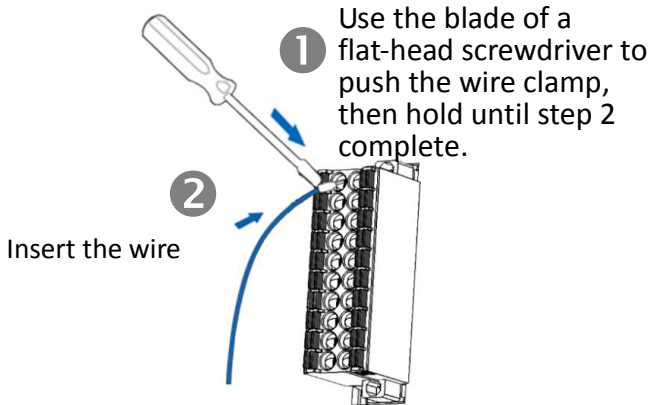


ECAT-2000 is now shown in the TwinCAT system Manager

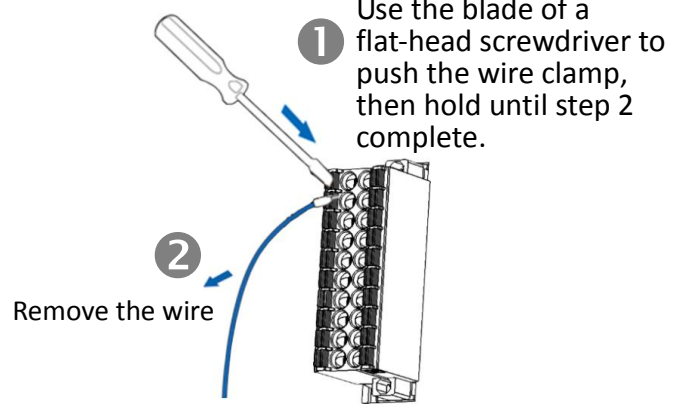
4 Wiring to the connector

Wiring Tip

Connection the wire



Removing the wire



Wire Diagrams

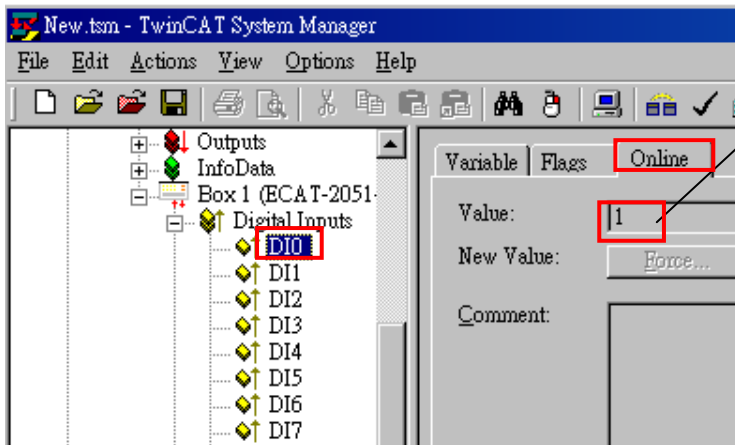
Digital Input/Counter	Readback as 1 (+10 ~ +50 VDC)	Readback as 0 (Open or < 4VDC)
Sink		
Source		
Digital Input/Counter	Readback as 1 (Close to GND)	Readback as 0 (Open)
Dry		

Wiring the DI0 Pins

Terminal No.	Pin Assignment	Pin Assignment	Terminal No.
1	GND	GND	19
2	DI16	DI0	20
3	DI17	DI1	21
4	DI18	DI2	22
5	DI19	DI3	23
6	DI20	DI4	24
7	DI21	DI5	25
8	DI22	DI6	26
9	DI23	DI7	27
10	DI24	DI8	28
11	DI25	DI9	29
12	DI26	DI10	30
13	DI27	DI11	31
14	DI28	DI12	32
15	DI29	DI13	33
16	DI30	DI14	34
17	DI31	DI15	35
18	DI.COM	DI.COM	36

Connect the DI0(Pin20) to GND (Pin19)

Verifying the DI functionality



In the left-hand of the window, click DI0.
In the right-hand of the windows, click the online.
Check Value is 1.



Related Information

Product Page:

http://www.icpdas.com/root/product/solutions/industrial_communication/fieldbus/ethercat/io_module/ecat-2051-32.html

Documentation:

ftp://ftp.icpdas.com/pub/cd/fieldbus_cd/ethercat/slave/ecat-2000/

ESI file:

http://ftp.icpdas.com/pub/cd/fieldbus_cd/ethercat/slave/ecat-2000/software/

DP-665(Optional) Product Page:

http://www.icpdas.com/products/Accessories/power_supply/dp-665.htm