

# 快速入門指南

for ECAT-2045/2057/2057-NPN/2057-8P8N

繁體中文 / 2016 年 7 月 / 版本 1.0

## 1 檢查配件

產品包裝內應包含下列配件

ECAT-2000 系列模組 x 1

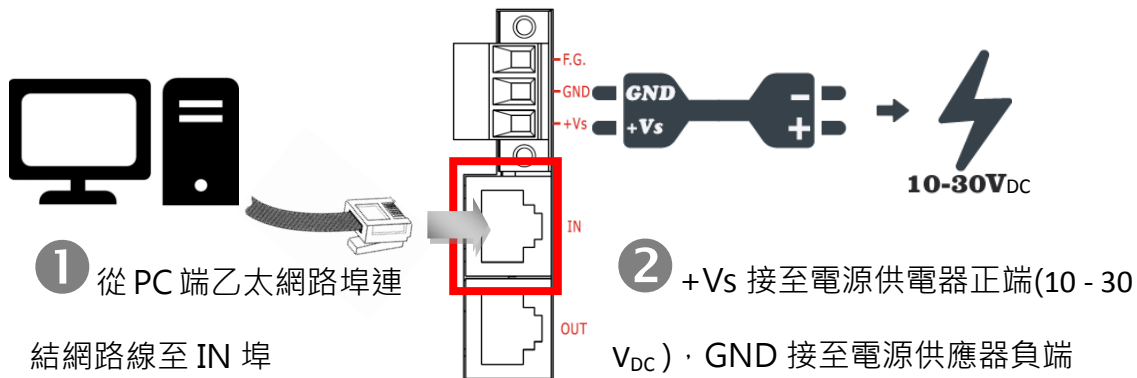


快速入門指南 (本文件) x 1

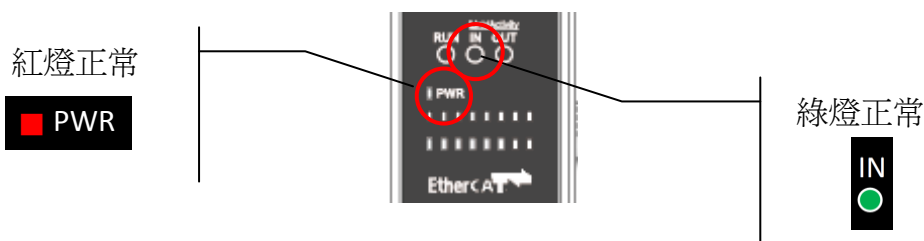


## 2 連接主站及電源

模組上電及加入至 EtherCAT 網路



確認模組上燈號顯示是否正常



# 3 搜尋模組



## ESI 檔案

至官方網站下載最新版本的 ESI 檔案(ICPDAS ECAT-2000.xml)

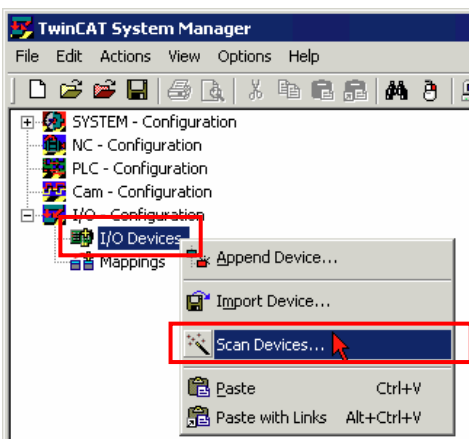
 [http://ftp.icpdas.com/pub/cd/fieldbus\\_cd/ethercat/slave/ecat-2000/software/](http://ftp.icpdas.com/pub/cd/fieldbus_cd/ethercat/slave/ecat-2000/software/)

## 安裝 ESI 檔案

複製 ICPDAS ECAT-2000.xml 檔案至 EtherCAT Master 工具的資料夾

軟體名稱	預設路徑
Beckhoff EtherCAT Configuration	C:\EtherCAT Configurator\EtherCAT
Beckhoff TwinCAT 3.X	C:\TwinCAT\3.x\Config\lo\EtherCAT
Beckhoff TwinCAT 2.X	C:\TwinCAT\lo\EtherCAT

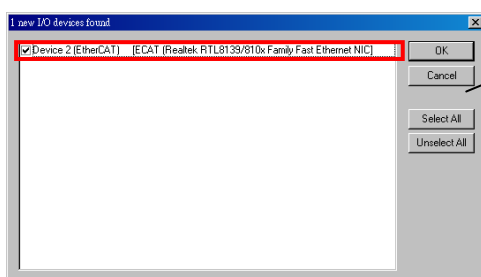
## 使用 EtherCAT Master 軟體(以 Beckhoff TwinCAT 2.X 為例)來操作



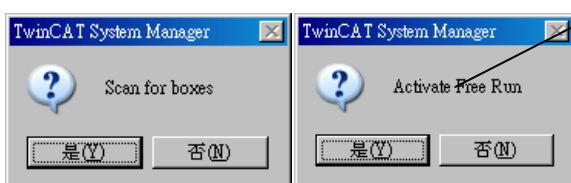
開啟模組電源  
開啟 TwinCAT System Manager(Config mode)  
I/O Devices-> 按右鍵-> Scan Devices...



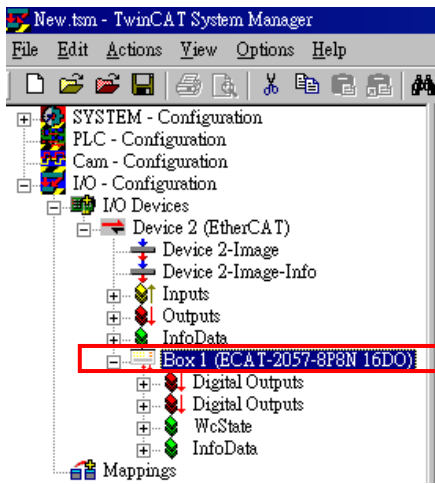
按下確認鍵



選擇連接的網路卡並按下"OK"



接連二個對話框請按下"是(Y)"

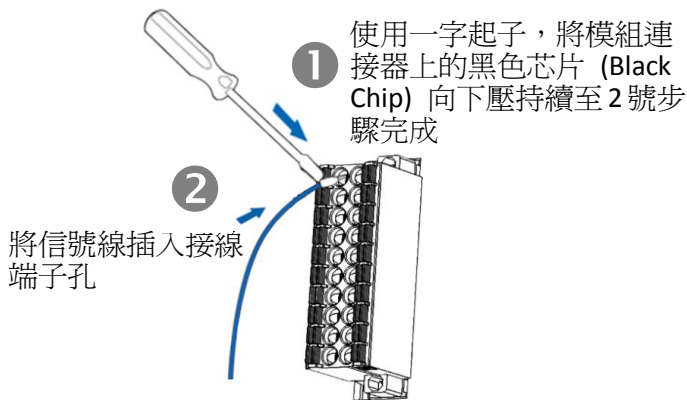


在左側視窗可以找到正確的 ECAT-2000 模組

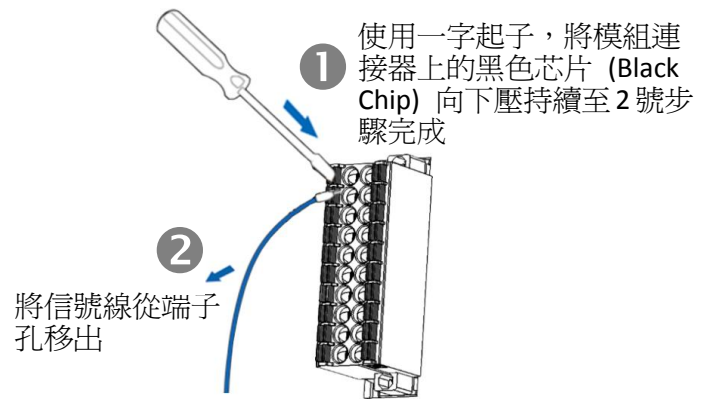
# 4 連接 I/O 自我測試

## 接線技巧

### 接線



### 移除接線



## 接線圖

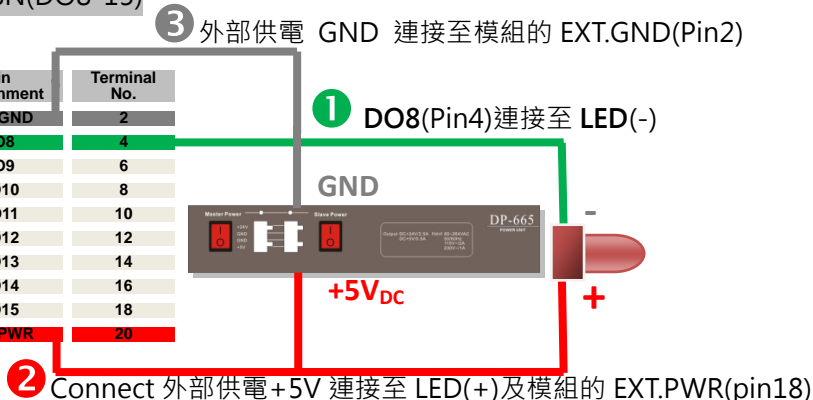
Module Name	ECAT-2045 ECAT-2057-NPN ECAT-2057-8P8N (DO8-15)		ECAT-2057 ECAT-2057-8P8N(DO0-7)	
	Sink		Source	
Output Type	ON State Readback as 1	OFF State Readback as 0	ON State Readback as 1	OFF State Readback as 0
Drive Relay				
Resistance				

## 連接 DO 通道

ECAT-2045/2057-NPN/2057-8P8N(DO8-15)

Terminal No.	Pin Assignment
1	EXT.GND
3	DO0
5	DO1
7	DO2
9	DO3
11	DO4
13	DO5
15	DO6
17	DO7
19	EXT.PWR

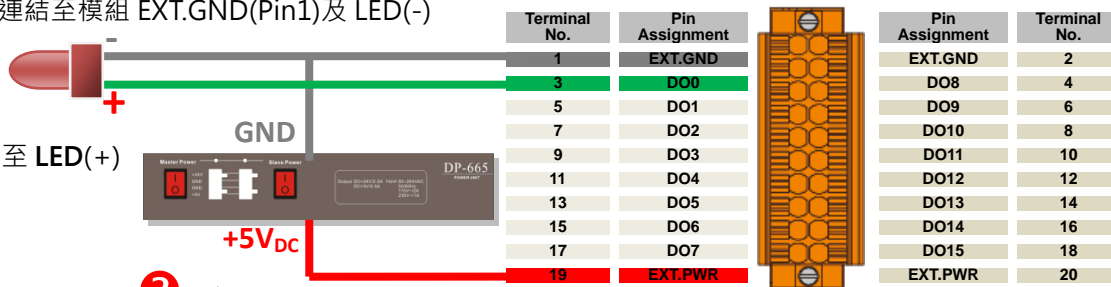
Pin Assignment	Terminal No.
EXT.GND	2
DO8	4
DO9	6
DO10	8
DO11	10
DO12	12
DO13	14
DO14	16
DO15	18
EXT.PWR	20



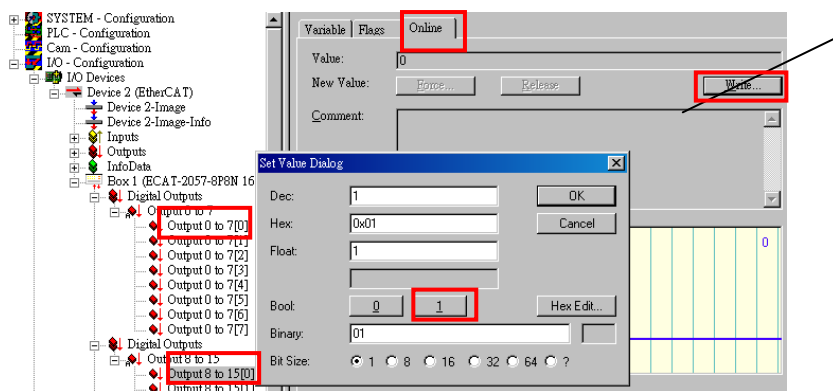
ECAT-2057/2057-8P8N(DO0-7)

3 外部供電 GND 連結至模組 EXT.GND(Pin1)及 LED(-)

1 模組 DO0(Pin3)連接至 LED(+)



## 驗證 DO 功能



在左側視窗樹狀分支點選 Output 0 to 7 或 8-15  
後點選 Output 0 to 7[0]或 Output 8-15[0]

在右側視窗點選 Online 切換欄位

按下 Write 鍵

在對話盒上按下 1 把 DO0 或 DO8 設為 Logic 1

LED 亮起



## 參考資訊

產品網頁:

[http://www.icpdas.com/root/product/solutions/industrial\\_communication/fieldbus/ethercat/io\\_module/ecat-2045\\_tc.html](http://www.icpdas.com/root/product/solutions/industrial_communication/fieldbus/ethercat/io_module/ecat-2045_tc.html)  
[http://www.icpdas.com/root/product/solutions/industrial\\_communication/fieldbus/ethercat/io\\_module/ecat-2057\\_tc.html](http://www.icpdas.com/root/product/solutions/industrial_communication/fieldbus/ethercat/io_module/ecat-2057_tc.html)

相關文件:

[ftp://ftp.icpdas.com/pub/cd/fieldbus\\_cd/ethercat/slave/ecat-2000/](ftp://ftp.icpdas.com/pub/cd/fieldbus_cd/ethercat/slave/ecat-2000/)  
 ESI:  
[http://ftp.icpdas.com/pub/cd/fieldbus\\_cd/ethercat/slave/ecat-2000/software/](http://ftp.icpdas.com/pub/cd/fieldbus_cd/ethercat/slave/ecat-2000/software/)  
 DP-665 產品網頁(選購品):  
[http://www.icpdas.com/products/Accessories/power\\_supply/dp-665.htm](http://www.icpdas.com/products/Accessories/power_supply/dp-665.htm)