

---

# I-2534 and I-5534-M

## Update Firmware User Manual

### **Warranty**

All products manufactured by ICP DAS are under warranty regarding defective materials for a period of one year from the date of delivery to the original purchaser.

### **Warning**

ICP DAS assumes no liability for damages resulting from the use of this product. ICP DAS reserves the right to change this manual at any time without notice. The information furnished by ICP DAS is believed to be accurate and reliable. However, no responsibility is assumed by ICP DAS for its use, or for any infringements of patents or other rights of third parties resulting from its use.

### **Copyright**

Copyright 2012 by ICP DAS. All rights are reserved.

### **Trademark**

The names used for identification only may be registered trademarks of their respective companies.

---

## Tables of Content

<b>1</b>	<b>Prepare Hardware .....</b>	<b>3</b>
<b>2</b>	<b>Prepare Software .....</b>	<b>3</b>
<b>3</b>	<b>Start Download Firmware.....</b>	<b>4</b>

---

## 1 Prepare Hardware

Before updating the firmware, users need to prepare the following hardware.

- (1) I-2534 or I-5534-M module.
- (2) The I-2534 needs another RS-232 cable (CA-0910).



- (3) A PC or notebook with windows OS and at least one RS-232 port.

## 2 Prepare Software

Before updating the firmware, users need to prepare the following software.

- (1) New version firmware

The I-2534 and I-5534-M use the same firmware which is named "I2534\_vxxx.fw". The xxx of the firmware name indicates the version number. For example:

I2534\_V100 represents version 1.00.

I2534\_V123 means version 1.23.

- (2) Firmware update tool

The firmware update tool can be free downloaded from the following web site:

[http://ftp.icpdas.com/pub/cd/fieldbus\\_cd/can/converter/i-2534\\_and\\_i-5534-m/setup/i-2534%20and%20i-5534-m%20setup%20v1.1.exe](http://ftp.icpdas.com/pub/cd/fieldbus_cd/can/converter/i-2534_and_i-5534-m/setup/i-2534%20and%20i-5534-m%20setup%20v1.1.exe)

or get it in the product CD with the following path:

[CAN\Converter\i-2534\\_and\\_i-5534-m\setup\i-2534\\_and\\_i-5534-m\\_setup\\_v1.1.exe](#)

After finishing the installation of the update tool; the firmware update tool will be located in the path.

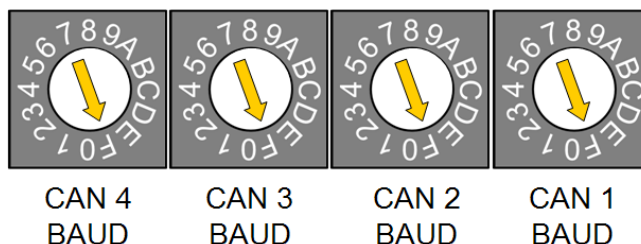
[C:\ICPDAS\I-2534\\_I-5534-M\Firmware\Firmware Update Tool](#)

---

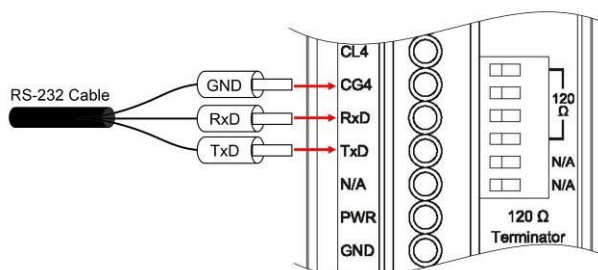
### 3 Start Download Firmware

Step 1: Power off the I-2534 or I-5534-M module.

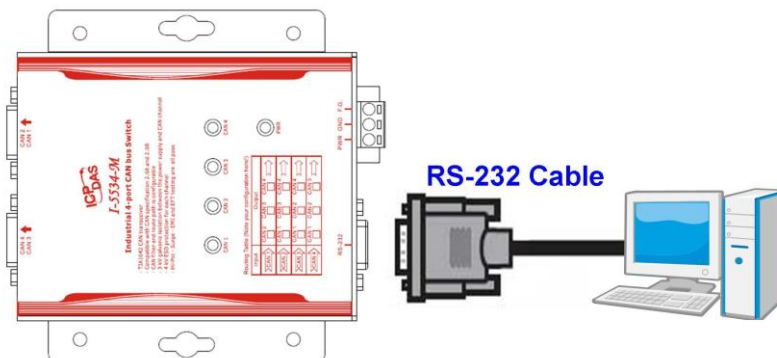
Step 2: Set these four rotary switches at the “F” position and the module will be into the firmware download mode as the following figure.



Step 3: Connect the PC available COM port with the COM port of the I-2534 or I-5534-M. When connecting to the COM port of the I-2534, the TxD pin, RxD pin and GND pin of the cable are sequentially connected to the TxD pin, RxD pin, and CG4 pin of the I-2534. The following figure illustrates the detail.



RS-232 wire connection of the I-2534



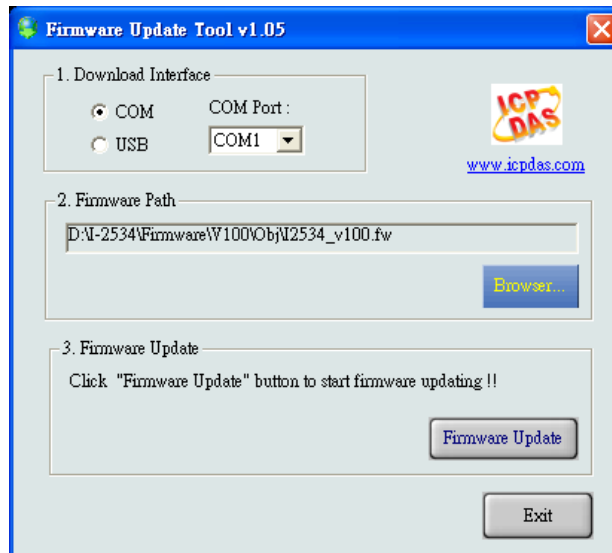
RS-232 wire connection of the I-5534-M

---

Step 4: Power on the I-2534 or I-5534-M module. If the above steps are successful, the CAN1 ~ CAN 4 LED will be twinkled sequentially. The sequence is shown below.

CAN 1 → CAN 2 → CAN3 → CAN 4 → CAN 3 → CAN 2 →  
CAN 1 → CAN 2 → .....

Step 5: Execute the “Firmware Update Tool”. The dialog is shown below.



Step 6: Select “COM” and correct COM port number in the “Download Interface” field.

Step 7: Click “Browser...” button in the “Firmware Path” and select the new version firmware. (i2534\_Vxxx.fw)

Step 8: Click “Firmware Update” button and wait a few seconds. If the download process is successful, users would see the information in the dialog. Then, users can turn the power off and configure the rotary switches according to the expected baud of each CAN port.

Step 9: If the download process is fail, users could check the cable connection, or try it again by using another RS-232 cable. The fault result may be caused by the unstable RS-232 communication. If users still could not download the firmware, please mail us. ([service@icpdas.com](mailto:service@icpdas.com) or [service.icpdas@gmail.com](mailto:service.icpdas@gmail.com))