

GW-7663 Quick Start

This Quick Start will provide information needed to get started with GW-7663. Please also consult the User Manual for detailed information on the setup and use of GW-7663.

What's In the Box ?

In addition to this guide, the package includes the following item:



GW-7663 Module



Product CD

Technical Support

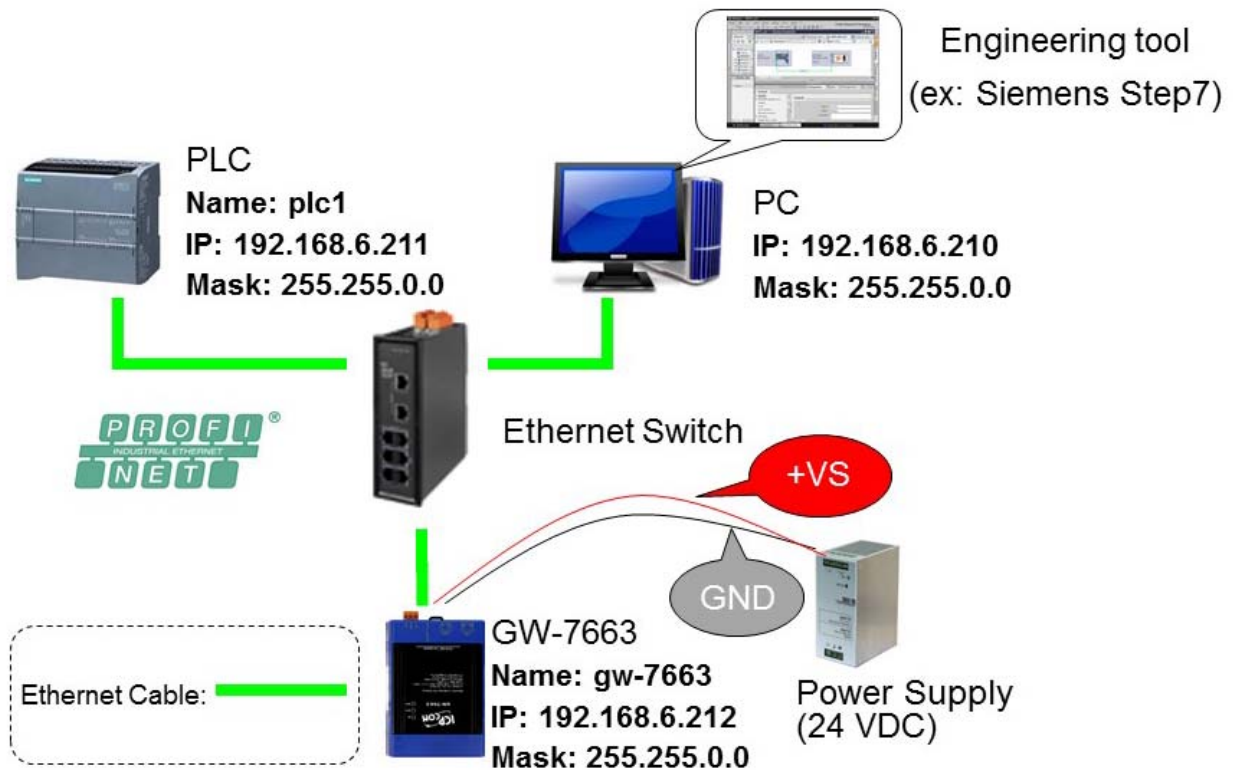
- **GW-7663 User Manual**
CD: \fieldbus_cd\profinet\converter\gw-7663>manual\
ftp://ftp.icpdas.com/pub/cd/fieldbus_cd/profinet/gateway/gw-7663/manual/
- **PROFINET Website**
http://www.icpdas.com/products/Industrial/profibus/profinet_intro.htm

Let's Start

In the following examples the S7-1200 PLC from Siemens is used. The configuration and communication is done by the program "Step 7 V11 (TIA PORTAL)" provided by Siemens. We will establish a PROFINET IO network.

1

Connecting to Network, PC, PLC and Power



2

Network Configuration

In this example, please follow the below configuration to configure the network.

PC=>

IP: 192.168.6.210
Mask: 255.255.0.0

PLC=>

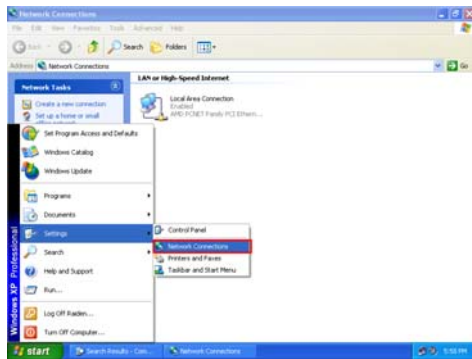
Device name: plc1
IP: 192.168.6.211
Mask: 255.255.0.0

GW-7663=>

Device name: gw-7663
IP: 192.168.6.212
Mask: 255.255.0.0

Step 1: Set PC's IP & Mask (IP=192.168.6.210, Mask=255.255.0.0)

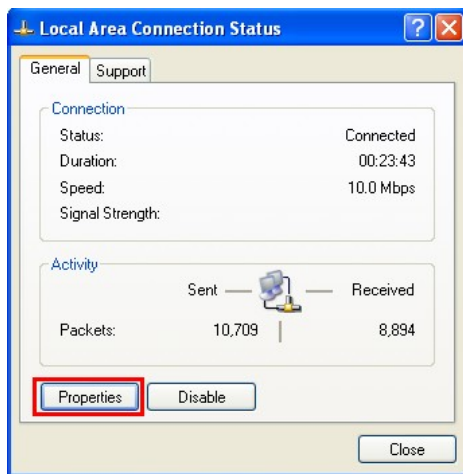
1. Click “start->Settings->Network Connections”



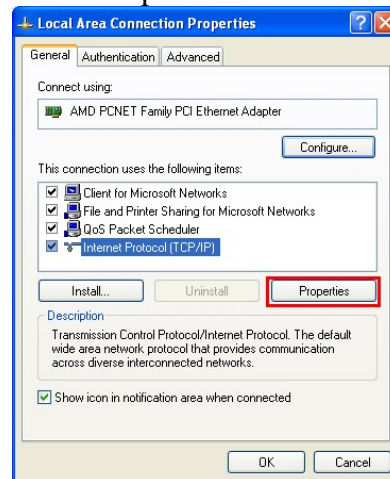
2. Double click “Local Area Connection” icon



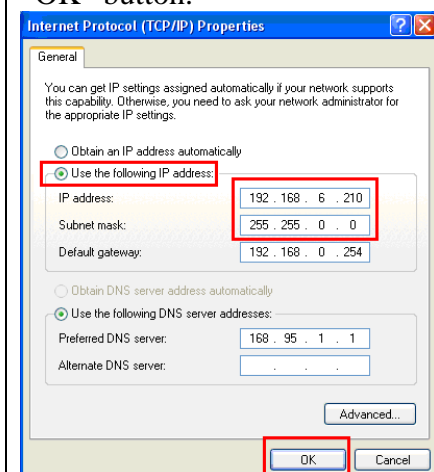
3. Click “Properties” button



4. Select “Internet Protocol(TCP/IP)” and click “Properties” button



5. Set “Internet Protocol Properties” and then click “OK” button.



3

GSD Import

In this example, please follow the step to import GSD file.

Step 1: Get GSD file

The GSD file can be obtained from companion CD or our FTP site:

CD: \fieldbus_cd\profinet\gateway\gw-7663\gsd\

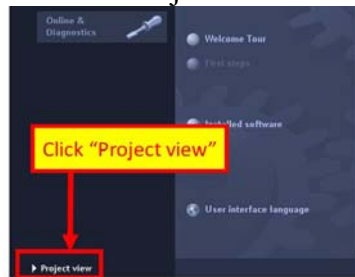
ftp://ftp.icpdas.com/pub/cd/fieldbus_cd/profinet/gateway/gw-7663/gsd/

Step 2: Import GSD file

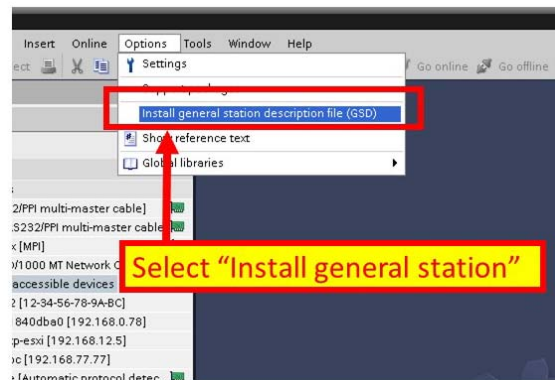
1. Double Click TIA icon to start Step 7 V11



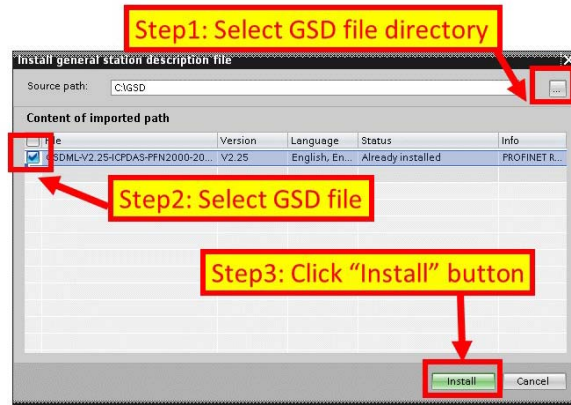
2. Click "Project view"



3. Select "Menu->Options->Install general station description file (GSD)"



4. Select and install GSD file



Note: Select the GSD file directory=>Select GSD file of GW-7663=>Click "Install" button

4 Project Setup

In this example, please follow the step to setup project.

Step 1: Create the project

1. Double Click TIA icon to start
Step 7 V11



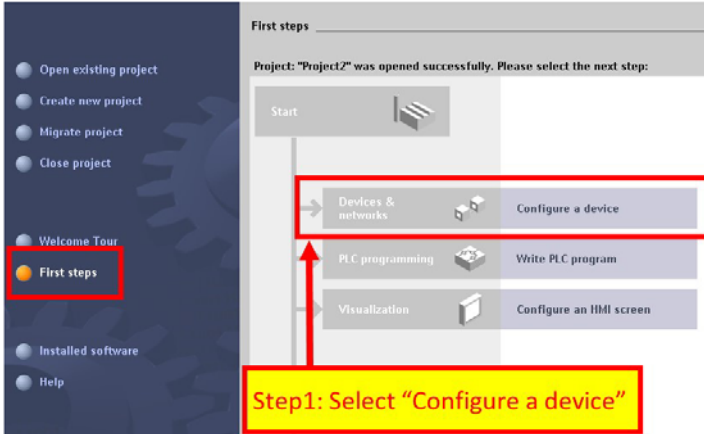
2. Create the Project



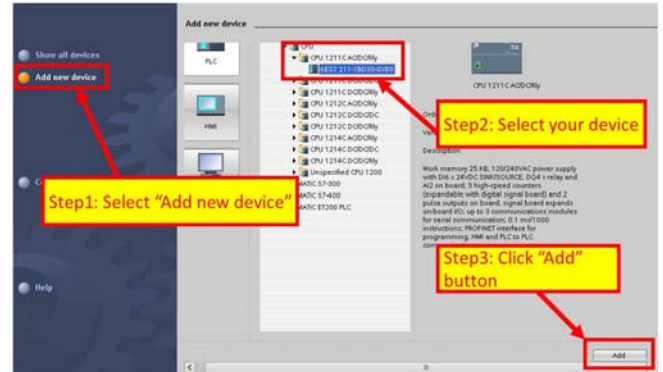
Note: Select "Create new project" => Click "Create" button

Step 2: Project configuration

1. Select "Configure a device"



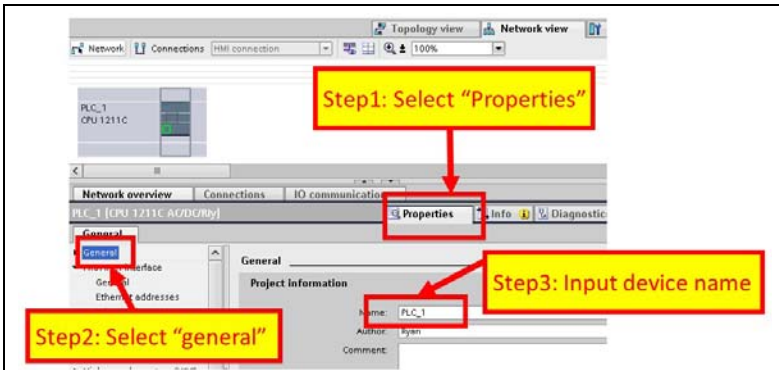
2. Select "Add new device"



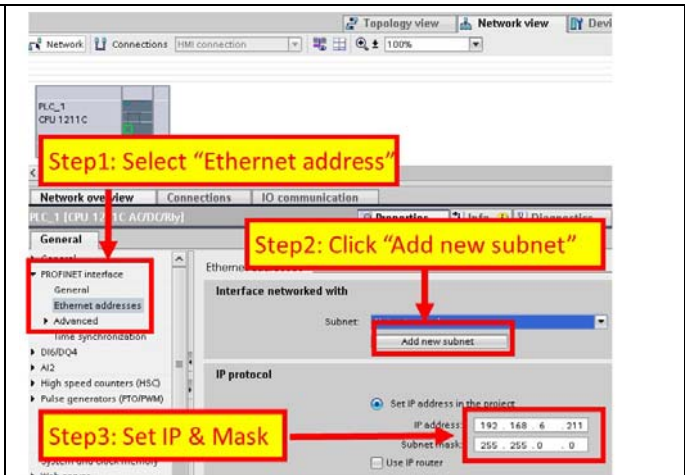
Note: Select "Add new device" => Select your PLC module => Click "Add" button

3. Set the device name of PLC to "plc1"

4. Set the IP and mask of PLC and add a new subnet

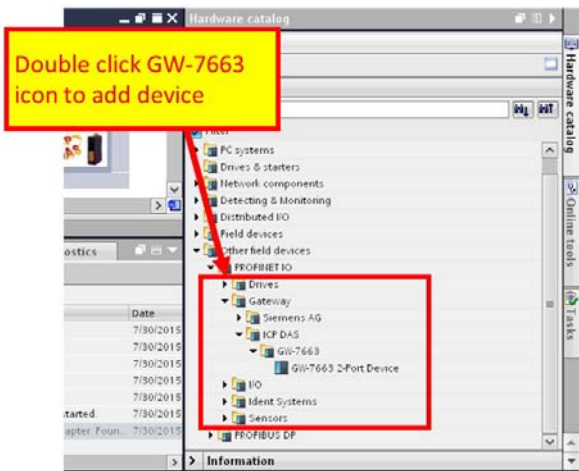


Note: Select "Properties" windows => Select "General"
=> Input device name = plc1 at "Project Information"



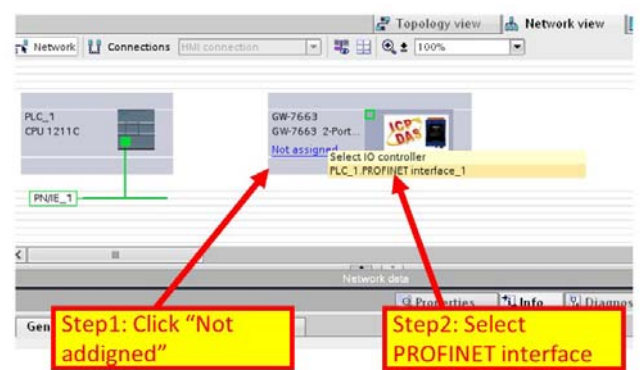
Note: Select "PROFINET Interface" => Click "Add new subnet" button at "Ethernet addresses"
=> Input IP=192.168.6.211, mask=255.255.0.0

5. Add GW-7663 module



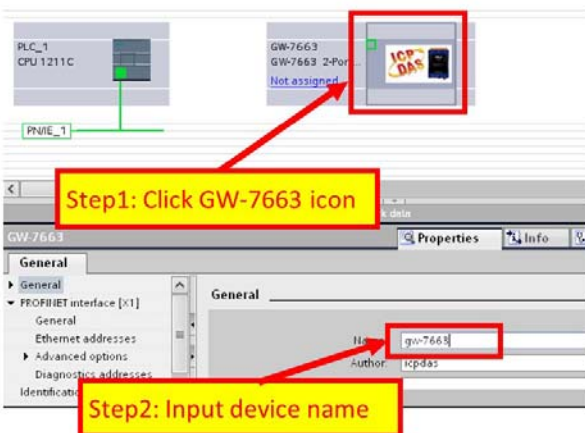
Note: Add GW-7663 device by Hardware catalog (Other field devices->PROFINET IO->Gateway->ICP DAS->GW-7663)

6. Select PROFINET interface



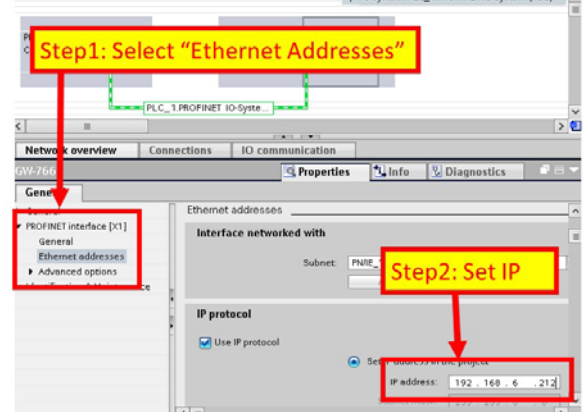
Note: Click "Not assigned" text => Select plc1.PROFINET Interface_1

7. Set device name to "GW-7663"



Note: Select GW-7663 icon => Select "Properties" => Select "General" => Input name = GW-7663 at "Project"

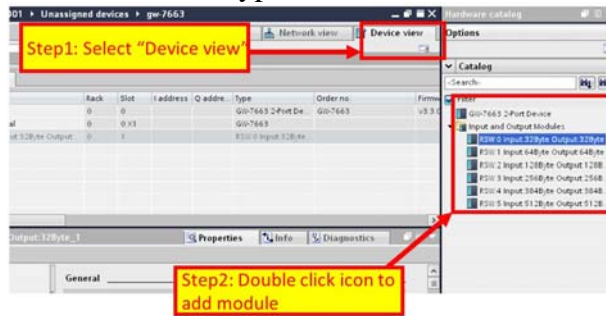
8. Set the IP of GW-7663 module



Note: Select "PROFINET Interface [X1]" => Input IP=192.168.6.212 at "IP addresses"

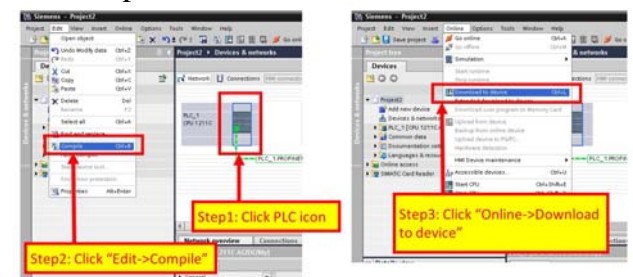
Information

9. Select module type of GW-7663 module



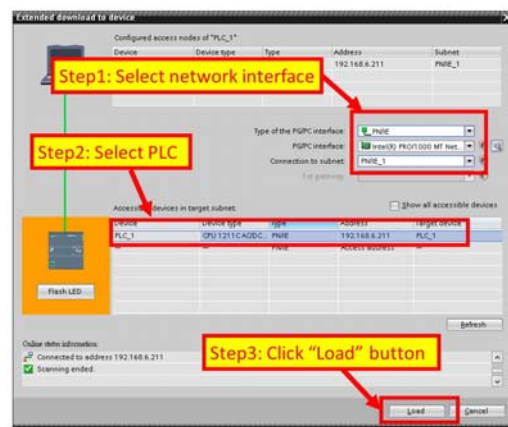
Note: Select "Device view" windows => Select "RSW:0 Input:32Byte Output:32Byte" module at "Hardware catalog" and double click the icon to add this module

10. Compile and download to device



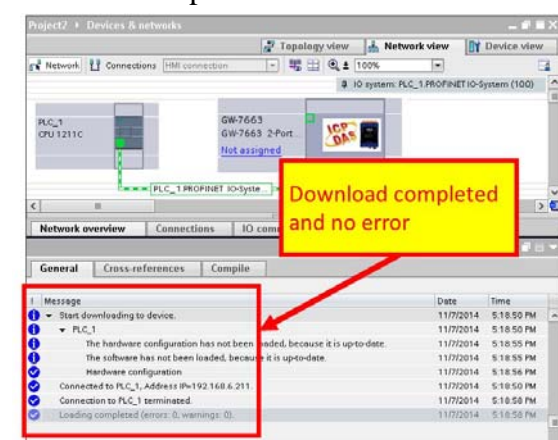
Note: Select "Network view" windows => Select PLC icon => Click compile icon => Click download icon

11. Select network interface and PLC



Note: Select network interface => Select PLC => Click "Load" button

12. Load completed



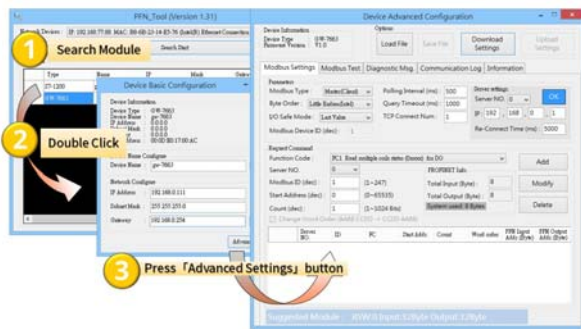
Note: Select "Info" windows, it will show "Load completed (errors: 0, warnings: 0)" message, it means download completed and no error.

At this time, the AP LED should turn on, BOOT LED and ERR LED should turn off, it means the connection between PLC and GW-7663 module is established.

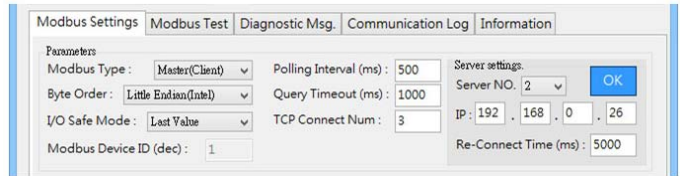
5

Module Configuration

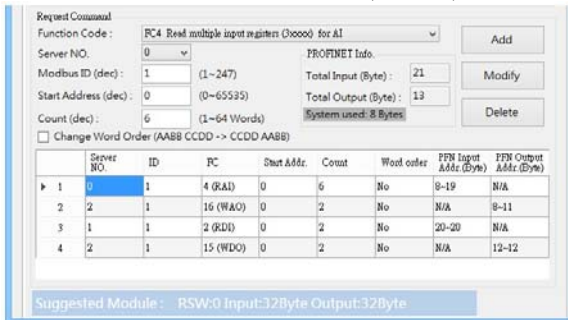
1. Open Device Advanced Configuration



2. Configure Modbus communication parameters



3. Acts as a Modbus master (Client)



4. Acts as a Modbus slave (Server)

