

Classification	Solution FAQ on EZ Data Logger				No.	4-015-02	
Author	Amber	Version	1.0.0	Date	2013/01/29	Page	1/7

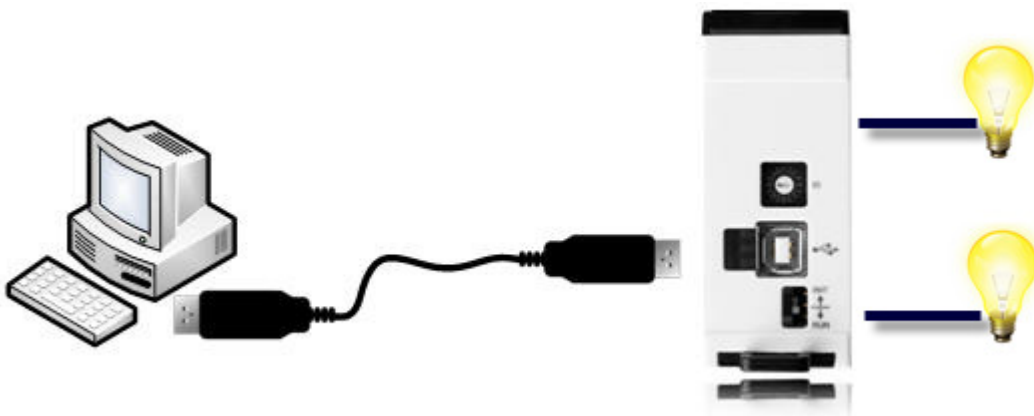
USB-2000 module solution.

Applied to:

<i>Platform</i>	<i>OS Version</i>
<i>PC</i>	<i>Windows 98/NT/2000/XP/Vista</i>

ICP DAS USB series I/O modules are highly flexible solution to acquire or output data. User can build up own PC-based control, laboratory research and so on by applying ICP DAS USB series modules. You can choose from the controllers to meet your demands for use in various industrial applications. The USB-20xx modules can be used with the EZ Data Logger to easily plan HMI and offer a variety of functions that meet different requirements of the projects, such as remote message notification function (SMS, Email), data logger (local database, SQL Server), etc.

The following example is lighting control solution and uses ICP DAS USB-2064. The USB-2064 is equipped with 8-channel power relay output that can be connected to the light facilities. You can use EZ Data Logger in the control center to instantly receive the module information, make real time monitoring of the overall status for each room more efficiently.



Classification	Solution FAQ on EZ Data Logger				No.	4-015-02	
Author	Amber	Version	1.0.0	Date	2013/01/29	Page	2/7

Step1 : Before you start to plan for EZ Data Logger, please configure the wiring and software of USB-2064 well.

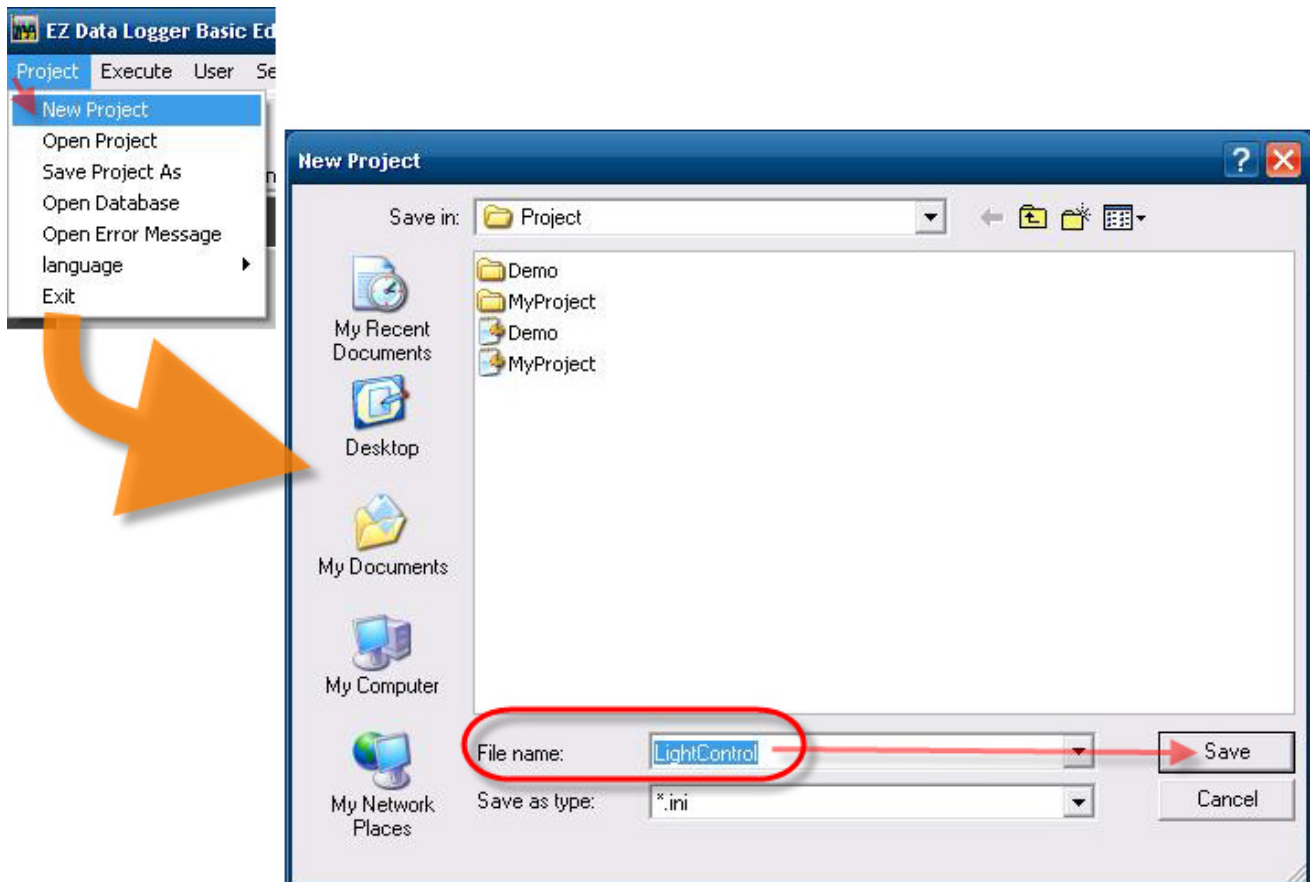
© USB-2000 series Quick Start Guide

http://ftp.icpdas.com/pub/cd/usbcd/napdos/usbio/icpdas%20usbio%20quick%20start%20guide_eng.pdf

© USB-2000 series User Manual

<http://ftp.icpdas.com/pub/cd/usbcd/napdos/usbio/icpdas%20usbio%20users%20manual.pdf>

Step2 : Open **EZ Data Logger**→ From the menu in the main form click **Project**→ **New Project**→ Type the new project name **LightControl**→ Click **Save** and then EZ Data Logger will restart automatically.

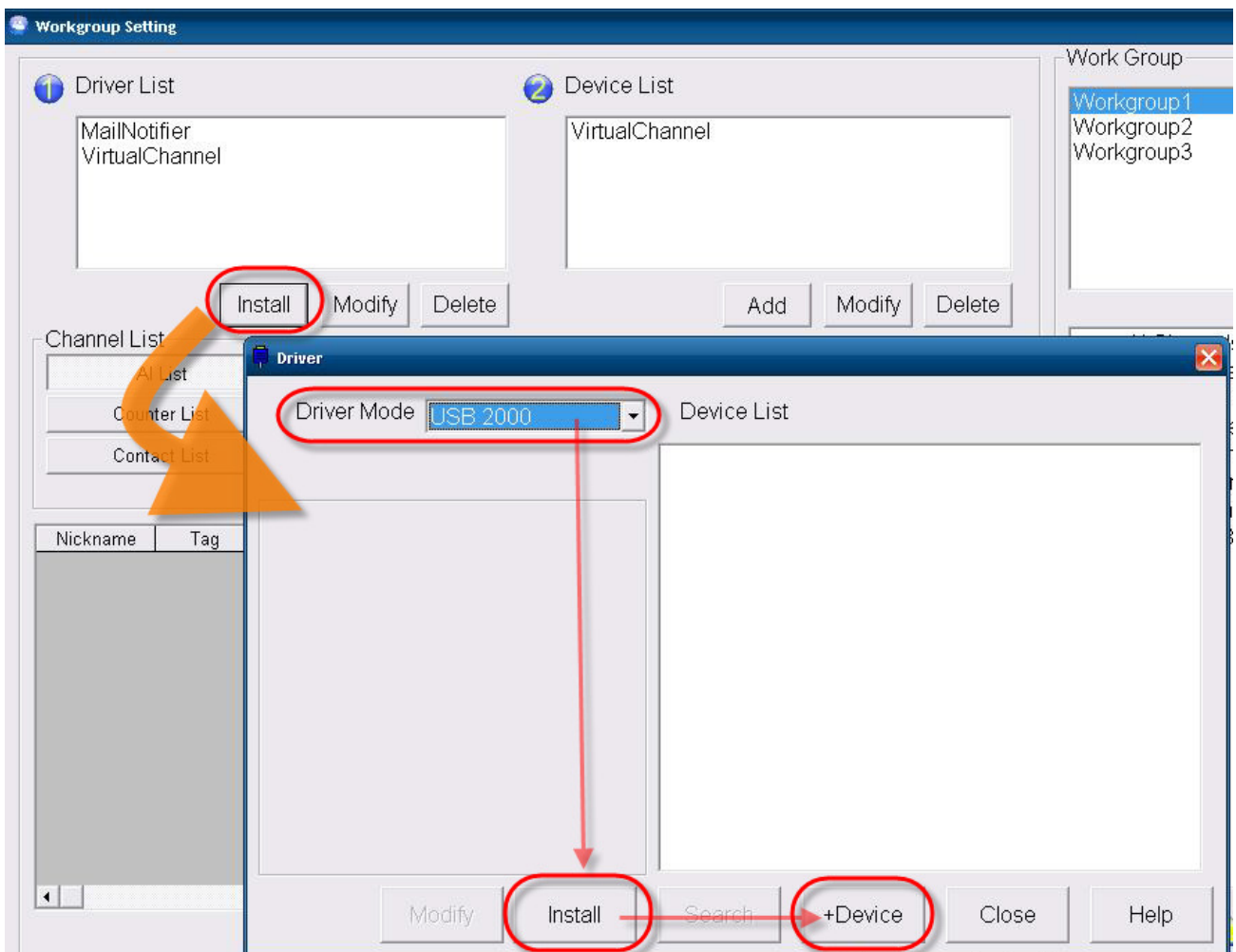


Classification	Solution FAQ on EZ Data Logger				No.	4-015-02	
Author	Amber	Version	1.0.0	Date	2013/01/29	Page	3/7

Step3 : From the button list click the **Group Setup** button.

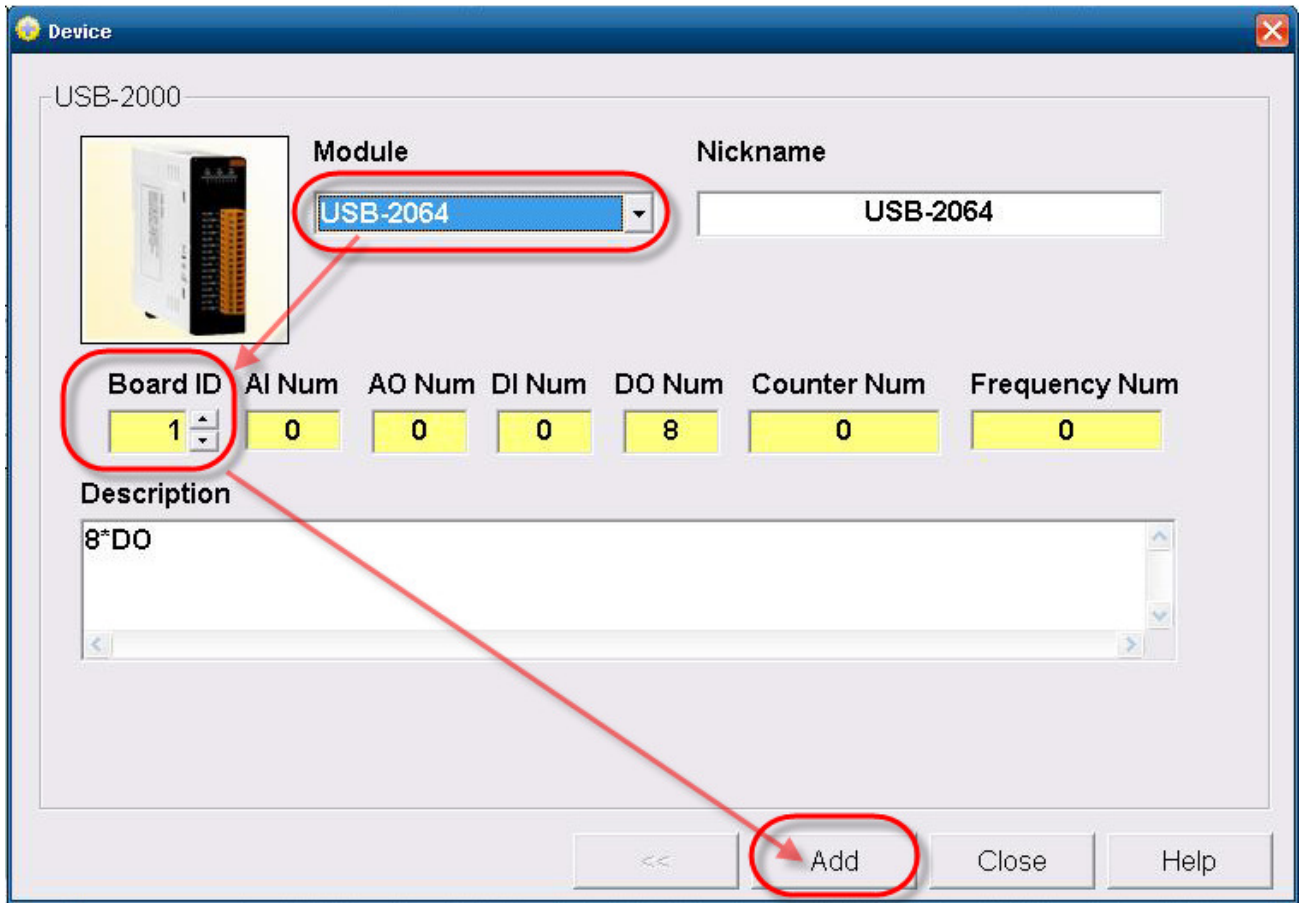


Step4 : Click the **Install** button under “Driver List” to open the “Driver” setting form→ Select **USB 2000** driver→ Click the **Install** button to add the driver→ Click the **+Device** button to open the “Device” setting form.



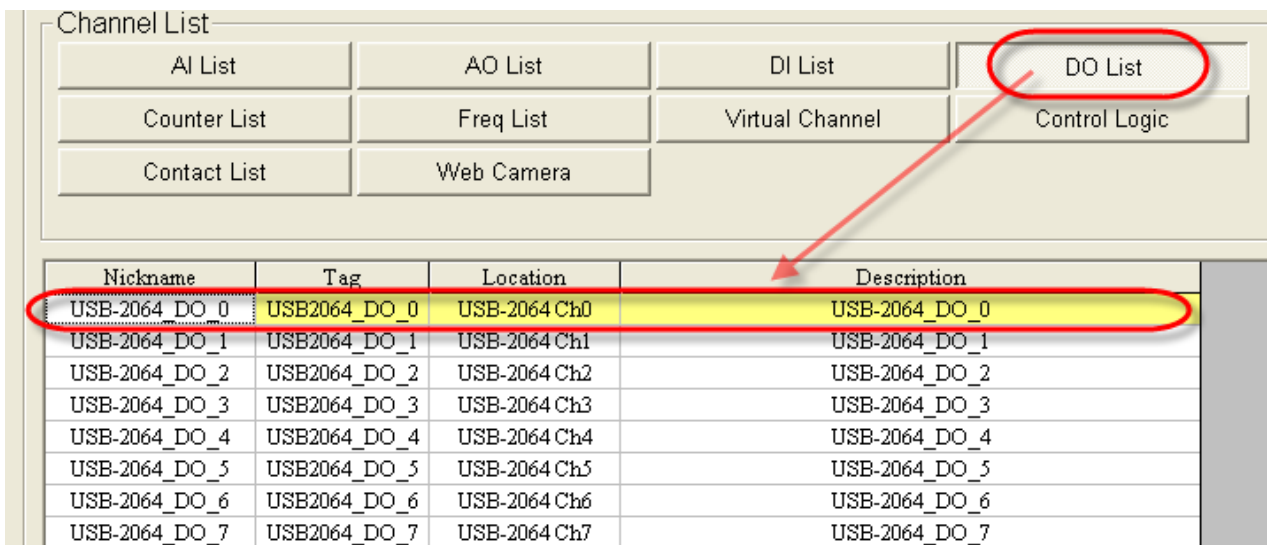
Classification	Solution FAQ on EZ Data Logger				No.	4-015-02	
Author	Amber	Version	1.0.0	Date	2013/01/29	Page	4/7

Step5 : Select **USB-2064** Module, set **Board ID** and then click the **Add** button.



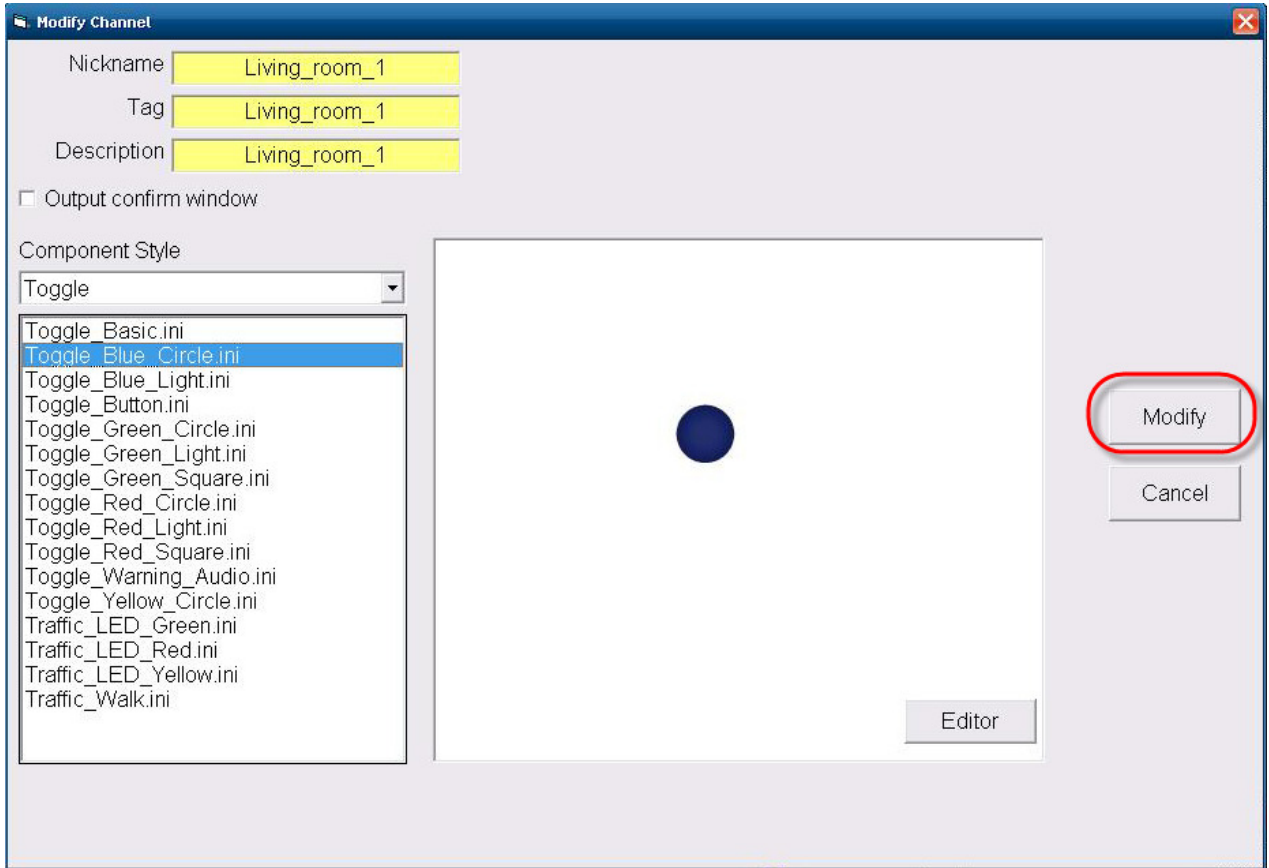
Step6 : Set the button properties of the DO channels.

6.1. Double-click on a DO channel to open its setting form.



Classification	Solution FAQ on EZ Data Logger				No.	4-015-02	
Author	Amber	Version	1.0.0	Date	2013/01/29	Page	5/7

6.2. Set its **name** and **component Style**, and then click the **Modify** button to save.



Step7 : Set the other DO channels like **Step6**. The configuration is as the below picture ↓

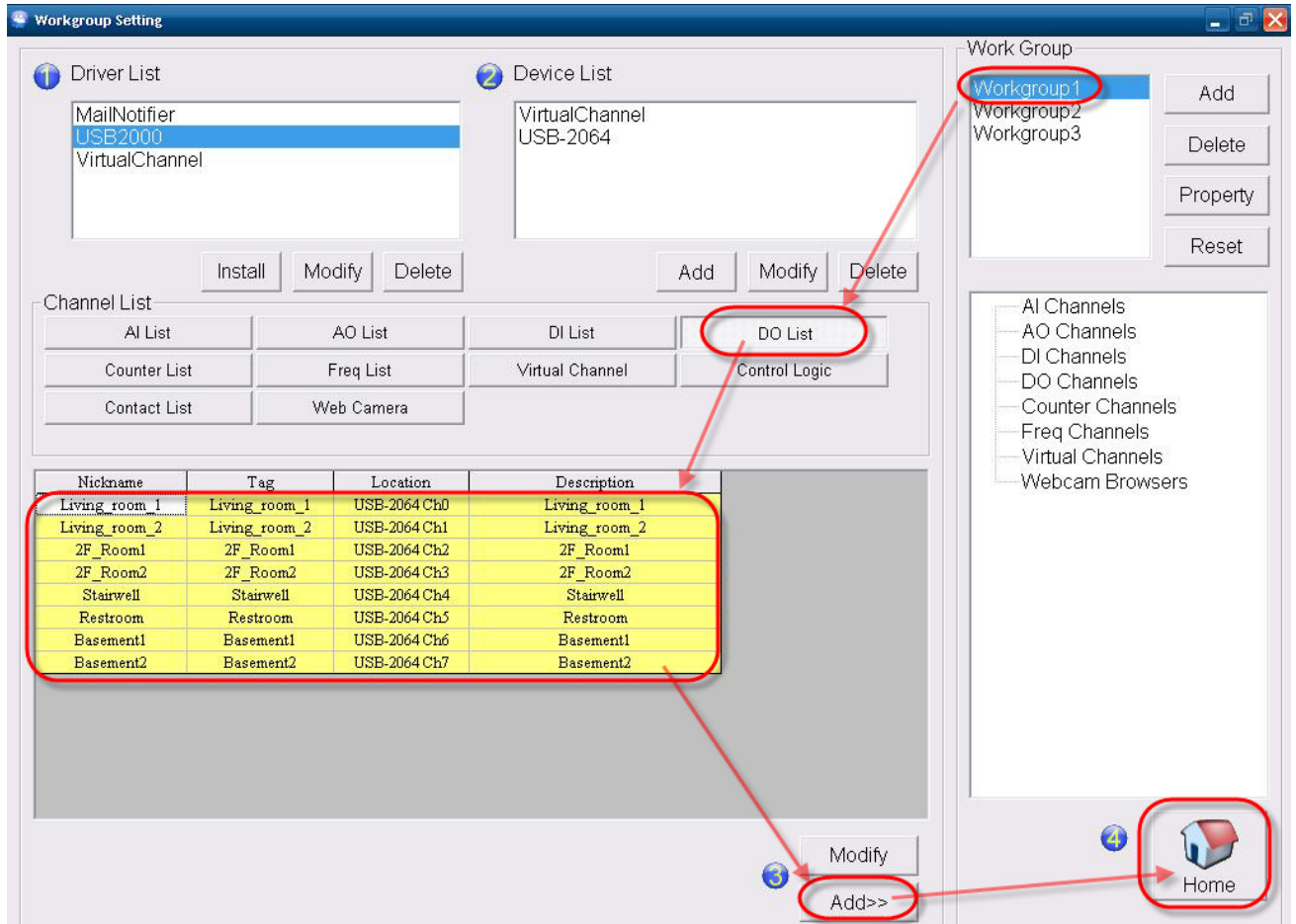
Channel List

AI List	AO List	DI List	DO List
Counter List	Freq List	Virtual Channel	Control Logic
Contact List	Web Camera		

Nickname	Tag	Location	Description
Living_room_1	Living_room_1	USB-2064 Ch0	Living_room_1
Living_room_2	Living_room_2	USB-2064 Ch1	Living_room_2
2F_Room1	2F_Room1	USB-2064 Ch2	2F_Room1
2F_Room2	2F_Room2	USB-2064 Ch3	2F_Room2
Stairwell	Stairwell	USB-2064 Ch4	Stairwell
Restroom	Restroom	USB-2064 Ch5	Restroom
Basement1	Basement1	USB-2064 Ch6	Basement1
Basement2	Basement2	USB-2064 Ch7	Basement2

Classification	Solution FAQ on EZ Data Logger				No.	4-015-02	
Author	Amber	Version	1.0.0	Date	2013/01/29	Page	6/7

Step8 : In the “Workgroup Setting” form, select the DO channels that have been set→ Click the **Add>>** button to add them into **Workgroup1** and then click the **Home** button.



Step9 : From the button list click the **Start** button to execute your project.



Classification	Solution FAQ on EZ Data Logger				No.	4-015-02	
Author	Amber	Version	1.0.0	Date	2013/01/29	Page	7/7

Step10 : Click **Layout** of “Workgroup1”, and you can see the screen as shown below ↓

