



EzCheck Vision Library

Quick Start

Sep. 2011 Version 1.0

Using EzCheck Vision Library

This document will guide users to install and use the EzCheck Vision Library step by step. The EzCheck Vision Library contains EzCheck Utility, EzCheck Vision Library User Manual, and all of the necessary files to develop projects in both “Borland C++ Builder” and “Visual C++”.

1. Install EzCheck Vision Library

Users can get the EzCheck Vision Library installation file from CD-ROM or web page:

EzCheck_Install_v*.*.exe (“v*.*” refers to the version number of EzCheck).

Web page link :

http://www.icpdas.com.tw/product/solutions/software/development_tools/ezcheck/ezcheck_introduction.html

Download link :

<http://ftp.icpdas.com/pub/cd/EzCheck/>

The status of executing the installer :

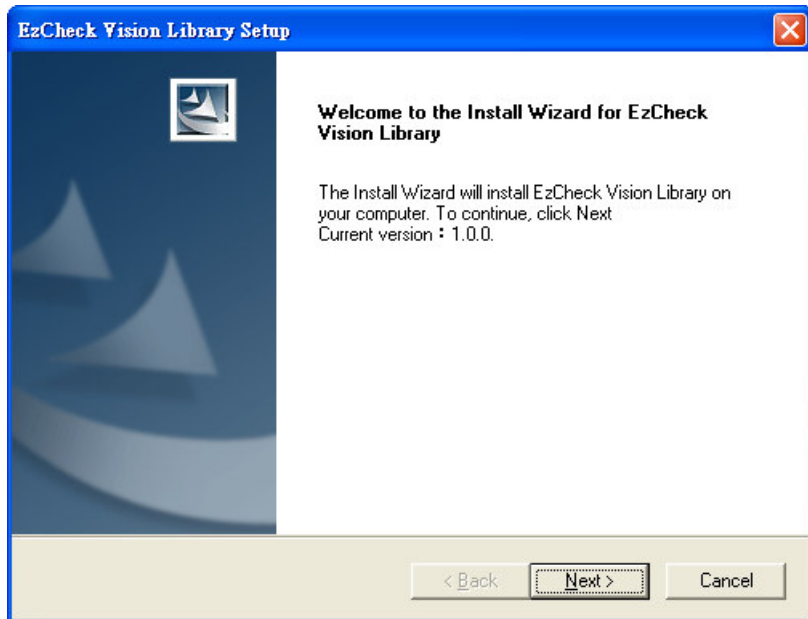


Figure 1. The EzCheck installation welcome screen. The current version is 1.0.0 as shown in the screen.

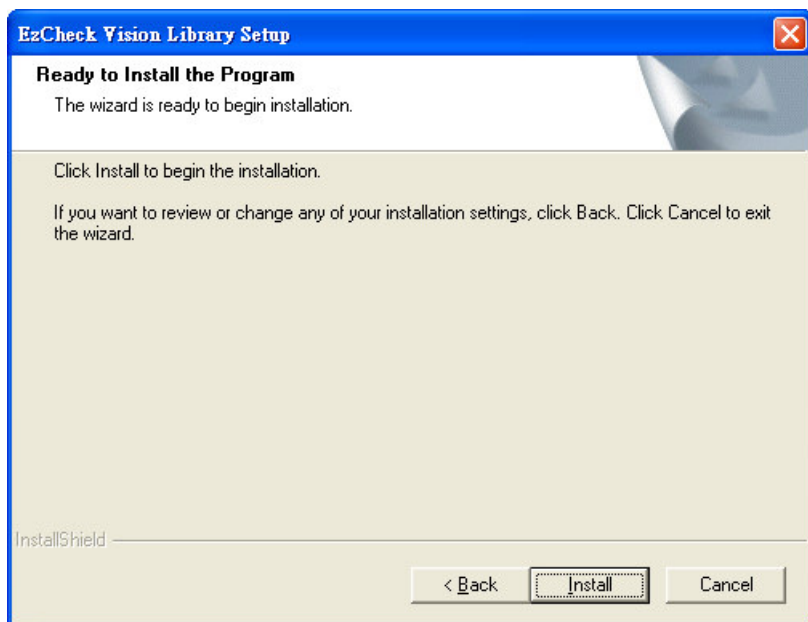


Figure 2. Confirm the EzCheck installation to the computer.

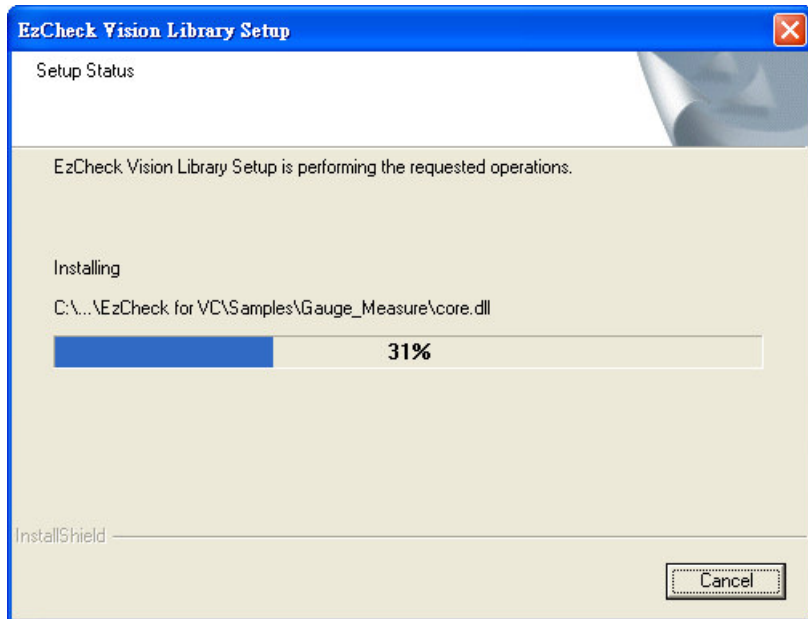


Figure 3. The installer is copying the files of EzCheck into the computer. The default path is “C:\ICPDAS\EzCheck Vision Library”.

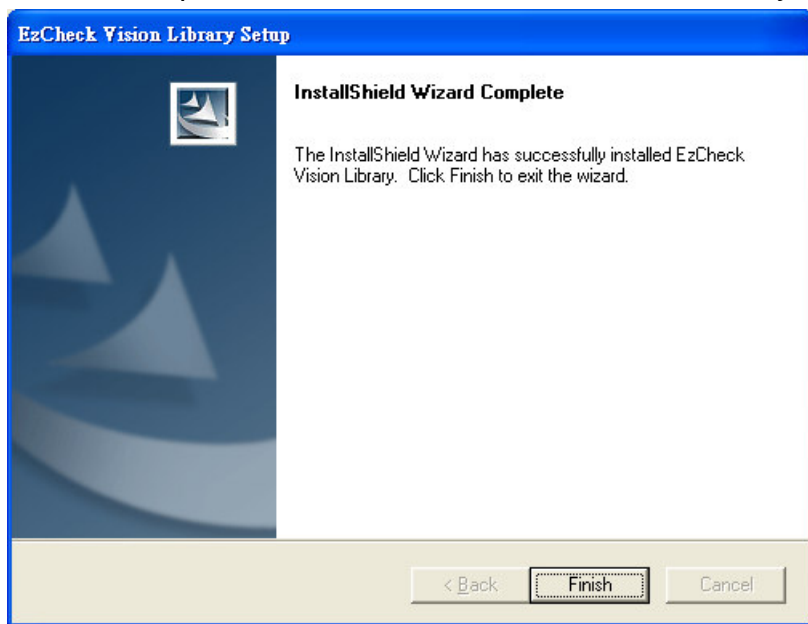


Figure 4. The EzCheck has successfully installed.

After installation, users can find all the associated files of EzCheck Vision Library in the folder “C:\ICPDAS\EzCheck Vision Library”.

Folder contents:

➤ EzCheck for BCB ◦

This folder includes the associated files of EzCheck Vision Library to develop projects in Borland C++ Builder 6.0.

- ✧ Libs : The lib files for project development.
- ✧ DLLs : The dll files for project executing.

- ✧ Includes : The header files for project development.
- ✧ Sample : The sample programs of BCB.
- EzCheck for VC
 - This folder includes the associated files of EzCheck Vision Library to develop projects in Visual C++ 6.0.
 - ✧ Libs : The lib files for project development.
 - ✧ DLLs : The dll files for project executing.
 - ✧ Includes : The header files for project development.
 - ✧ Sample : The sample programs of VC.
- EzCheck Document
 - This folder includes this Quick Start and the user manual.
- EzCheck Utility
 - This folder includes the associated files of EzCheck Utility.

2. Using EzCheck Vision Library in Borland C++ Builder 6.0

This chapter will guide users to setup the development environment in Borland C++ Builder 6.0 for EzCheck Vision Library application.

- (1) Open a new project.
- (2) Set the including file paths.

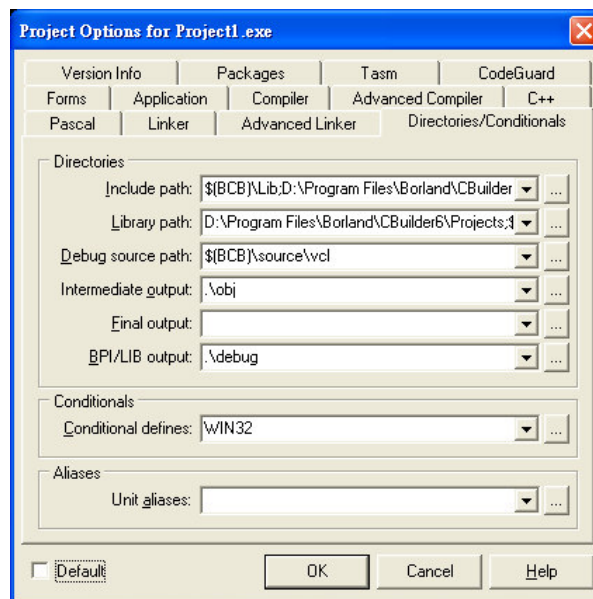


Figure 5. The interface for path setting in BCB.

- Set the including path of header files.

Project->Options->Directories/Conditionals->Include path ◦ Add
“C:\ICPDAS\EzCheck Vision Library\EzCheck for BCB\Includes” path into
Include paths.

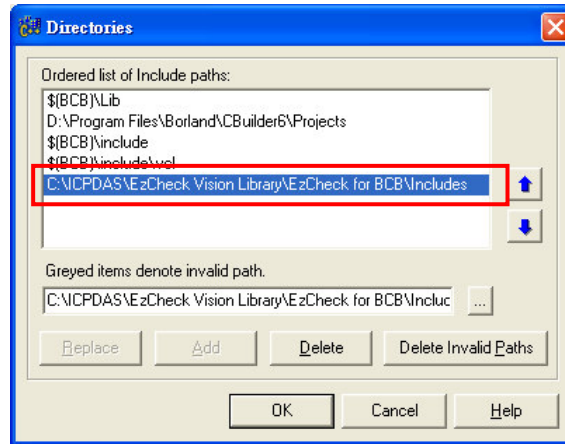


Figure 6. Add the path for BCB header files.

- Set the including path of lib files.

Project->Options->Directories/Conditionals->Library path ◦ Add
“C:\ICPDAS\EzCheck Vision Library\EzCheck for BCB\Libs” path into
Library paths.

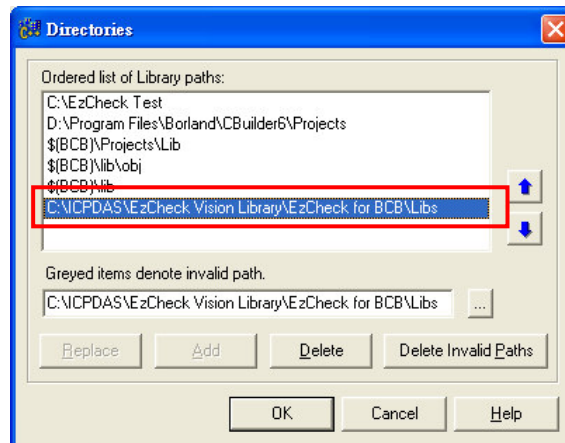


Figure 7. Add the including path of BCB lib files.

- (3) Add the lib files into the project.

Project->Add to Project ◦ Add four lib files in “C:\ICPDAS\EzCheck Vision
Library\EzCheck for BCB\Libs” folder into the project.

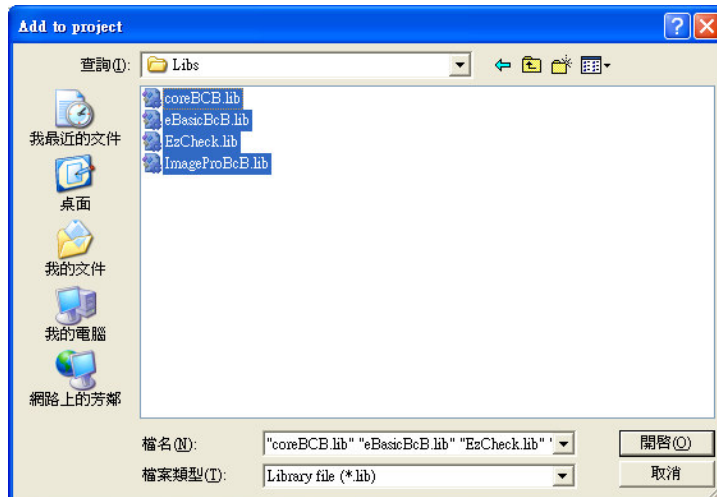


Figure 8. Add the lib files of BCB into project.

- (4) Add “#include “EzCheck_Func.h”” in the project source code.

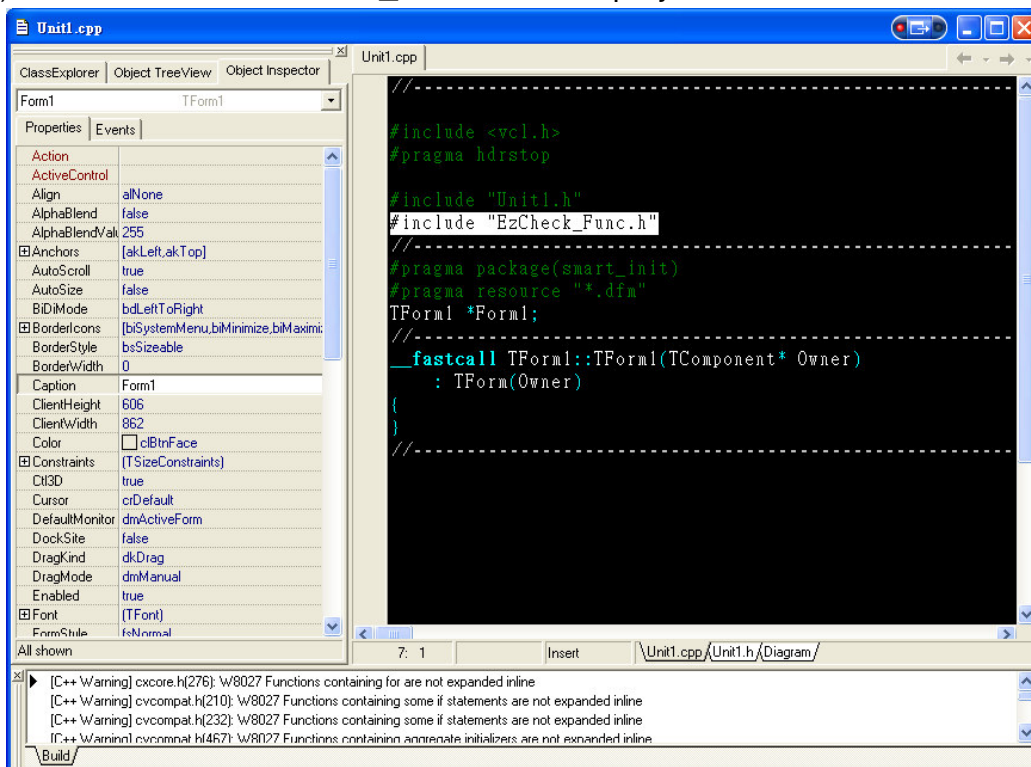


Figure 9. Include EzCheck_Func.h to link all functions of EzCheck Vision Library.

- (5) Copy six dll files in the “C:\ICPDAS\EzCheck Vision Library\EzCheck for BCB\Dlls” folder to the project executable file folder.

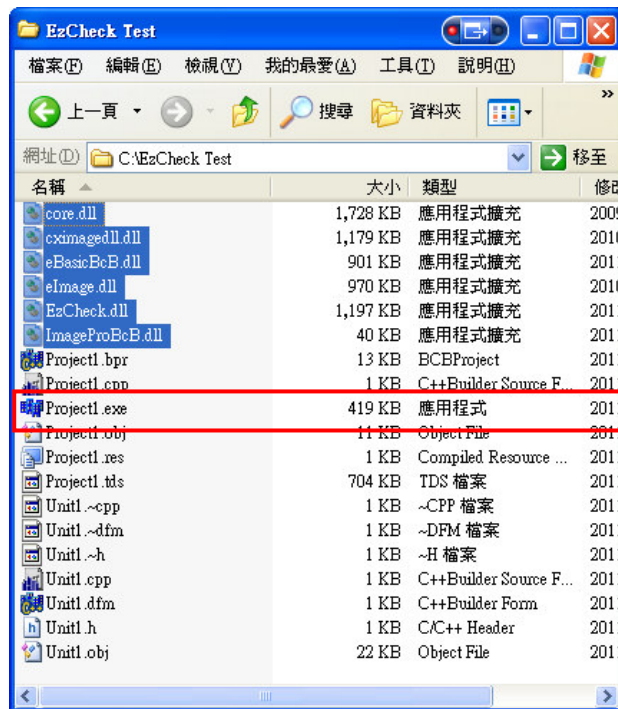


Figure 10. Put the six dll files and executable file in the same folder

(6) Using the EzCheck Vision Library to develop the machine vision system

3. Using EzCheck Vision Library in Visual C++ 6.0

This chapter will guide users to setup the development environment in Visual C++ 6.0 for EzCheck Vision Library application.

(1) Open a new project.

(2) Set the including file paths.

➤ Set the including path of header files.

Tools->Options->Directories->Include files ◦ Add "C:\ICPDAS\EzCheck Vision Library\EzCheck for VC\Includes" path into "Directories" of Include files.

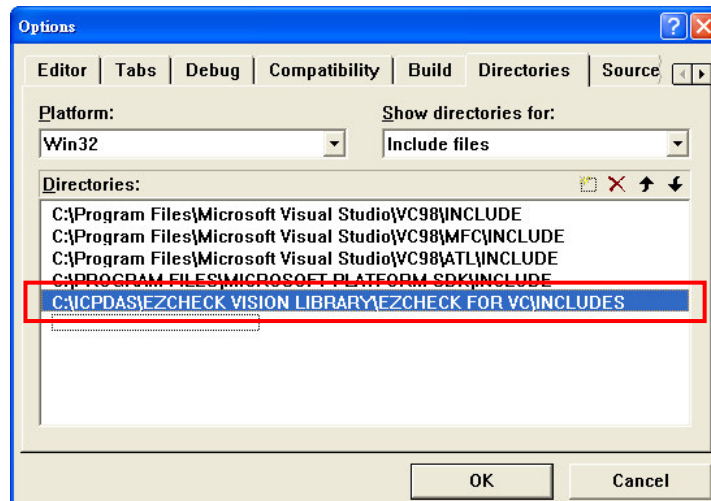


Figure 11. Add the including path into “Directories” of Include files.

➤ Set the including path of lib files.

Tools->Options->Directories ->Library files ◦ Add “C:\ICPDAS\EzCheck Vision Library\EzCheck for VC\Libs” path into “Directories” of Library files ◦

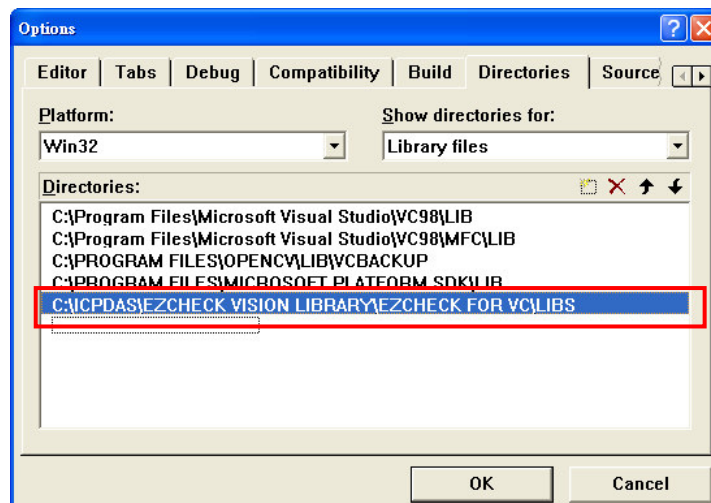


Figure 12. Add the including path into “Directories” of Library files.

(3) Add the lib files into the project.

Project->Setting->Link->Object/library modules ◦ Add five lib files under “C:\ICPDAS\EzCheck Vision Library\EzCheck for VC\Libs” folder into the project.

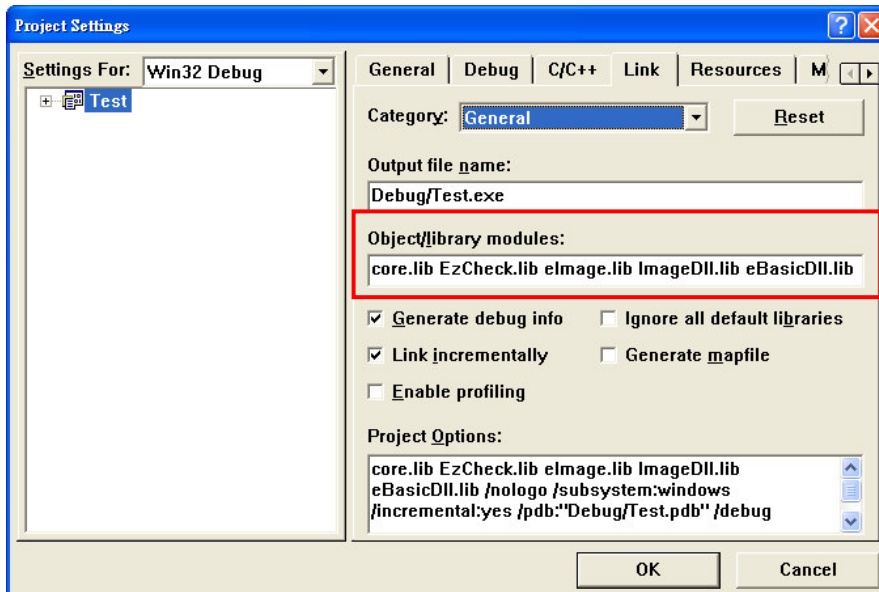


Figure 13. Enter the lib's file names into the project.

- (4) Add "#include "EzCheck_Func.h"" in the project source code.

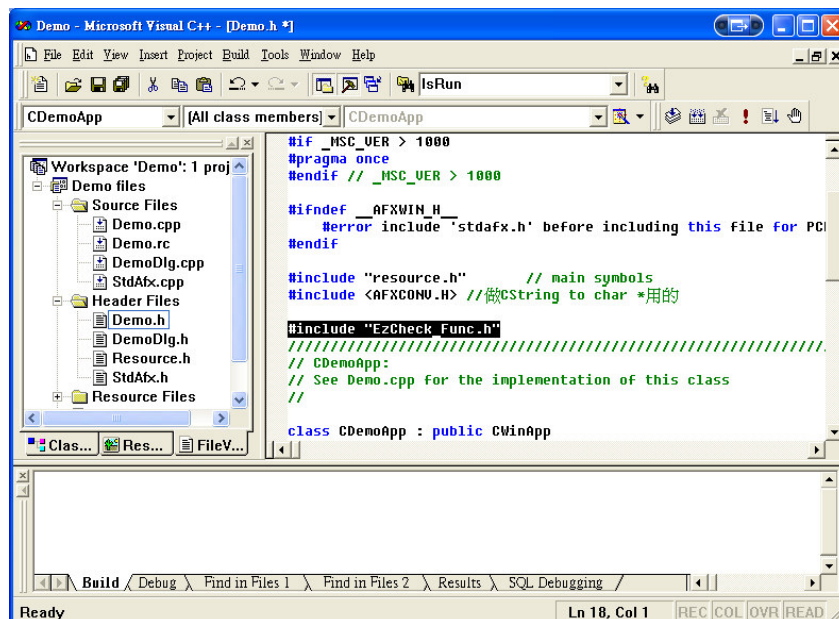


Figure 14. Include EzCheck_Func.h to link all functions of EzCheck Vision Library.

- (5) Copy six dll files in the "C:\ICPDAS\EzCheck Vision Library\EzCheck for BCB\Dlls" folder to the project executable file folder.

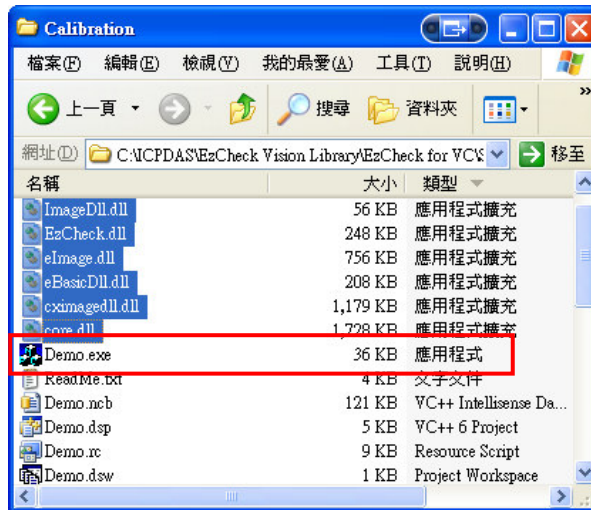


Figure 15. Put the six dll files and executable file in the same folder

(6) Using the EzCheck Vision Library to develop the machine vision system