

# Software Guide

## ICPView

---

( version 1.0 )

2012/08

### Warranty

All products manufactured by ICP DAS Inc. are warranted against defective materials for a period of one year from the date of delivery to the original purchaser.

### Warning

ICP DAS Inc. assume no liability for damages consequent to the use of this product. ICP DAS Inc. reserves the right to change this manual at any time without notice. The information furnished by ICP DAS Inc. is believed to be accurate and reliable. However, no responsibility is assumed by ICP DAS Co., Ltd. for its use, nor for any infringements of patents or other rights of third parties resulting from its use.

### Copyright

Copyright @ 2012 by ICP DAS Co., Ltd. All rights are reserved.

### Trademark

The names used for identification only maybe registered trademarks of their respective companies.

### License

The user can use, modify and backup this software **on a single machine.** The user may not reproduce, transfer or distribute this software, or any copy, in whole or in part.

# Contents

<b>1. Introduction .....</b>	<b>4</b>
<b>2. Installation .....</b>	<b>5</b>
Download .....	5
Install .....	5
1. Double Click the “ICPView_setup.exe” .....	5
2. Click the “Next >” button .....	6
3. Choose the destination folder and click “Install” button to install.....	6
<b>3. Launch the program .....</b>	<b>8</b>
<b>4. Look at the ICPView.....</b>	<b>9</b>
1. Toolbar.....	9
2. Topology Window .....	9
<b>5. Using ICPView .....</b>	<b>10</b>
Search .....	10
1. Click the Search button on the toolbar.....	10
2. Input the search range of the IP address.....	10
3. Click the search button in the dialog box.....	10
4. Start to search switches .....	10
Save to project.....	12
1. Click the Save button on the toolbar .....	12
2. Choose the destination to save the project file.....	12
3. Click Save button on the dialog.....	12
Export topology to PNG file .....	13
1. Click the “Export to PNG” button on the toolbar.....	13
2. Choose the destination to save the PNG file.....	13
3. Click the Save button on dialog.....	13
Open the exists ICPView Project .....	14
1. Click the “Open” button on the toolbar .....	14
2. Choose the ICPview project file. ....	14
3. Click “Open” button in the dialog box.....	14

4. The topology window shows the project.....15

**6. Uninstall ICPView.....16**

1. Start -> Programs -> ICPDAS -> ICPView -> Uninstall..... 16

2. Click the “Yes” button ..... 16

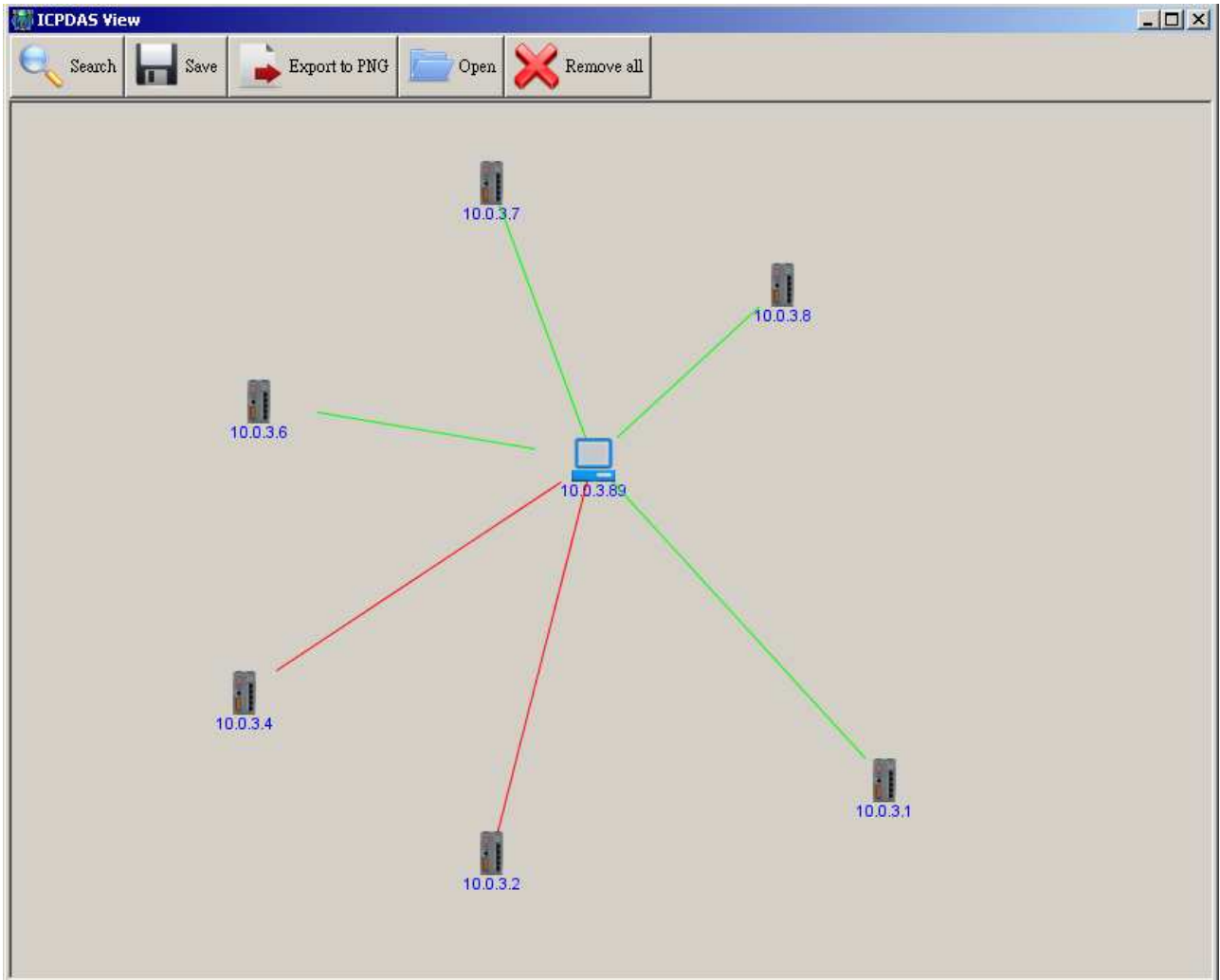
3. Click “OK” ..... 16

---

# 1. Introduction

---

ICPView is a tool to scan and monitor the network status.



---

## 2. Installation

---

### Download

#### Download Java Runtime Environment (JRE)

<http://java.com>

#### Download ICPView

[http://ftp.icpdas.com/pub/cd/ethernetswitch/napdos/icpview/ICPView\\_setup.exe](http://ftp.icpdas.com/pub/cd/ethernetswitch/napdos/icpview/ICPView_setup.exe)

### Install

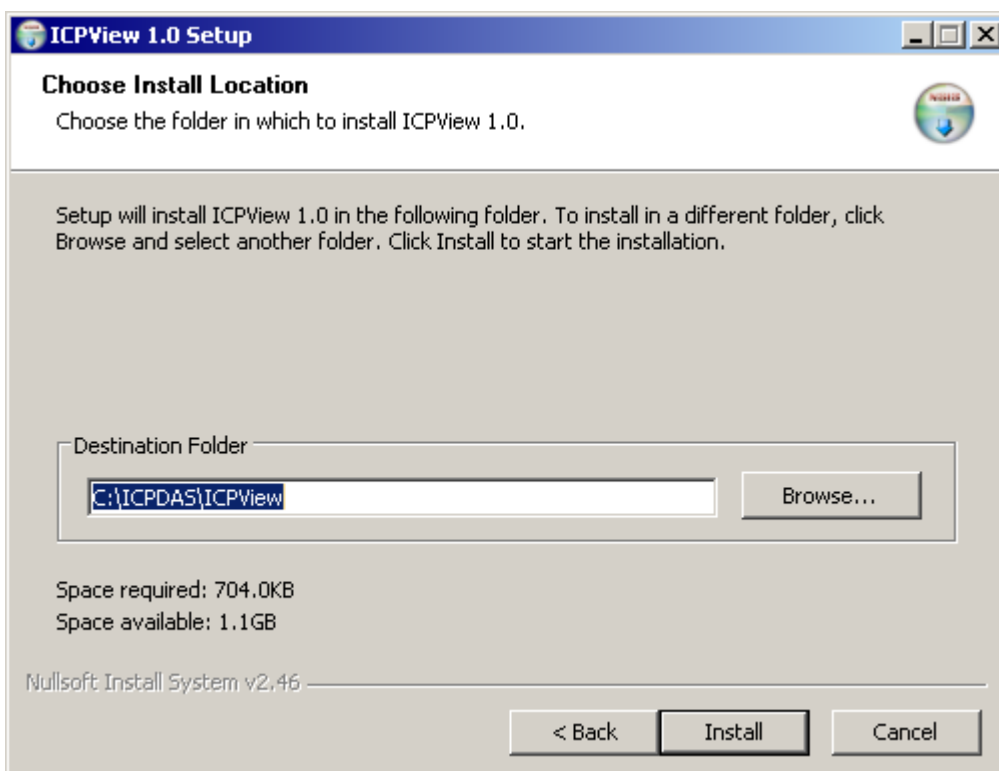
#### 1. Double Click the “ICPView\_setup.exe”

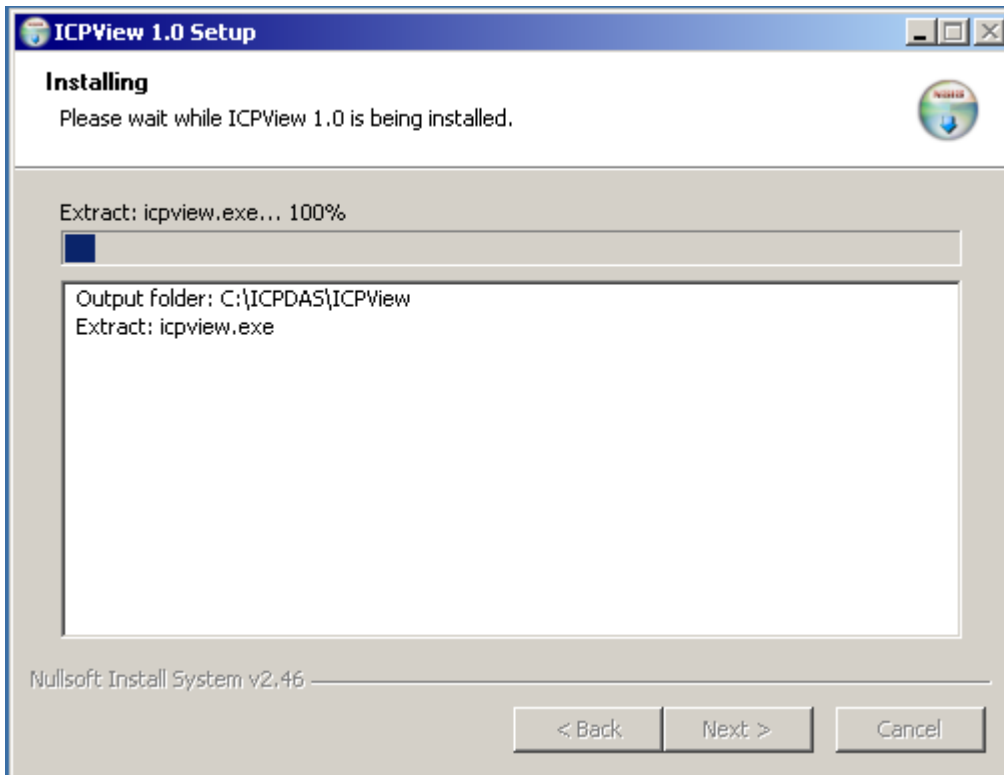


## 2. Click the “Next >” button



## 3. Choose the destination folder and click “Install” button to install



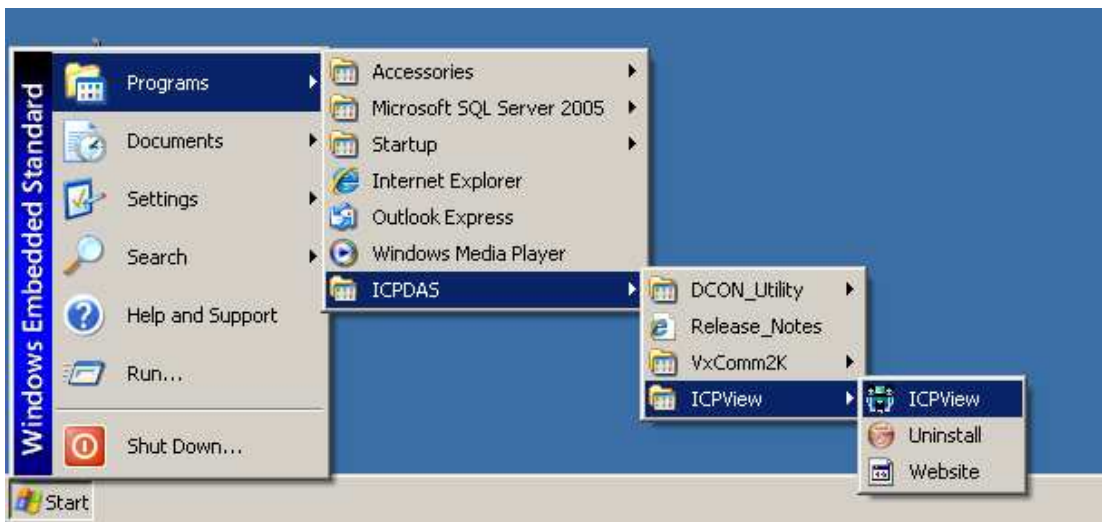
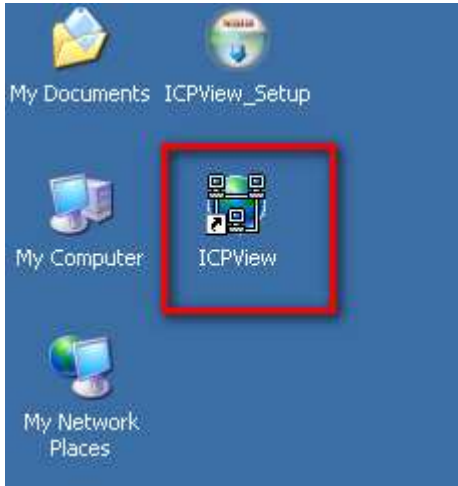


---

### 3. Launch the program

---

You can find the icon of ICPView on the Desktop or start menu.





---

## 4. Look at the ICPView

---

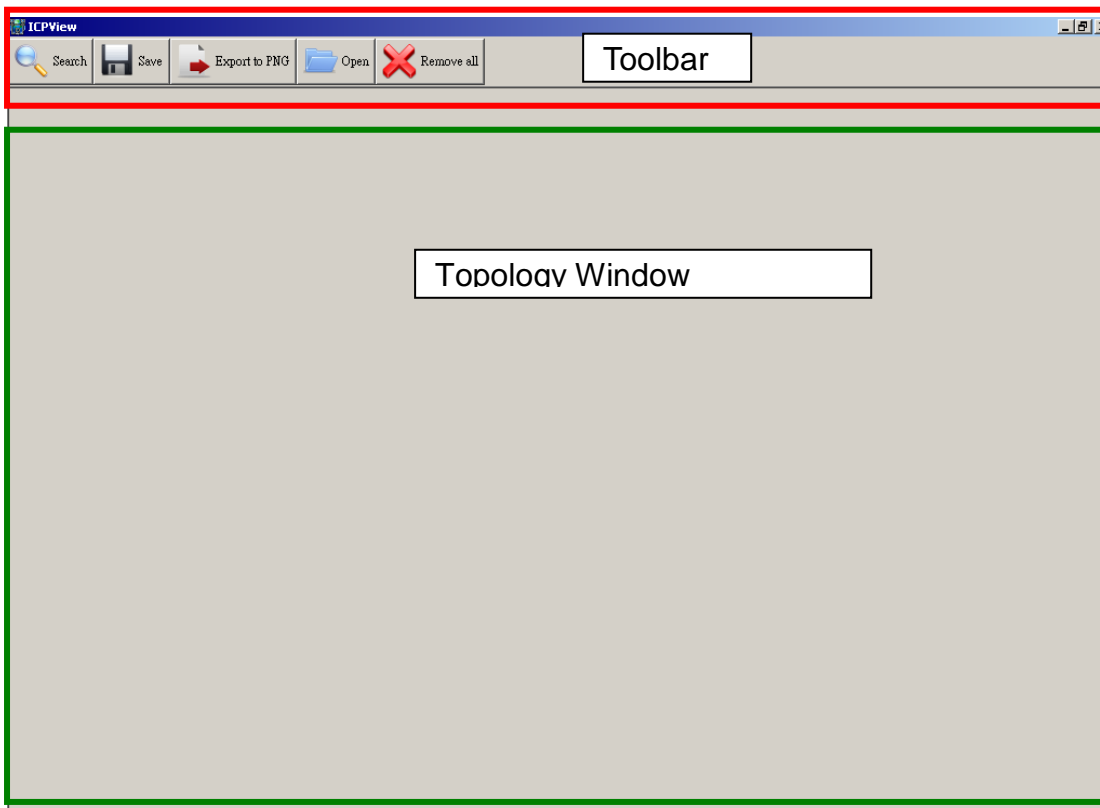
ICPView has two parts toolbar and topology window.

### 1. Toolbar

You can access almost all of ICPView's functionality through toolbar.

### 2. Topology Window

The topology window shows the network topology.



---

## 5. Using ICPView

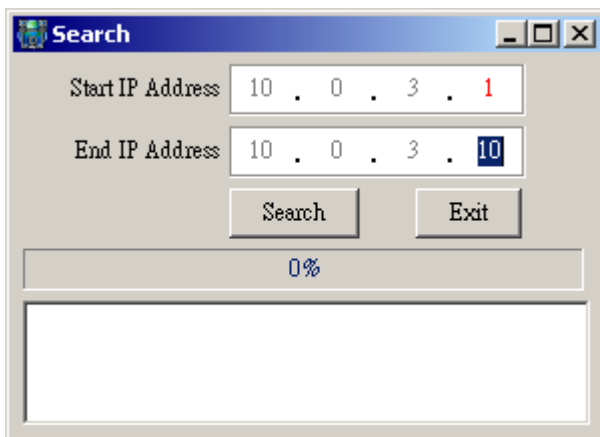
---

### Search

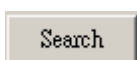
#### 1. Click the Search button on the toolbar



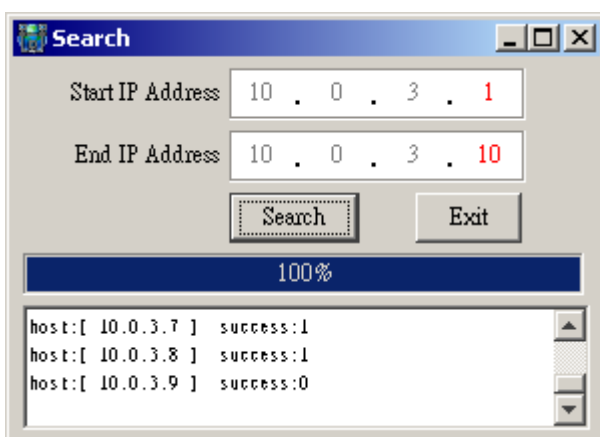
#### 2. Input the search range of the IP address.



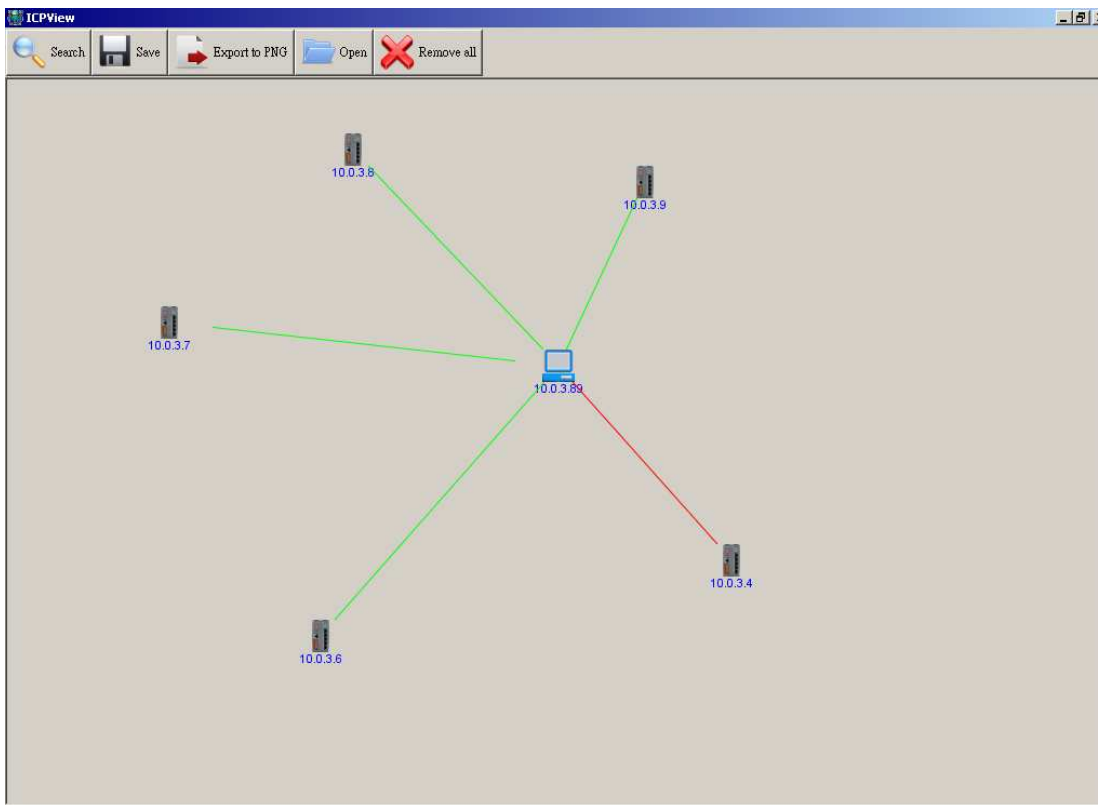
#### 3. Click the search button in the dialog box.



#### 4. Start to search switches



## 5. When scan process complete, the topology windows shows the network topology



Red Line: connection is broken.

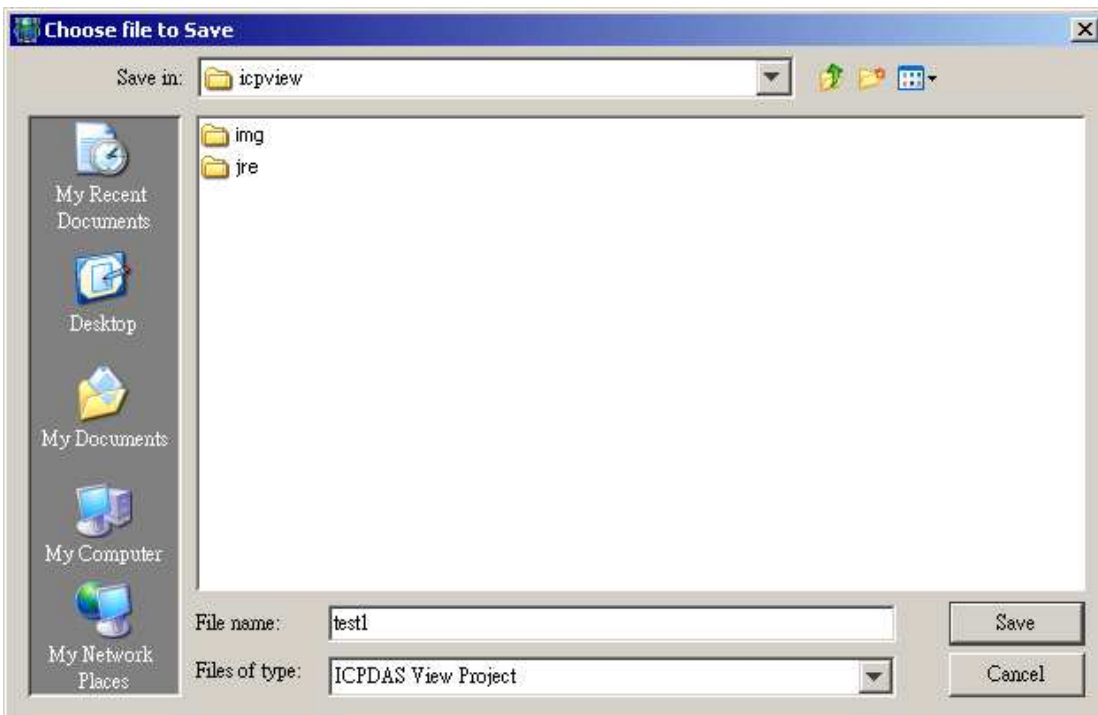
Green Line: connection is good.

# Save to project

1. Click the Save button on the toolbar



2. Choose the destination to save the project file.

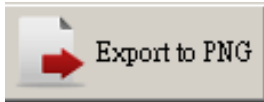


3. Click Save button on the dialog

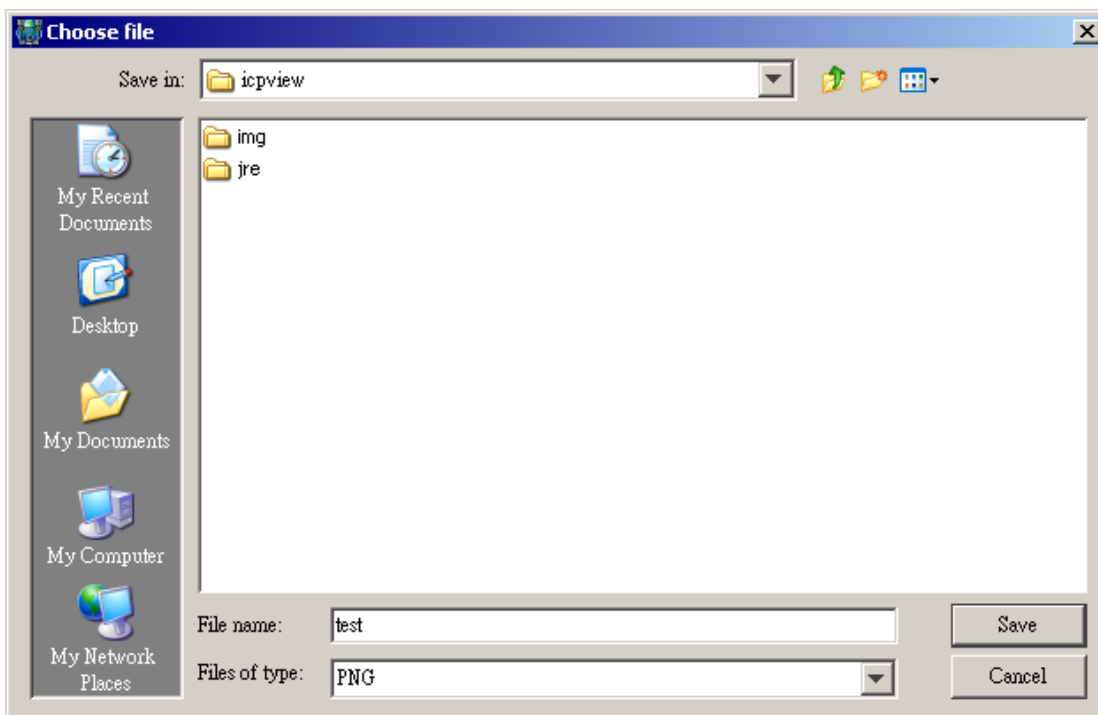


## Export topology to PNG file

1. Click the “Export to PNG” button on the toolbar



2. Choose the destination to save the PNG file.

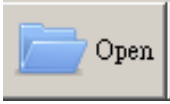


3. Click the Save button on dialog.

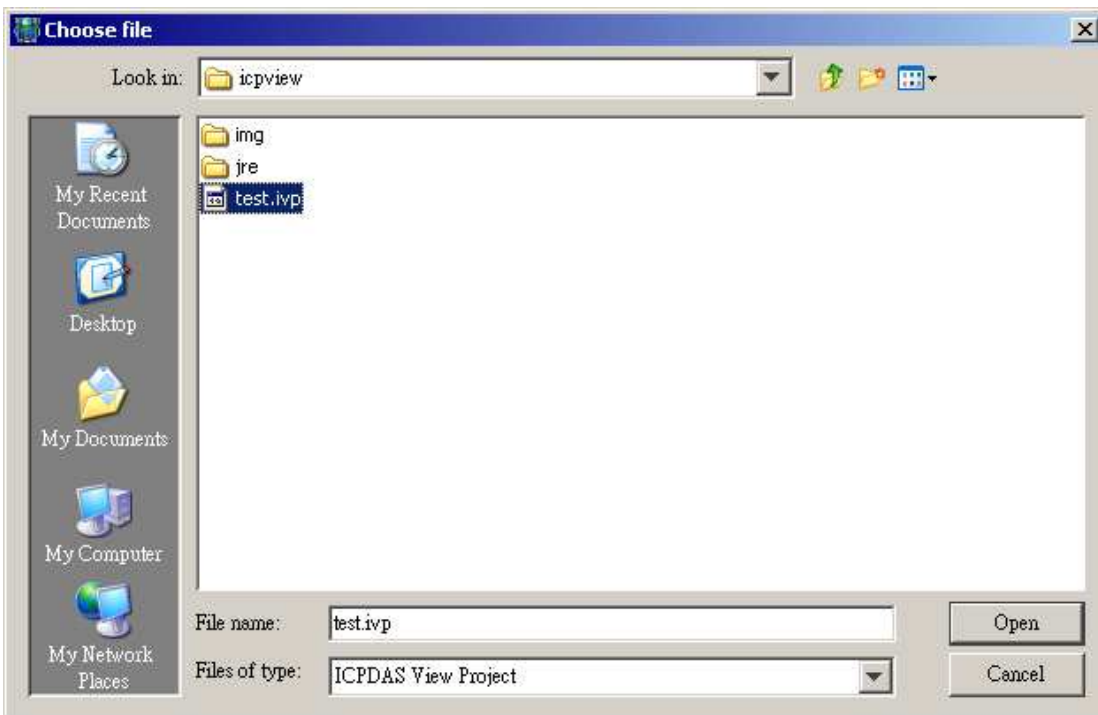


# Open the exists ICPView Project

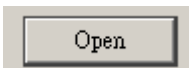
1. Click the “Open” button on the toolbar



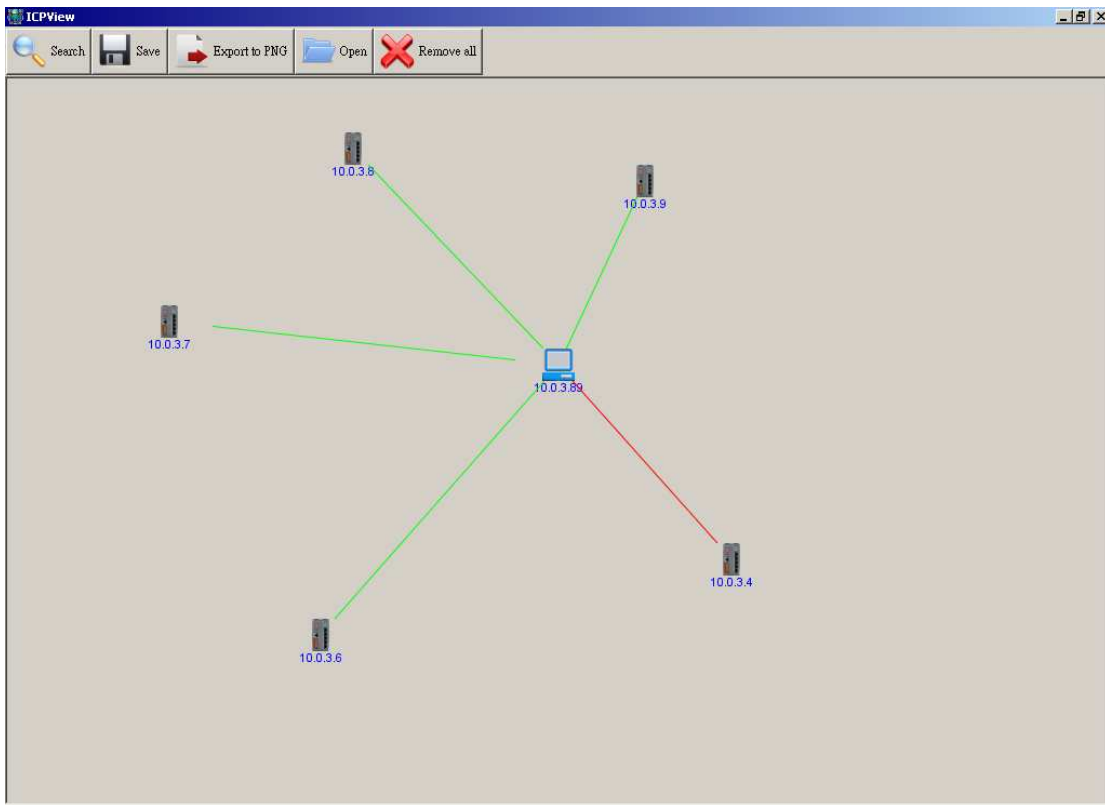
2. Choose the ICPview project file.



3. Click “Open” button in the dialog box.



#### 4. The topology window shows the project.

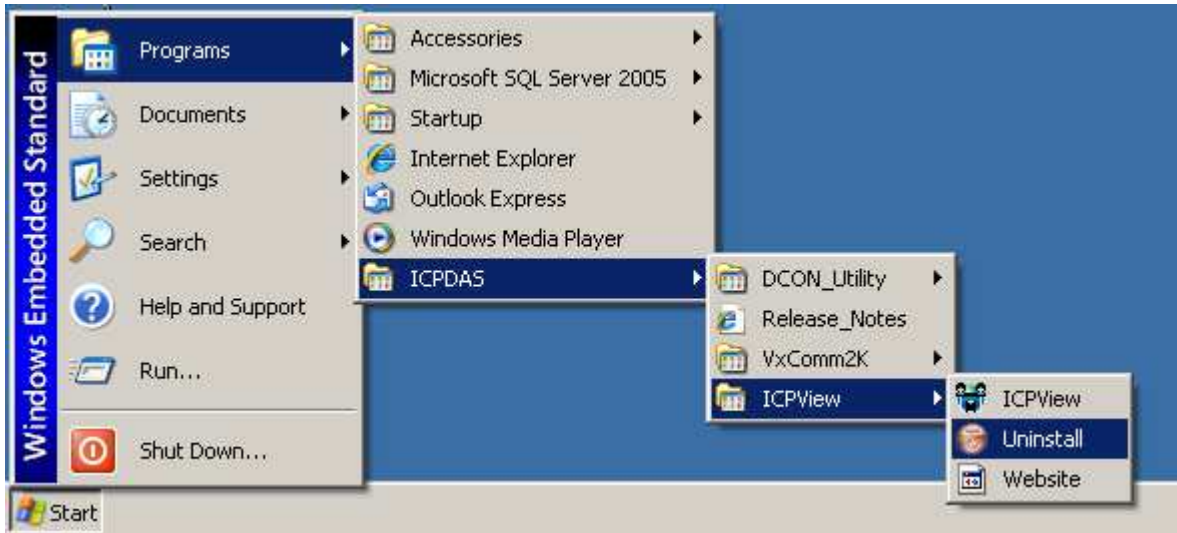


---

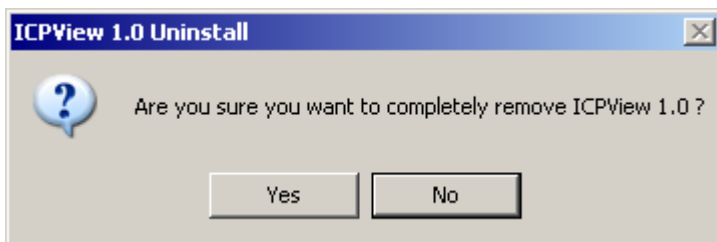
## 6. Uninstall ICPView

---

### 1. Start -> Programs -> ICPDAS -> ICPView -> Uninstall



### 2. Click the “Yes” button



### 3. Click “OK”

