

## Modbus using in LabVIEW

1. Free download NI's Modbus library (for LabVIEW 7.1)

[http://sine.ni.com/apps/we/niepd\\_web\\_display.display\\_epd4?p\\_guid=F1582737BACF5CA8E0340003BA7CCD71](http://sine.ni.com/apps/we/niepd_web_display.display_epd4?p_guid=F1582737BACF5CA8E0340003BA7CCD71)

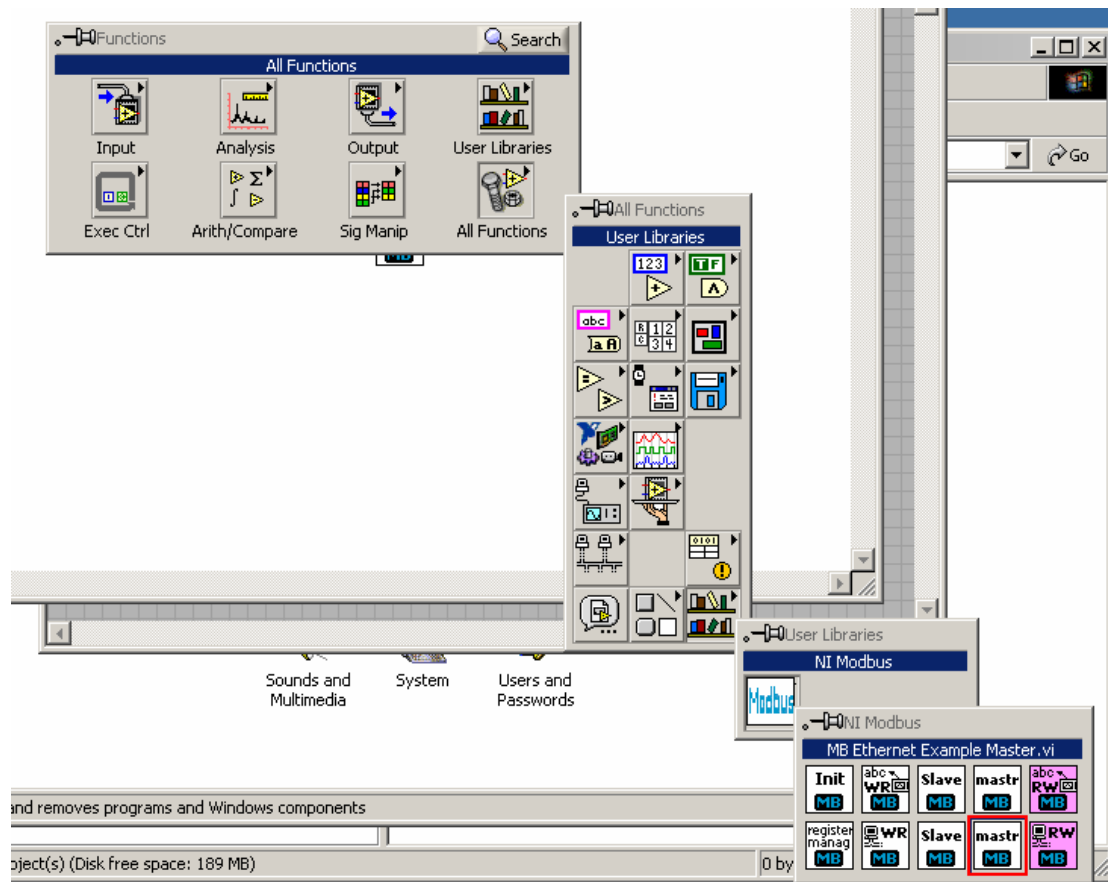
or download the MGIModbus (for LabVIEW 6.1)

[http://sine.ni.com/apps/we/niepd\\_web\\_display.display\\_epd4?p\\_guid=11A73421CA5E4E65E0440003BA230ECF](http://sine.ni.com/apps/we/niepd_web_display.display_epd4?p_guid=11A73421CA5E4E65E0440003BA230ECF)

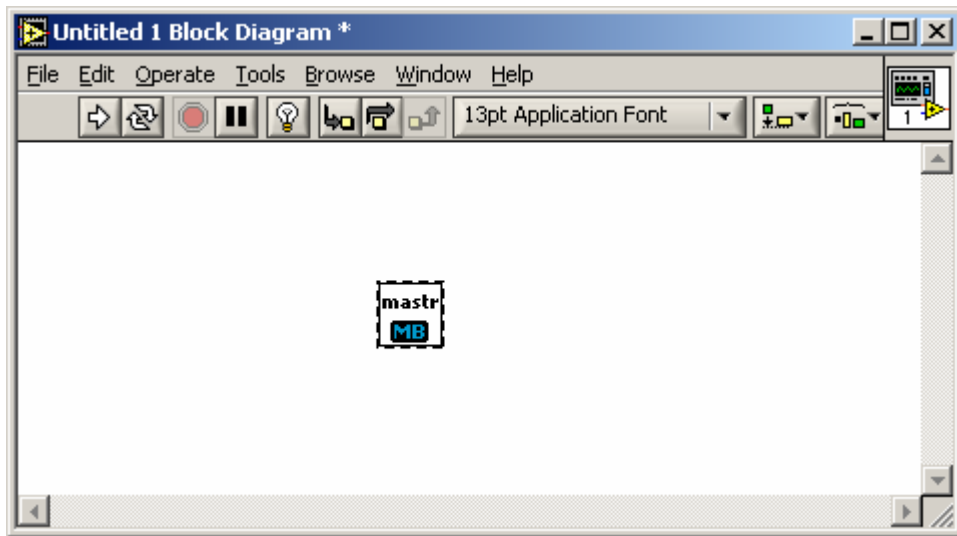
2. Install NI's Modbus library, or unzip MGIModbus and copy the two folders into LabVIEW.

## Modbus/TCP

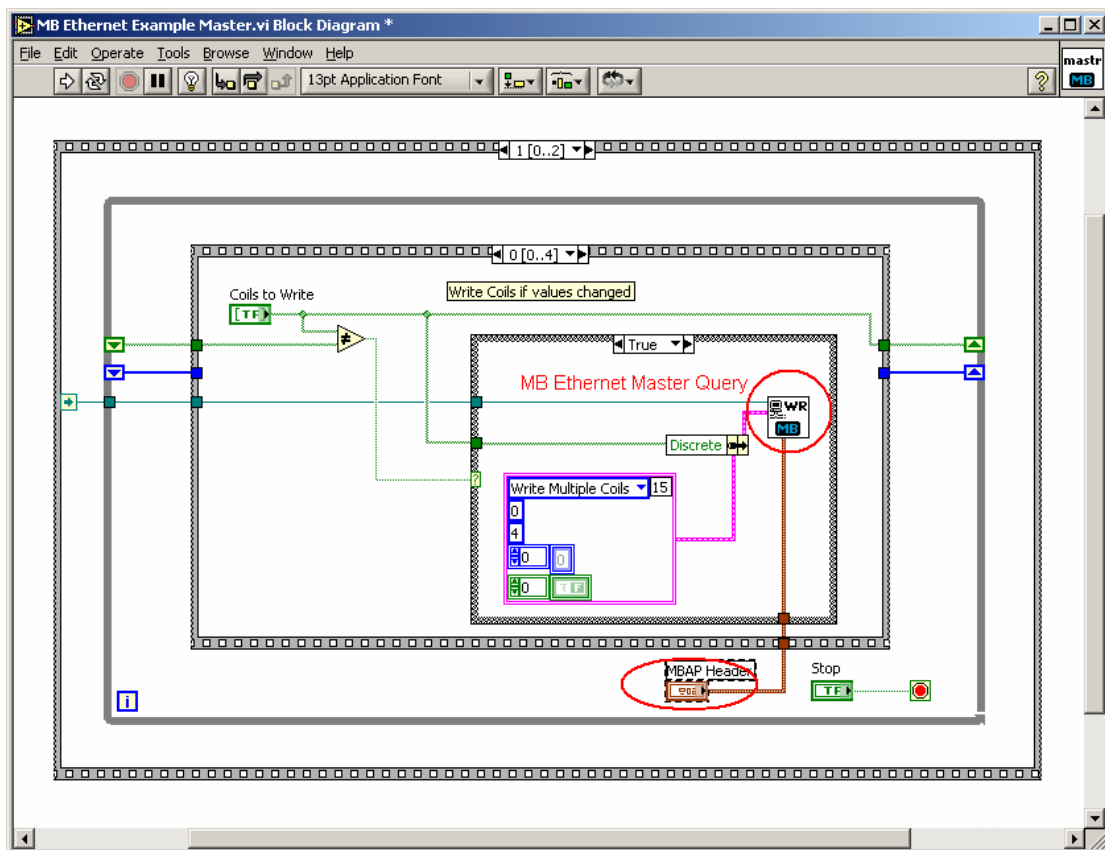
1. Open MB Ethernet Example Master.vi from "Functions Palette" >> "User Libraries">> "NI Modbus">> "MB Ethernet Example Master.vi"



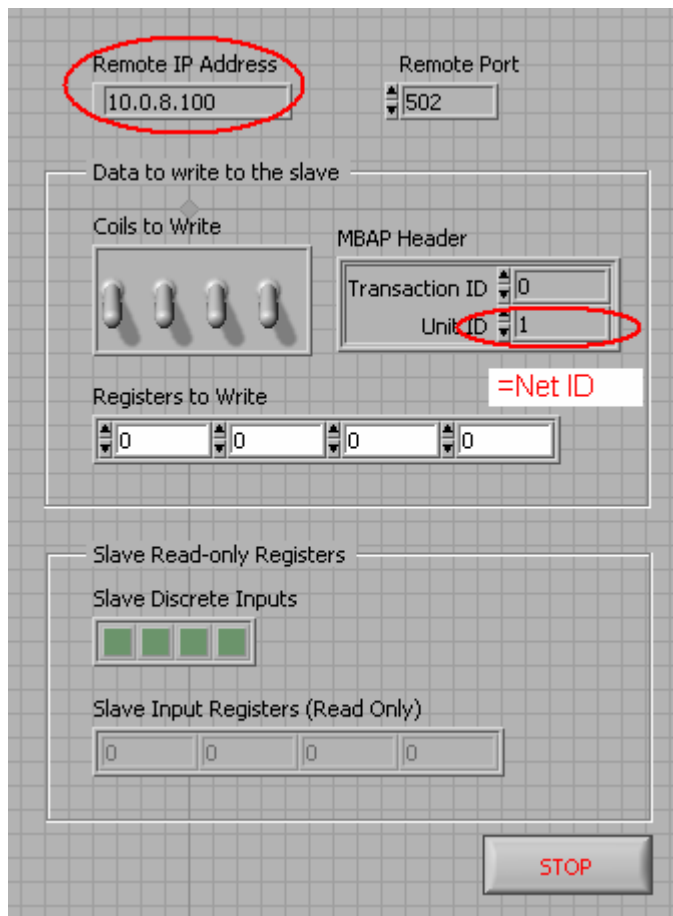
2. Double-click the icon to open it



3. Create MBAP Header of "MB Ethernet Master Query.vi" and link the controller to "MB Ethernet Master Query.vi" in frame0 ~ frame 3



#### 4. Set IP and NetID of remote Modbus slave

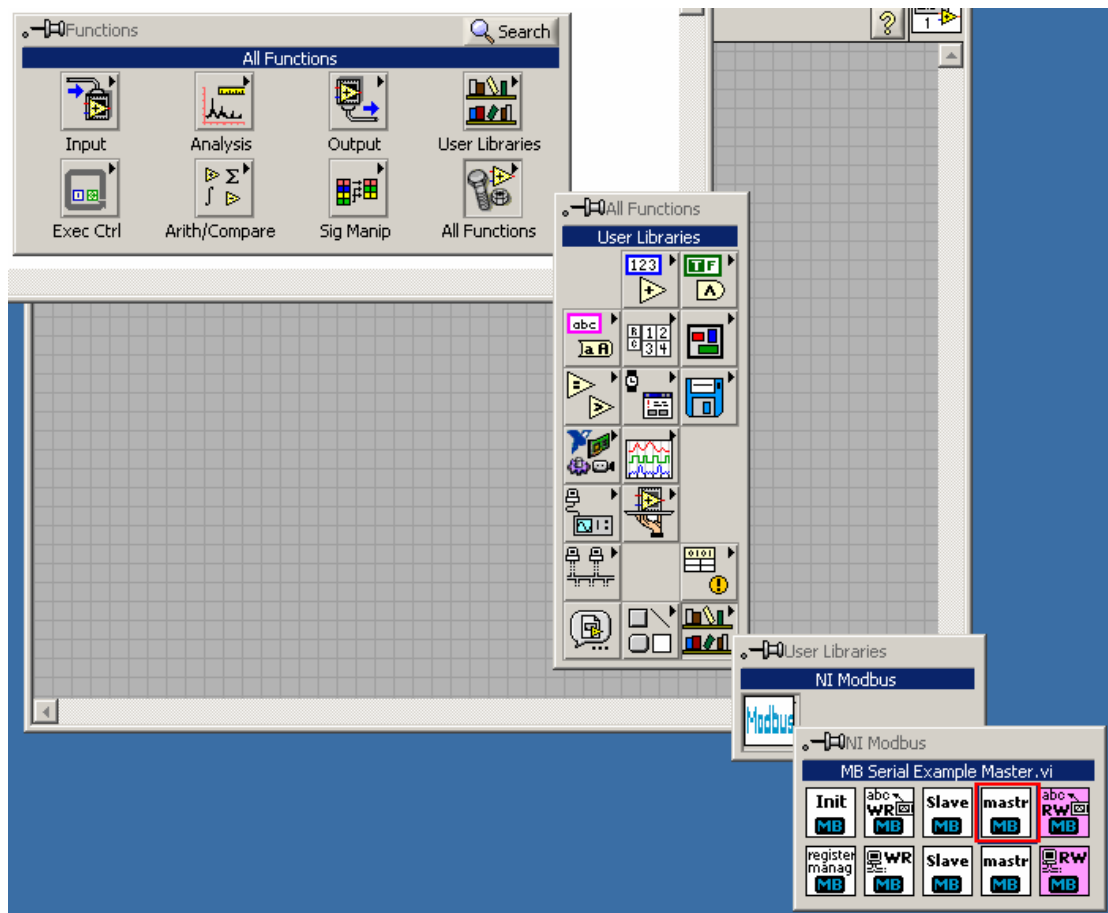


#### 5. Run the VI.

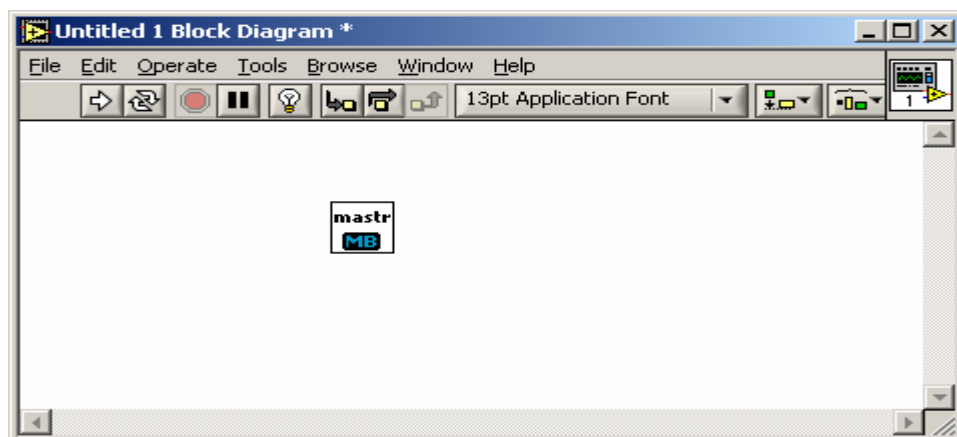
## Modbus/RTU

### 1. Make sure the VISA runtime has been installed.

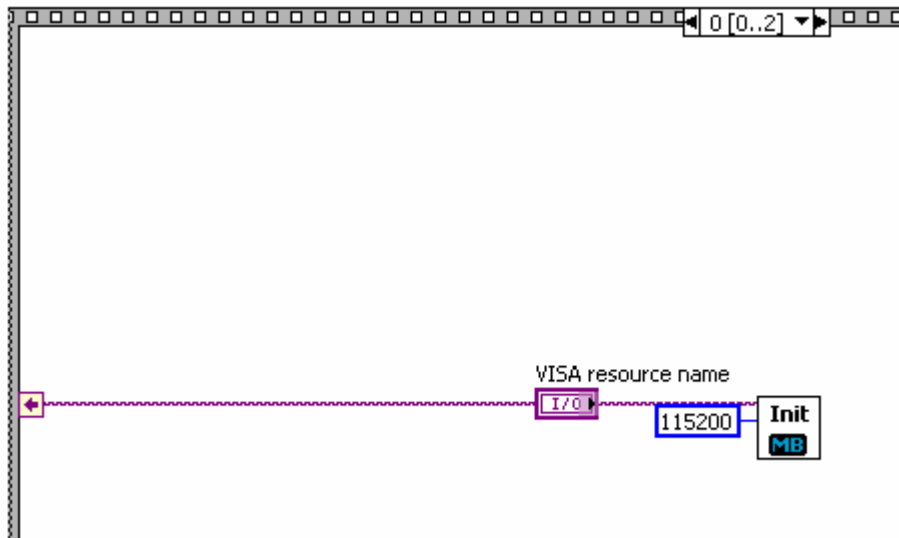
2. Open MB Serial Example Master.vi from “Functions Palette” >> “User Libraries”>> “NI Modbus”>> “MB Serial Example Master.vi”



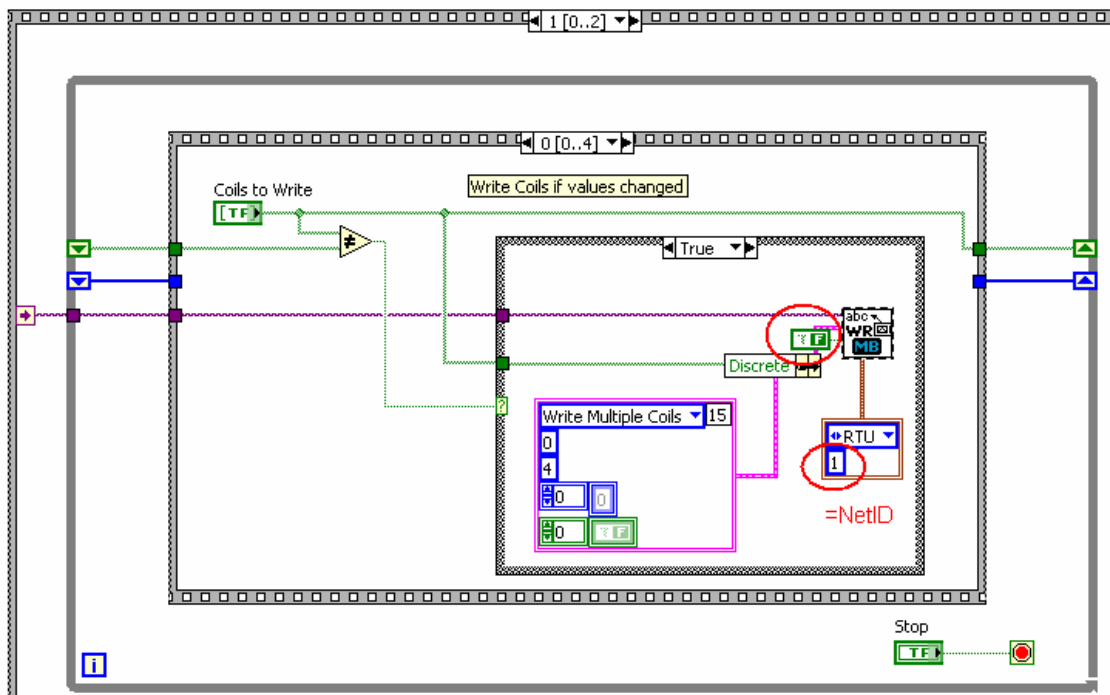
3. Double-click the icon to open it



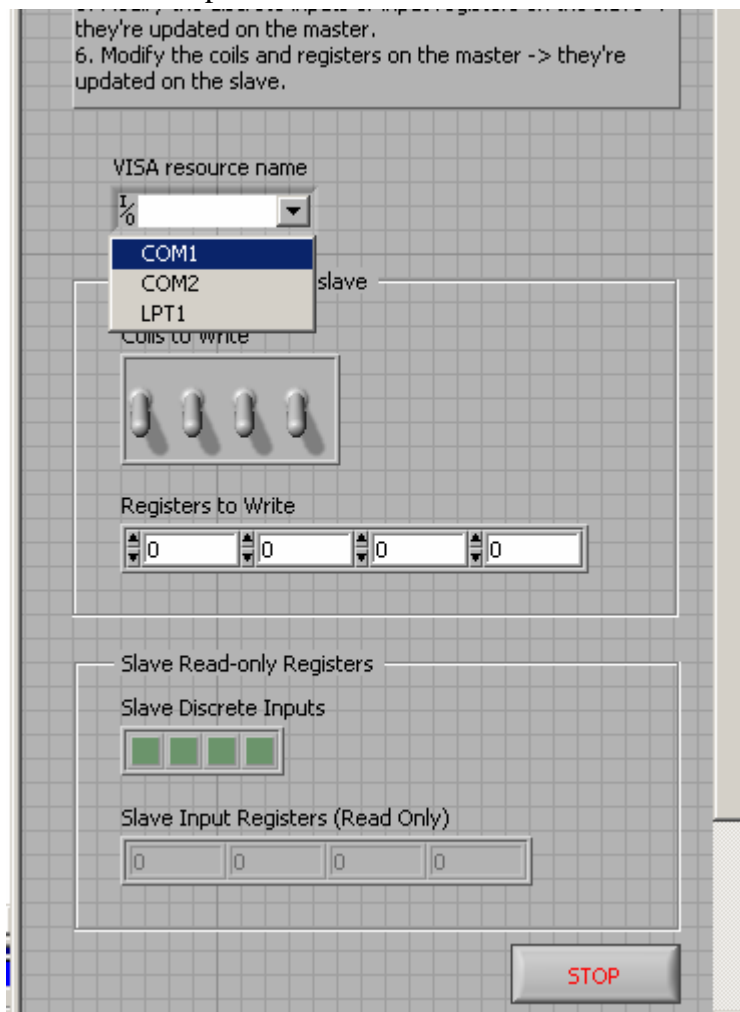
4. Set the baud rate of “MB Serial Init.vi” corresponding with baud rate of Modbus Slave.



5. Modify “MB Serial Example Query.vi” in frame0 ~ frame3:  
Set “False” to “Use Modbus Data Unit?” and “NetID” of Slave to “Slave Address”.



## 6. Select COM port



## 7. Run the VI.