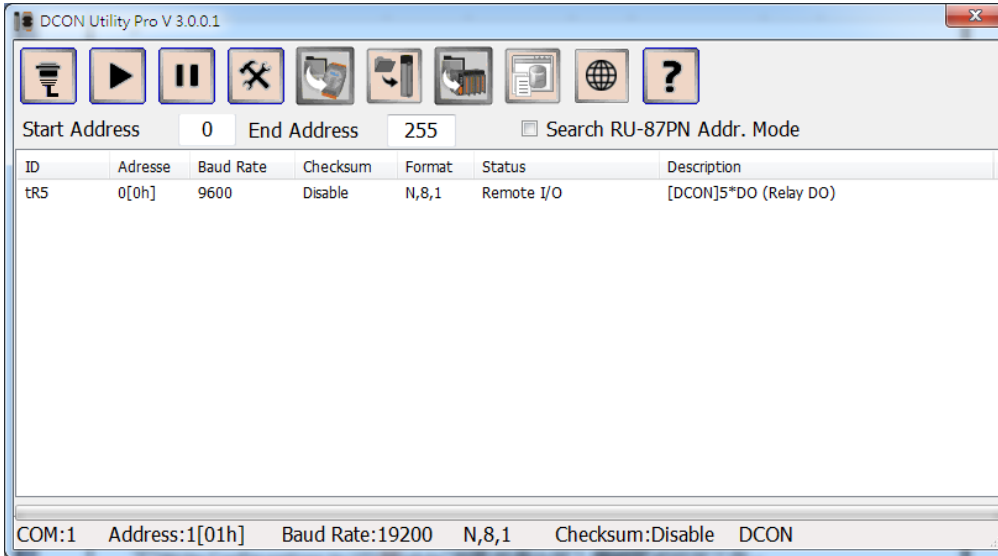


<b>Classification</b>	DCON Utility Pro FAQ				<b>No.</b>	DCON_01_003	
<b>Author</b>	Martin	<b>Version</b>	1.0.0	<b>Date</b>	2019/12/03	<b>Page</b>	1/2

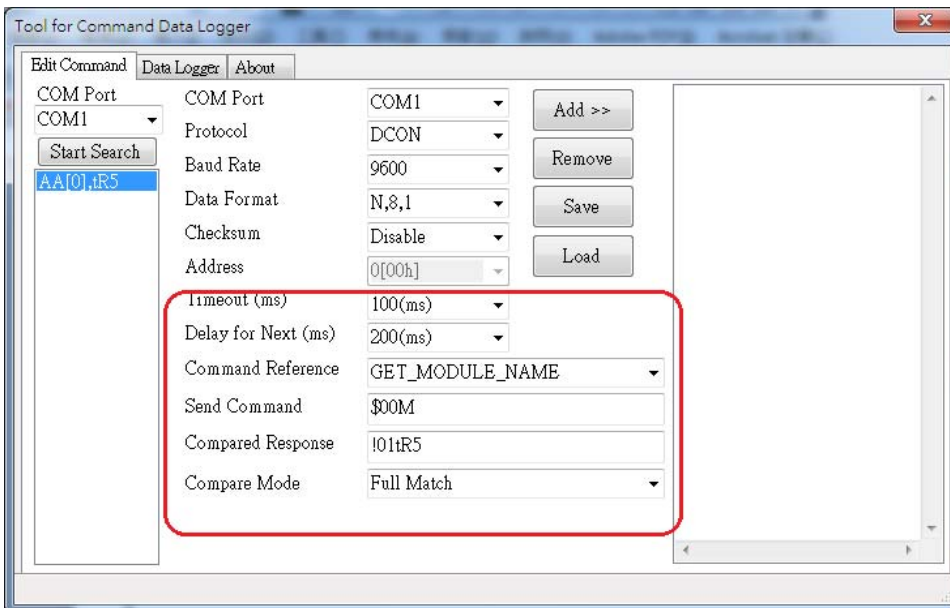
## How to use the DCON Utility Pro Data Logger function?

DCON Utility Pro provides an easy-to-use data logger tool that allows users to save read data to a “\*.csv” format file without writing a program, which is used for subsequent data processing. The operation method is as follows

Step 1: search for modules



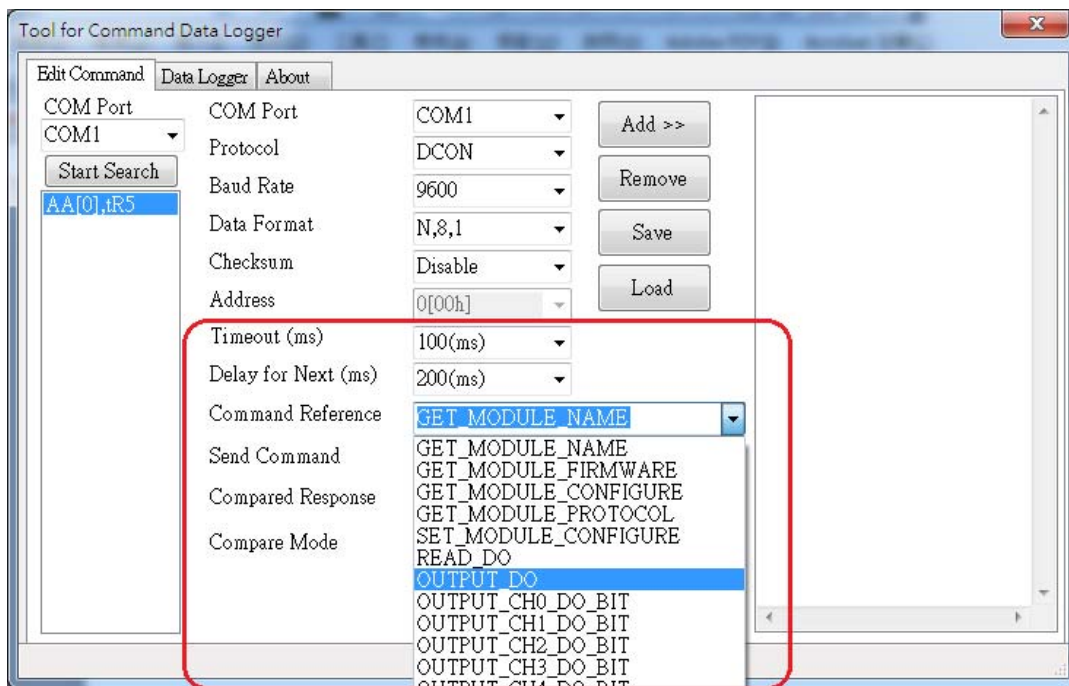
Step 2: Run the Data Logger function, and you will find that the searched modules have appeared in the list. Click the module name, the program will automatically bring in the communication parameters of the search condition and the command to read the module name by default.



<b>Classification</b>	DCON Utility Pro FAQ				<b>No.</b>	DCON_01_003	
<b>Author</b>	Martin	<b>Version</b>	1.0.0	<b>Date</b>	2019/12/03	<b>Page</b>	2/2

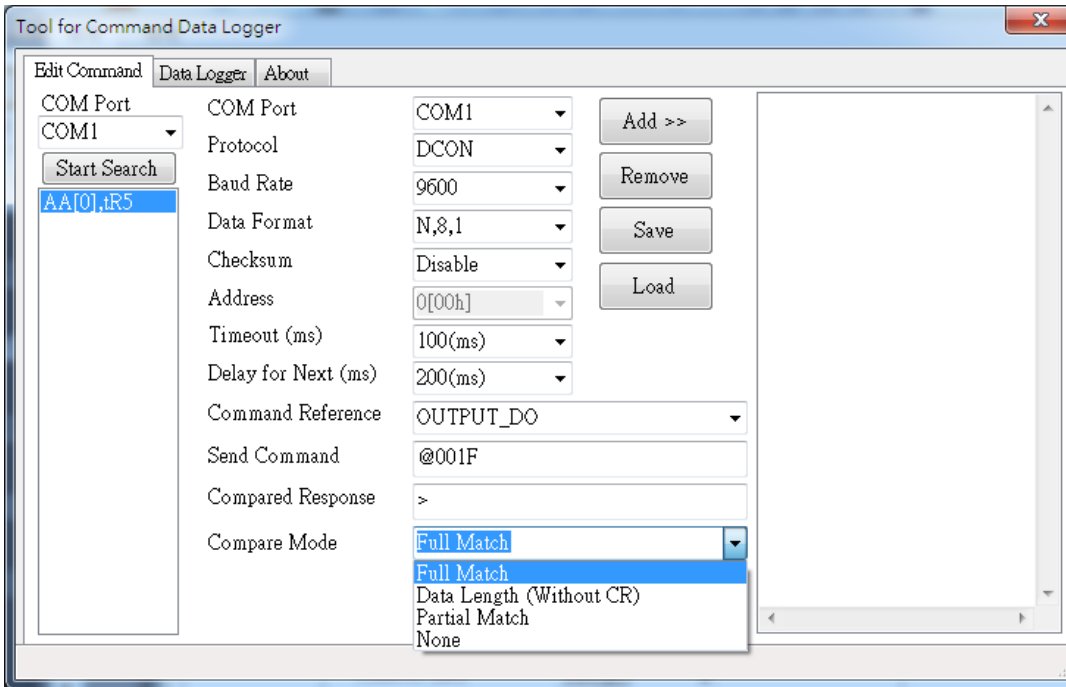
Description of edit items:

1. Timeout (ms): communication timeout setting
2. Delay for Next (ms): How often after sending the command
3. Command Reference: Provides the command used by the selected module, and provides a preset command string based on the command name.
4. Send Command: If the provided command is output or setting command, you can modify the command according to the actual situation.

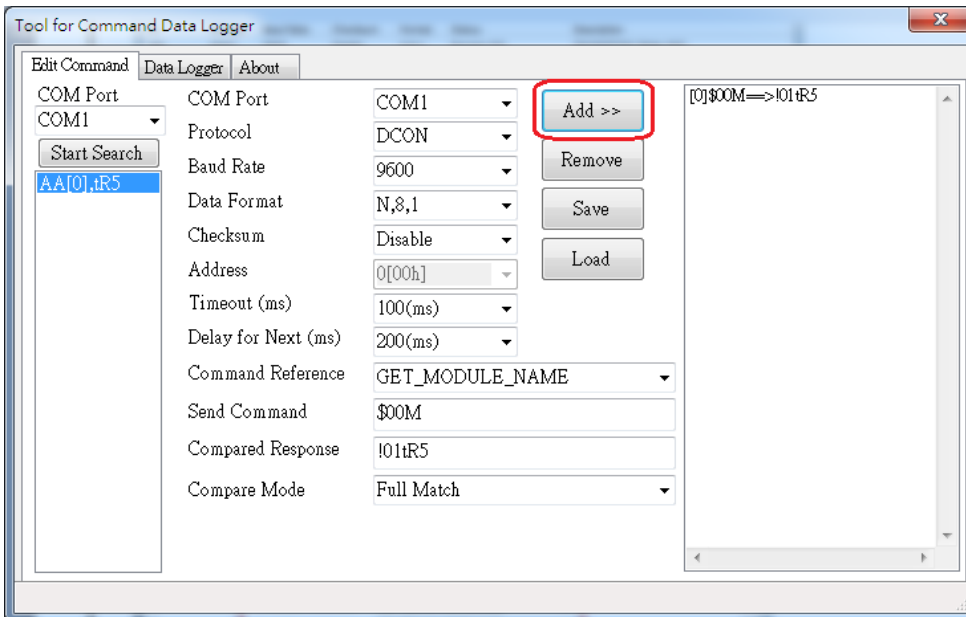


5. Comparative Response: the string used to compare the actual response.
6. Compared Mode: Full Match, Data Length (not counting the ending characters), Partial Match (comparing partial strings), None (no comparison)

<b>Classification</b>	DCON Utility Pro FAQ				<b>No.</b>	DCON_01_003	
<b>Author</b>	Martin	<b>Version</b>	1.0.0	<b>Date</b>	2019/12/03	<b>Page</b>	3/2

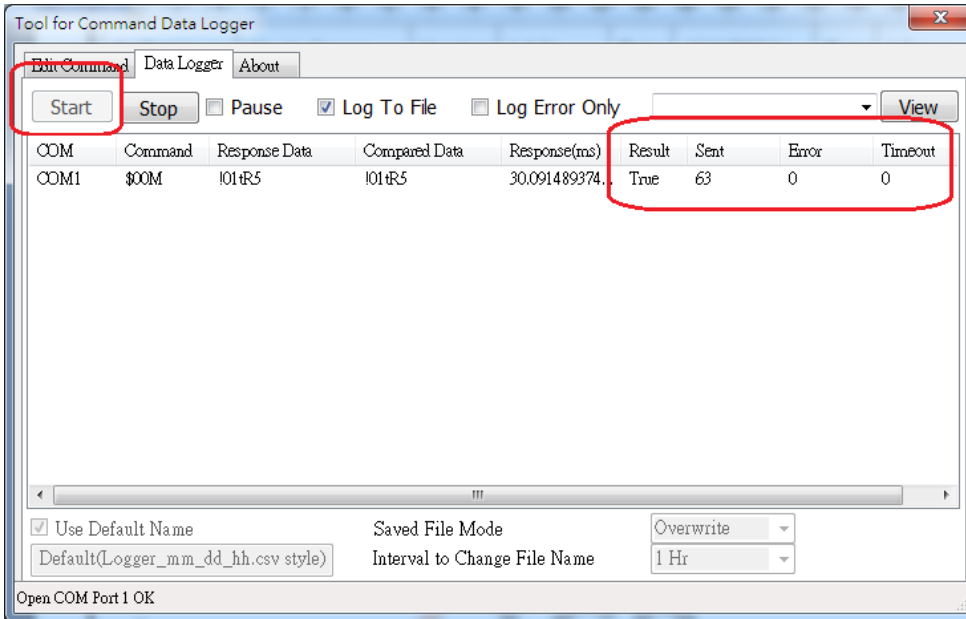


### Step 3: add the command

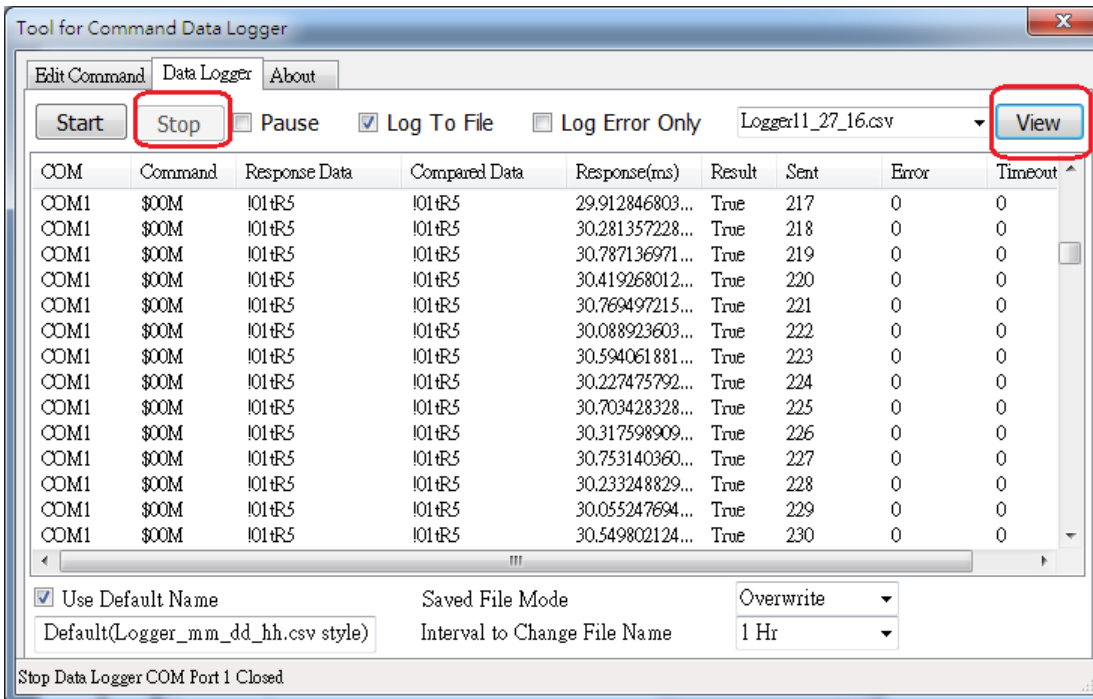


<b>Classification</b>	DCON Utility Pro FAQ				<b>No.</b>	DCON_01_003	
<b>Author</b>	Martin	<b>Version</b>	1.0.0	<b>Date</b>	2019/12/03	<b>Page</b>	4/2

**Step 4: start recording data**

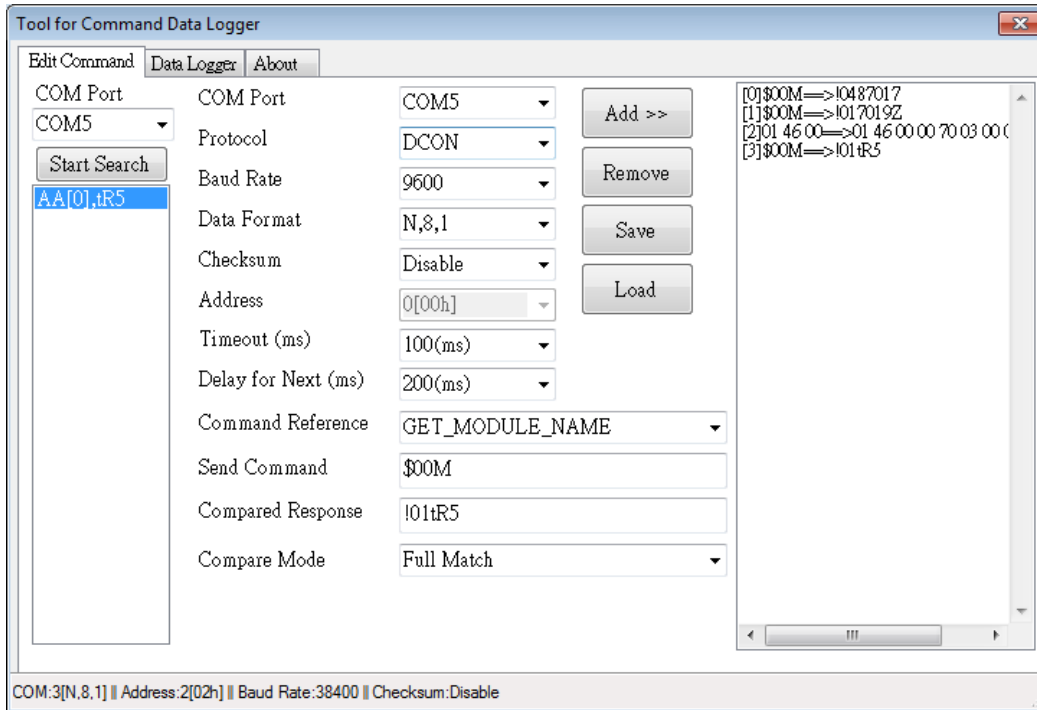


**Step 5: Stop recording and view the data.** Since it is saved as a \*.csv file, you can view the data in Excel



<b>Classification</b>	DCON Utility Pro FAQ				<b>No.</b>	DCON_002	
<b>Author</b>	Martin/Anna	<b>Version</b>	1.0.0	<b>Date</b>	2019/08/13	<b>Page</b>	5/2

Note 1: The Data Logger can read multiple COM Port data at the same time. The operation method is to search different COM Port modules in sequence, edit and add commands for each module, and then start the logging function.



Note 2: Commands that support different protocols

