

Classification	NAPOPC_XPE FAQ				No.	1-008-E	
Author	James	Version	1.0.0	Date	2010/7/12	Page	1/6

How to use ET-7000 modules in NAPOPC_XPE?

Applies to:

Platform	OS version	NAPOPC version
XPAC	XPE	NAPOPC_XPE v1.12

There are two ways to communicate with ET-7000:

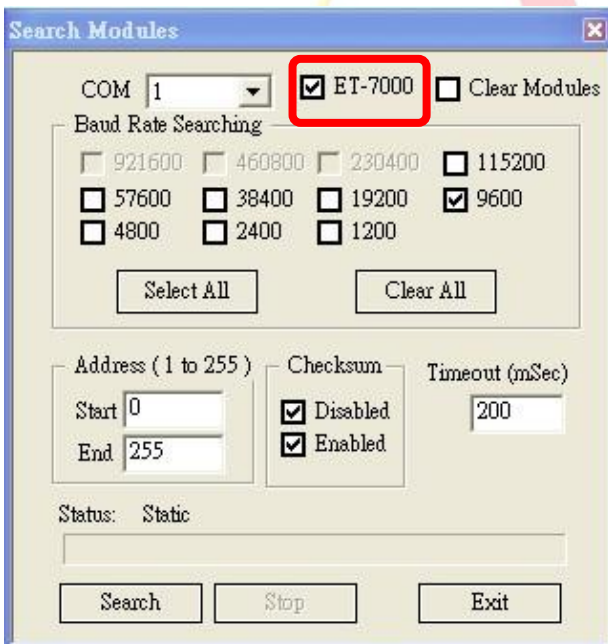
Search (Automatic) / Add Device (Manual)

We use ET-7060 as an example:

Search (Automatic)

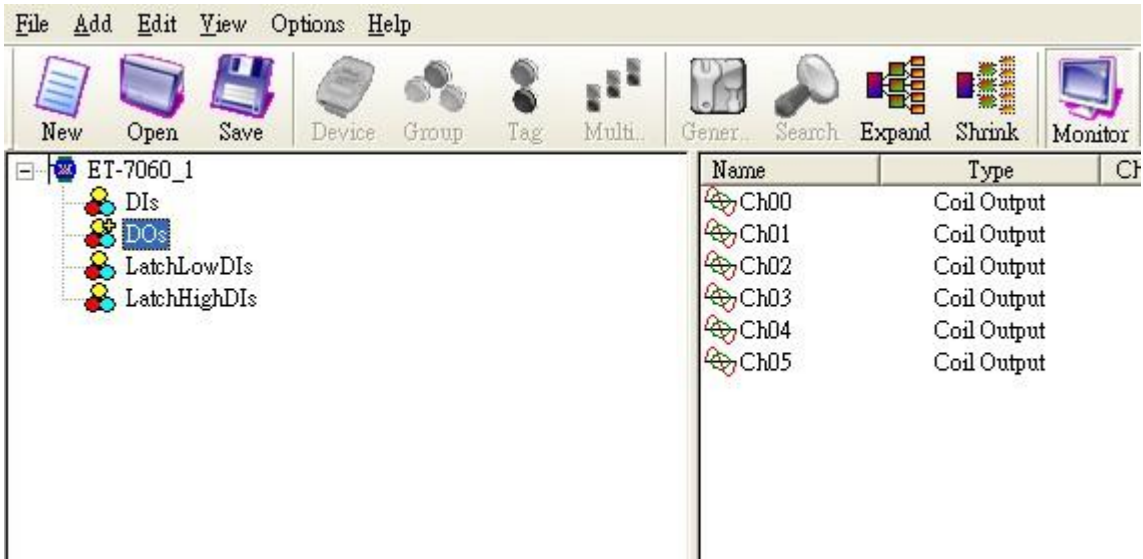
Step 1

Click "Search" on the Toolbar, it will show you a dialog as below:



Just check "ET-7000" box, then press "Search" button to search.

Classification	NAPOPC_XPE FAQ				No.	1-008-E	
Author	James	Version	1.0.0	Date	2010/7/12	Page	2/6



Communication will be established, and you can exchange data between XPAC and ET-7060.

Add Device (Manual)

Step 1

Click "Device" on the Toolbar, it will show you the dialog as below.



Classification	NAPOPC_XPE FAQ				No.	1-008-E	
Author	James	Version	1.0.0	Date	2010/7/12	Page	3/6

The protocol of ET-7060 is Modbus. Choose it first.

Modbus TCP mode

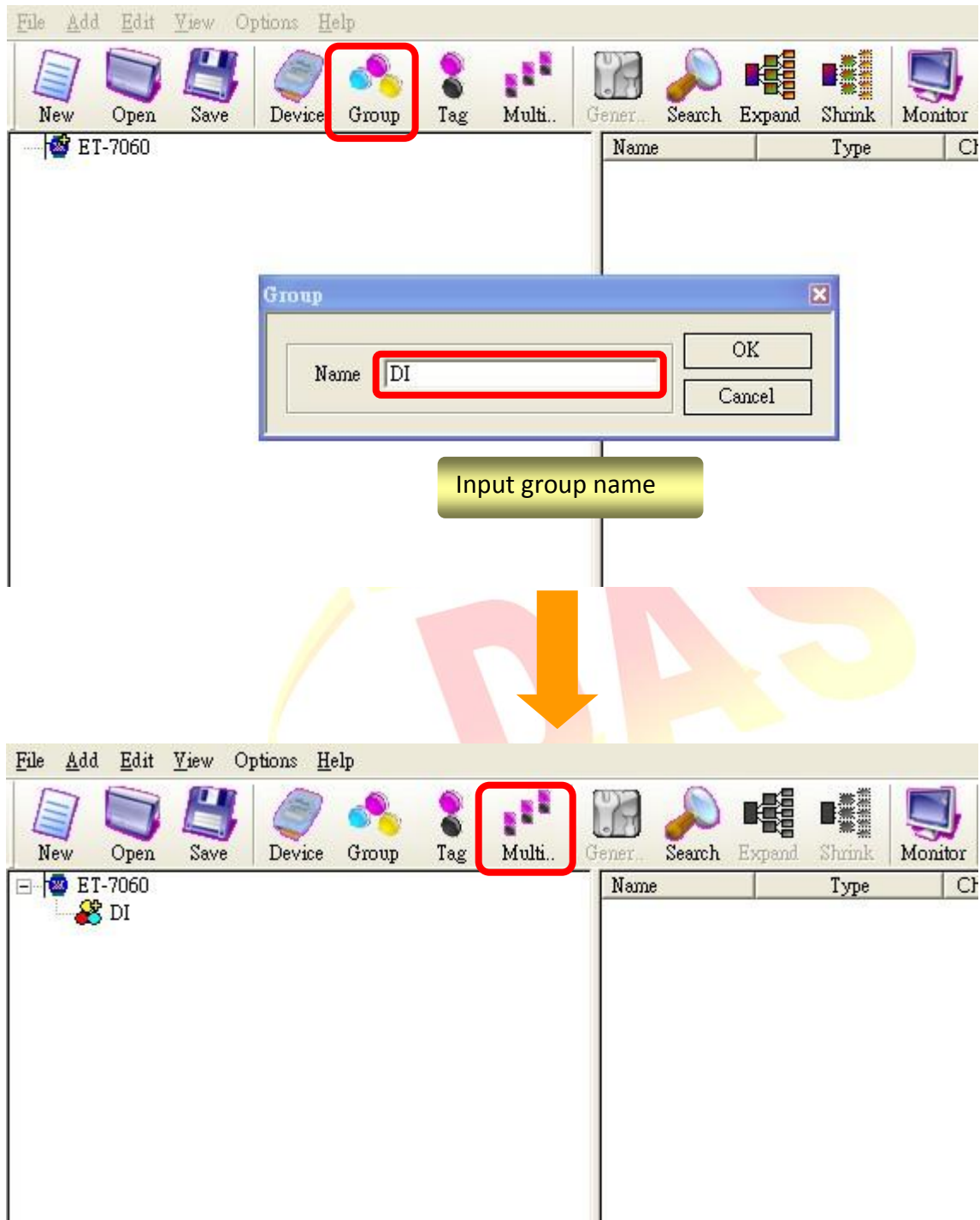
IP Address of ET-7060

Check the options which are marked, then click "OK" to add device.

Classification	NAPOPC_XPE FAQ				No.	1-008-E	
Author	James	Version	1.0.0	Date	2010/7/12	Page	4/6

Step 2

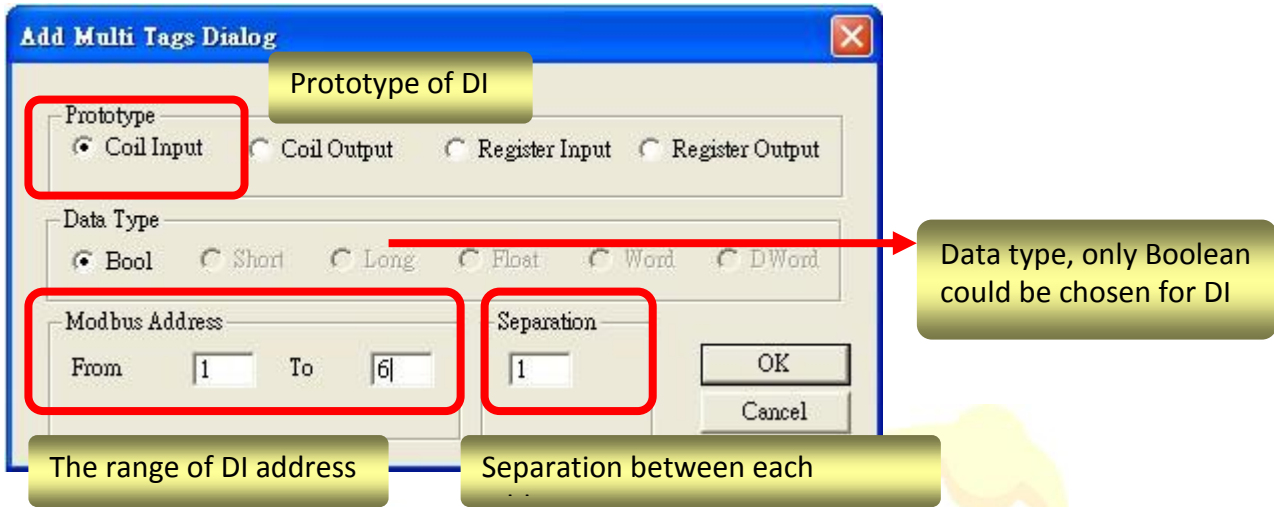
After adding ET-7060, click "Group" on the Toolbar to add group for ET-7060. Input group name in the "Group" dialog. (For example, group name is "DI".)



Classification	NAPOPC_XPE FAQ				No.	1-008-E	
Author	James	Version	1.0.0	Date	2010/7/12	Page	5/6

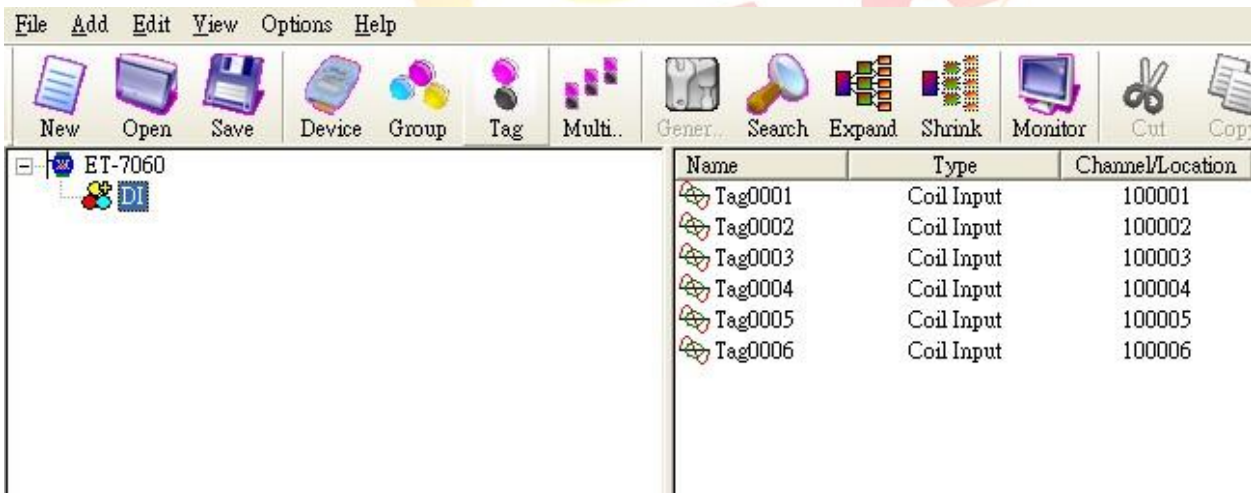
Step 3

Now ET-7060 has “DI” group, you should add tags inside “DI” group. Click “Multi tags” on the Toolbar.



Click “OK” to add tags after checking these options.

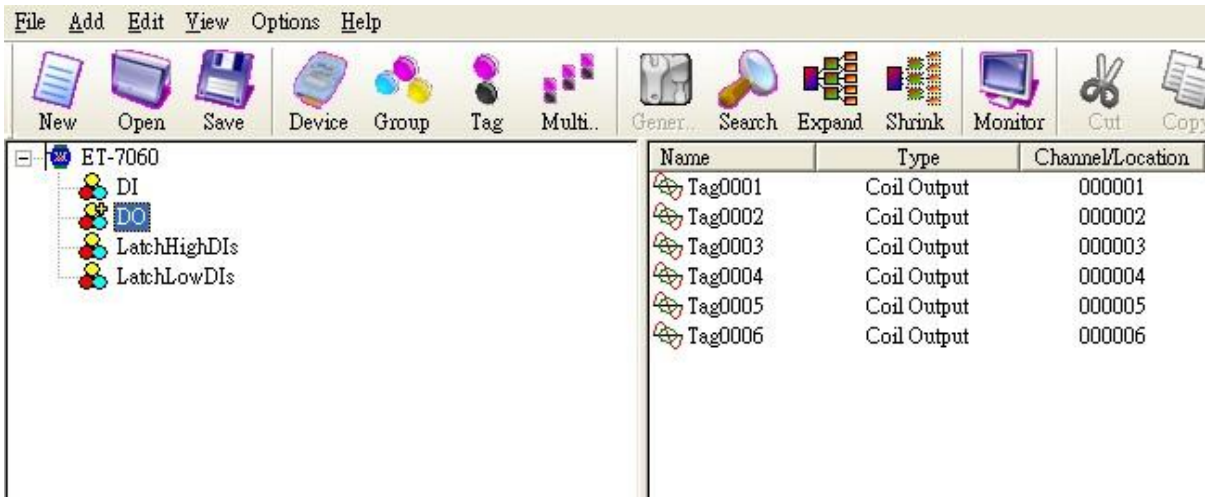
Step 4



You could communicate with DI of ET-7060 now. You could also add other tags as the same way just notice the difference of [address](#) and [Prototype](#).

- DO: 1~6 (Coil Output)
- LatchHighDIs: 33~38
- LatchLowDIs: 65~70

Classification	NAPOPC_XPE FAQ				No.	1-008-E	
Author	James	Version	1.0.0	Date	2010/7/12	Page	6/6



Finally, you could accomplish the entire communication between NAPOPC_XPE and ET-7060.

⚠ Caution:

In the whole procedure you will have several actions about “add” something, such as “Group” or “Tag”. Before adding something for a certain part, **you have to click the part first, and then you could add what you want.**

For example:

If you intend to add tags for “DO” group, you should click “DO” in the group list to focus on the group, then click “Multi tags” to add tags. This is the correct way to add group/tag.