

| | | | | | | | |
|----------------|------------------------------------|---------|-------|------|-----------|----------|-----|
| Classification | System and Application FAQ on XPAC | | | | No. | 2-006-00 | |
| Author | WeiKai | Version | 1.0.0 | Date | 2011/3/23 | Page | 1/2 |

How to recover the default factory settings

Applied to:

| Platform | OS version | XPAC utility version |
|-------------|-----------------------|----------------------|
| XPAC series | All versions (WinCE6) | All versions |
| | | |
| | | |
| | | |

Tips & Warnings



Remember your settings before recover the default factory settings.

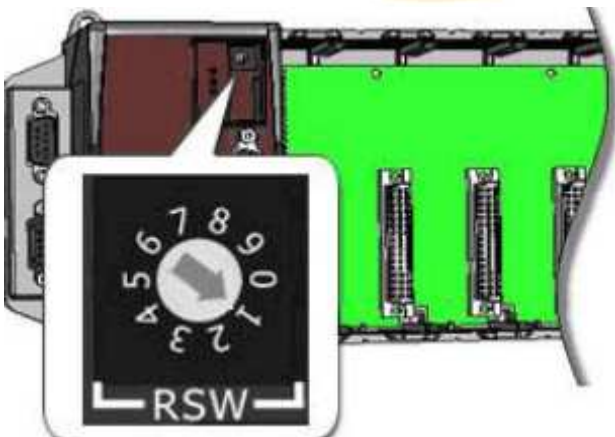
Default factory settings:

System Settings->Display resolution: 1024*768(XP-8x4x)
 Ethernet Settings->LAN1 and LAN2: DHCP enabled
 FTP Settings->Access->Allow Anonymous: Enabled
 FTP Settings->Access->Allow Anonymous Upload: Enabled
 Auto Execution: empty
 Touch Panel Drivers: uninstalled
 Control Panel->Power->Schemes->Switch state to User Idle: Never
 Control Panel->Power->Schemes->Switch state to System Idle: Never

If an unexpected problem occurs, you can recover the default factory settings by performing the following steps:

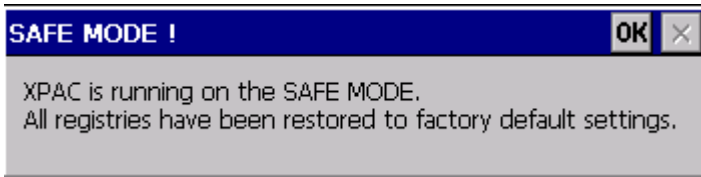
Step 1: Reboot in Safe mode.

Turn the rotary switch on the device to “1”, and then restart the XPAC



| | | | | | | | |
|----------------|------------------------------------|---------|-------|------|-----------|----------|-----|
| Classification | System and Application FAQ on XPAC | | | | No. | 2-006-00 | |
| Author | WeiKai | Version | 1.0.0 | Date | 2011/3/23 | Page | 2/2 |

Step 2: After rebooting, Show the message and Click the “ok” button.



Step 3: Turn the rotary switch on the device to “0” and reboot.

