

Classification	System and Application FAQ on XPAC				No.	2-002-01	
Author	Cid	Version	1.0.0	Date	2010/5/4	Page	1/11

## How to use ActiveSync through the serial port?

*Applied to:*

<i>Platform</i>	<i>OS version</i>	<i>XPAC utility version</i>
<i>XPAC series</i>	<i>All versions (WinCE6)</i>	<i>All versions</i>

ActiveSync helps you to synchronize the files on your host PC with the XPAC.

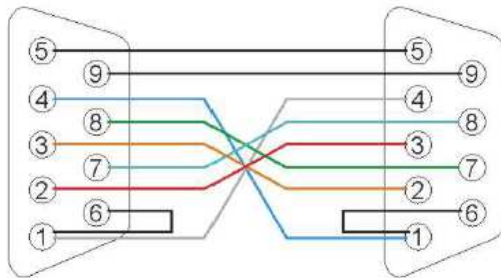
Here the steps of using ActiveSync to communicate with XPAC through COM port are subdivided into three parts:

1. Configuration on XPAC (page 2)
2. Execution ActiveSync on PC (page 6)
3. File Synchronization Example (page 10)

### Tips & Warnings



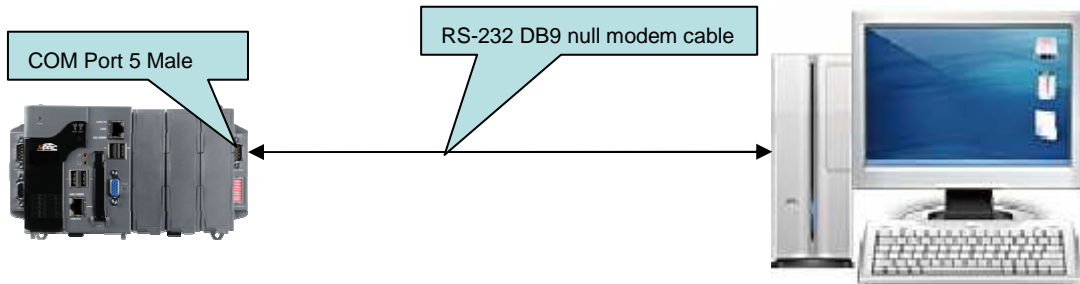
*You need a 9-pin null-modem cable to connect the XPAC to PC. The wire tip of the null modem cable is as below:*



*On the XP-8000, only **COM5** allows the ActiveSync communication request from the PC via the serial port.*

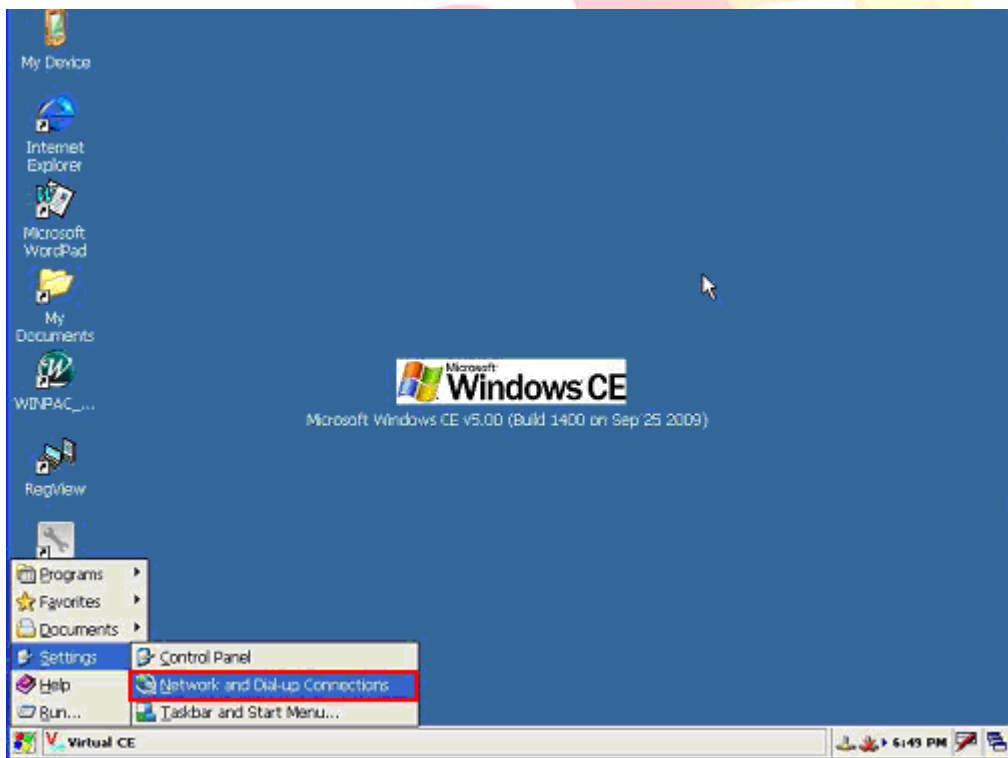
Classification	System and Application FAQ on XPAC				No.	2-002-01	
Author	Cid	Version	1.0.0	Date	2010/5/4	Page	2/11

XP-8x4x



## 1. Configuration on XPAC

Step1. Click Start → Settings → **Network and Dial-up Connections**.

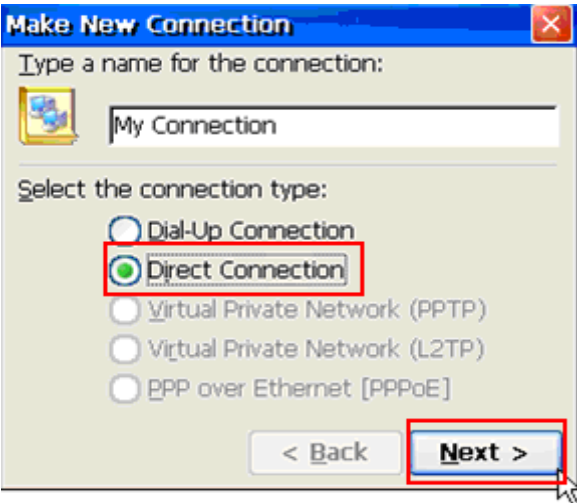


Step2. Double Click the “Make New Connection” icon.

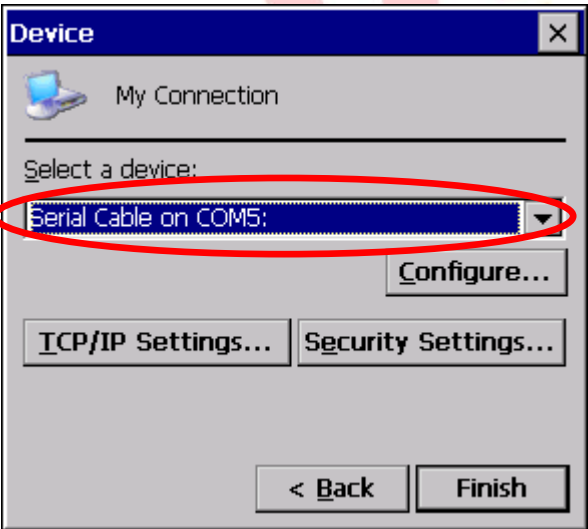


Classification	System and Application FAQ on XPAC				No.	2-002-01	
Author	Cid	Version	1.0.0	Date	2010/5/4	Page	3/11

Step3. Select the "Direct Connection" radio button and then click the "Next" button.

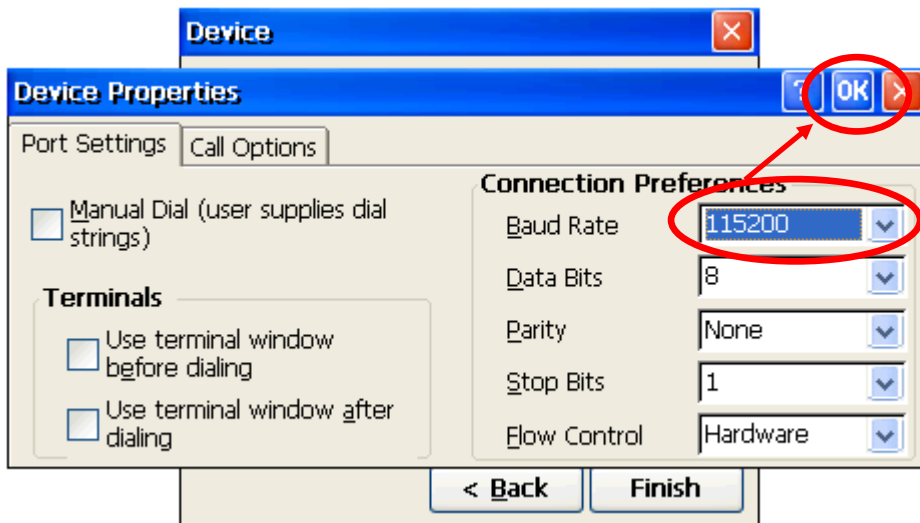
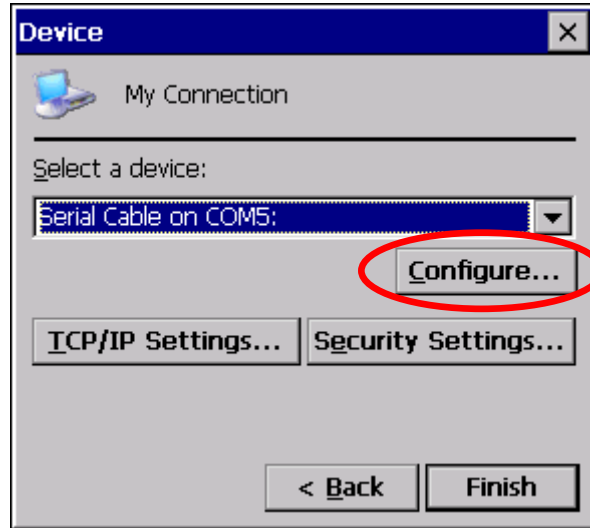


Step4. Choose COM5 (for XPAC) from the "Select a device" ComboBox.



Classification	System and Application FAQ on XPAC				No.	2-002-01	
Author	Cid	Version	1.0.0	Date	2010/5/4	Page	4/11

Step5. Click the “Configure” button, select the appropriate Baud Rate and click the “OK” button.



## Tips & Warnings



The Baud Rate range for different ActiveSync versions is:

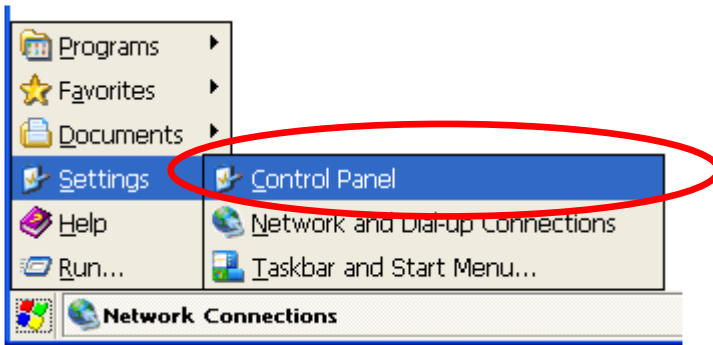
For ActiveSync **version 3.7 or 3.7.1**, 19200bps or 57600bps can be selected.

For ActiveSync **version 3.8 or 4.5**, 19200bps, 38400bps, 57600bps or 115200bps can be selected.

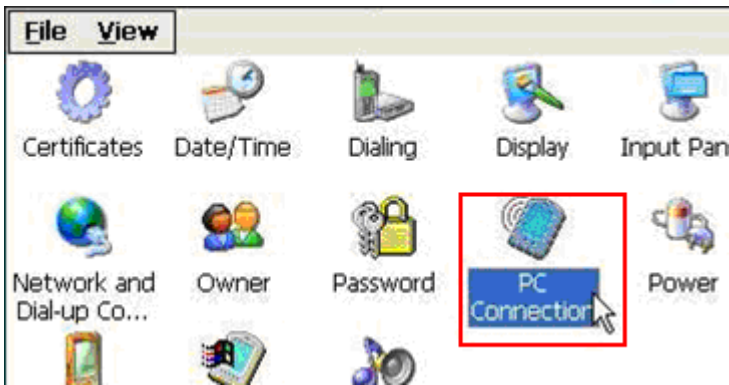
The ActiveSync program on the PC side does not need to set Baud Rate.

Classification	System and Application FAQ on XPAC				No.	2-002-01	
Author	Cid	Version	1.0.0	Date	2010/5/4	Page	5/11

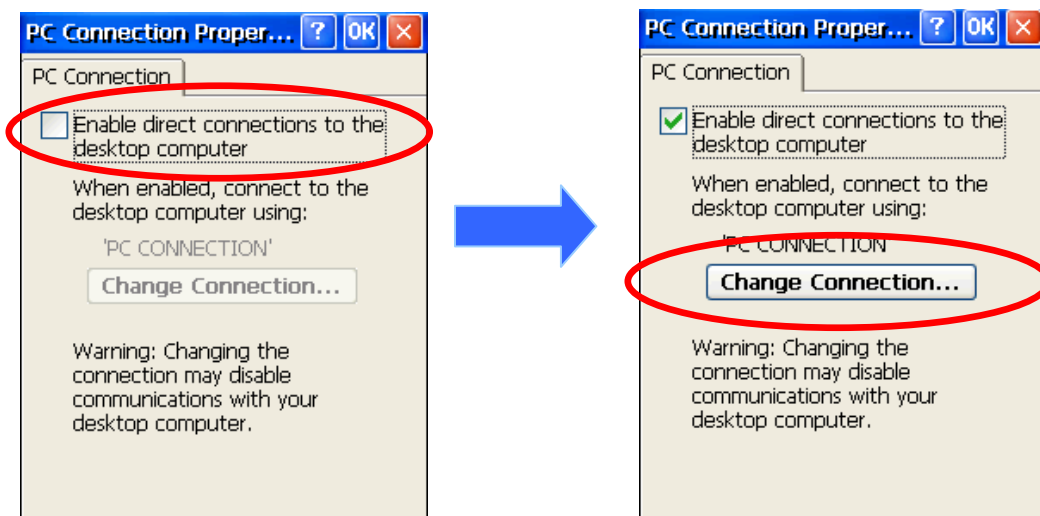
Step6. Click Start → Settings → Control Panel.



Step7. Click the “PC connection” icon.

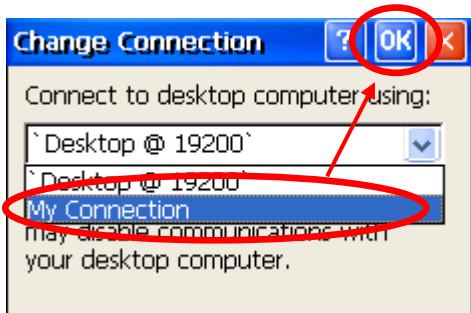


Step8. Check the “Enable direct connections to the desktop computer” checkbox and Click the “Change Connection” button.

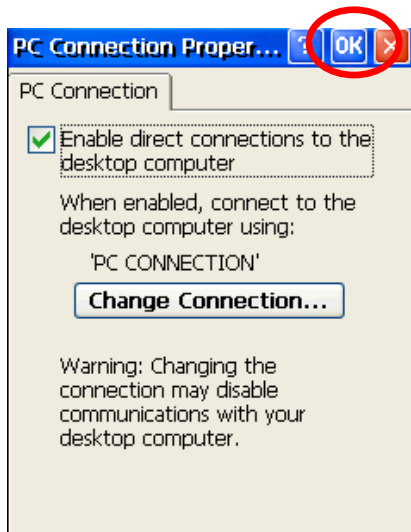


Classification	System and Application FAQ on XPAC				No.	2-002-01	
Author	Cid	Version	1.0.0	Date	2010/5/4	Page	6/11

Step9. Change to a new connection by selecting “My Connection” from the ComboBox, and then click the “OK” button.



Step10. Click the “OK” button.

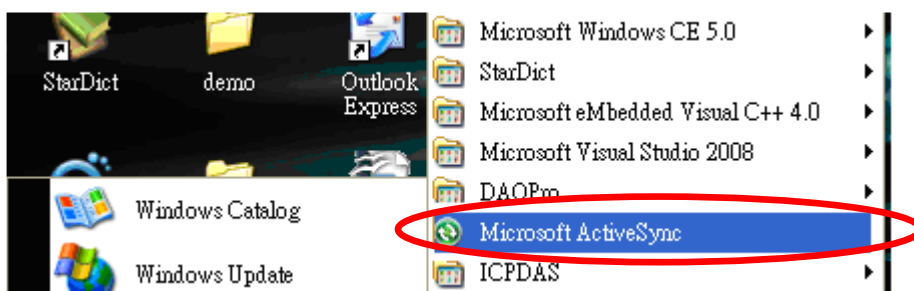


## 2. Execution ActiveSync on PC

Step1. Install Microsoft ActiveSync software on the PC (Version 3.7 or later).

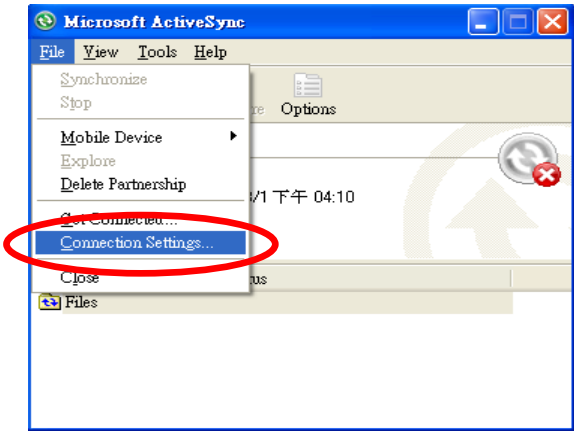
Below we use ActiveSync 4.5 as the example.

Step2. Run ActiveSync (Start → Programs → Microsoft ActiveSync)

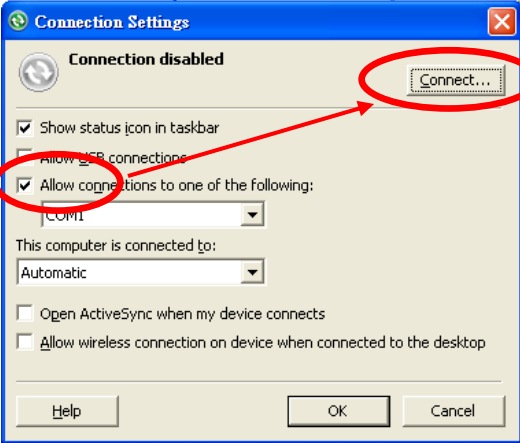


Classification	System and Application FAQ on XPAC				No.	2-002-01	
Author	Cid	Version	1.0.0	Date	2010/5/4	Page	7/11

Step3. Click the “File” menu and then click the “**Connection Settings**” item.

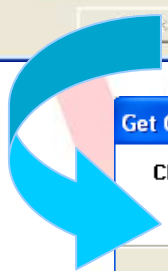
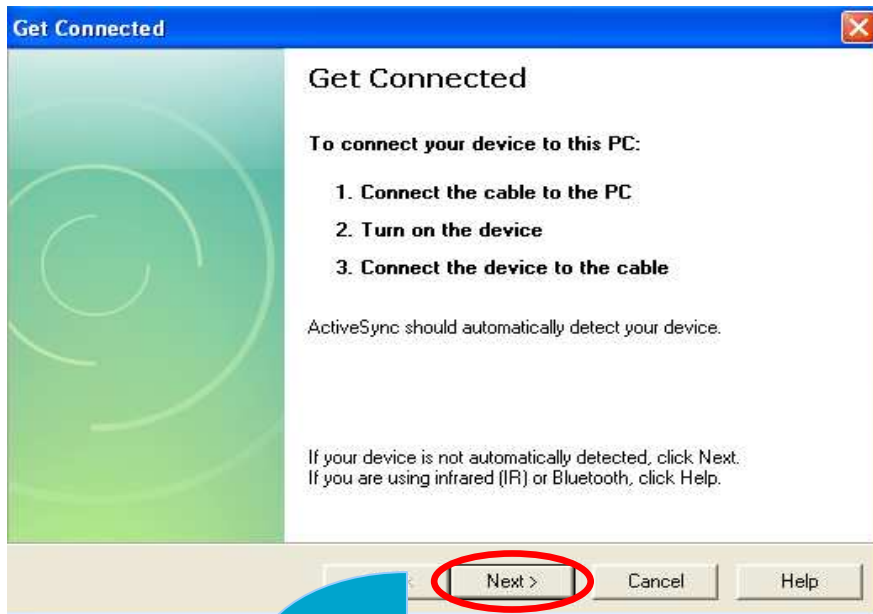


Step4. Check “Allow connections to one of the following:” and then click “**connect**”.

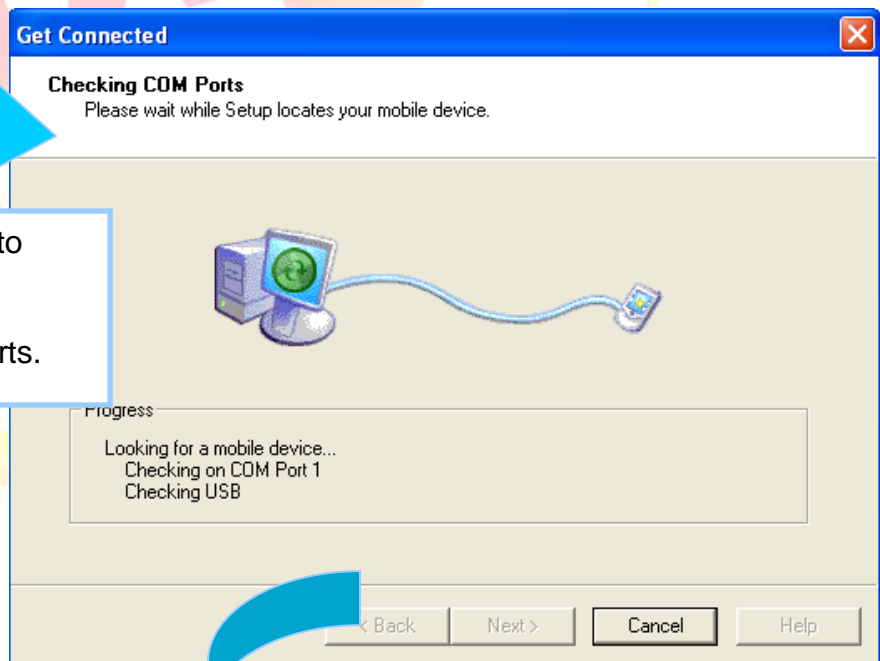


Classification	System and Application FAQ on XPAC				No.	2-002-01	
Author	Cid	Version	1.0.0	Date	2010/5/4	Page	8/11

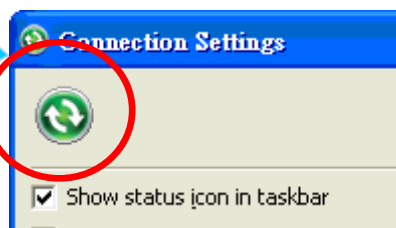
Step5. Click the "Next" button



The program starts to check the devices connected to COM ports.



After ActiveSync is established, the Active Sync icon will change to green. Press "OK" to close the window.





Classification	System and Application FAQ on XPAC				No.	2-002-01	
Author	Cid	Version	1.0.0	Date	2010/5/4	Page	9/11

Step6. Select “Yes” to set up a partnership and then click the “Next” button.



Step7. Click the “Sync”, and then ActiveSync can be used to synchronize the file for XPAC with the host PC.



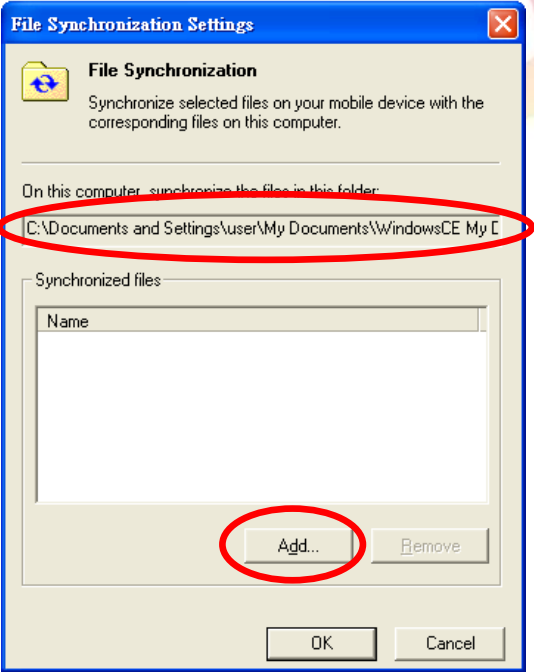
Classification	System and Application FAQ on XPAC				No.	2-002-01	
Author	Cid	Version	1.0.0	Date	2010/5/4	Page	10/11

### 3. File Synchronization Example

Step1. Double click the "Files" item.



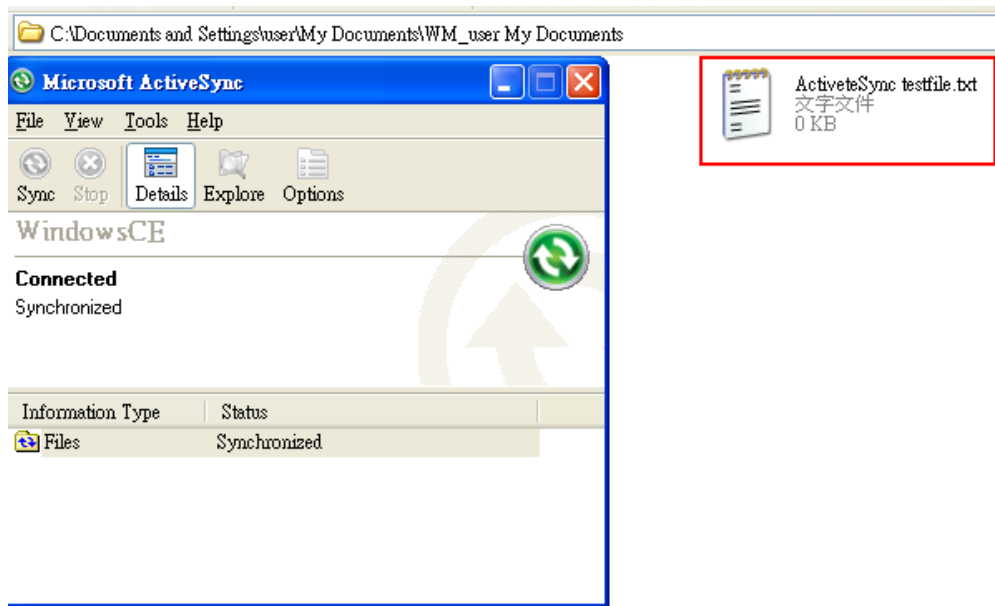
Step2. Press "Add..." button to select files for Synchronization.



Classification	System and Application FAQ on XPAC				No.	2-002-01	
Author	Cid	Version	1.0.0	Date	2010/5/4	Page	11/11

Step3. Click the “OK” button in the above dialog box, the ActiveSync starts to synchronize files in “C:\Documents and Settings\user\My Documents\WindowsCE My Documents” folder on PC and “My Documents” folder on XPAC.

**The synchronized folder on PC:**



**The synchronized folder on XPAC:**

