

Classification	System and Application FAQ on XPAC				No.	1-004-06	
Author	WeiKai	Version	1.0.1	Date	2010/6/29	Page	1/7

How to set up a Penmount serial touch panel

Applies to:

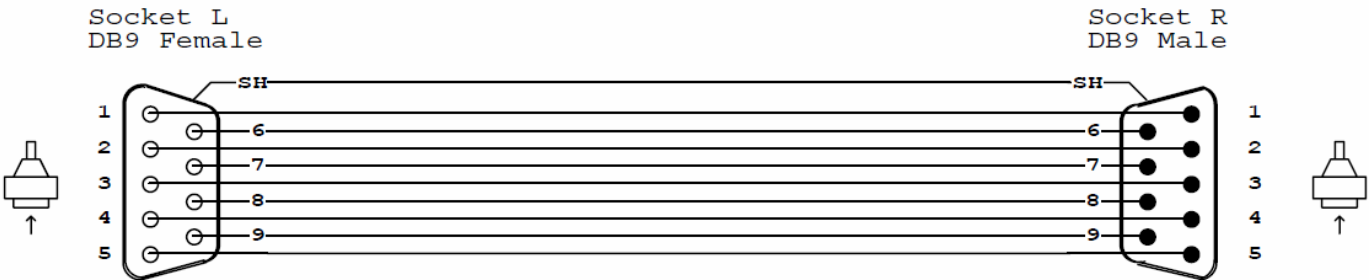
Platform	OS version	XPAC utility version
XPAC series	All versions (WinCE6)	All versions

N/A: Not applicable to this platform and OS.

Tips & Warnings

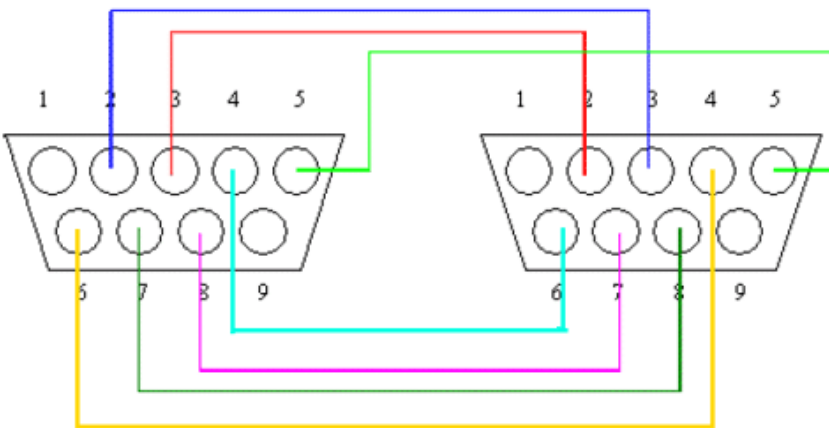
⚠ Serial COM Ports 2 and 5 on XP-8000 are standard female/male RS-232 COM Ports. If COM3 is used to connect to the touch panel, you will need a "NULL MODEM".

Standard Wiring



NULL MODEM

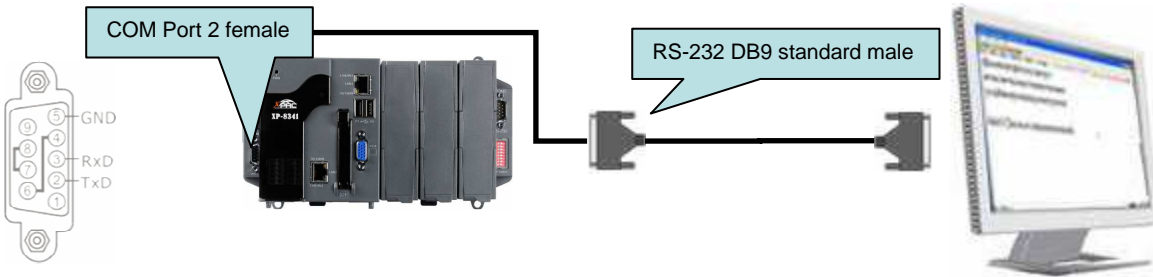
Null Modem DB9 cable : Dreambox Serial cable



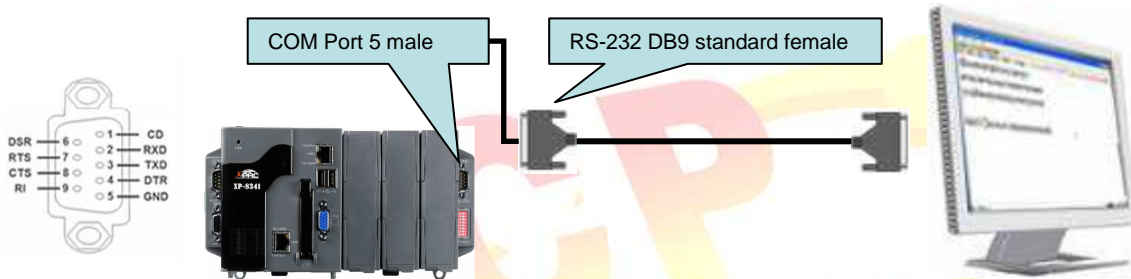
The DB9 side showed here is the one you solder the wires

Classification	System and Application FAQ on XPAC				No.	1-004-06	
Author	WeiKai	Version	1.0.1	Date	2010/6/29	Page	2/7

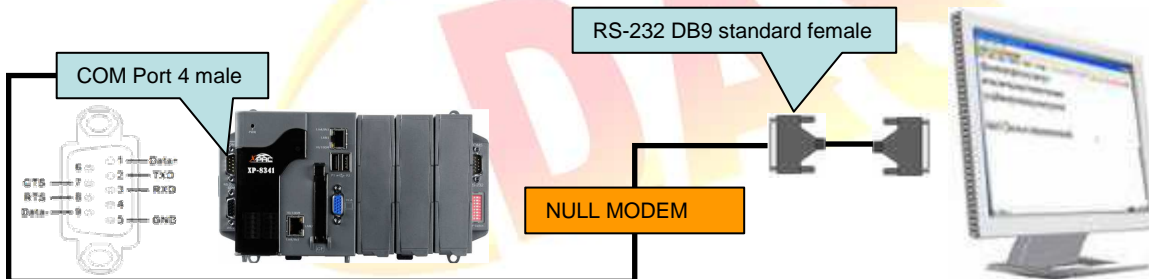
Connecting to COM 2



Connecting to COM 5



Connecting to COM 4



To use a Penmount serial touch panel, perform the following steps:

Step 1: Location of the devices for the touch panel

The PenMount_Serial_TOUCH_V3.3_yyyymmdd_XPAC_CE6.CAB file is located at (yyymmdd means Year /Month/ Day)

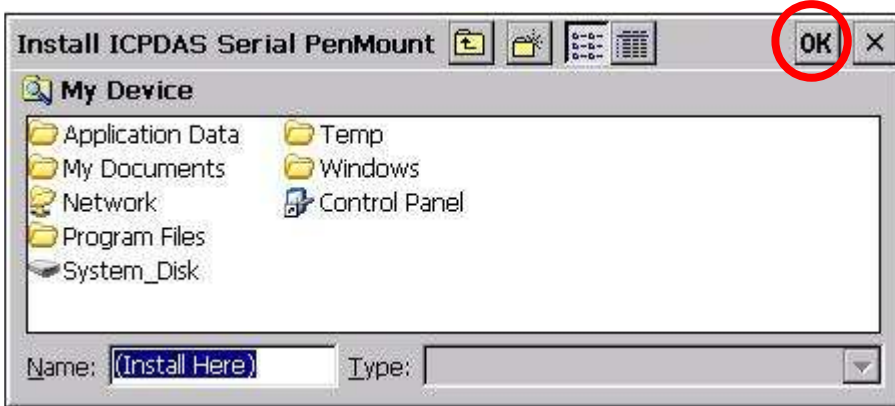
CD:\System_Disk\External_device_driver\

- ftp://ftp.icpdas.com/pub/cd/xp-8000-ce6/system_disk/external_device_driver/ (XP-8000-CE6)
- ftp://ftp.icpdas.com/pub/cd/xpac-atom-ce6/system_disk/external_device_driver/ (XP-8000-Atom-CE6)

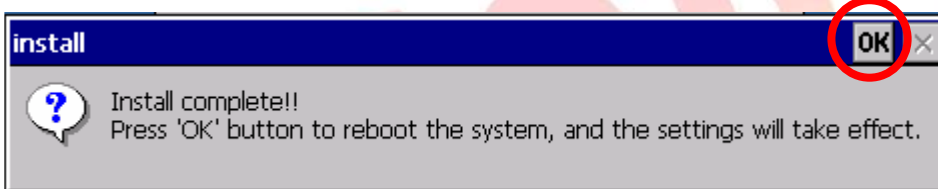
Classification	System and Application FAQ on XPAC				No.	1-004-06	
Author	WeiKai	Version	1.0.1	Date	2010/6/29	Page	3/7

Step 2: Install PenMount_Serial_TOUCH_V3.3_yyyymmdd_XPAC_CE6.CAB

2.1. Double-click the PenMount_Serial_TOUCH_V3.3_yyyymmdd_XPAC_CE6.CAB, and then click “ok”.



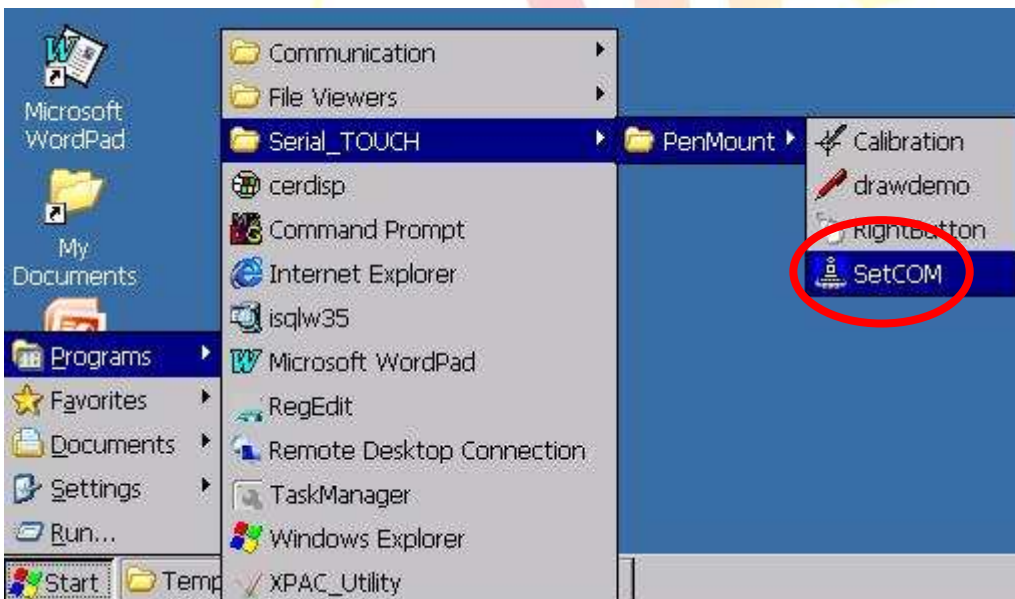
2.2 Double click ok, and will reboot your XPAC.



Step 3: Set your COM port.

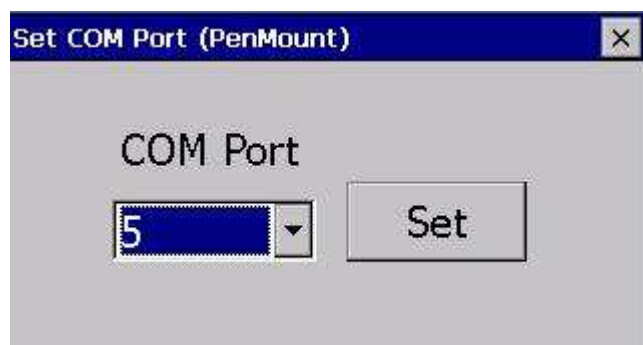
3.1 After rebooting, select a COM Port be used to connect to the touch panel.

3.2 Click Start->Programs->Searial_TOUCH->PenMount ->SetCom.exe



Classification	System and Application FAQ on XPAC				No.	1-004-06	
Author	WeiKai	Version	1.0.1	Date	2010/6/29	Page	4/7

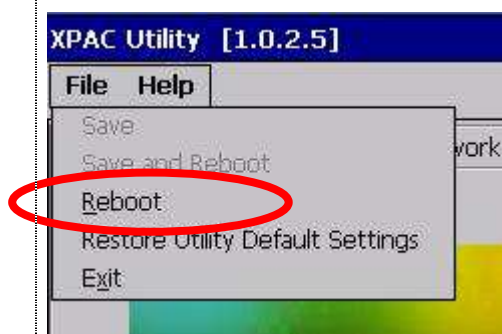
3.3 Perform the SetCOM process.



3.4 Select the COM port you use. (Default COM port is "5")

Step 4: Reboot your XPAC.

4.1. Start the XPAC utility on the desktop. **Click** the "File->Reboot" menu option.



4.2. **Click** the "Yes" button and wait for the device to reboot.



Classification	System and Application FAQ on XPAC				No.	1-004-06	
Author	WeiKai	Version	1.0.1	Date	2010/6/29	Page	5/7

Step 5: Execute the calibration program.

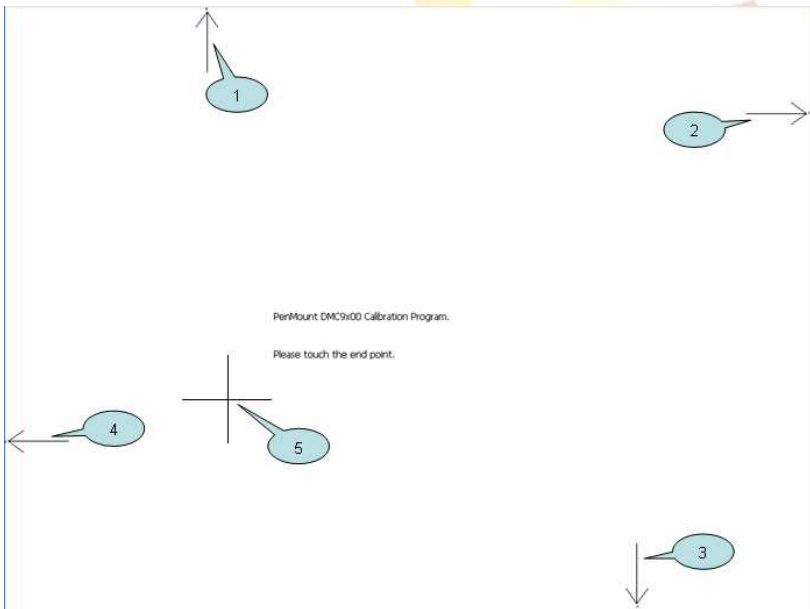
5.1. Click Start->Programs->Searial_TOUCH->PenMount ->Calibration.exe



5.3. Perform the calibration process.

5.3.1. Touch the end point and draw a line in the direction of the arrow.

5.3.2. Touch the “+” icon on the monitor, to perform the calibration process.



Classification	System and Application FAQ on XPAC				No.	1-004-06	
Author	WeiKai	Version	1.0.1	Date	2010/6/29	Page	6/7

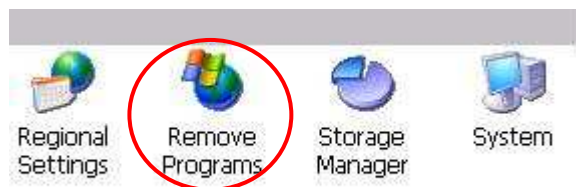
Uninstall ELO USB touch driver, and perform the following steps:

Step 1: Execute the Remove Program.

1.1 Click the Start->Settings ->Control Panel.

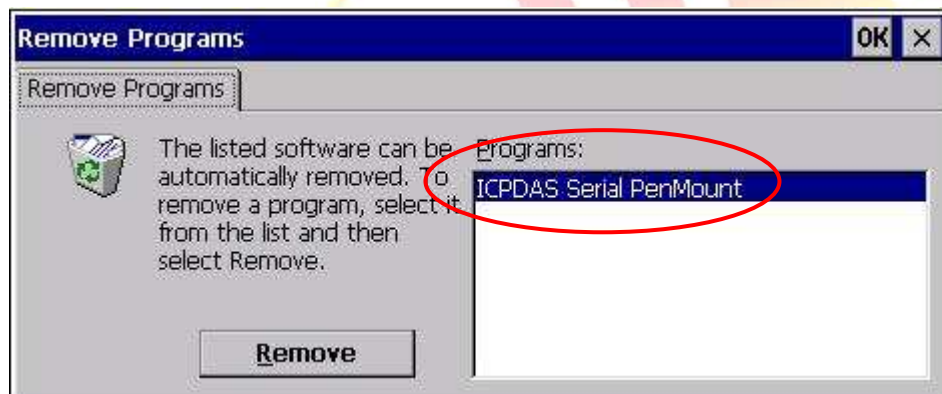


1.2 After Open “Control Panel”, double click “Remove Programs”.

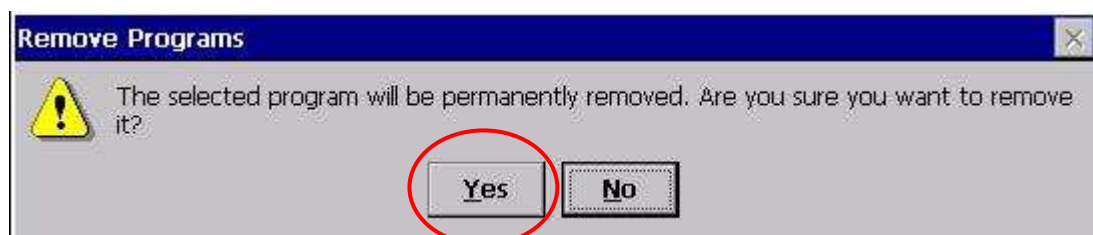


Step 2: Uninstall Penmount USB touch driver.

2.1 After execute “Remove Programs”, click “ICPDAS Serial PenMount” and then click “Remove” button



2.2 Click “Yes” button, and will uninstall PenMount Serial touch driver.



Classification	System and Application FAQ on XPAC				No.	1-004-06	
Author	WeiKai	Version	1.0.1	Date	2010/6/29	Page	7/7

2.3 Click "Yes", and will reboot your XAC to take effect.

