

| | | | | | | | |
|----------------|-------------------------|---------|-------|------|-----------|----------|------|
| Classification | Development FAQ on XPAC | | | | No. | 5-031-00 | |
| Author | WeiKai | Version | 1.0.0 | Date | 2011/4/11 | Page | 1/12 |

How to write a C#.net application with XPAC SDK in visual studio 2005

Applies to:

| <i>Platform</i> | <i>OS version</i> | <i>XPAC utility version</i> |
|--------------------|------------------------------|-----------------------------|
| <i>XPAC series</i> | <i>All versions (WinCE6)</i> | <i>All versions</i> |
| | | |
| | | |
| | | |

The XPAC SDKs provides a complete solution to integrate with XPAC and compatible with Visual C#, Visual Basic .net and C++. In order to use a component in your application, you must first add a reference to it.

Step 1 Get the XPacNet.dll and copy it to the project folder

The XPacNet.dll can be obtained from any C# demo program that has been provided on the CD or by downloading the latest version from ICP DAS web site. You can obtain by following list.

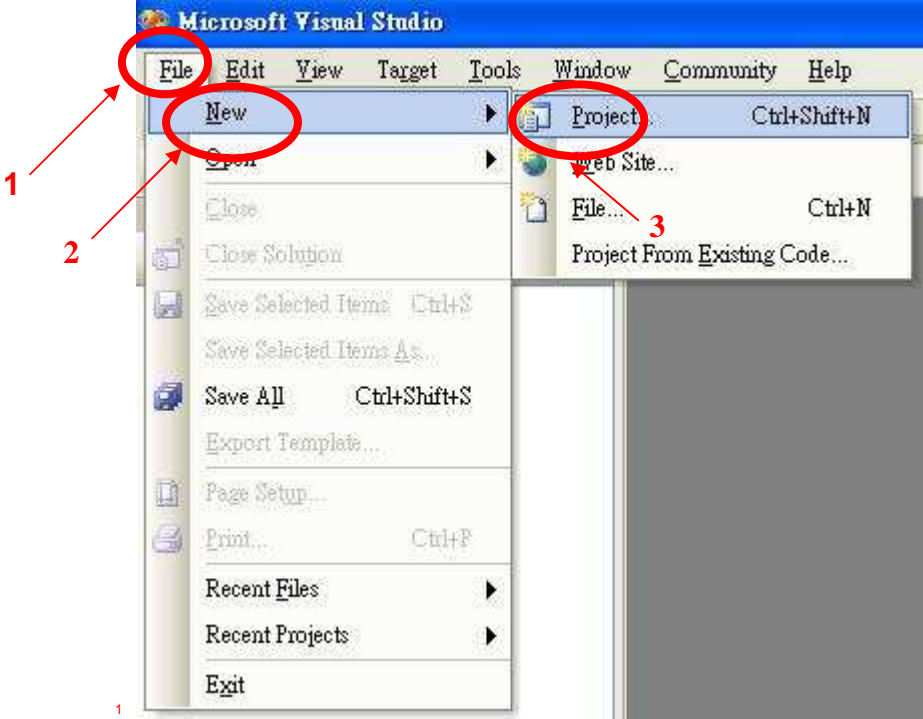
1. CD:\SDK\XPacNET
2. <ftp://ftp.icpdas.com/pub/cd/xp-8000-ce6/sdk/xpacnet/>
3. <ftp://ftp.icpdas.com/pub/cd/XP-8000-Atom-CE6/SDK/XPacNet/>



| | | | | | | | |
|----------------|-------------------------|---------|-------|------|-----------|----------|------|
| Classification | Development FAQ on XPAC | | | | No. | 5-031-00 | |
| Author | WeiKai | Version | 1.0.0 | Date | 2011/4/11 | Page | 2/12 |

Step 2 Create a new project

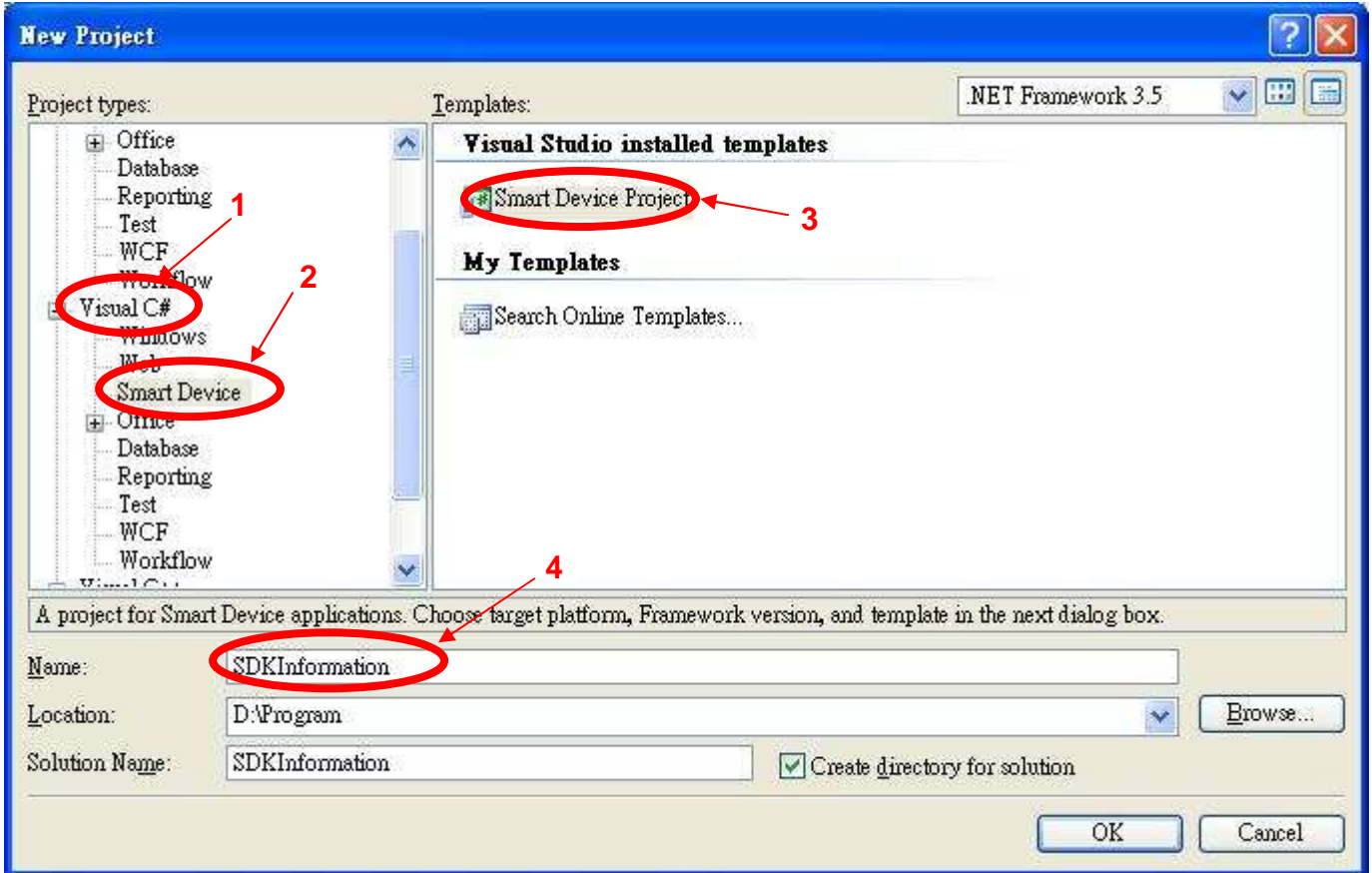
Click the File ->New->Project in order as following.



| | | | | | | | |
|----------------|-------------------------|---------|-------|------|-----------|----------|------|
| Classification | Development FAQ on XPAC | | | | No. | 5-031-00 | |
| Author | WeiKai | Version | 1.0.0 | Date | 2011/4/11 | Page | 3/12 |

Step 3 Perform the following steps in order

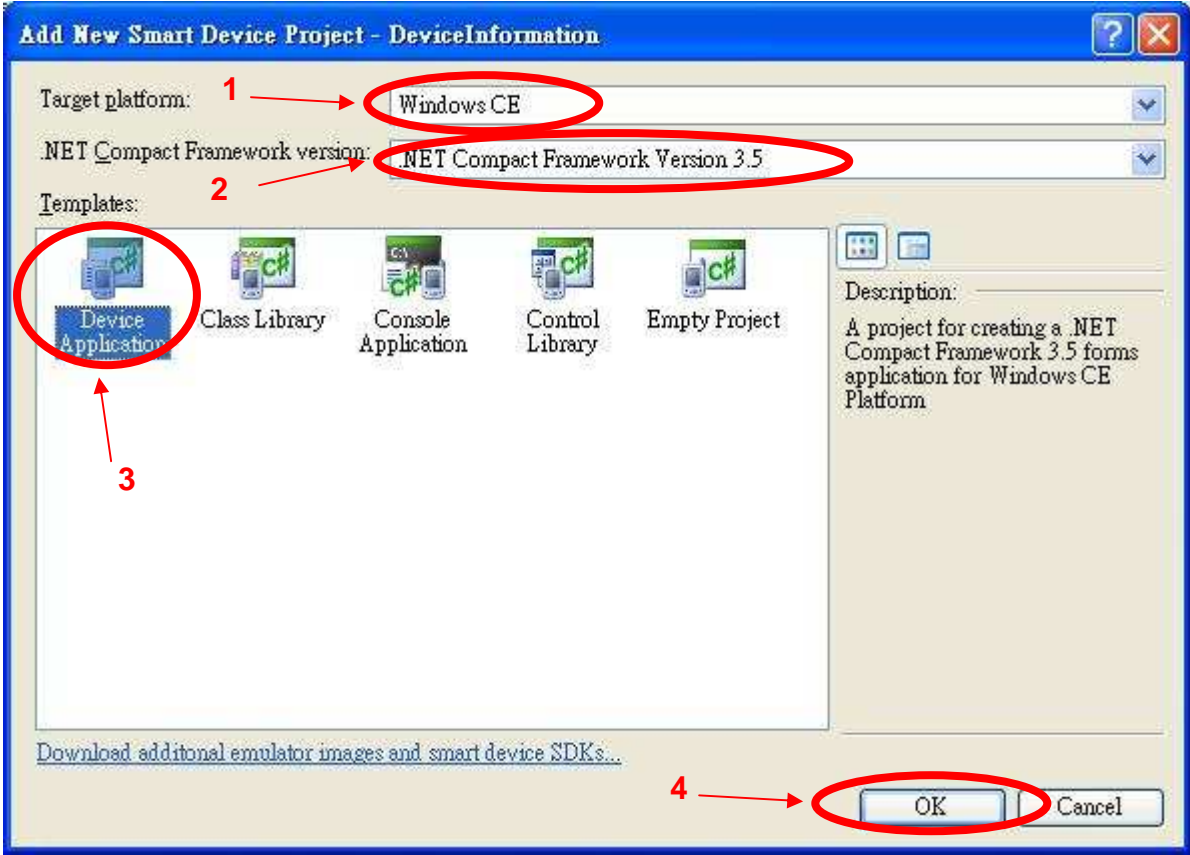
Select “Visual C#” → “Smart Device” → “Smart Device Project” and input your program name.



| | | | | | | | |
|----------------|-------------------------|---------|-------|------|-----------|----------|------|
| Classification | Development FAQ on XPAC | | | | No. | 5-031-00 | |
| Author | WeiKai | Version | 1.0.0 | Date | 2011/4/11 | Page | 4/12 |

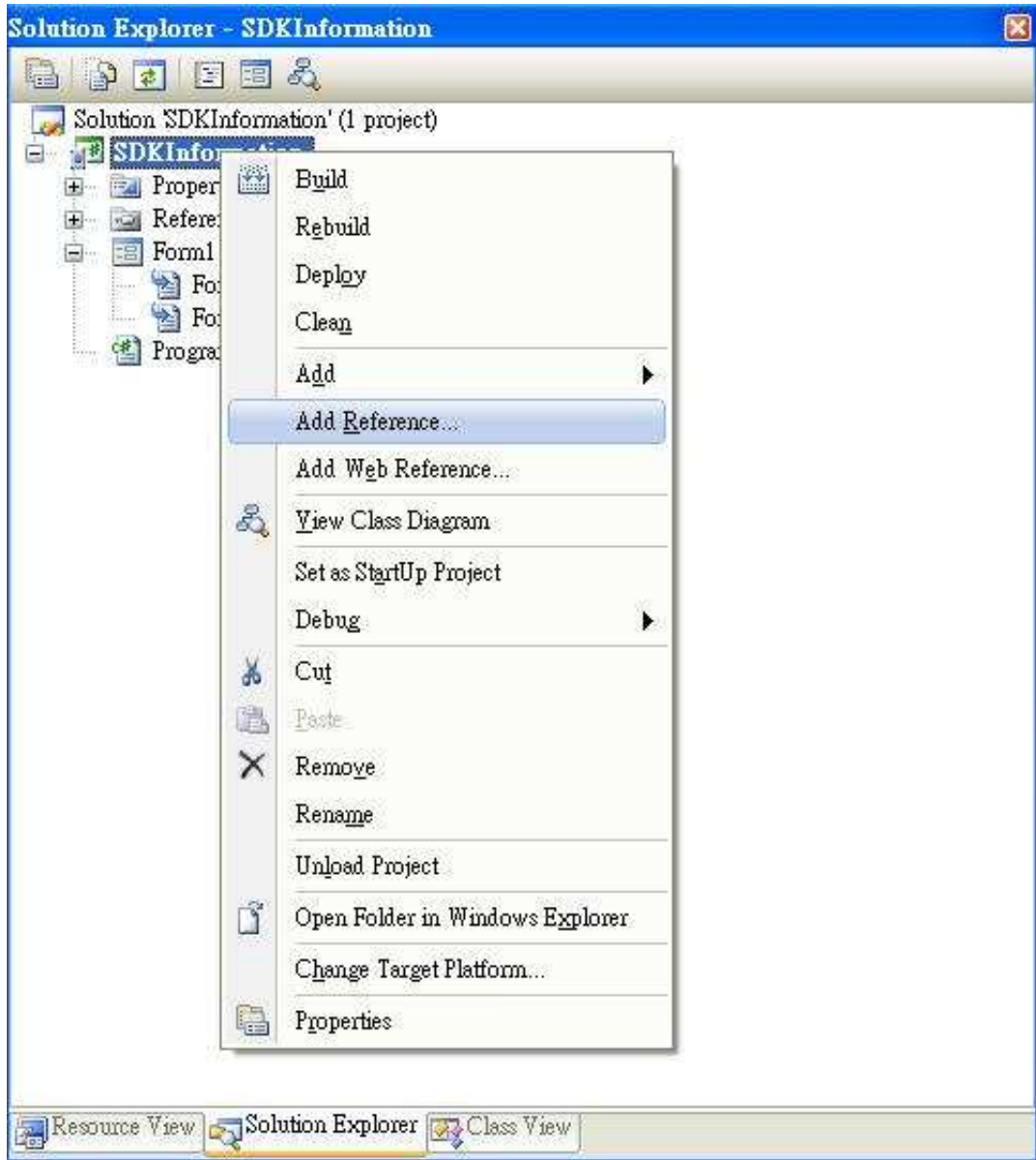
Step 4 Perform the following steps in order

Select “Windows CE” → Select “.NET Compact Framework Version 3.5” → Select “Device Application” and click “OK” button.



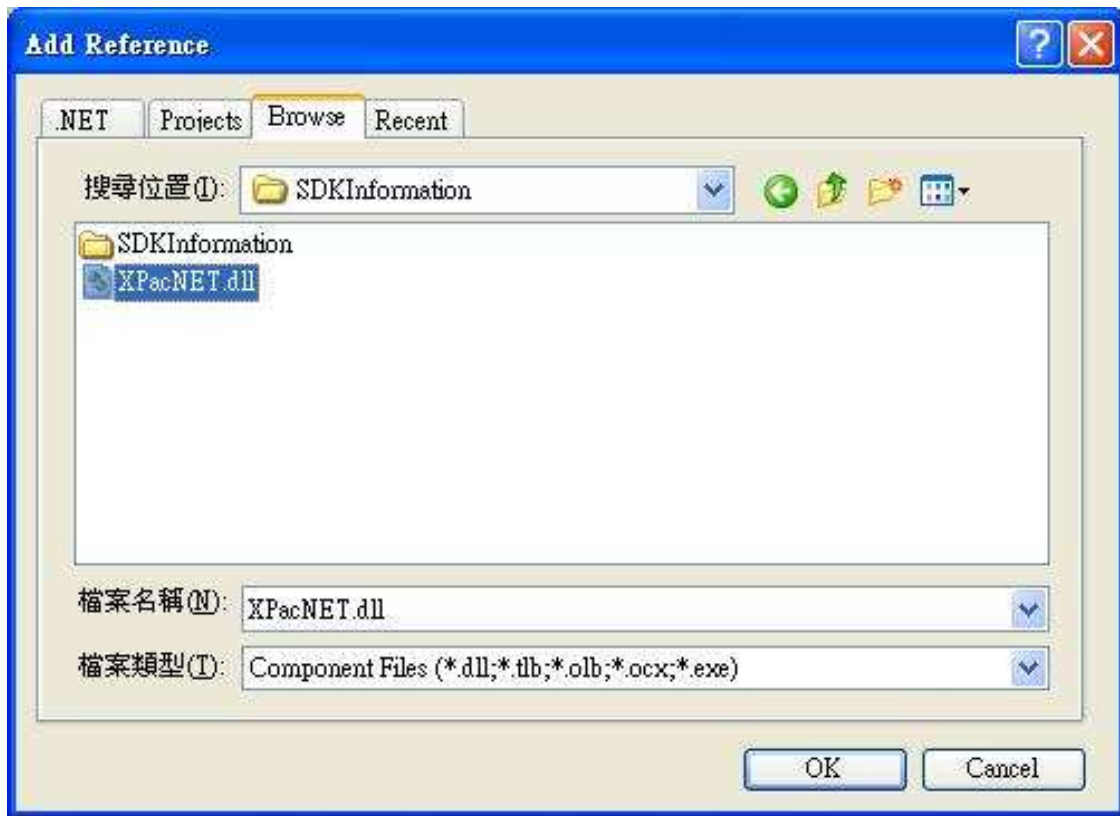
| | | | | | | | |
|----------------|-------------------------|---------|-------|------|-----------|----------|------|
| Classification | Development FAQ on XPAC | | | | No. | 5-031-00 | |
| Author | Weikai | Version | 1.0.0 | Date | 2011/4/11 | Page | 5/12 |

Step 5 In Solution Explorer, right-click the References node, and then click Add Reference....



Step 6 Select browse and add the XPacNet.dll

| | | | | | | | |
|----------------|-------------------------|---------|-------|------|-----------|----------|------|
| Classification | Development FAQ on XPAC | | | | No. | 5-031-00 | |
| Author | WeiKai | Version | 1.0.0 | Date | 2011/4/11 | Page | 6/12 |



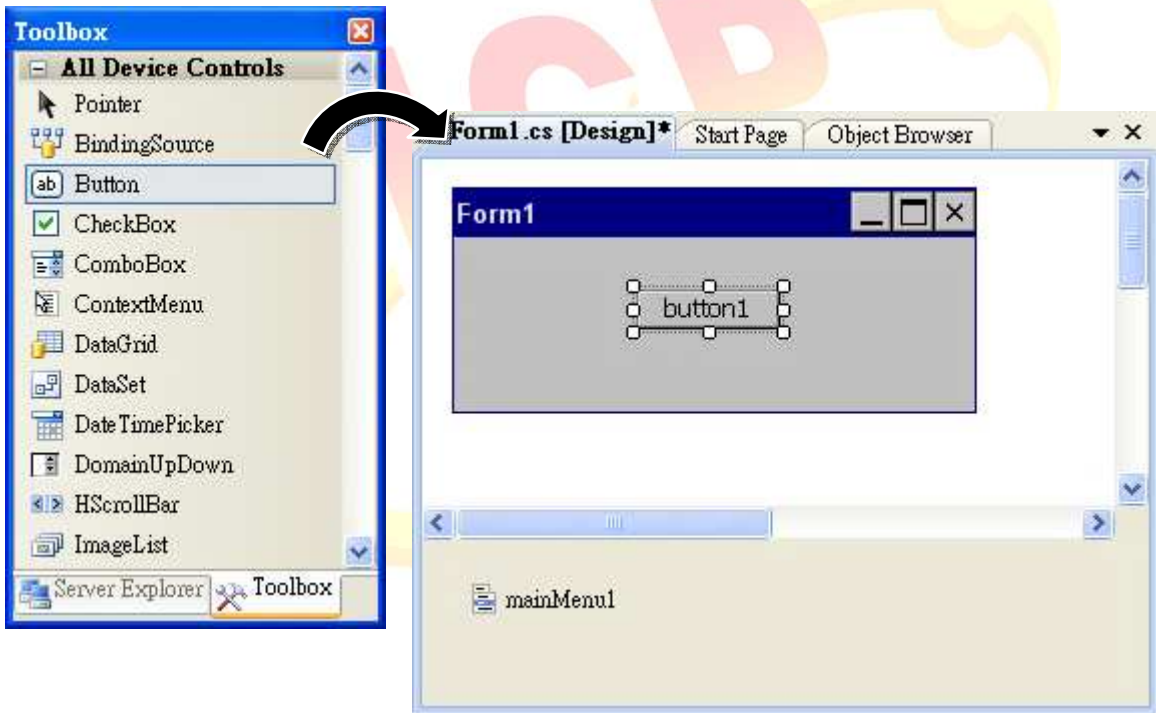
| | | | | | | | |
|----------------|-------------------------|---------|-------|------|-----------|----------|------|
| Classification | Development FAQ on XPAC | | | | No. | 5-031-00 | |
| Author | WeiKai | Version | 1.0.0 | Date | 2011/4/11 | Page | 7/12 |

Adding the Control to the Form

You can drag various controls from the Toolbox onto the form. These controls are not really "live"; they are just images that are convenient to move around on the form into a precise location.

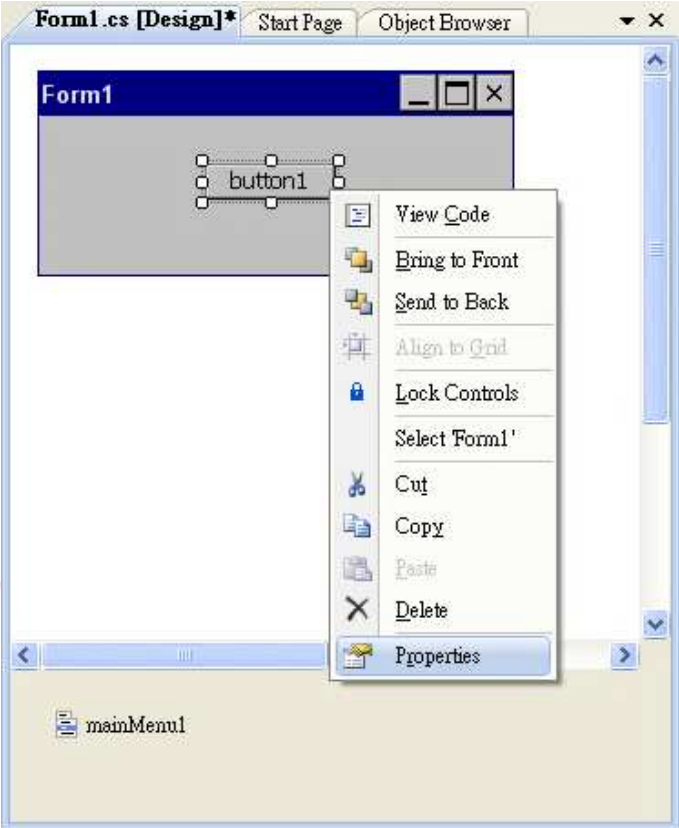
After you add a control to your form, you can use the Properties window to set its properties, such as background color and default text. The values that you specify in the Properties window are the initial values that will be assigned to that property when the control is created at run time.

Step 7 From the Toolbox, drag a Button control onto the form

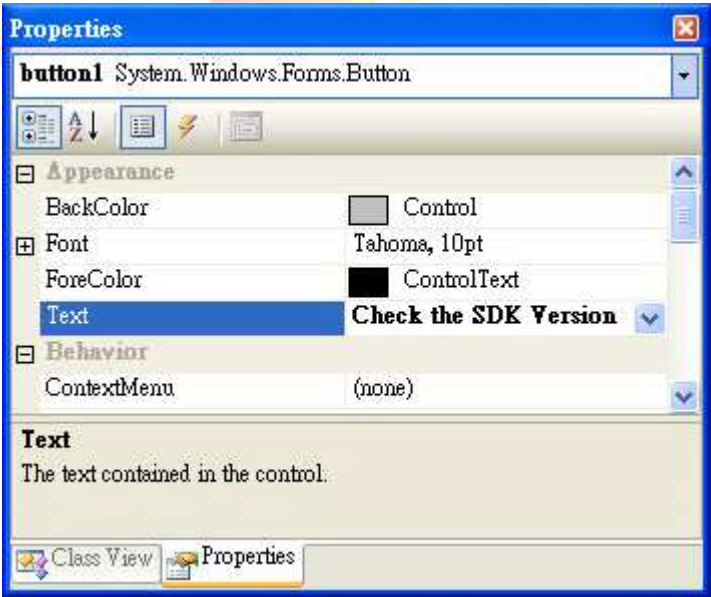


| | | | | | | | |
|----------------|-------------------------|---------|-------|------|-----------|----------|------|
| Classification | Development FAQ on XPAC | | | | No. | 5-031-00 | |
| Author | WeiKai | Version | 1.0.0 | Date | 2011/4/11 | Page | 8/12 |

Step 8 Right-click the Button control, and then click Properties



Step 9 In the Properties window, type Check the SDK version, and press ENTER to set the Text property



| | | | | | | | |
|----------------|-------------------------|---------|-------|------|-----------|----------|------|
| Classification | Development FAQ on XPAC | | | | No. | 5-031-00 | |
| Author | WeiKai | Version | 1.0.0 | Date | 2011/4/11 | Page | 9/12 |

Adding the Event Handling to the Control

You have finished the design stage of your application and are at the point when you can start adding some code to provide the program's functionality.

Step 10 Double-click the button on the form



| | | | | | | | |
|----------------|-------------------------|---------|-------|------|-----------|----------|-------|
| Classification | Development FAQ on XPAC | | | | No. | 5-031-00 | |
| Author | WeiKai | Version | 1.0.0 | Date | 2011/4/11 | Page | 10/12 |

Step 11 Inserting the following code

MessageBox.Show(XPacNET.XPac.pac_GetXPacSDKVersion());

```
namespace SDKInformation
{
    public partial class Form1 : Form
    {
        public Form1()
        {
            InitializeComponent();
        }

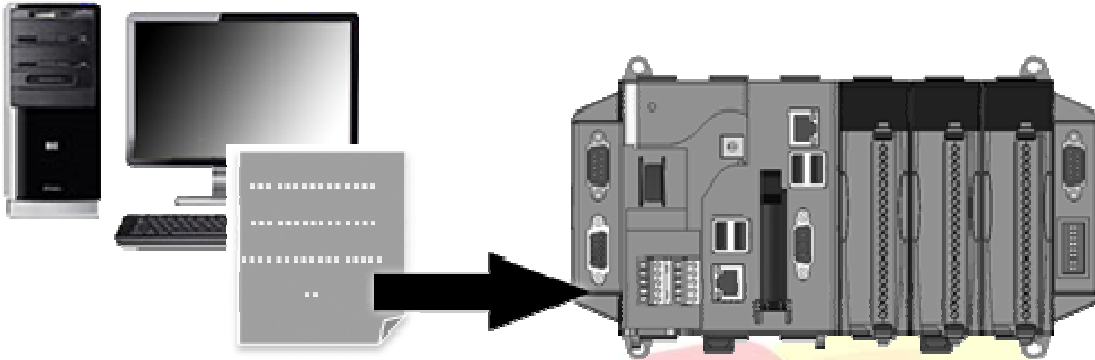
        private void button1_Click(object sender, EventArgs e)
        {
            MessageBox.Show(XPacNET.XPac.pac_GetXPacSDKVersion());
        }
    }
}
```



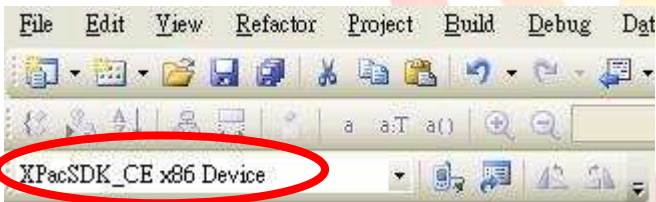
| | | | | | | | |
|----------------|-------------------------|---------|-------|------|-----------|----------|-------|
| Classification | Development FAQ on XPAC | | | | No. | 5-031-00 | |
| Author | WeiKai | Version | 1.0.0 | Date | 2011/4/11 | Page | 11/12 |

Uploading the Application to XPAC

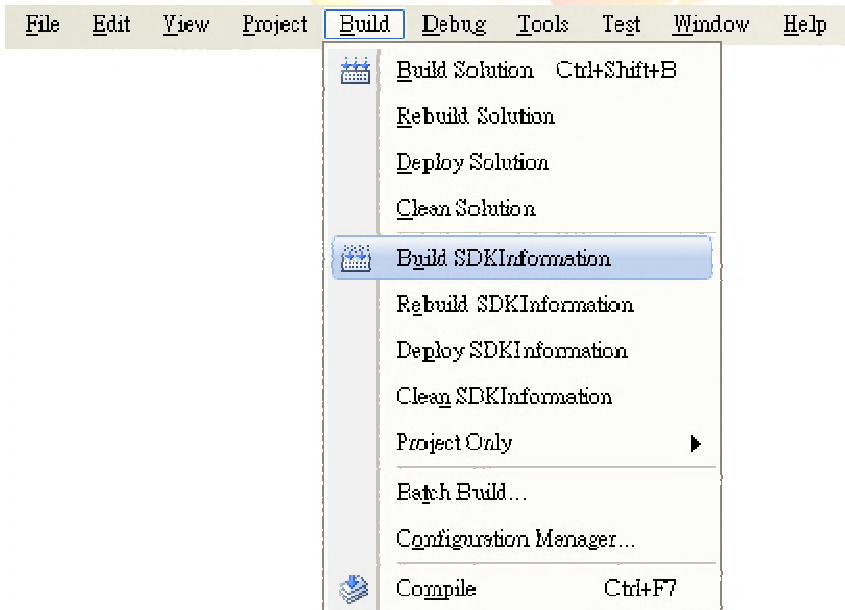
XPAC series provide FTP server service and you can upload files to XPAC or download files from a public FTP server.



Step 12 Select Platform device Select “XPacSDK_CE x86 Device”



Step 13 On the Build menu, click Build SDKInformation



| | | | | | | | |
|----------------|-------------------------|---------|-------|------|-----------|----------|-------|
| Classification | Development FAQ on XPAC | | | | No. | 5-031-00 | |
| Author | WeiKai | Version | 1.0.0 | Date | 2011/4/11 | Page | 12/12 |

Step 14 Open your ftp software and type the IP address of XPAC.

Step 15 Upload the SDKInformation.exe application and the corresponding XPacSDK_CE.dll file to the XPAC

Tips & Warnings



For applications programming in C# and VB.net with .net framework, when executing these application on the XPAC, the corresponding “XPacSDK_CE.dll” and “XPacNet.dll” file must be in the same directory as the .exe file.

