

Classification	Development FAQ on XPAC				No.	5-030-00	
Author	WeiKai	Version	1.0.0	Date	2011/4/11	Page	1/13

## How to write a MFC application with XPAC SDK in visual studio 2005

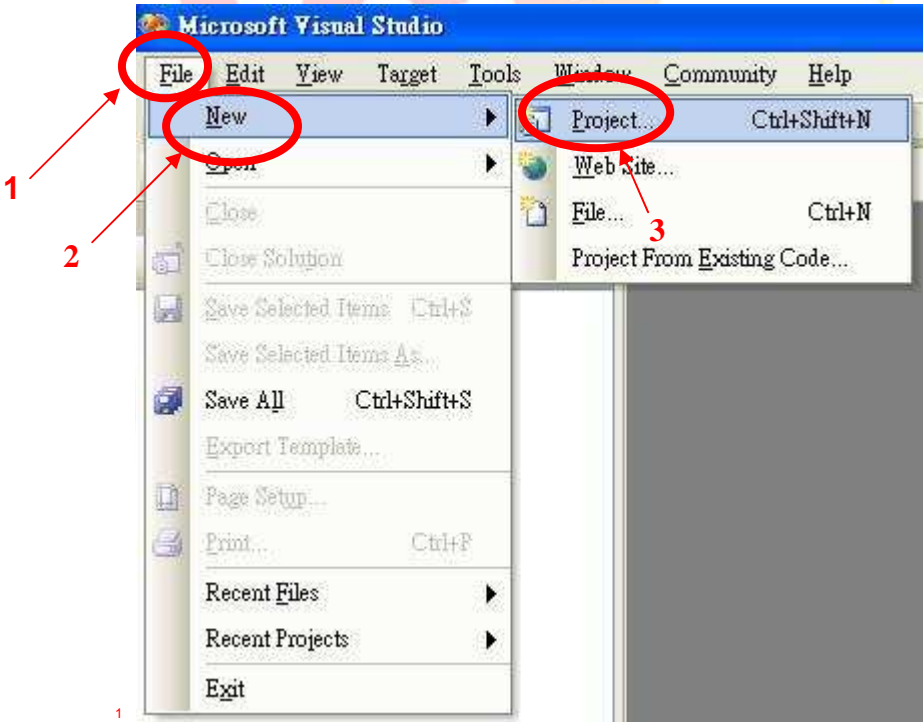
Applies to:

Platform	OS version	XPAC utility version
XPAC series	All versions (WinCE6)	All versions

The XPAC SDKs provides a complete solution to integrate with XPAC and compatible with Visual C#, Visual Basic .net and C++. In order to use a component in your application, you must first add a reference to it.

### Step 1 Create a new project

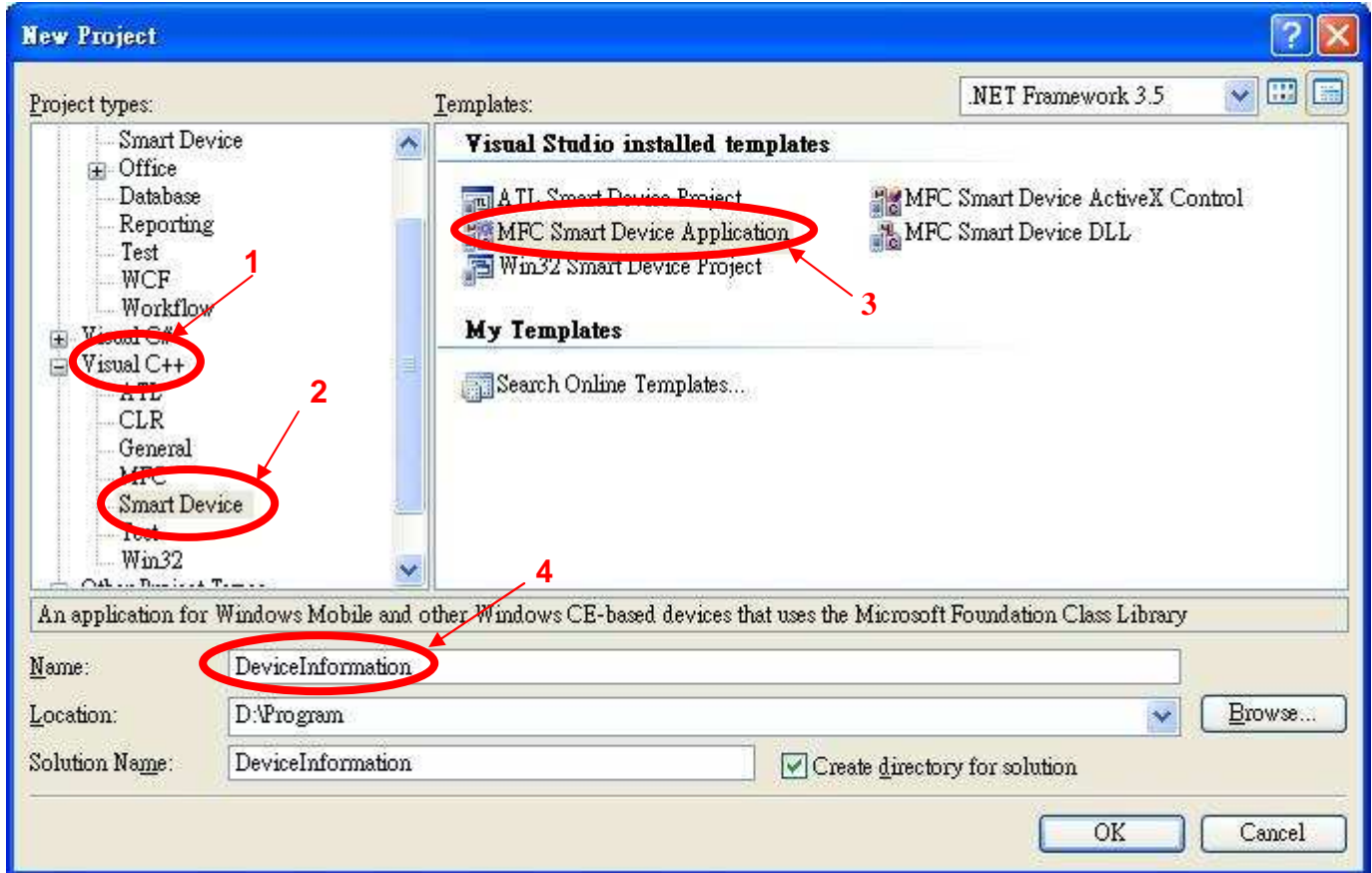
Click the File → New → Project in order as following.



Classification	Development FAQ on XPAC				No.	5-030-00	
Author	WeiKai	Version	1.0.0	Date	2011/4/11	Page	2/13

**Step 2 Perform the following steps in order**

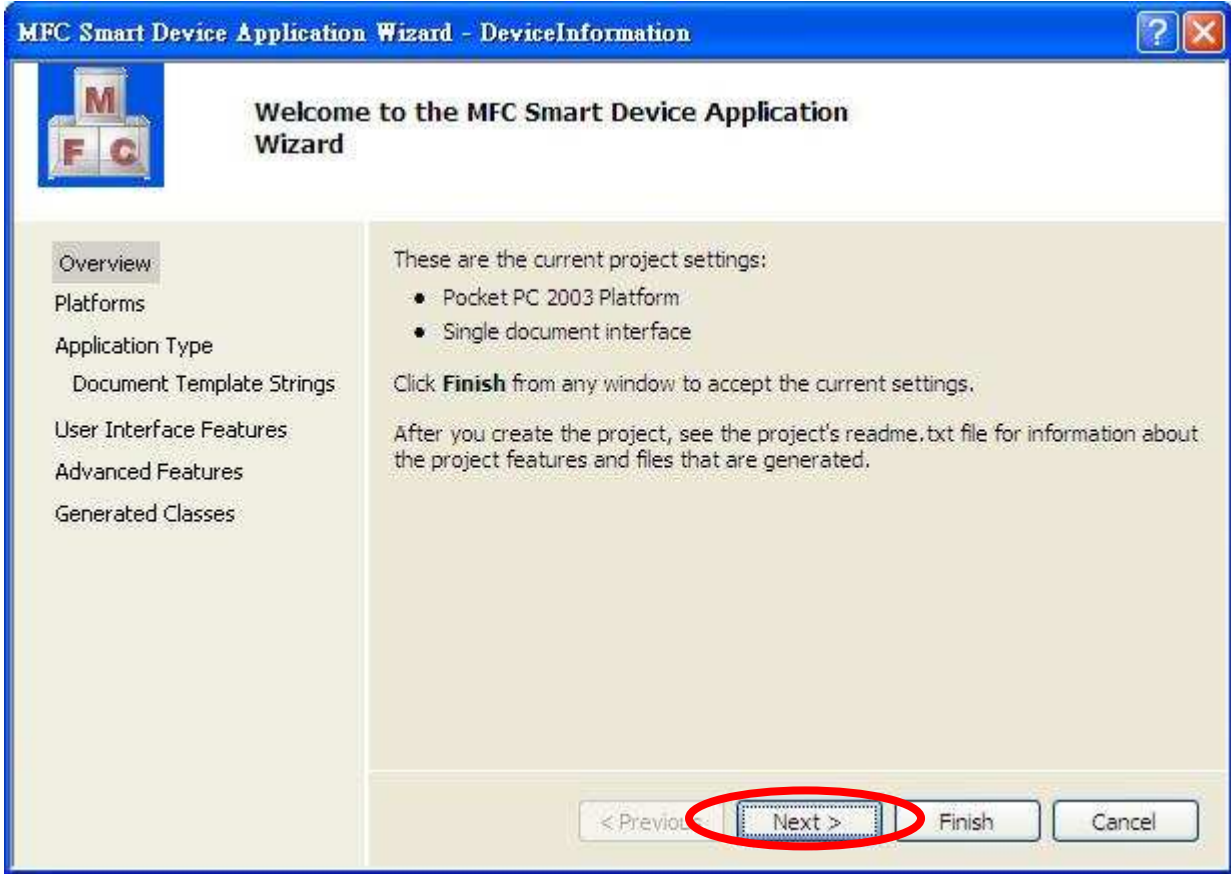
**Select “Visual C++” → “Smart Device” → “MFC Smart Device Application” and input your program name.**



Classification	Development FAQ on XPAC				No.	5-030-00	
Author	WeiKai	Version	1.0.0	Date	2011/4/11	Page	3/13

### Step 3 Program Setting

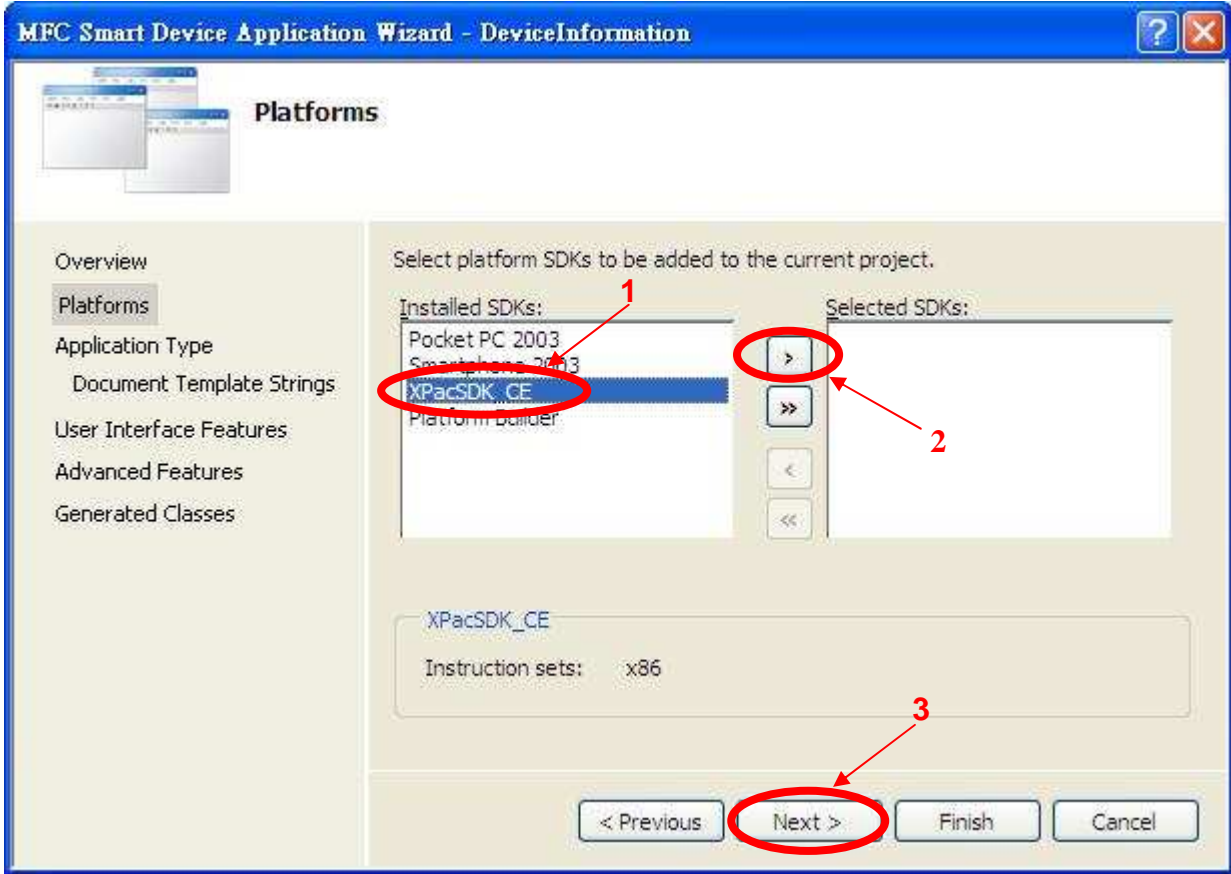
Click "Next"



Classification	Development FAQ on XPAC				No.	5-030-00	
Author	WeiKai	Version	1.0.0	Date	2011/4/11	Page	4/13

## Step 4 Select SDK

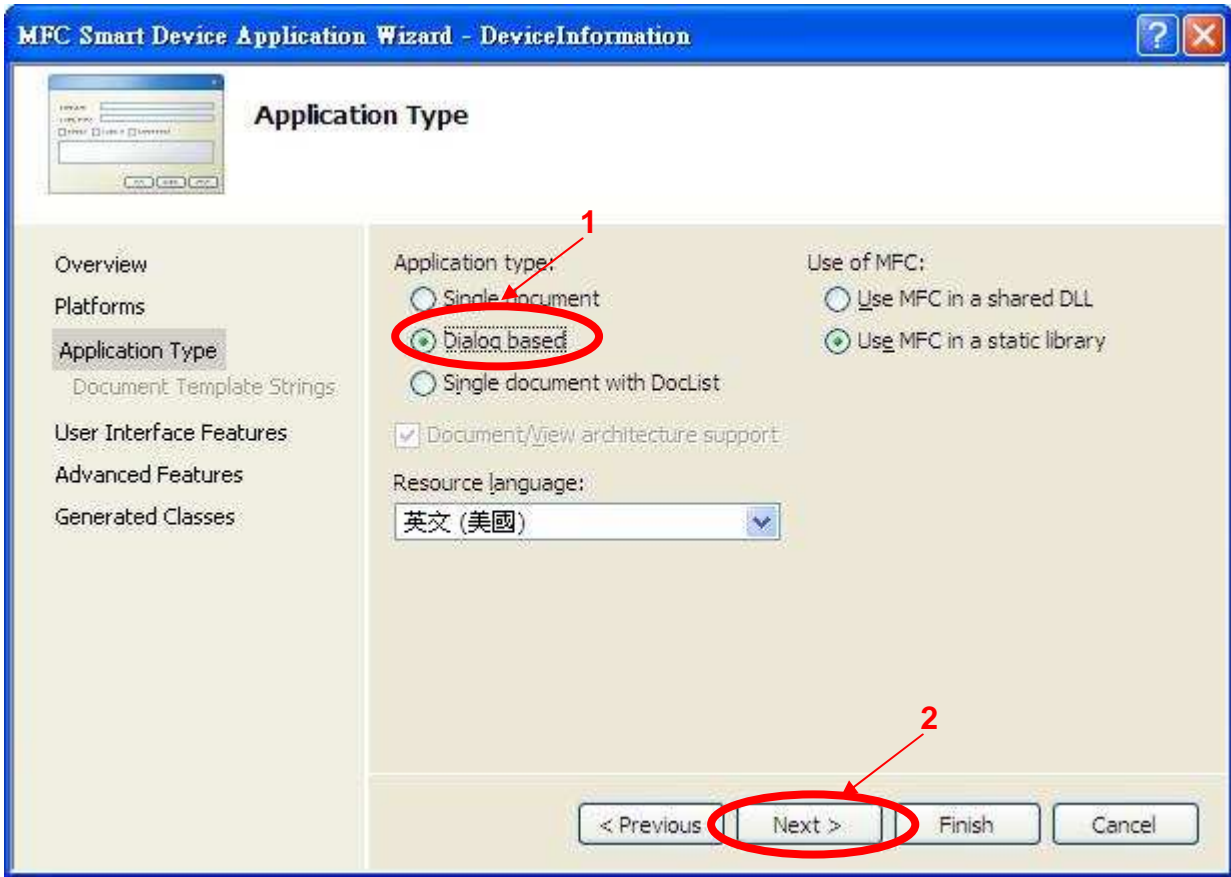
Select "XPacSDK\_CE" → Click ">" → Click "Next"



Classification	Development FAQ on XPAC				No.	5-030-00	
Author	WeiKai	Version	1.0.0	Date	2011/4/11	Page	5/13

## Step 5 Select Type

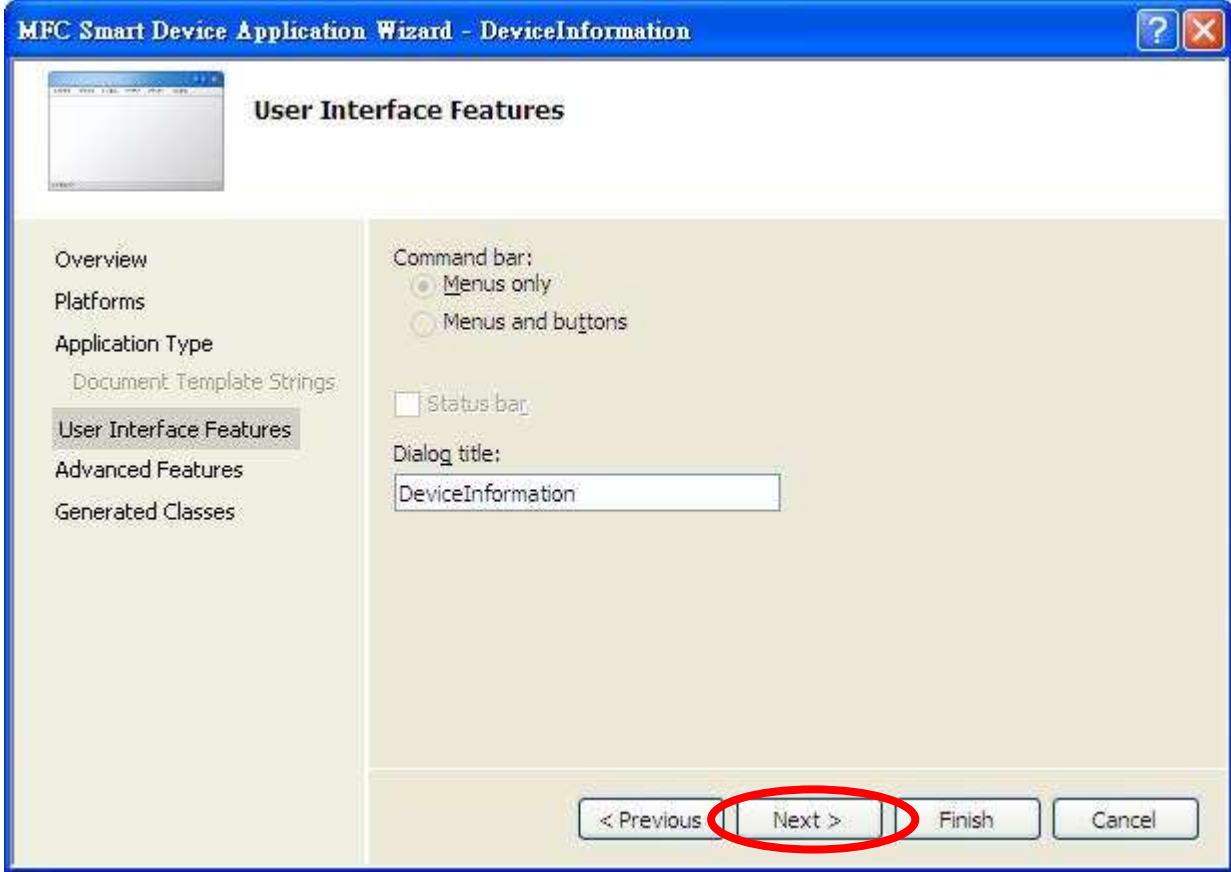
Select “Dialog based” → “Next”



Classification	Development FAQ on XPAC				No.	5-030-00	
Author	WeiKai	Version	1.0.0	Date	2011/4/11	Page	6/13

## Step 6 Application interface

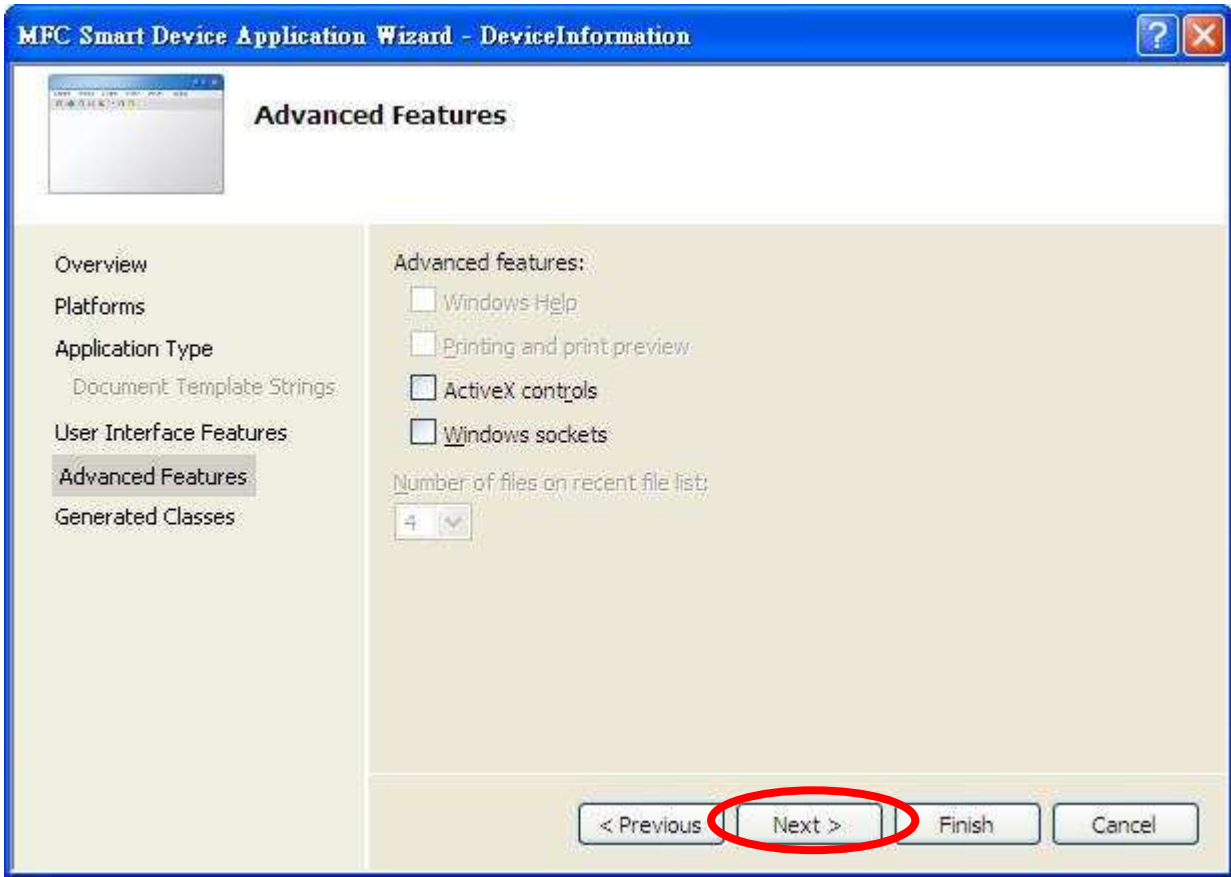
Click “Next”



Classification	Development FAQ on XPAC				No.	5-030-00	
Author	Weikai	Version	1.0.0	Date	2011/4/11	Page	7/13

## Step 7 Application Features

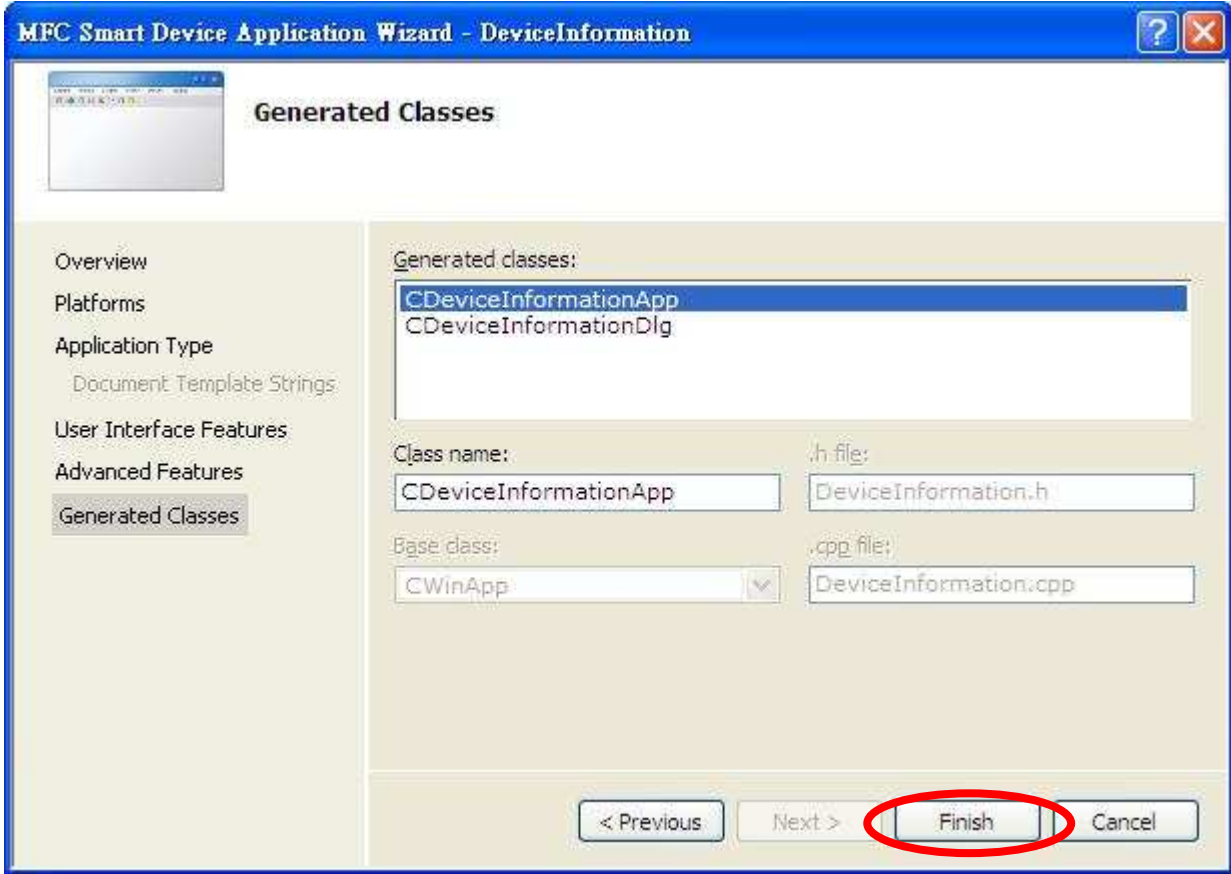
Click “Next”, If your program have using network. You must select “Windows sockets”.



Classification	Development FAQ on XPAC				No.	5-030-00	
Author	WeiKai	Version	1.0.0	Date	2011/4/11	Page	8/13

## Step 8 Generated Classes

Click “Finish”

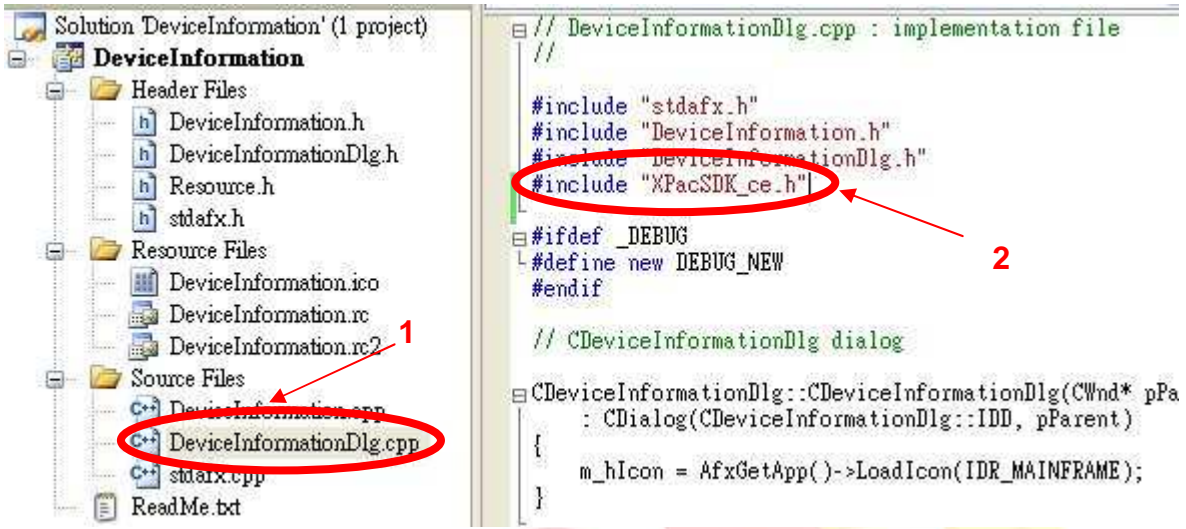




Classification	Development FAQ on XPAC				No.	5-030-00	
Author	WeiKai	Version	1.0.0	Date	2011/4/11	Page	9/13

**Step 9 Add “XPacSDK\_ce.h”**

Select “DeviceInformationDlg.cpp”, and then add #include “XPacSDK\_ce.h”



Classification	Development FAQ on XPAC				No.	5-030-00	
Author	WeiKai	Version	1.0.0	Date	2011/4/11	Page	10/13

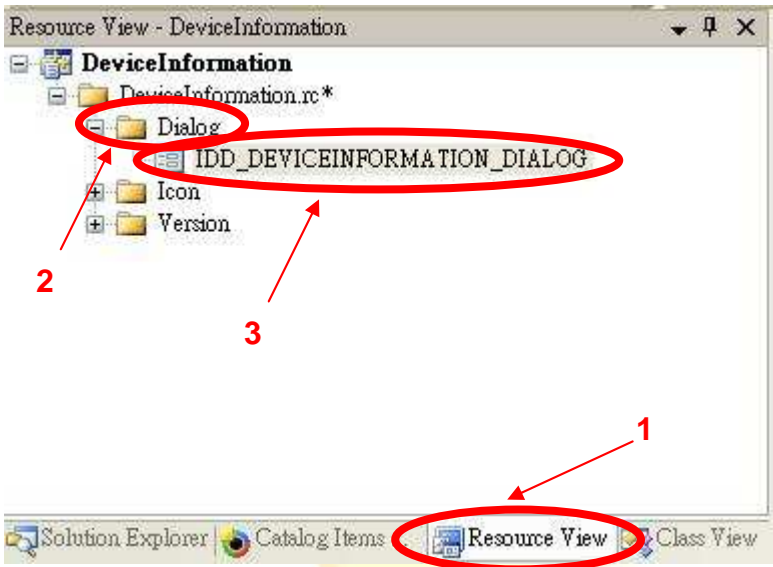
## Adding the Control to the Form

You can drag various controls from the Toolbox onto the dialog. These controls are not really "live"; they are just images that are convenient to move around on the form into a precise location.

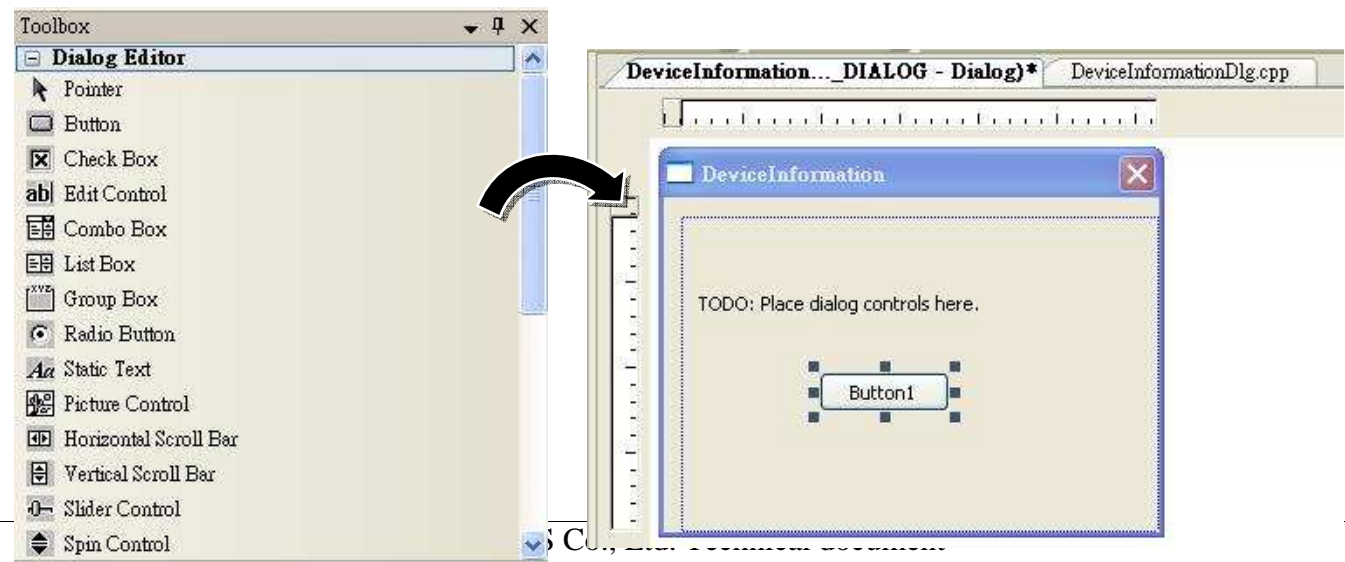
After you add a control to your form, you can use the Properties window to set its properties, such as background color and default text. The values that you specify in the Properties window are the initial values that will be assigned to that property when the control is created at run time.

### Step 1 Open Dialog

Click "Resource View" → "Dialog" → "IDD\_DEVICEINFORMATION\_DIALOG"

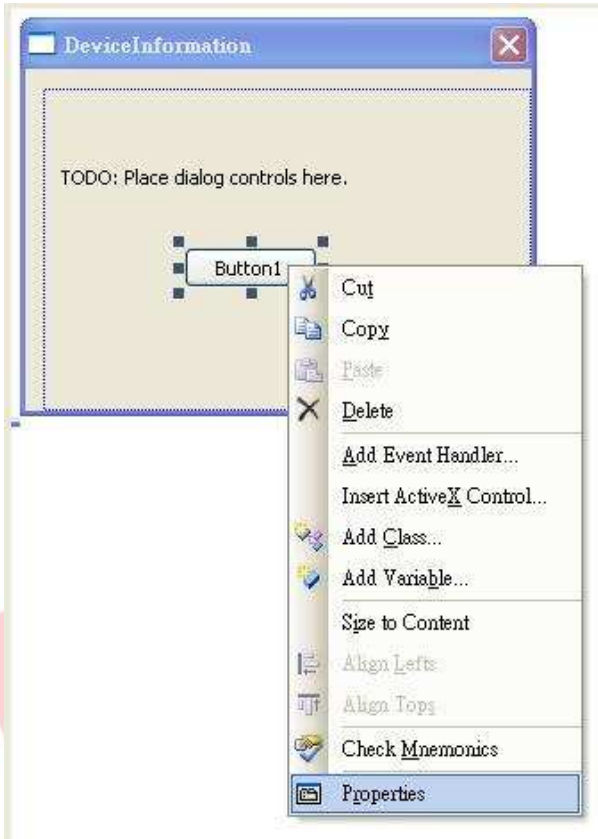


### Step 2 From the Toolbox, drag a Button control onto the Dialog

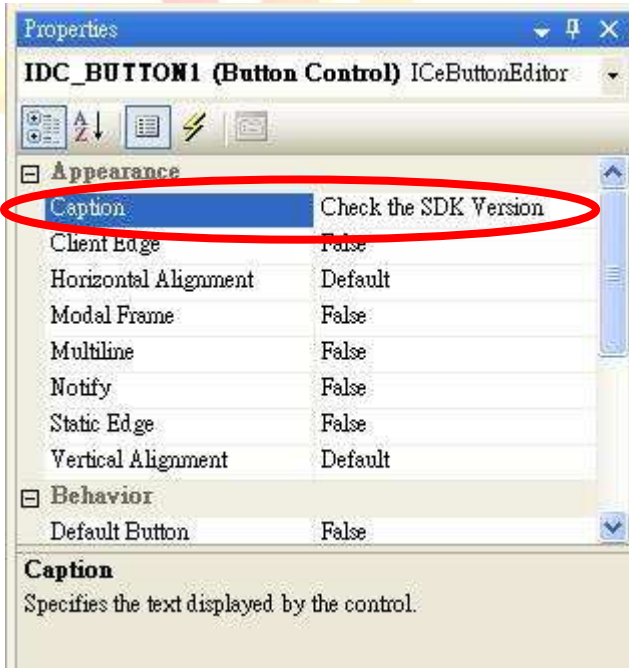


Classification	Development FAQ on XPAC				No.	5-030-00	
Author	WeiKai	Version	1.0.0	Date	2011/4/11	Page	11/13

**Step 3 Right-click the Button control, and then click Properties**



**Step 4 In the Properties window, type Check the SDK version, and press ENTER to set the Caption property**



Classification	Development FAQ on XPAC				No.	5-030-00	
Author	WeiKai	Version	1.0.0	Date	2011/4/11	Page	12/13

## Adding the Event Handling to the Control

You have finished the design stage of your application and are at the point when you can start adding some code to provide the program's functionality.

### Step 5 Double-click the button on the Dialog



### Step 6 Inserting the following code

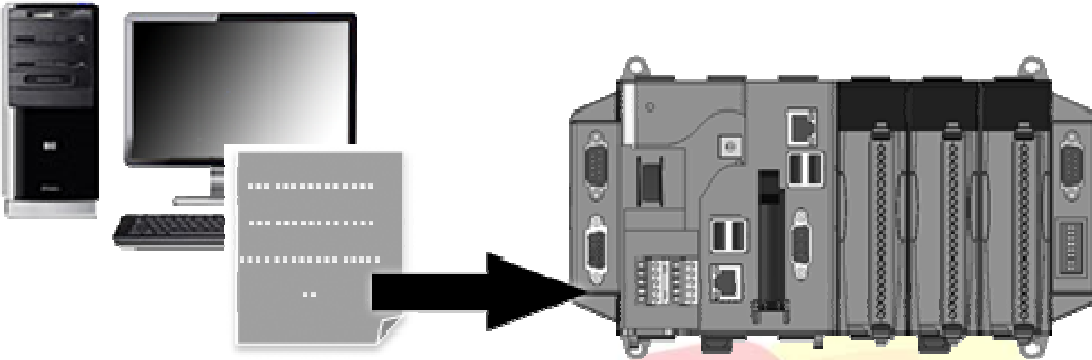
```
char temp[100];
TCHAR SDK[100];
pac_GetSDKVersion(temp);
wprintf(SDK,L"%S",temp);
::MessageBox(NULL,SDK,NULL,MB_OK);
```

```
void CDeviceInformationDlg::OnBnClickedButton1()
{
    // TODO: Add your control notification handler code here
    char temp[100];
    TCHAR SDK[100];
    pac_GetSDKVersion(temp);
    wprintf(SDK,L"%S",temp);
    ::MessageBox(NULL,SDK,NULL,MB_OK);
}
```

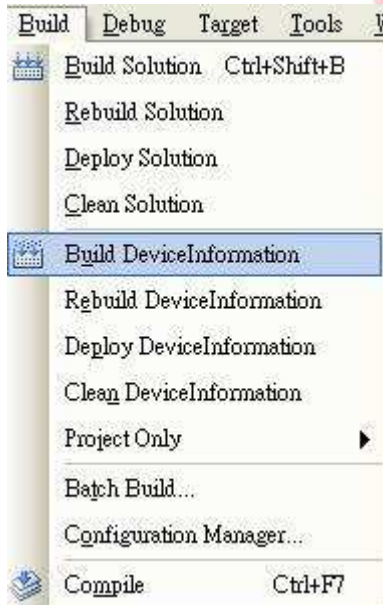
Classification	Development FAQ on XPAC				No.	5-030-00	
Author	WeiKai	Version	1.0.0	Date	2011/4/11	Page	13/13

## Uploading the Application to XPAC

XPAC series provide FTP server service and you can upload files to XPAC or download files from a public FTP server.



### Step 7 On the Build menu, click Build DeviceInformation



### Step 8 Open your ftp software and type the IP address of XPAC.

### Step 9 Upload the SDKInformation.exe application and the corresponding XPacSDK\_CE.dll file to the XPAC