

VB.net 2005 Demo program using Modbus TCP/IP protocol to control ISaGRAF controllers.

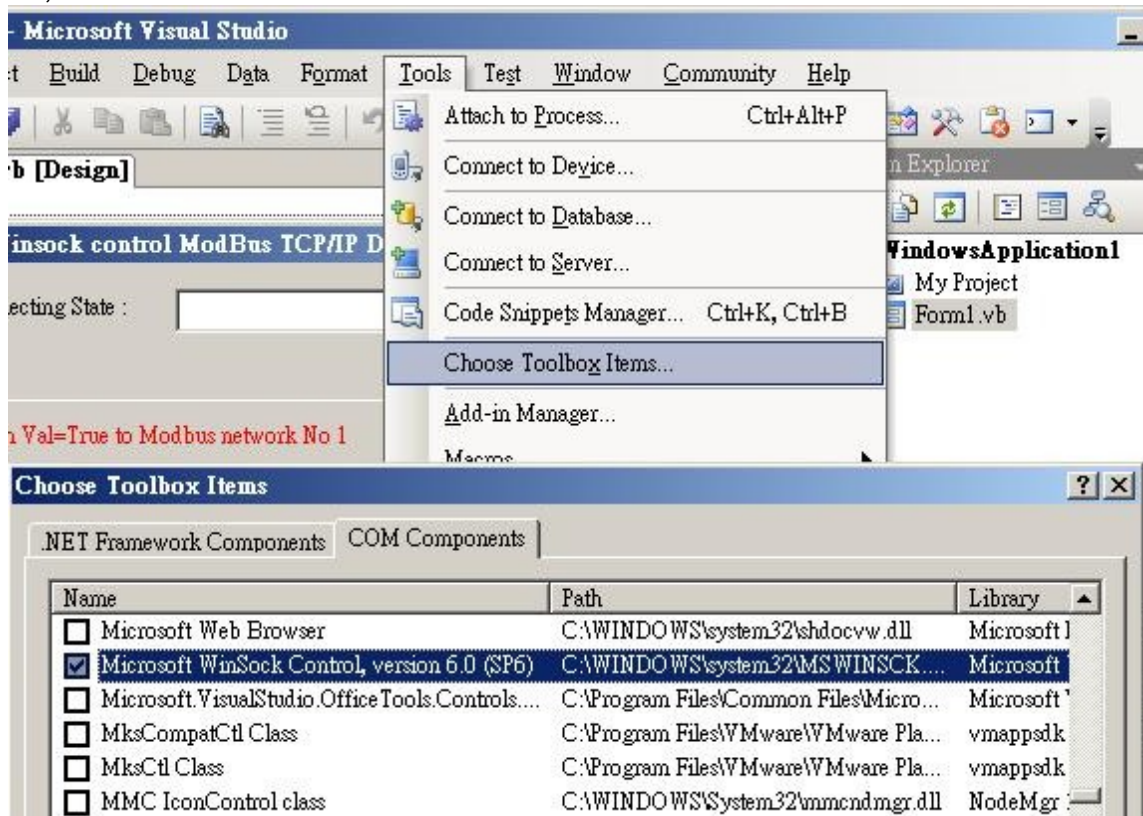
Below ICP DAS ISaGRAF controllers support Modbus TCP/IP slave protocol.

<http://www.icpdas.com/products/PAC/i-8000/data%20sheet/data%20sheet.htm>

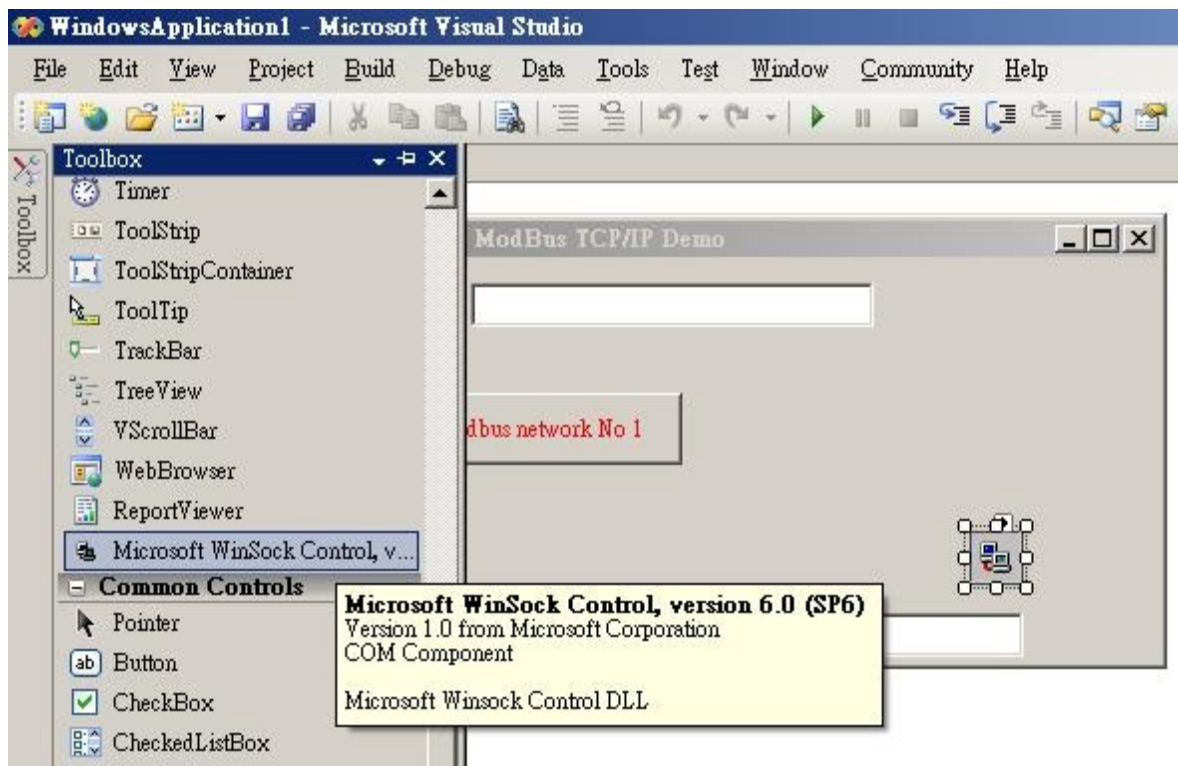
Wincon-8xx7, Wincon-8xx6
WP-8xx7, WP-8xx6
VP-25W7, VP-23W7, VP-25W6, VP-23W6
XP-8xx7-CE6, XP-8xx6-CE6
WP-5xx7
I-7188EG
uP-7186EG
I-8437-80, I-8837-80
iP-8xx7

PC with VS.net 2005 frame work installed can run this “MBTCP_demo” VB.net 2005 demo program to access to the above ICP DAS controllers .

1. Please set a proper IP to your controller and make sure your PC's IP is in the same IP domain as the controller.
2. Please download “Wdemo_48” IsaGRAF project to your IsaGRAF controller. The “Wdemo_48” IsaGRAF program and “MBTCP_demo” VB.net 2005 demo program can be download at www.icpdas.com – FAQ – Software – IsaGRAF - FAQ051
3. Please run “Tools” - “Choose Toolbox Items” to check the “Microsoft Winsock Control, ...” to insert the Winsock control.



4. Then add one Winsock control to your VB.net 2005 's form1



5. Modify the IP to your controller's IP in "form1" program, For example:

`AxWinsock1.RemoteHost = "10.0.0.103"`

6. Re-built this VB.net 2005 demo project & run it.