

Classification	System and Application FAQ on XPAC				No.	2-001-00	
Author	WeiKai	Version	1.0.0	Date	2011/3/21	Page	1/9

How to use a remote desktop tool (VCEP)

Applies to:

<i>Platform</i>	<i>OS version</i>	<i>XPAC utility version</i>
<i>XPAC series</i>	<i>All versions (WinCE6)</i>	<i>All versions</i>

The ICPDAS VCEP is designed to help you manage your XPAC for any location. No matter where you are, the ICPDAS VCEP provides a convenient environment on your Desktop PC that allows you to remotely control your XPAC.



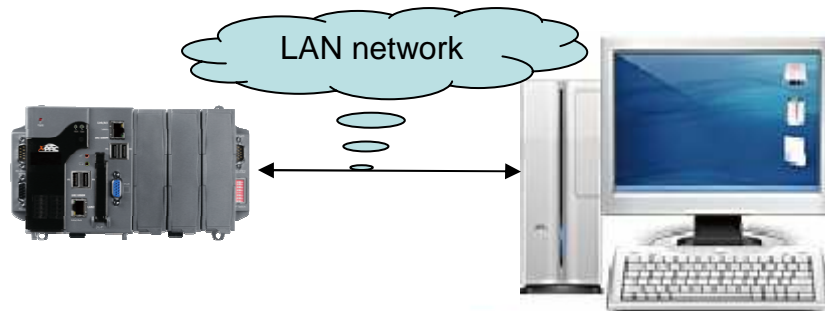
For more detailed information on VCEP applications, please refer to:
http://www.icpdas.com/products/PAC/wincon-8000/wincon_VirtualCE.htm

Classification	System and Application FAQ on XPAC				No.	2-001-00	
Author	WeiKai	Version	1.0.0	Date	2011/3/21	Page	2/9

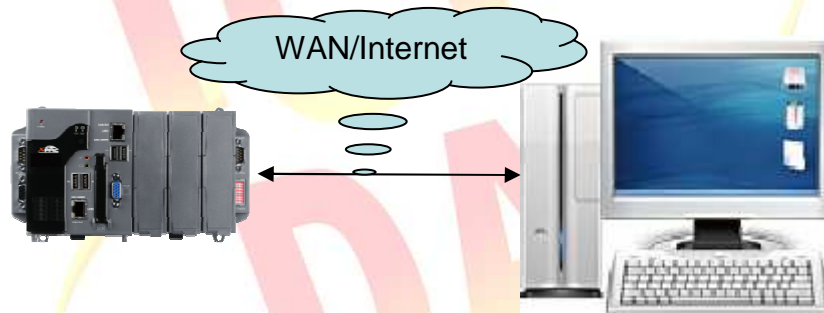
The VCEP can execute manually or automatically.

1. Executing the VCEP manually

If the XPAC and the PC are connected using DHCP or a static IP via the **LAN network**, refer to **page 3**.



If the XPAC and the PC are connected using DHCP or a static IP via the **WAN/internet**, refer to **page 7**.



Executing the VCEP manually

(The XPAC and the PC are connected using DHCP or a static IP via the **LAN network**)

To use the VCEP, perform the following steps:

From the XPAC Side

Step 1: Double click v_remote.exe from the “\System_disk\Tools\VCEP” folder

Name	Size	Type	Date Modified
pc		File Folder	3/17/2011 12:49 AM
v_remote	85KB	Application	3/17/2011 12:47 AM
WatchVCEP	3.50KB	Application	3/17/2011 12:47 AM

Classification	System and Application FAQ on XPAC				No.	2-001-00	
Author	WeiKai	Version	1.0.0	Date	2011/3/21	Page	3/9

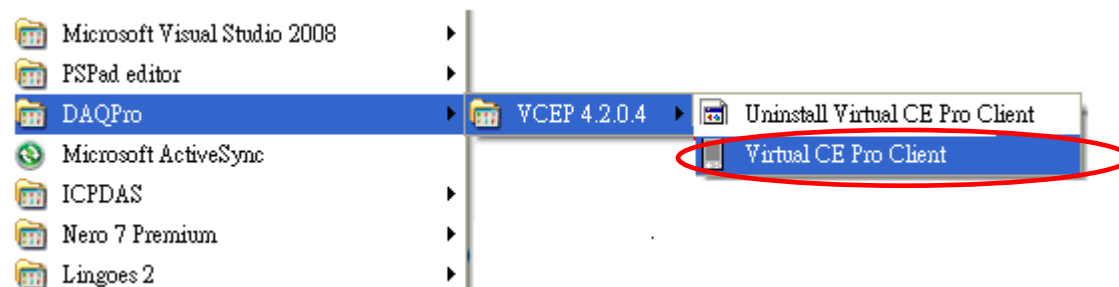
From the PC Side

Step 2: Install the VCEP Client on your host PC.

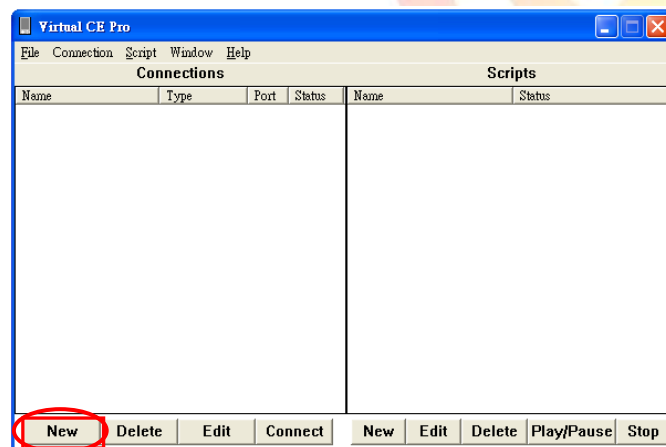
The “vcep_4.2.0.7.exe” file is located at

1. CD:\PC_Tools\VCEP
2. ftp://ftp.icpdas.com/pub/cd/xp-8000-ce6/pc_tools/vcep/ (XP-8000-CE6)
ftp://ftp.icpdas.com/pub/cd/xpac-atom-ce6/pc_tools/vcep/ (XP-8000-Atom-CE6)

Step 3: Run the “Virtual CE Pro Client”



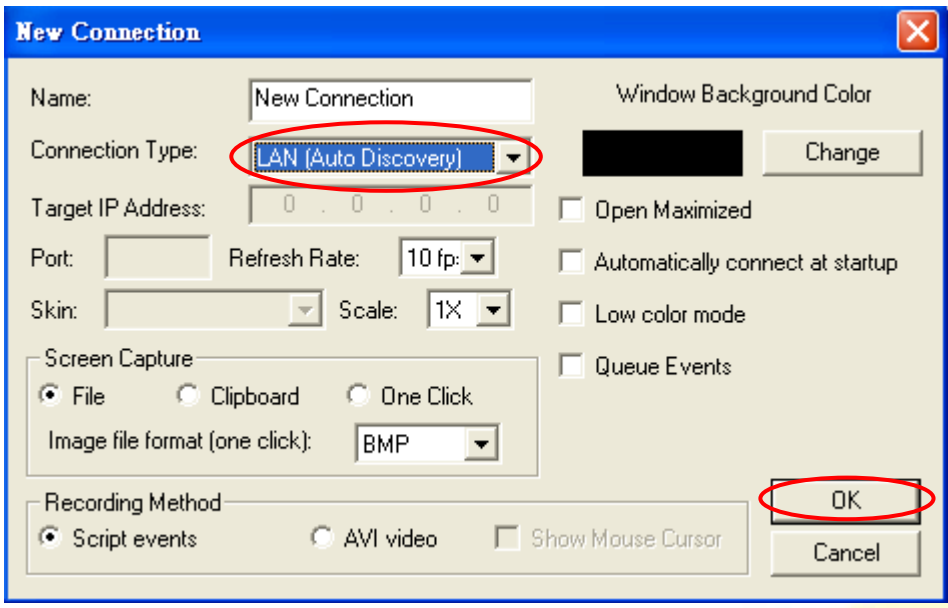
Step 4: Click the “new” button to add a new connection.



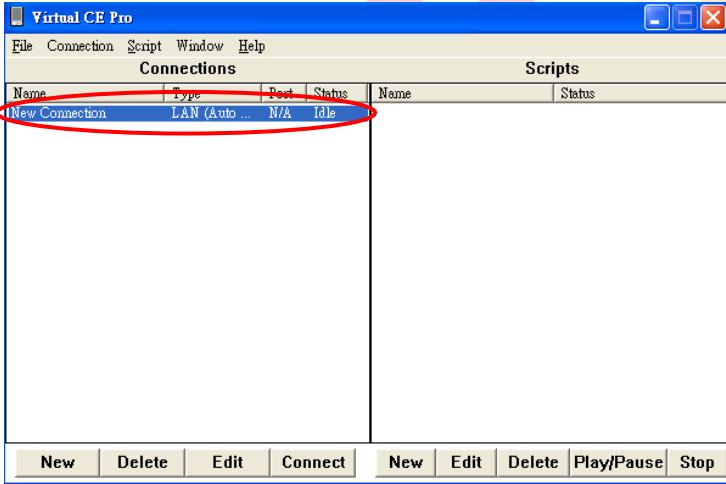
Step 5: Enter a name in the “Name” textbox and choose the “LAN (Auto Discovery)” item from the “Connection Type” comboBox.

5.1. Click the “OK” button.

Classification	System and Application FAQ on XPAC				No.	2-001-00	
Author	Weikai	Version	1.0.0	Date	2011/3/21	Page	4/9



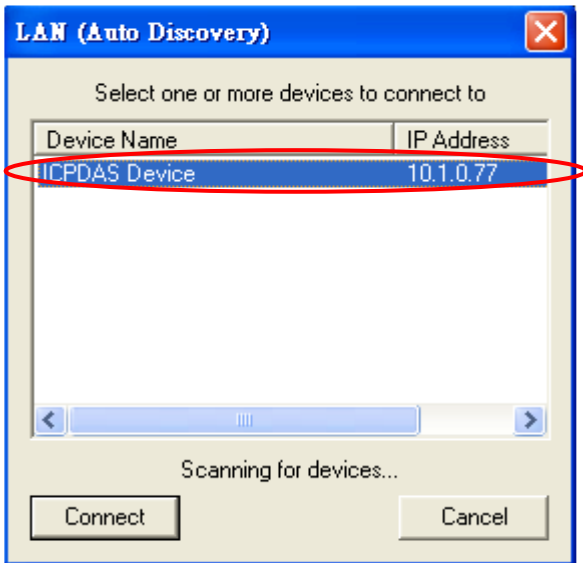
Step 6: A new connection will be added to the “Connections” List as show below.



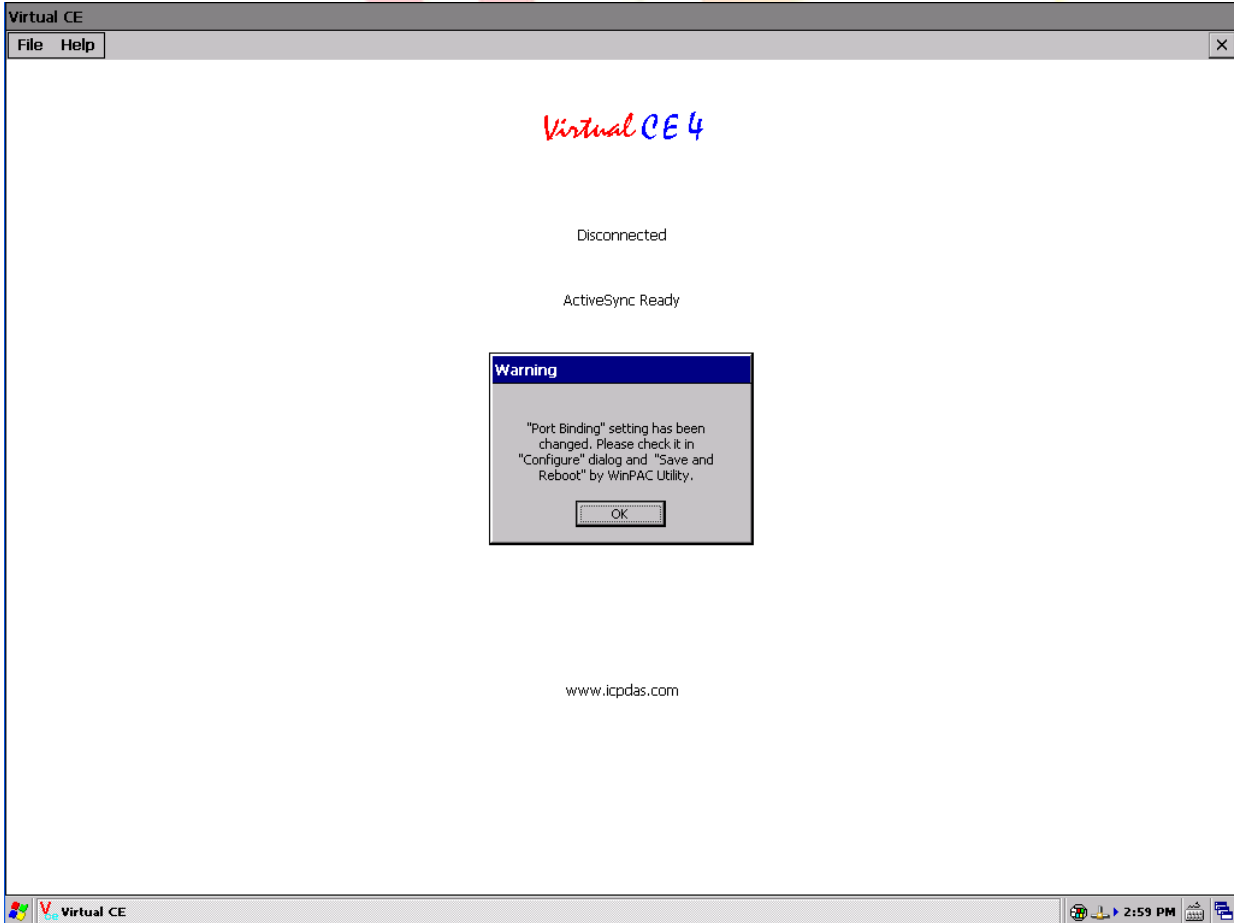
Step 7: Double click the “New connection” item in the “Connections” List, and the VCEP client program will scan the devices on the LAN.

Step 8: The XPAC device running the v_remote.exe program will be searched and added to the device list.

Classification	System and Application FAQ on XPAC				No.	2-001-00	
Author	WeiKai	Version	1.0.0	Date	2011/3/21	Page	5/9



Step 9: Double click the searched device (such as the example above, ICPDAS Device with the IP Address 10.1.0.77), and the Windows CE desktop on the device named "ICPDAS Device" will be displayed on the Host PC.



Classification	System and Application FAQ on XPAC					No.	2-001-00
Author	WeiKai	Version	1.0.0	Date	2011/3/21	Page	6/9

Executing the VCEP manually

(The XPAC and the PC are connected using DHCP or a static IP via the **WAN/internet**)

To use the VCEP, perform the following steps:

From the XPAC Side

Step 1: Double click v_remote.exe from the “\System_disk\Tools\VCEP” folder

Name	Size	Type	Date Modified
pc		File Folder	3/17/2011 12:49 AM
v_remote	85KB	Application	3/17/2011 12:47 AM
WatchVCEP	3.50KB	Application	3/17/2011 12:47 AM

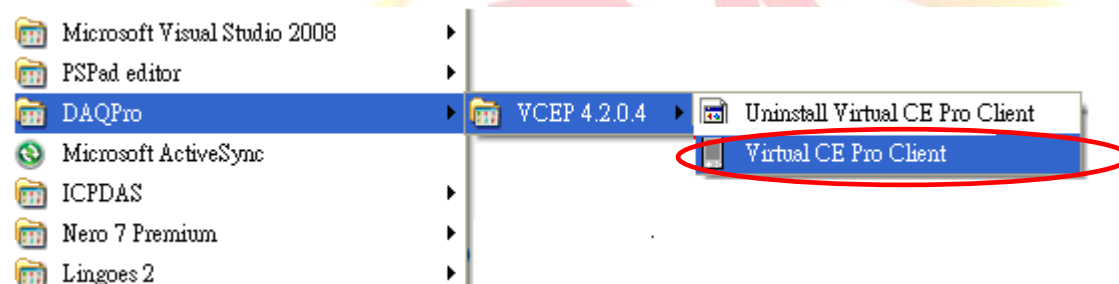
From the PC Side

Step 2: Install the VCEP Client on your host PC.

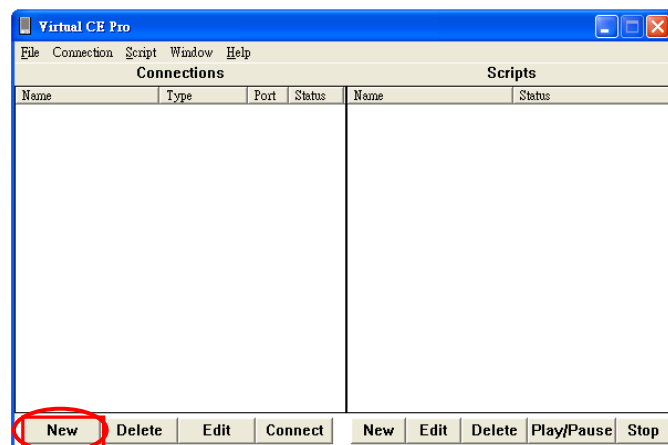
The “vcep_4.2.0.7.exe” file is located at

1. [CD:\PC_Tools\VCEP](file://CD:\PC_Tools\VCEP)
2. ftp://ftp.icpdas.com/pub/cd/xp-8000-ce6/pc_tools/vcep/ (XP-8000-CE6)
ftp://ftp.icpdas.com/pub/cd/xpac-atom-ce6/pc_tools/vcep/ (XP-8000-Atom-CE6)

Step 3: Run the “Virtual CE Pro Client”



Step 4: Click the “new” button to add a new connection.

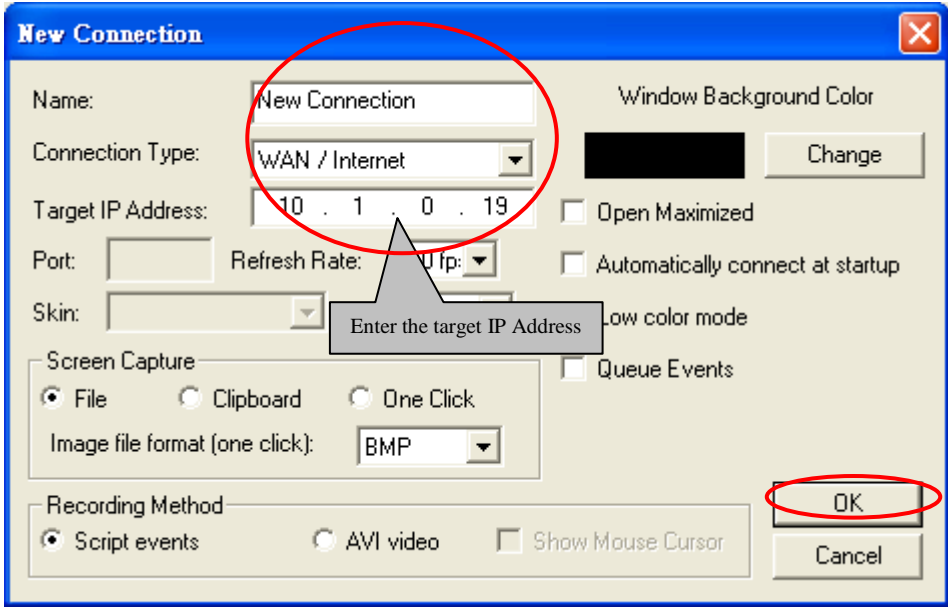


Classification	System and Application FAQ on XPAC				No.	2-001-00	
Author	WeiKai	Version	1.0.0	Date	2011/3/21	Page	7/9

WAN / Internet

Step 5: Enter a name in the “Name” textbox and choose the “WAN / Internet” item from the “Connection Type” comboBox, then enter the IP address in the “Target IP Address” address box.

5.1. Click the “OK” button.

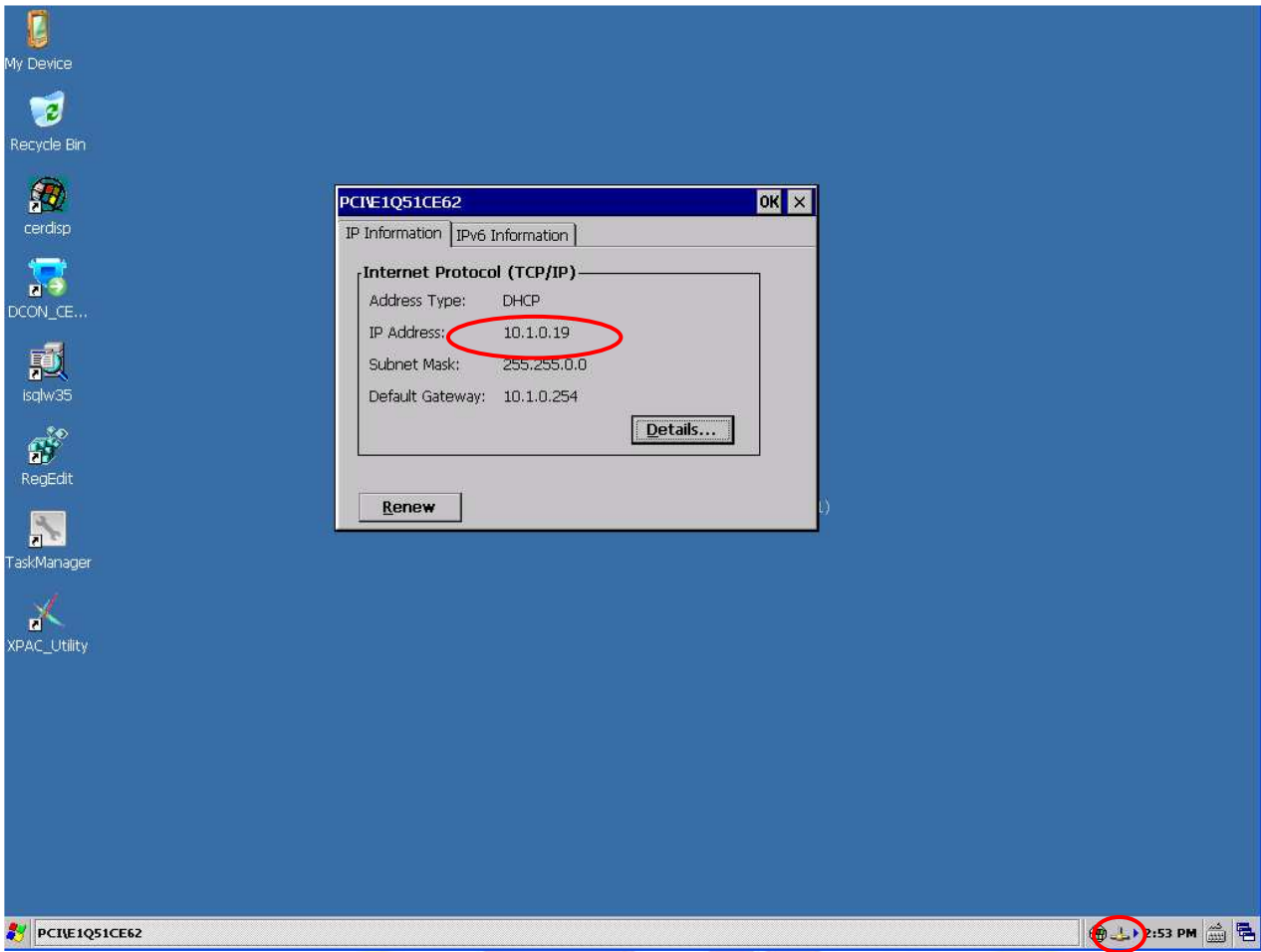


Tips & Warnings

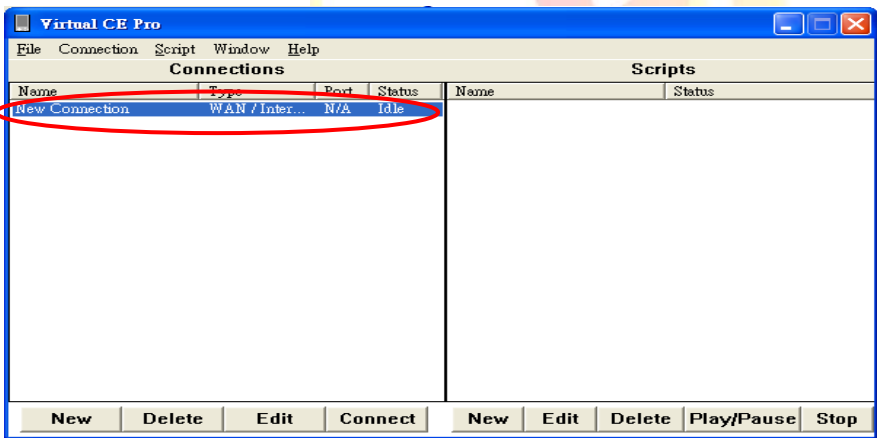


Click the connection icon on the task bar to obtain the IP Address of this XPAC device.

Classification	System and Application FAQ on XPAC				No.	2-001-00	
Author	Weikai	Version	1.0.0	Date	2011/3/21	Page	8/9

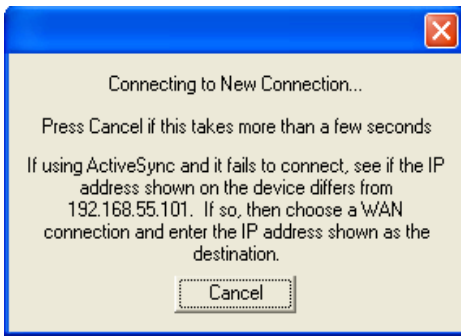


Step 6: Double click “New connection”.



Step 7: Wait few seconds for a connection to be established. (Don't click the “Cancel” button.)

Classification	System and Application FAQ on XPAC				No.	2-001-00	
Author	WeiKai	Version	1.0.0	Date	2011/3/21	Page	9/9



Step 8: If the Connection is successful, you will see the XPAC Desktop will be displayed on the Host PC.

