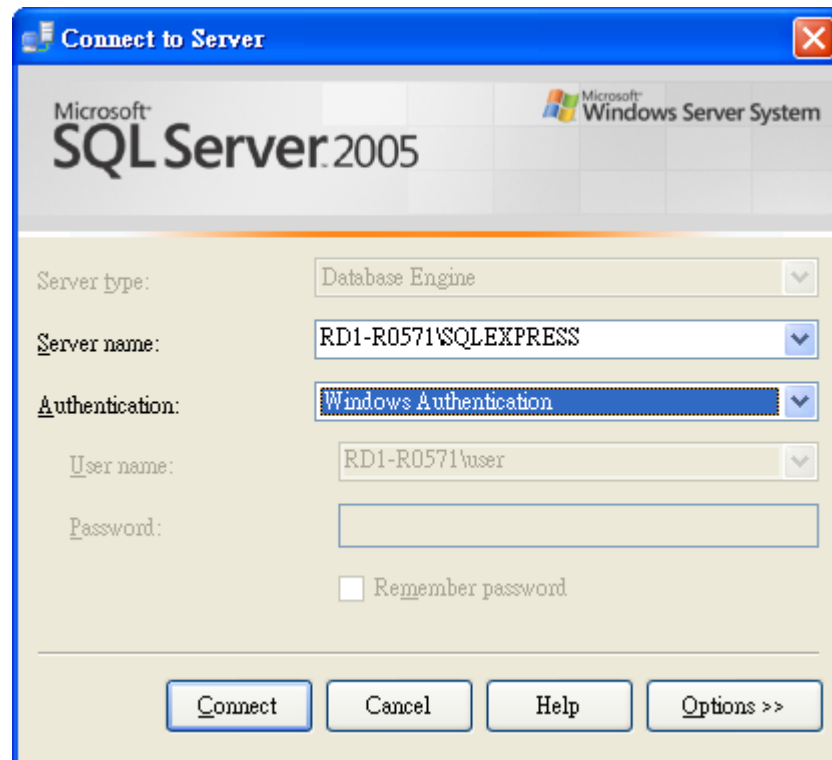


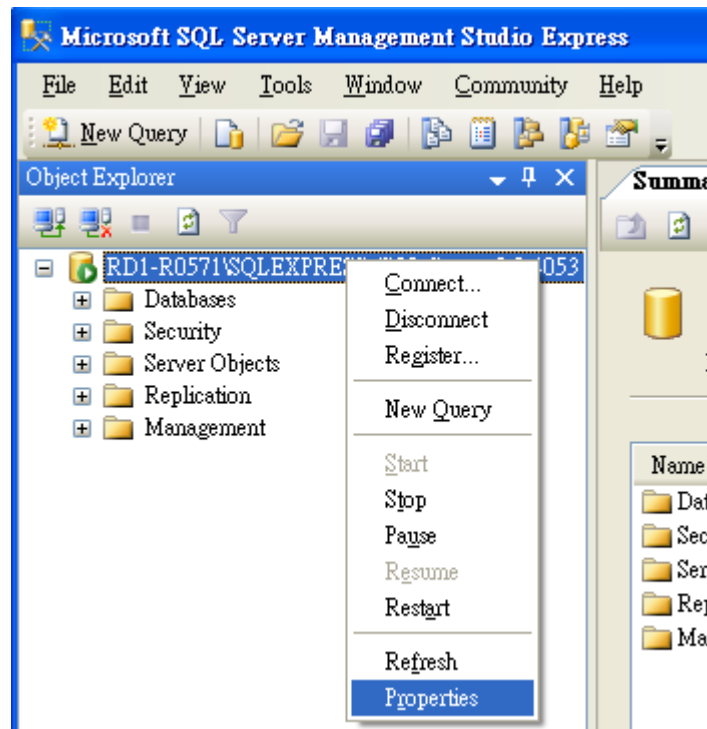
## Login SQL Server 2005 by both SQL Server Authentication and Windows Authentication

Step1. Click [Start], point to [Programs], point to [Microsoft SQL Server 2005], and then click [SQL Server Management Studio Express].

Step2. Login SQL Server2005 with [windows authentication]



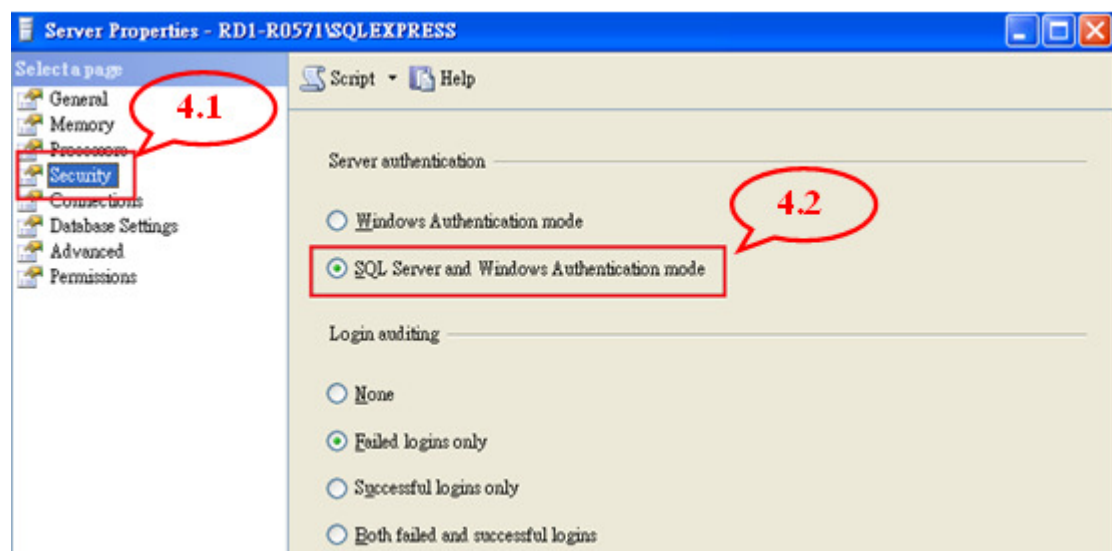
Step3. Right-click the main database (host name \SQLEXPRESS) to select [Properties]



Step4. On the page [Server Properties]

4.1 Select [Security] Options.

4.2 In the [Server authentication] select [SQL Server and Windows Authentication mode] and then click [OK].

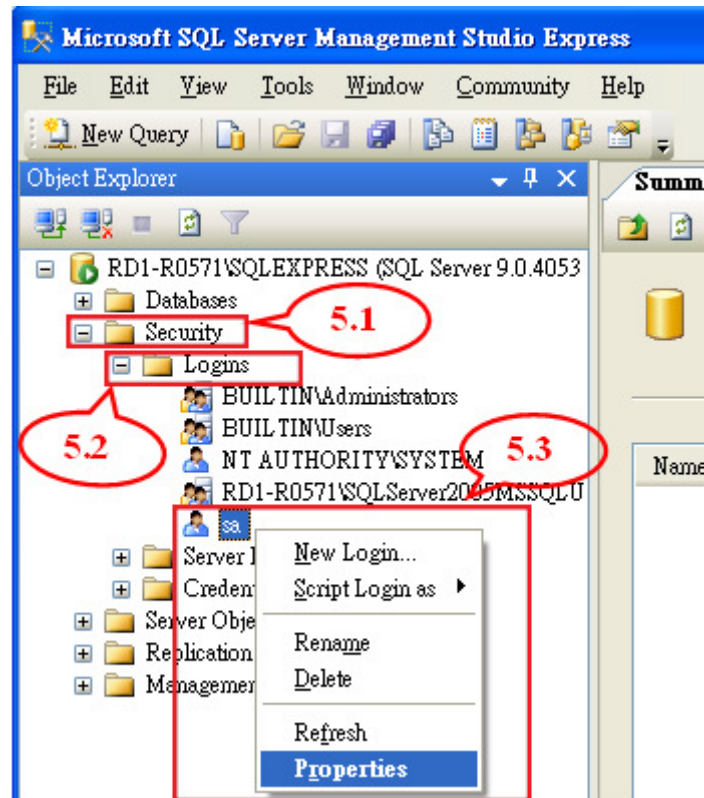


Step5. On the page [Object Explorer]

5.1 Expand [Security] option

5.2 Expand [Logins] option and you'll see your all accounts

5.3 Right-Click the account : [sa], and then select [Properties] option

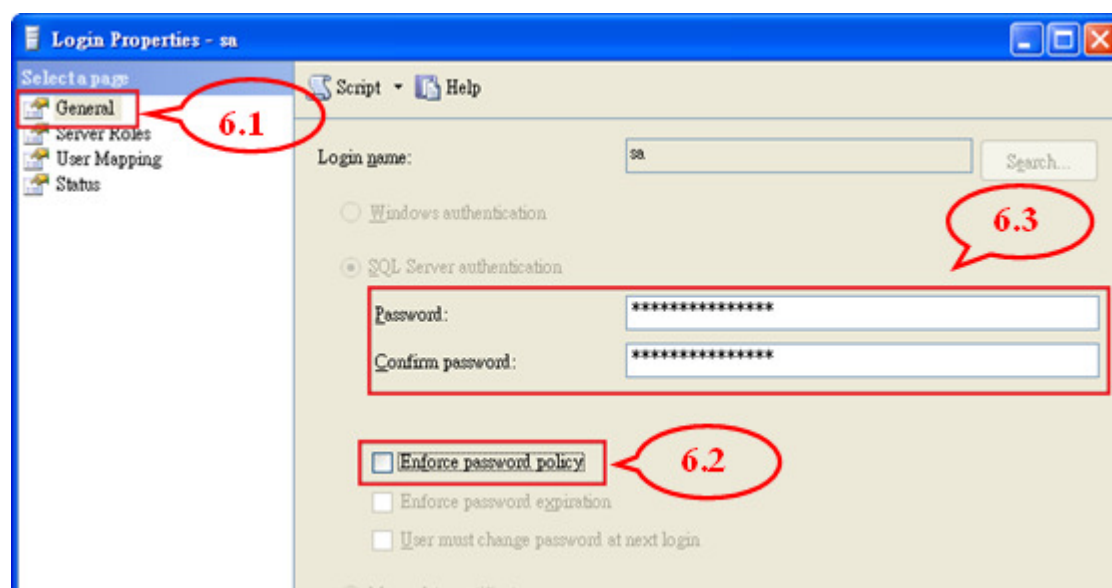


Step6. On the page [Login Properties - sa]

6.1 Select [General].

6.2 Change password by cancel the selection : [Enforce password policy].

6.3 Input your new password.

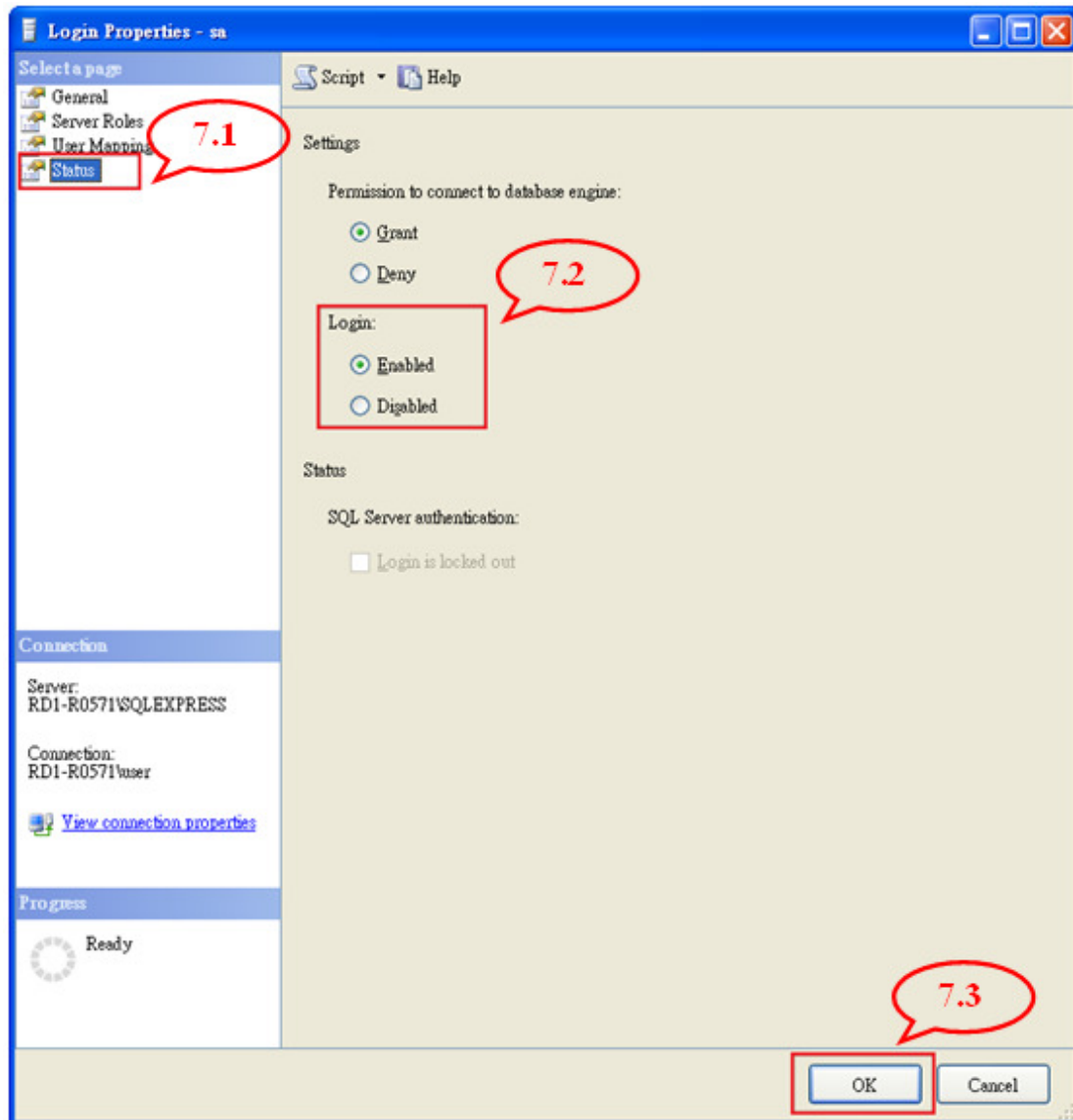


Step7. On the page [Login Properties - sa]

7.1 Select [Status].

7.2 In the [Login] status select [Enabled].

7.3 Click [OK]



Step.8 Reboot the SQL Server or computer

Right-click the main database (host name \ SQLEXPRESS) and select [Restart]