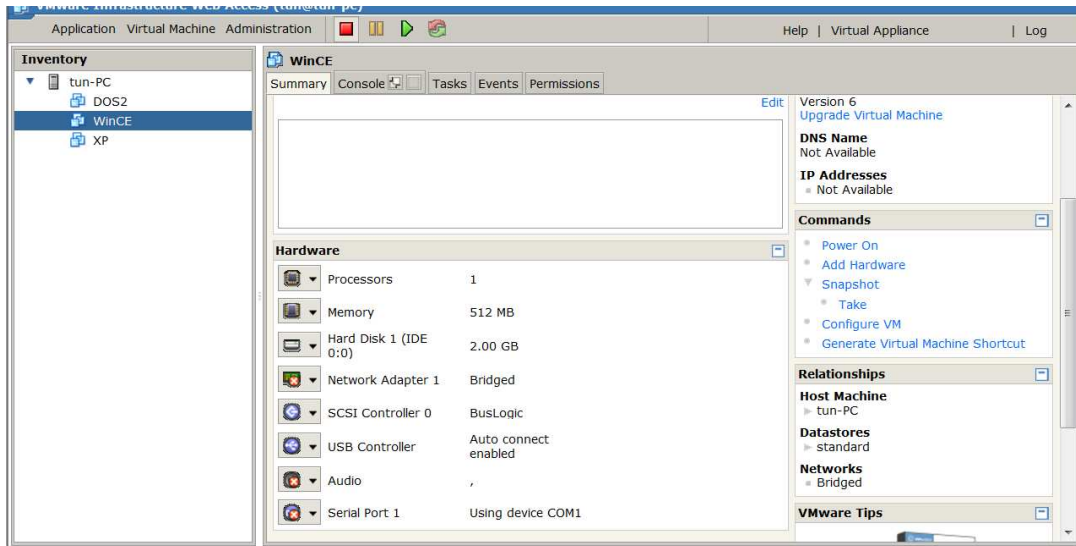


Connecting to VM via FTP

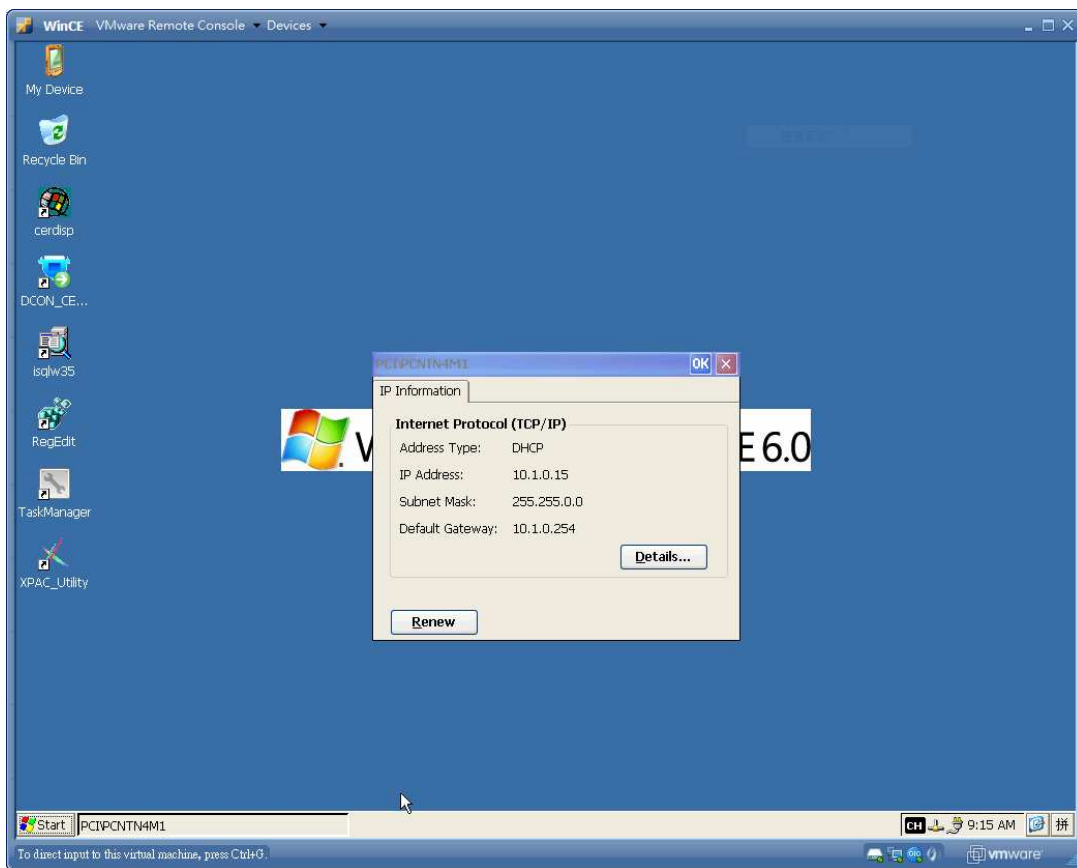
DHCP solution

Check the Network Adapter 1 on the summary of WinCE VM is "Bridged".



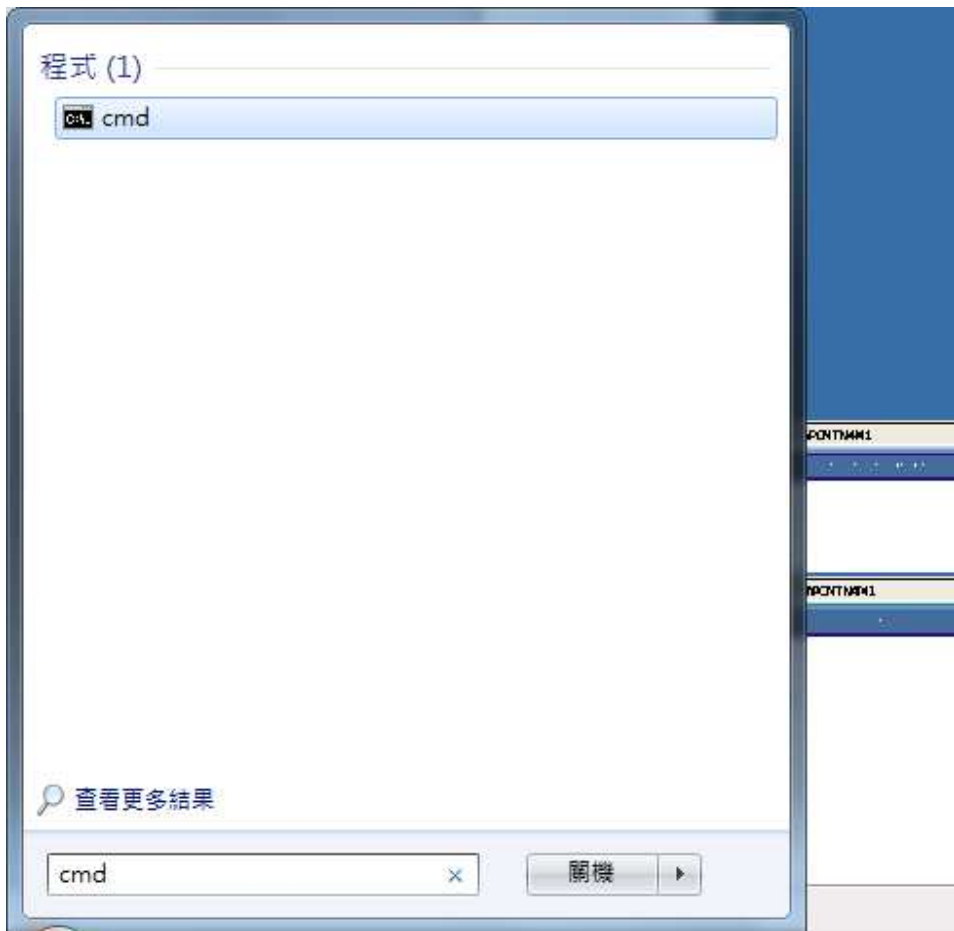
Step 1: Execute the WinCE VM on VMware

Step 2: Click the LAN ICON on VM to check whether the IP address is valid (Obtained from DHCP)



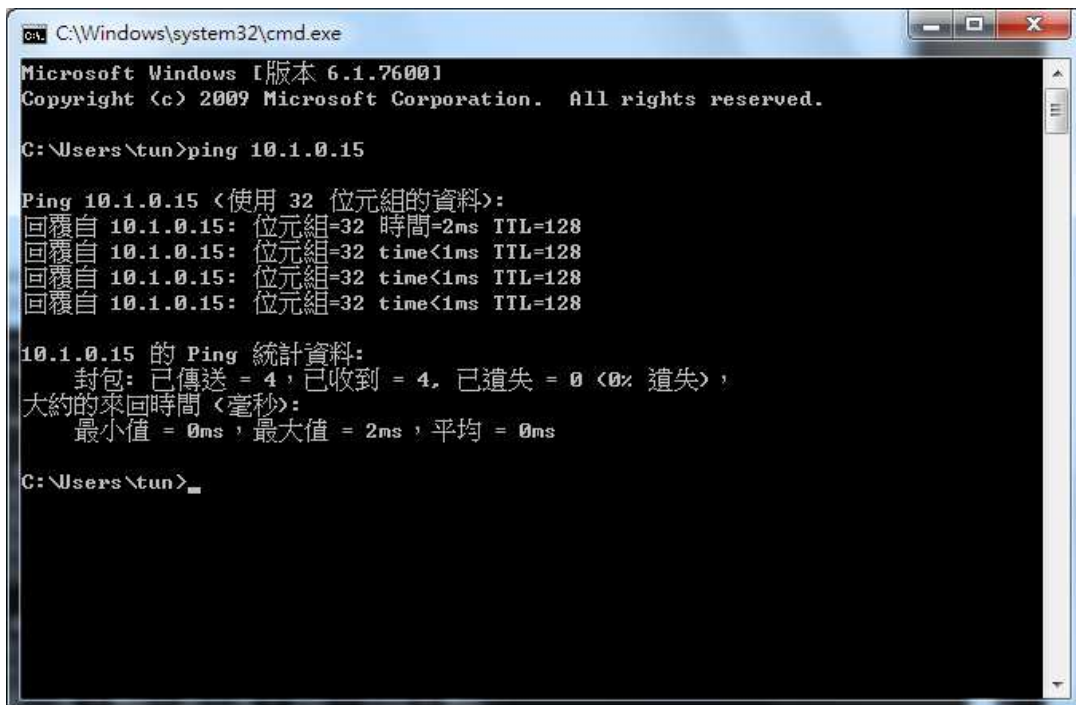
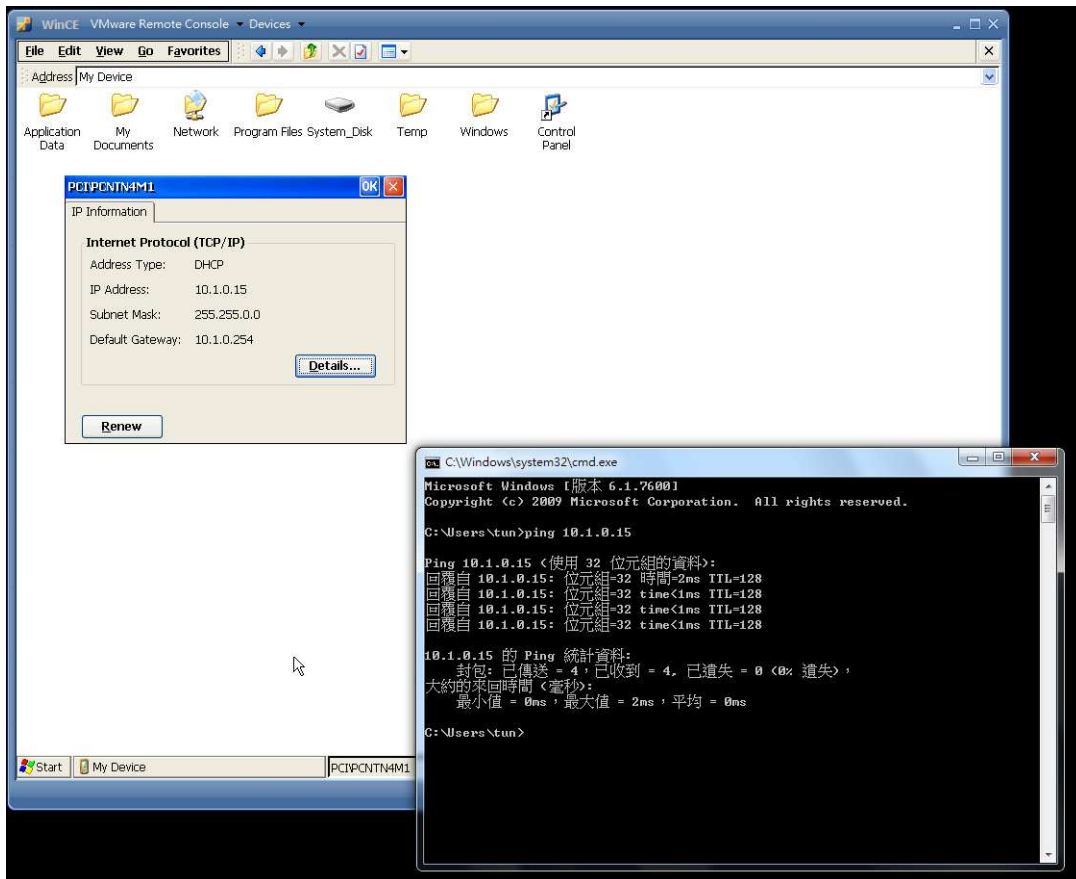
Step 3: Execute the "Cmd" on PC





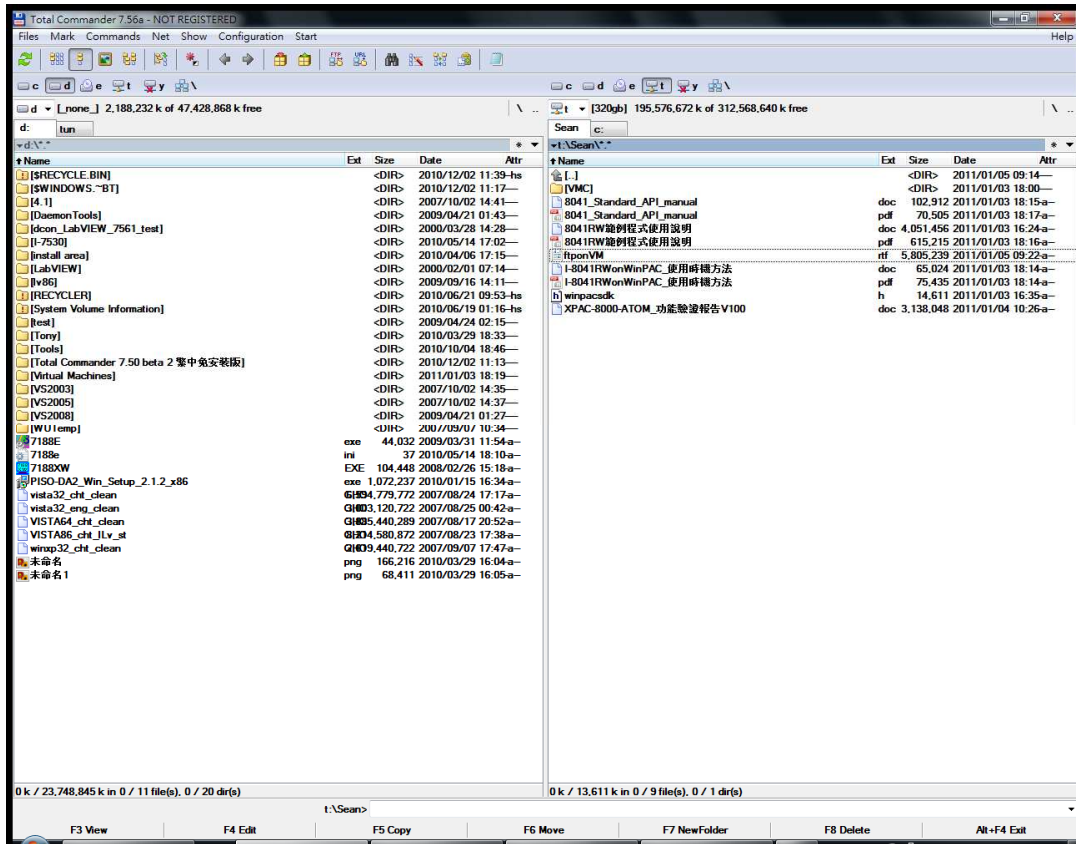
Step 4:

Ping the IP address of VM from PC to check whether the PC and VM can be connected.

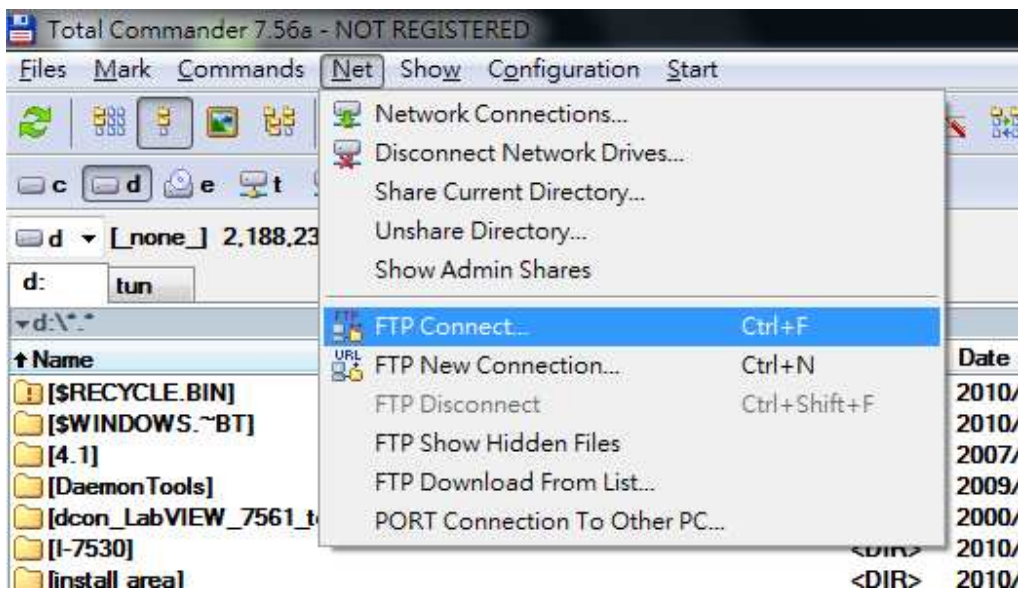


Step 5: Use FTP tool to connect to VM (FTP tools: such as FileZilla , CuteFTP, SmartFTP etc.)

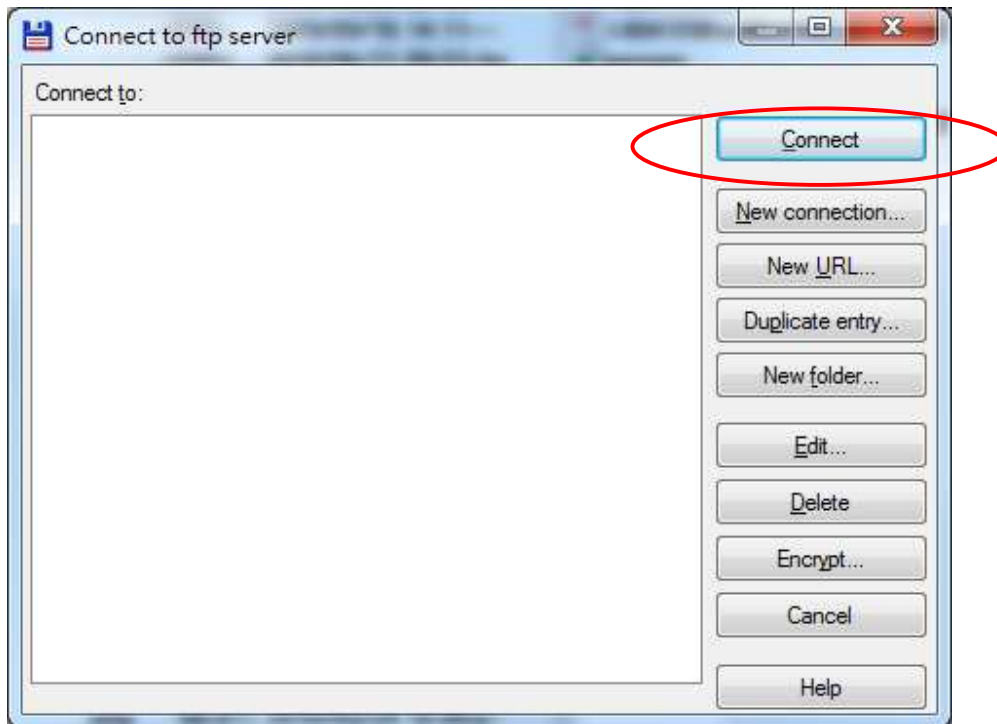
(The example below is using the Total commander)



Step 5-1: Click FTP connect on Net menu

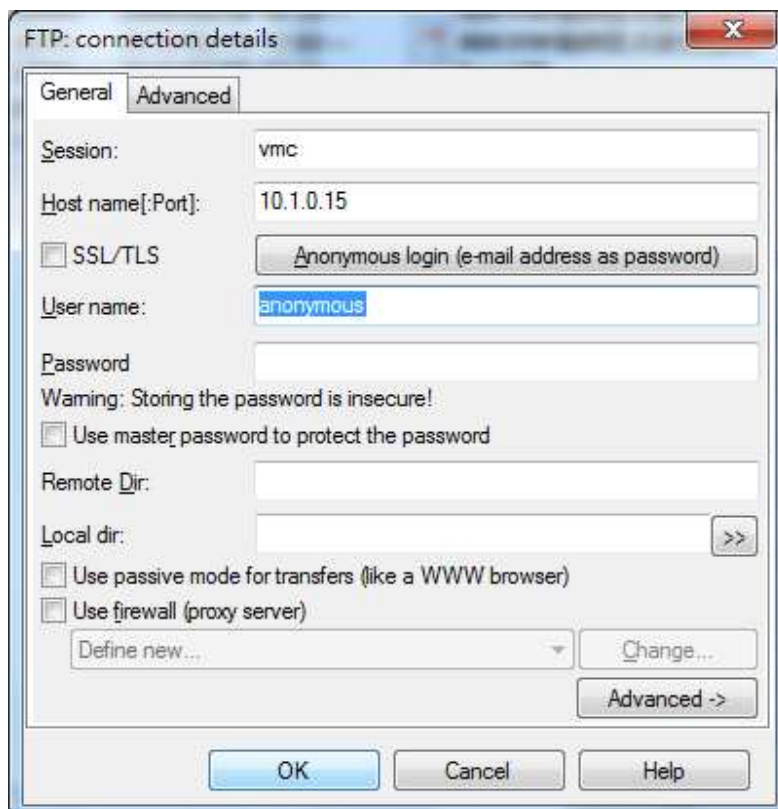


Step 5-2: Click "New connection" button

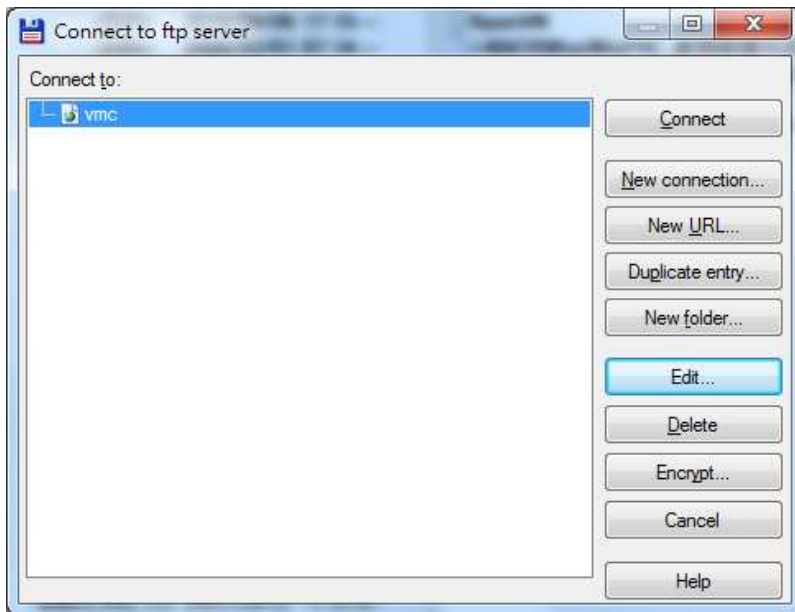


Step 5-3: Input Session name/IP address of VM on Host name textbox and Click "Anonymous login" button to input user name and password for this FTP connection.

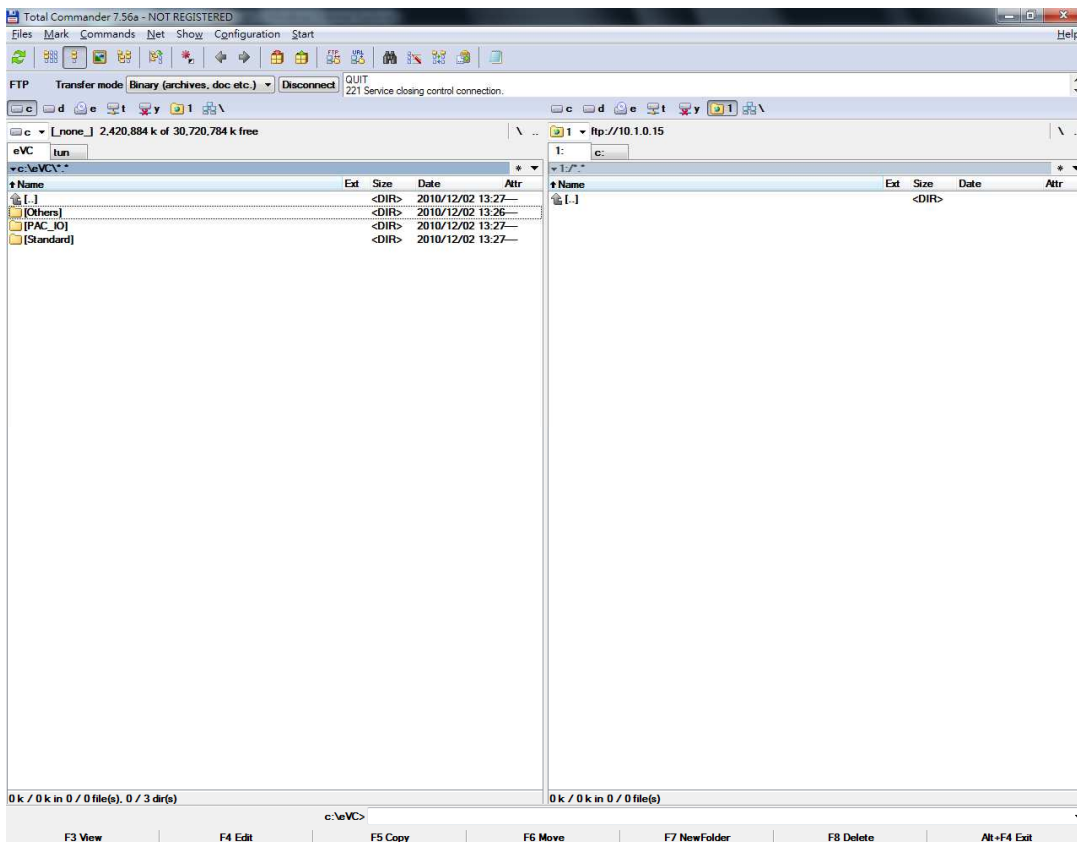
While the setting is finished, press OK button.



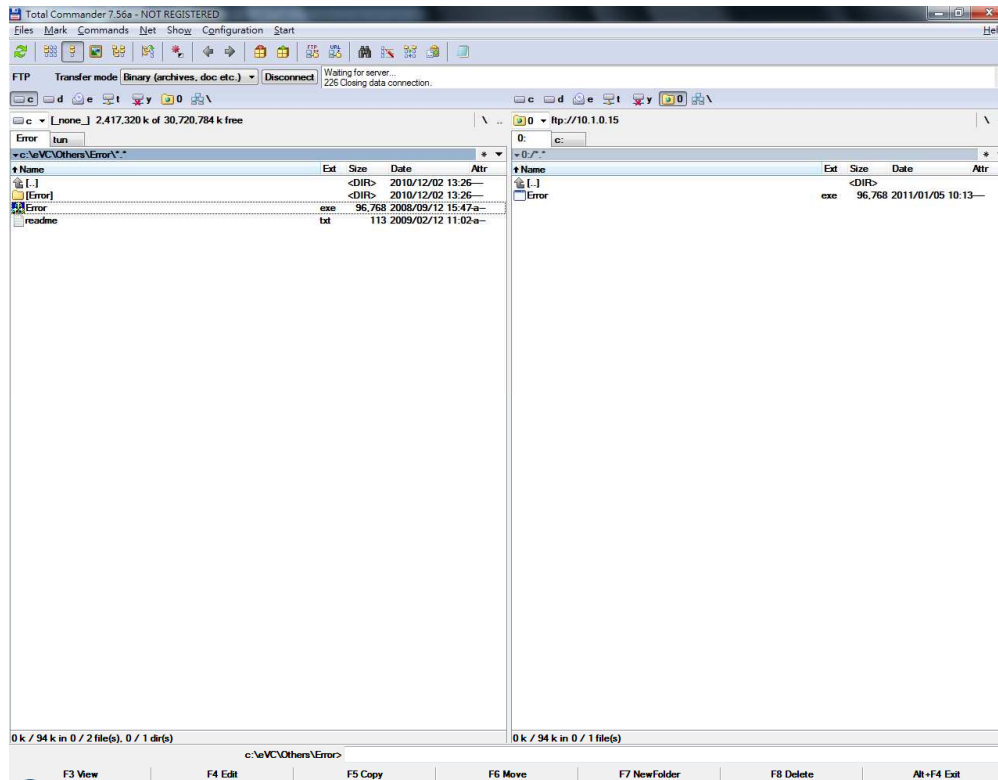
Step 5-4: Click the VMC on the “Connect to” list box and press “Connect” to build a FTP connection.



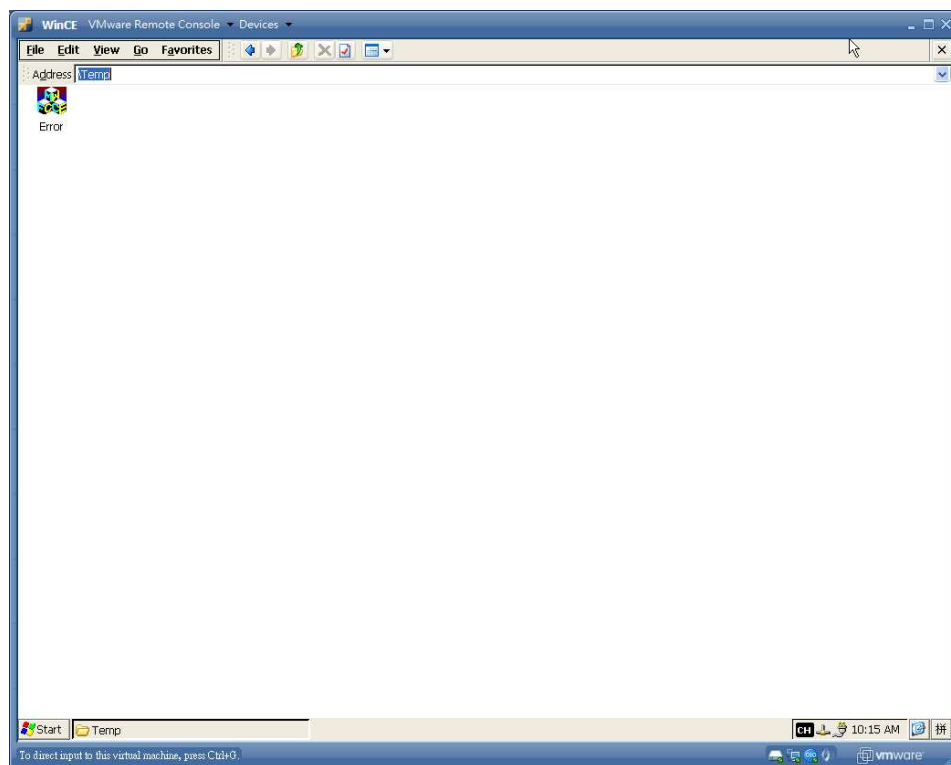
Step 5-5: While the connection is established, the folder of the right-side windows is shown as follows.



Step 5-6: Download a file (error.exe) to VM



Step 5-7: Check whether the file exists on VM (The default location of FTP on VM is on “\Temp”).



No DHCP solution

Check the Network Adapter 1 on the summary of WinCE VM is "NAT".

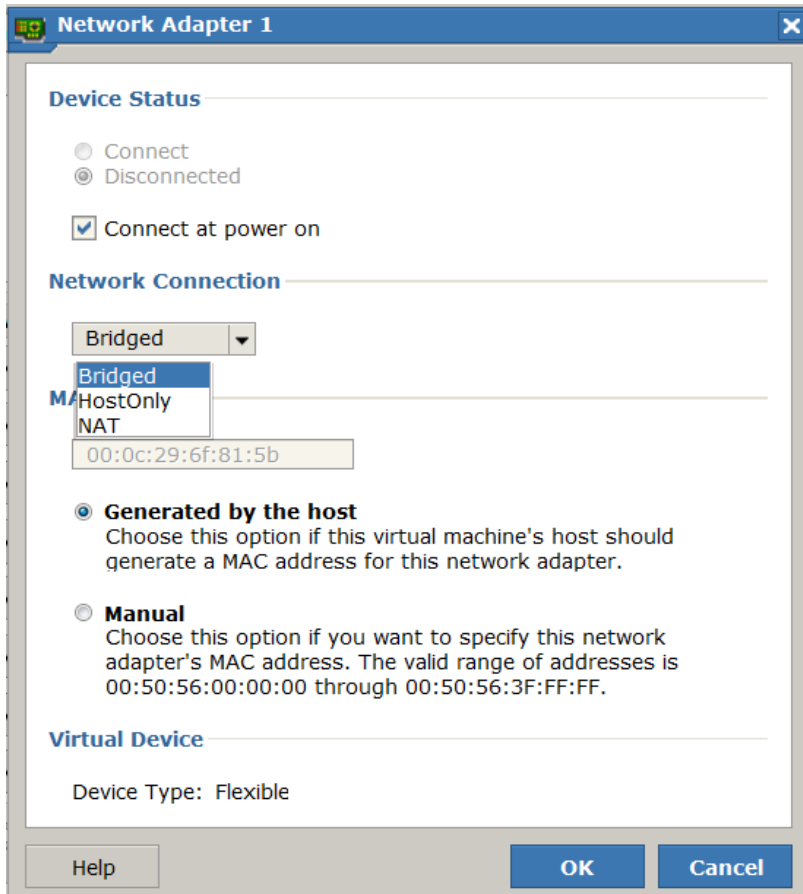
If not, please follow the step to modify the setting.

1. Click "Edit" on Network Adapter 1.

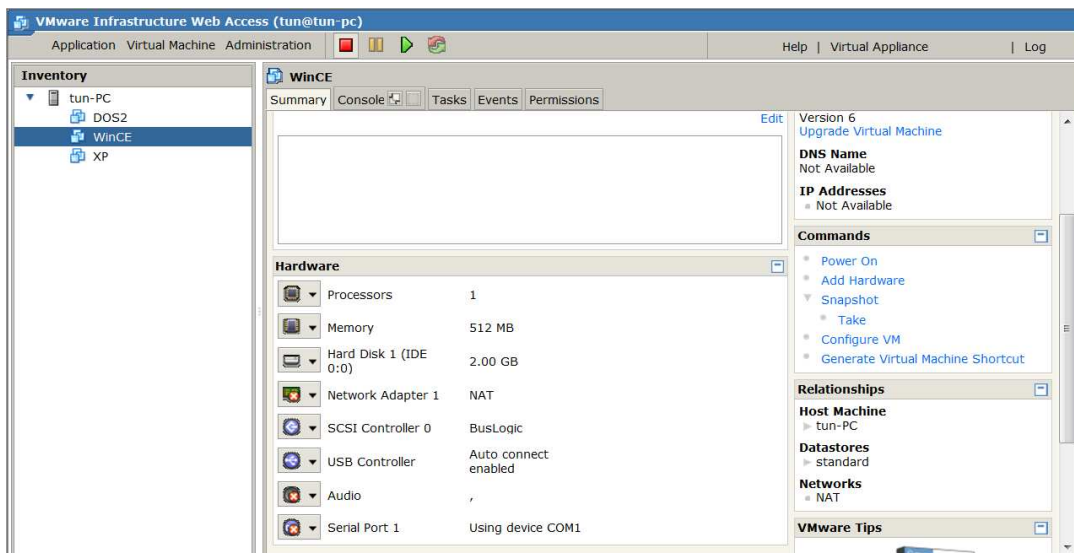
The screenshot displays the VMware Infrastructure Web Access interface for a WinCE virtual machine. The left sidebar shows the inventory with 'WinCE' selected. The main area shows the 'Summary' tab for the WinCE VM, with the 'Hardware' section expanded to show 'Network Adapter 1' selected. The 'Edit...' button is highlighted for the Network Adapter 1. The summary panel on the right shows 'Version 6', 'DNS Name Not Available', and 'IP Addresses Not Available'. The task log at the bottom shows two successful power operations for WinCE.

Task	Target	Status	Triggered At	Triggered by	Completed At
Power On	WinCE	Success	01/05/11 10:15:46 AM	tun	01/05/11 10:15:49 AM
Power On	WinCE	Success	01/05/11 10:11:27 AM	tun	01/05/11 10:11:29 AM

2. Change the Bridged to NAT and Press OK button

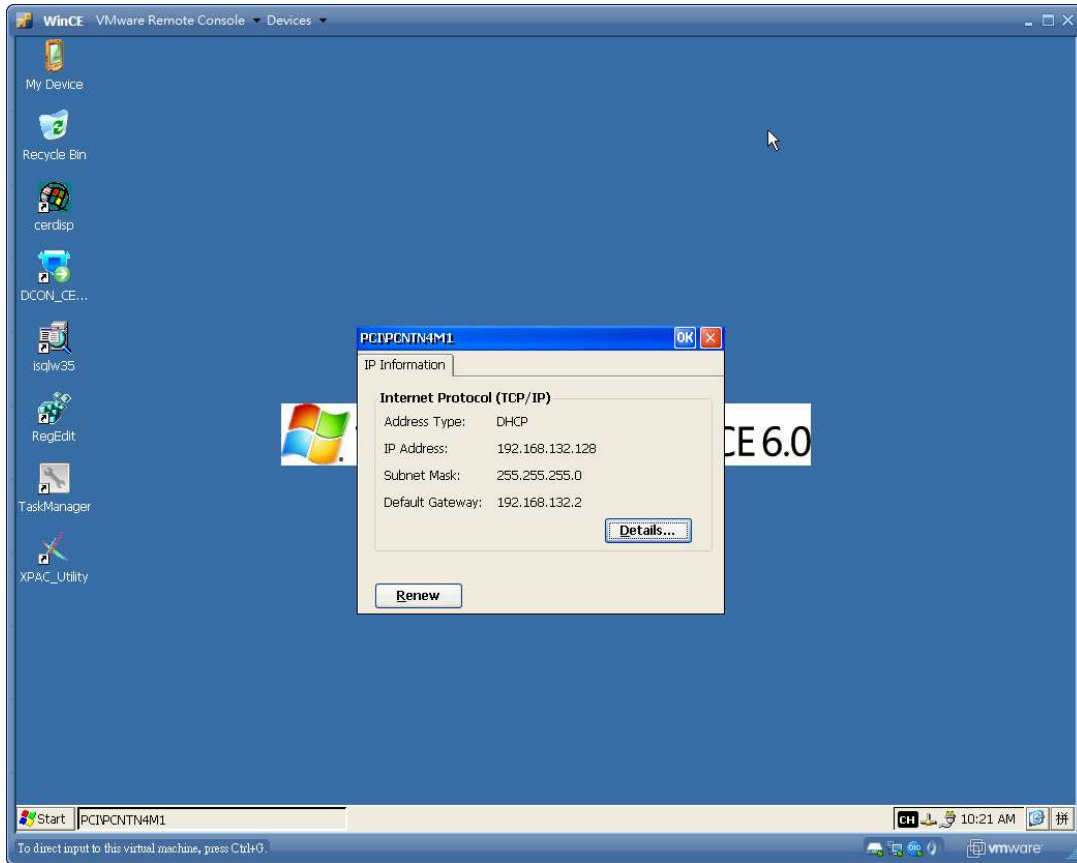


3. Network Adapter 1 is set to NAT.



Step 1: Execute the WinCE VM on VMware

Step 2: Click the LAN ICON on VM to check whether the IP address is valid (Obtained from NAT)



Step 3: Ping the IP address of VM from PC to check whether the PC and VM can be connected.

```
C:\Windows\system32\cmd.exe
媒體狀態 . . . . . : 媒體已中斷連線
連線特定 DNS 尾碼 . . . . . :
通道介面卡 isatap.{C60B3F28-E0E0-43ED-8252-F391A0FEA513}:
媒體狀態 . . . . . : 媒體已中斷連線
連線特定 DNS 尾碼 . . . . . :
通道介面卡 isatap.icpdas.com:
媒體狀態 . . . . . : 媒體已中斷連線
連線特定 DNS 尾碼 . . . . . :
C:\Users\tun>ping 192.168.132.128

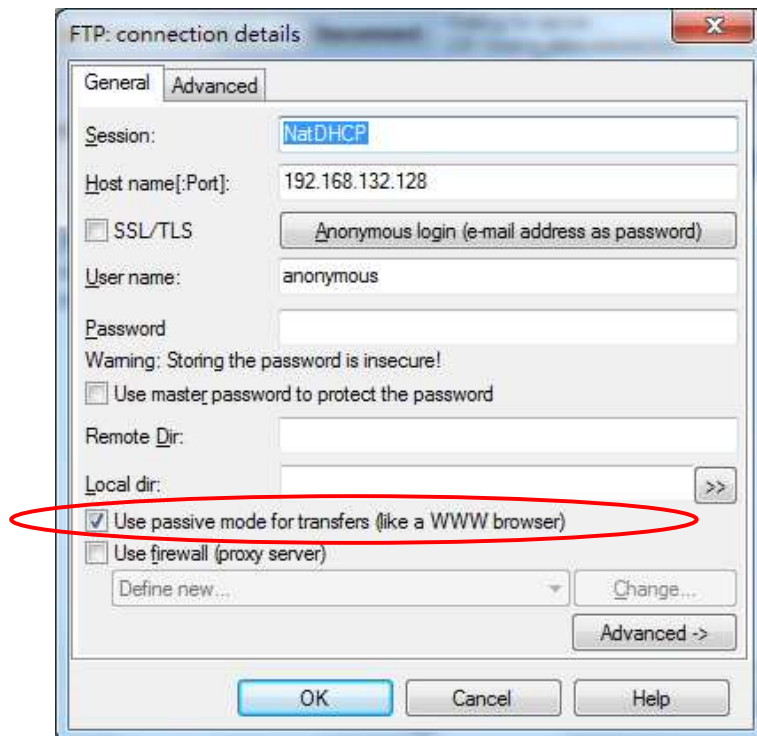
Ping 192.168.132.128 <使用 32 位元組的資料>:
回覆自 192.168.132.128: 位元組=32 時間=1ms TTL=128
回覆自 192.168.132.128: 位元組=32 time<1ms TTL=128
回覆自 192.168.132.128: 位元組=32 time<1ms TTL=128
回覆自 192.168.132.128: 位元組=32 time<1ms TTL=128

192.168.132.128 的 Ping 統計資料:
封包: 已傳送 = 4, 已收到 = 4, 已遺失 = 0 (0% 遺失),
大約的來回時間 (毫秒):
    最小值 = 0ms, 最大值 = 1ms, 平均 = 0ms

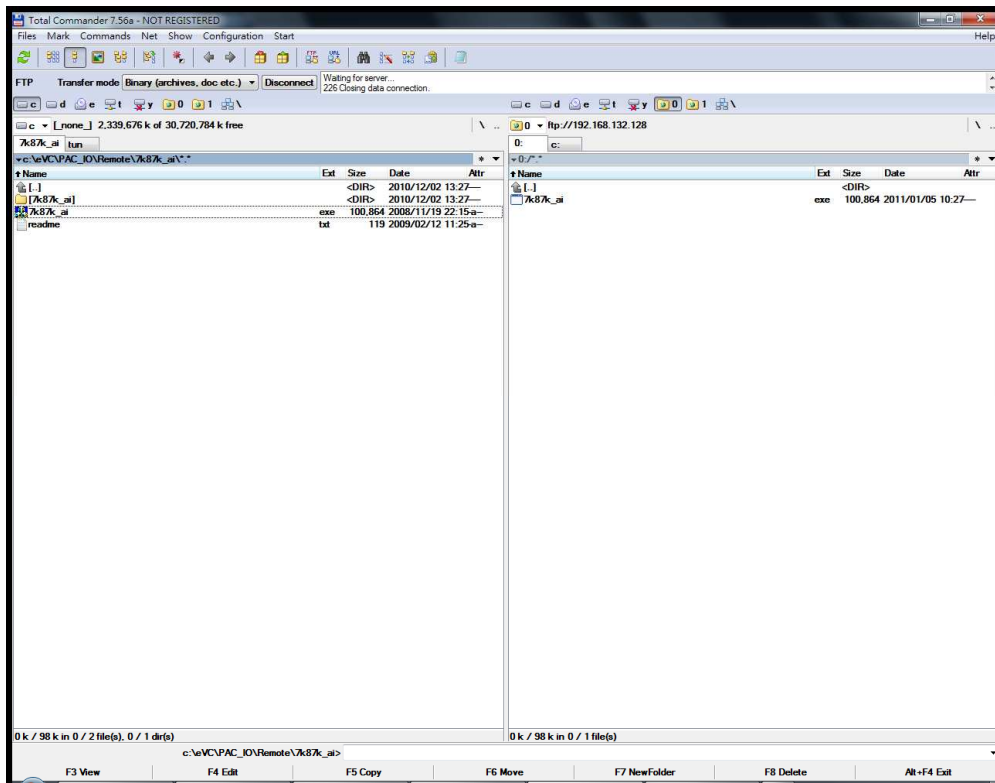
C:\Users\tun>
```

Step 4: Use Total commander to connect to VM via FTP.

(It must to check the “Use passive mode for transfers (like a WWW browser) checkbox)



Step 5-1: Download a file (7k87k_ai.exe) to VM



Step 5-2: Check whether the file exists on VM (The default location of FTP on VM is on “\Temp”).

