

Classification	System and Application FAQ on XPAC				No.	2-007-00	
Author	WeiKai	Version	1.0.0	Date	2013/3/17	Page	1/7

如何加入捷徑到桌面和程式集中

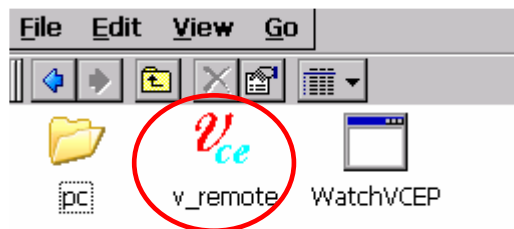
Applies to:

Platform	OS version	XPAC utility version
XPAC series	All versions (WinCE6)	All versions

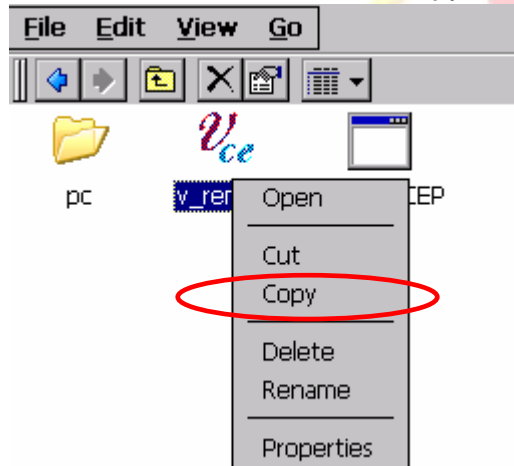
按下列步驟加入捷徑到桌面，捷徑在重開機後將不會消失

Step 1: 建立一個捷徑

1.1. 選擇你要建立捷徑的檔案

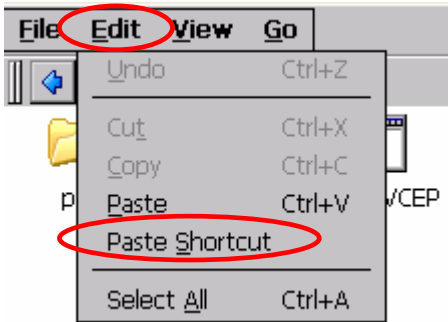


1.2. 按下滑鼠右鍵，並選擇“Copy”。

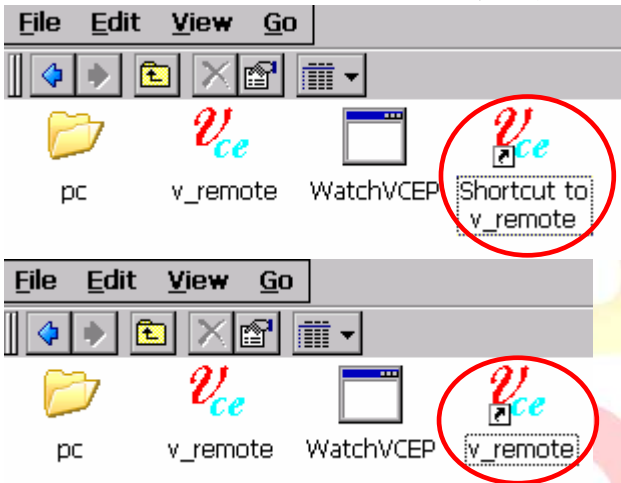


Classification	System and Application FAQ on XPAC				No.	2-007-00	
Author	WeiKai	Version	1.0.0	Date	2013/3/17	Page	2/7

1.3. 按下選單中的“Edit”，隨後按下“Paste Shortcut”



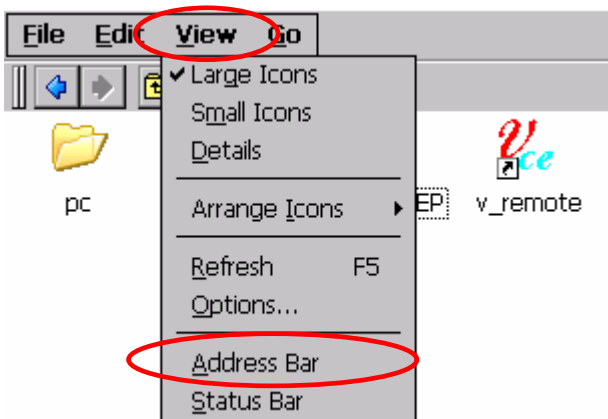
1.4. 將“shortcut to xx.ink”捷徑名稱修改成 “xx.ink”



Step 2: 加入捷徑到桌面和程式集選單中

2.1. 記下捷徑路徑

2.1.1. 按下選單中的“View”，隨後按下“Address Bar”



Classification	System and Application FAQ on XPAC				No.	2-007-00	
Author	WeiKai	Version	1.0.0	Date	2013/3/17	Page	3/7

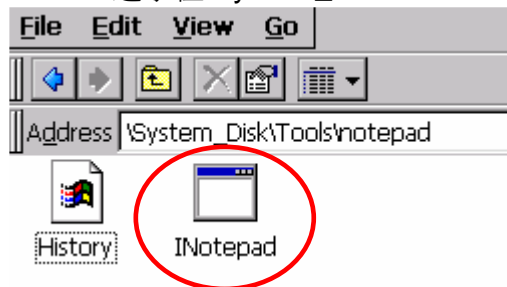
2.1.2. 記下檔案路徑



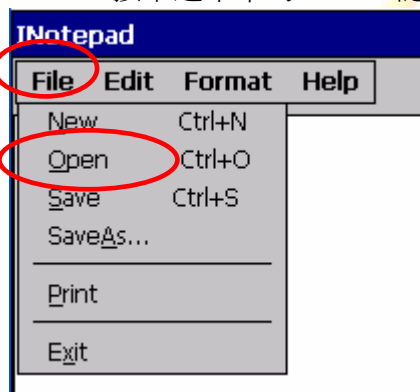
2.2. 加入捷徑資訊到“AutoInit.bat”

2.2.1. 使用 INotepad.exe 編輯“AutoInit.bat”

2.2.1.1. 連擊在 \\System_Disk\Tools\notepad 內的 INotepad.exe

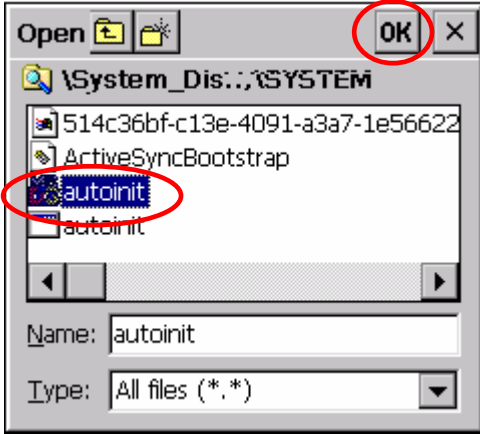


2.2.1.2. 按下選單中的“File”，隨後按下“Open”

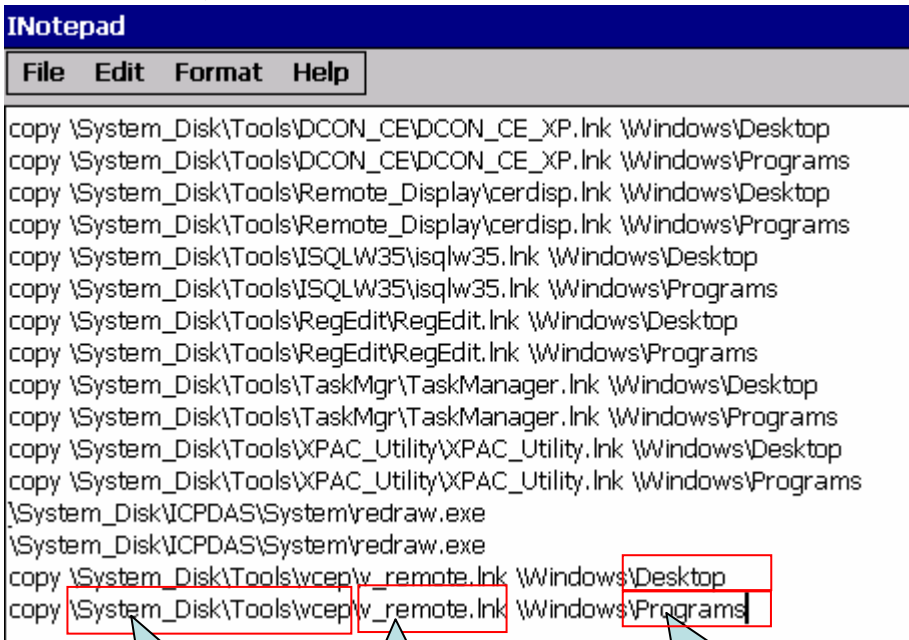


Classification	System and Application FAQ on XPAC				No.	2-007-00	
Author	Weikai	Version	1.0.0	Date	2013/3/17	Page	4/7

2.2.1.3. 開啓在“\System_Disk\ICPDAS\System”內的“Autolnit.bat”



2.2.2 加入捷徑資訊到“Autolnit.bat”



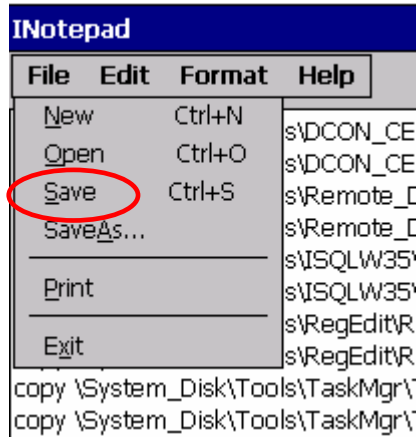
捷徑檔案的路徑

捷徑檔案的名稱

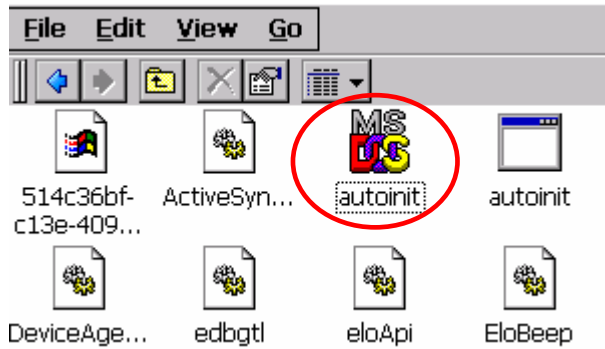
複製捷徑檔案到桌面資料夾和程式集選單

Classification	System and Application FAQ on XPAC				No.	2-007-00	
Author	WeiKai	Version	1.0.0	Date	2013/3/17	Page	5/7

2.2.3 按下選單中的“File”，隨後按下“Save”

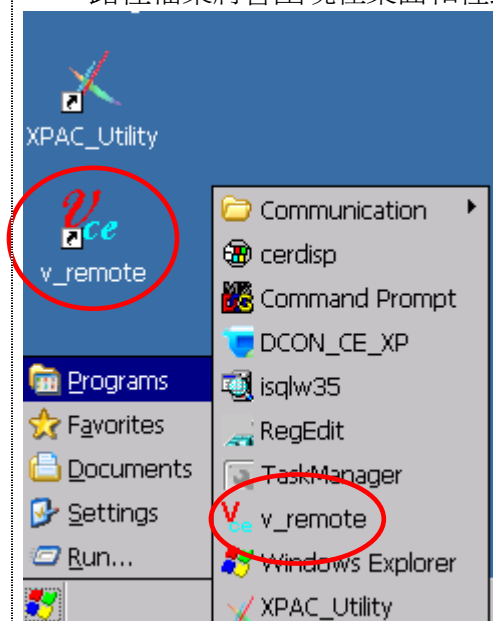


2.3. 連擊在“System_Disk\ICPDAS\System”內的“AutoInit.bat”



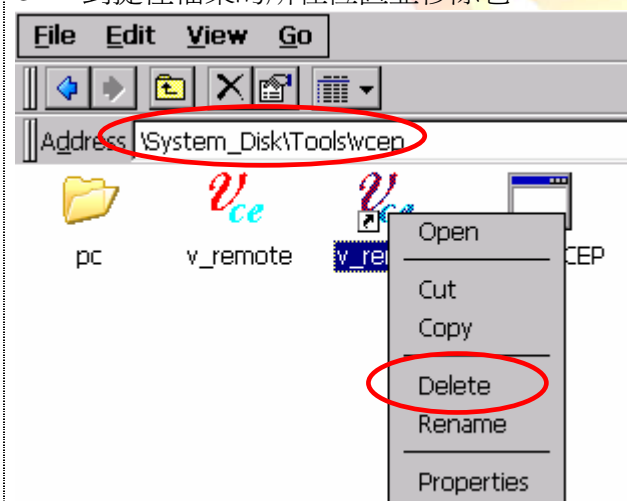
Classification	System and Application FAQ on XPAC				No.	2-007-00	
Author	WeiKai	Version	1.0.0	Date	2013/3/17	Page	6/7

2.4. 路徑檔案將會出現在桌面和程式集選單上



Step 3: 移除桌面和程式選單上的捷徑(重開機後捷徑不再出現)

3.1. 到捷徑檔案的所在位置並移除它



Classification	System and Application FAQ on XPAC				No.	2-007-00	
Author	WeiKai	Version	1.0.0	Date	2013/3/17	Page	7/7

3.2. 移除在“Autolnit.bat”中的項目

```

INotepad
File Edit Format Help
copy \System_Disk\Tools\DCON_CE\DCON_CE_XP.lnk \Windows\Desktop
copy \System_Disk\Tools\DCON_CE\DCON_CE_XP.lnk \Windows\Programs
copy \System_Disk\Tools\Remote_Display\cerdisp.lnk \Windows\Desktop
copy \System_Disk\Tools\Remote_Display\cerdisp.lnk \Windows\Programs
copy \System_Disk\Tools\ISQLW35\isqlw35.lnk \Windows\Desktop
copy \System_Disk\Tools\ISQLW35\isqlw35.lnk \Windows\Programs
copy \System_Disk\Tools\RegEdit\RegEdit.lnk \Windows\Desktop
copy \System_Disk\Tools\RegEdit\RegEdit.lnk \Windows\Programs
copy \System_Disk\Tools\TaskMgr\TaskManager.lnk \Windows\Desktop
copy \System_Disk\Tools\TaskMgr\TaskManager.lnk \Windows\Programs
copy \System_Disk\Tools\XPAC_Utility\XPAC_Utility.lnk \Windows\Desktop
copy \System_Disk\Tools\XPAC_Utility\XPAC_Utility.lnk \Windows\Programs
\System_Disk\ICPDAS\System\redraw.exe
\System_Disk\ICPDAS\System\redraw.exe
copy \System_Disk\Tools\wcep\w_remote.lnk \Windows\Desktop
copy \System_Disk\Tools\wcep\w_remote.lnk \Windows\Programs

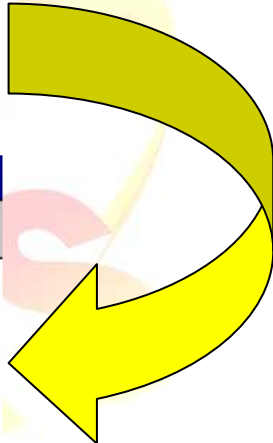
```

```

INotepad
File Edit Format Help
copy \System_Disk\Tools\DCON_CE\DCON_CE_XP.lnk \Windows\Desktop
copy \System_Disk\Tools\DCON_CE\DCON_CE_XP.lnk \Windows\Programs
copy \System_Disk\Tools\Remote_Display\cerdisp.lnk \Windows\Desktop
copy \System_Disk\Tools\Remote_Display\cerdisp.lnk \Windows\Programs
copy \System_Disk\Tools\ISQLW35\isqlw35.lnk \Windows\Desktop
copy \System_Disk\Tools\ISQLW35\isqlw35.lnk \Windows\Programs
copy \System_Disk\Tools\RegEdit\RegEdit.lnk \Windows\Desktop
copy \System_Disk\Tools\RegEdit\RegEdit.lnk \Windows\Programs
copy \System_Disk\Tools\TaskMgr\TaskManager.lnk \Windows\Desktop
copy \System_Disk\Tools\TaskMgr\TaskManager.lnk \Windows\Programs
copy \System_Disk\Tools\XPAC_Utility\XPAC_Utility.lnk \Windows\Desktop
copy \System_Disk\Tools\XPAC_Utility\XPAC_Utility.lnk \Windows\Programs
\System_Disk\ICPDAS\System\redraw.exe
\System_Disk\ICPDAS\System\redraw.exe

```

Remove



3.3. 捷徑將在重開機後移除