

Classification	System and Application FAQ on WinCE PAC				No.	2-001-00	
Author	Eric_Shiu	Version	1.0.1	Date	2018/04/27	Page	1/14

How to use VCEP to remotely control and monitor WinPAC and ViewPAC from anywhere on the Ethernet

Applies to:

<i>Platform</i>	<i>OS Version</i>	<i>PAC Utility Version</i>
<i>WinPAC</i>	<i>All Versions</i>	<i>All Versions</i>
<i>ViewPAC</i>	<i>All Versions</i>	<i>All Versions</i>

The ICP DAS VCEP is designed to help you manage your WinPAC/ViewPAC for any location. No matter where you are, the ICP DAS VCEP provides a convenient environment on your PC to remotely control the WinPAC and ViewPAC, capture screen of the WinCE PAC on PC, and synchronize files on the two sides and record screen activity to video.

The ICP DAS VCEP is composed of two main components: the 'Server' which runs on WinCE PAC and the 'Client' which runs on a regular PC. Once a connection is established between the client and server, the client periodically requests screen updates and sends mouse/key events to the server.



For more detailed information on VCEP applications, please refer to:

http://www.icpdas.com/products/PAC/wincon-8000/wincon_VirtualCE.htm

Classification	System and Application FAQ on WinCE PAC				No.	2-001-00	
Author	Eric_Shiu	Version	1.0.1	Date	2018/04/27	Page	2/14

In this article it introduces

1. How to get started with VCEP to link the WinPAC or ViewPAC via the LAN (page 2)
2. How to get started with VCEP to link the WinPAC or ViewPAC via the WAN (page 6)
3. After VCEP 5.0, make the Win PAC/ViewPAC active Connection from Server (page 10)
4. How to make the VCEP server always on over the PAC working time period (page 13)

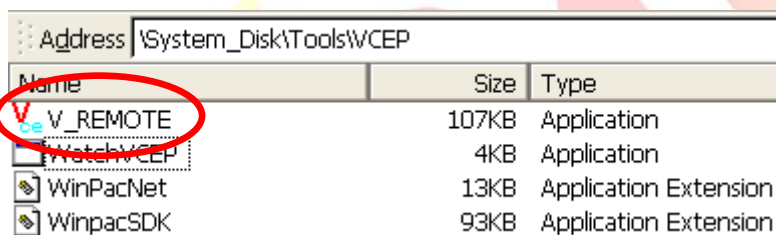
1. Linking the WinPAC or ViewPAC via the LAN

You just need to run the VCEP server on PAC, and then configure the VCEP client on the PC. The VCEP client would scan all the servers on the LAN automatically and list them for you to select one server to link with.

Note: If your WinPAC/ViewPAC is behind the firewall, please make sure to keep port **1899** and **1903** open.

Server execution on WinPAC/ ViewPAC Side

Step 1: Go to “\System_disk\Tools\VCEP” folder and double click **v_remote.exe**.



Client configuration on PC Side

Step 2: Install the VCEP client on your host PC.

The “vcep_4.2.0.7.exe” file is located at
 Companion CD: \napdos\wp-8x4x_ce50\pc_tools\vcep_4.2.0.7\ or
ftp://ftp.icpdas.com/pub/cd/winpac/napdos/wp-8x4x_ce50/pc_tools/vcep_4.2.0.7/

Classification	System and Application FAQ on WinCE PAC				No.	2-001-00	
Author	Eric_Shiu	Version	1.0.1	Date	2018/04/27	Page	3/14

Address ftp://ftp.icpdas.com/pub/cd/winpac/napdos/wp-8x4x_ce50/pc_tools/vcep_4.2.0.7/

FTP directory /pub/cd/winpac/napdos/wp-8x4x_ce50/pc_tools/vcep_4.2.0.7/ at ftp.icpdas.com

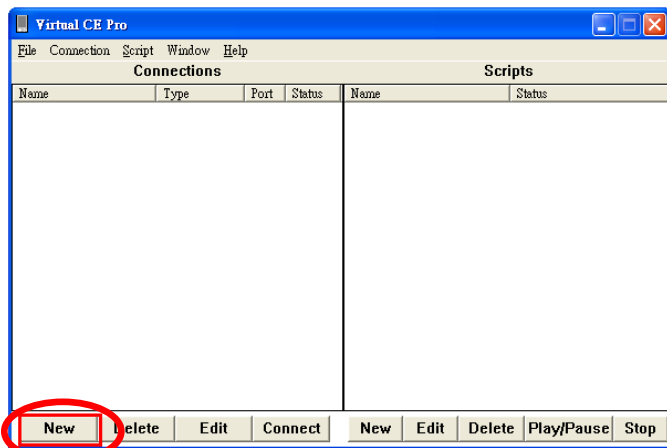
Up to higher level directory

12/07/2009 03:30AM	1,855	history v4.2.0.7.txt
12/07/2009 03:30AM	2,120,377	vcep_4.2.0.7.exe
12/07/2009 03:30AM	821,000	vcep_quick_start_manual.pdf

Step 3: Run the "Virtual CE Pro Client"

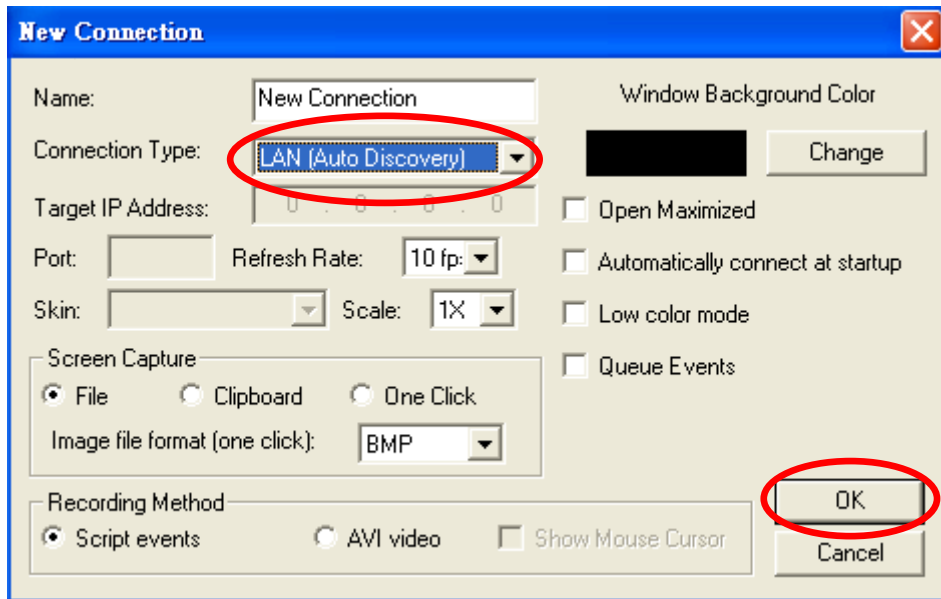


Step 4: Click the "New" button to add a new connection.

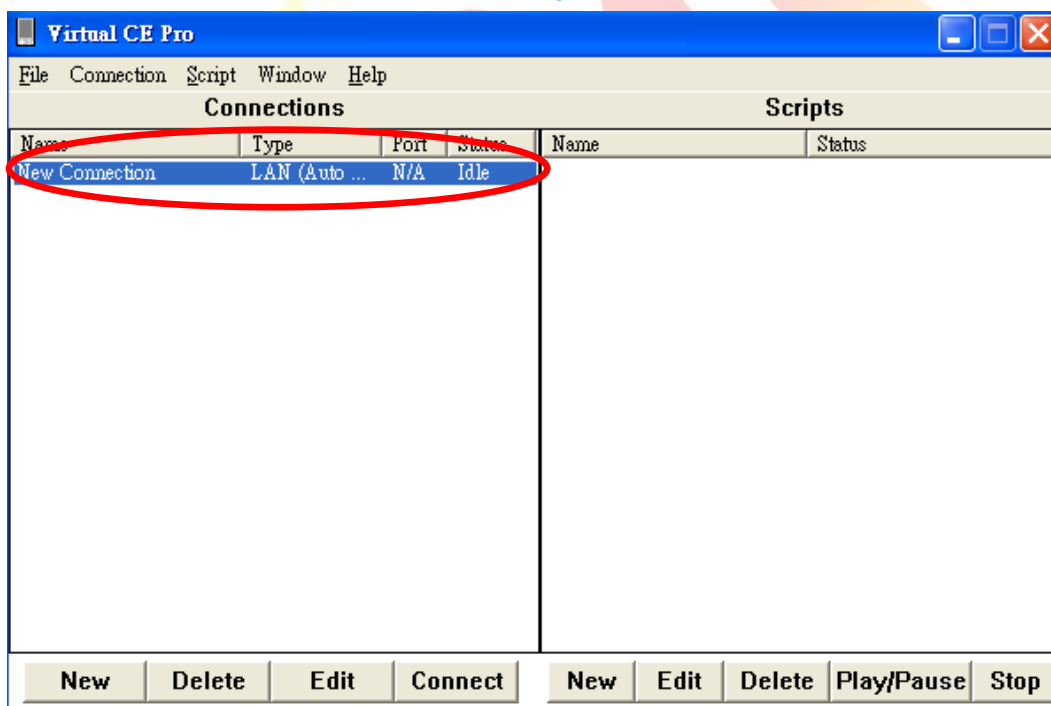


Classification	System and Application FAQ on WinCE PAC				No.	2-001-00	
Author	Eric_Shiu	Version	1.0.1	Date	2018/04/27	Page	4/14

Step 5: Enter a name in the “Name” textbox, choose the “LAN (Auto Discovery)” item from the “Connection Type” comboBox and click the “OK” button.



The new connection is created in the “Connections” List as shown below.

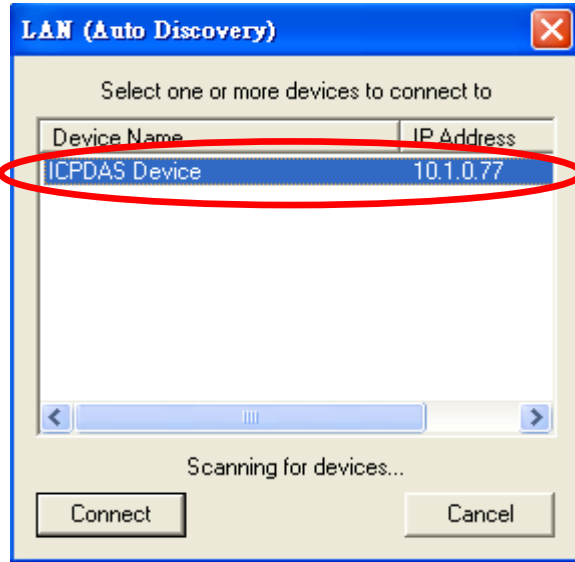


Step 6: Double click the “New connection” item in the “Connections” List; the VCEP client program starts to scan the servers on the LAN.

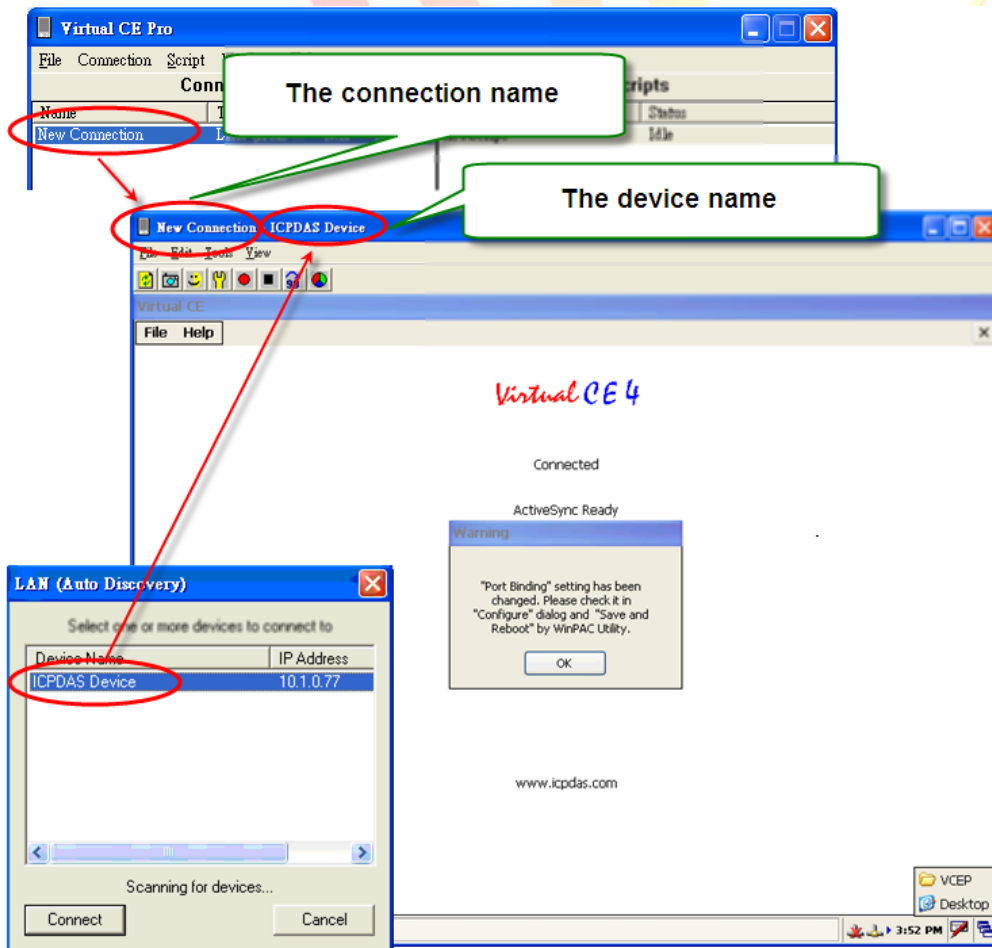
Classification	System and Application FAQ on WinCE PAC				No.	2-001-00	
Author	Eric_Shiu	Version	1.0.1	Date	2018/04/27	Page	5/14

The PAC which is running the v_remote.exe will be searched and added to the device list.

For example, the server is listed with Device Name "ICPDAS Device" and IP Address "10.1.0.77".



Step 7: Double click the target server; the desktop of the remote PAC will be displayed on the Host PC.

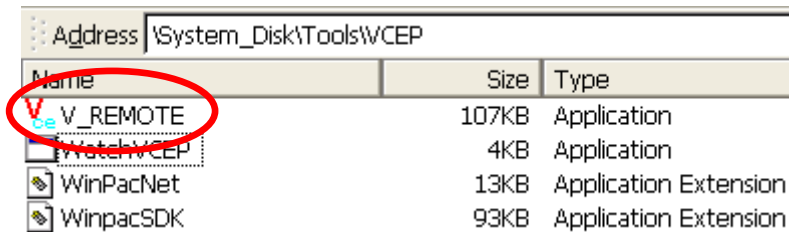


Classification	System and Application FAQ on WinCE PAC				No.	2-001-00	
Author	Eric_Shiu	Version	1.0.1	Date	2018/04/27	Page	6/14

2. Linking the WinPAC or ViewPAC via the WAN

Server execution on WinPAC/ ViewPAC Side

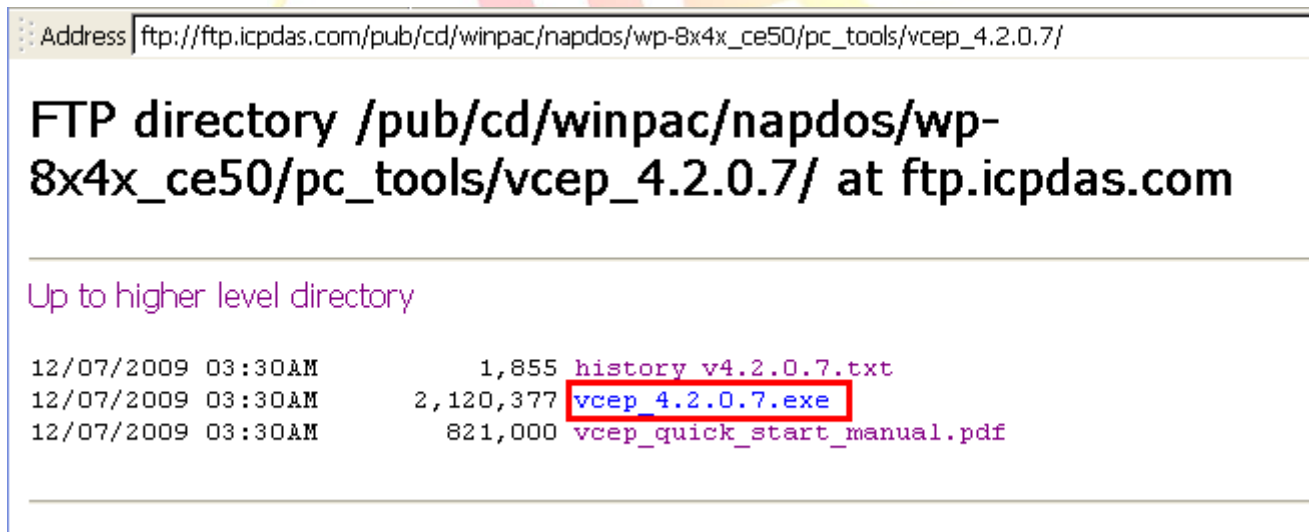
Step 1: Go to “\System_disk\Tools\VCEP” folder and double click **v_remote.exe**.



Client configuration on PC Side

Step 2: Install the VCEP client on your host PC.

The “vcep_4.2.0.7.exe” file is located at
 Companion CD:\napdos\wp-8x4x_ce50\pc_tools\vcep_4.2.0.7\ or
ftp://ftp.icpdas.com/pub/cd/winpac/napdos/wp-8x4x_ce50/pc_tools/vcep_4.2.0.7/

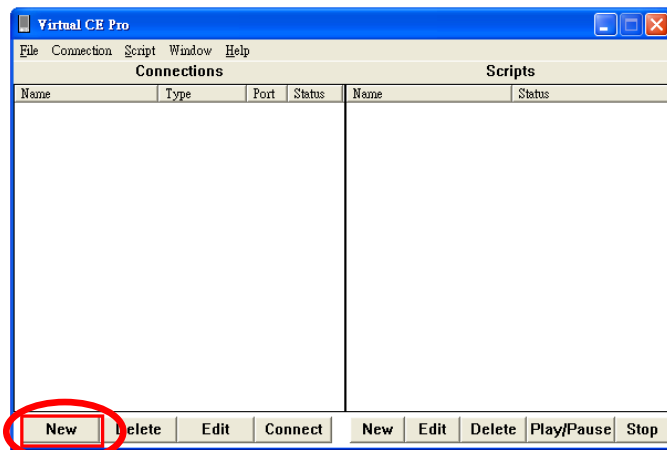


Classification	System and Application FAQ on WinCE PAC				No.	2-001-00	
Author	Eric_Shiu	Version	1.0.1	Date	2018/04/27	Page	7/14

Step 3: Run the "Virtual CE Pro Client"



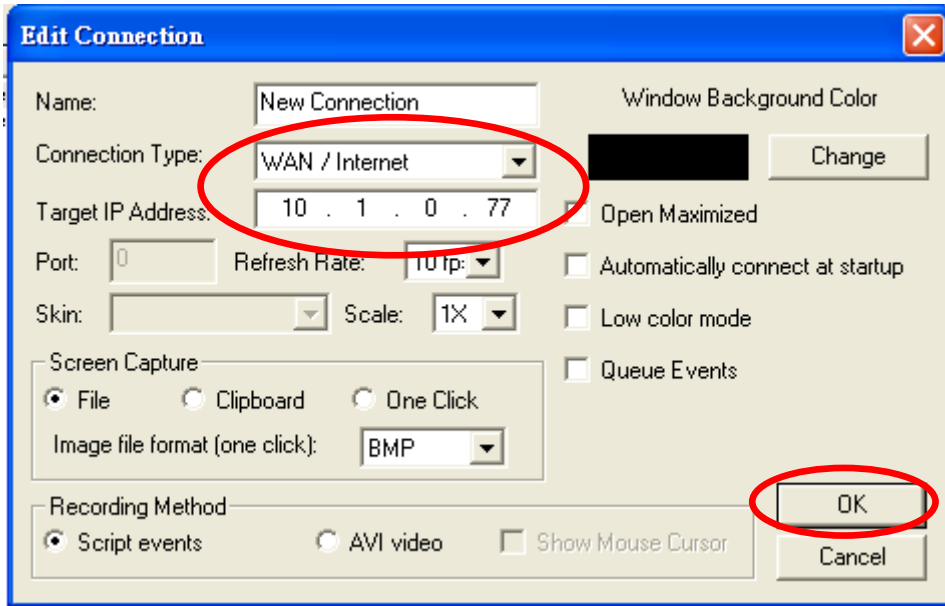
Step 4: Click the "New" button to add a new connection.



Classification	System and Application FAQ on WinCE PAC				No.	2-001-00	
Author	Eric_Shiu	Version	1.0.1	Date	2018/04/27	Page	8/14

Step 5:

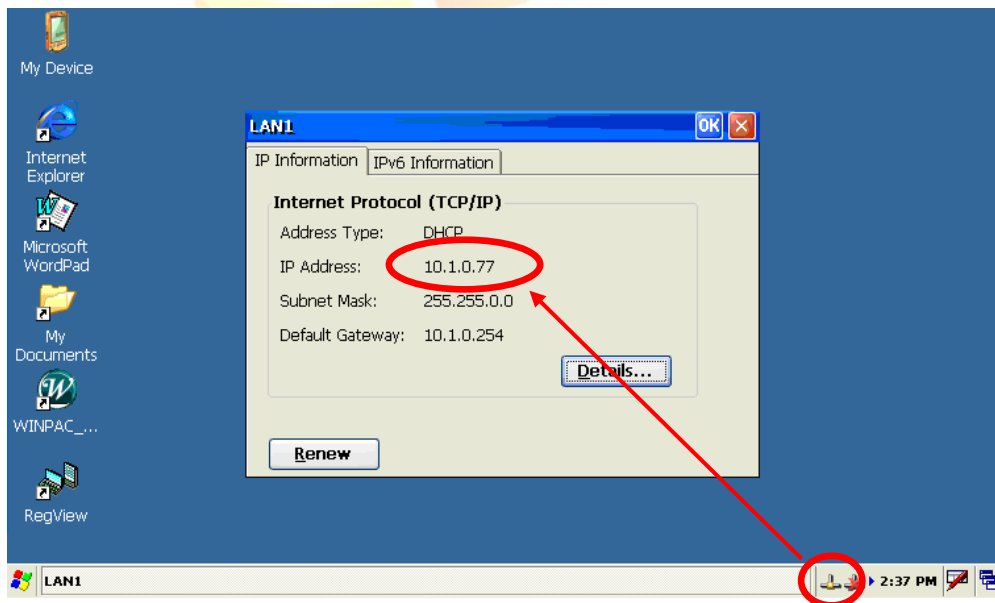
- 5.1 Enter a name in the “Name” textbox
- 5.2 Choose the “WAN / Internet” item from the “Connection Type” comboBox
- 5.3 Enter the IP address of PAC (server) in the “Target IP Address” address box.
- 5.4 Click the “OK” button.



Tips & Warnings

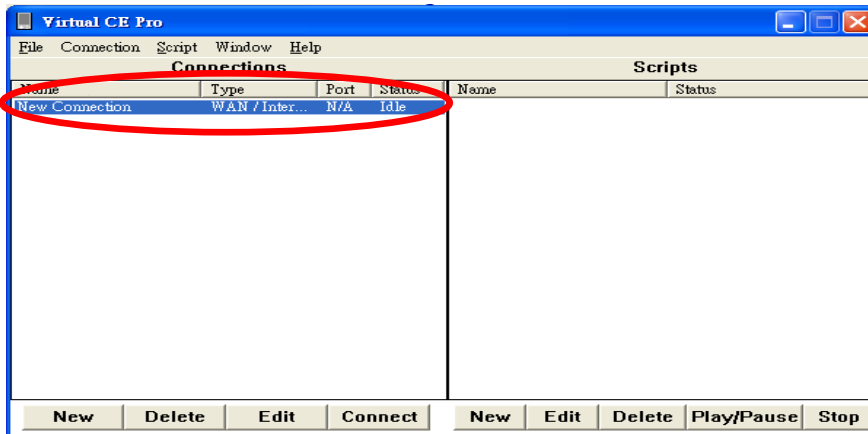


Get the IP Address of the PAC by double-clicking the connection icon on the task bar of the PAC.

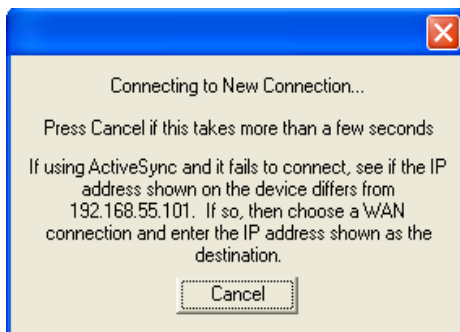


Classification	System and Application FAQ on WinCE PAC				No.	2-001-00	
Author	Eric_Shiu	Version	1.0.1	Date	2018/04/27	Page	9/14

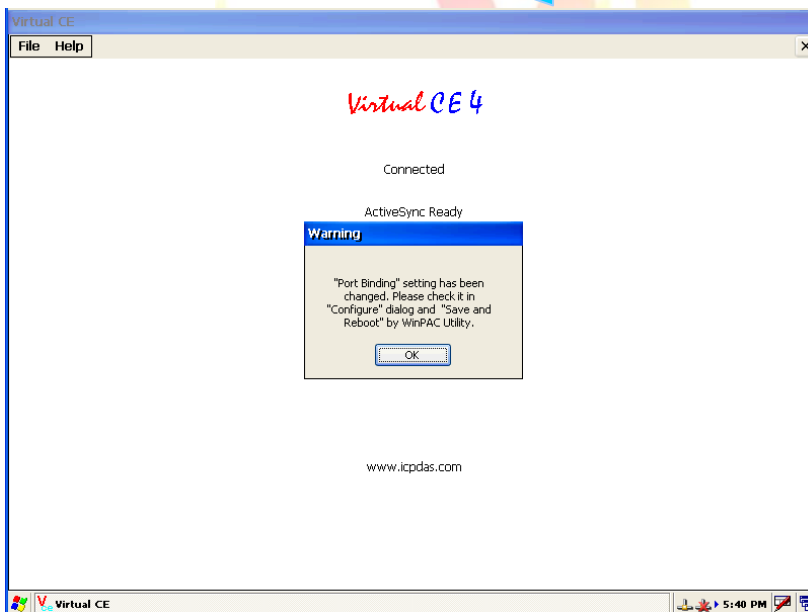
Step 6: Double click “New connection”.



Step 7: Wait few seconds for connection establishment. (Don't click the “Cancel” button.)



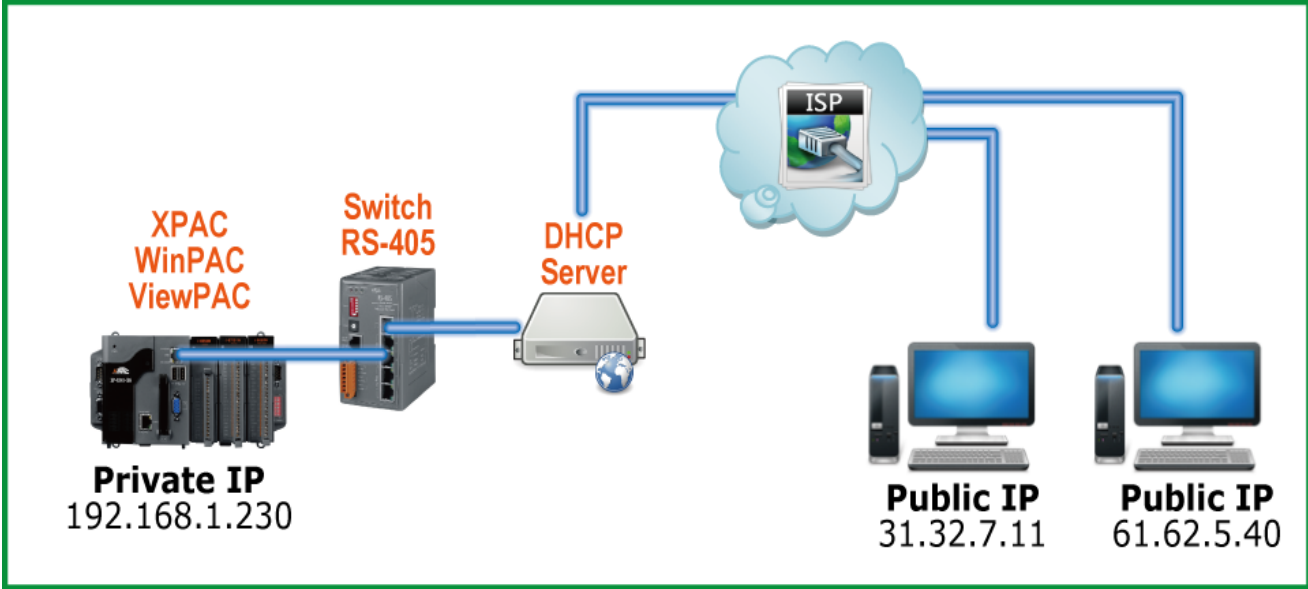
When the connection is established, the PAC Desktop is displayed on the Host PC.



Classification	System and Application FAQ on WinCE PAC				No.	2-001-00	
Author	Eric_Shiu	Version	1.0.1	Date	2018/04/27	Page	10/14

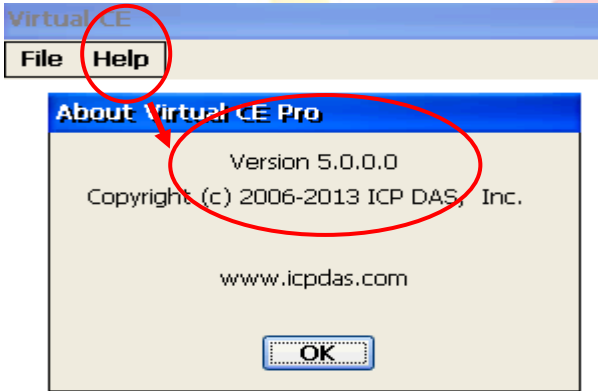
3. After VCEP 5.0, make the Win PAC/ViewPAC active Connection from Server

In some situation, WinPAC/XPAC/ViewPAC only has private IP in LAN, but has to communicate with PC in WAN

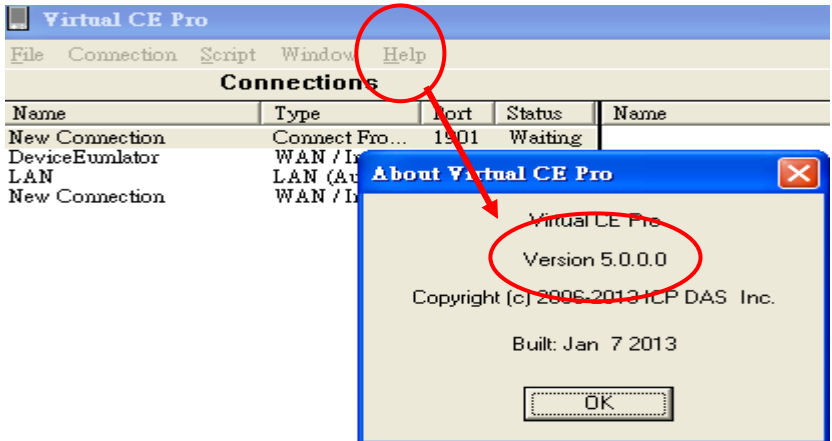


Step 1: Make sure the VCEP server and Client is version 5.0 or later.

Server side



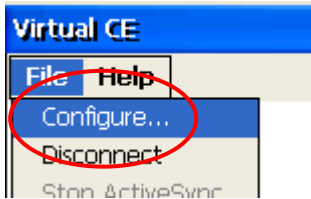
Clientside



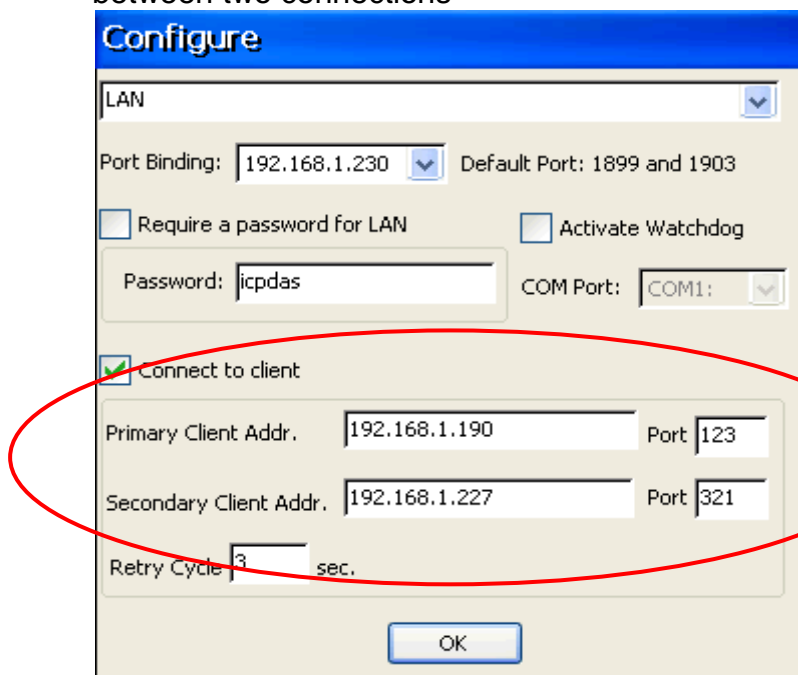
Classification	System and Application FAQ on WinCE PAC				No.	2-001-00	
Author	Eric_Shiu	Version	1.0.1	Date	2018/04/27	Page	11/14

PAC Side:

Step 2: Execute the VCEP, click the File->Configure menu operation.

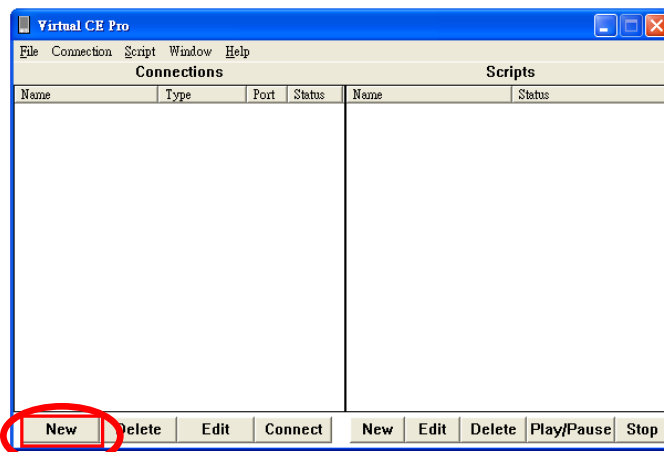


Step 3: Check 'Connect to client' and assign two 'Client Addr.' for active connection from WinPAC/ XPAC/ViewPAC. If the first 'Primary Client Addr.' cannot be connected to, VCEP will connect to the second 'Secondary Client Addr' automatically. If the connection of the first 'Client Addr.' restore, you have to disconnect the second connection manually to connect to the first one. The 'Retry Cycle' means the time between two connections



PC side:

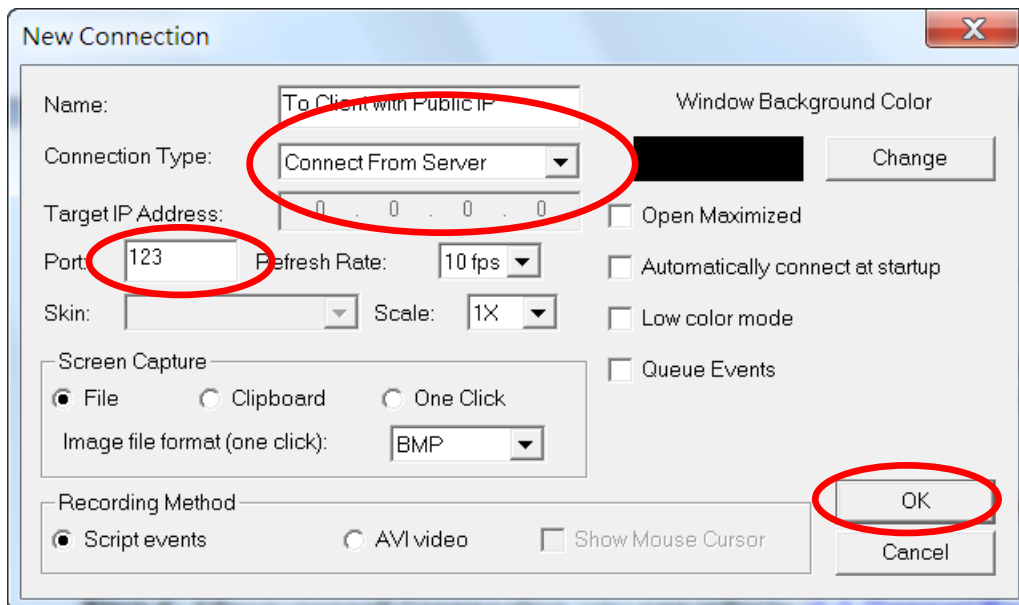
Step 4: Click the "New" button to add a new connection.



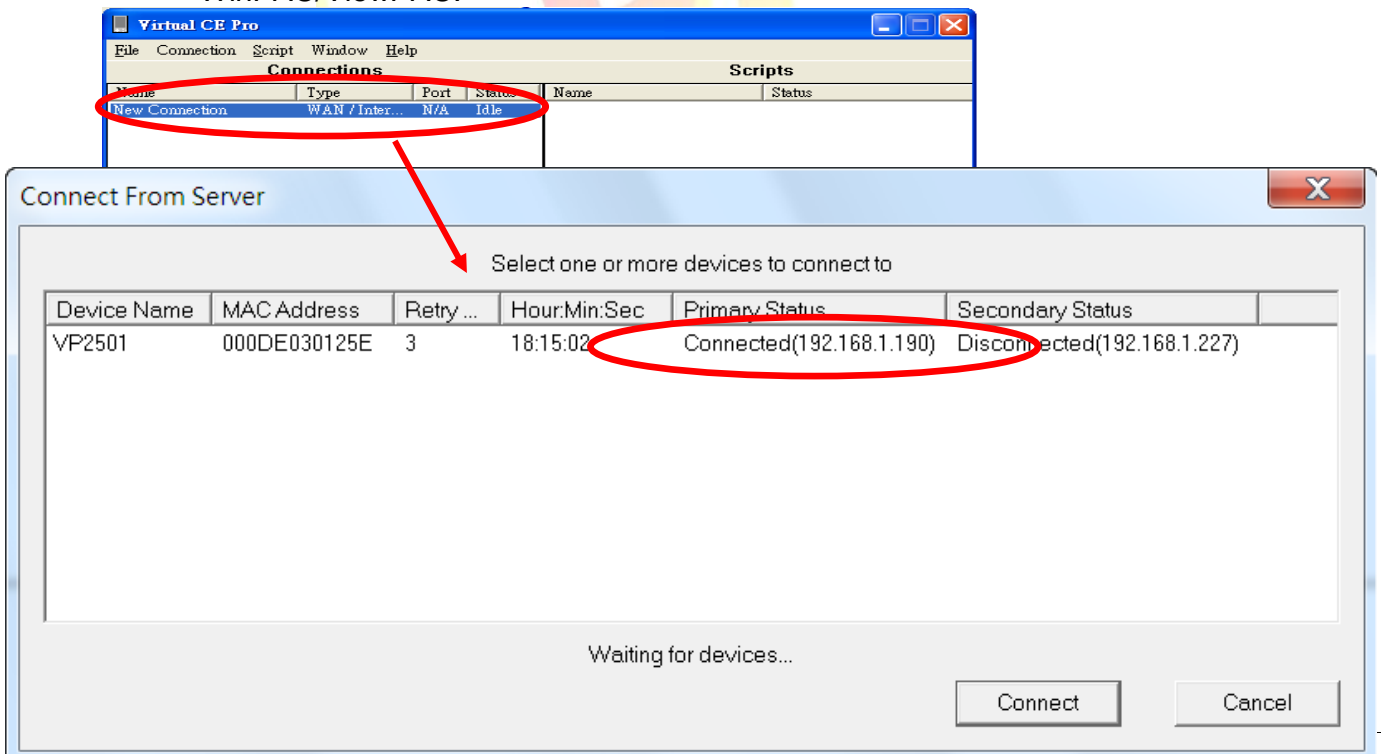
Classification	System and Application FAQ on WinCE PAC				No.	2-001-00	
Author	Eric_Shiu	Version	1.0.1	Date	2018/04/27	Page	12/14

Step 5:

- 5.1 Enter a name in the “Name” textbox
- 5.2 Choose the “Connect From Server” item from the “Connection Type” comboBox
- 5.3 Enter the port number of PAC in the “Port: ” textbox.
(The ‘Port’ number should be the same with the ‘Port’ number at **Step 3.**)
- 5.4 Click the “OK” button.



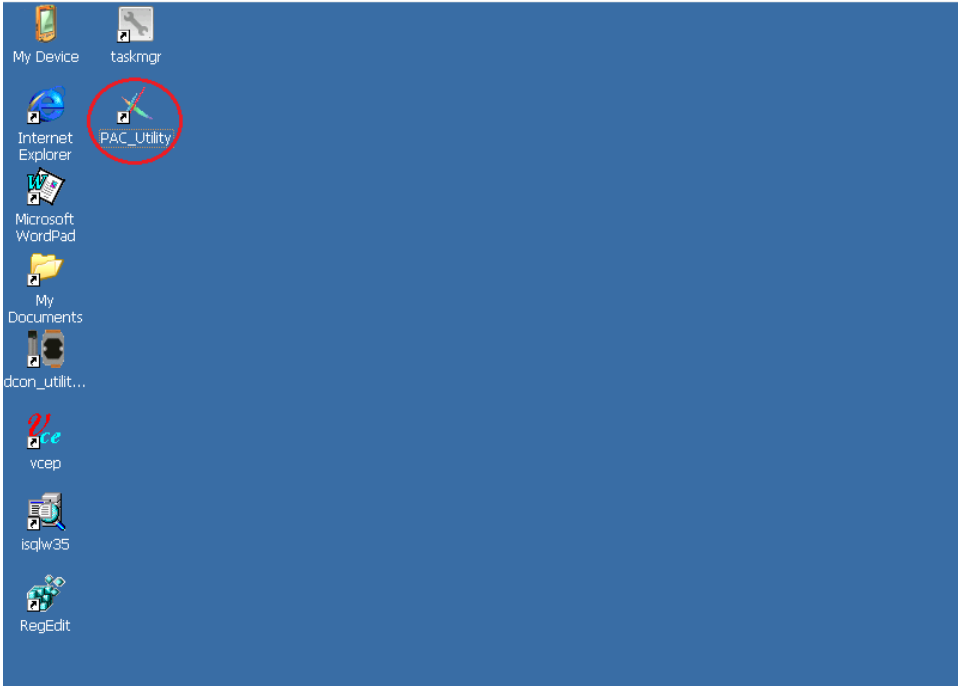
Step 6: Press the ‘Connect’ button and have patient waiting the connection from WinPAC/ViewPAC.



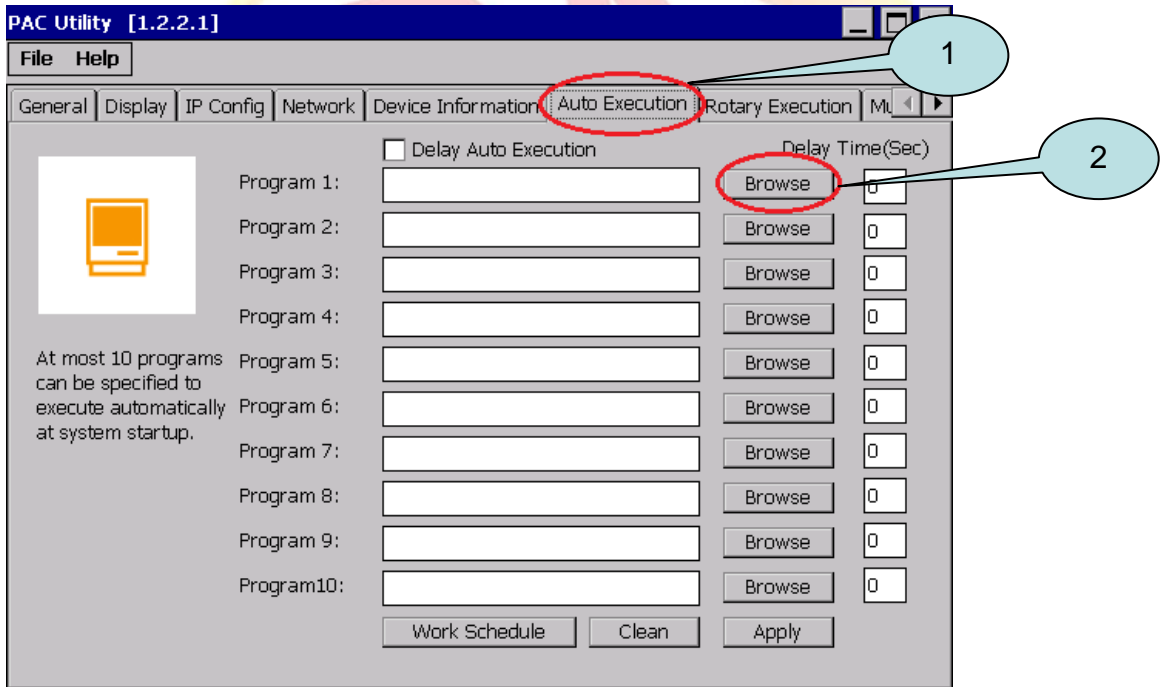
Classification	System and Application FAQ on WinCE PAC				No.	2-001-00	
Author	Eric_Shiu	Version	1.0.1	Date	2018/04/27	Page	13/14

4. Reboot mode for VCEP server always on

Step 1: Click” PAC_UTILITY ”

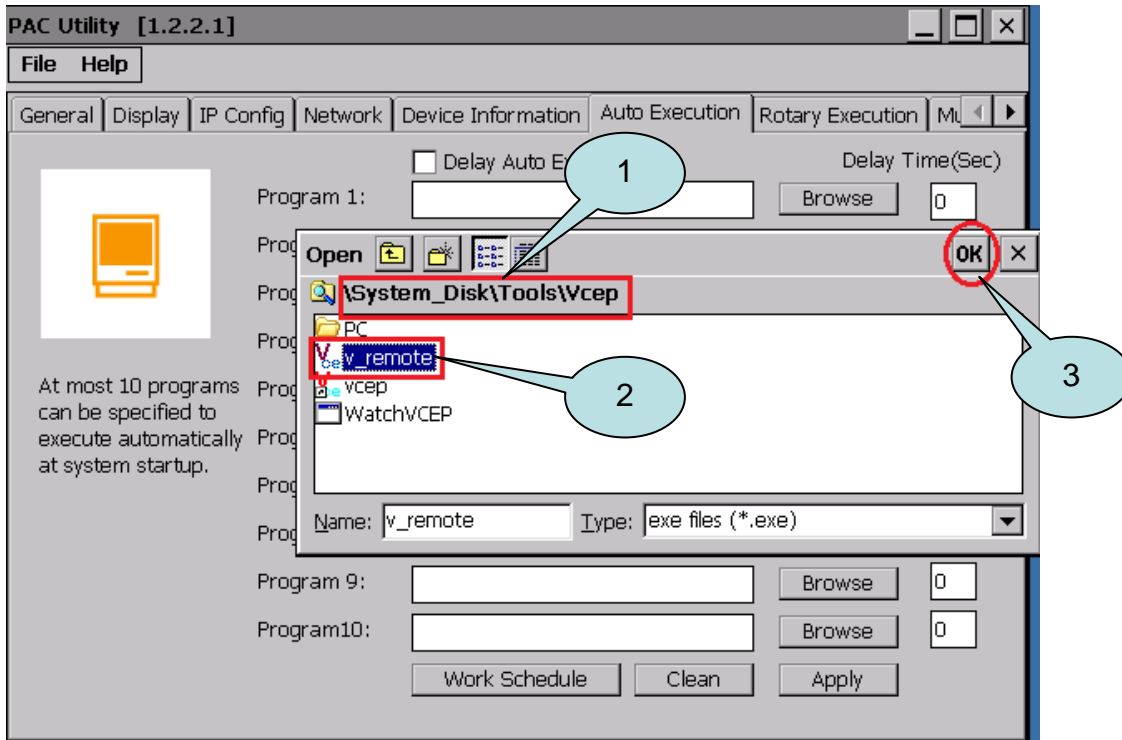


Step 2: Select” Auto Execution ” →Click” Browse ”



Classification	System and Application FAQ on WinCE PAC				No.	2-001-00	
Author	Eric_Shiu	Version	1.0.1	Date	2018/04/27	Page	14/14

Step 3: Select the program by path



Step 4: click " Apply " to save setting

