

Classification	System and Application FAQ on WinCE PAC				No.	1-004-06	
Author	Tunglu-Yu	Version	1.0.1	Date	2018/4/27	Page	1/4

# How to set up a Penmount serial touch panel

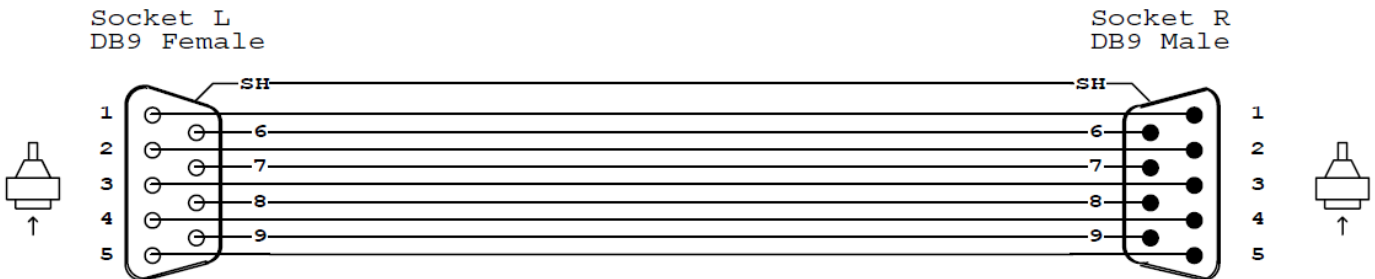
Applies to:

Platform	OS Version	PAC Utility Version
WinPAC	All Versions	All Versions

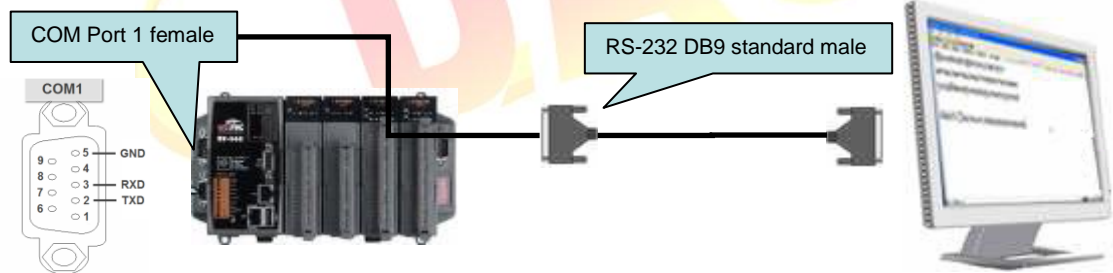
## Tips & Warnings

**⚠** Serial COM Ports 1 and 4 on WP-8000 are standard female/male RS-232 COM Ports. If COM3 is used to connect to the touch panel, you will need a "NULL MODEM".

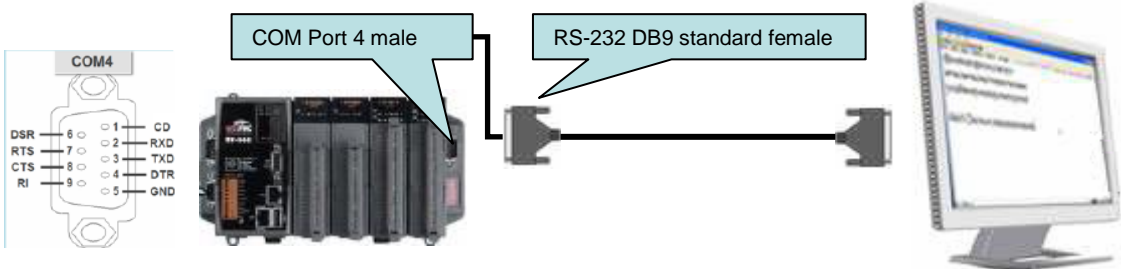
### Standard Wiring



### Connecting to COM1

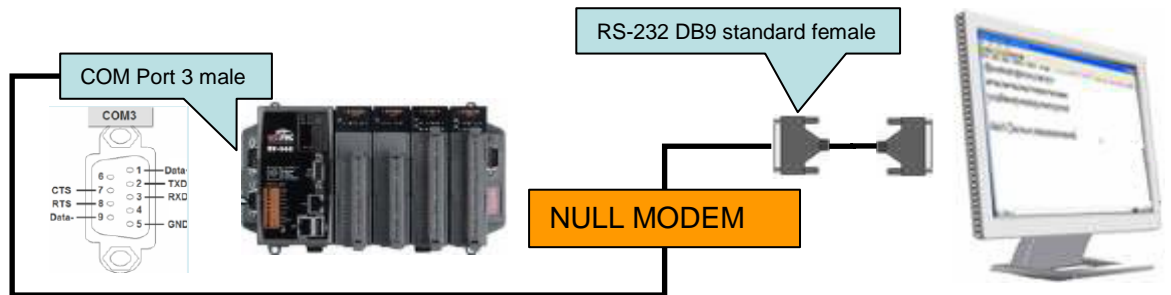


### Connecting to COM4



Classification	System and Application FAQ on WinCE PAC				No.	1-004-06	
Author	Tunglu-Yu	Version	1.0.1	Date	2018/4/27	Page	2/4

### Connecting to COM3



To use a Penmount serial touch panel, perform the following steps:

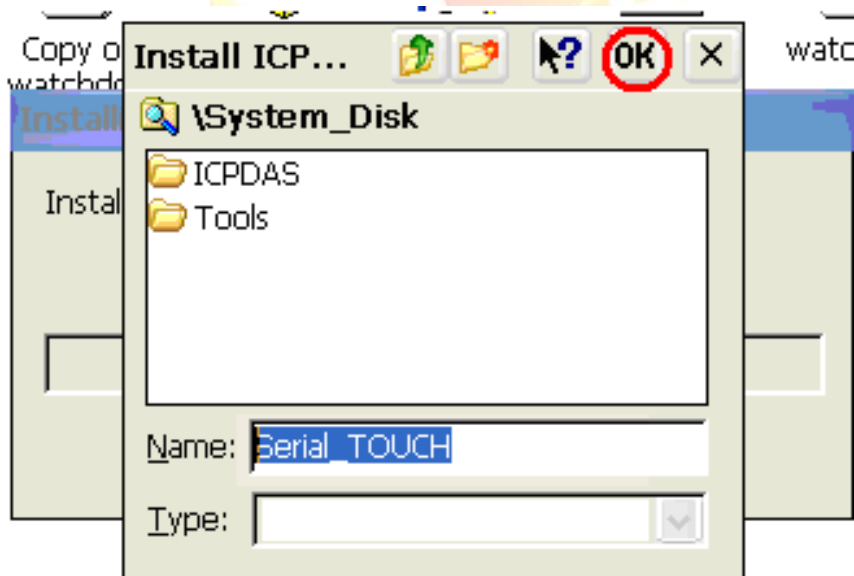
#### Step 1: Locate the driver.

The **PenMount\_Serial\_TOUCH\_V20130904.CAB** is located at

1. **WinPAC file path:** \Micro\_SD\External\_device\_driver\
2. CD: \Wp-5231\System\_Disk\External\_device\_driver\
3. [http://ftp.icpdas.com/pub/cd/winpac\\_am335x/wp-5231/system\\_disk/external\\_device\\_driver/](http://ftp.icpdas.com/pub/cd/winpac_am335x/wp-5231/system_disk/external_device_driver/)

#### Step 2: Install the driver.

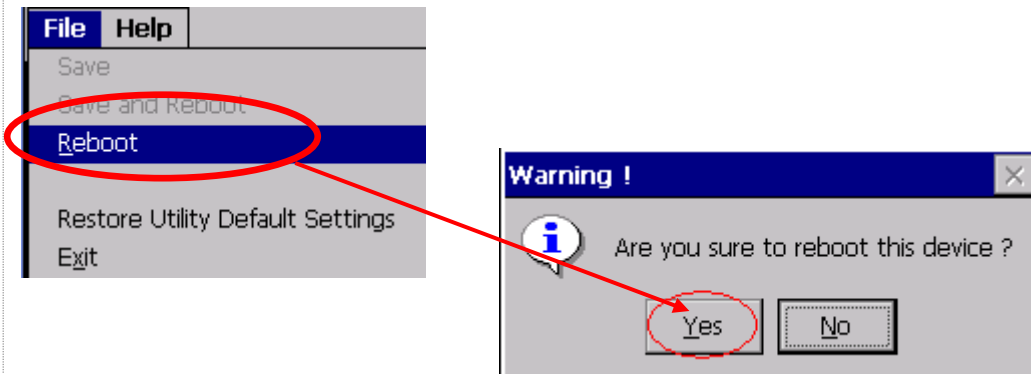
- 2.1. Double-click the **PenMount\_Serial\_TOUCH\_V20130904.CAB**, and then click **“OK”**.



Classification	System and Application FAQ on WinCE PAC				No.	1-004-06	
Author	Tunglu-Yu	Version	1.0.1	Date	2018/4/27	Page	3/4

**Step 3:** Reboot your WinPAC.

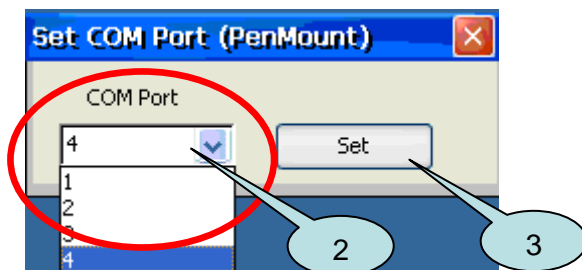
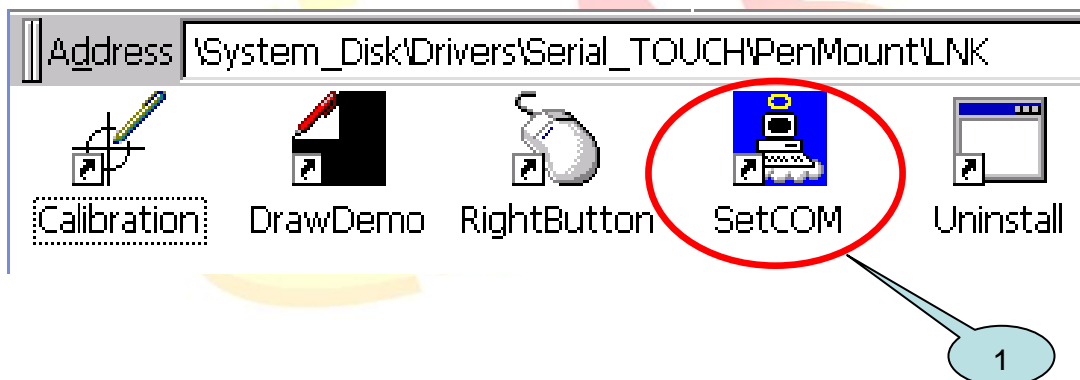
- 3.1. Start the PAC utility on the desktop and click the “File” → “Reboot”.
- 3.2. Click the “Yes” button on the warning window and wait for reboot.



**Step 4:** Calibrate the touch panel.

- 4.1 Select the COM Port connected to the touch panel after rebooting.

1. Click My Device → System\_Disk → Drivers → Serial\_TOUCH → Penmount → LNK → SetCOM.
2. Select the COM port used and press “Set” button.

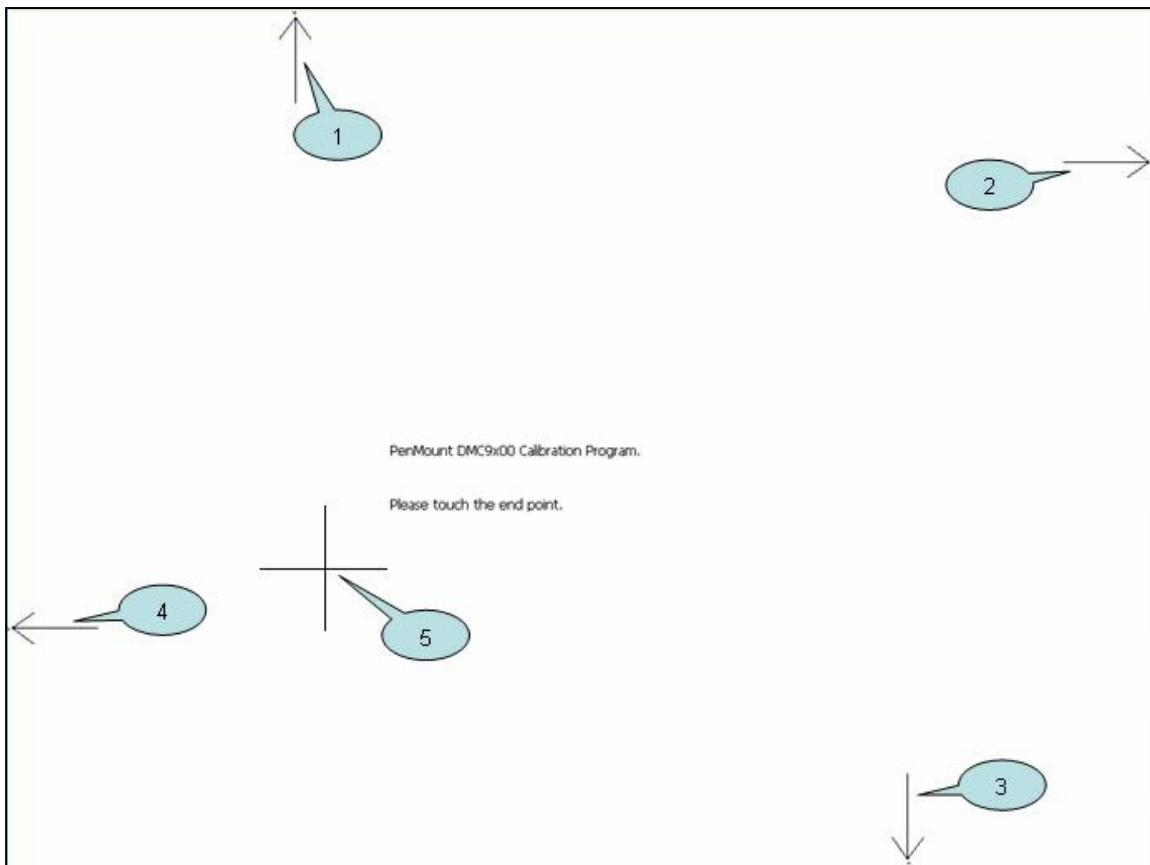


Classification	System and Application FAQ on WinCE PAC				No.	1-004-06	
Author	Tunglu-Yu	Version	1.0.1	Date	2018/4/27	Page	4/4

4.2. Click My Device → System\_Disk → Drivers → Serial\_TOUCH → Penmount → LNK → Calibration.



4.3. Touch the arrowhead on the monitor one by one and then the “+” icon till the program finish.



### Step 5: Reboot the WinPAC

5.1. Start the PAC utility and click the “File” → “Reboot” menu option.

5.2. Click the “Yes” button and wait for reboot.

