

Classification	System and Application FAQ on WinCE PAC				No.	1-004-05	
Author	Eric_Shiu	Version	1.0.1	Date	2018/4/27	Page	1/5

How to set up an ELO serial touch panel

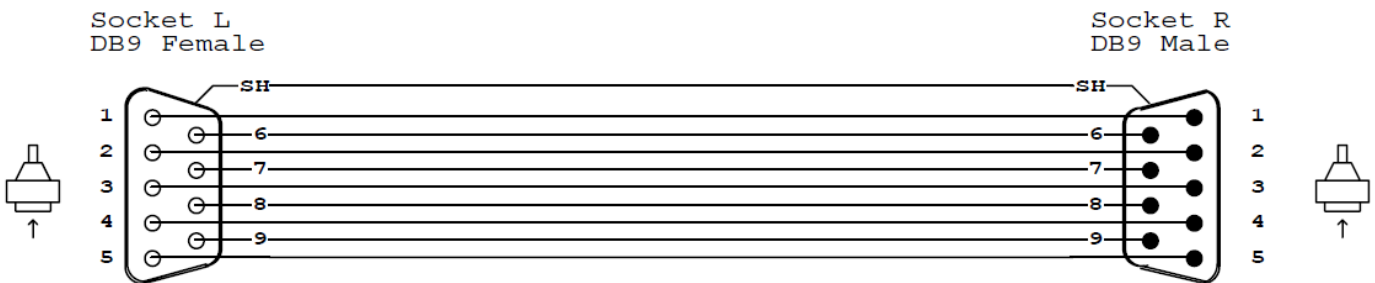
Applies to:

Platform	OS Version	PAC Utility Version
WinPAC	All Versions	All Versions

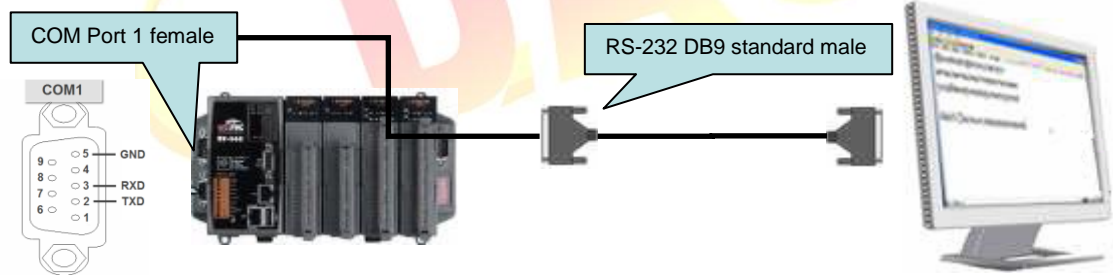
Tips & Warnings

⚠ Serial COM Ports 1 and 4 on WP-8000 are standard female/male RS-232 COM Ports. If COM3 is used to connect to the touch panel, you will need a "NULL MODEM".

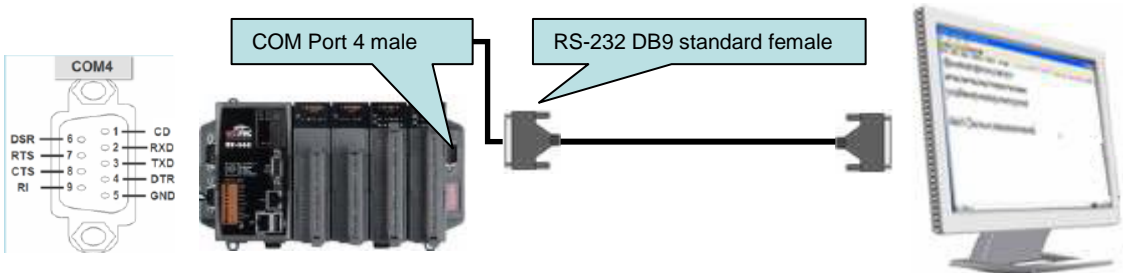
Standard Wiring



Connecting to COM1

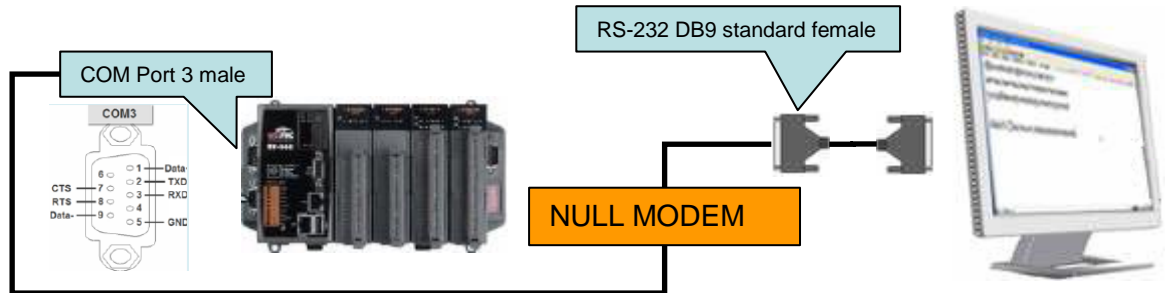


Connecting to COM4



Classification	System and Application FAQ on WinCE PAC				No.	1-004-05	
Author	Eric_Shiu	Version	1.0.1	Date	2018/4/27	Page	2/5

Connecting to COM3



To use an ELO serial touch panel, perform the following steps:

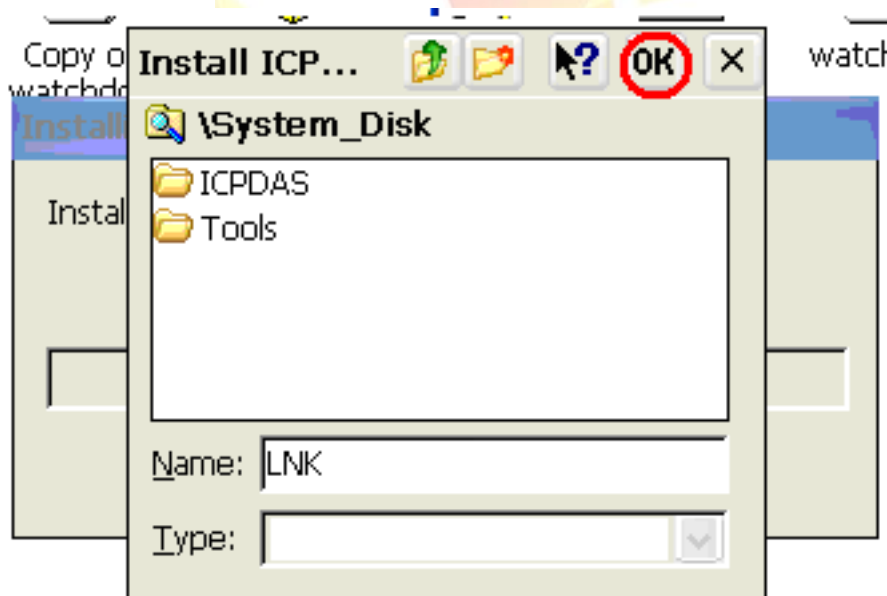
Step 1: Locate the driver.

The **ELO_Serial_TOUCH_V20100507.cab** is located at

1. **WinPAC file path:** \System_Disk\External_device_driver\
2. CD: \Wp-5231\System_Disk\External_device_driver\
3. http://ftp.icpdas.com/pub/cd/winpac_am335x/wp-5231/system_disk/external_device_driver/

Step 2: Install the driver.

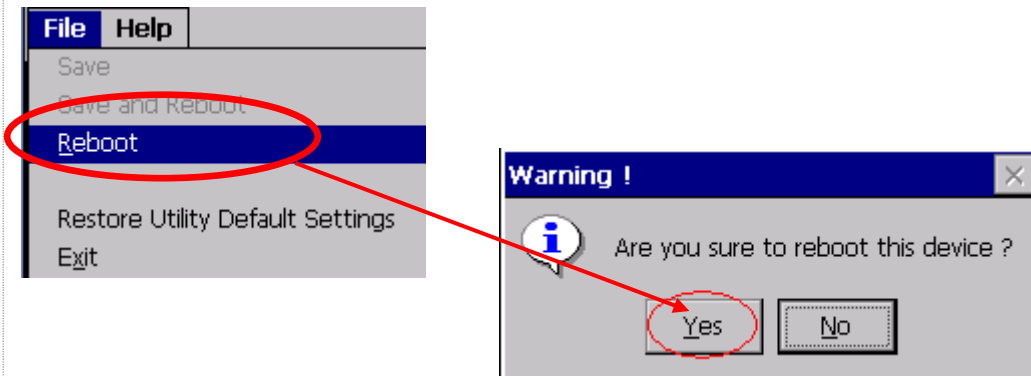
- 2.1. Double click the **ELO_Serial_TOUCH_V20100507.cab**, and then click "OK".



Classification	System and Application FAQ on WinCE PAC				No.	1-004-05	
Author	Eric_Shiu	Version	1.0.1	Date	2018/4/27	Page	3/5

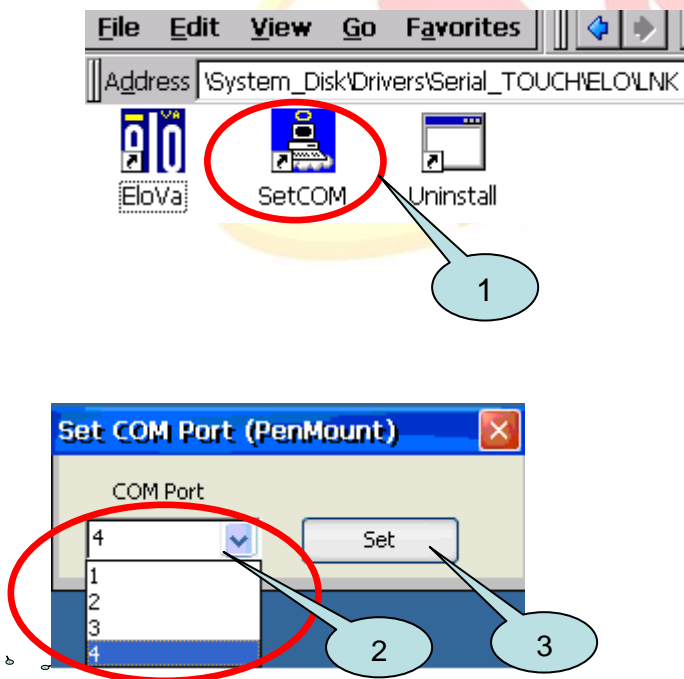
Step 3: Reboot your WinPAC.

- 3.1. Start the PAC utility on the desktop and click the “File” → “Reboot”.
- 3.2. Click the “Yes” button on the warning window and wait for reboot.



Step 4: Calibrate the touch panel.

- 4.1. Select the COM Port connected to the touch panel after rebooting.
 1. Click My Device → System_Disk → Drivers → Serial_TOUCH → ELO → LNK → SetCOM
 2. Select the COM port used and press “Set” button.

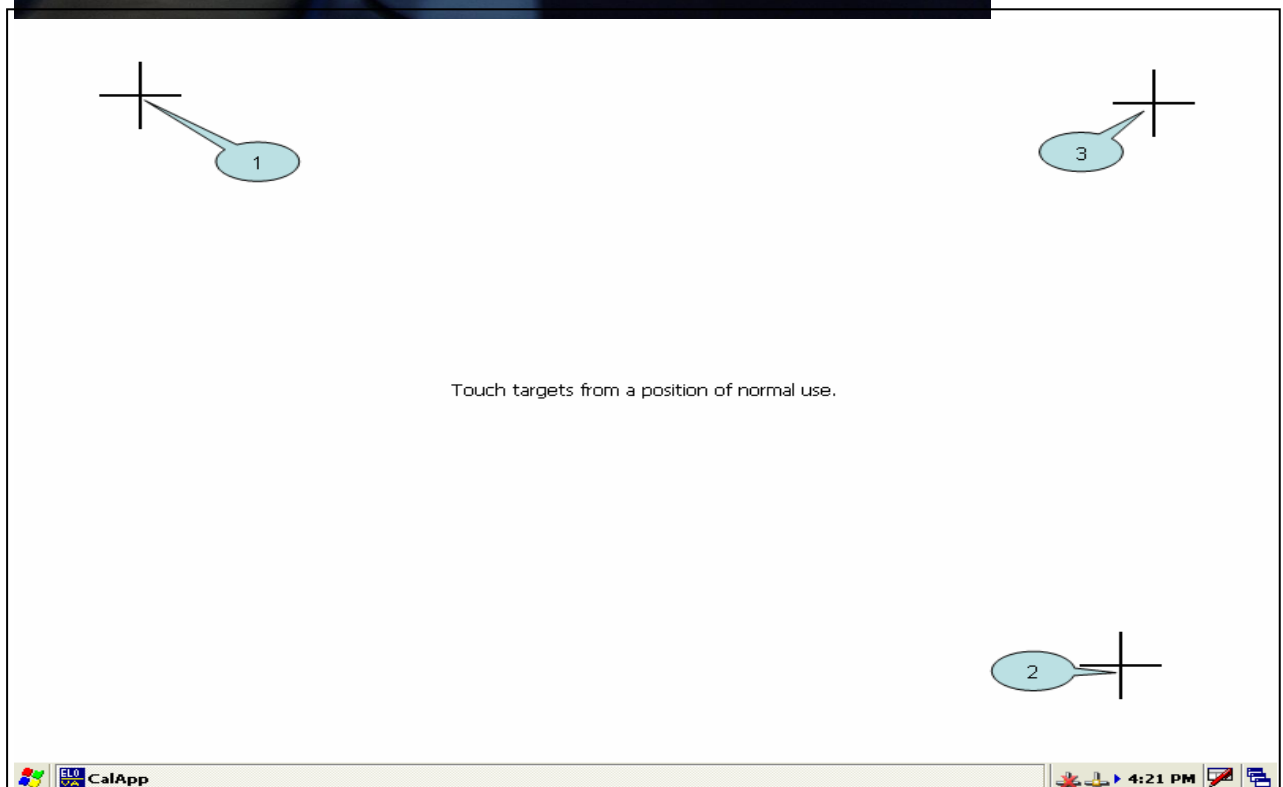
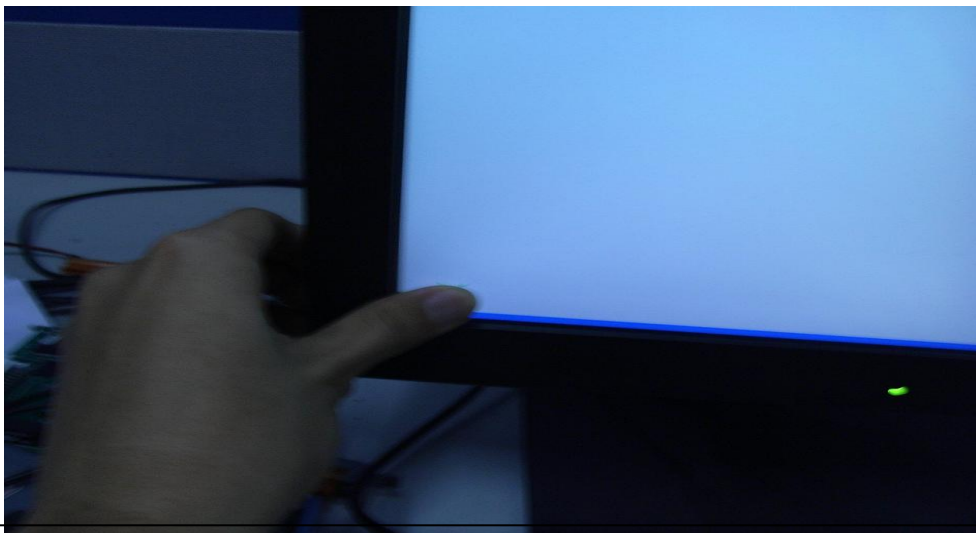


Classification	System and Application FAQ on WinCE PAC				No.	1-004-05	
Author	Eric_Shiu	Version	1.0.1	Date	2018/4/27	Page	4/5

4.2. Click My Device → System_Disk → Drivers → Serial_TOUCH → ELO → LNK → Serial_EloVa.



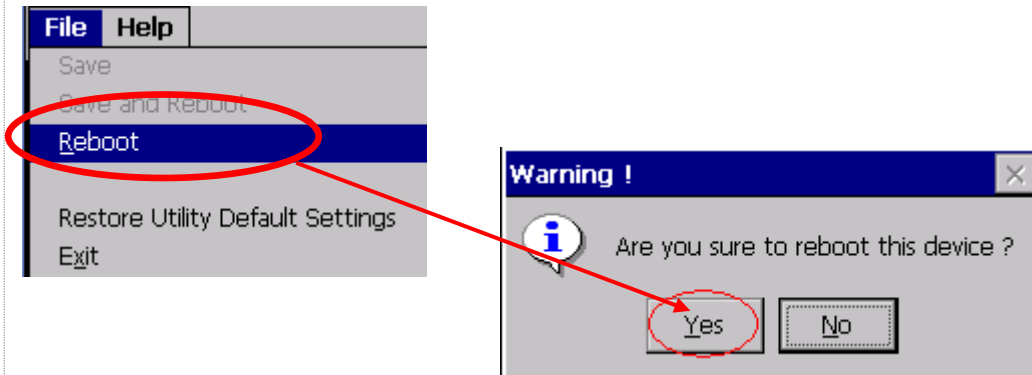
4.3. Touch the “+” icons on the monitor one by one to perform the calibration process.



Classification	System and Application FAQ on WinCE PAC				No.	1-004-05	
Author	Eric_Shiu	Version	1.0.1	Date	2018/4/27	Page	5/5

Step 5: Reboot WinPAC.

- 5.1. Start the Win PAC utility and click the **“File”** → **“Reboot”** menu option.
- 5.2. Click the **“Yes”** button and wait for reboot.



ICP
DAS