

Classification	System and Application FAQ on WinCE PAC				No.	5-004-00	
Author	Cid	Version	1.0.0	Date	2018/04/23	Page	1/23

How to use SQL CE client to connect to SQL server?

Applies to:

<i>Platform</i>	<i>OS Version</i>	<i>PAC Utility Version</i>
<i>WinPAC</i>	<i>All Versions</i>	<i>All Versions</i>
<i>ViewPAC</i>	<i>All Versions</i>	<i>All Versions</i>

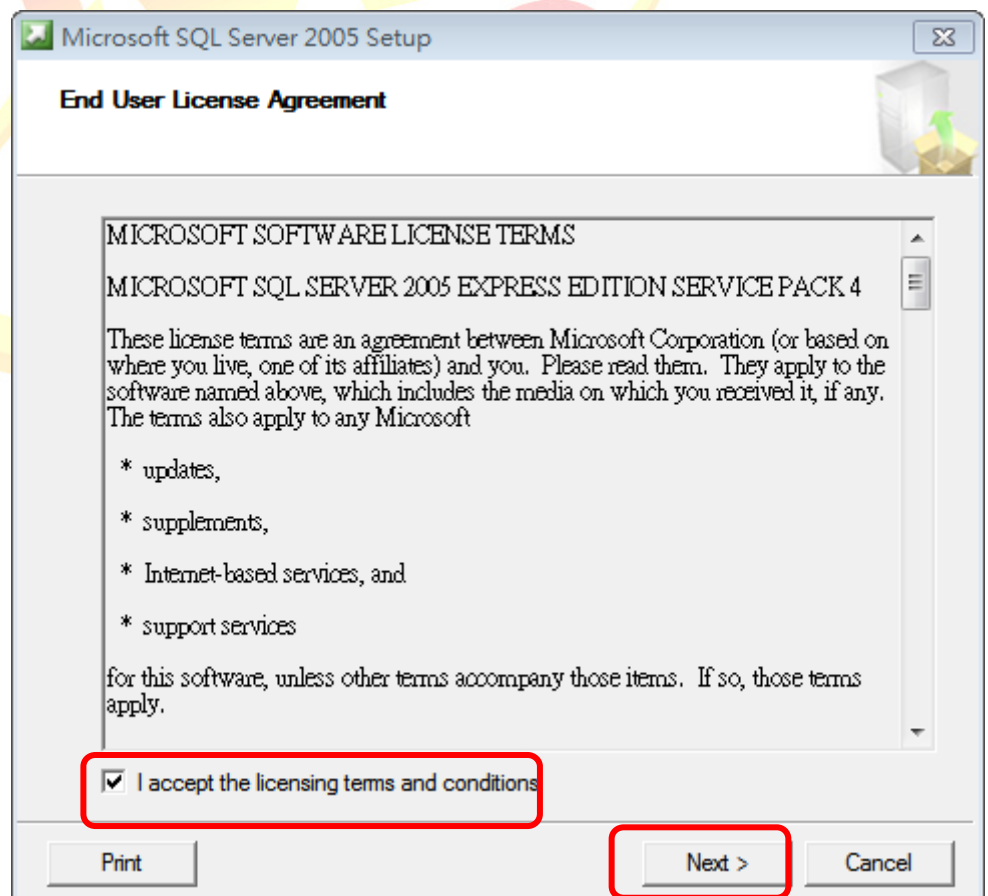
We take 2 file “SQL Server 2005 Express Edition” and SQL Server Management Studio Express for example, you also use other edition.

1. SQL Server 2005 Express Edition Service Pack 4 (SQLEXPRESS.EXE)
<http://www.microsoft.com/downloads/en/details.aspx?displaylang=en&FamilyID=26435597-b28e-4568-9d16-017bdf47abdc>
2. SQL Server Management Studio Express Service Pack 4 (SQLServer2005_SSMSEE.msi)
<http://www.microsoft.com/downloads/en/details.aspx?displaylang=en&FamilyID=76ea83da-4797-4f11-a834-456ee9dc3764>

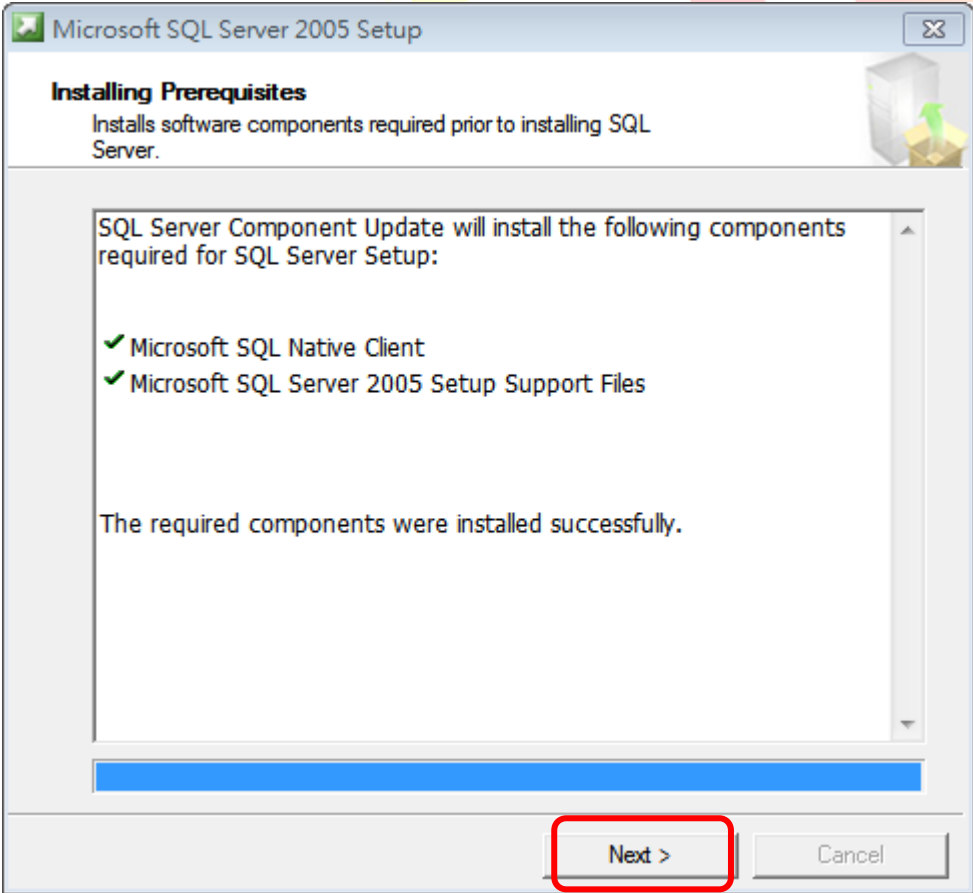
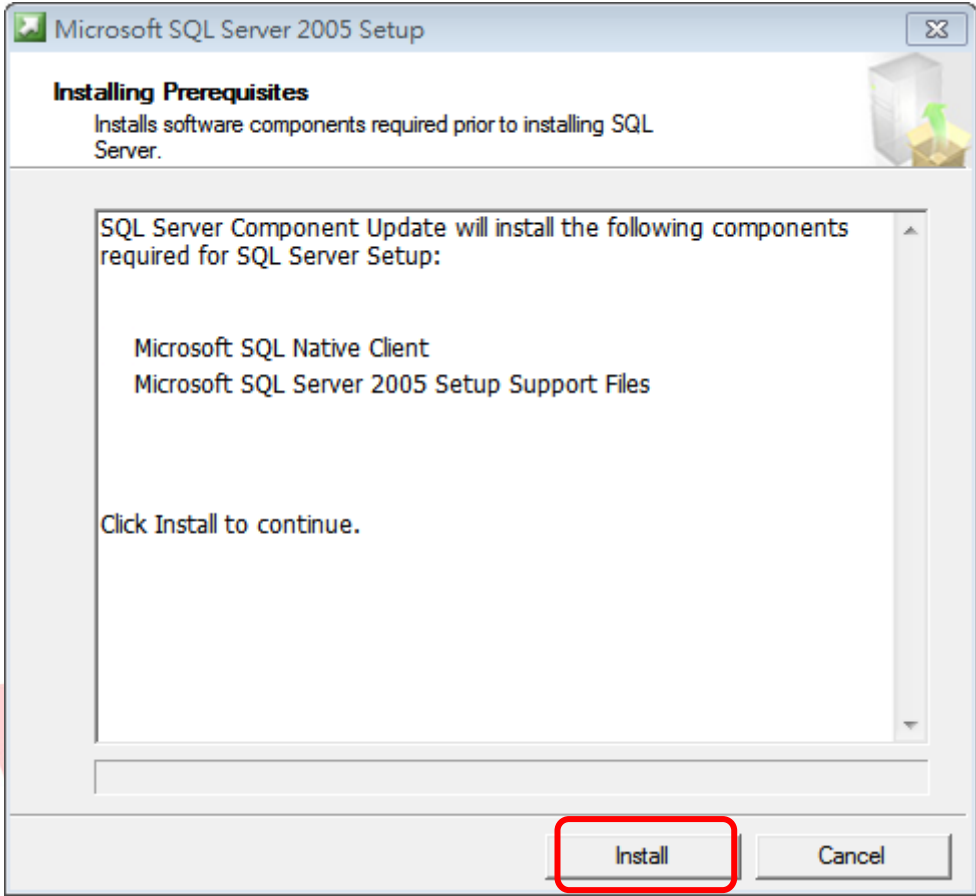
[Install Software]

STEP 1: Install SQL Server 2005 Express Edition

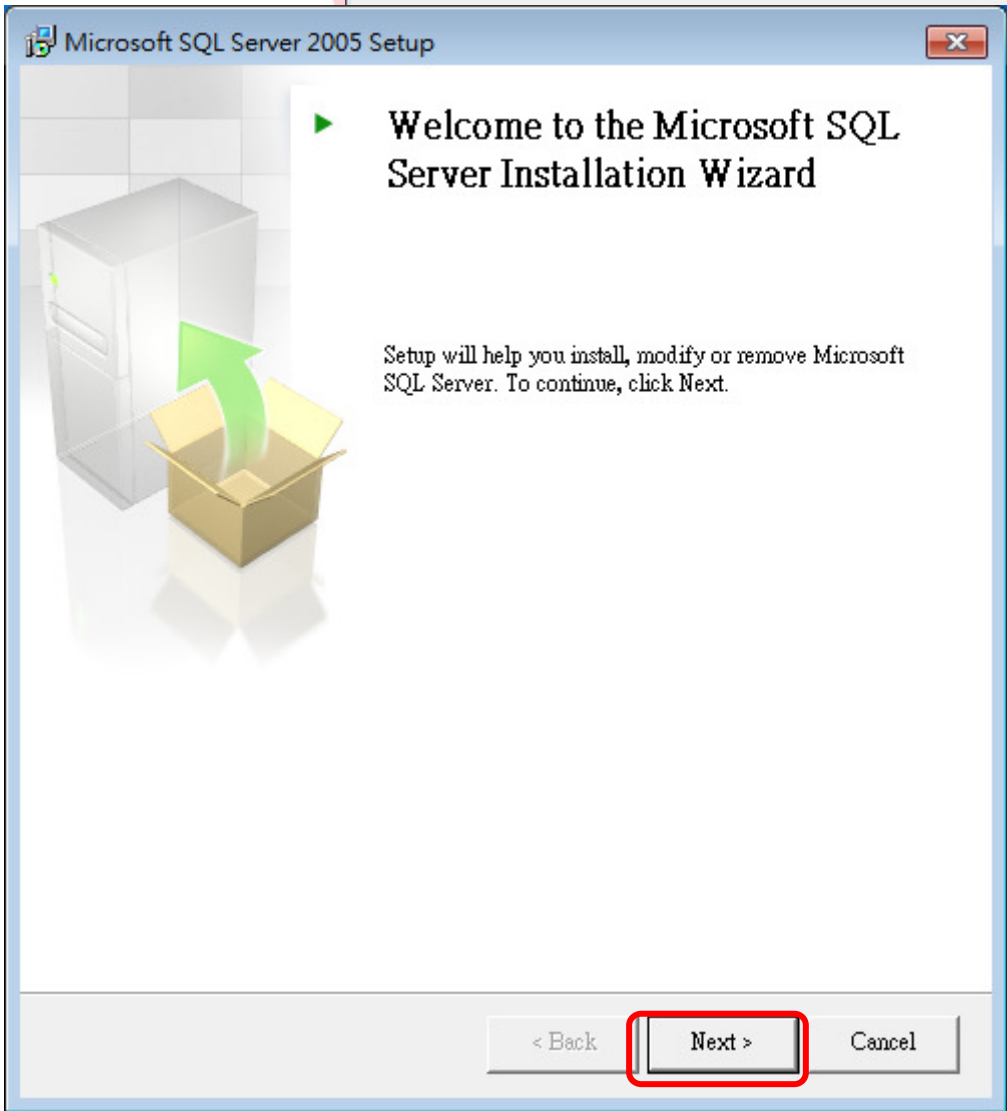
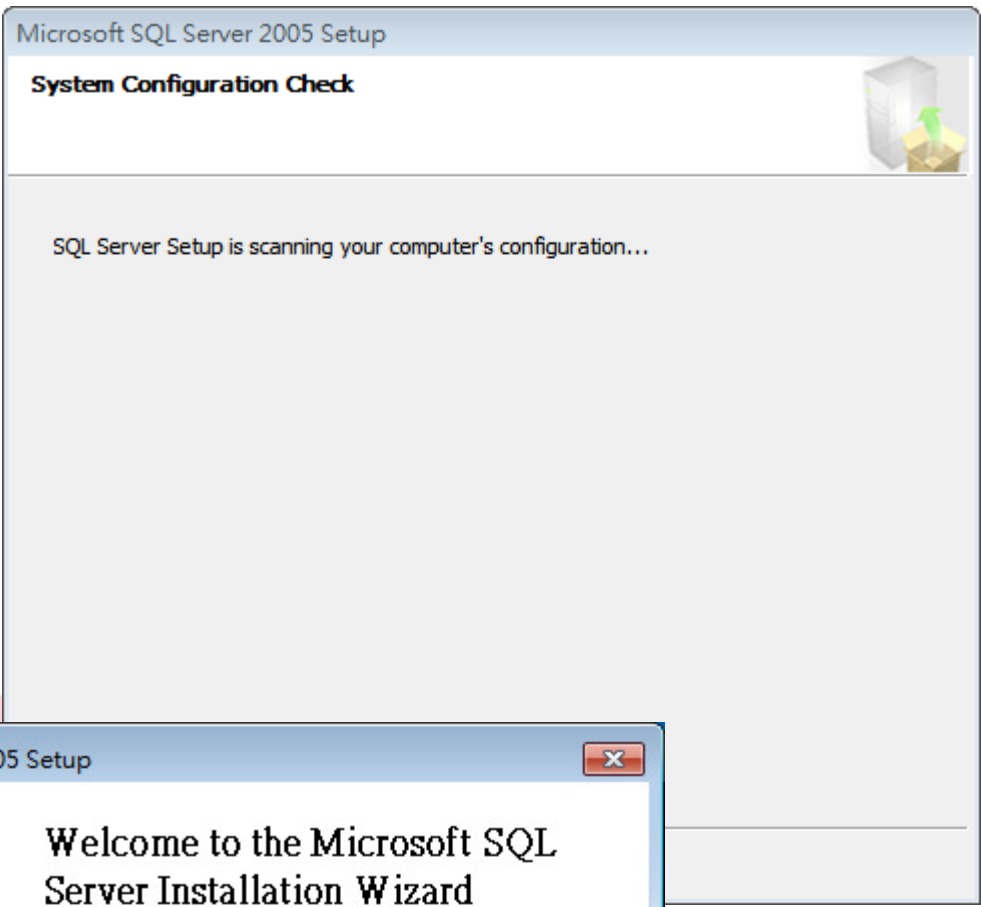
There are two places need to be adjusted.



Classification	System and Application FAQ on WinCE PAC				No.	5-004-00	
Author	Cid	Version	1.0.0	Date	2018/04/23	Page	2/23



Classification	System and Application FAQ on WinCE PAC				No.	5-004-00	
Author	Cid	Version	1.0.0	Date	2018/04/23	Page	3/23



Classification	System and Application FAQ on WinCE PAC				No.	5-004-00	
Author	Cid	Version	1.0.0	Date	2018/04/23	Page	4/23

Microsoft SQL Server 2005 Setup

System Configuration Check

Wait while the system is checked for potential installation problems.

Success 13 Total 0 Error
13 Success 0 Warning

Details:

Action	Status	Message
SQL Server Edition Operating System ...	Success	
Minimum Hardware Requirement	Success	
Pending Reboot Requirement	Success	
Default Installation Path Permission Re...	Success	
Internet Explorer Requirement	Success	
COM Plus Catalog Requirement	Success	
ASP.Net Version Registration Require...	Success	
Minimum MDAC Version Requirement	Success	
Edition Change Check	Success	

Filter Stop Report

Help **Next >**

Microsoft SQL Server 2005 Setup

Registration Information

The following information will be used to register the software.

The Name field must be filled in prior to proceeding. The Company field is optional.

Name:

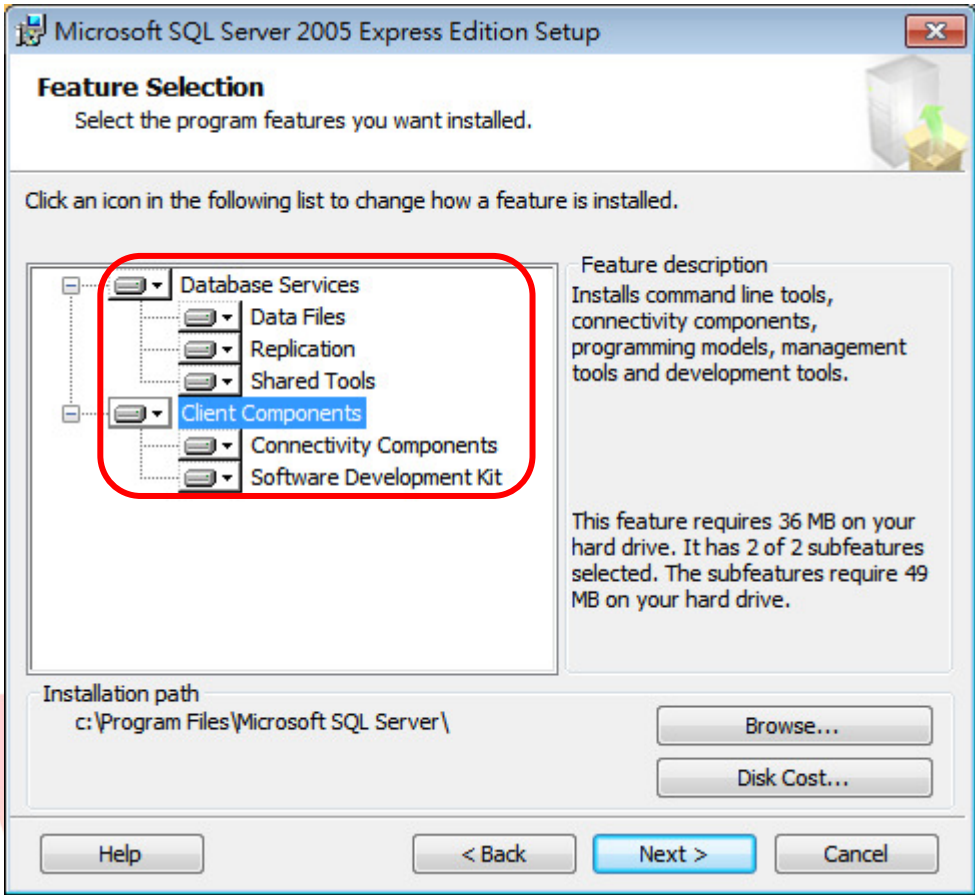
Company:

Hide advanced configuration options

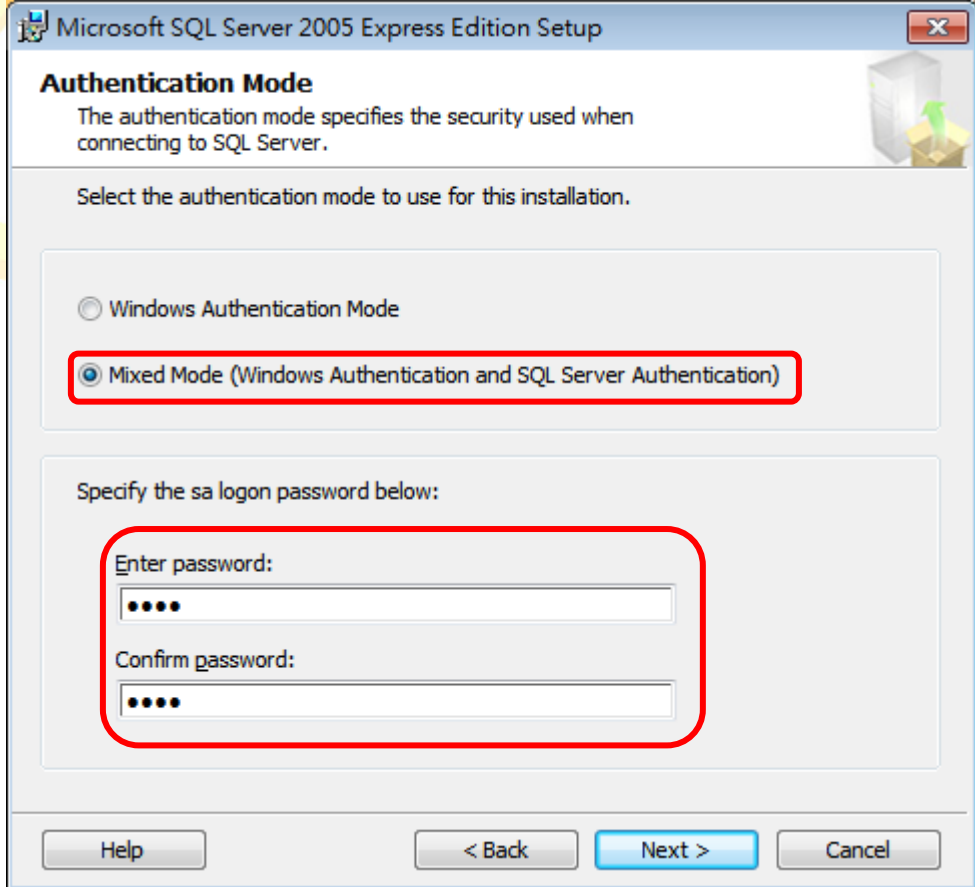
Help **Next >** Cancel

Classification	System and Application FAQ on WinCE PAC				No.	5-004-00	
Author	Cid	Version	1.0.0	Date	2018/04/23	Page	5/23

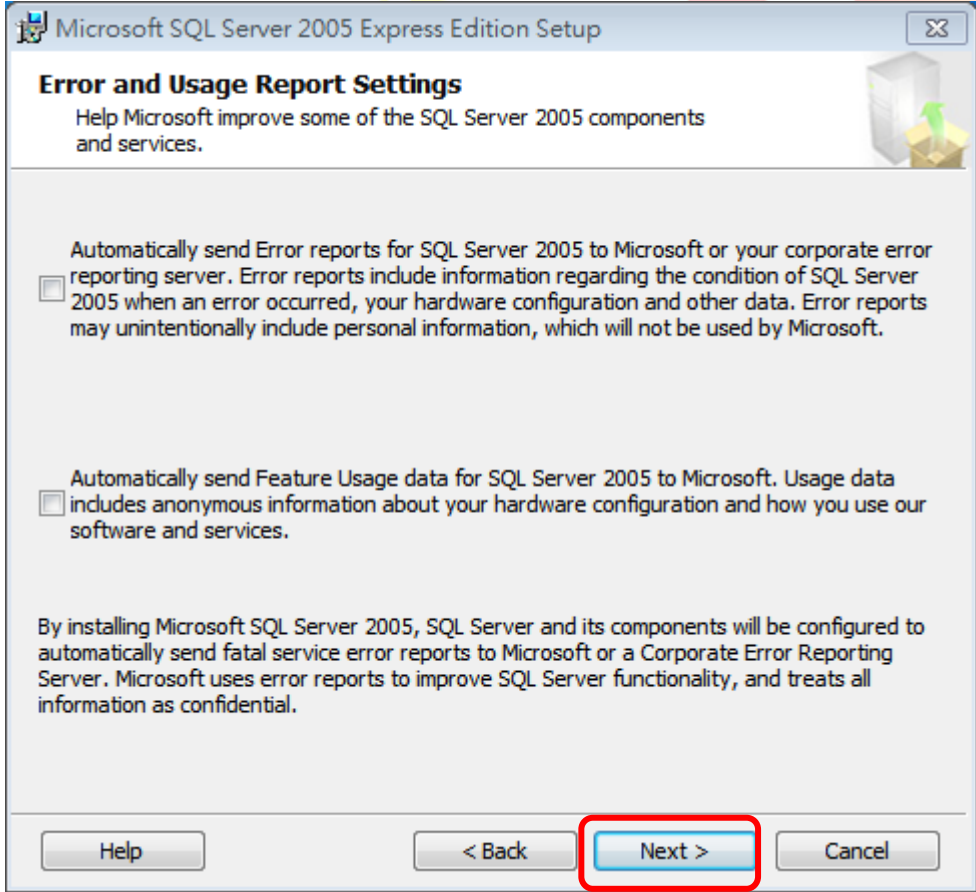
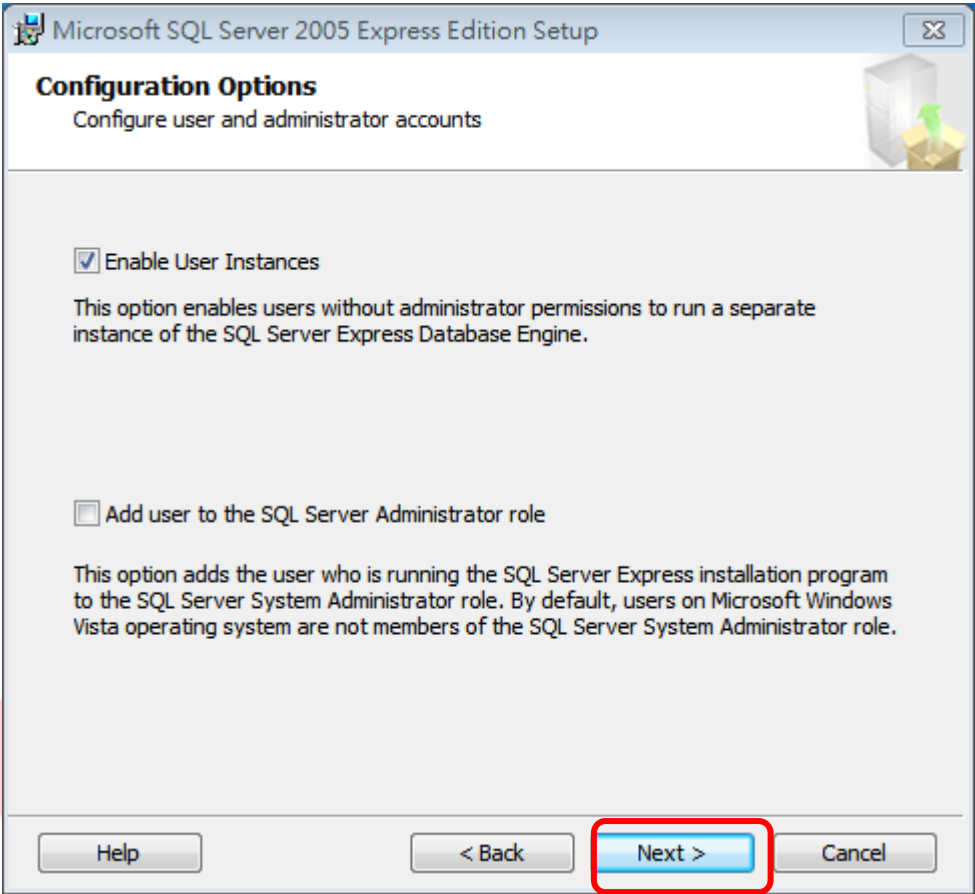
STEP 1.1: Select all components for Install.



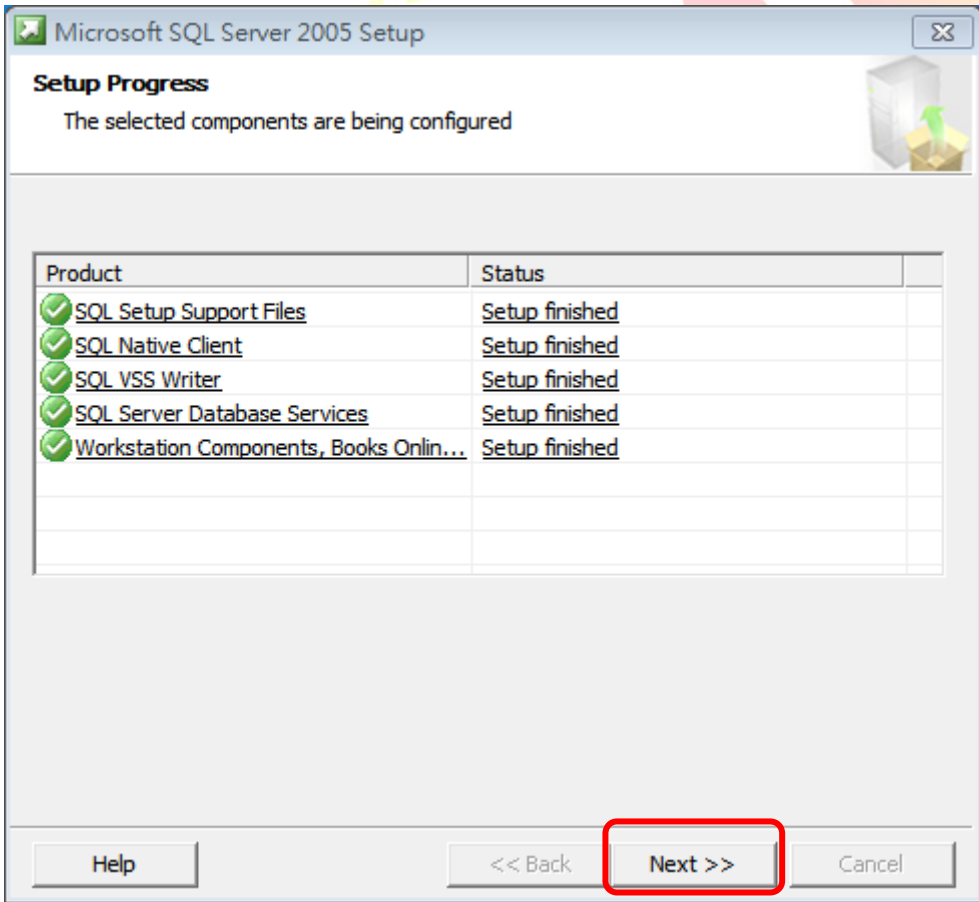
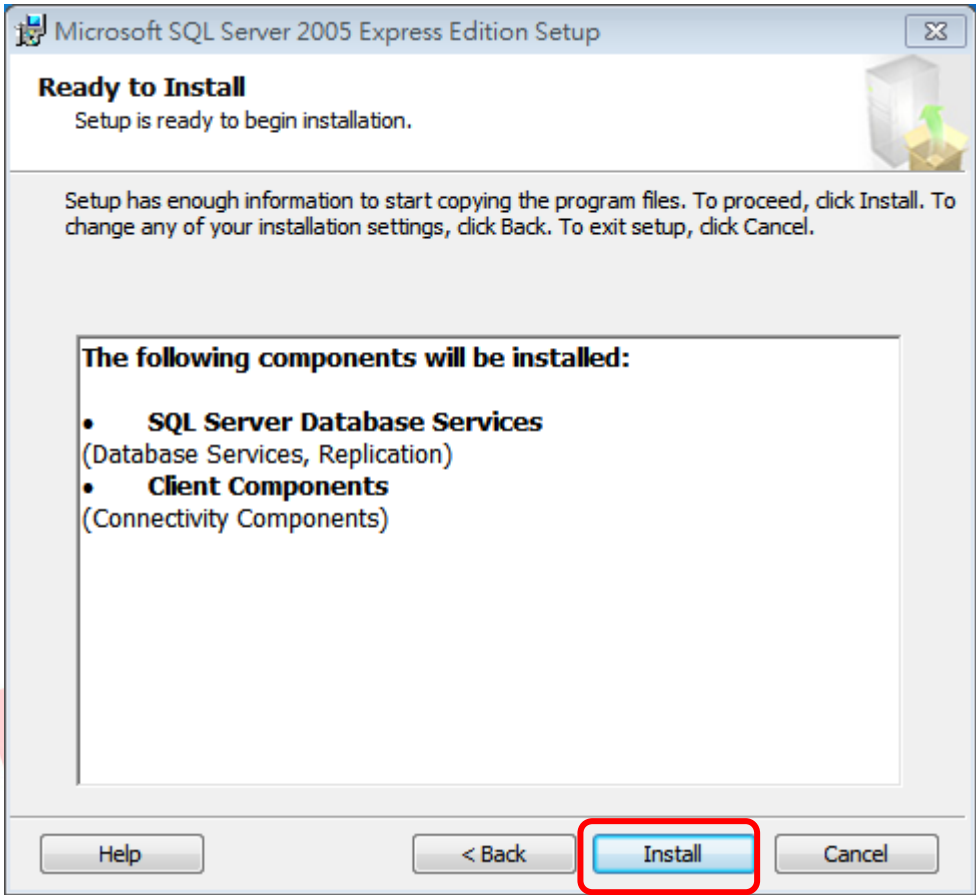
STEP 1.2: Choose “Mixed mode” and set the password. Please remember the password which will be used in the following steps.



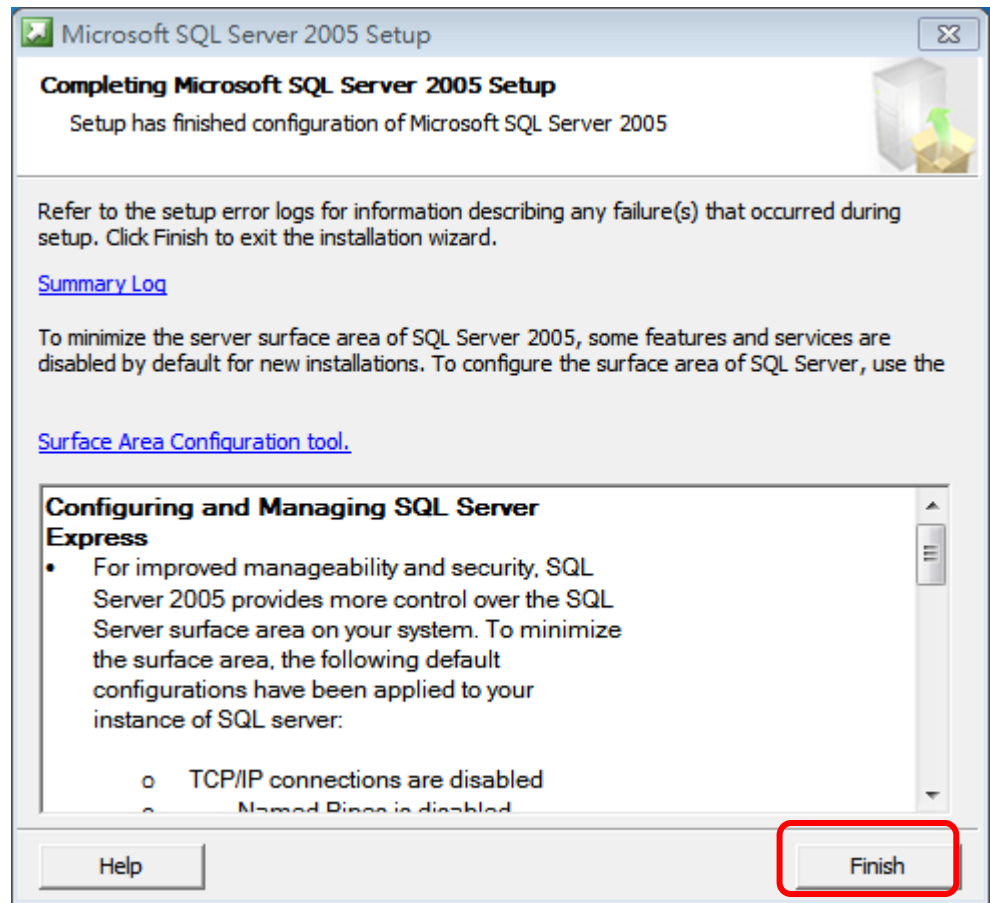
Classification	System and Application FAQ on WinCE PAC				No.	5-004-00	
Author	Cid	Version	1.0.0	Date	2018/04/23	Page	6/23



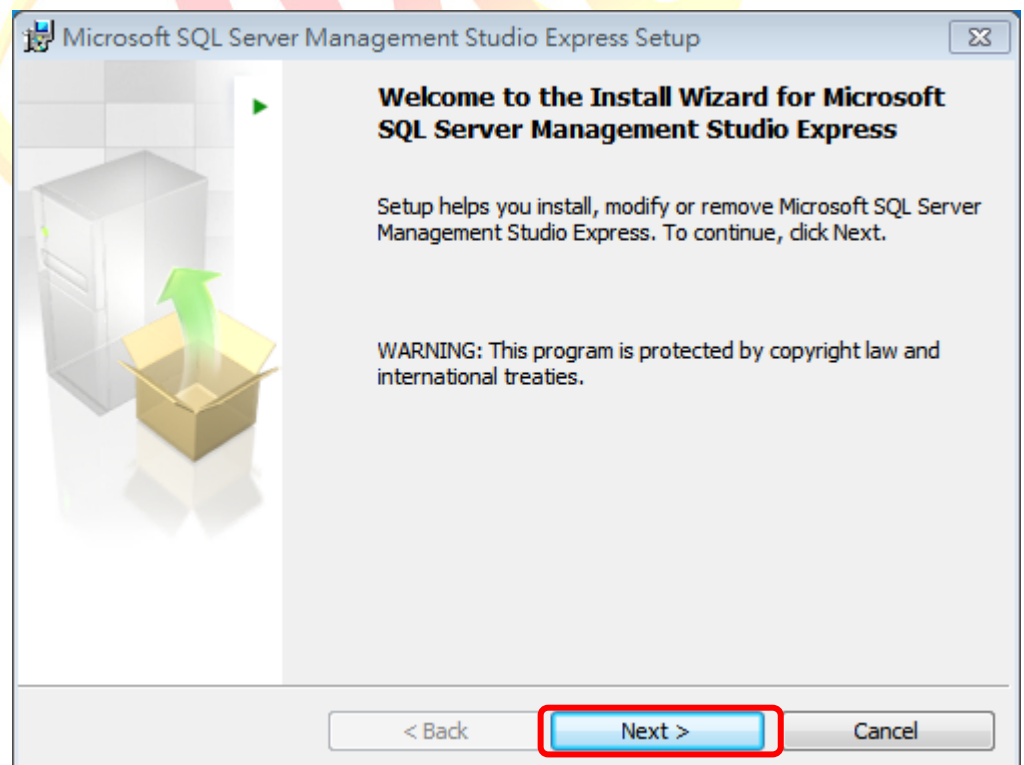
Classification	System and Application FAQ on WinCE PAC				No.	5-004-00	
Author	Cid	Version	1.0.0	Date	2018/04/23	Page	7/23



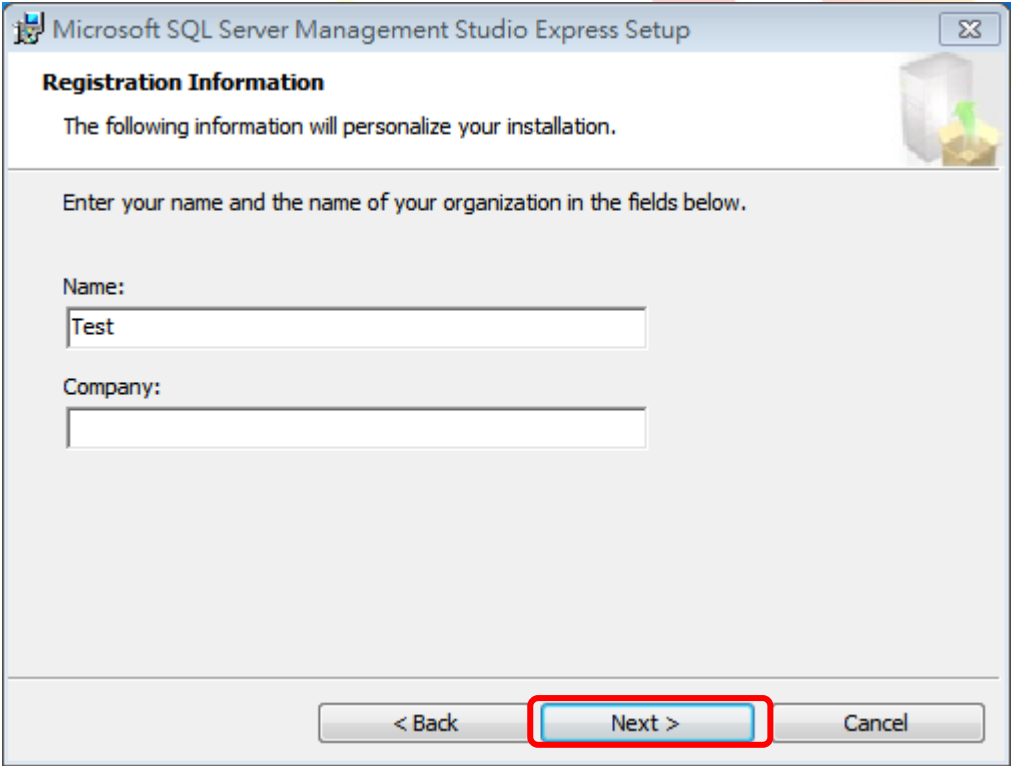
Classification	System and Application FAQ on WinCE PAC				No.	5-004-00	
Author	Cid	Version	1.0.0	Date	2018/04/23	Page	8/23



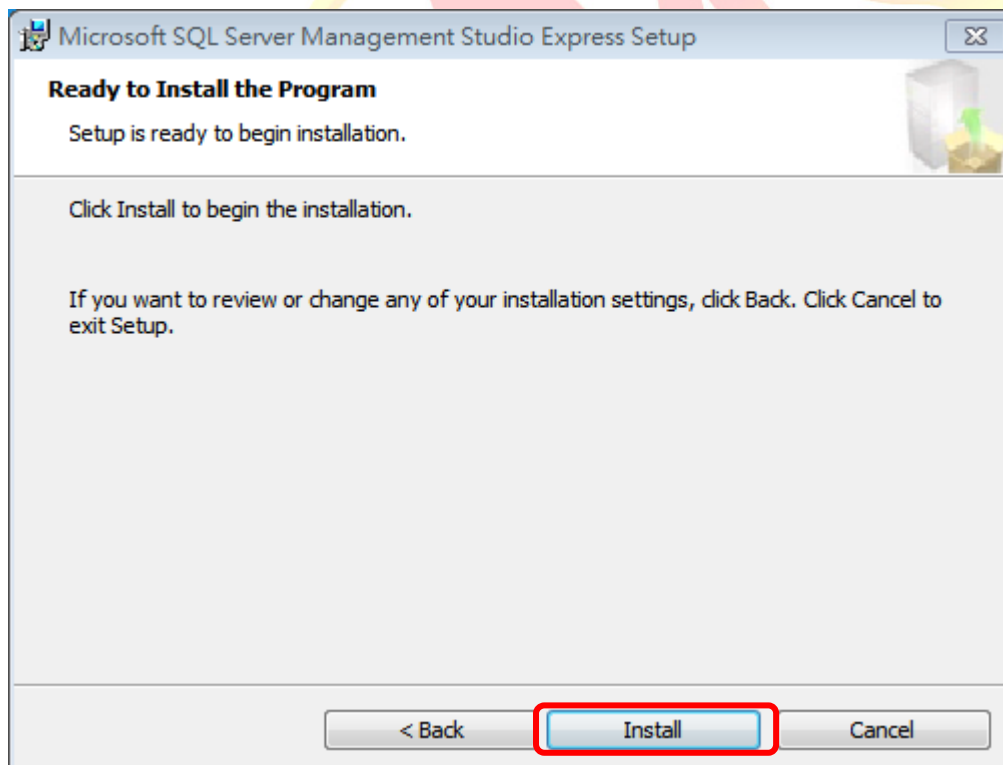
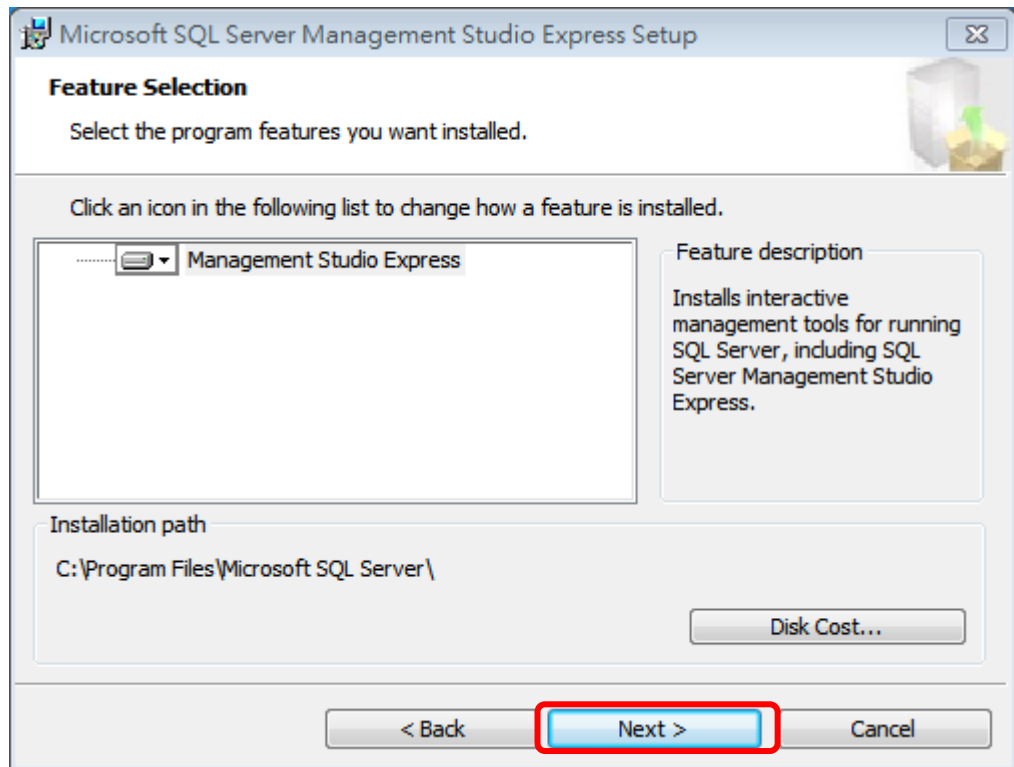
STEP 2: Install SQL Server Management Studio Express with the Setup Wizard



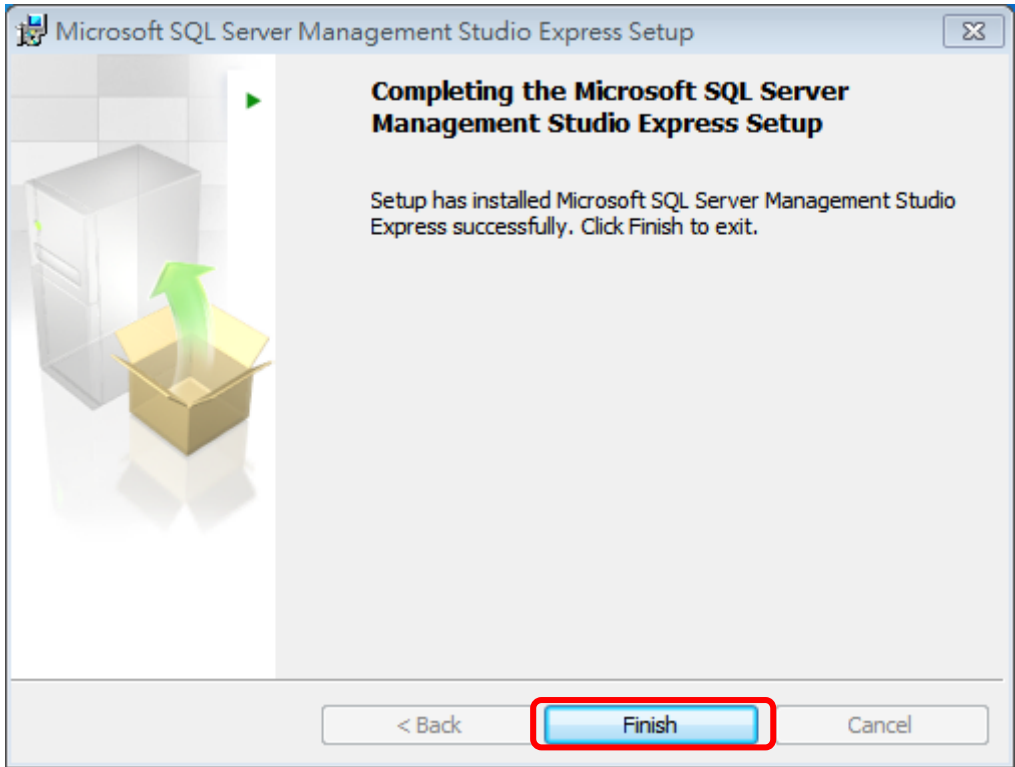
Classification	System and Application FAQ on WinCE PAC					No.	5-004-00
Author	Cid	Version	1.0.0	Date	2018/04/23	Page	9/23



Classification	System and Application FAQ on WinCE PAC					No.	5-004-00
Author	Cid	Version	1.0.0	Date	2018/04/23	Page	10/23



Classification	System and Application FAQ on WinCE PAC				No.	5-004-00	
Author	Cid	Version	1.0.0	Date	2018/04/23	Page	11/23



[Config SQL Server]

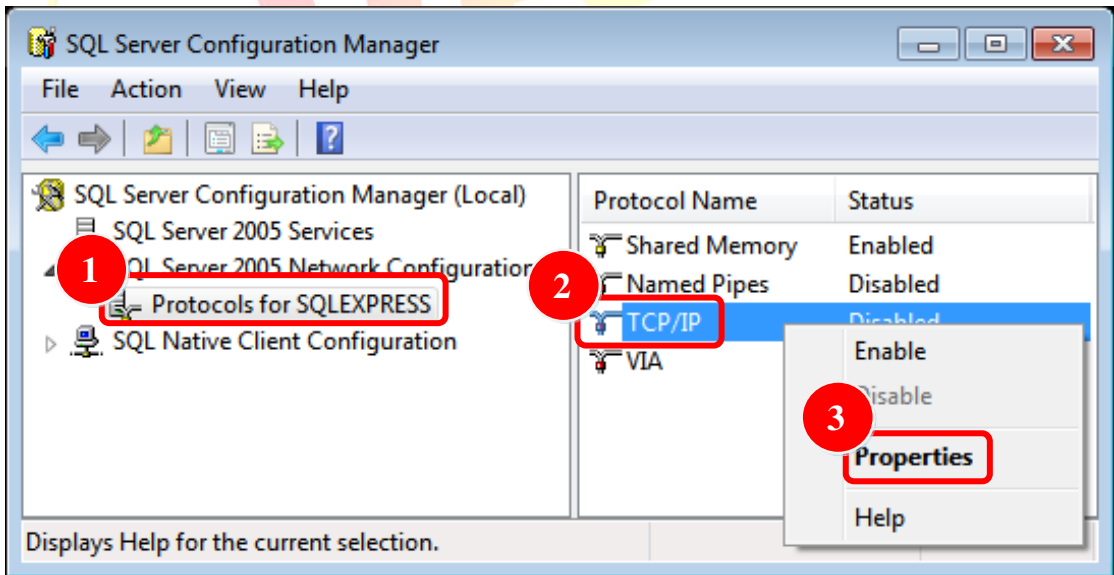
STEP 3: Execute "SQL Server Configuration Manager"

STEP 3.1: Enter "Content" to set

Part 1: Select "Potocols for SQLEXPRESS"

Part 2: Select "TCP/IP"

Part 3: Click "Content" to set



Classification	System and Application FAQ on WinCE PAC				No.	5-004-00	
Author	Cid	Version	1.0.0	Date	2018/04/23	Page	12/23

STEP 3.2: Select “Yes” for “Enabled” at tab “Protocol”

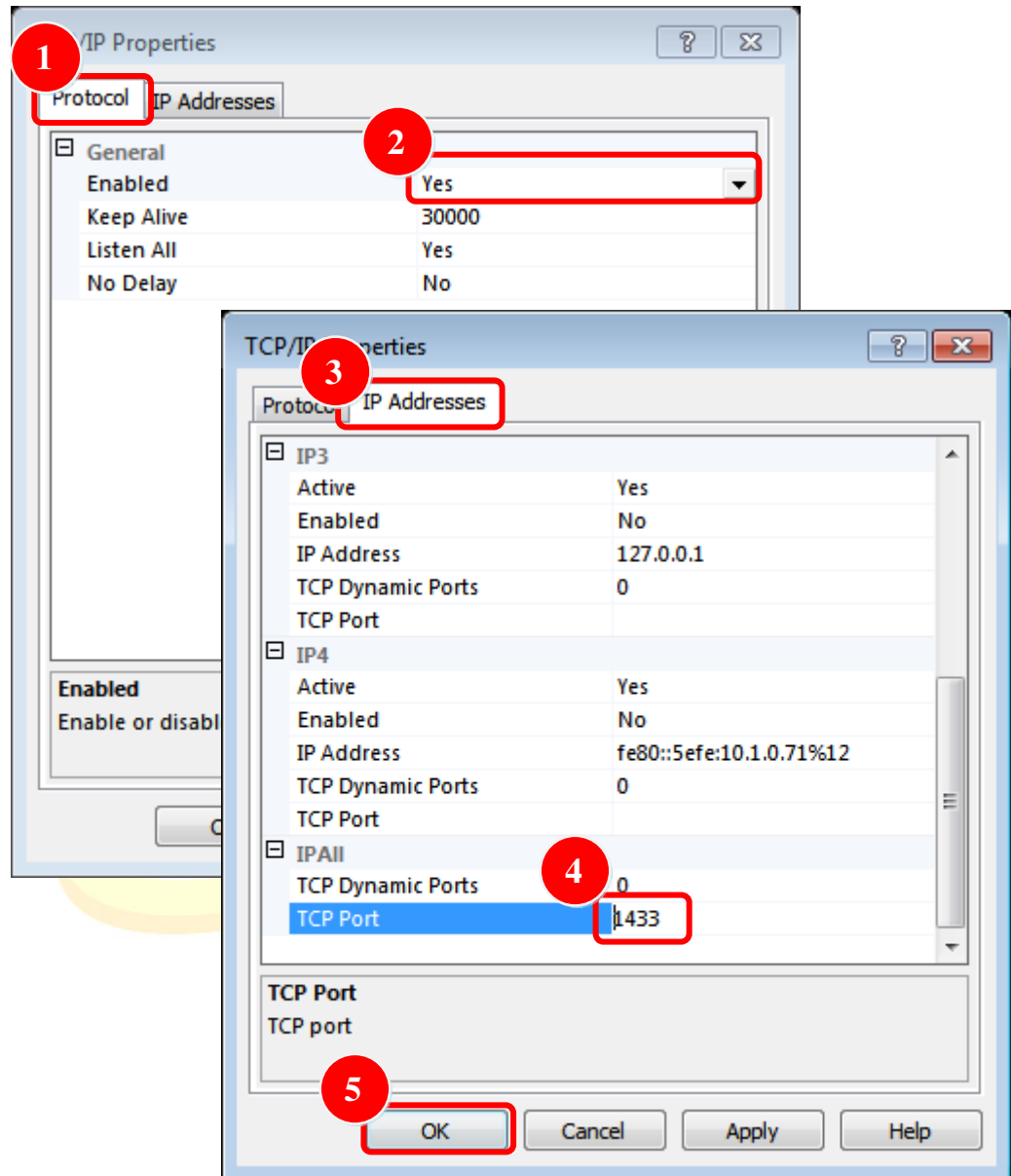
Part 1: Select tab “Protocol”

Part 2: Choose the “Enable” to “Yes”

Part 3: Select tab “IP Addresses”

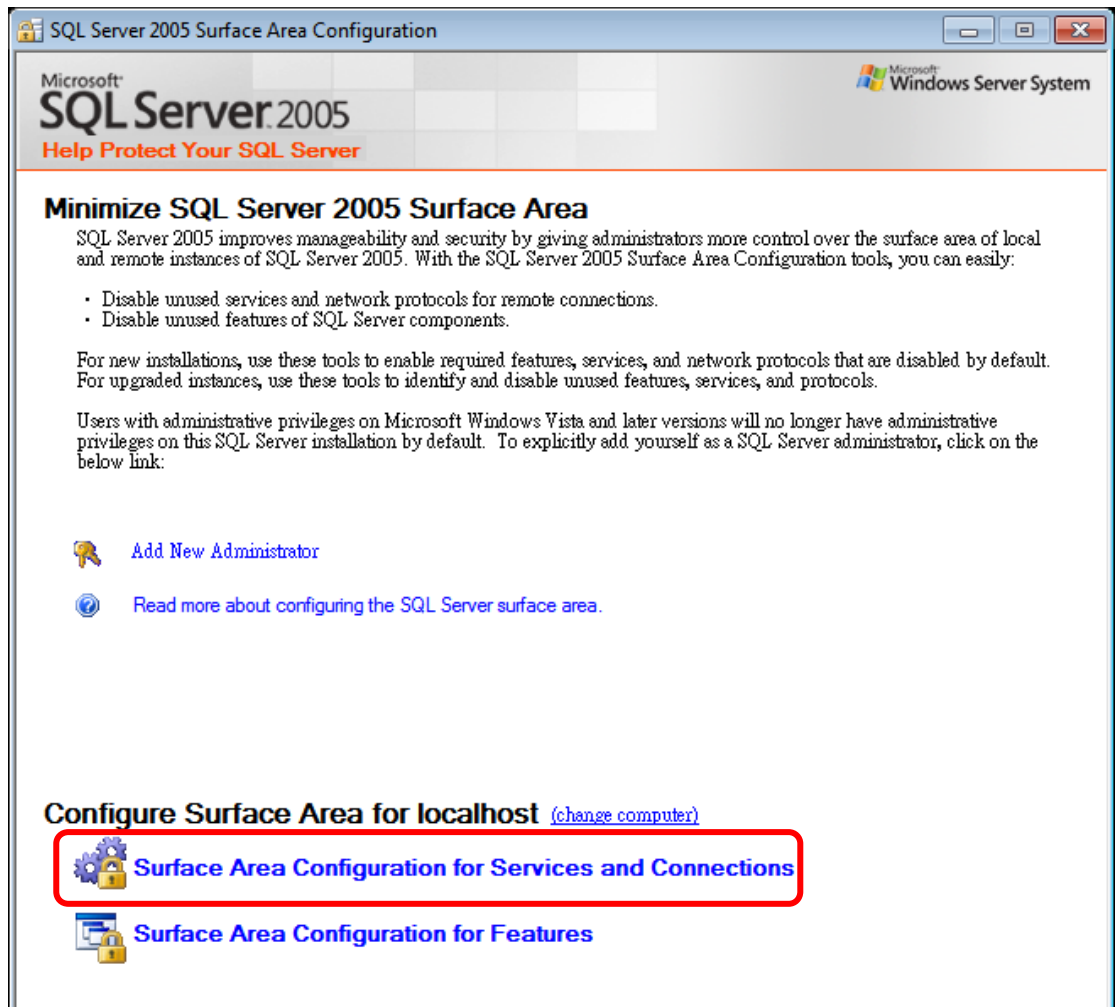
Part 4: Modify the “TCP Port” to 1433

Part 5: Click button “OK”



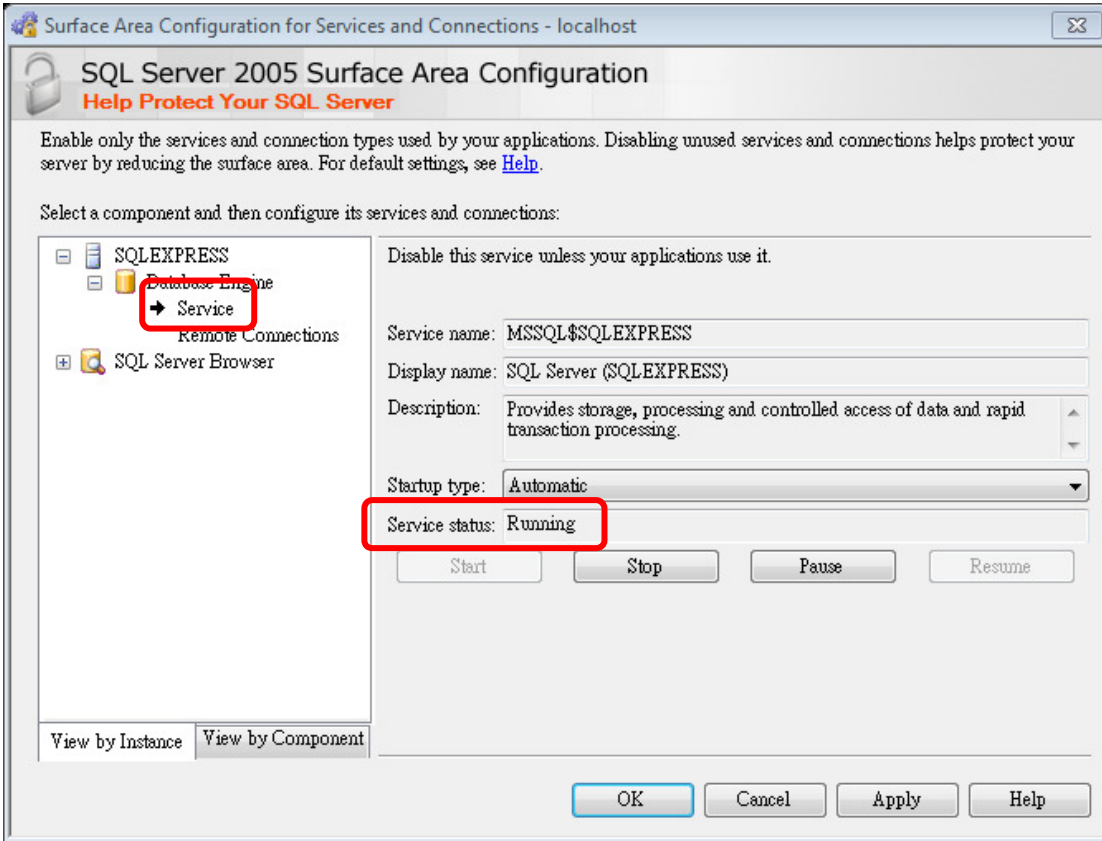
Classification	System and Application FAQ on WinCE PAC				No.	5-004-00	
Author	Cid	Version	1.0.0	Date	2018/04/23	Page	13/23

STEP 4: Execute “SQL Server Surface Area Configuration” and Choose “Surface Area Configuration for Service and Connections”

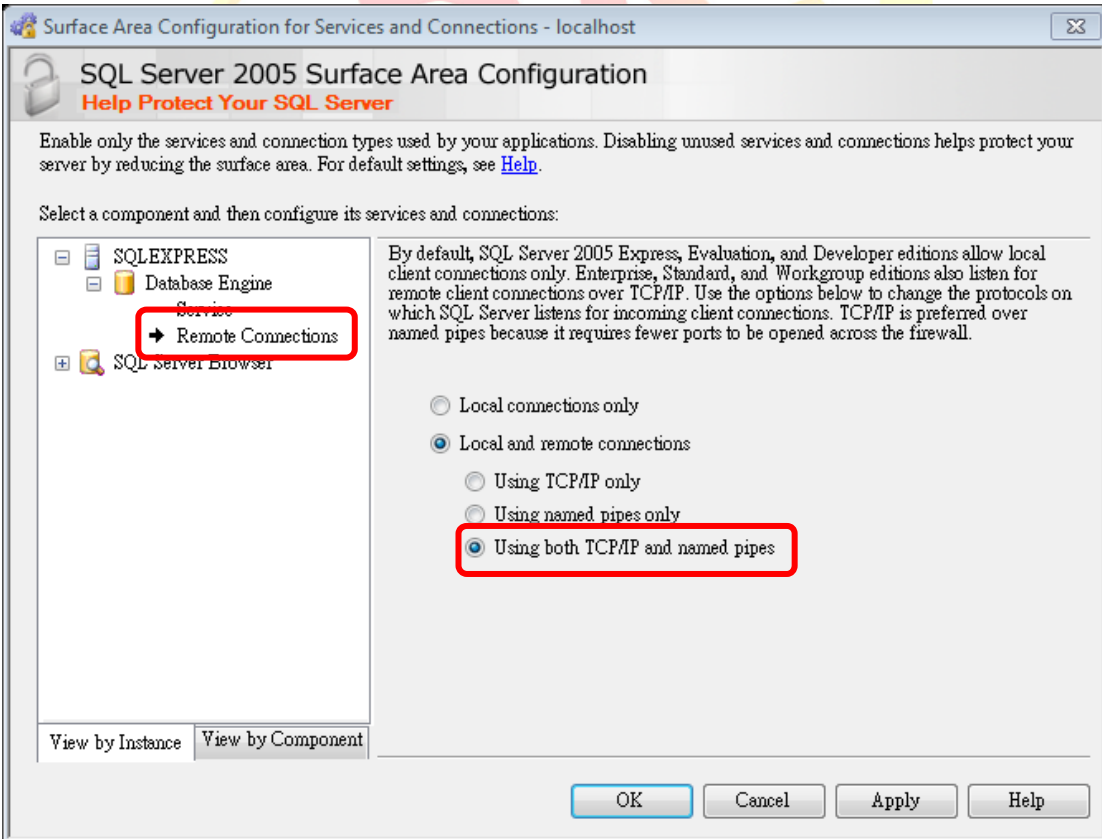


Classification	System and Application FAQ on WinCE PAC				No.	5-004-00	
Author	Cid	Version	1.0.0	Date	2018/04/23	Page	14/23

STEP 4.1: Check the “Service status” is “Running”

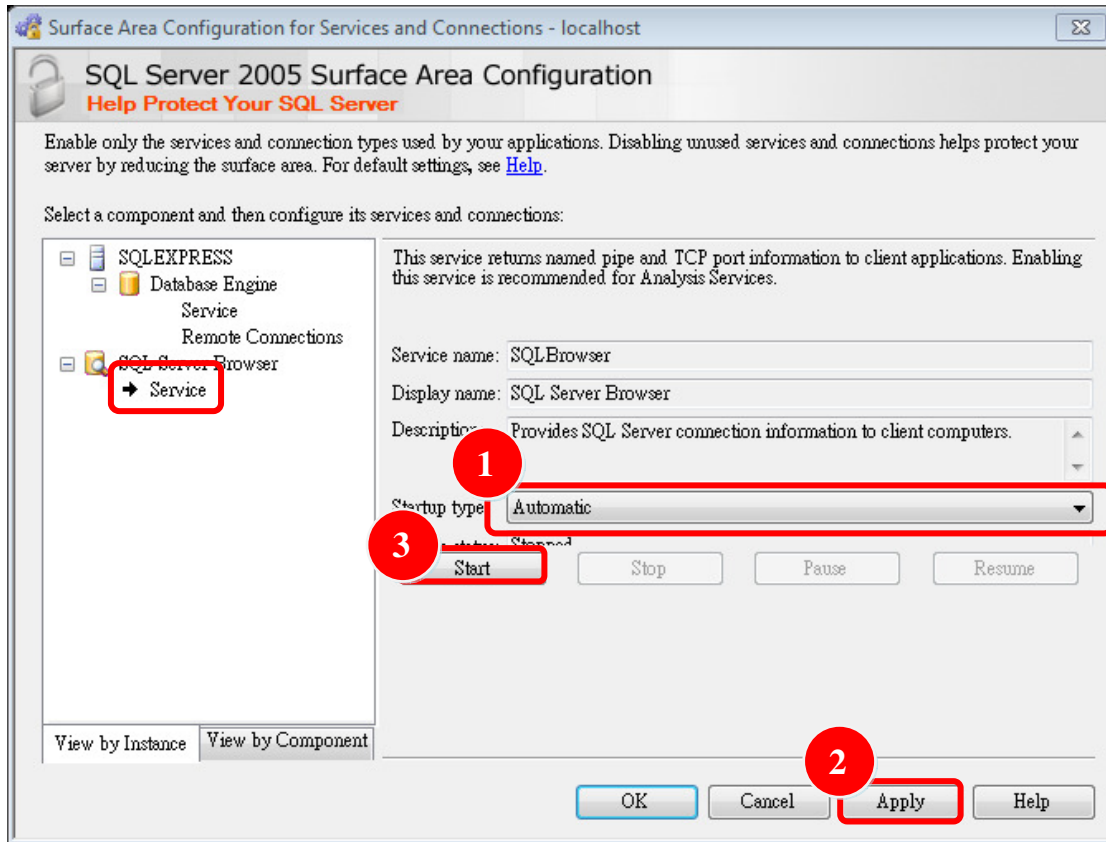


STEP 4.2: Choose the “Using both TCP/IP and named pipes”



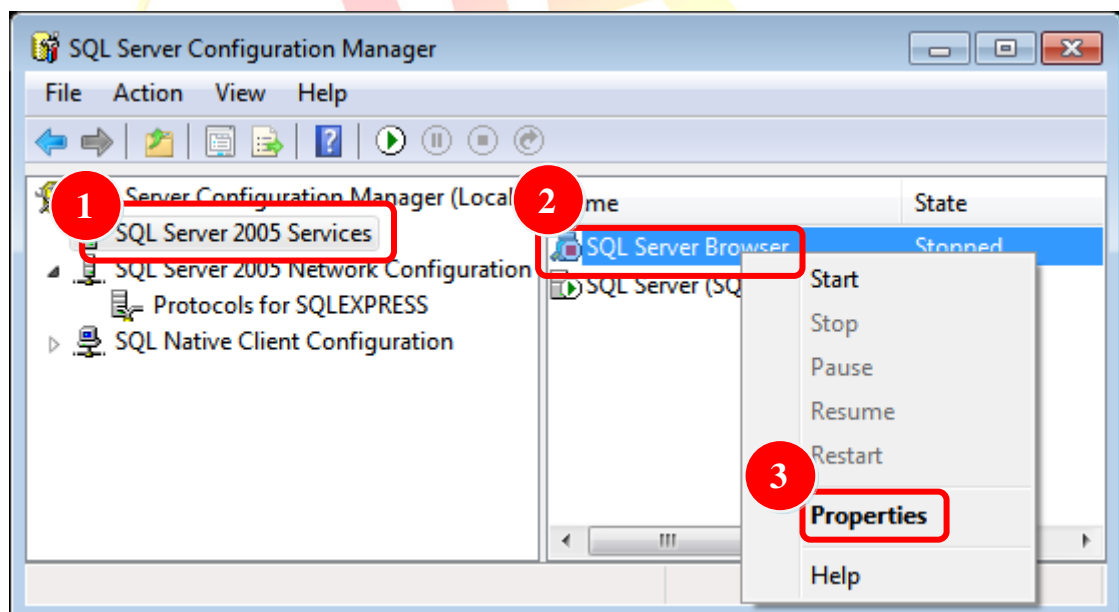
Classification	System and Application FAQ on WinCE PAC				No.	5-004-00	
Author	Cid	Version	1.0.0	Date	2018/04/23	Page	15/23

STEP 4.3: Set “Automatic” → Press “Apply” → Press “Start”



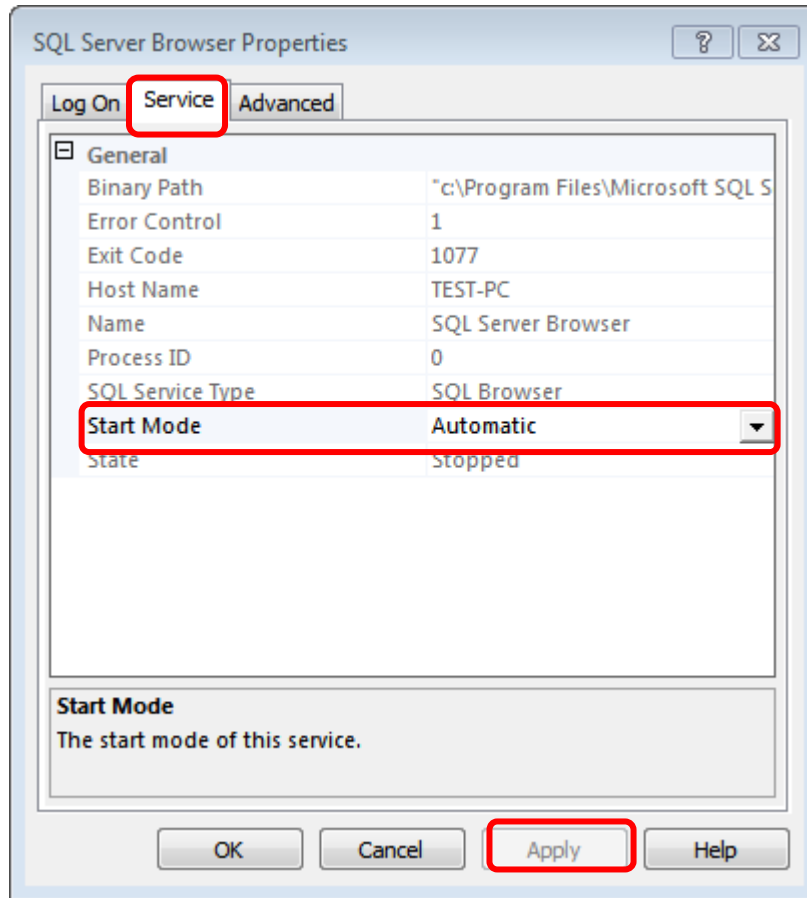
STEP 5: Execute “SQL Server Configuration Manager”

STEP 5.1: SQL Server 2005 Services → SQL Server Browser → “Content”

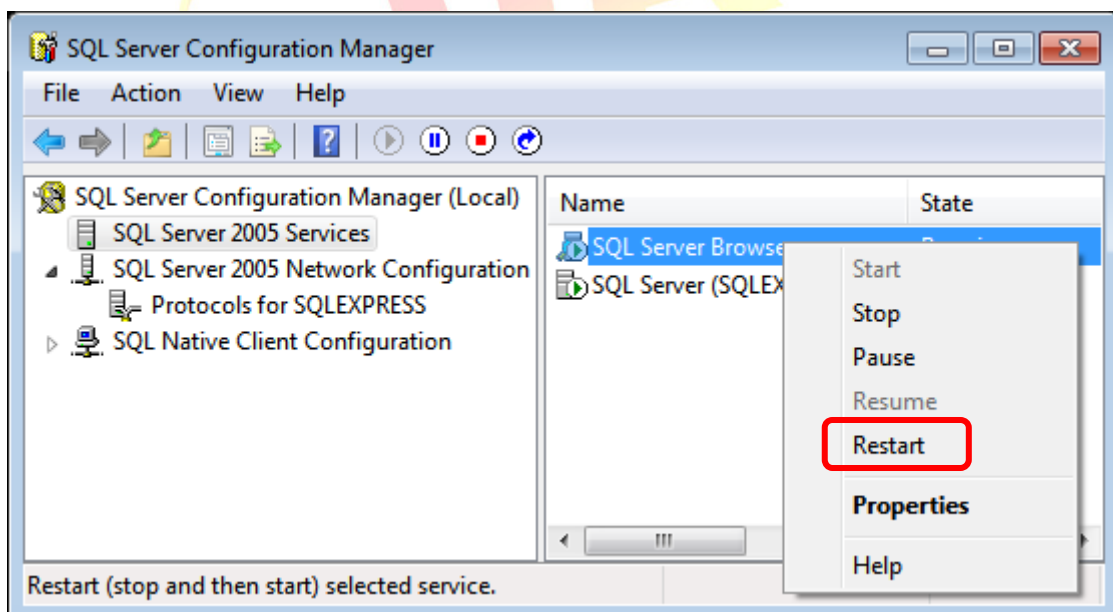


Classification	System and Application FAQ on WinCE PAC				No.	5-004-00	
Author	Cid	Version	1.0.0	Date	2018/04/23	Page	16/23

STEP 5.2: Service → Set “Start Mode” to Automatic → Press “Apply” button



STEP 5.2: Restart to refresh the configurations for SQL Server Brower/SQL Server(SQLSERVER).

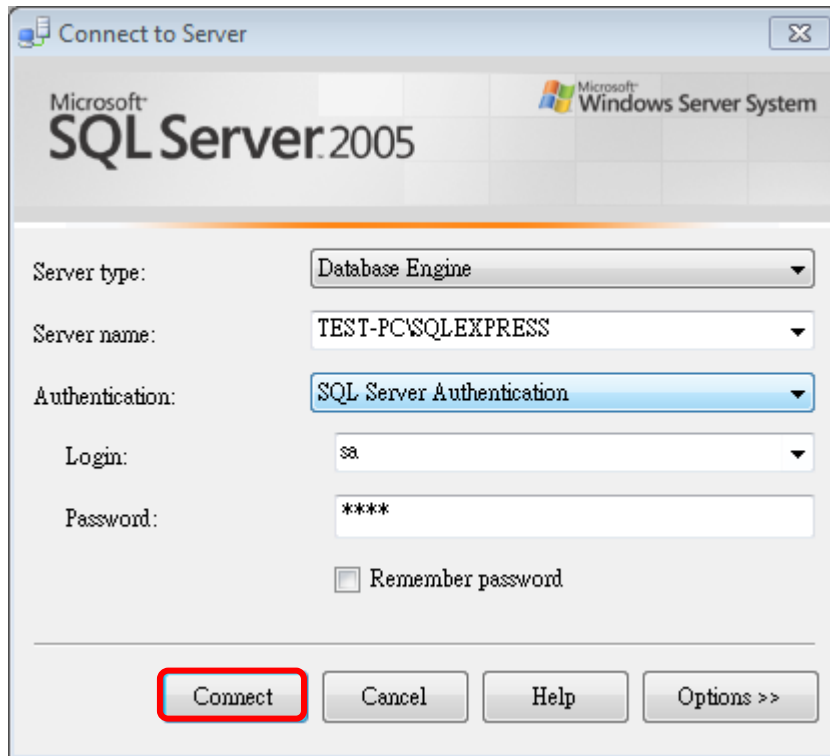


Classification	System and Application FAQ on WinCE PAC				No.	5-004-00	
Author	Cid	Version	1.0.0	Date	2018/04/23	Page	17/23

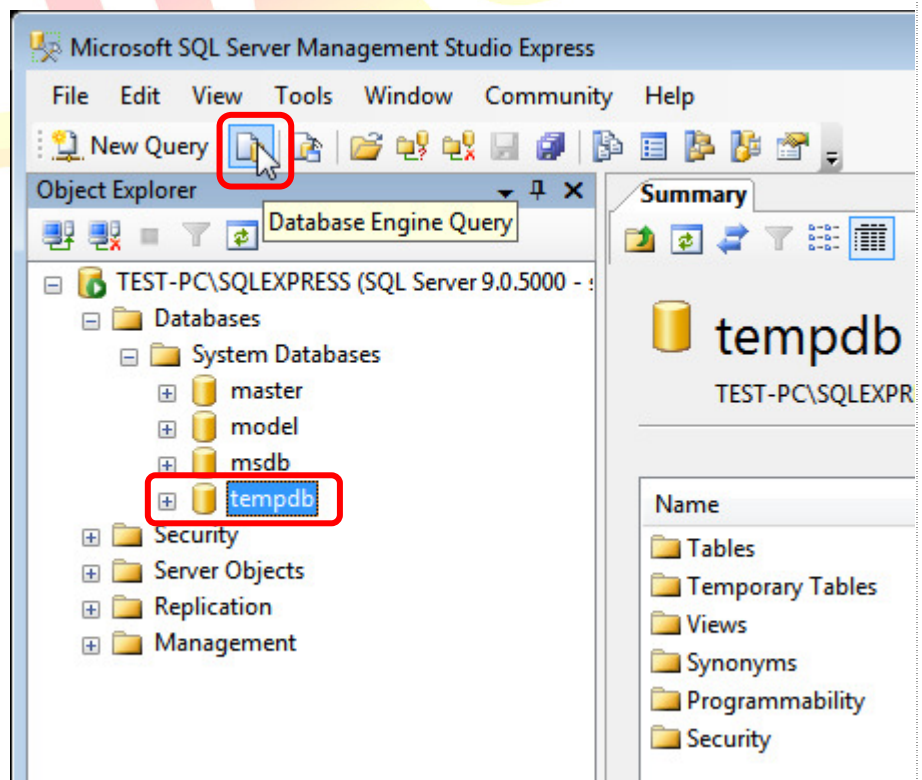
[Create Database]

STEP 6: Execute “SQL Server Management Studio Express”

STEP 6.1: The Login “sa” is administrator, and enter the password that is set in Step1.2

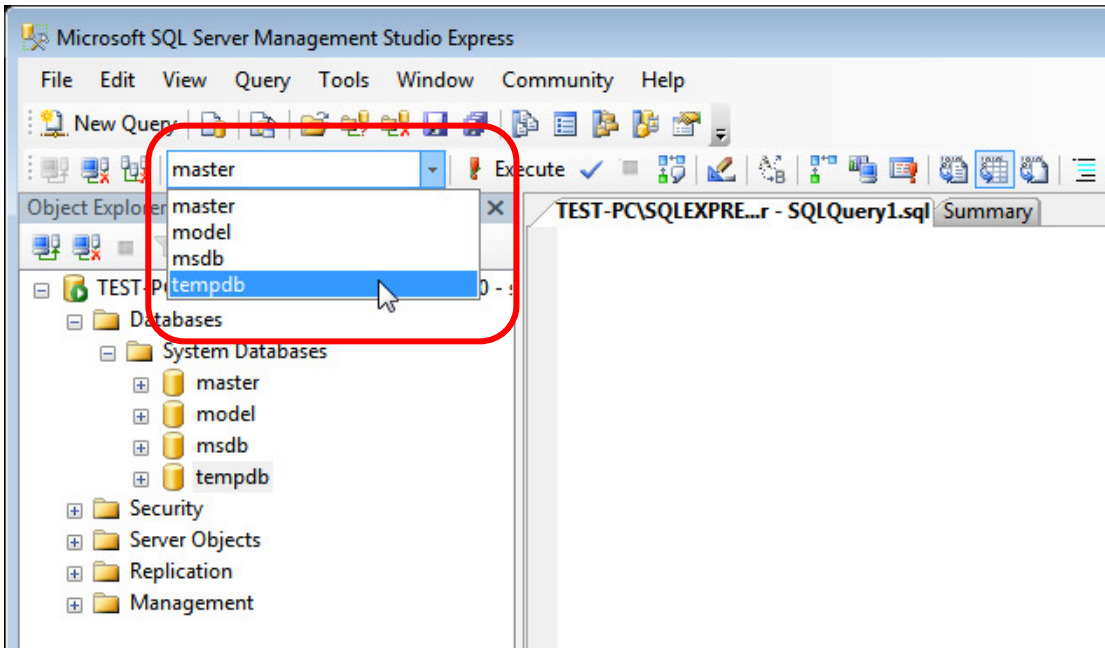


STEP 6.2: Click “Database Engine Query” on “SQL Server Management Studio Express”
And then you have to login again.



Classification	System and Application FAQ on WinCE PAC				No.	5-004-00	
Author	Cid	Version	1.0.0	Date	2018/04/23	Page	18/23

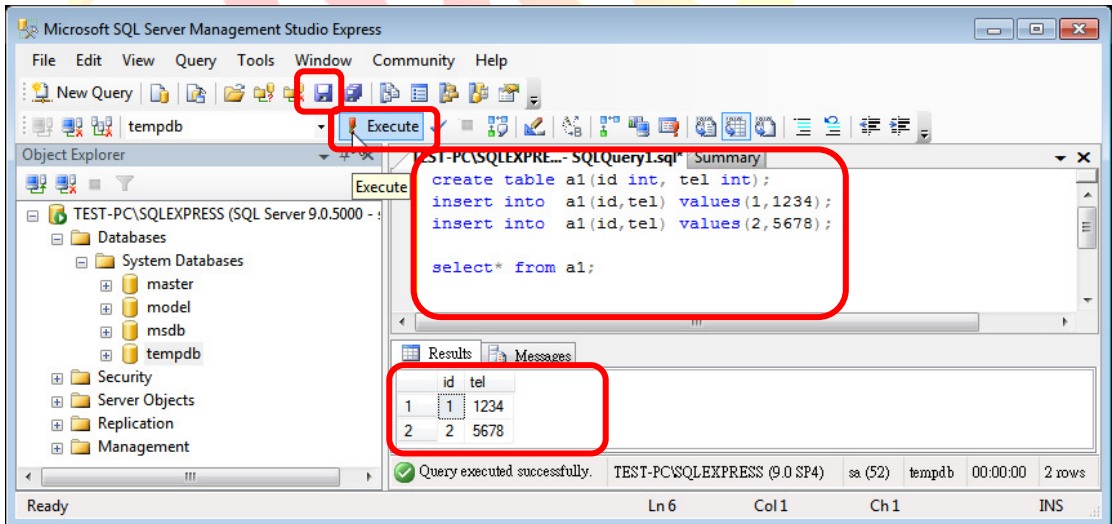
STEP 6.3: Select a database to build table. The example select “tempdb” database.



STEP 6.3: Write the following codes and press “Execute” button. Then, save it.

```
create table a1(id int, tel int);
insert into a1(id,tel) values(1,1234);
insert into a1(id,tel) values(2,5678);

select* from a1;
```



Classification	System and Application FAQ on WinCE PAC				No.	5-004-00	
Author	Cid	Version	1.0.0	Date	2018/04/23	Page	19/23

[Close firewall on your PC]

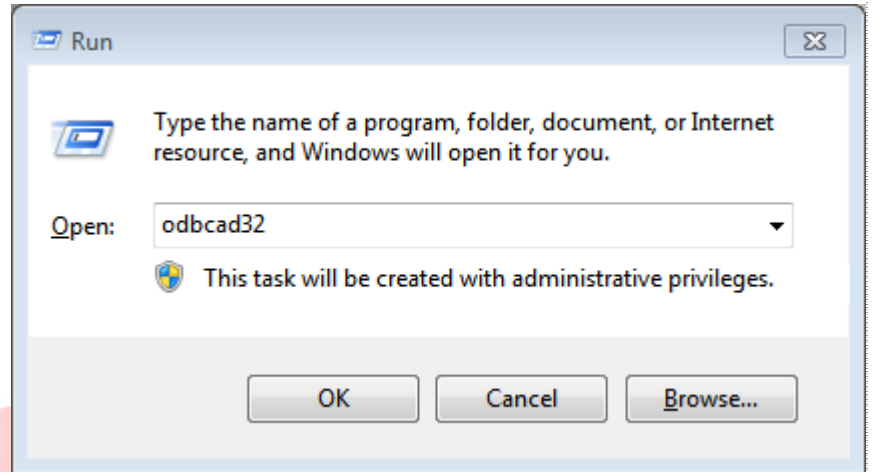
You have to close SQL server's firewall at control panel.

If you don't close the firewall, the other device will connect fail when them client this SQL server.

[Enable SQL Server by ODBC]

STEP 7.1:

Start → Run → enter "odbcad32"



STEP 7.2: Add System DSN

Part 1: Select tab

"System DSN"

Part 2: Click button

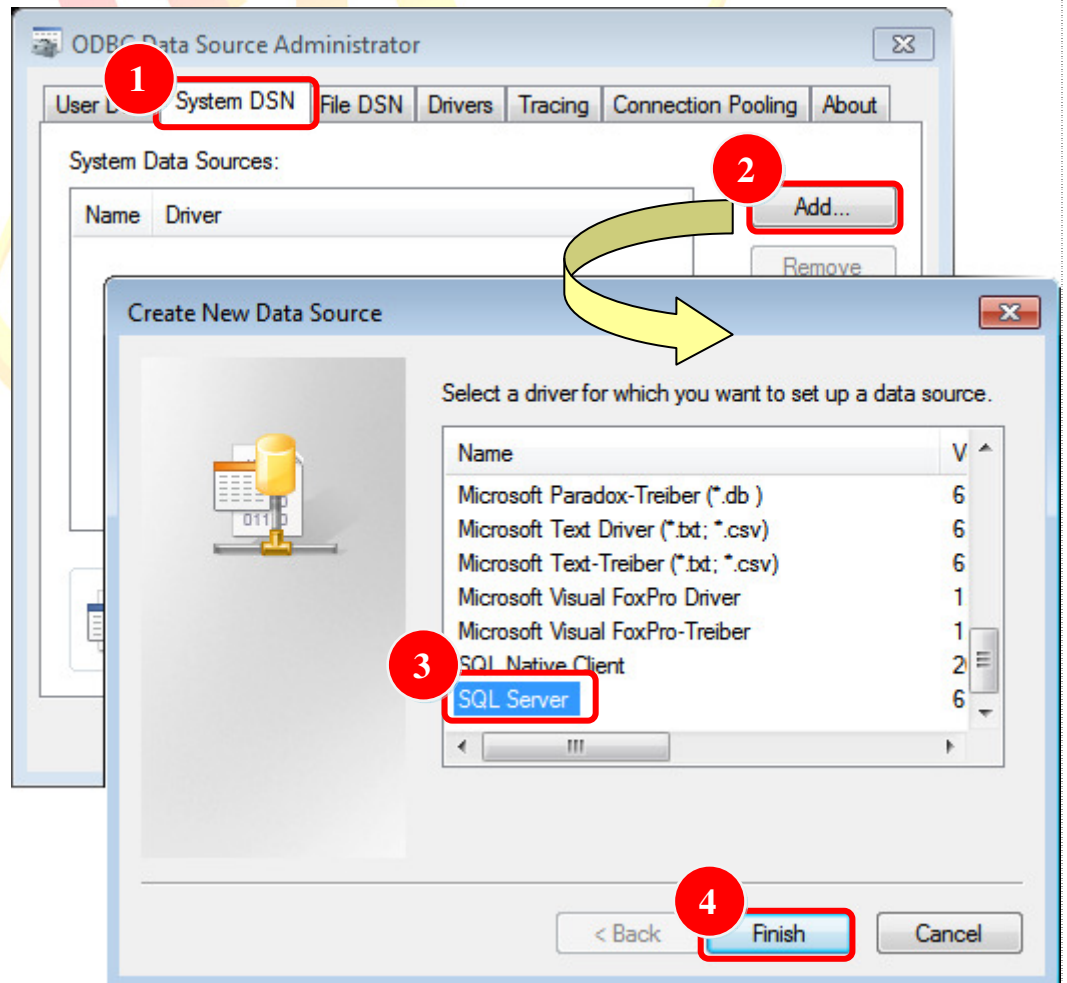
"Add..."

Part 3: Select list "SQL

Server"

Part 4: Click button

"Finish"



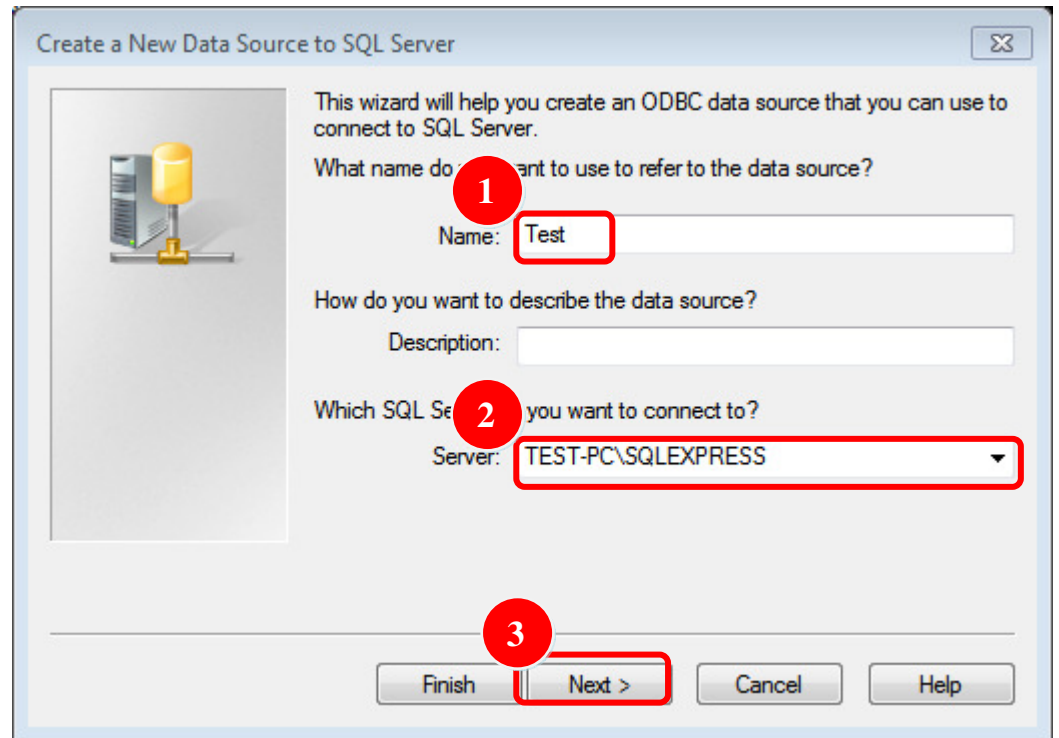
Classification	System and Application FAQ on WinCE PAC				No.	5-004-00	
Author	Cid	Version	1.0.0	Date	2018/04/23	Page	20/23

There are two places need to be adjusted.

STEP 7.3: Create a New Data Source to SQL Server

Part 1: Modify the name by yourself

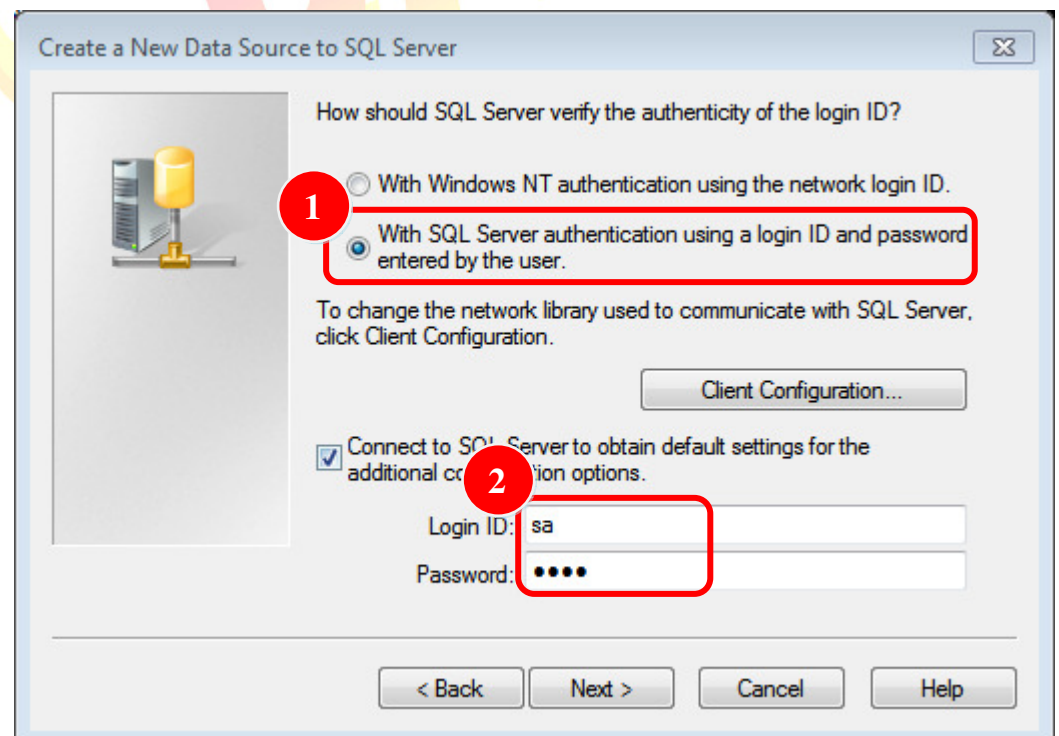
Part 2: Click ComboBox to select the data on this PC



STEP 7.3: Select login mode

Part 1: Choose second radiobox

Part 2: The login code must be "sa". Input a password that is set in Step1.



Classification	System and Application FAQ on WinCE PAC				No.	5-004-00	
Author	Cid	Version	1.0.0	Date	2018/04/23	Page	21/23

[Modify the SqlSrRemote demo to connect remote SQL server]

[C#]

Modify IP, database name, ID, password

```
string strConn = " server=10.1.0.56/sqlexpress;database=tempdb;user id=sa;password=1234;"
```

Connect target SQL

```
SqlConnection connRemote = new SqlConnection(strConn);
connRemote.Open();
```

Select* from a1

```
strSql = "select* from a1";
sqlCmd.Connection = connRemote;
sqlCmd.CommandText = strSql;
sqlReader = sqlCmd.ExecuteReader();
```

Create table and display the from

```
dTable = new DataTable("a1");
dTable.Columns.Add("id", typeof(int));
dTable.Columns.Add("tel", typeof(int));
```

```
while (sqlReader.Read())
{
    dRow = dTable.NewRow();
    dRow["id"] = sqlReader["id"];
    dRow["tel"] = sqlReader["tel"];
    dTable.Rows.Add(dRow);

    dbCount += 1;
}
```

```
dataGrid1.DataSource = dTable;
label5.Text = "Number: " + dbCount;
sqlCmd.Dispose();
sqlReader.Close();
```

Standard command program

```
string strSql = null;
SqlCommand sqlCmd = new SqlCommand();
SqlDataReader sqlReader = default(SqlDataReader);
strSql = "You want execute SQL command";
sqlCmd.Connection = connRemote;
sqlCmd.CommandText = strSql;
sqlReader = sqlCmd.ExecuteReader();
sqlCmd.Dispose();
sqlReader.Close();
```

Classification	System and Application FAQ on WinCE PAC				No.	5-004-00	
Author	Cid	Version	1.0.0	Date	2018/04/23	Page	22/23

[VB.net]

Modify IP, database name, ID, password

```
Dim strConn As String = " server=10.1.0.56\sqlexpress;database=tempdb;user
id=sa;password=1234;"
```

Connect target SQL

```
Dim connRemote As New SqlConnection (strConn)
connRemote.Open()
```

Select* from a1

```
strSql = "select* from a1"
sqlCmd.Connection = connRemote
sqlCmd.CommandText = strSql
sqlReader = sqlCmd.ExecuteReader()
```

Create table and display the from

```
dTable = New DataTable ("a1")
dTable.Columns.Add("id", GetType(Integer))
dTable.Columns.Add("tel", GetType(Integer))
```

```
While sqlReader.Read()dRow = dTable.NewRow();
    dbCount += 1;
    dRow = dTable.NewRow()
    dRow("id") = sqlReader("id")
    dRow("tel") = sqlReader("tel")
    dTable.Rows.Add(dRow)
    dbCount += 1
```

End While

```
dataGrid1.DataSource = dTable
label5.Text = "Number: " + dbCount
sqlCmd.Dispose()
sqlReader.Close()
```

Standard command program

```
Dim strSql As String = Nothing
Dim sqlCmd As New SqlCommand()
Dim sqlReader As SqlDataReader = Nothing
strSql = "You want execute SQL command"
sqlCmd.Connection = connRemote
sqlCmd.CommandText = strSql
sqlReader = sqlCmd.ExecuteReader()
sqlCmd.Dispose()
sqlReader.Close()
```

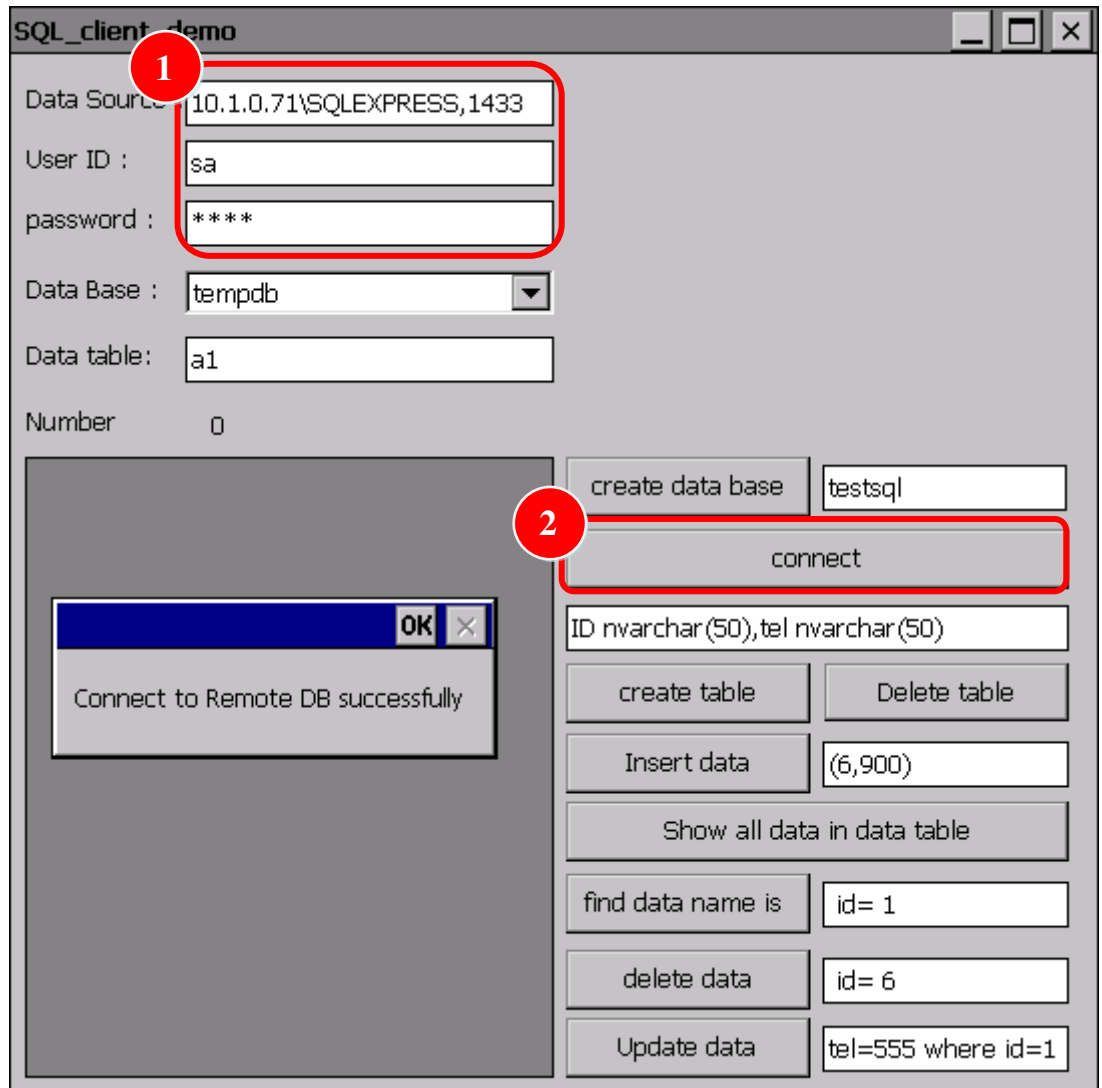
Classification	System and Application FAQ on WinCE PAC				No.	5-003-00	
Author	Tunglu-Yu	Version	1.0.0	Date	2010/4/22	Page	23/23

[Demo Program]

STEP 1: Enter the target server, user id, password

Part 1: Enter the target server(If PC has firewall, enter the port number ,1433), database user id, password

Part 2: Click button “connect”, it will show the message box if it connect success



STEP 2: Select ComboBox “Data Base” for CREATE, SELECT, INSERT, DELETE, etc.

Button information for this example, and the red string user can be change.

Create data base: "CREATE DATABASE **testsql**"

Create table: "CREATE TABLE **a1**(ID nvarchar(50),tel nvarchar(50))"

Delete table: "DROP TABLE **a1**"

Insert data: "Insert Into **a1** Values (**6,900**)"

Show all data in data table: "Select * from **a1**"

Find data name is: " Select * from **a1** where **id= 1**"

Delete data: "delete from **a1** where **id= 6**"

Update data: "Update **a1** set **tel=555** where **id=1**"