

Classification	System and Application FAQ on WinCE PAC				No.	4-004-00	
Author	Vic-Tsai	Version	1.0.0	Date	2018/04/27	Page	1/2

## How to clear the device name listed on Eshell

*Applies to:*

<i>Platform</i>	<i>OS Version</i>	<i>PAC Utility Version</i>
<i>WinPAC</i>	<i>All Versions</i>	<i>All Versions</i>
<i>ViewPAC</i>	<i>All Versions</i>	<i>All Versions</i>

Every time when Eshell searches a device, the device name will be added to a list without clearing. Therefore the list will be longer and longer (See “Diagram-1”) and become difficult to recognize which one is the right choice.

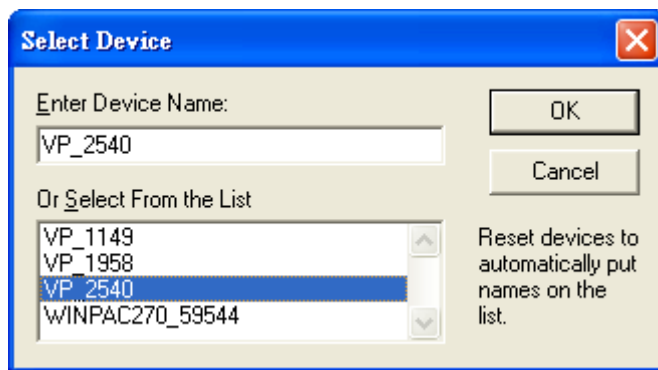


Diagram-1

The following is the solution:

**Step 1:** Copy “Eshell” folder to PC.

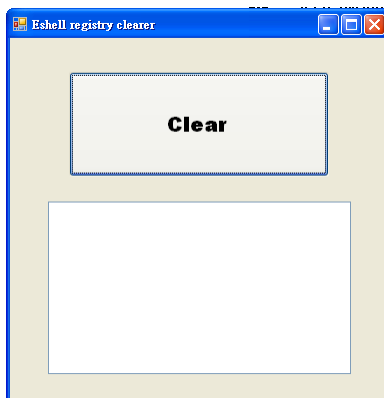
(There will be two files in it. One is ESHELL.EXE and another is registry\_clear.exe)

Download path:

CD:\napdos\wp-8x4x\_ce50\PC\_Tools\Eshell

[http://ftp.icpdas.com/pub/cd/winpac/napdos/wp-8x4x\\_ce50/pc\\_tools/Eshell](http://ftp.icpdas.com/pub/cd/winpac/napdos/wp-8x4x_ce50/pc_tools/Eshell)

**Step 2:** Execute registry\_clear.exe and click “Clear” button



Classification	System and Application FAQ on WinCE PAC				No.	4-004-00	
Author	Vic-Tsai	Version	1.0.0	Date	2018/04/27	Page	2/2

**Step 3:** After clearing device name, the Eshell windows shows to search device.

