

Classification	System and Application FAQ on WinCE PAC				No.	4-001-02	
Author	Tunglu-Yu	Version	1.0.1	Date	2018/04/27	Page	1/7

How to update OS image by Eshell

Applies to:

<i>Platform</i>	<i>OS Version</i>	<i>PAC Utility Version</i>
<i>WinPAC</i>	<i>All Versions</i>	<i>All Versions</i>
<i>ViewPAC</i>	<i>All Versions</i>	<i>All Versions</i>

Note: If you do not have the DHCP server in your LAN, please exchange to use the Micro_SD to update OS image.

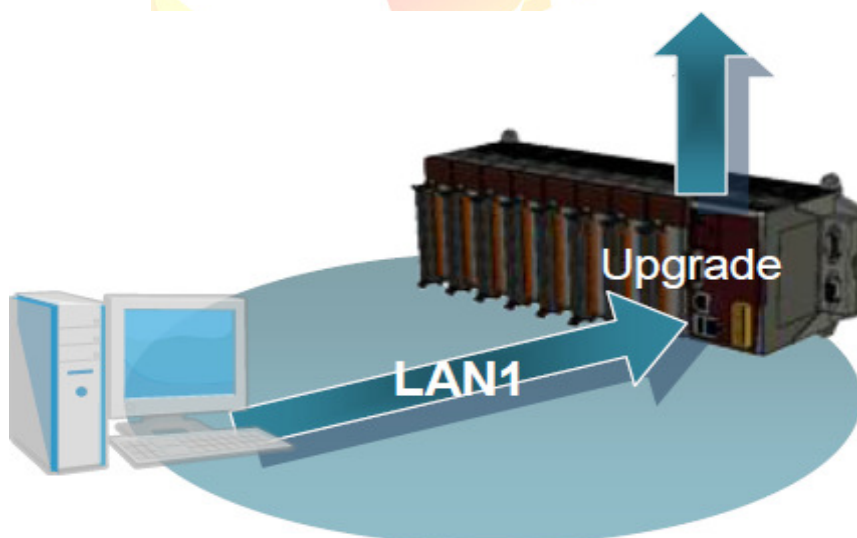
Before updates OS, Please do below acts.

1. Preparation of below devices.

- Monitor/VGA line
- USB Hub
- USB Mouse
- USB Keyboard
- Micro_SD

Tips & Warnings

By default, the OS updates via LAN1. Therefore, to update the OS image, make sure LAN1 is connected to the LAN Network.



Classification	System and Application FAQ on WinCE PAC				No.	4-001-02	
Author	Tunglu-Yu	Version	1.0.1	Date	2018/04/27	Page	2/7

2. The registry of OS will return to the default value after update the OS image, please remember all settings in the WinPAC. (e.g. PWM 、 Desktop 、 Time Zone 、 screen resolution 、 SNTP 、 Ethernet settings 、 Auto execute 、 UI language.....)

3. Backup the System_disk files in the Micro_SD folder.

Warnings



The System_disk will be formatted after update the OS image, please remember backup the System_disk files in the Micro_SD folder.



Classification	System and Application FAQ on WinCE PAC					No.	4-001-02
Author	Tunglu-Yu	Version	1.0.1	Date	2018/04/27	Page	3/7

Update WinPAC OS

To update OS image by Eshell, please perform the following steps:

Step 1: Download the [eshell.exe](#) and OS install file to the PC side.

Eshell.exe:

CD: \WinPAC_AM335x\Wp-5231\pc_tools\eshell\

OS Image.

[http://ftp.icpdas.com/pub/cd/WinPAC_AM335x/Wp-5231/OS_Image/update from eshell or micro sd/](http://ftp.icpdas.com/pub/cd/WinPAC_AM335x/Wp-5231/OS_Image/update_from_eshell_or_micro_sd/) (***Note1**)

Note1: The OS image files of other platform:

VP-x201 : [http://ftp.icpdas.com/pub/cd/winpac_am335x/vp-x201/os_image/update from eshell or micro sd/](http://ftp.icpdas.com/pub/cd/winpac_am335x/vp-x201/os_image/update_from_eshell_or_micro_sd/)

VP-x231 : [http://ftp.icpdas.com/pub/cd/winpac_am335x/vp-x231/os_image/update from eshell or micro sd/](http://ftp.icpdas.com/pub/cd/winpac_am335x/vp-x231/os_image/update_from_eshell_or_micro_sd/)

WP-2241 : [http://ftp.icpdas.com/pub/cd/WinPAC_AM335x/WP-2241/OS_Image/update from eshell or micro sd/](http://ftp.icpdas.com/pub/cd/WinPAC_AM335x/WP-2241/OS_Image/update_from_eshell_or_micro_sd/)

WP-8x2x : [http://ftp.icpdas.com/pub/cd/WinPAC_AM335x/wp-8x2x/OS_Image/WP-8x2x-CE7/update from Eshell or Micro SD/](http://ftp.icpdas.com/pub/cd/WinPAC_AM335x/wp-8x2x/OS_Image/WP-8x2x-CE7/update_from_Eshell_or_Micro_SD/)

WP-9000 : [http://ftp.icpdas.com/pub/cd/WinPAC_AM335x/WP-9000/OS_Image/WP-9x21-CE7/update from Eshell or Micro SD/](http://ftp.icpdas.com/pub/cd/WinPAC_AM335x/WP-9000/OS_Image/WP-9x21-CE7/update_from_Eshell_or_Micro_SD/)

There are six files in the OS installation file (*.Zip):

MLO

XLDRSD.nb0

XLDRNAND.nb0


EBOOTND.nb0

EBOOTSD.nb0

NK.bin

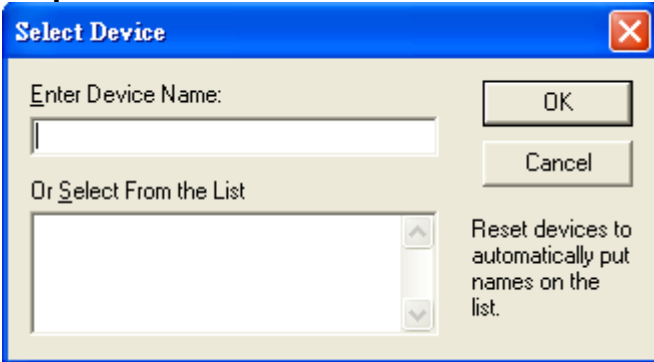
Unzip the Zip file to the appropriate location. e.g. C:\AM335x_O....

Step 2: Turn the rotary switch to the “3” position and reboot.

	Rotary switch position	Modes of operation
	0	Normal
	1	Safe
	2	Debug
	3	OS update (By Eshell)
	4	Reserved
	5	OS update (By Micro_SD)
	6	Reserved
	7~9	Normal (User define)

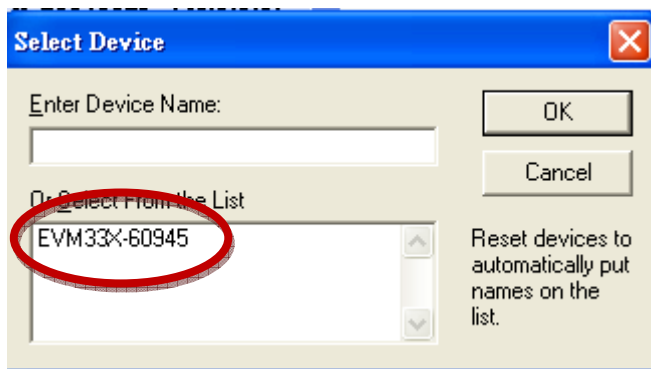
Classification	System and Application FAQ on WinCE PAC				No.	4-001-02	
Author	Tunglu-Yu	Version	1.0.1	Date	2018/04/27	Page	4/7

Step 3: Execution “Eshell” on the PC side.



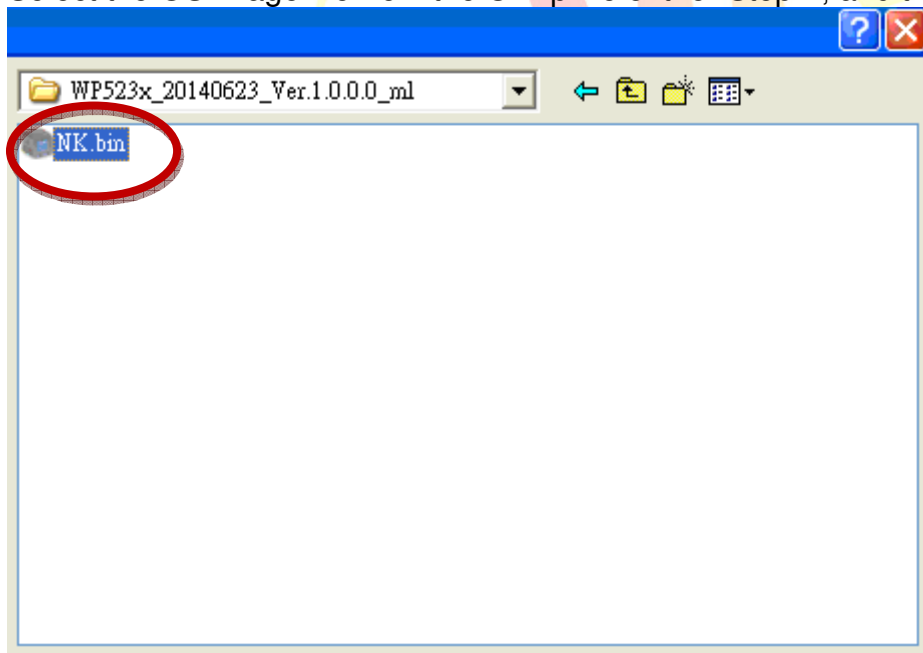
The “Select From the List” Listbox will display the device name after three seconds. (e.g. EVM33X-60945)

Step 4: Select the device that you want to update the OS image.



Step 5: Select the OS image file. (*.bin).

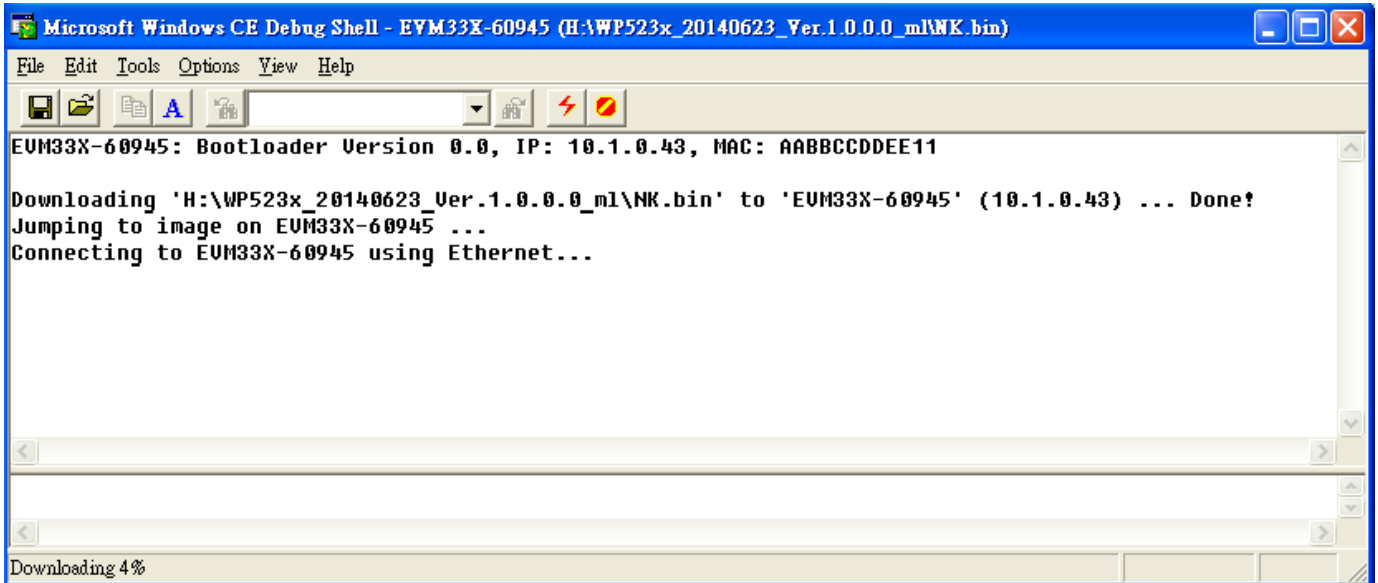
Select the OS image file from the Unzip file of the “Step1”, and the click the “Open” button.



The Eshell update the “NK.bin” file after clicking the “start” button.

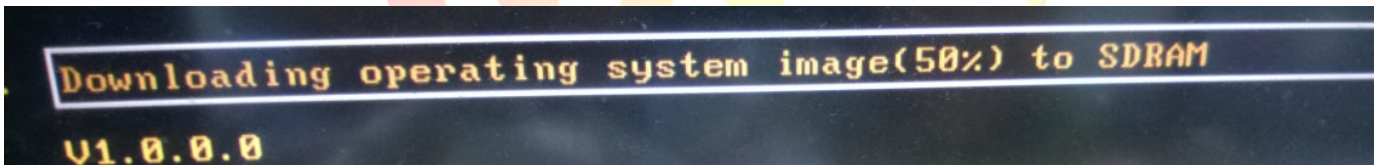
Classification	System and Application FAQ on WinCE PAC				No.	4-001-02	
Author	Tunglu-Yu	Version	1.0.1	Date	2018/04/27	Page	5/7

PC side

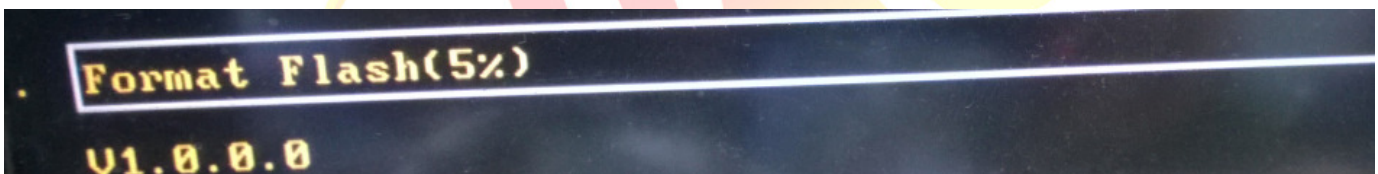


WinPAC side will show the installation progress.

1. The WinPAC will download the NK.bin file from Ethernet to the SDRAM..



2. Erase and Format the OS Flash.



3. Write the OS image (NK.bin) from SDRAM to OS flash.



4. Update complete.

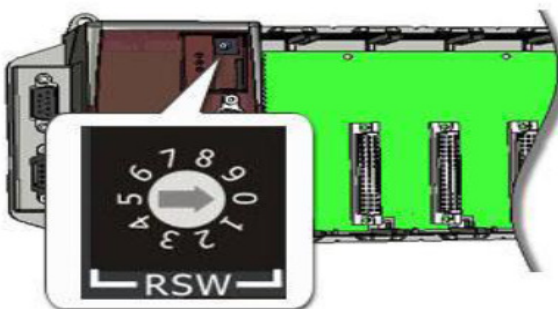


Classification	System and Application FAQ on WinCE PAC				No.	4-001-02	
Author	Tunglu-Yu	Version	1.0.1	Date	2018/04/27	Page	6/7

The desktop will be displayed after OS update complete.

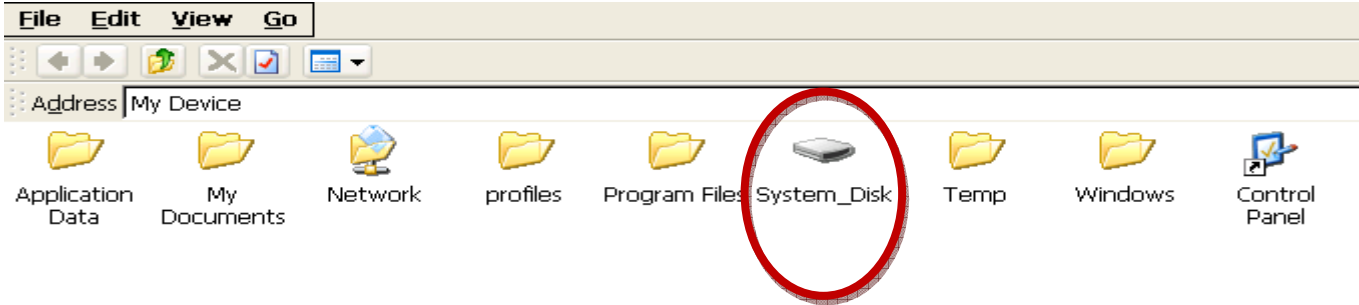


Step 6: Turn the rotary switch to the "0".



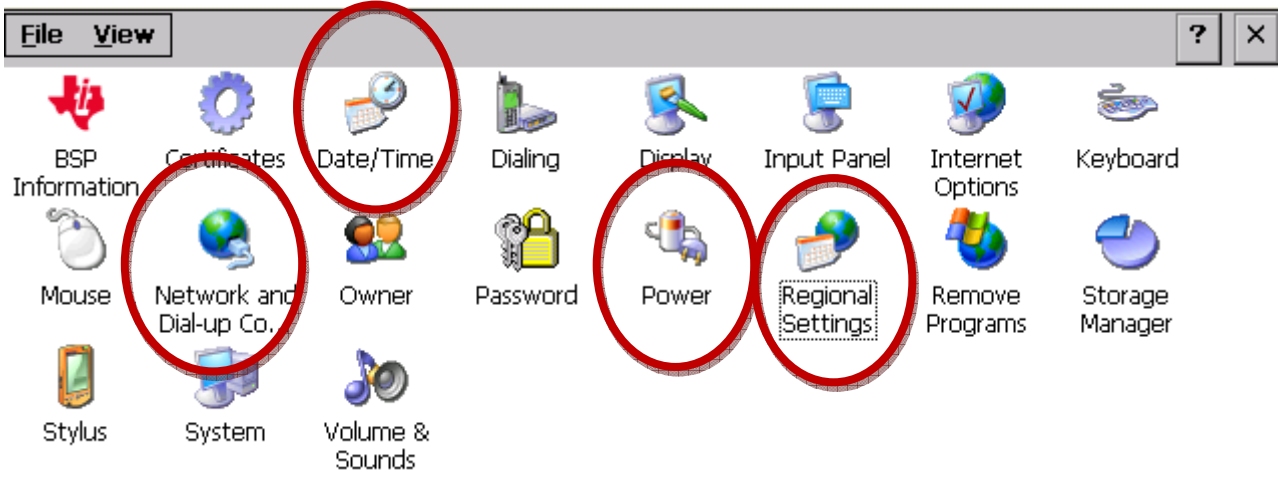
Classification	System and Application FAQ on WinCE PAC				No.	4-001-02	
Author	Tunglu-Yu	Version	1.0.1	Date	2018/04/27	Page	7/7

Step 7: Restore the System_disk files form the Micro_SD folder.



Step 8: Restore your WinPAC settings.

(e.g. PWM 、 Desktop 、 Time Zone 、 screen resolution 、 SNTP 、 Ethernet settings 、 Auto execute 、 UI language.....)



Step 9: Check the WinPAC OS version.

Start the PAC Utility on the desktop, and then select the “Device Information” tab to check the current OS version.

