

Classification	System and Application FAQ on WinCE PAC				No.	2-017-00	
Author	Eric_Shiu	Version	1.0.0	Date	2018/04/27	Page	1/5

How to Use FTP/Telnet authentication

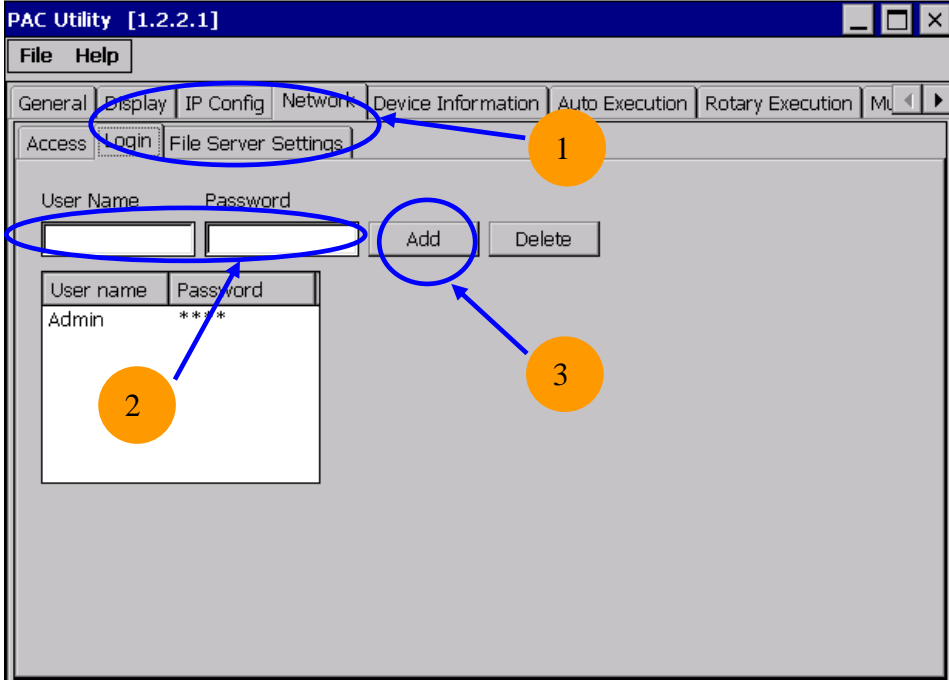
Applies to:

Platform	OS version	PAC utility version
WinPAC series	All versions (WinCE7)	All versions
ViewPAC series	All versions (WinCE7)	All versions

Please perform the follow steps to set the "User name" and "Password", before the user login the "Telnet" and "FTP" of the "WinPAC/ViewPAC".

Add a User for FTP and Telnet

- Step1:** Run PAC utility and Click "Network -> Login Tab"
- Step2:** Type the user name and password. (The length of input characters must be less than 20.)
- Step3:** Press "Add" button.



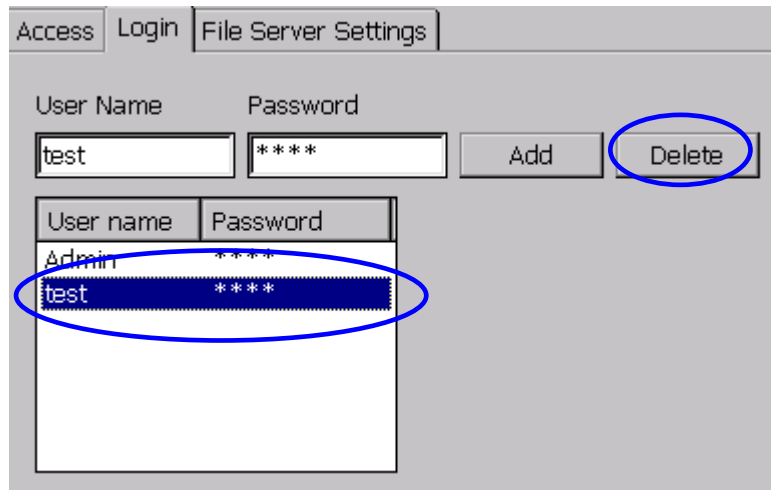
Classification	System and Application FAQ on WinCE PAC				No.	2-017-00	
Author	Eric_Shiu	Version	1.0.0	Date	2018/04/27	Page	2/5

Delete a User for FTP and Telnet

Step1: Click any user in the “User name” field.

Step2: Display the user name that is chosen.

Step3: Press “Delete” button to delete the user name.



Classification	System and Application FAQ on WinCE PAC				No.	2-017-00	
Author	Eric_Shiu	Version	1.0.0	Date	2018/04/27	Page	3/5

Use Telnet to Login WinPAC from PC

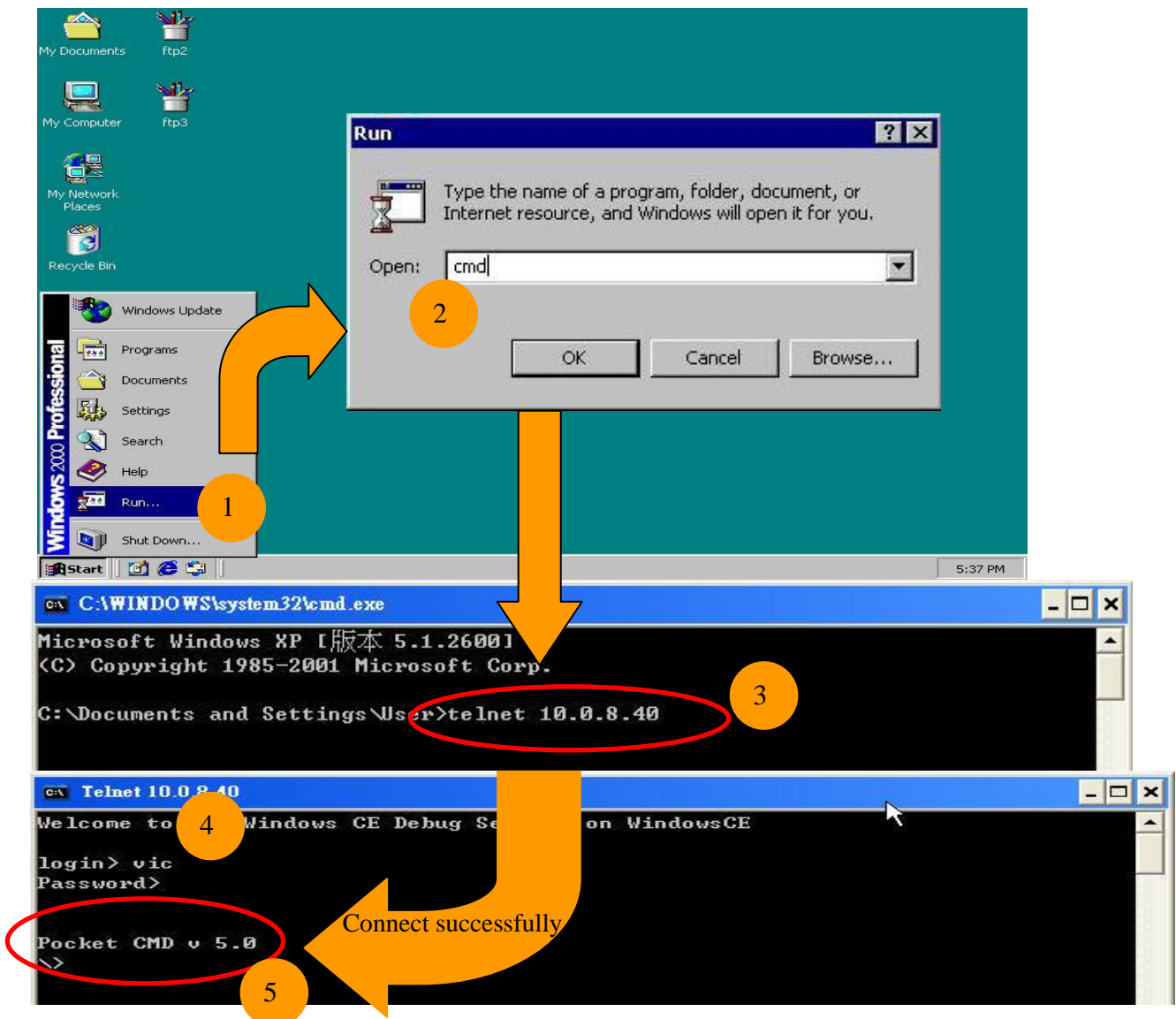
Step1: Start → Run on PC.

Step2: Type “cmd” to call a console window.

Step3: Type “telnet (IP address)” to connect to WinPAC.

Step4: If connection operation succeeds, type user name and password to login.

Step5: Login successfully.



Classification	System and Application FAQ on WinCE PAC				No.	2-017-00	
Author	Eric_Shiu	Version	1.0.0	Date	2018/04/27	Page	4/5

Use FTP to Login WinPAC from PC

On WinPAC side:

Step1: Set FTP in the PAC Utility.
FTP: Enable.
Allow Anonymous: Disable.

Step2: Click "Apply".

FTP

Enable Disable

Allow Anonymous Enable Disable

Set FTP default download directory to:

\\TEMP\ ... Apply

Set HTTP document root directory to:

\\windows\\www\\wwwpub\ ... Apply

Classification	System and Application FAQ on WinCE PAC				No.	2-017-00	
Author	Eric_Shiu	Version	1.0.0	Date	2018/04/27	Page	5/5

On PC side:

Step3: On PC, open a windows and type “ftp:// (IP address)” and press “Enter”.

Step4: Click right mouse button and select “Login As...”.

Step5: Input user name and password.

