

Classification	WinPAC Development FAQ				No.	5-013-00	
Author	Tunglu-Yu	Version	1.0.0	Date	2018/03/23	Page	1/3

## How to use Auto dial 3G/4G GPRS network and redial when the network disconnected

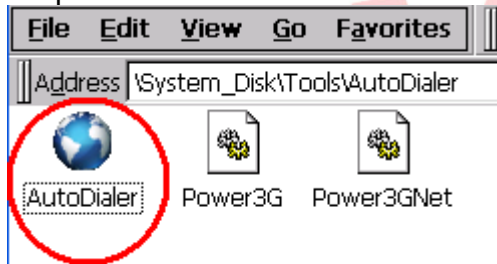
Applies to:

Platform	OS version	WinPAC/ViewPAC utility version
WP-8x2x	All versions	Do not matter with the utility.
WP-9x2x		
WP-523x		
WP-224x		
VP-x231		
VP-x201		

The AutoDialer allows user to automatically dial GRPS network after boot. When the GRPS network disconnect the AutoDialer will automatically re-dial Internet access. To setting the AutoDialer, perform the following steps:

**Note:** Before installing the SIM card, please cancel the PIN lock function of SIM card; otherwise you will not be able to dial the Internet

Step 1: Execute the AutoDialer.exe in the \\system disk\tools\AutoDialer folder.



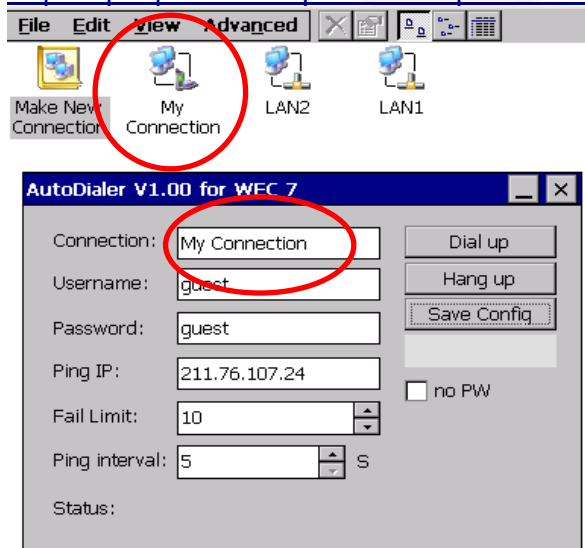
Step 2: Setting connection data.

(1) Connection : 3G/4G GPRS connect name, in the “Start->Settings->Network and Dialup Connections”

Note: Please refer to the document to connect with the 3G/4G network.

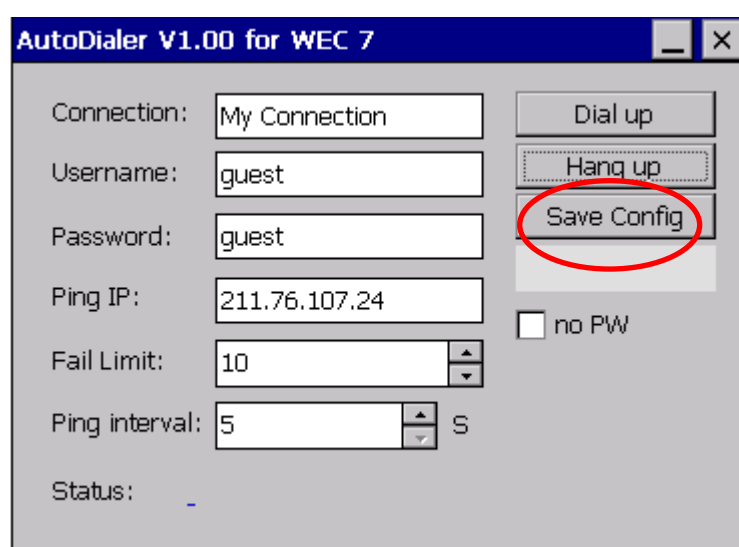
FAQ: w2-026-1\_How\_to\_connect\_with\_the\_mobile\_network\_en.pdf

[http://ftp.icpdas.com/pub/cd/winpac\\_am335x/wp-5231/document/faq/system\\_maintenance/](http://ftp.icpdas.com/pub/cd/winpac_am335x/wp-5231/document/faq/system_maintenance/)

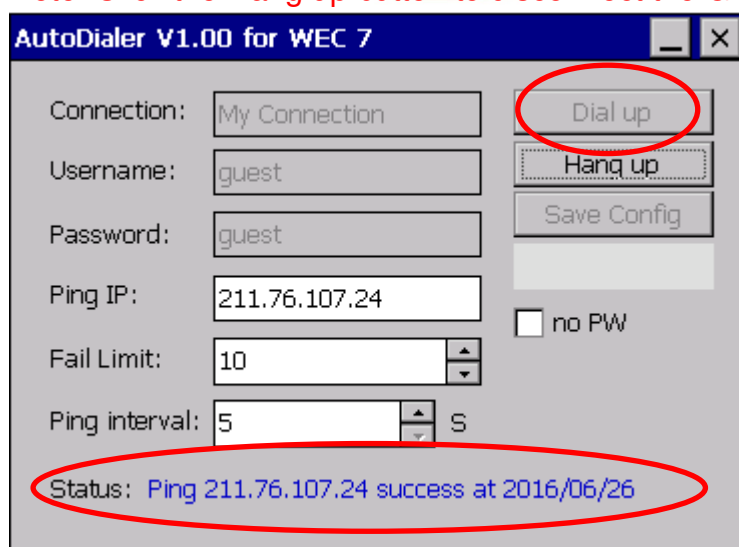


Classification	WinPAC Development FAQ				No.	5-013-00	
Author	Tunglu-Yu	Version	1.0.0	Date	2018/03/23	Page	2/3

- (2) Username :GPRS network user name, get by the ISP.
- (3) Password : GPRS network user password, get by the ISP.  
e.g. : If your ISP locate at Taiwain the user name and password are both“guest”.
- (4) Ping IP: It will periodically ping this ip-> preset as 211.76.107.27([www.google.com](http://www.google.com)) after connecting to the internet.
- (5) Fail Limit: **If the ping IP failed exceed this value, the network is considered a disconnected.**  
The program will automatically redial GPRS network.
- (6) Ping interval: Ping IP( Second).
- (7) Statu: Connect status description.

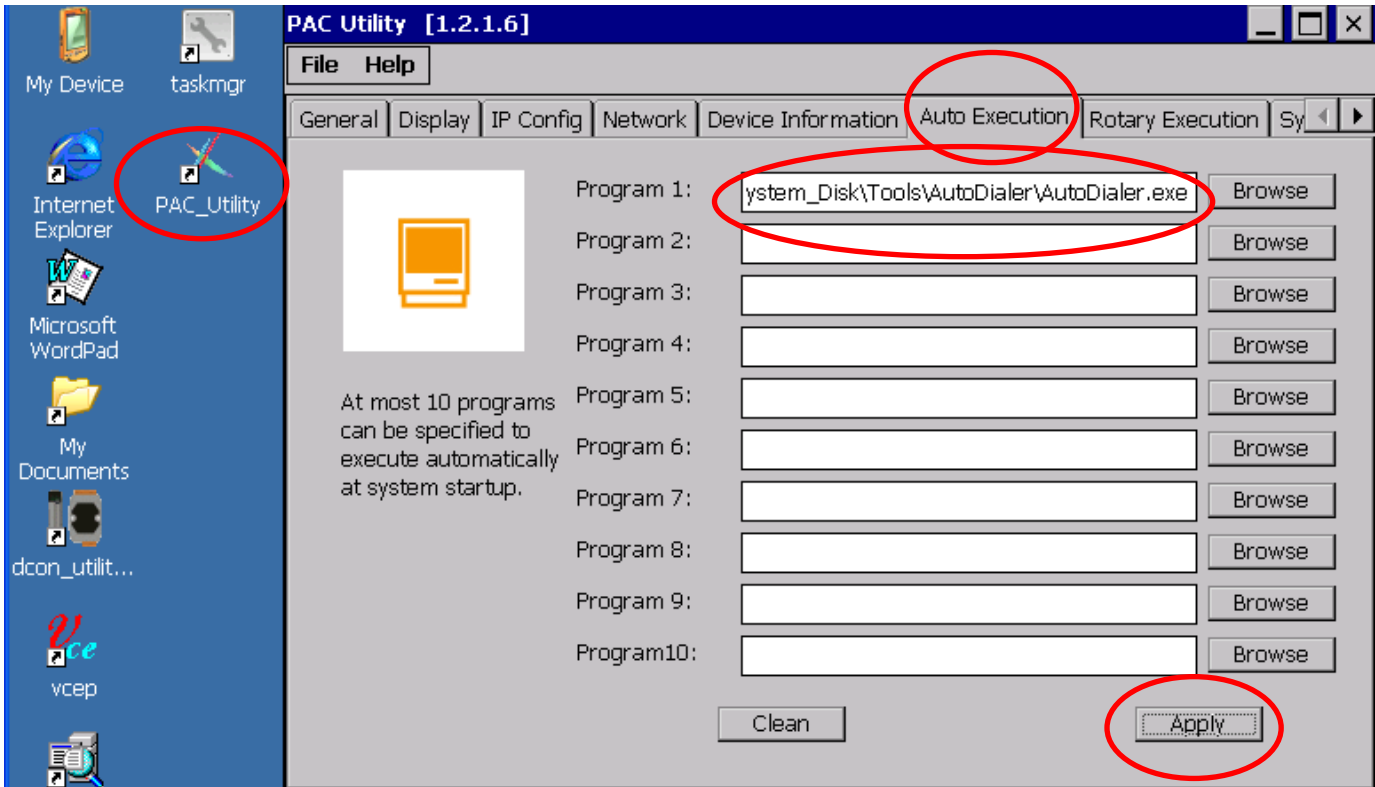


Step 4: Click the “Dial up” button, connenting to the GPRS network.  
The status will show the Ping IP success after connecting to the internet.  
**Note: Click the Hang up button to disconnect the GPRS network.**



Classification	WinPAC Development FAQ				No.	5-013-00	
Author	Tunglu-Yu	Version	1.0.0	Date	2018/03/23	Page	3/3

Step 5: Execute the PAC\_utility on the desktop to set the "Auto Execution" the AutoDialer.exe after boot.



Step 6: The AutoDialer.exe will automatically connect to the GPRS network after reboot the device.

