

Classification	System and Application FAQ on WinCE PAC				No.	2-014-00	
Author	Eric_Shiu	Version	1.0.0	Date	2018/04/27	Page	1/4

How to configure an authoritative time server in Windows Server

Applies to:

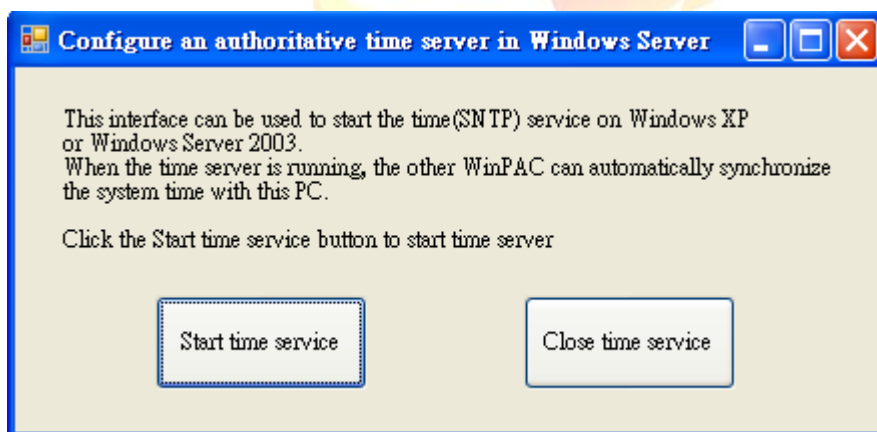
<i>Platform</i>	<i>OS Version</i>	<i>PAC Utility Version</i>
<i>WinPAC</i>	<i>All Versions</i>	<i>All Versions</i>
<i>ViewPAC</i>	<i>All Versions</i>	<i>All Versions</i>

The system time on the WinPAC is not always accurate, so you may need to use an authoritative time server in order to synchronize the system time on WinPAC. However, many people rely on the time server in their own network environment for security reasons. However the may not depend on an active internet connection and the availability of an external time server. To overcome this, you can use the Windows system be the PC as an authoritative LAN time server. ICPDAS now provide a program that allows you to control the Windows XP or Windows 2000 time sever settings, so that you can synchronize the system time on Win PAC with the LAN time server.

To configure an authoritative time server in Windows XP or Windows 2000, perform the following steps:

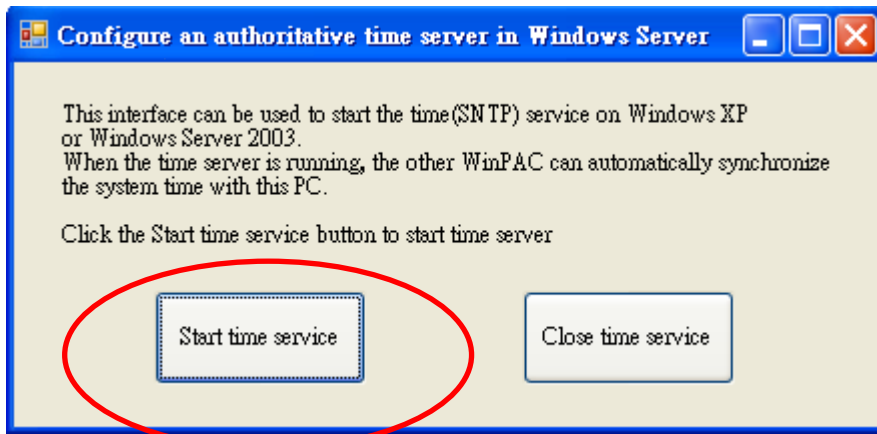
From the PC Side

Step 1: Execute the SNTP_server_interface.exe program to set the time server on the PC. (The SNTP_server_interface.exe program is located at CD:\\napdos\wp-8x4x_ce50\PC_Tools\SNTP_server_interface)

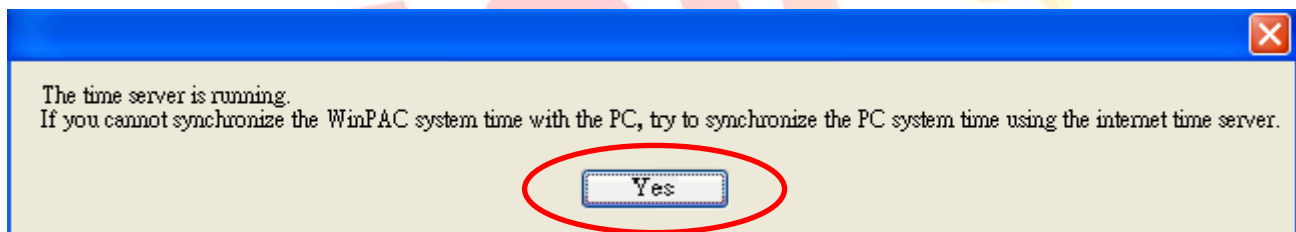


Classification	System and Application FAQ on WinCE PAC				No.	2-014-00	
Author	Eric_Shiu	Version	1.0.0	Date	2018/04/27	Page	2/4


Step 2: Click the “Start time service” button to start the time server. (If you want to close the time service, click the “Close time service” button)



Step 3: After starting the time service, you will see the following message box. (click the “Yes” button to continue.)



Tips & Warnings

-  Before you synchronize the WinPAC system time with the LAN time server, make sure the WinPAC and LAN time server can be connected to each other.

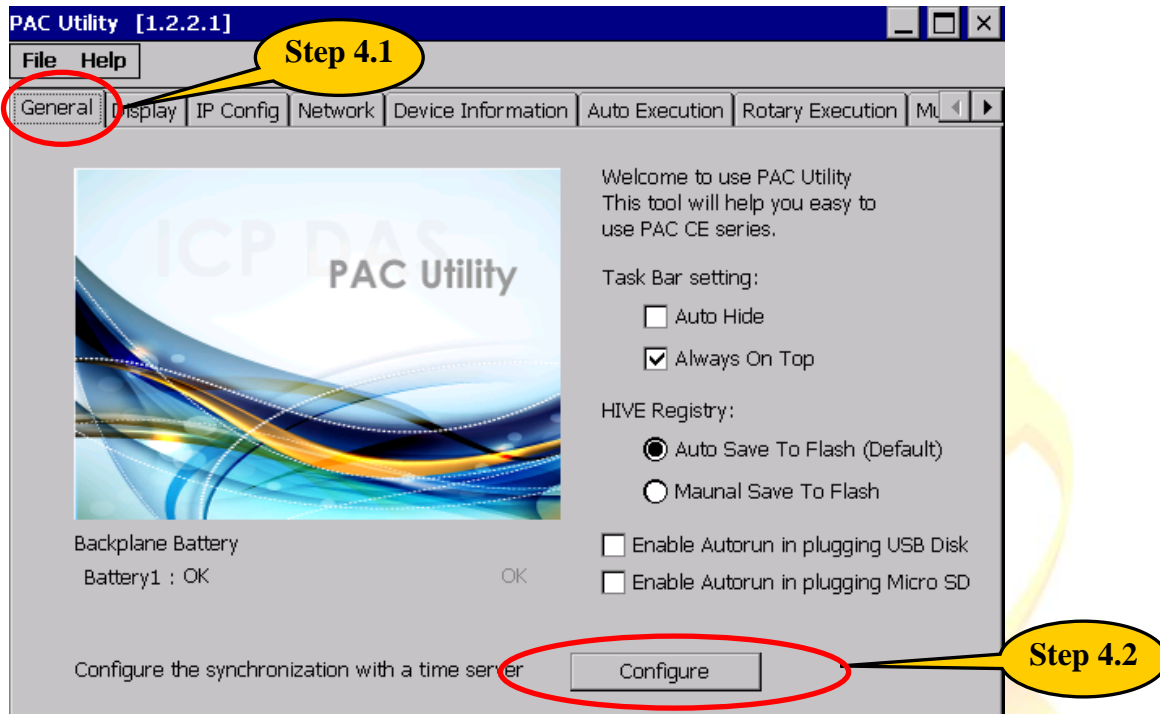
Classification	System and Application FAQ on WinCE PAC				No.	2-014-00	
Author	Eric_Shiu	Version	1.0.0	Date	2018/04/27	Page	3/4

From the WinPAC/ViewPAC Side

Step 4: Synchronize the WinPAC system time with the LAN time server.

Step 4.1: Execute the PAC utility on the desktop and click the “General” page.

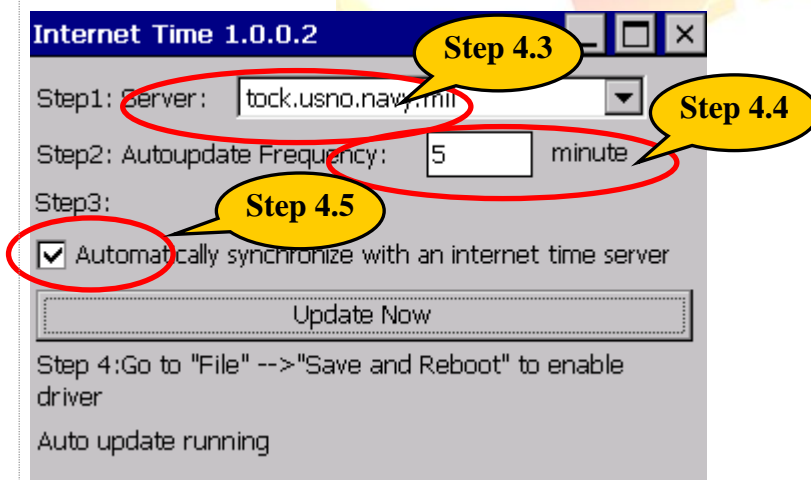
Step 4.2: Click the “Configure” button.



Step 4.3: Enter the IP address for the LAN time server.

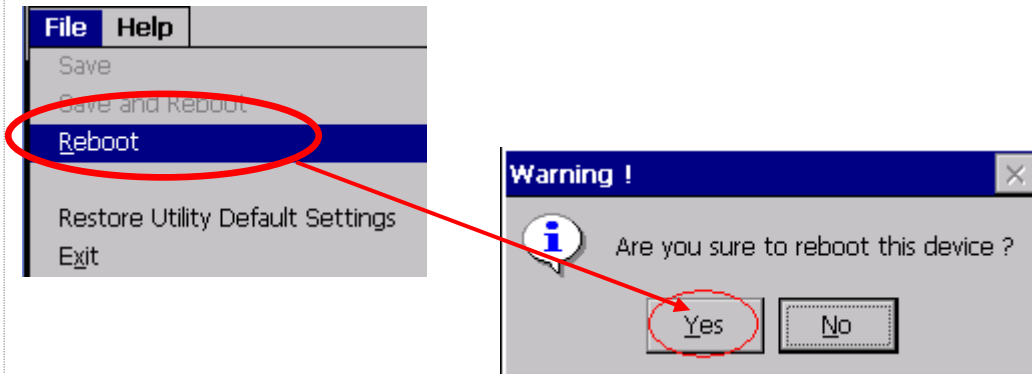
Step 4.4: Enter a value for the Synchronization frequency.

Step 4.5: Check the “Automatically synchronize with an internet time server” check box.



Classification	System and Application FAQ on WinCE PAC				No.	2-014-00	
Author	Eric_Shiu	Version	1.0.0	Date	2018/04/27	Page	4/4

Step 4.6: Click the “File-> Reboot->Yes”



Step 4.7: After rebooting, the service for automatically synchronizing with the internet time server will execute and update the system time after connecting to the internet.

Step 4.8: Click the “Update Now” button to immediately update the system time.

