

Classification	System and Application FAQ on WinCE PAC				No.	2-003-00	
Author	Eric_Shiu	Version	1.0.0	Date	2018/04/27	Page	1/3

How to set the startup programs on WinCE PAC

Applies to:

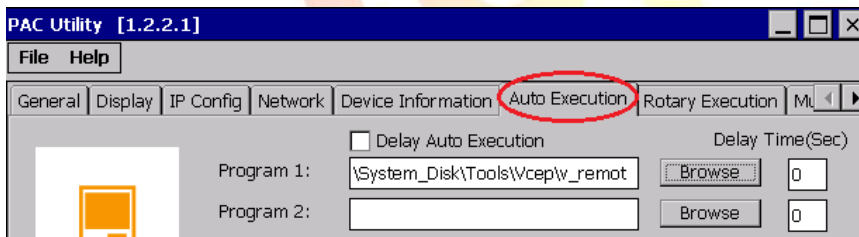
Platform	OS Version	PAC Utility Version
WinPAC	All Versions	All Versions
ViewPAC	All Versions	All Versions

In PAC utility, it offers an easy-to-use interface to manage the startup programs. The programs which are set in the utility will run automatically at system startup.

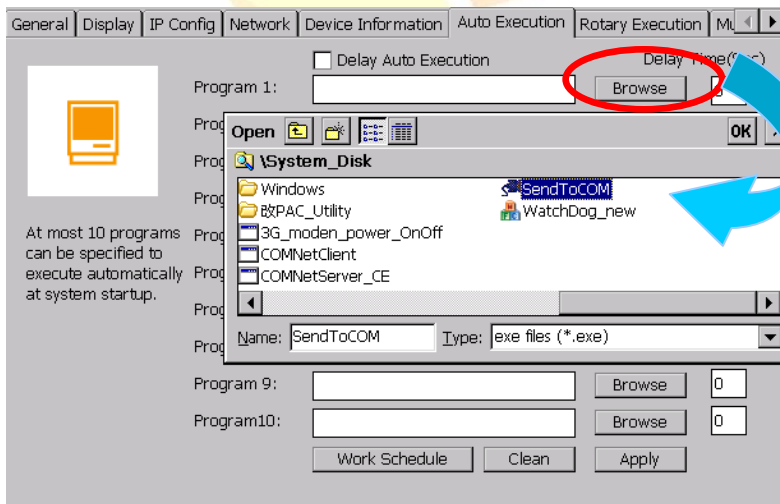
Here we illustrate the steps of how to set the startup programs and clear those settings.

Part 1. Set the startup programs

Step1. Start the PAC Utility on the desktop and then select the “Auto Execution” tag.

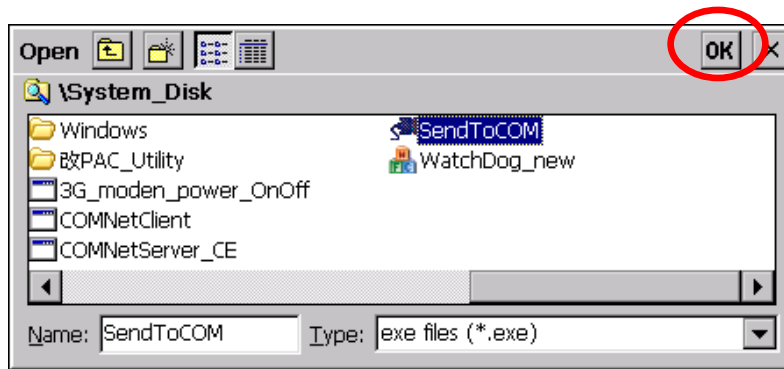


Step2. Click the “Browse” button and then select the program you want to run automatically after PAC boot-up.

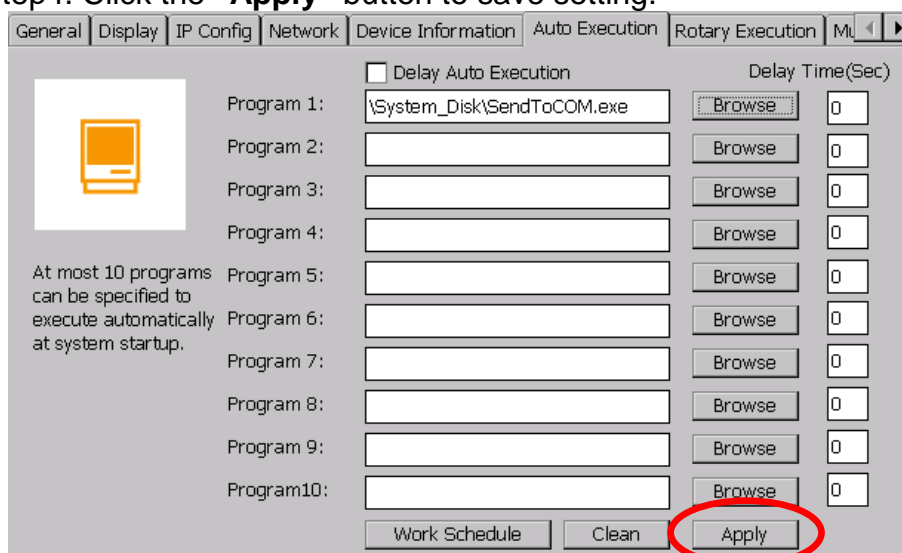


Step3. Click the “OK” button.

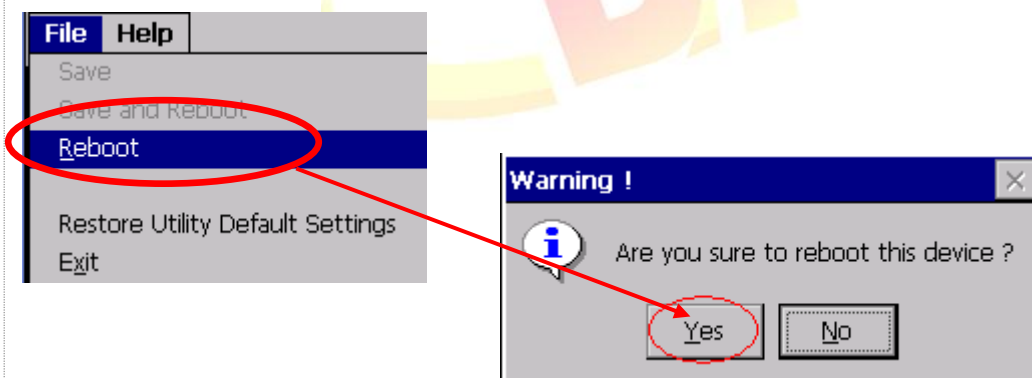
Classification	System and Application FAQ on WinCE PAC				No.	2-003-00	
Author	Eric_Shiu	Version	1.0.0	Date	2018/04/27	Page	2/3



Step4. Click the “Apply” button to save setting.



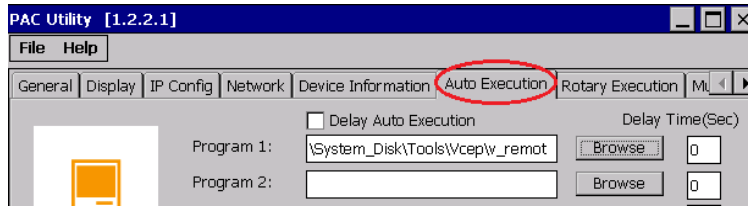
Step5. Reboot the PAC, the specified programs will run automatically.
Click “File” → “Reboot→Yes”



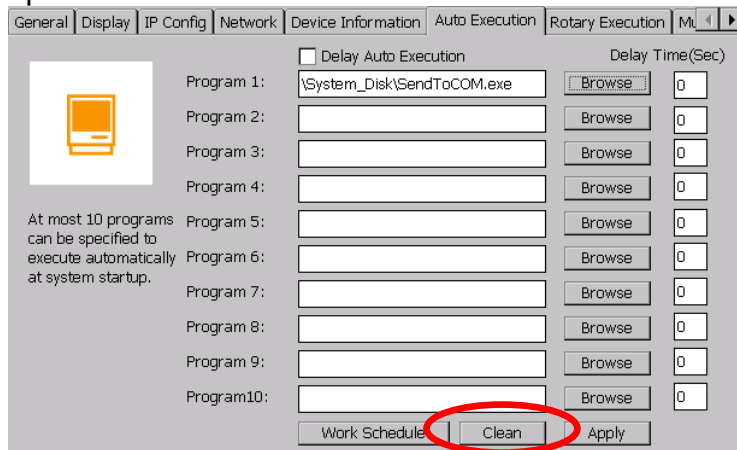
Part 2. Clear the startup programs settings

Classification	System and Application FAQ on WinCE PAC				No.	2-003-00	
Author	Eric_Shiu	Version	1.0.0	Date	2018/04/27	Page	3/3

Step1. Start the WinPAC/ViewPAC Utility click the “Auto Execution” tag.



Step2. Click the “Clean” button .



Step3. Click the “Apply” button to save setting.

