

Classification	System and Application FAQ on WinCE PAC				No.	1-004-11	
Author	Tunglu_Yu	Version	1.0.0	Date	2018/10/28	Page	1/5

## How to set up a Penmount serial touch panel with i-811xiw module

*Applies to:*

<i>Platform</i>	<i>OS Version</i>	<i>PAC Utility Version</i>
<i>WinPAC</i>	<i>All Versions</i>	<i>All Versions</i>

Only i-811xw series (i-8114iW/i-8142W/i-8142iW) provide the RS232 port which can be connected with the Penmount serial touch panel.

Refer to the w1-007-01\_how\_to\_label\_serial\_ports\_on\_i-8112\_i-8114\_i-8142\_i-8144\_with\_COMx\_english.pdf

### Tips & Warnings



All Serial COM Ports of i-8114xW for WP-8000 are standard male RS-232 COM Ports.

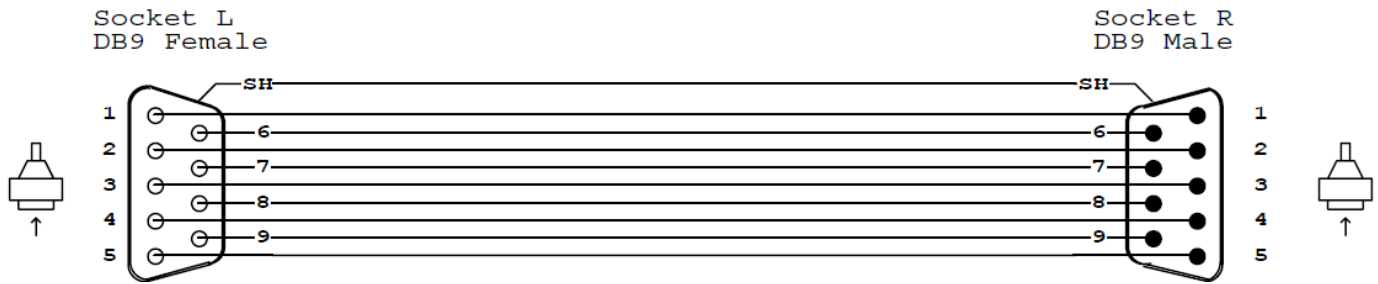


i-8114xW COM port number assigned by OS set by WinPAC utility, The table as following

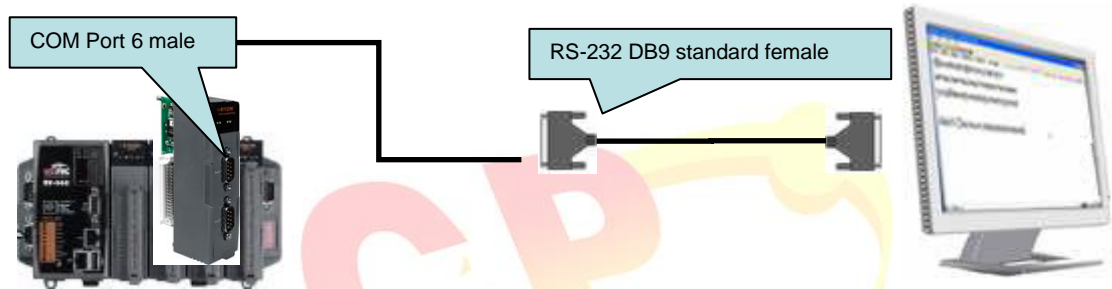
Slot	Module	Port	COM port definition
0	i-8114W/i-8114iw	1	COM6
		2	COM7
		3	COM8
		4	COM9
1	i-8114W/i-8114iw	1	COM10
		2	COM11
		3	COM12
		4	COM13
2	i-8114W/i-8114iw	1	COM14
		2	COM15
		3	COM16
		4	COM17
...			
7	i-8114W/i-8114iw	1	COM34
		2	COM35
		3	COM36
		4	COM37

Classification	System and Application FAQ on WinCE PAC				No.	1-004-11	
Author	Tunglu_Yu	Version	1.0.0	Date	2018/10/28	Page	2/5

## Standard Wiring



## Connecting to COM6



To use a Penmount serial touch panel, perform the following steps:

### Step 1: Location of the devices for the touch panel

The penmount serial drivers are located at

1. CD: \System\_Disk\External\_device\_driver\ penmount\_serial\_touch\_v20091001.cab or PM6000\_Serial\_TOUCH\_V20100614.CAB
2. [http://ftp.icpdas.com/pub/cd/winpac\\_am335x/wp-5231/system\\_disk/external\\_device\\_driver/](http://ftp.icpdas.com/pub/cd/winpac_am335x/wp-5231/system_disk/external_device_driver/)

### Note:

In the actual test by us

PenMount\_Serial\_TOUCH\_Vyyyyymmdd.CAB is used for ADP-1080T-R(Aplex), 3M DynaPro, PenMount, RS-232 Touch Panel and etc.

PM6000\_Serial\_TOUCH\_Vyyyyymmdd.CAB is used for AFL-08MH/T-R-R11 and etc.

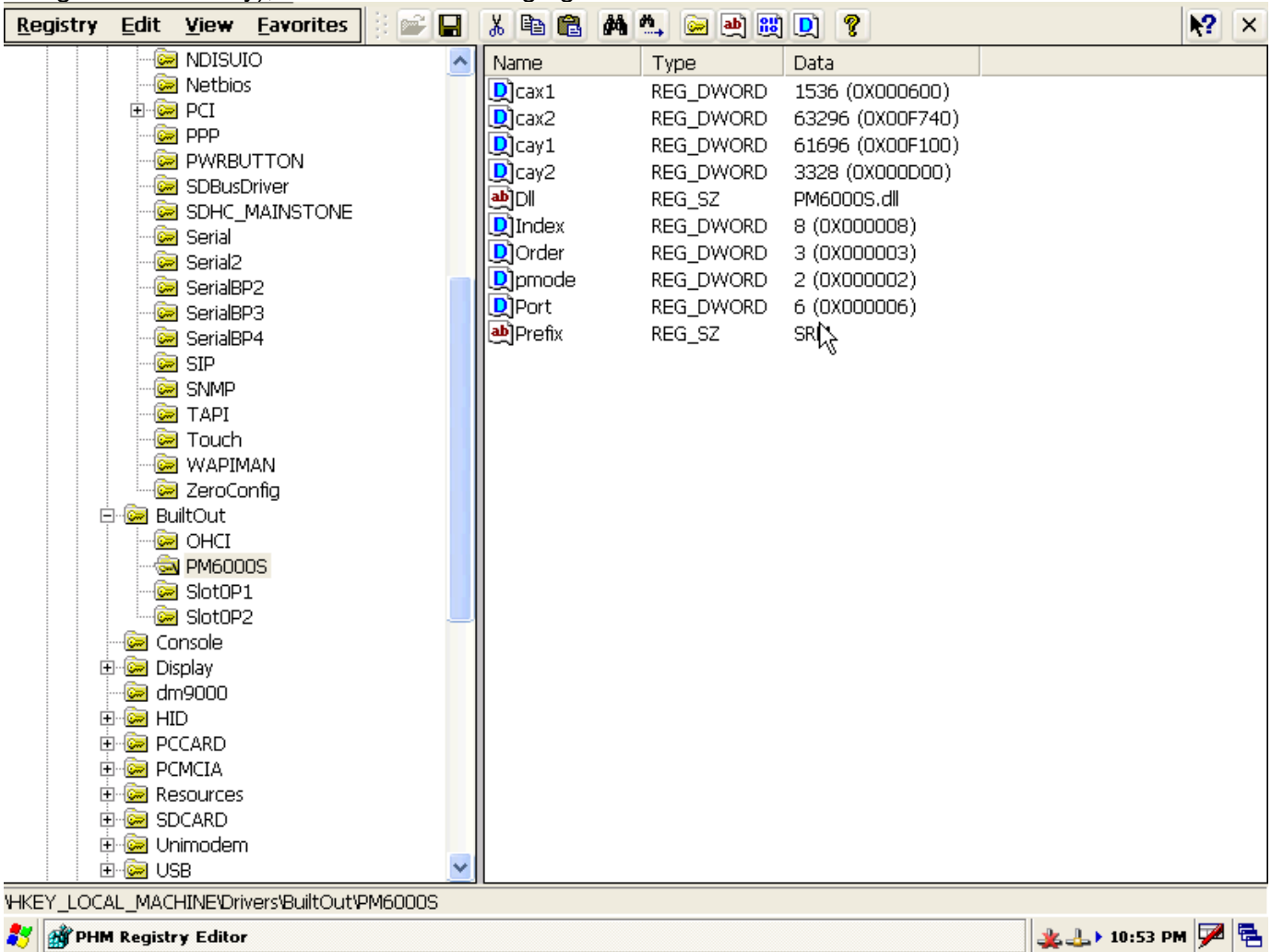
### Step 2: Install penmount\_serial\_touch\_v20091001.cab or PM6000\_Serial\_TOUCH\_V20100614.CAB

- 2.1. Double-click the cab file, and then click "ok".

Classification	System and Application FAQ on WinCE PAC				No.	1-004-11	
Author	Tunglu_Yu	Version	1.0.0	Date	2018/10/28	Page	3/5

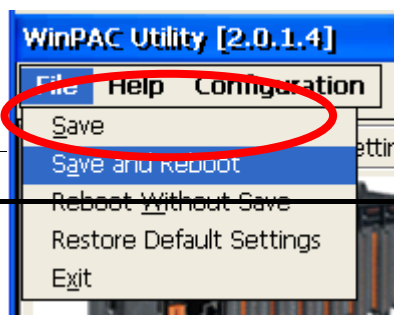


**Step 3:** Run \System\_Disk\tools\RegistryEditor\regedit.exe and modify the Port key on HKEY\_LOCAL\_MACHINE\Drivers\BuiltOut\PM6000S\ to 6 (If Port1 of i-811x module sets to COM6 using the PAC utility), refer to the following figure.



**Step 4: Reboot** your WinPAC.

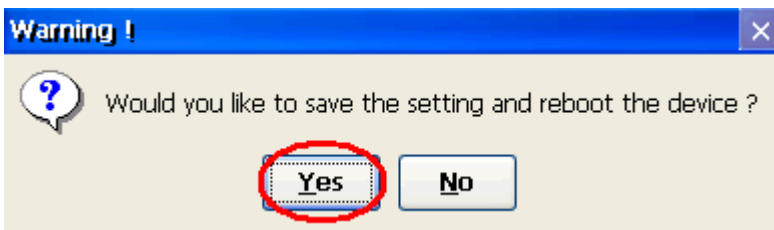
3.1. Start the PAC utility on the desktop. Click the "File->Reboot" menu option.



Technical document

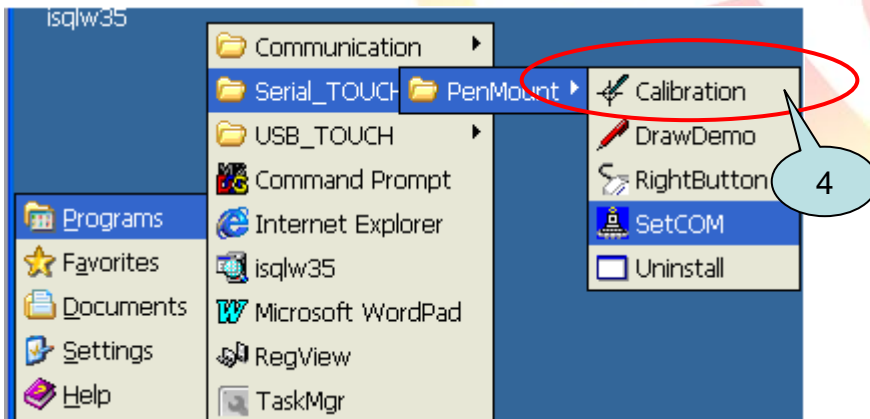
Classification	System and Application FAQ on WinCE PAC				No.	1-004-11	
Author	Tunglu_Yu	Version	1.0.0	Date	2018/10/28	Page	4/5

3.2. Click the “Yes” button and wait for the device to reboot.



**Step 4: Execution** the calibration program.

4.1. Click Start->Programs->Serial\_TOUCH-> Penmount->Calibration.

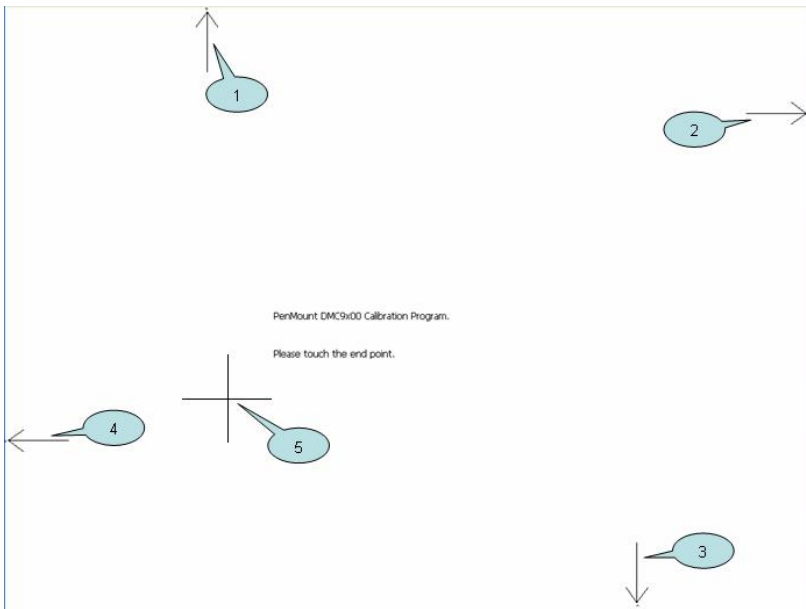


4.3. Perform the calibration process.

4.3.1. Touch the end point and draw a line in the direction of the arrow.

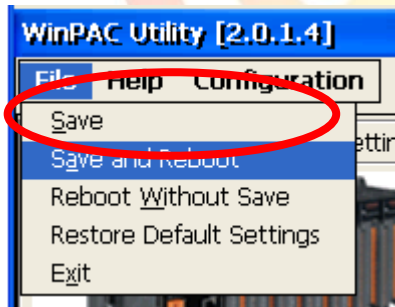
4.3.2. Touch the “+” icon on the monitor, to perform the calibration process.

Classification	System and Application FAQ on WinCE PAC				No.	1-004-11	
Author	Tunglu_Yu	Version	1.0.0	Date	2018/10/28	Page	5/5



**Step 5: Reboot** your WinPAC.

5.1. Start the PAC utility on the desktop. **Click** the “File->save and Reboot” menu option.



5.2. **Click** the “Yes” button and wait for the device to reboot.

