



# WP-5231-CE7 Quick Start

Version 1.1, September 2016

## What's in the Box?

In addition to this guide, the package includes the following items:



WP-5231-CE7



A microSD card and  
a micro SD/SD adapter



Software Utility CD



Screw Driver  
(1C016) 2.4 mm

## Technical Support

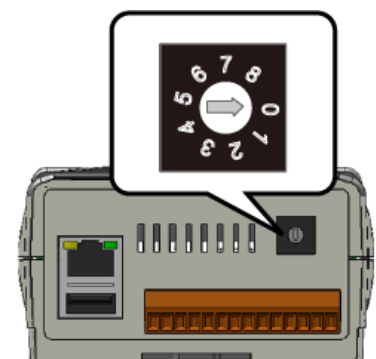
### WP-5000-CE7 User Manual

CD:\WinPAC\_AM335x\Wp-5231\Document\  
[http://ftp.icpdas.com/pub/cd/winpac\\_am335x/wp-5231/document/](http://ftp.icpdas.com/pub/cd/winpac_am335x/wp-5231/document/)

# 1

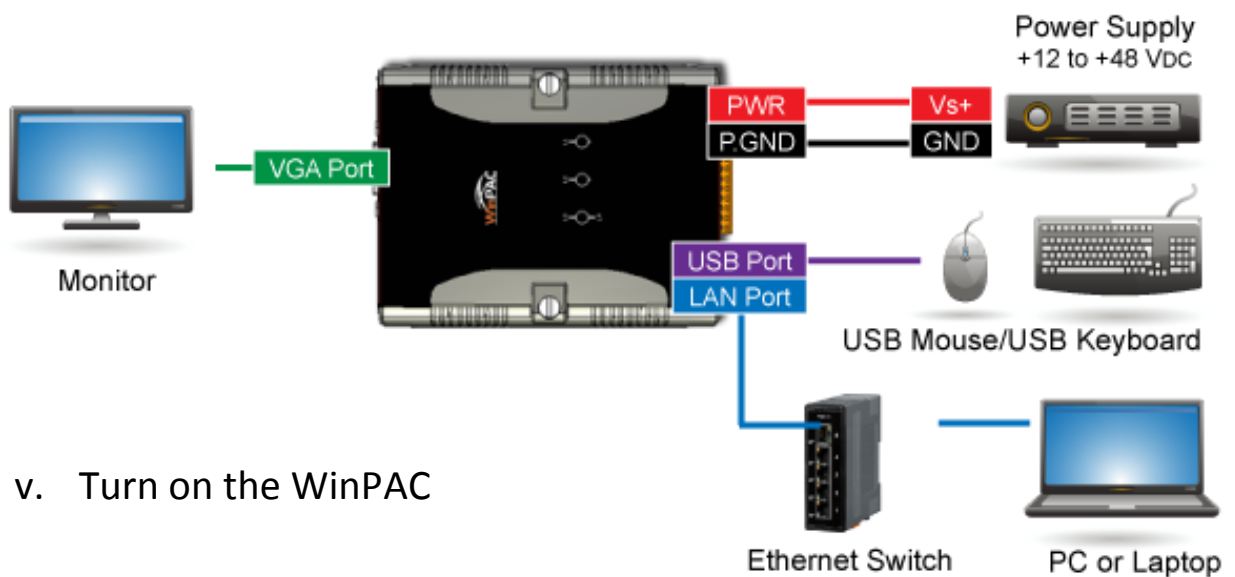
## Configuring the Boot Mode

Before starting any installation, be sure that the switch is placed in the "0" position.



## 2 Connecting to PC, Monitor and Power Supply

- i. Connect the mouse or keyboard to the USB port.
- ii. Connect PC to the Ethernet port through an Ethernet switch .
- iii. Connect the power supply (+12 to +48 V<sub>DC</sub>) to PWR and GND terminals.
- iv. Connect the monitor to the VGA port.



- v. Turn on the WinPAC

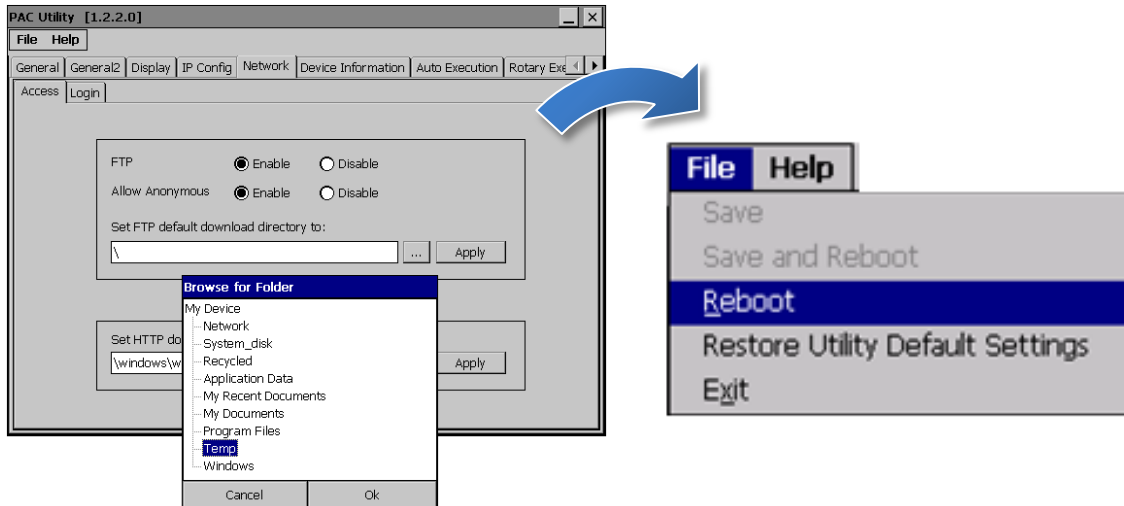
## 3 Using PAC Utility to Manage the WinPAC

Step 1: Double-click the PAC Utility shortcut on the desktop



Step 2: Configure IP address (DHCP), FTP Server, Auto Execution files..., etc

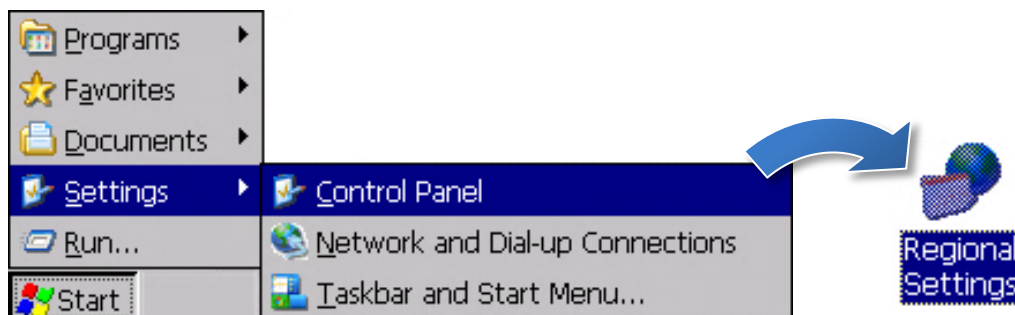
Step 3: Reboot the WinPAC for changes to take effect



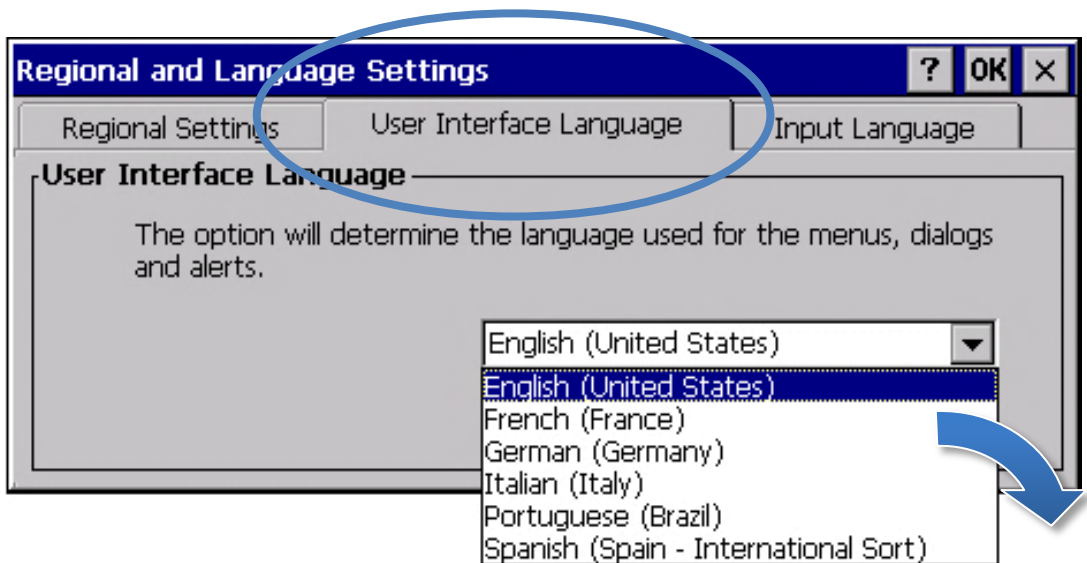
# 4

## Changing the User Interface Language

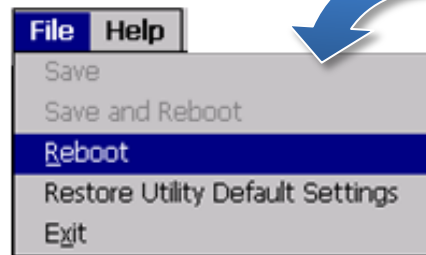
Step 1: Click Start menu, point to Settings, click Control Panel, and then click Regional Settings



Step 2: Click User Interface Language tab, choose to your local language, and then click OK



Step 3: Run the PAC Utility, and then reboot the WinPAC for changes to take effect



# 5

## Inserting and Wiring to the XV-Board

XV-Board expansion I/O modules are used to expand the functions of the WP-5231-CE7.

For more information on how to install the XV-Board, please refer to section "2.2. Installing the XV-Board" in "WP-5000-CE7 User Manual"

For more details about XV-Board expansion I/O modules, please refer to

[http://www.icpdas.com/root/product/solutions/hmi\\_touch\\_monitor/touchpad/xv-board\\_selection.html](http://www.icpdas.com/root/product/solutions/hmi_touch_monitor/touchpad/xv-board_selection.html)

