

Classification	System and Application FAQ on XPAC				No.	2-015-00	
Author	Tunglu-Yu	Version	1.0.0	Date	2018/03/27	Page	1/2

How to use AutoRun in plugging USB Disk

Applies to:

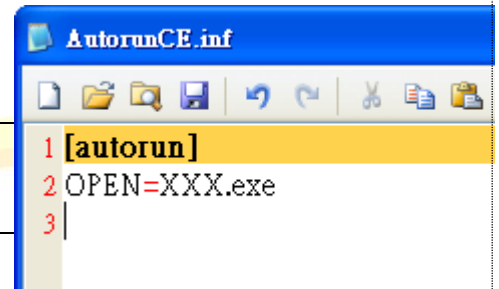
Platform	OS Version	PAC Utility Version
WinPAC	All Versions	All Versions
ViewPAC	All Versions	All Versions

You have to complete two parts, add file "AutorunCE.inf" in flash device, and enable this function at PAC_Utility

Part 1: Add file "AutorunCE.inf" in flash device

Copy this block to your AutorunCE.inf

```
[autorun]
OPEN=xxx.exe
```



This simple AutorunCE.inf file specifies XXX.exe as the application to run when AutoRun is activated.

[autorun]

The autorun section contains the default AutoRun commands.

OPEN=XXX.exe

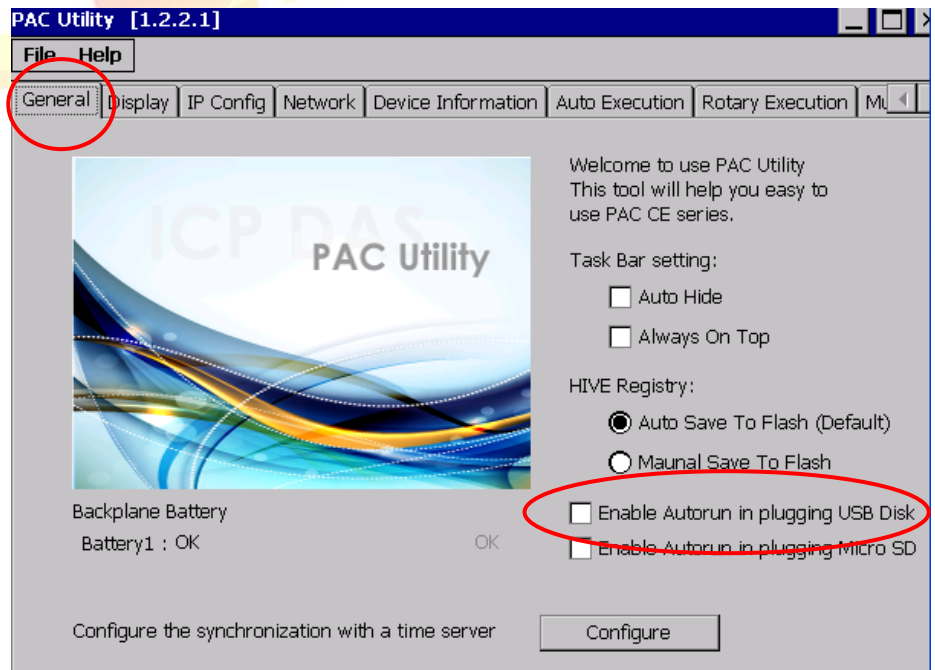
Specifies the path, file name to the application that AutoRun launches when a user plugging a flash device. It is the CreateProcess function that is called by AutoRun.

EX1: USB:\Notepad.exe

→ OPEN=INotepad.exe

EX2: USB:\NEW Folder\INotepad.exe

→ OPEN=NEW Folder\INotepad.exe



Classification	System and Application FAQ on XPAC				No.	2-015-00	
Author	Tunglu-Yu	Version	1.0.0	Date	2018/03/27	Page	2/2

Part2: Enable this function at PAC_Utility

Open PAC_Utility, and then select tab "General".Click checkbox "Enable Autorun in plugging USB Disk" and reboot.

