

Classification	System and Application FAQ on WinCE PAC				No.	2-024-00	
Author	Eric_Shiu	Version	1.0.0	Date	2018/04/27	Page	1/2

## How to Save the LCD Backlight Settings

Applies to:

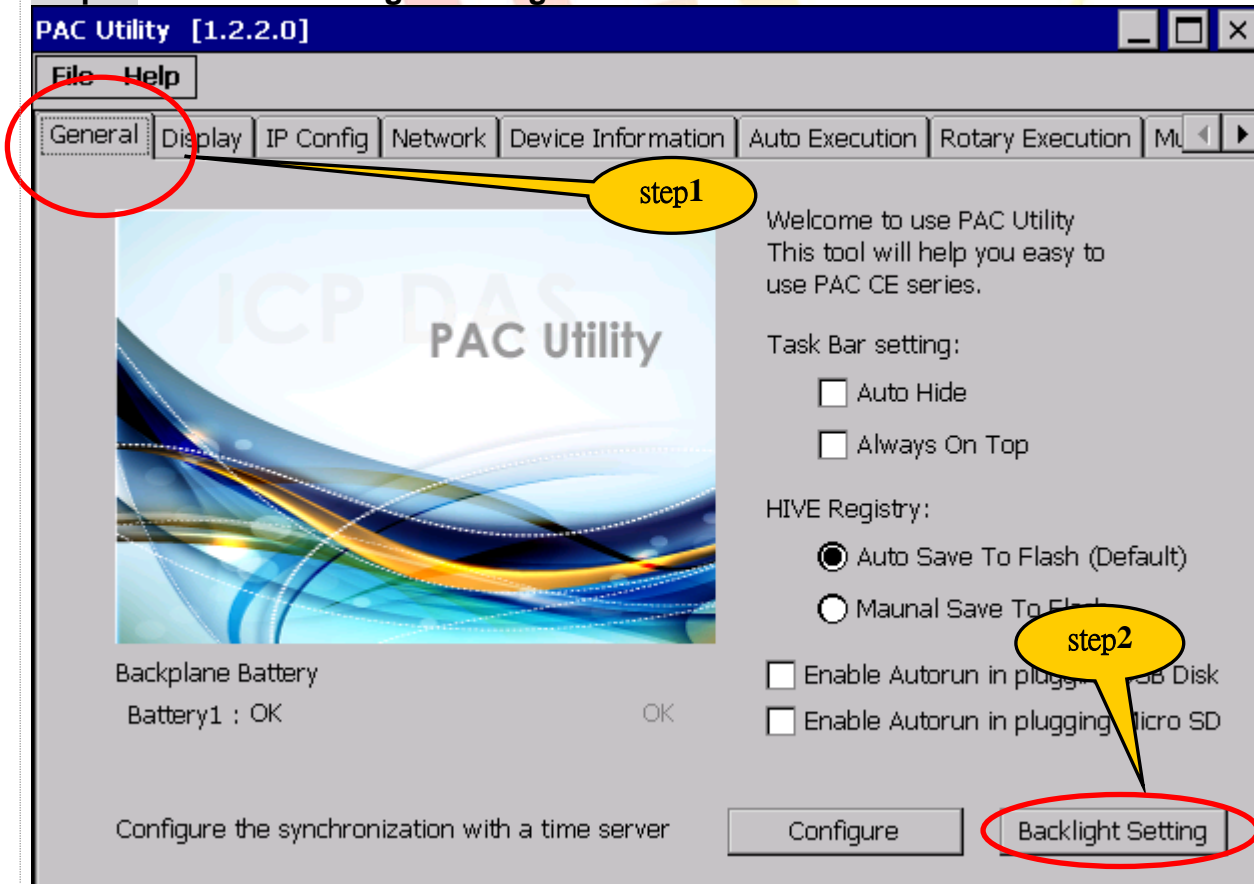
Platform	OS Version	PAC Utility Version
WinPAC	N/A	N/A
ViewPAC	All Versions	All Versions

Please perform the follow steps to configure the Backlight.

The OS allows the user to control the backlight brightness of ViewPAC touch panel and save the settings to ViewPAC.

**Step 1:** Run the PAC Utility and click the “General” tab.

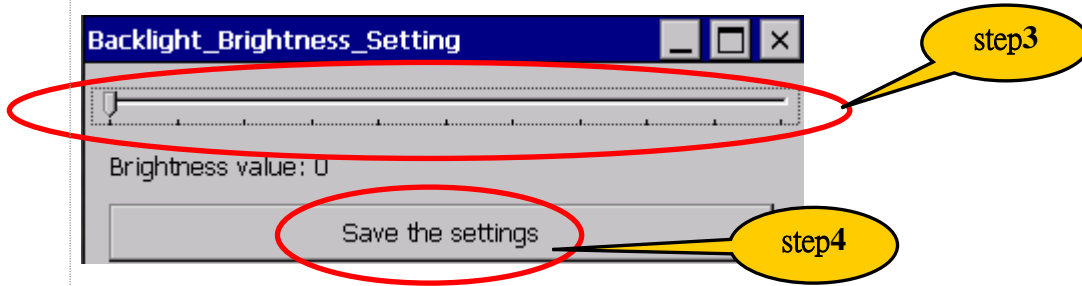
**Step 2:** Click the “Backlight settings” button.



**Step 3:** Adjust the brightness to the desired level using the slider.

Classification	System and Application FAQ on WinCE PAC				No.	2-024-00	
Author	Eric_Shiu	Version	1.0.0	Date	2018/04/27	Page	2/2

**Step 4:** Click the “Save the settings” button to save your changes.



ICP  
DAS