

Classification	System and Application FAQ on WinCE PAC				No.	2-007-00	
Author	Eric_Shiu	Version	1.0.0	Date	2018/04/27	Page	1/6

# How to add a shortcut to the desktop and programs

Applies to:

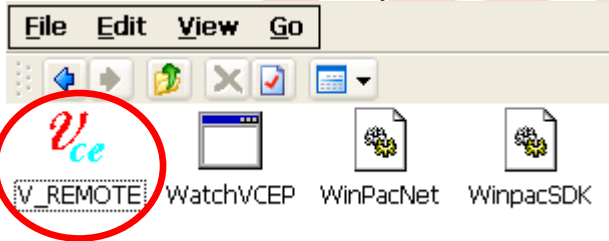
Platform	OS Version	PAC Utility Version
WinPAC	All Versions	All Versions
ViewPAC	All Versions	All Versions

Here we discuss how to add a shortcut to the desktop and start menu that can be saved after power off and on in part1, and how to delete the shortcut(s) in part2.

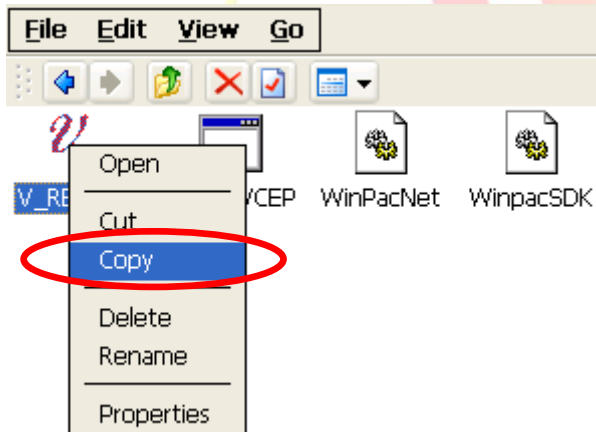
## Part 1. Adding a shortcut to the desktop

### Step 1: Create a shortcut.

1.1. Select the file for which you want create a shortcut.

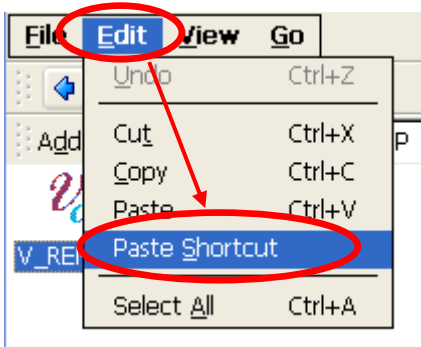


1.2. Right click the file name and then click "Copy".

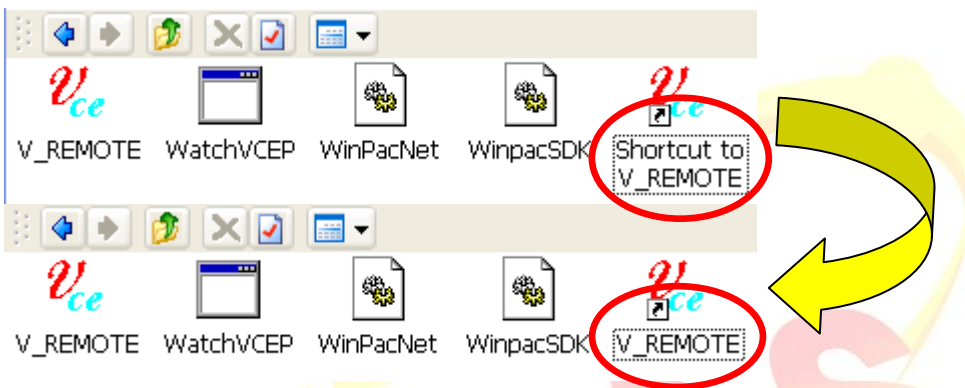


Classification	System and Application FAQ on WinCE PAC				No.	2-007-00	
Author	Eric_Shiu	Version	1.0.0	Date	2018/04/27	Page	2/6

1.3. Click the **“Edit”** menu option and then click **“Paste Shortcut”**.



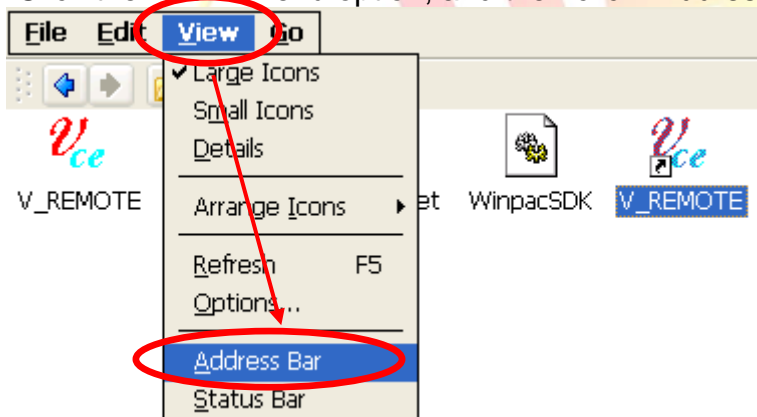
1.4. Rename the shortcut “shortcut to xx.ink” into **“xx.ink”**



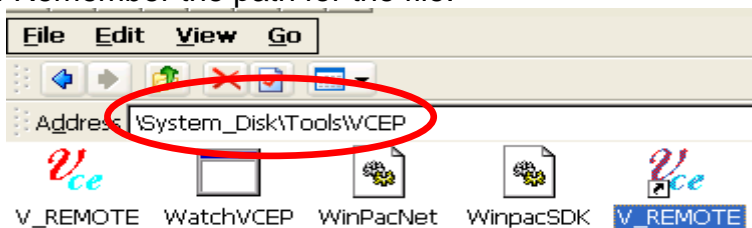
**Step 2: Add the shortcut to the desktop and programs menu.**

2.1. Get the path for the shortcut.

a. Click the **“View”** menu option, and then click **“Address Bar”**.



b. Remember the path for the file.

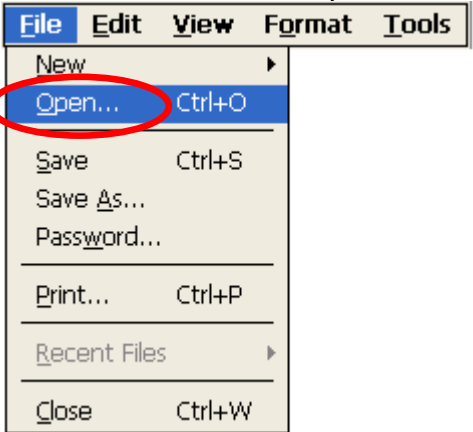


Classification	System and Application FAQ on WinCE PAC				No.	2-007-00	
Author	Eric_Shiu	Version	1.0.0	Date	2018/04/27	Page	3/6

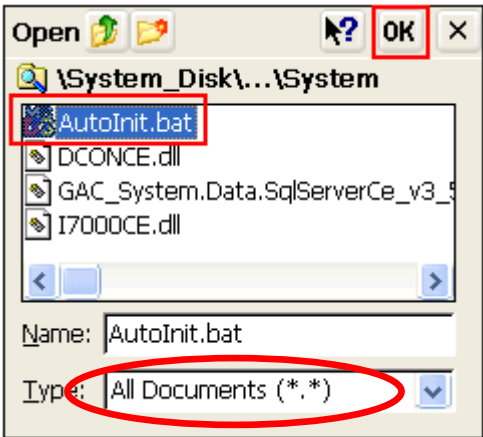
- 2.2. Open “AutoInit.bat” file with using Microsoft WordPad.  
a. Double Click the Microsoft WordPad icon on the desktop.



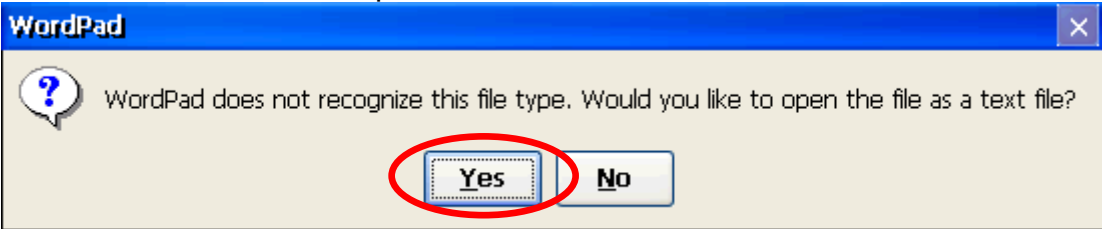
- b. Click the “File” menu option, and then click the “Open” item.



- c. Open the “AutoInit.bat” file from the “\System\_Disk\ICPDAS\System” folder.



- d. Click the “Yes” button to open the file.



Classification	System and Application FAQ on WinCE PAC				No.	2-007-00	
Author	Eric_Shiu	Version	1.0.0	Date	2018/04/27	Page	4/6

### 2.3. Add the shortcut information to “Autolnit.bat”.

copy \System\_Disk\Tools\WinPAC\_Utility\WINPAC\_Utility.lnk \Windows\Desktop  
copy \System\_Disk\Tools\WinPAC\_Utility\WINPAC\_Utility.lnk \Windows\Programs  
copy \System\_Disk\Tools\RegistryViewer\RegView.lnk \Windows\Desktop  
copy \System\_Disk\Tools\RegistryViewer\RegView.lnk \Windows\Programs  
copy \System\_Disk\Tools\TaskMgr\TaskMgr.lnk \Windows\Desktop  
copy \System\_Disk\Tools\TaskMgr\TaskMgr.lnk \Windows\Programs  
copy \System\_Disk\Tools\ISQLW35\isqlw35.lnk \Windows\Desktop  
copy \System\_Disk\Tools\ISQLW35\isqlw35.lnk \Windows\Programs  
copy \System\_Disk\Tools\WinPAC\_Utility\WINPAC\_Utility.lnk \Windows\@à±  
copy \System\_Disk\Tools\WinPAC\_Utility\WINPAC\_Utility.lnk \Windows\μ{;|¶°  
copy \System\_Disk\Tools\RegistryViewer\RegView.lnk \Windows\@à±  
copy \System\_Disk\Tools\RegistryViewer\RegView.lnk \Windows\μ{;|¶°  
copy \System\_Disk\Tools\TaskMgr\TaskMgr.lnk \Windows\@à±  
copy \System\_Disk\Tools\TaskMgr\TaskMgr.lnk \Windows\μ{;|¶°  
copy \System\_Disk\Tools\ISQLW35\isqlw35.lnk \Windows\@à±  
copy \System\_Disk\Tools\ISQLW35\isqlw35.lnk \Windows\μ{;|¶°  
copy \System\_Disk\Tools\WinPAC\_Utility\WINPAC\_Utility.lnk \Windows\×ÀÄæ  
copy \System\_Disk\Tools\WinPAC\_Utility\WINPAC\_Utility.lnk \Windows\³IDò  
copy \System\_Disk\Tools\RegistryViewer\RegView.lnk \Windows\×ÀÄæ  
copy \System\_Disk\Tools\RegistryViewer\RegView.lnk \Windows\³IDò  
copy \System\_Disk\Tools\TaskMgr\TaskMgr.lnk \Windows\×ÀÄæ  
copy \System\_Disk\Tools\TaskMgr\TaskMgr.lnk \Windows\³IDò  
copy \System\_Disk\Tools\ISQLW35\isqlw35.lnk \Windows\×ÀÄæ  
copy \System\_Disk\Tools\ISQLW35\isqlw35.lnk \Windows\³IDò  
copy \System\_Disk\Tools\VCEP\w\_remote.lnk \Windows\Desktop  
copy \System\_Disk\Tools\VCEP\w\_remote.lnk \Windows\Programs

Path for the shortcut file.

Name of the shortcut file.

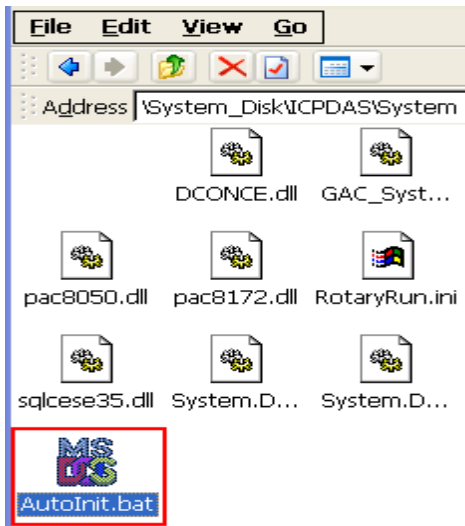
Copy the shortcut file to the Desktop folder and the Programs

### 2.4. Click “File”, and then click “Save” to save the edit.

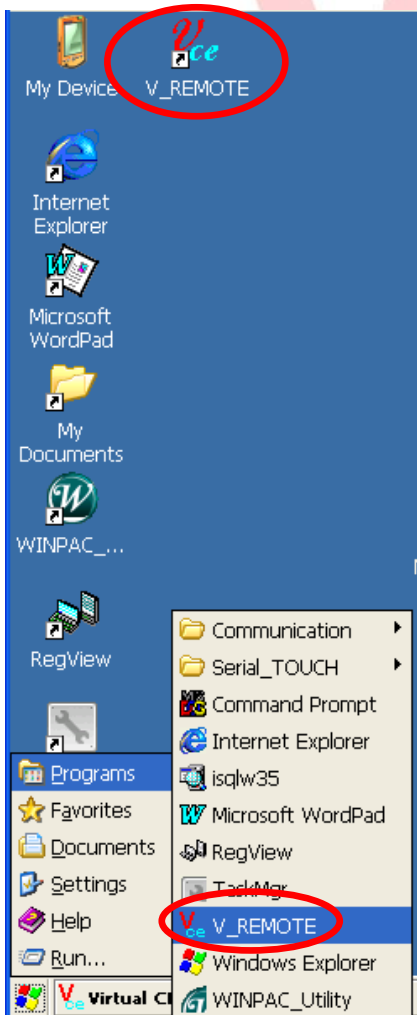
File	Edit	View	Format	Tools
New				s\WinPAC_Utilit
Open...	Ctrl+O			s\WinPAC_Utilit
Save	Ctrl+S			s\RegistryViewer
Save As...				s\RegistryViewer
Password...				s\TaskMgr\Task
Print...	Ctrl+P			s\TaskMgr\Task
Recent Files				s\ISQLW35\isqlw
Close	Ctrl+W			s\ISQLW35\isqlw

Classification	System and Application FAQ on WinCE PAC				No.	2-007-00	
Author	Eric_Shiu	Version	1.0.0	Date	2018/04/27	Page	5/6

2.5. Double click the “**AutoInit.bat**” file icon in the “\System\_Disk\ICPDAS\System” folder.



The shortcut files will appear on the “Desktop” and in the “Programs” menu.

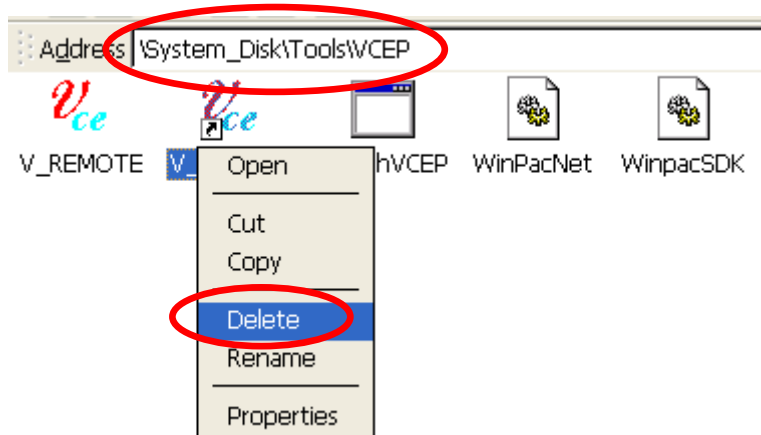


Classification	System and Application FAQ on WinCE PAC				No.	2-007-00	
Author	Eric_Shiu	Version	1.0.0	Date	2018/04/27	Page	6/6

## Part 2. Removing a shortcut on the desktop

To remove the shortcut(s) on the desktop and the programs menu, you need to delete the shortcut file created and the related information in "Autolnit.bat" file.

Step 1. Go to the location of the Shortcut file and delete it.



Step 2. Delete the item information from the Autolnit.bat file.

```
copy \System_Disk\Tools\RegistryViewer\RegView.lnk \Windows\AAæ
copy \System_Disk\Tools\RegistryViewer\RegView.lnk \Windows\IDò
copy \System_Disk\Tools\TaskMgr\TaskMgr.lnk \Windows\AAæ
copy \System_Disk\Tools\TaskMgr\TaskMgr.lnk \Windows\IDò
copy \System_Disk\Tools\SQLW35\sqlw35.lnk \Windows\AAæ
copy \System_Disk\Tools\SQLW35\sqlw35.lnk \Windows\IDò
copy \System_Disk\Tools\WCEP\v_remote.lnk \Windows\Desktop
copy \System_Disk\Tools\WCEP\v_remote.lnk \Windows\Programs
```

Path for the shortcut file.

Name of the shortcut file.

Copy the shortcut file to the Desktop folder and the Programs menu.

```
copy \System_Disk\Tools\RegistryViewer\RegView.lnk \Windows\AAæ
copy \System_Disk\Tools\RegistryViewer\RegView.lnk \Windows\IDò
copy \System_Disk\Tools\TaskMgr\TaskMgr.lnk \Windows\AAæ
copy \System_Disk\Tools\TaskMgr\TaskMgr.lnk \Windows\IDò
copy \System_Disk\Tools\SQLW35\sqlw35.lnk \Windows\AAæ
copy \System_Disk\Tools\SQLW35\sqlw35.lnk \Windows\IDò
```

Remove

Step 3. Save the file and reboot the device.