

Classification	System and Application FAQ on WinCE PAC				No.	1-009-03	
Author	Tunglu-Yu	Version	1.0.2	Date	2018/4/27	Page	1/5

How to change the display type for WinPAC when the display on the current monitor is out of range

Applies to:

Platform	OS Version	PAC Utility Version
WinPAC	All Versions	All Versions

The default display resolution of WinPAC is “800*600”. If the settings on your monitor are out of range, you are still able to change the display resolution and frequency with the VCEP – a remote control tool.

Here we illustrate how to connect the WinPAC via LAN.

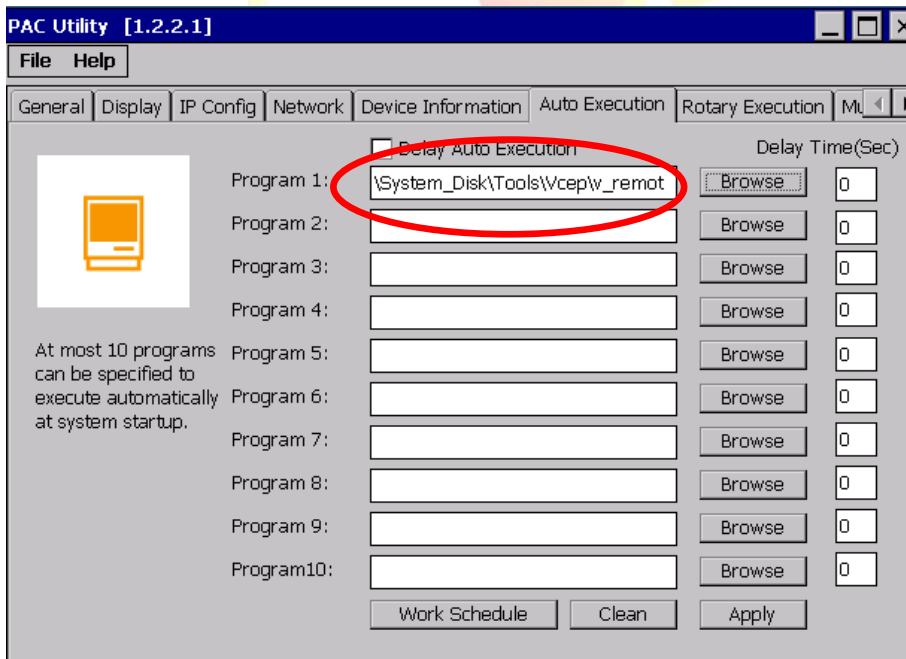
Step 1: Connect both the PC client and the WinPAC to a valid LAN.

Step 2: Install the VCEP client on your PC client.

The “vcep_4.2.0.7.exe” file is located at Companion

ftp://ftp.icpdas.com/pub/cd/winpac/napdos/wp-8x4x_ce50/pc_tools/vcep_4.2.0.7/

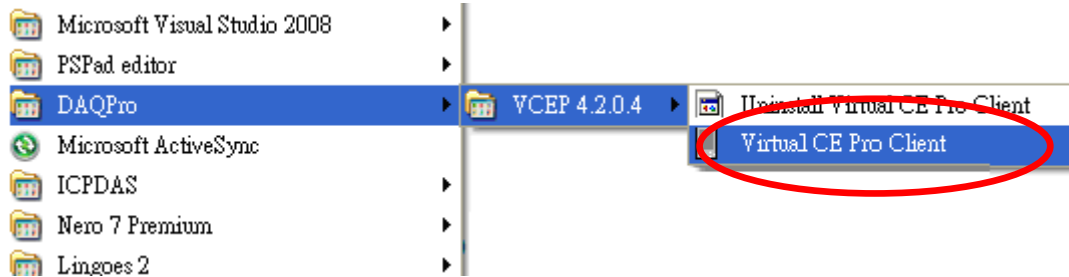
Step 3: Execute the Pac Utility. Set the \System_disk\tools\VCEP\v_remote.exe auto execution after reboot.



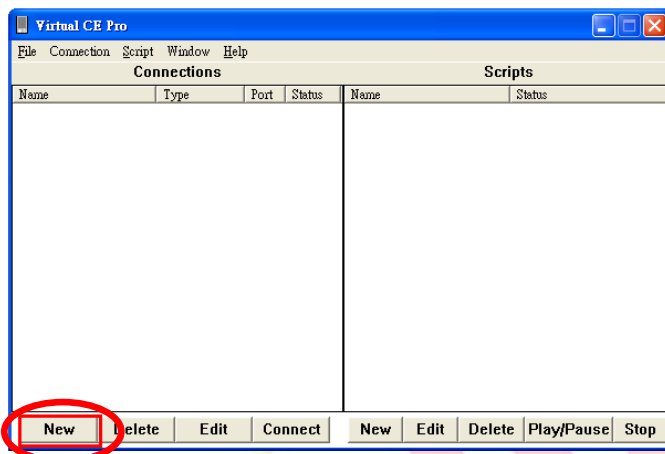
Classification	System and Application FAQ on WinCE PAC				No.	1-009-03	
Author	Tunglu-Yu	Version	1.0.2	Date	2018/4/27	Page	2/5

Step 4: Connect to the WinPAC with VCEP.

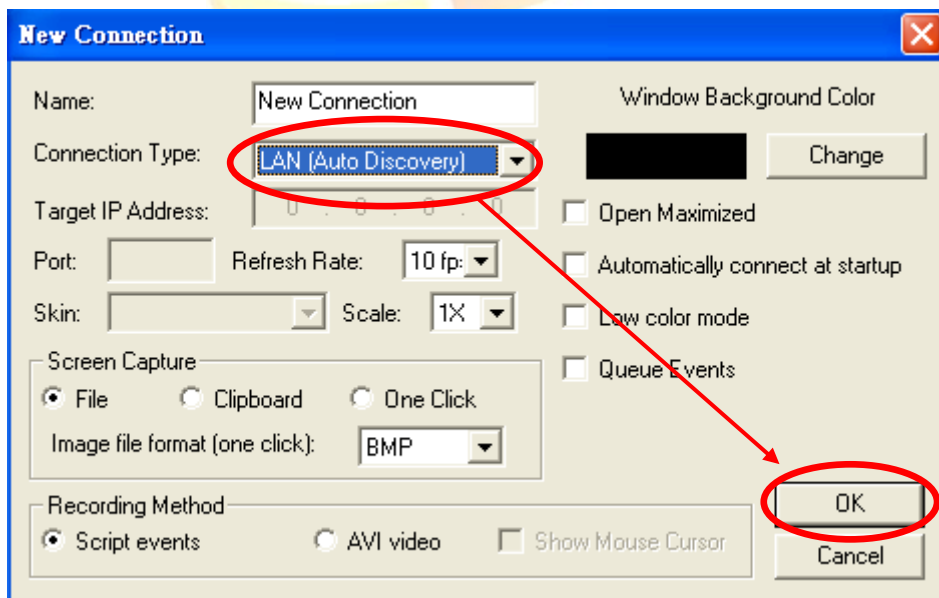
4.1. Execute the Virtual CE Pro Client on host PC.



4.2. Click the “New” button to add a new connection.

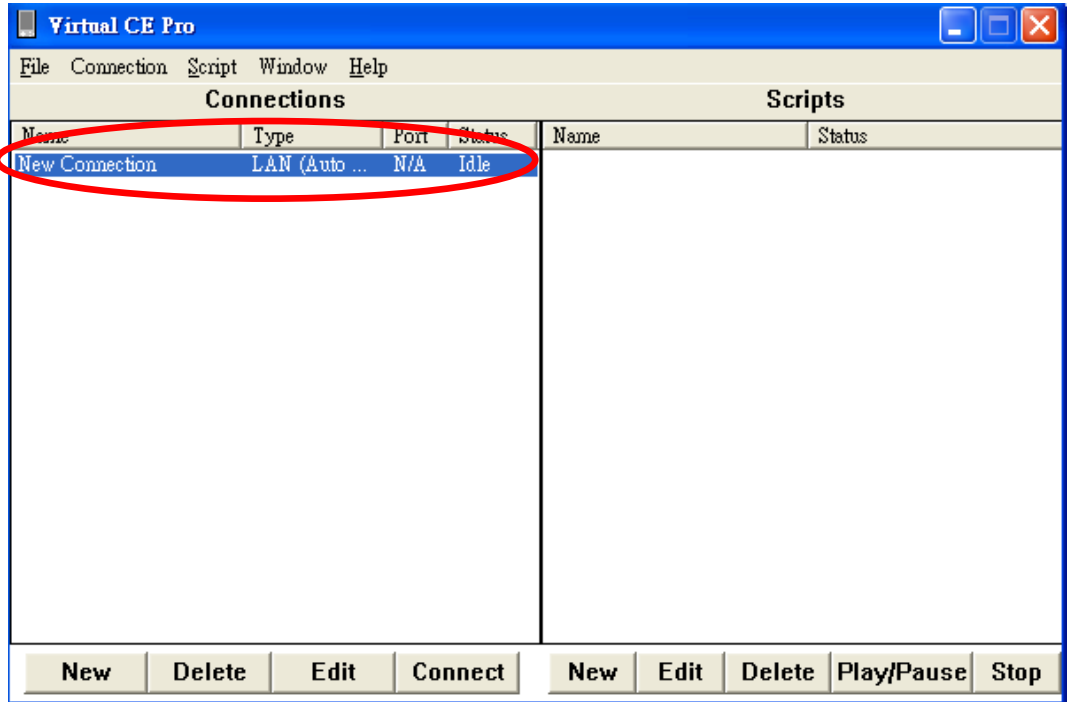


4.3. Choose the “LAN (Auto Discovery)” item from the “Connection Type” comboBox and click the “OK” button.



Classification	System and Application FAQ on WinCE PAC				No.	1-009-03	
Author	Tunglu-Yu	Version	1.0.2	Date	2018/4/27	Page	3/5

4.4. Double click the “**New connection**” item, the VCEP client program starts to scan the servers on the LAN.



4.5. Double click the item of target device (server).

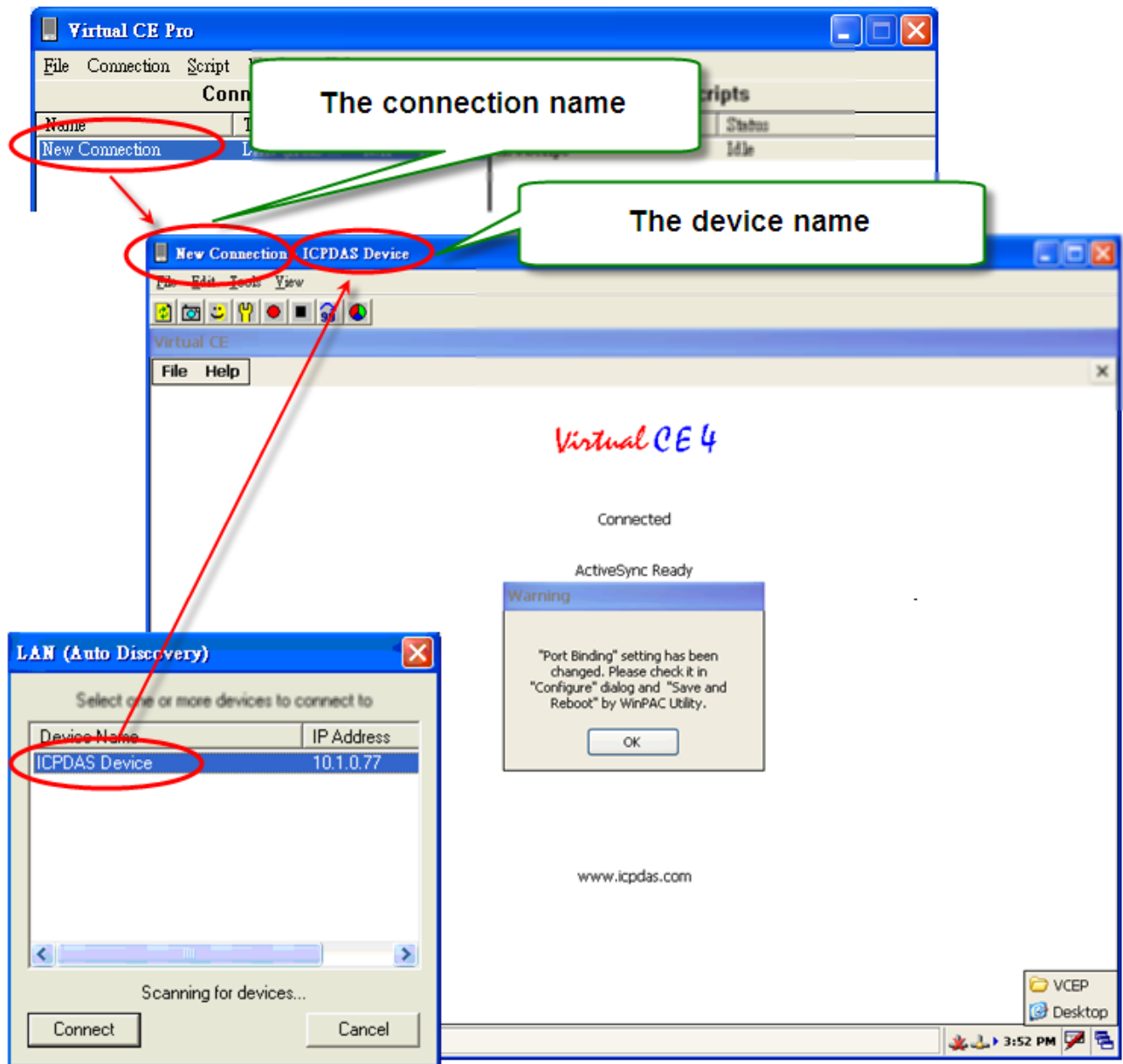
The PAC which is running the v_remote.exe will be searched and added to the device list.

For example, the server is listed with Device Name “ICPDAS Device” and IP Address “10.1.0.77”.



Classification	System and Application FAQ on WinCE PAC				No.	1-009-03	
Author	Tunglu-Yu	Version	1.0.2	Date	2018/4/27	Page	4/5

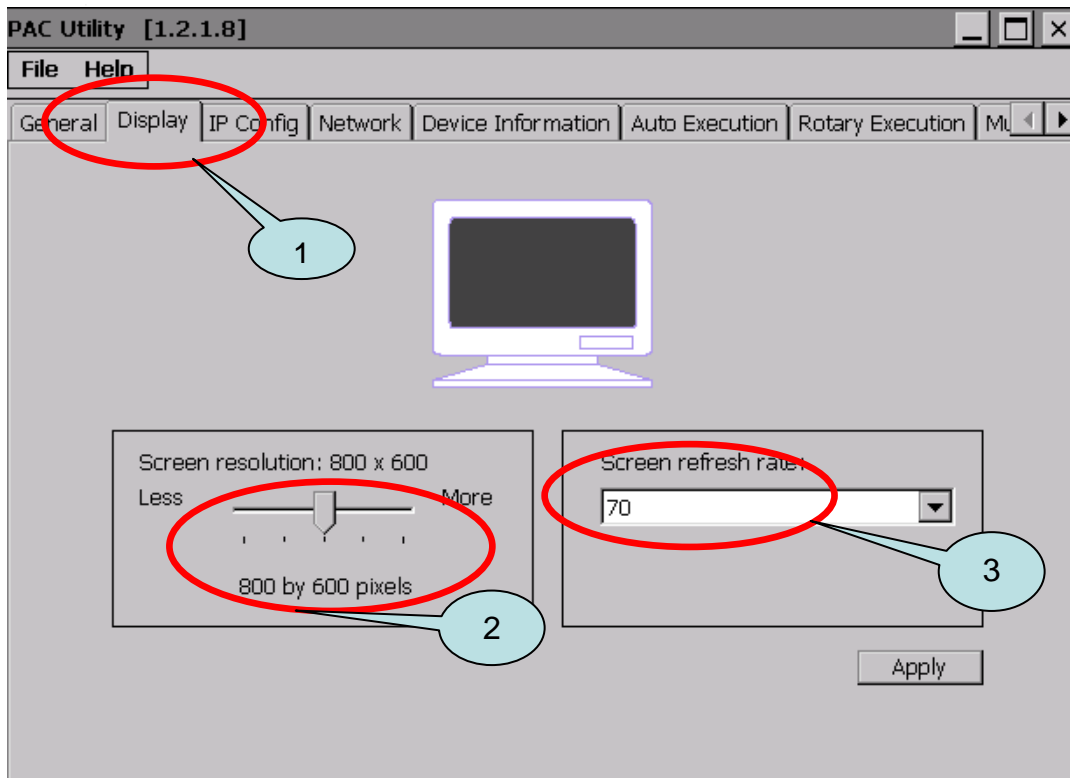
The desktop of the remote PAC will be displayed on the Host PC as below.



Classification	System and Application FAQ on WinCE PAC				No.	1-009-03	
Author	Tunglu-Yu	Version	1.0.2	Date	2018/4/27	Page	5/5

Step5: Change the display resolution.

5.1. Start the PAC Utility on the desktop, select the display resolution and frequency you want then press the **“Apply”** button.



Step 6: Reboot your WinPAC.

6.1. Click the **“File”** → **“Reboot”** menu option.

6.2. Click the **“Yes”** button and wait for the device to reboot.

