

Classification	WinPAC Development FAQ				No.	5-014-00	
Author	Tunglu-Yu	Version	1.0.0	Date	2018/03/23	Page	1/5

How to use the SMS function and get the GPS data

Applies to:

Platform	OS version	WinPAC/ViewPAC utility version
WP-8x2x	All versions	Do not matter with the utility.
WP-9x2x		
WP-523x		
WP-224x		
VP-x231		
VP-x201		

The 3G/4G modem allows the user to use the SMS function and get the GPS data. To use the SMS function and get the GPS data, perform the following steps:

Note: Before installing the SIM card, please cancel the PIN lock function of SIM card; otherwise you will not be able to use the SMS function.

Demo program locate at:

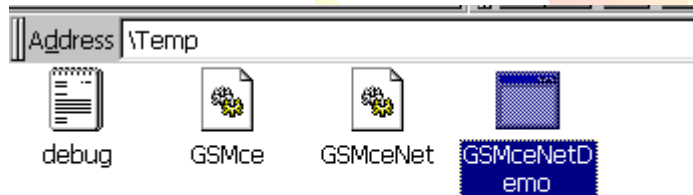
http://ftp.icpdas.com/pub/cd/winpac_am335x/wp-5231/demo/3g_modem/3g_modem_sms_demo/

Demo program API manual locate at:

http://ftp.icpdas.com/pub/cd/winpac_am335x/wp-5231/demo/3g_modem/3g_modem_sms_demo/gsm_lib_manual_v1.0.1.pdf

How to use the SMS function

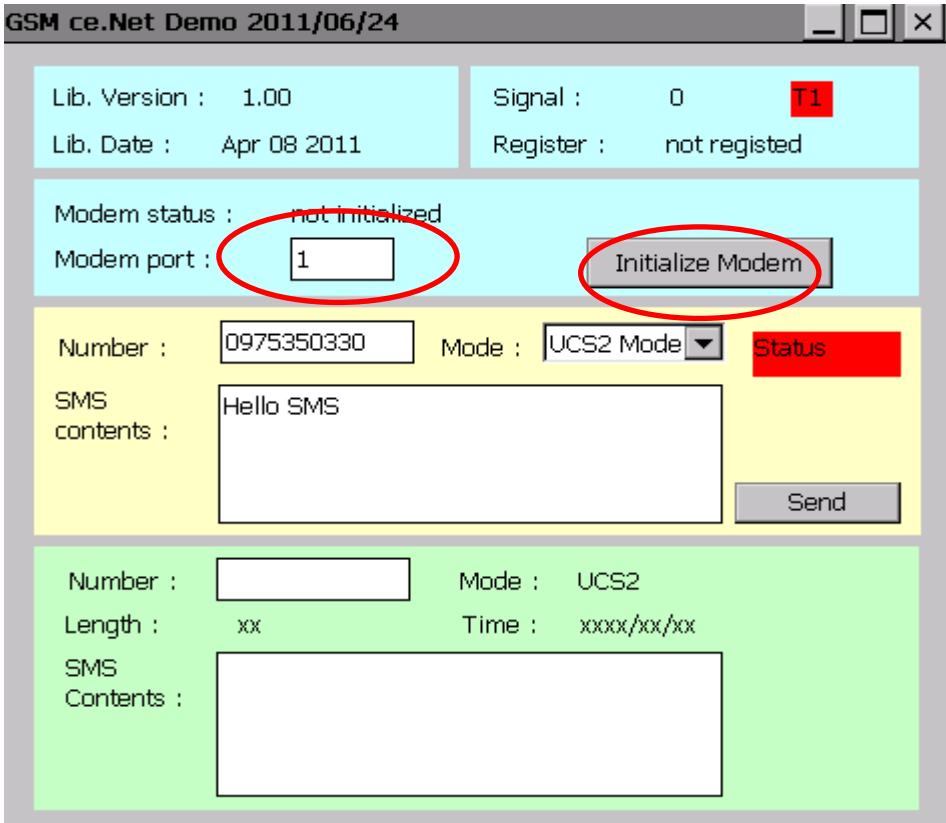
Step 1: Copy the GSMceNetDemo.exe、GSMceNet.dll、GSMce.dll to the WinPAC and then execute GSMceNetDemo.exe



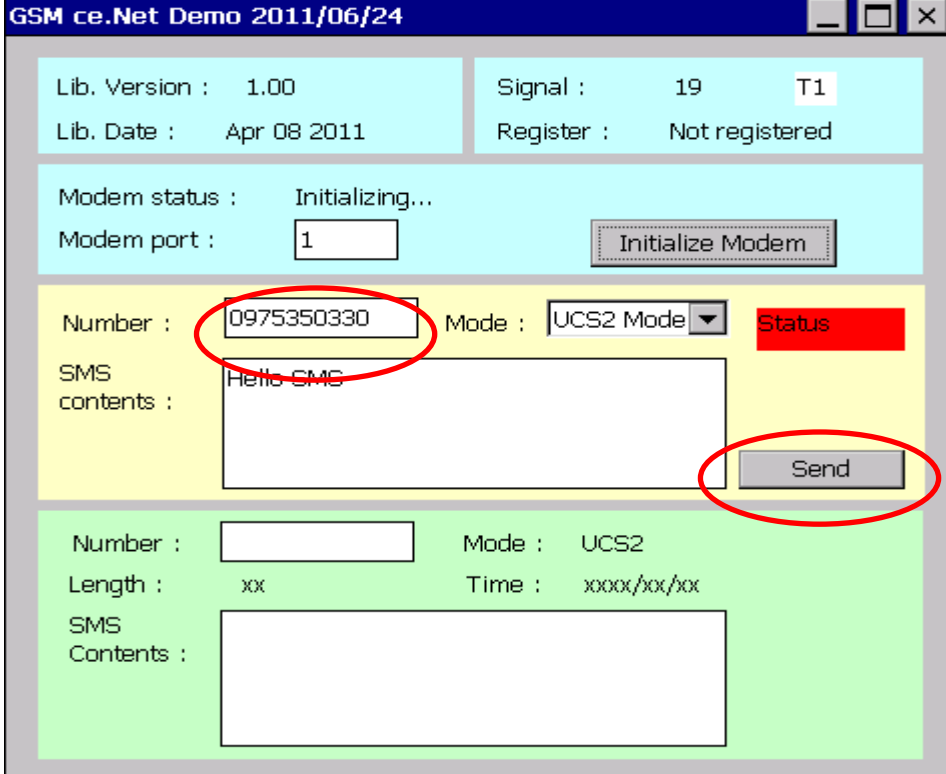
Step 2: Select the COM port to SMS message, and then click the "Initialize Modem" button.

Note: The "COM port" has COM1、COM8、COM9, but the COM9 usually used by GPRS network. At the same time, if the COM8 to be an SMS function, the GPRS network connection will have error happen. So, we suggested you to using the COM1.

Classification	WinPAC Development FAQ				No.	5-014-00	
Author	Tunglu-Yu	Version	1.0.0	Date	2018/03/23	Page	2/5



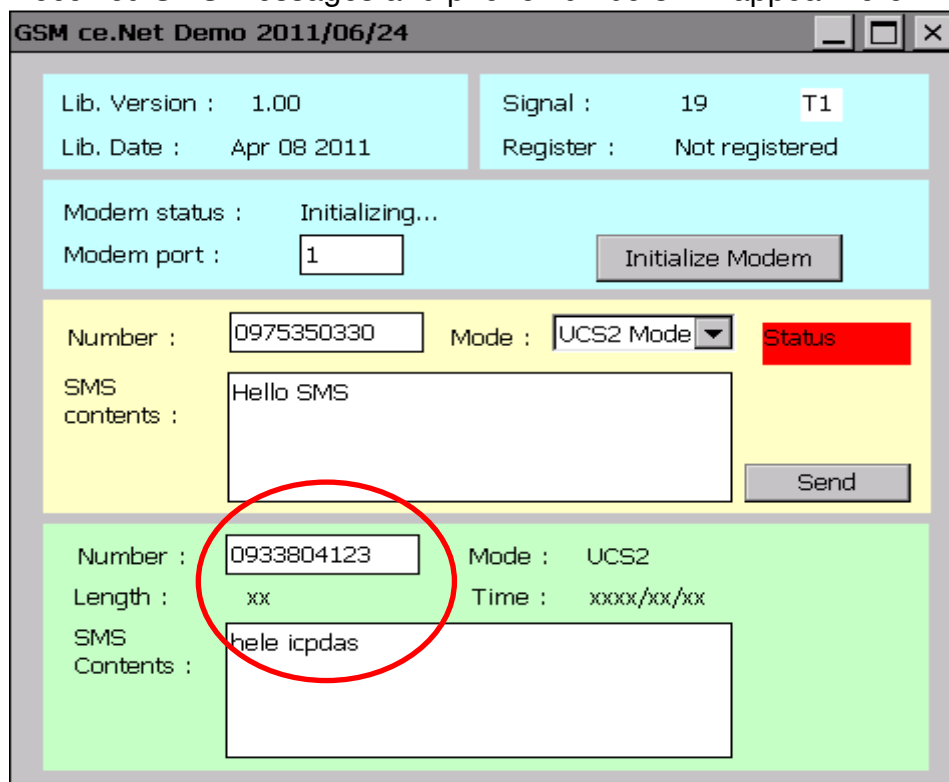
Step 3: Send the SMS message:
 Enter the phone number and the message in the SMS contents, click the “Send” button.



Classification	WinPAC Development FAQ				No.	5-014-00	
Author	Tunglu-Yu	Version	1.0.0	Date	2018/03/23	Page	3/5

Receive the SMS message:

Received SMS messages and phone numbers will appear here.



Note : The COM1,COM8,COM9 both can use to send the SMS message.
The default "COM port"(URC port) to receive the SMS message is COM8.

Use the AT command: AT+QURCCFG?
To check the URC port now.

Use the AT command to change the URC port

To COM1:

AT+QURCCFG="urcport","uart1"\r

To COM8:

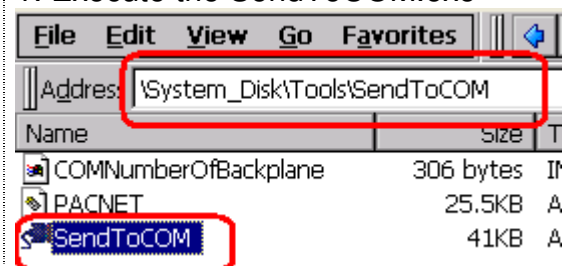
AT+QURCCFG="urcport","usbar"\r

To COM9:

AT+QURCCFG="urcport","usbmodem"\r

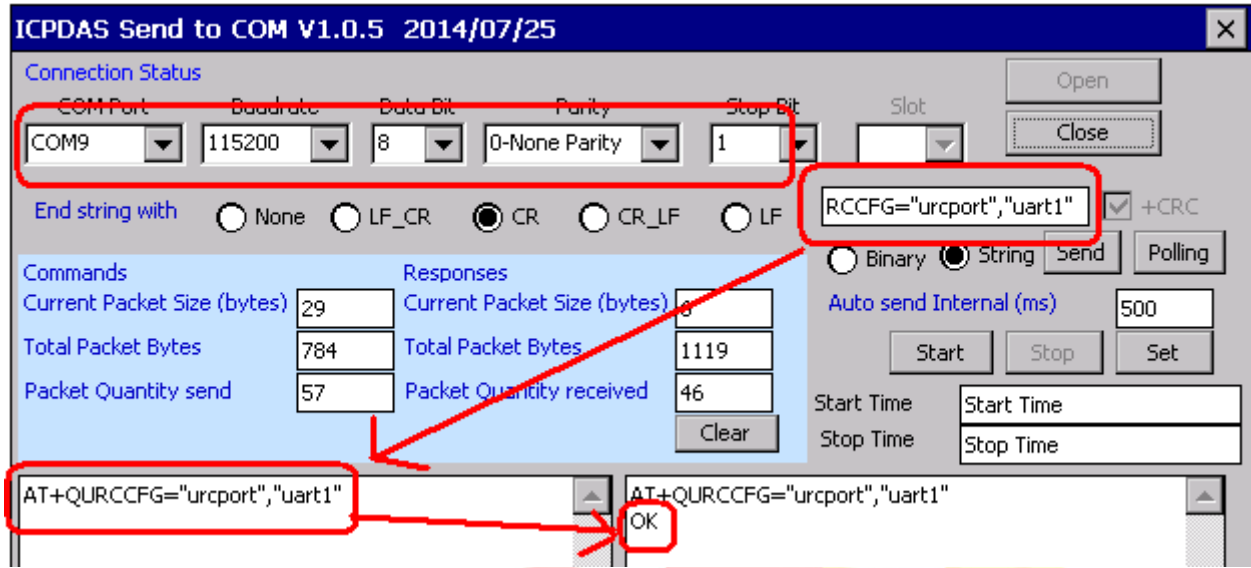
e.g.: Use the SendToCom.exe to [change the URC port to COM1](#)

1. Execute the SendToCOM.exe



Classification	WinPAC Development FAQ				No.	5-014-00	
Author	Tunglu-Yu	Version	1.0.0	Date	2018/03/23	Page	4/5

2. Enter the AT command: AT+QURCCFG="urcport","uart1" and then send the AT command out after open COM9.



Receive the GPS data

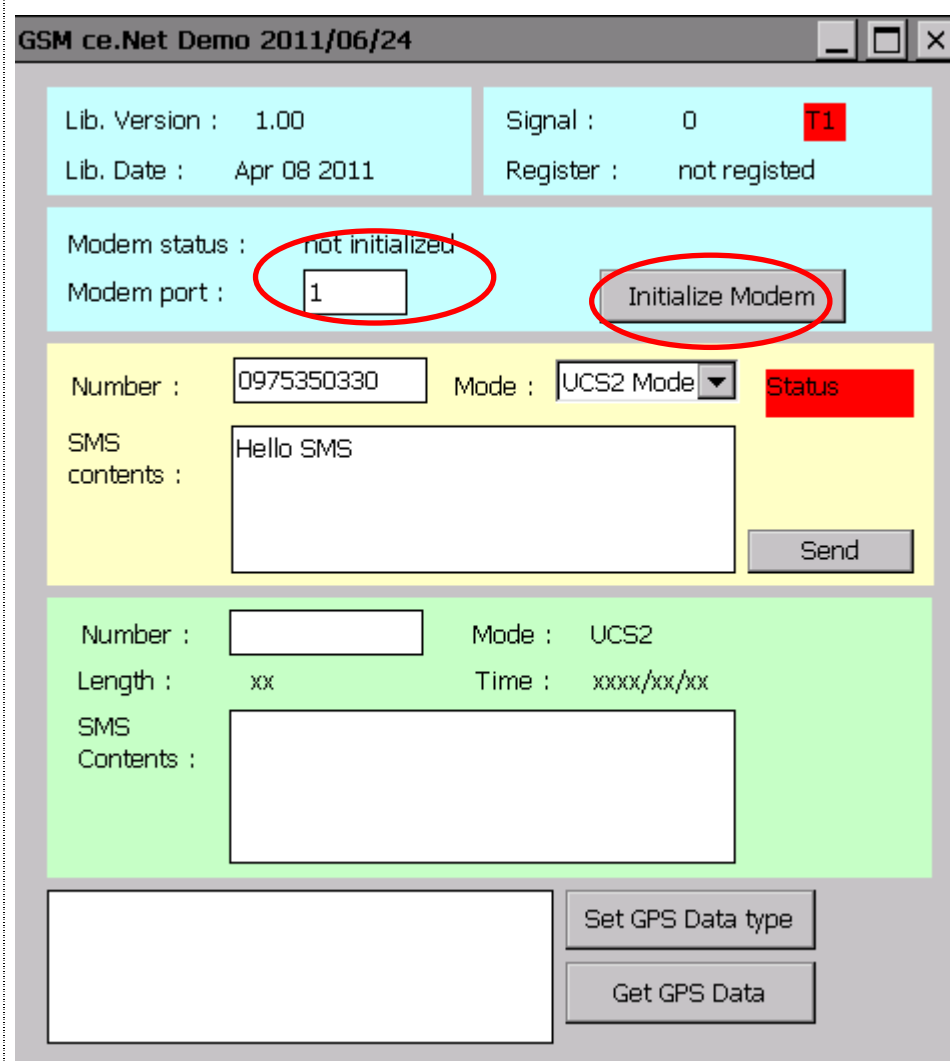
Step 1: Execute the GSMceNetDemo.exe



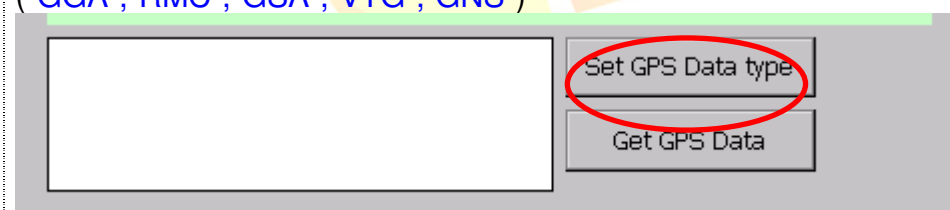
Step 2: Select the COM port to receive the GPS data and SMS message, and then click the "Initialize Modem" button.

Note: The "COM port" has COM1、COM8、COM9, but the COM9 usually used by GPRS network. At the same time, if the COM8 to be an SMS function and receive GPS data, the GPRS network connection will have error happen. So, we suggested you to using the COM1.

Classification	WinPAC Development FAQ				No.	5-014-00	
Author	Tunglu-Yu	Version	1.0.0	Date	2018/03/23	Page	5/5



Step 3: Click the “Set GPS Data type” button to select the GPS data type that will be received. (“GGA”, “RMC”, “GSA”, “VTG”, “GNS”)



Step 3: Click the “Get GPS Data” , show the GPS data now.

