

Packing List

In addition to this guide, the package includes the following items:



WP-5231-CE7



Wire Terminal * 16



microSD Card and
microSD to SD Adapter



Screw Driver

Technical Support

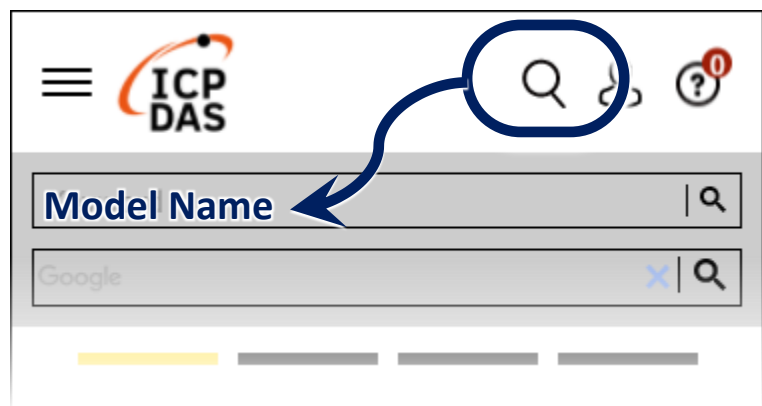
service@icpdas.com

www.icpdas.com

Resources

How to search for drivers, manuals and spec information on ICP DAS website.

- For Mobile Web

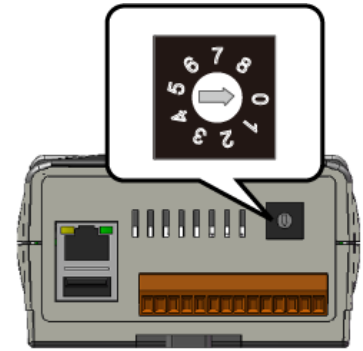


- For Desktop Web



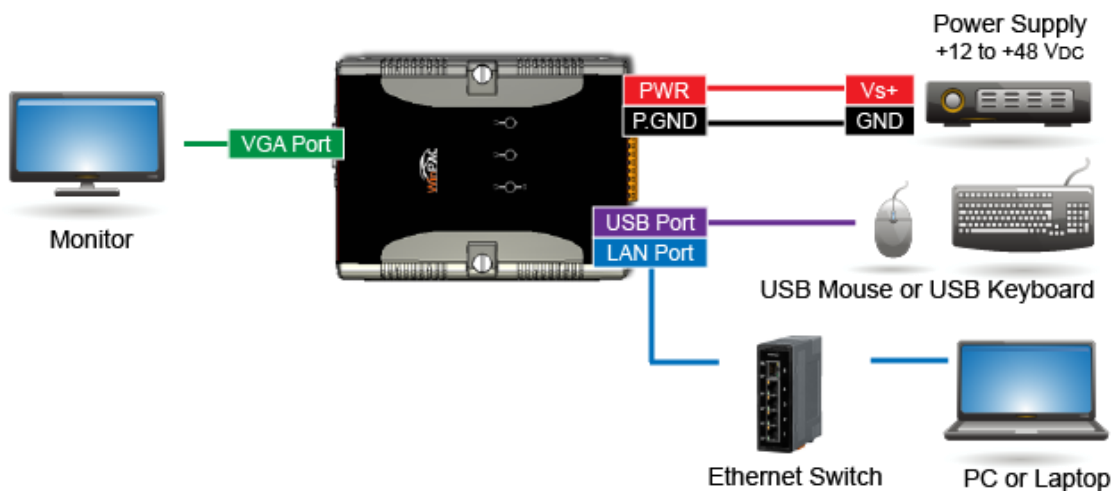
1 Configuring the Boot Mode

Before starting any installation, be sure that the switch is placed in the 『0』 position.



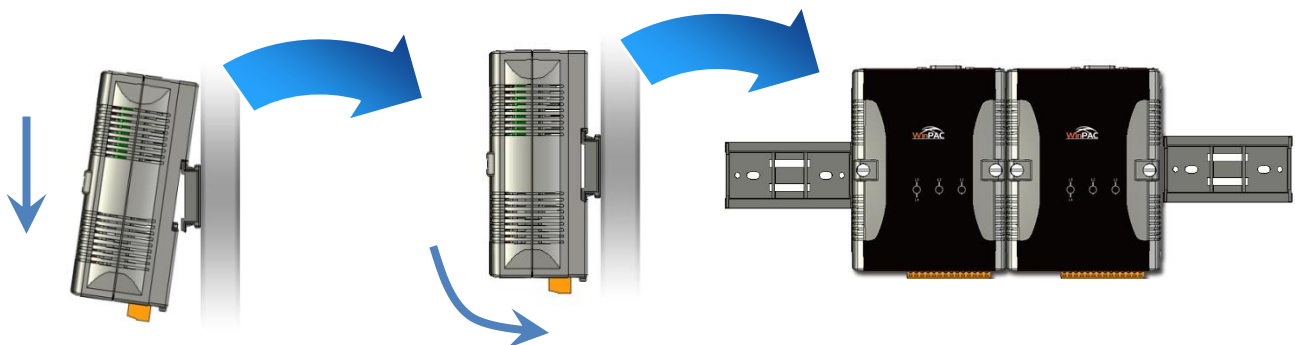
2 Connecting to PC, Monitor and Power Supply

- 1) Connect the mouse or keyboard to the USB port.
- 2) Connect PC to the Ethernet port through an Ethernet switch.
- 3) Connect the power supply (+12 to +48 VDC) to PWR and P.GND terminals.
- 4) Connect the monitor to the VGA port.



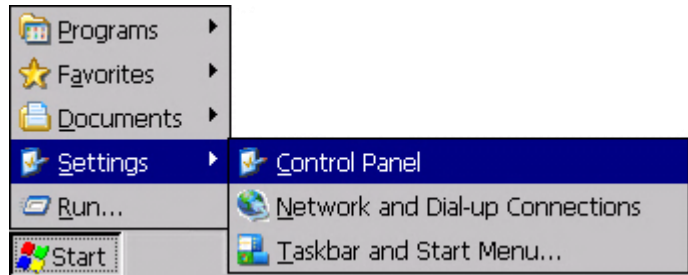
3 Mounting the WP-5231-CE7

The WP-5231-CE7 has simple rail clips for mounting reliably on a standard 35 mm DIN rail.

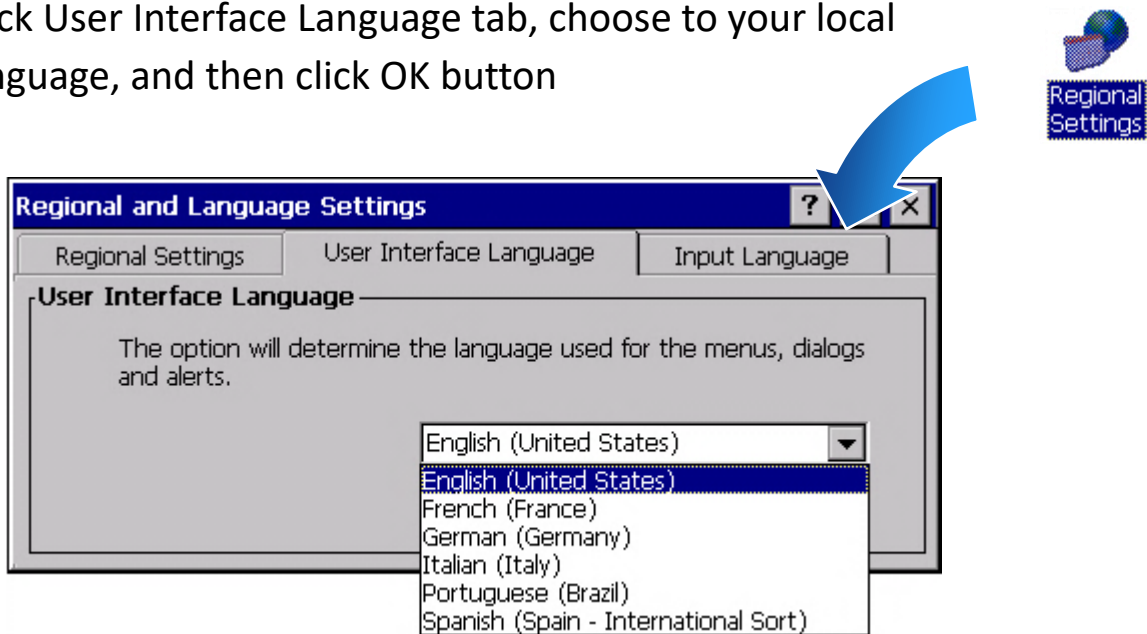


4 Changing the User Interface Language

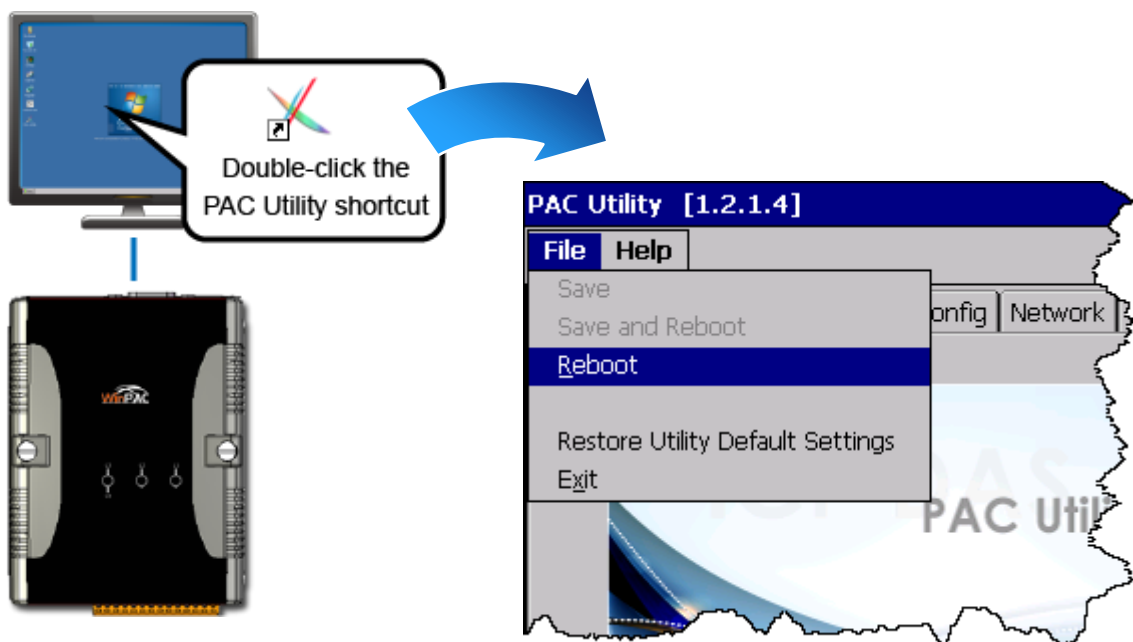
- 1) Click Start menu, point to Settings, click Control Panel, and then click Regional Settings



- 2) Click User Interface Language tab, choose to your local language, and then click OK button

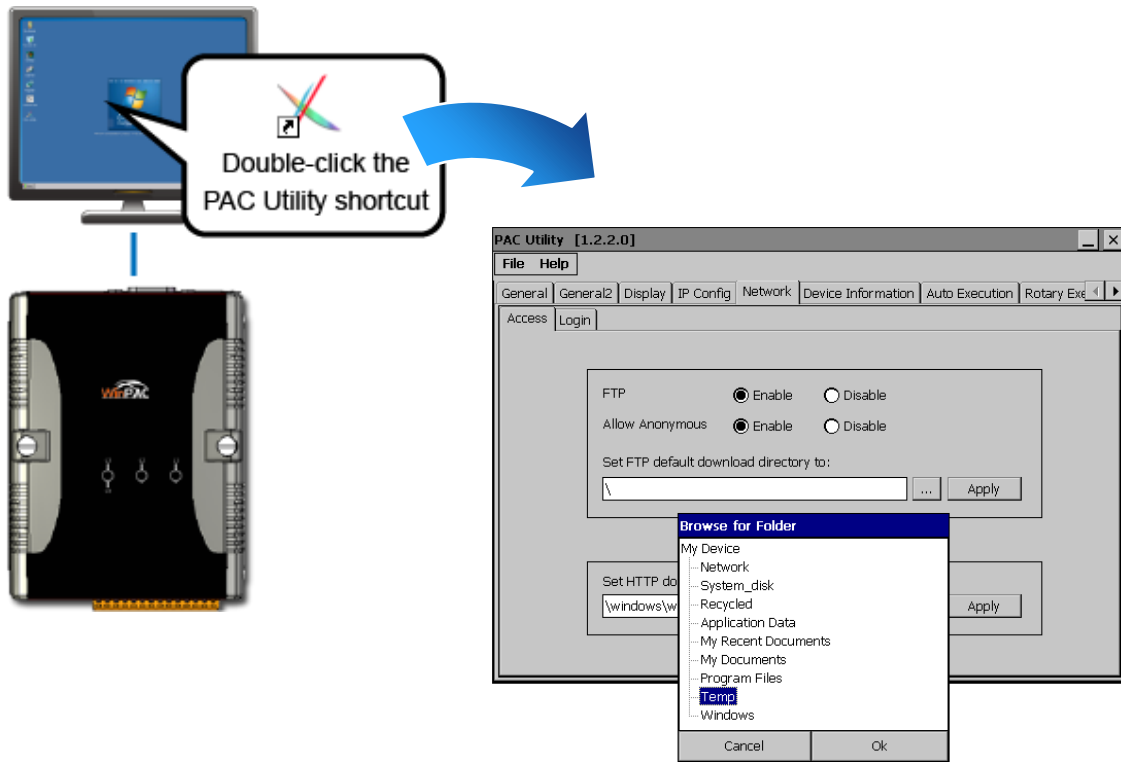


- 3) Double-click the PAC Utility on the desktop, and then reboot the WP-5231-CE7 for changes to take effect



5 Using PAC Utility to Manage the WP-5231-CE7

- 1) Double-click the PAC Utility on the desktop
- 2) Configure IP address (DHCP), FTP Server, Auto Execution files..., etc



- 3) Reboot the WP-5231-CE7

