

Classification	System and Application FAQ on WinCE PAC				No.	4-004-00	
Author	Vic-Tsai	Version	1.0.1	Date	2013/05/16	Page	1/3

How to clear the device name listed on Eshell

Applies to:

<i>Platform</i>	<i>OS version</i>	<i>WinPAC/ViewPAC utility version</i>
<i>WP-8x3x/ XP-8x4x</i>	<i>All versions</i>	<i>All versions</i>
<i>WP-5000</i>	<i>All versions</i>	<i>All versions</i>
<i>VP-23W1/ VP-25W1</i>	<i>All versions</i>	<i>All versions</i>
<i>VP-4131</i>	<i>All versions</i>	<i>All versions</i>

Every time when Eshell searches a device, the device name will be added to a list without clearing. Therefore the list will be longer and longer (See “Diagram-1”) and become difficult to recognize which one is the right choice.

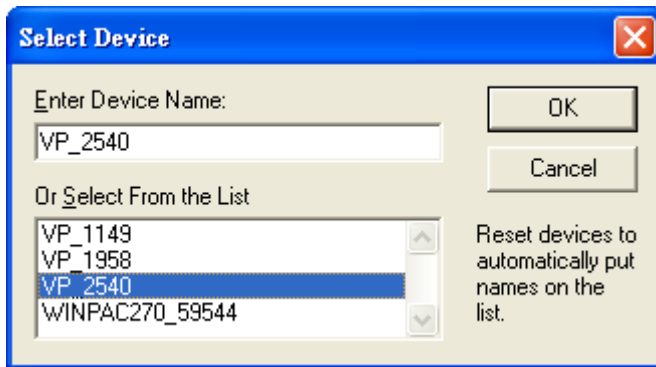


Diagram-1

The following is the solution:

Step 1: Copy “Eshell” folder to PC.

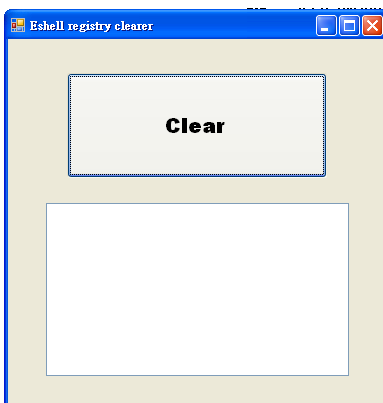
(There will be two files in it. One is ESHELL.EXE and another is registry_clear.exe)

Download path:

CD:\napdos\wp-8x4x_ce50\PC_Tools\Eshell

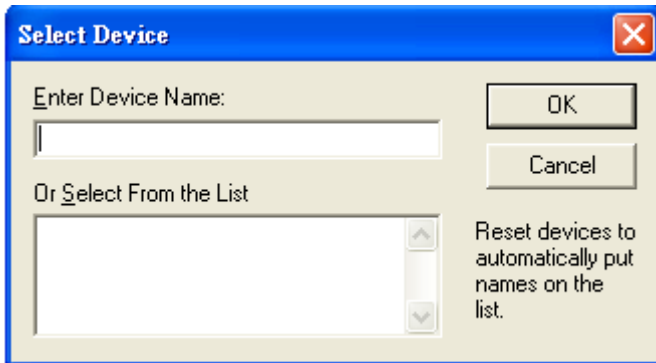
http://ftp.icpdas.com/pub/cd/winpac/napdos/wp-8x4x_ce50/pc_tools/Eshell)

Step 2: Execute registry_clear.exe and click “Clear” button



Classification	System and Application FAQ on WinCE PAC				No.	4-004-00	
Author	Vic-Tsai	Version	1.0.1	Date	2013/05/16	Page	2/3

Step 3: After clearing device name, the Eshell windows shows to search device.



Classification	System and Application FAQ on WinCE PAC				No.	4-004-00	
Author	Vic-Tsai	Version	1.0.1	Date	2013/05/16	Page	3/3

Revision History

Revision	Date	Description
1.0.1	2013/05/16	NEW: Added support information for WP-5000 and VP-4131.
1.0.0	2010/02/12	Initial release