

Classification	System and Application FAQ on WinCE PAC				No.	4-002-00	
Author	Tunglu-Yu	Version	1.0.1	Date	2013/05/16	Page	1/15

How to reinstall the boot loader using a download cable

Applies to:

Platform	OS version	WinPAC/ViewPAC utility version
WP-8x3x	All versions	All versions
WP-8x4x	All versions	All versions
VP-25W1	All versions	All versions
VP-23W1	All versions	All versions
VP-4131	All versions	All versions

If the WinPAC/ViewPAC unable to be booted and the OS cannot be updated using the EShell, the boot loader may be damaged or lost. In this case you have to use the download cable to re-install the boot loader. When the boot loader is correcting installed, the EShell will be able to communicate with the boot loader to update the OS through the Ethernet.

To update the boot loader using a download cable, perform the following steps:

Step 1: Download the "Update_Eboot_Tool" folder from CD: \napdos\wp-8x4x_ce50\pc_tools\ or ftp://ftp.icpdas.com.tw/pub/cd/winpac/napdos/wp-8x4x_ce50/pc_tools/ and install the latest version of the boot loader to the "Update_Eboot_Tool" folder.

Tips & Warnings



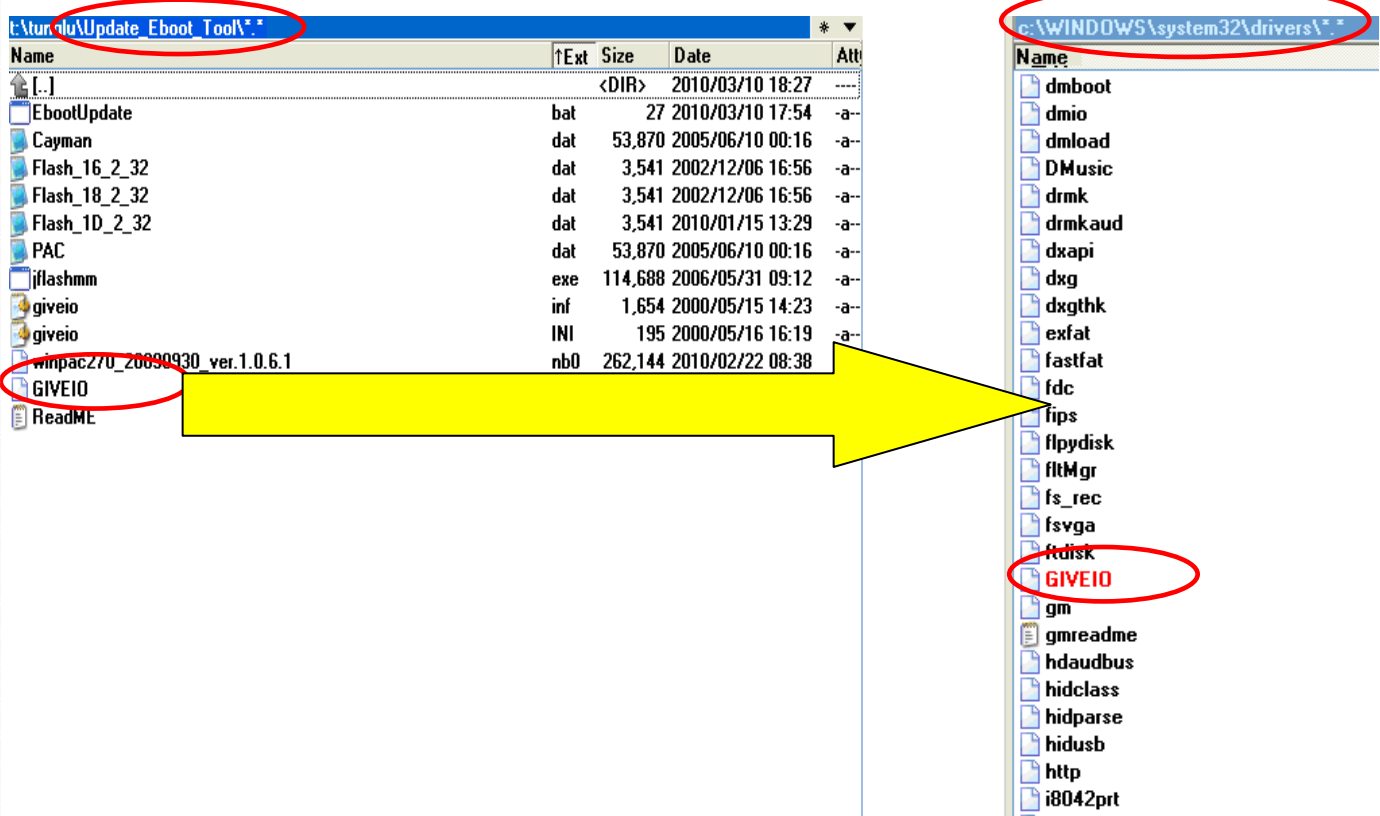
The location of latest version of boot loader for different devices is:

1. WP-8x4x is in CD:\napdos\wp-8x4x_ce50\os_image\eboot\ or ftp://ftp.icpdas.com.tw/pub/cd/winpac/napdos/wp-8x4x_ce50/os_image/eboot/
2. WP-8x3x is in CD:\napdos\wp-8x3x_ce50\os_image\eboot\ or ["ftp://ftp.icpdas.com.tw/pub/cd/winpac/napdos/wp-8x3x_ce50/os_image/eboot/"](ftp://ftp.icpdas.com.tw/pub/cd/winpac/napdos/wp-8x3x_ce50/os_image/eboot/)
3. VP-25W1 is in CD:\napdos\vp-2000_ce50\os_image\vp-25w1\eboot\ or ["ftp://ftp.icpdas.com.tw/pub/cd/winpac/napdos/vp-2000_ce50/os_image/vp-25w1/eboot/"](ftp://ftp.icpdas.com.tw/pub/cd/winpac/napdos/vp-2000_ce50/os_image/vp-25w1/eboot/)
4. VP-23W1 is in CD:\napdos\vp-2000_ce50\os_image\vp-23w1\eboot\ or ["ftp://ftp.icpdas.com.tw/pub/cd/winpac/napdos/vp-2000_ce50/os_image/vp-23w1/eboot/"](ftp://ftp.icpdas.com.tw/pub/cd/winpac/napdos/vp-2000_ce50/os_image/vp-23w1/eboot/)
5. VP-4131 is in CD:\napdos\vp-4000_ce50\os_image\vp-413x\eboot\ or ["ftp://ftp.icpdas.com.tw/pub/cd/winpac/napdos/vp-4000_ce50/os_image/vp-413x/eboot/"](ftp://ftp.icpdas.com.tw/pub/cd/winpac/napdos/vp-4000_ce50/os_image/vp-413x/eboot/)

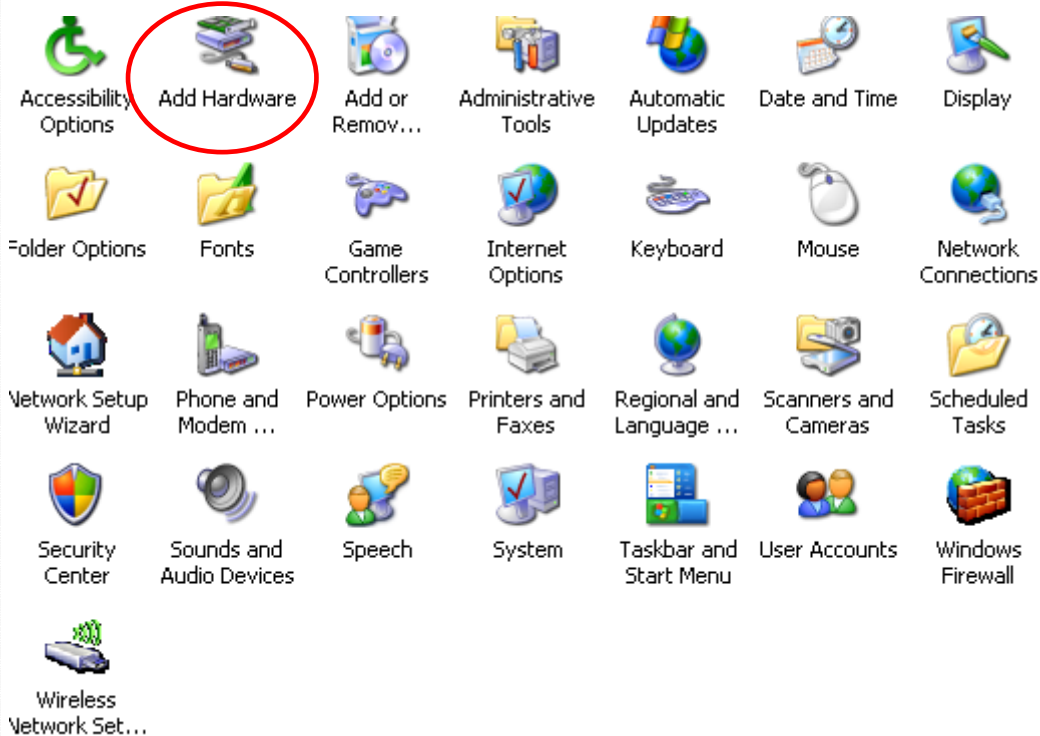
Classification	System and Application FAQ on WinCE PAC				No.	4-002-00	
Author	Tunglu-Yu	Version	1.0.1	Date	2013/05/16	Page	2/15

Step 2: Install “Giveio”.

Copy the “Giveio.sys” file from the “Update_Eboot_Tool” folder to the “c:\windows\system32\drivers” folder.

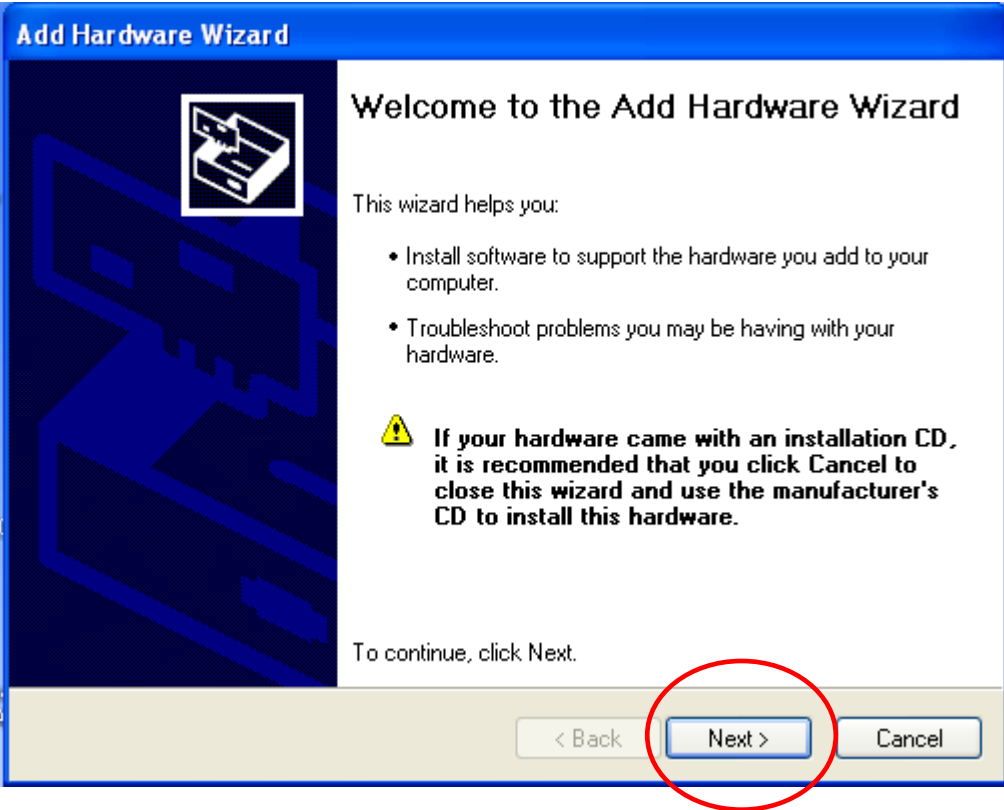


Step 3: Go to the Control panel and click the “Add Hardware” icon.

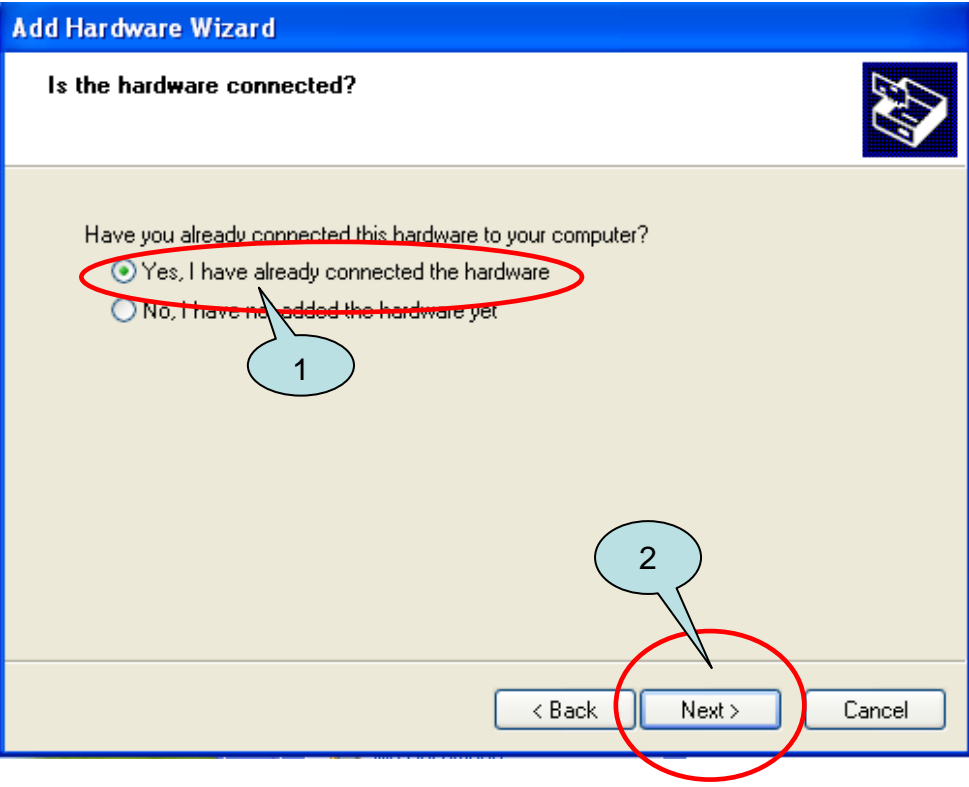


Classification	System and Application FAQ on WinCE PAC				No.	4-002-00	
Author	Tunglu-Yu	Version	1.0.1	Date	2013/05/16	Page	3/15

Step 4:

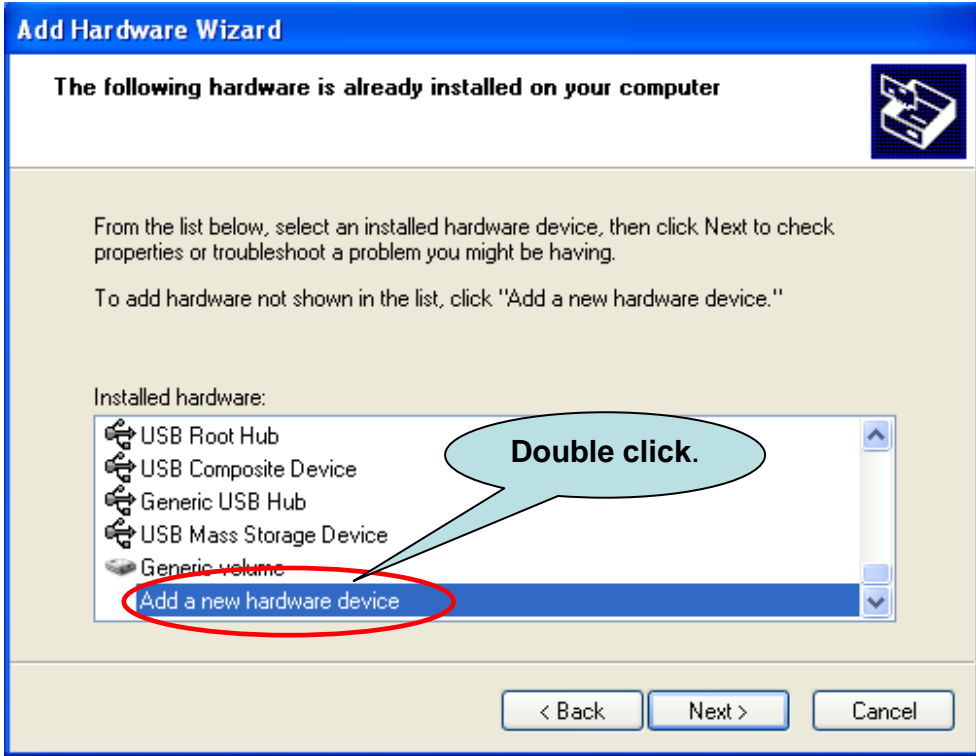


Step 5:

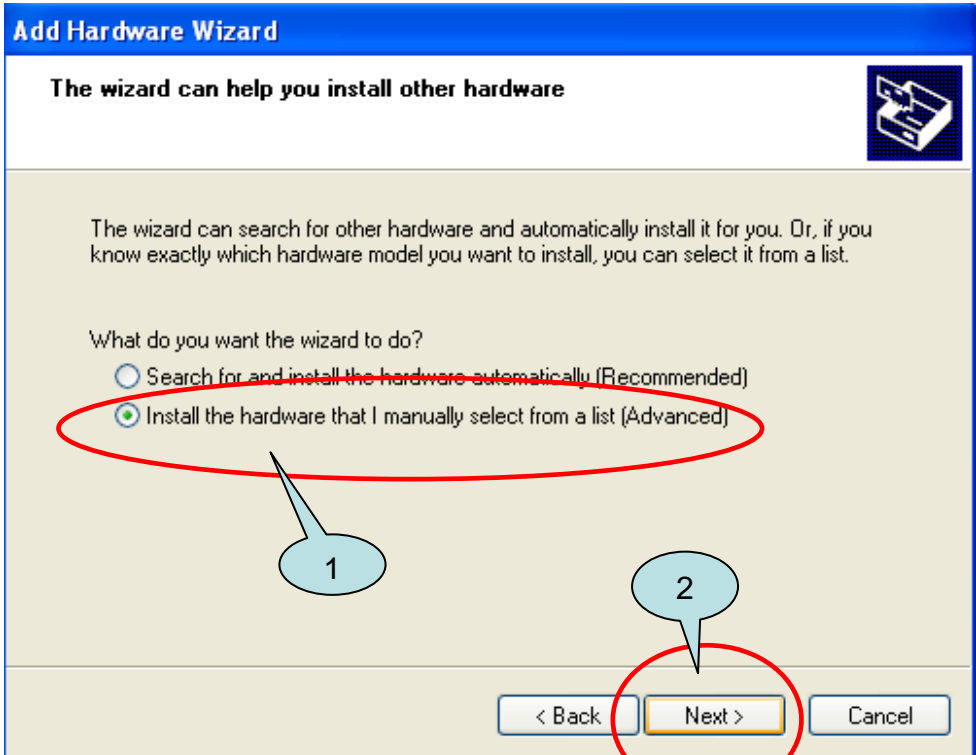


Classification	System and Application FAQ on WinCE PAC				No.	4-002-00	
Author	Tunglu-Yu	Version	1.0.1	Date	2013/05/16	Page	4/15

Step 6:

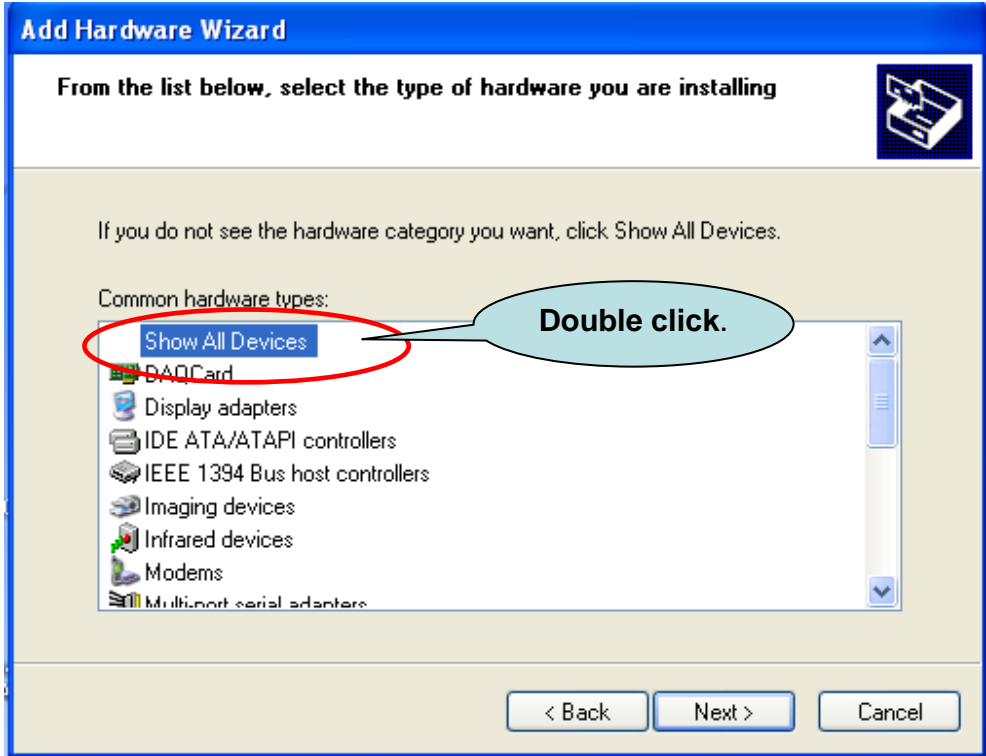


Step 7:

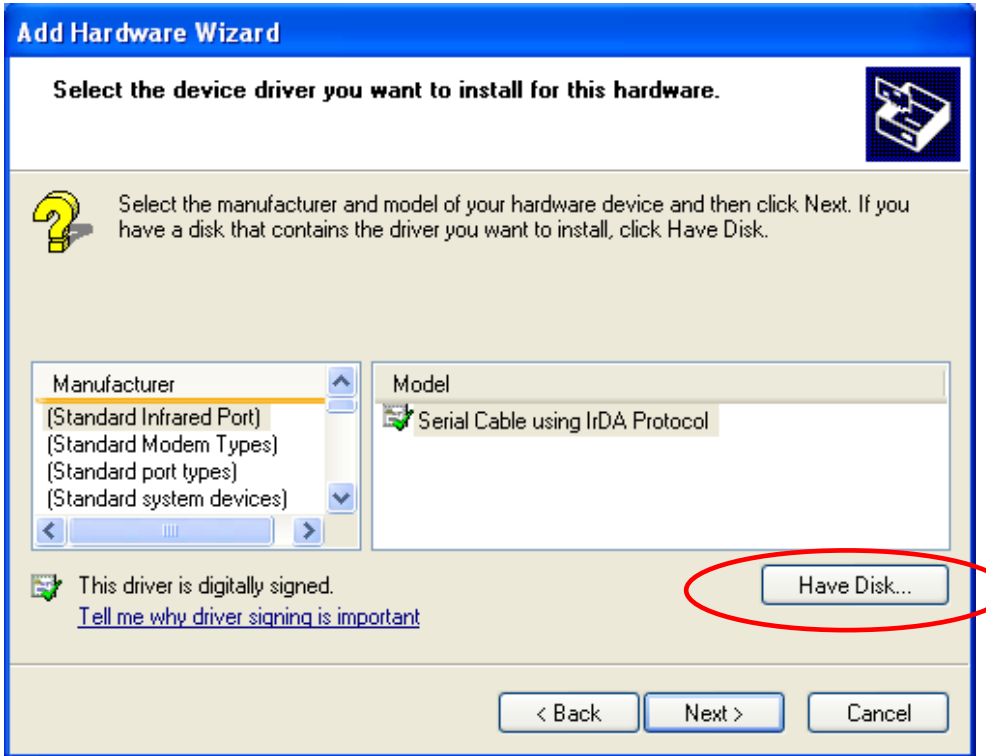


Classification	System and Application FAQ on WinCE PAC				No.	4-002-00	
Author	Tunglu-Yu	Version	1.0.1	Date	2013/05/16	Page	5/15

Step 8:

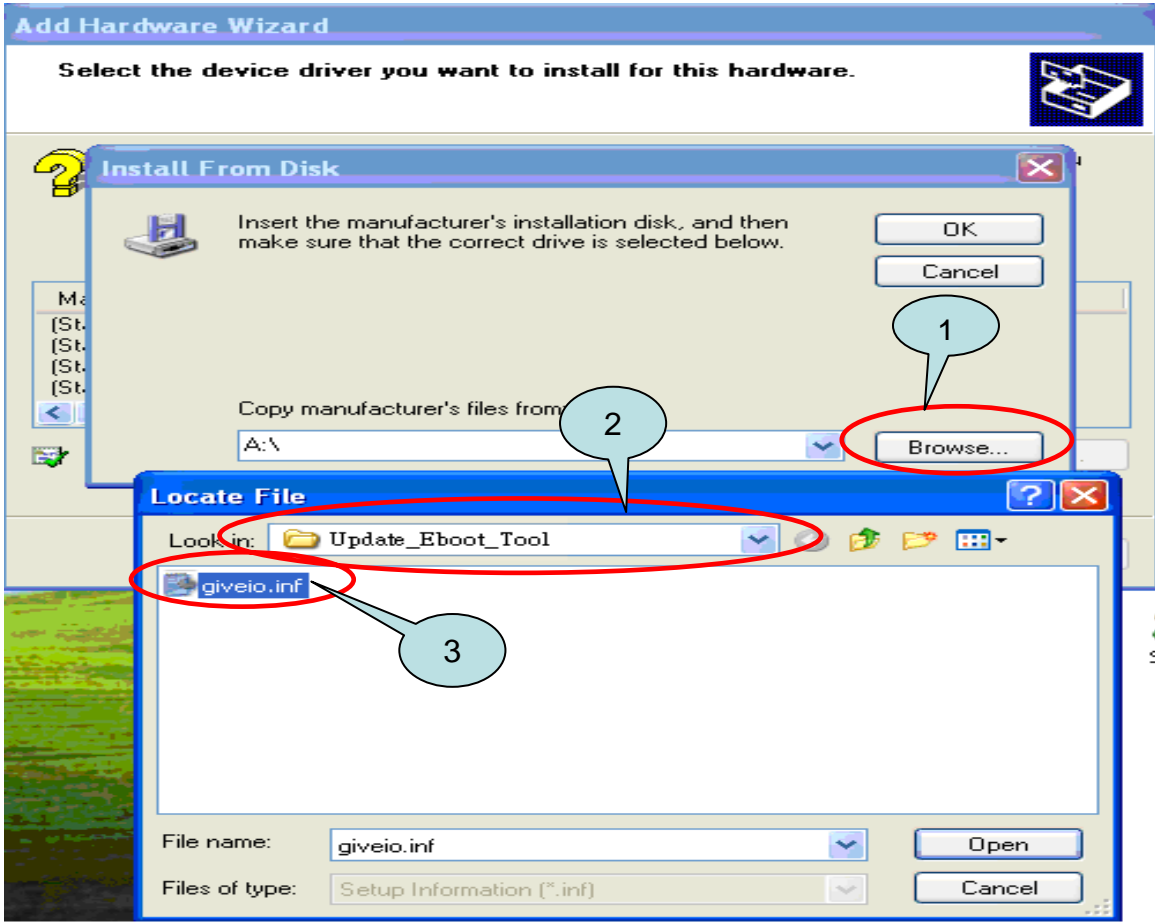


Step 9:

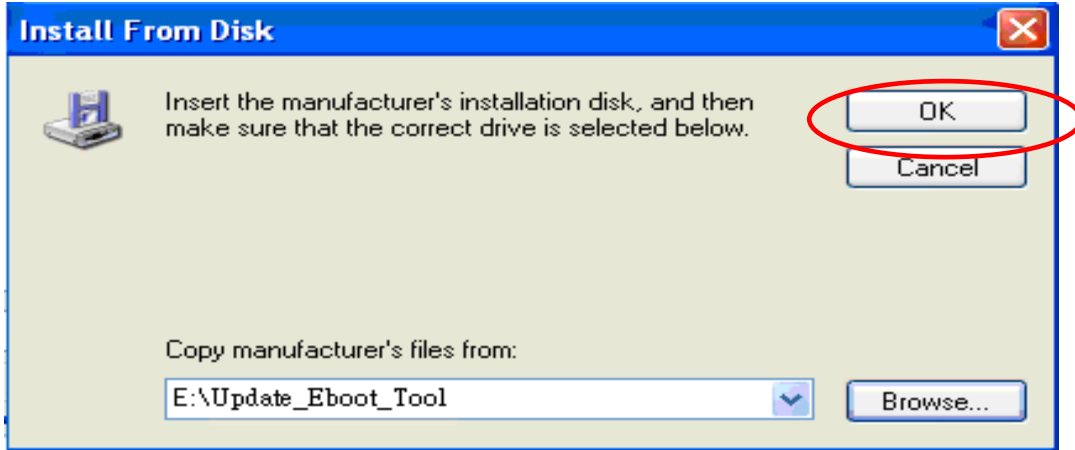


Classification	System and Application FAQ on WinCE PAC				No.	4-002-00	
Author	Tunglu-Yu	Version	1.0.1	Date	2013/05/16	Page	6/15

9.1: Click the “Browse” button and locate the “Update_Eboot_Tool” folder and then select the “giveio.inf” file.

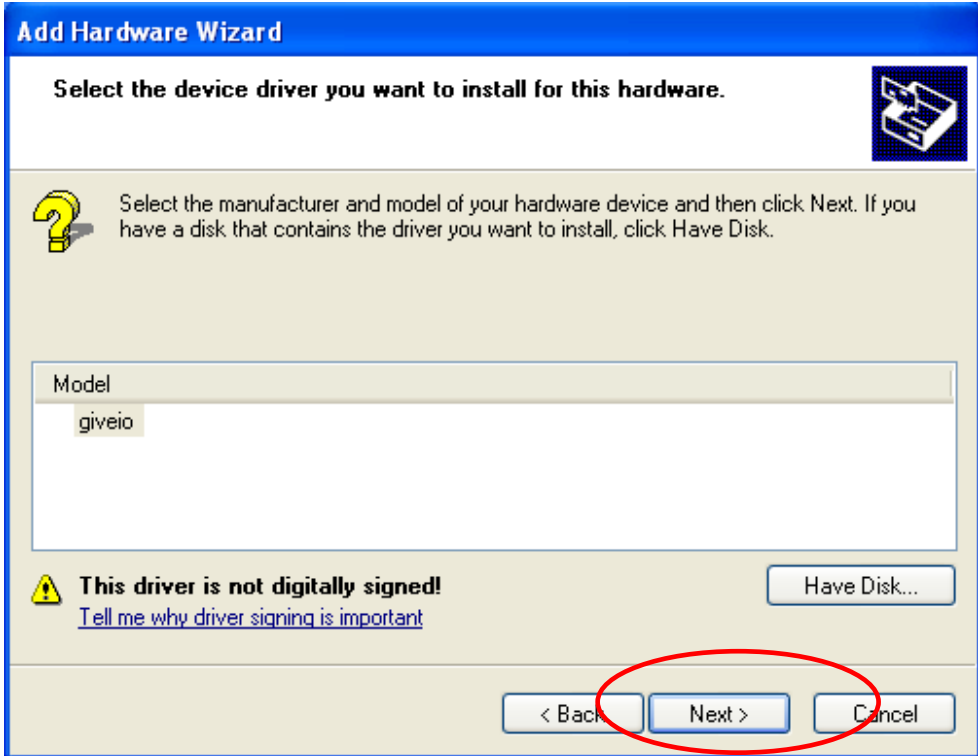


9.2:

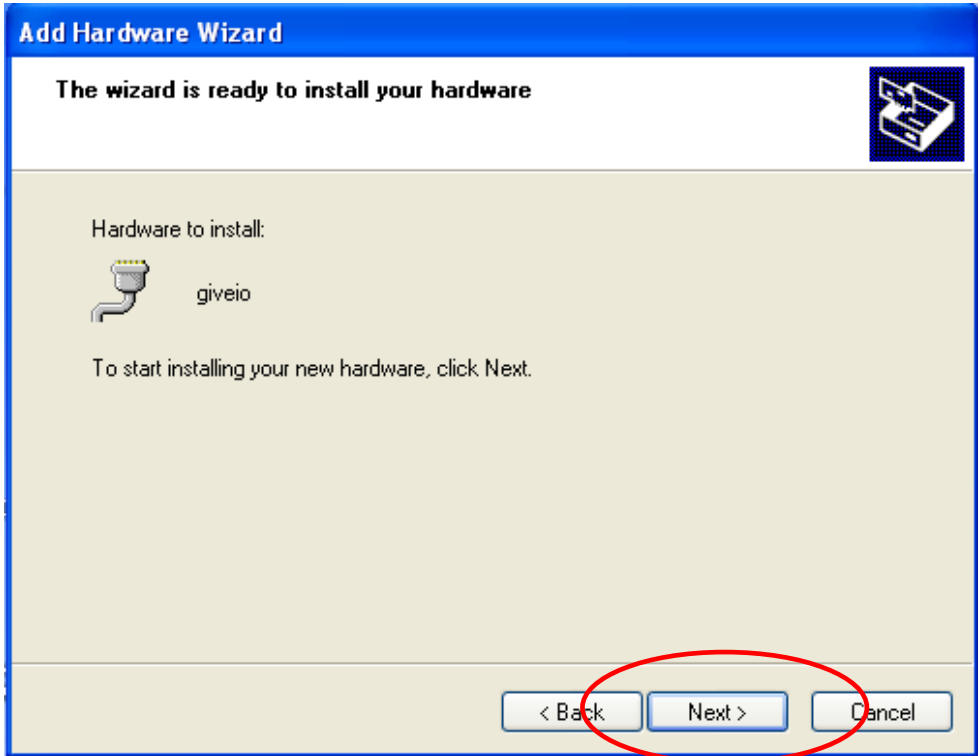


Classification	System and Application FAQ on WinCE PAC				No.	4-002-00	
Author	Tunglu-Yu	Version	1.0.1	Date	2013/05/16	Page	7/15

9.3:

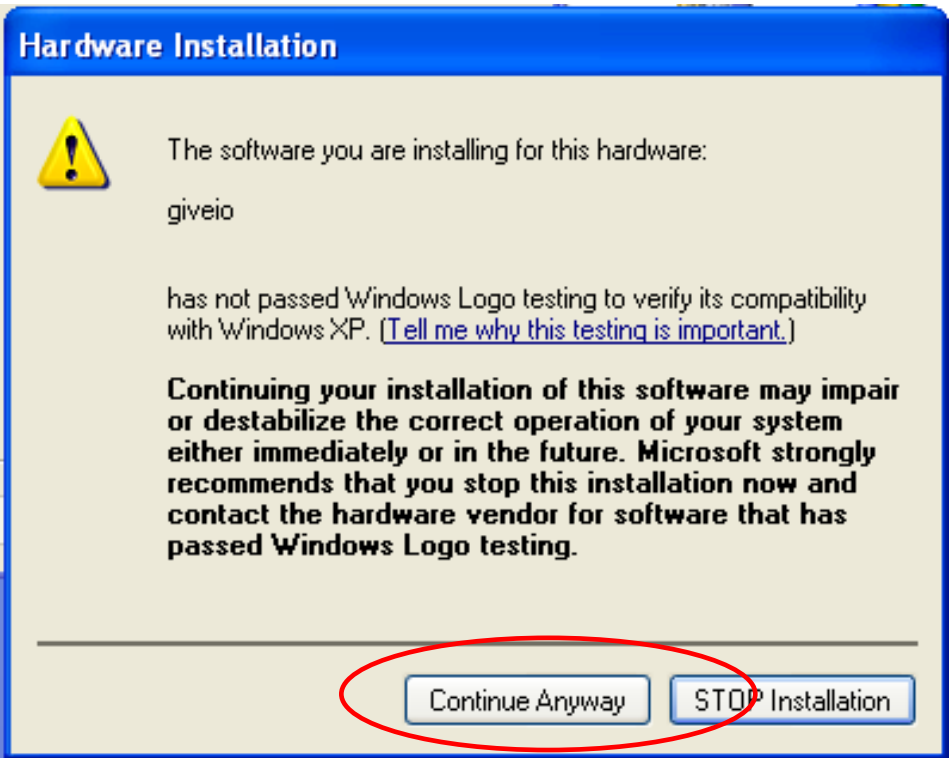


Step 10:

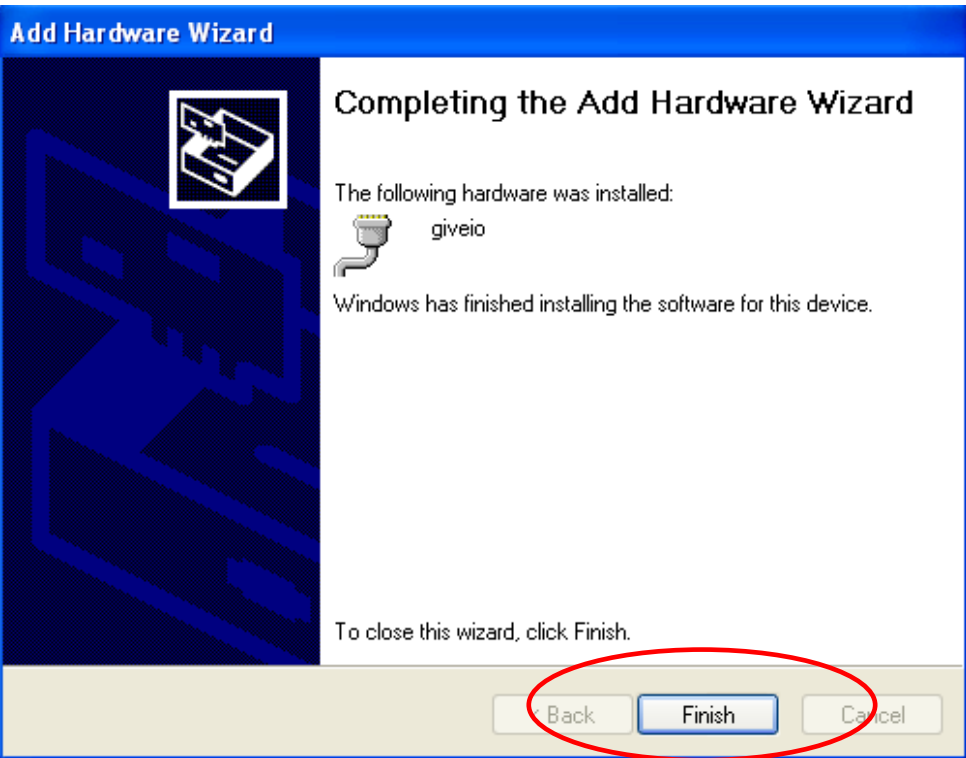


Classification	System and Application FAQ on WinCE PAC				No.	4-002-00	
Author	Tunglu-Yu	Version	1.0.1	Date	2013/05/16	Page	8/15

Step 11:

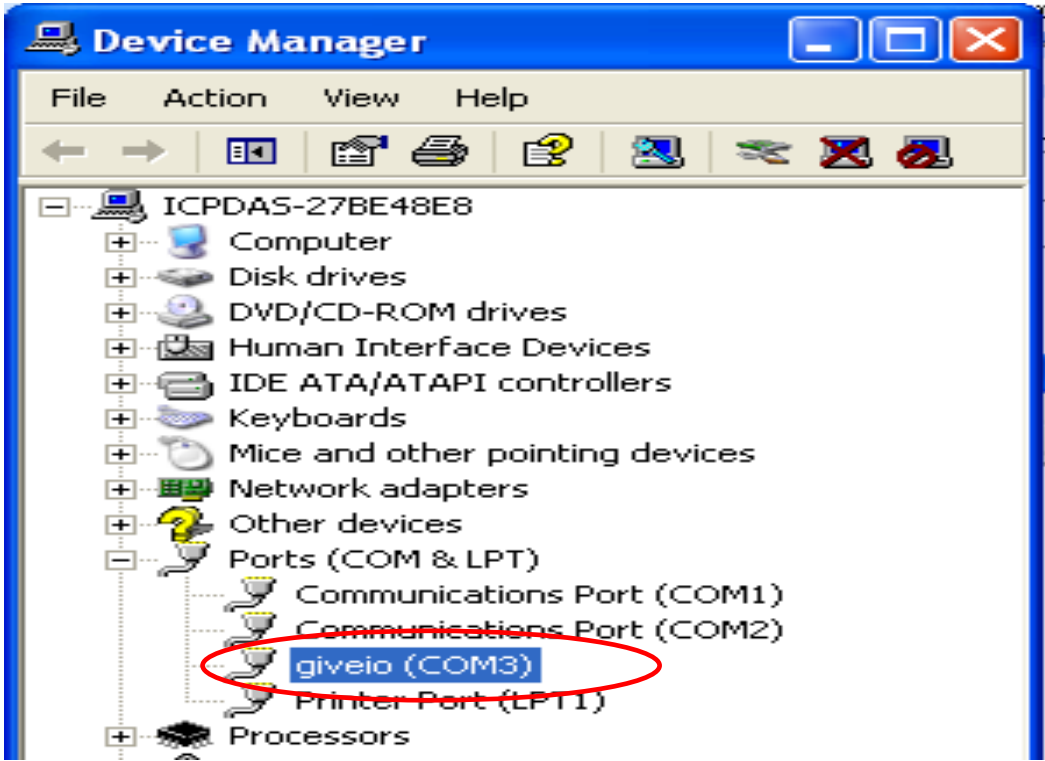


Step 12:

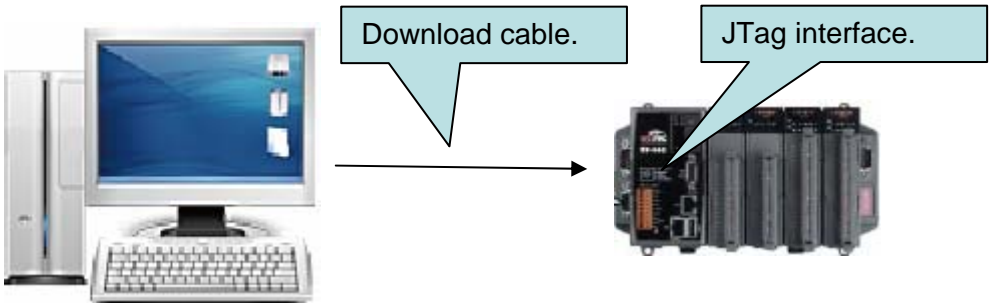


Classification	System and Application FAQ on WinCE PAC				No.	4-002-00	
Author	Tunglu-Yu	Version	1.0.1	Date	2013/05/16	Page	9/15

12.1: Open Control Panel->System->Hardware->Device Manager and the “giveio” device showed be linked in the Ports (COM & LPT) section.



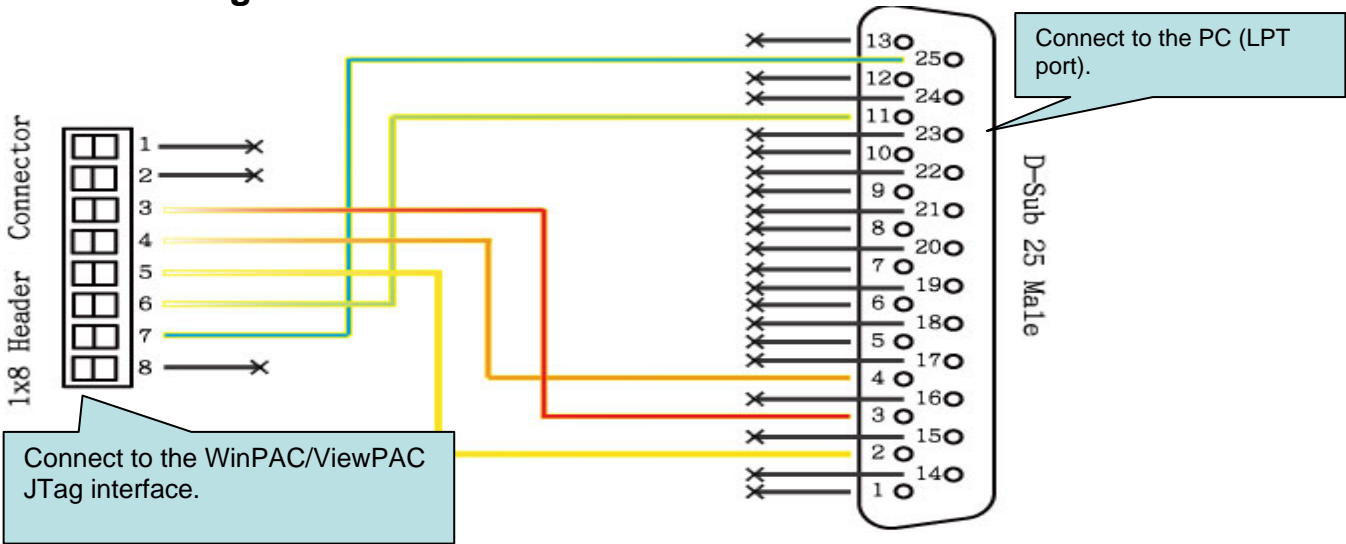
12.2: Connect the PC and the WinPAC/ViewPAC using the download cable.



Classification	System and Application FAQ on WinCE PAC				No.	4-002-00	
Author	Tunglu-Yu	Version	1.0.1	Date	2013/05/16	Page	10/15

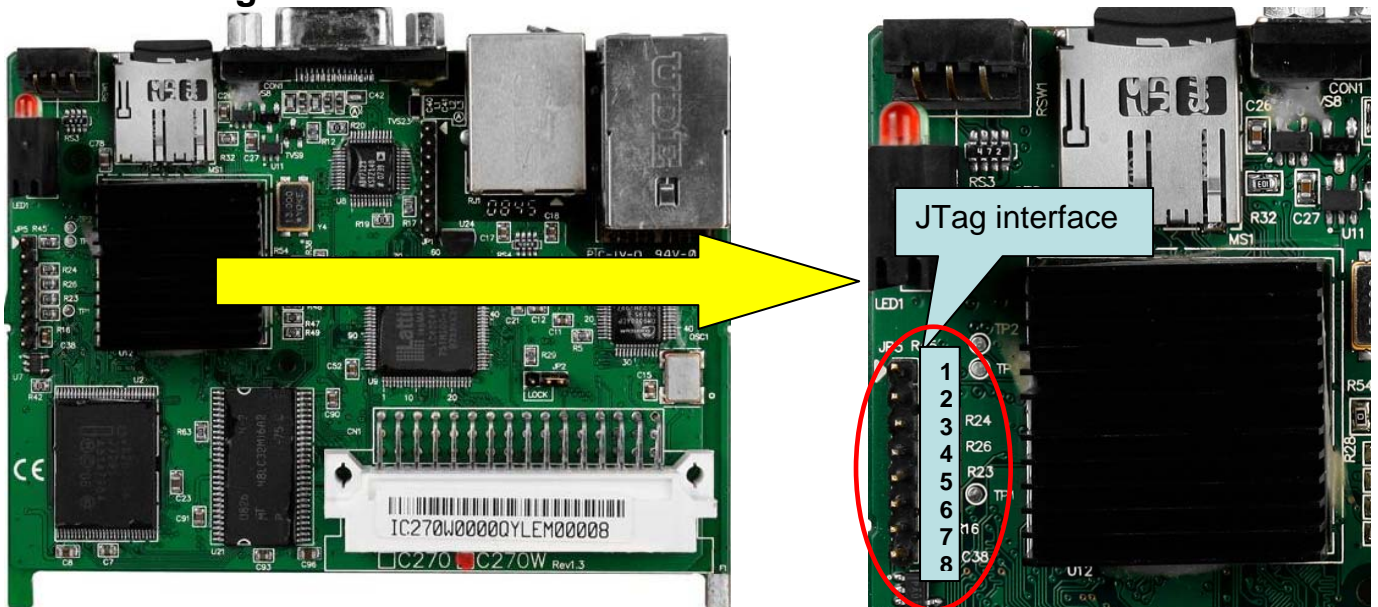
Tips & Warnings

⚠ Pin assignment for the download cable



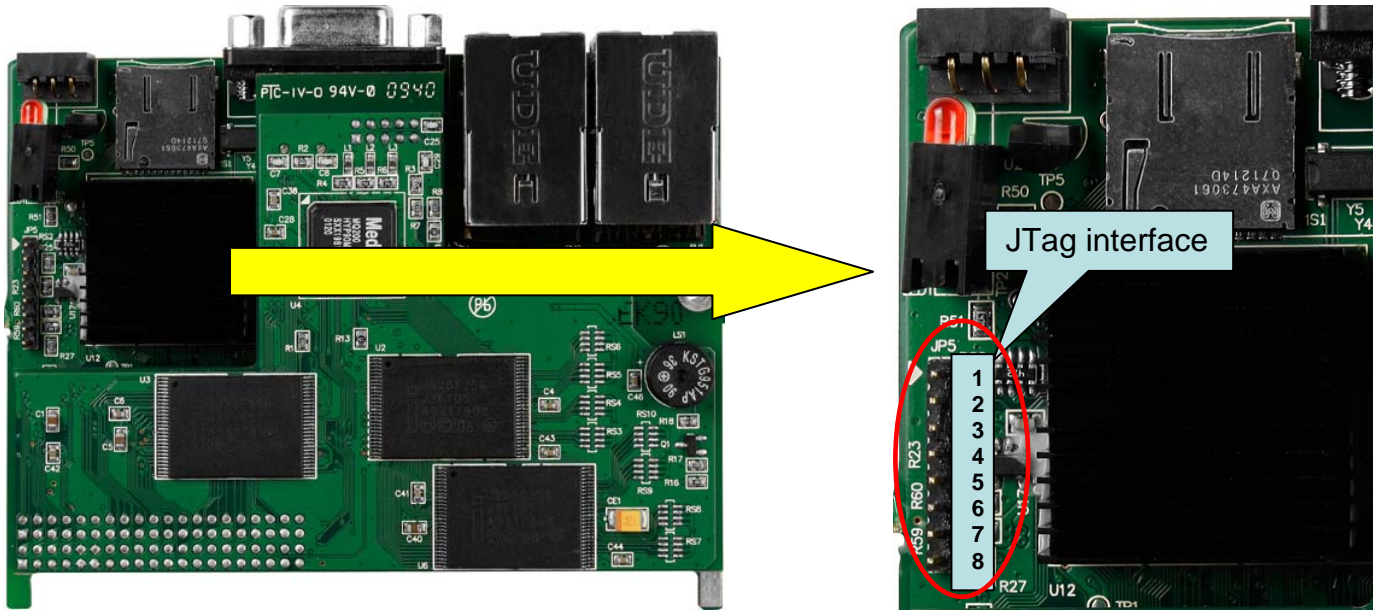
⚠ The JTag interface on different devices.

WP-8x4x JTag interface



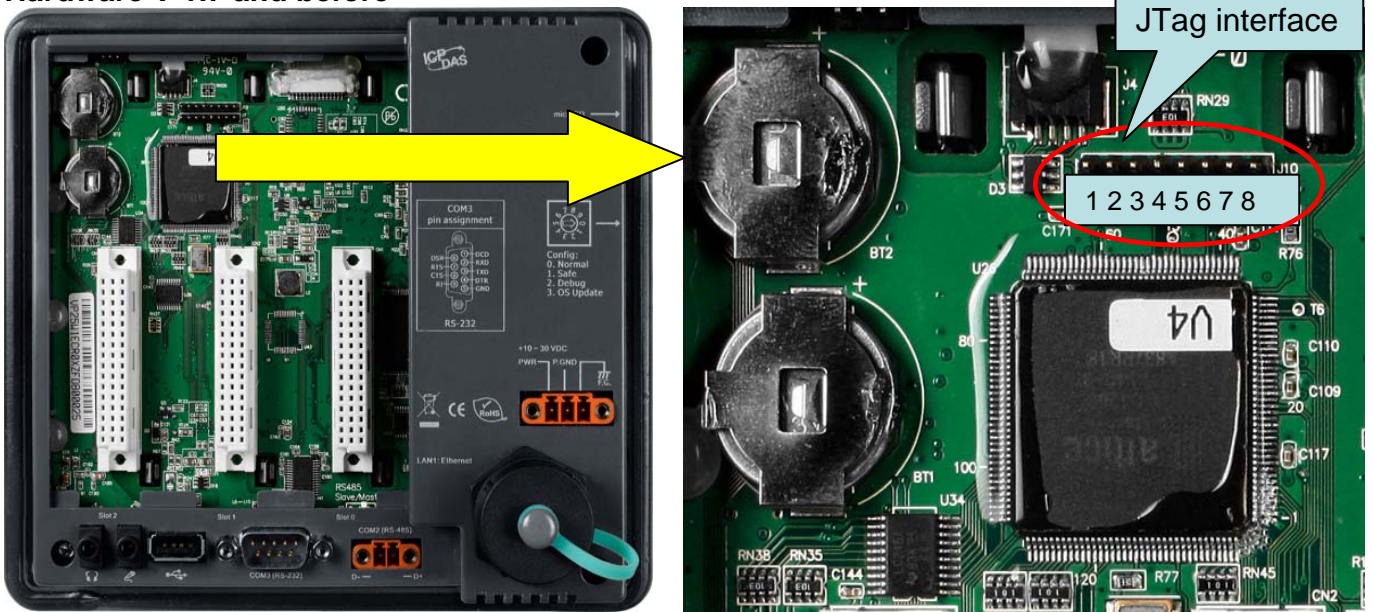
Classification	System and Application FAQ on WinCE PAC				No.	4-002-00	
Author	Tunglu-Yu	Version	1.0.1	Date	2013/05/16	Page	11/15

WP-8x3x JTag interface



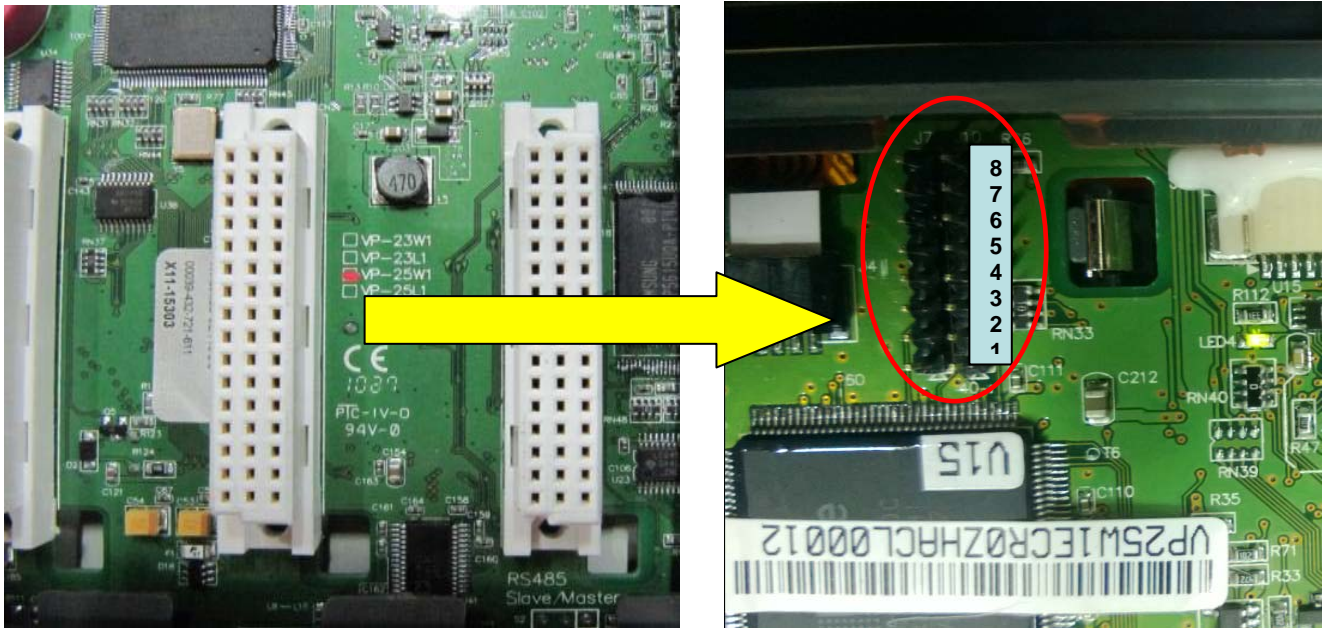
ViewPAC JTag interface

Hardware V 1.7 and before

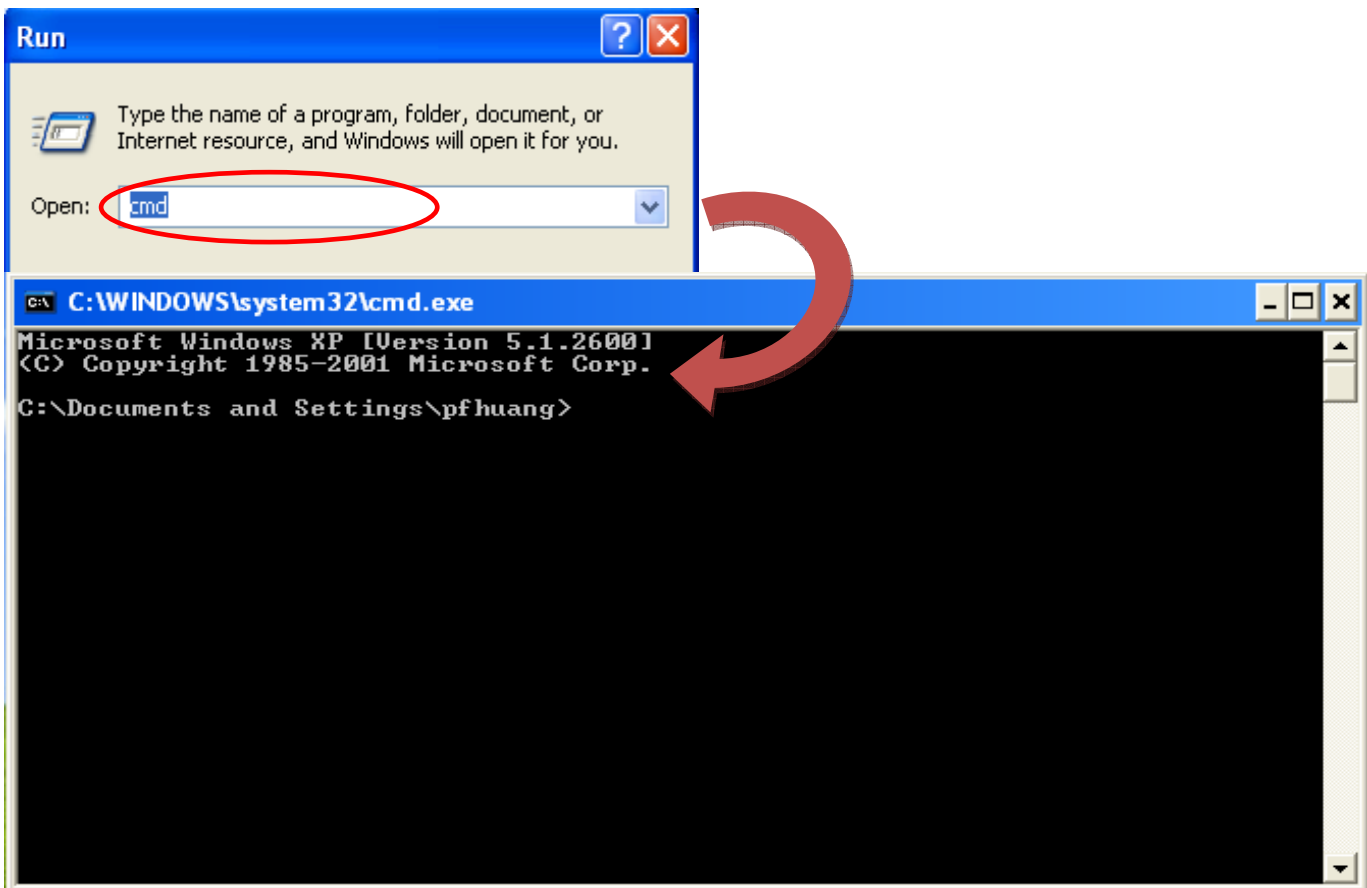


Classification	System and Application FAQ on WinCE PAC				No.	4-002-00	
Author	Tunglu-Yu	Version	1.0.1	Date	2013/05/16	Page	12/15

Hardware V 2.0 and later

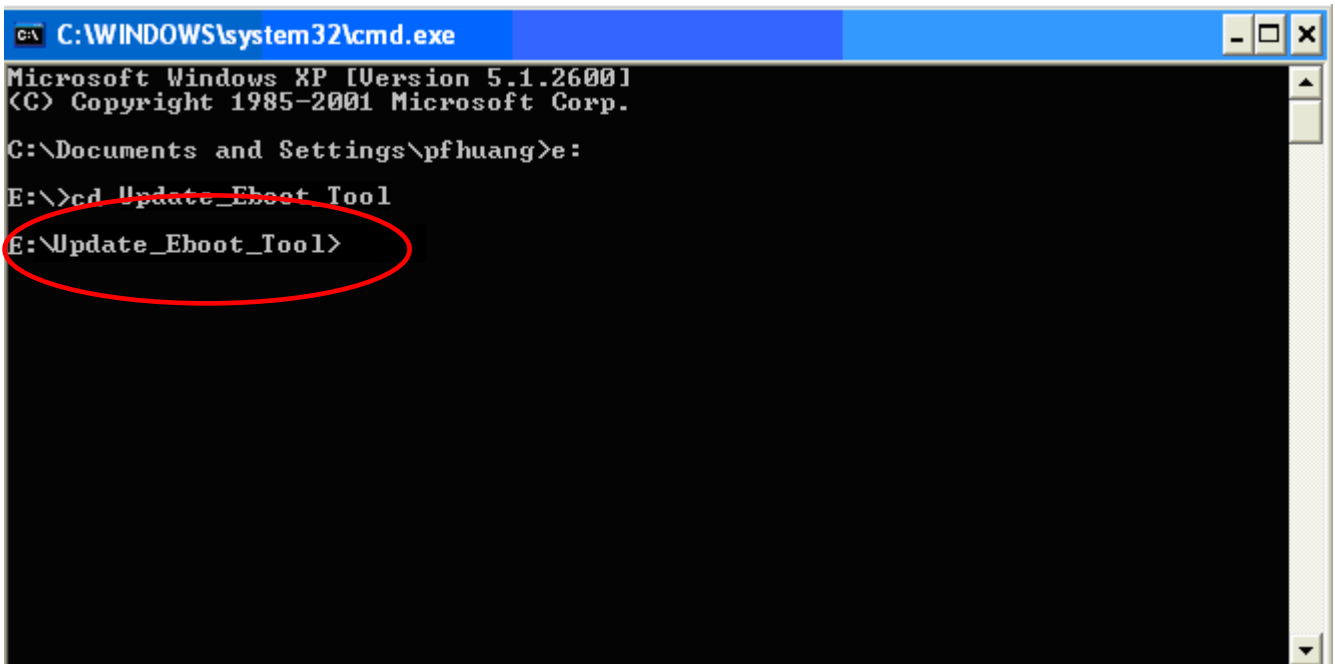


Step 13: Click Start->Run
13.1: Type "cmd" and press enter.



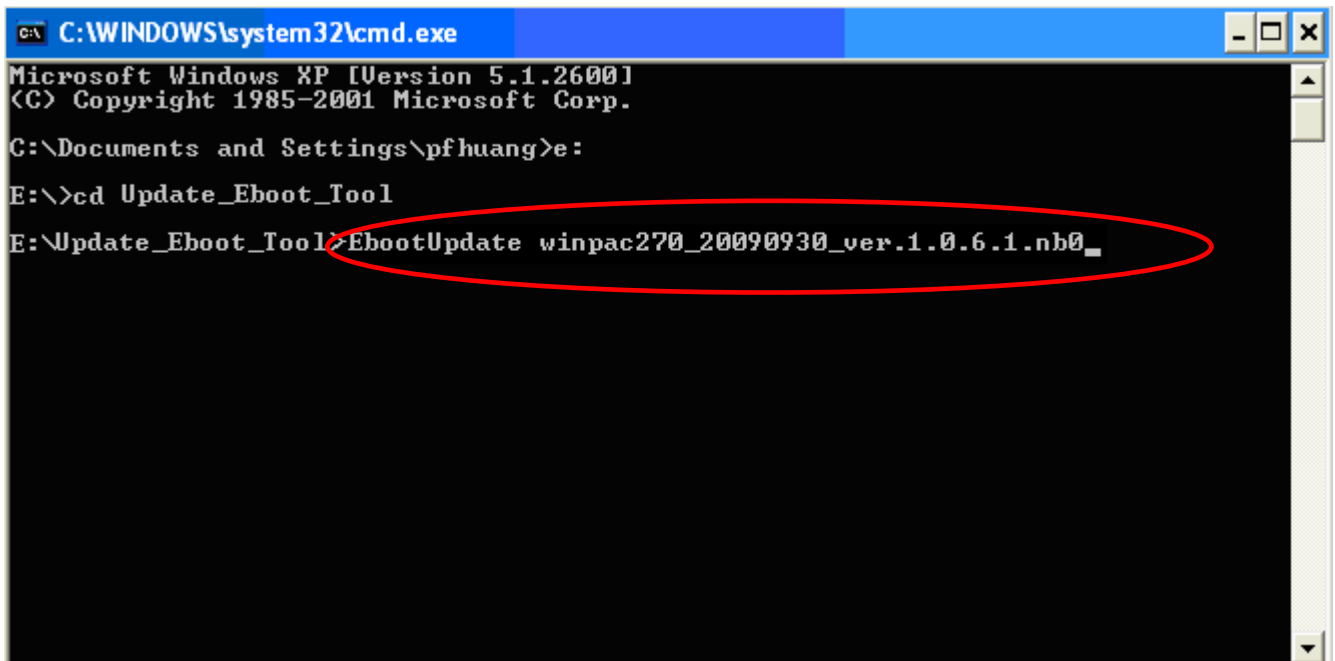
Classification	System and Application FAQ on WinCE PAC				No.	4-002-00	
Author	Tunglu-Yu	Version	1.0.1	Date	2013/05/16	Page	13/15

Step 14: change directory to the "Update_Eboot_Tool" folder.



```
C:\WINDOWS\system32\cmd.exe
Microsoft Windows XP [Version 5.1.2600]
(C) Copyright 1985-2001 Microsoft Corp.
C:\Documents and Settings\pfhuang>e:
E:\>cd Update_Eboot_Tool
E:\Update_Eboot_Tool>
```

Step 15: Enter "EbootUpdate "<The name for the boot loader update package>" (Example: winpac270_20090930_ver.1.0.6.1.nb0)".



```
C:\WINDOWS\system32\cmd.exe
Microsoft Windows XP [Version 5.1.2600]
(C) Copyright 1985-2001 Microsoft Corp.
C:\Documents and Settings\pfhuang>e:
E:\>cd Update_Eboot_Tool
E:\Update_Eboot_Tool>EbootUpdate winpac270_20090930_ver.1.0.6.1.nb0_
```

Classification	System and Application FAQ on WinCE PAC				No.	4-002-00	
Author	Tunglu-Yu	Version	1.0.1	Date	2013/05/16	Page	14/15

Step 16: Press “Y” and wait.

```
E:\Update_Eboot_Tool>EbootUpdate winpac270_20090930_ver.1.0.6.1.nb0_

JFLASH Version 5.01.003
COPYRIGHT (C) 2000 - 2003 Intel Corporation

PLATFORM SELECTION:
Processor=          PXA27x
Development System= Mainstone
Data Version=       1.00.002

PXA27x revision ??
Failed to read the Flash ID. Retrying 4 more times...
Failed to read the Flash ID. Retrying 3 more times...
Found flash type: 28F128J3D
The last 21 percent of image file is all zeros
Would you like to save time by not programming that area? [y/n]:
```

Step 17: When you see the message “Programming done”, reboot the WinPAC/ViewPAC in boot mode “3” and reinstall the OS image using the Eshell.



Please refer to “W4-01-02_how_to_update_OS_image_by_Eshell.pdf” for detailed information.

```
C:\WINDOWS\system32\cmd.exe
Erasing block at address 0
Error, Block erase timed out

E:\Update_Eboot_Tool>EbootUpdate winpac270_20090930_ver.1.0.6.1.nb0_

JFLASH Version 5.01.003
COPYRIGHT (C) 2000 - 2003 Intel Corporation

PLATFORM SELECTION:
Processor=          PXA27x
Development System= Mainstone
Data Version=       1.00.002

PXA27x revision ??
Found flash type: 28F128J3D
The last 21 percent of image file is all zeros
Would you like to save time by not programming that area? [y/n]: y
Erasing block at address 0
Starting programming
Using BUFFER programming mode...
Writing flash at hex address 32ac0, 99.35% done
Programming done

E:\Update_Eboot_Tool>
```

Classification	System and Application FAQ on WinCE PAC				No.	4-002-00	
Author	Tunglu-Yu	Version	1.0.1	Date	2013/05/16	Page	15/15

Revision History

Revision	Date	Description
1.0.1	2013/05/16	NEW: Added support information for VP-4131.
1.0.0	2010/02/12	Initial release