

Classification	System and Application FAQ on WinCE PAC				No.	4-001-03	
Author	Sean Hsu	Version	1.0.0	Date	2010/4/20	Page	1/13

How to update OS image from V1421 to V1501 by Exe file

Applies to:

Platform	OS version	WinPAC/ViewPAC utility version
WP-8x3x	N/A	N/A
WP-8x4x	All versions	All versions
VP-25W1	N/A	N/A
VP-23W1	N/A	N/A

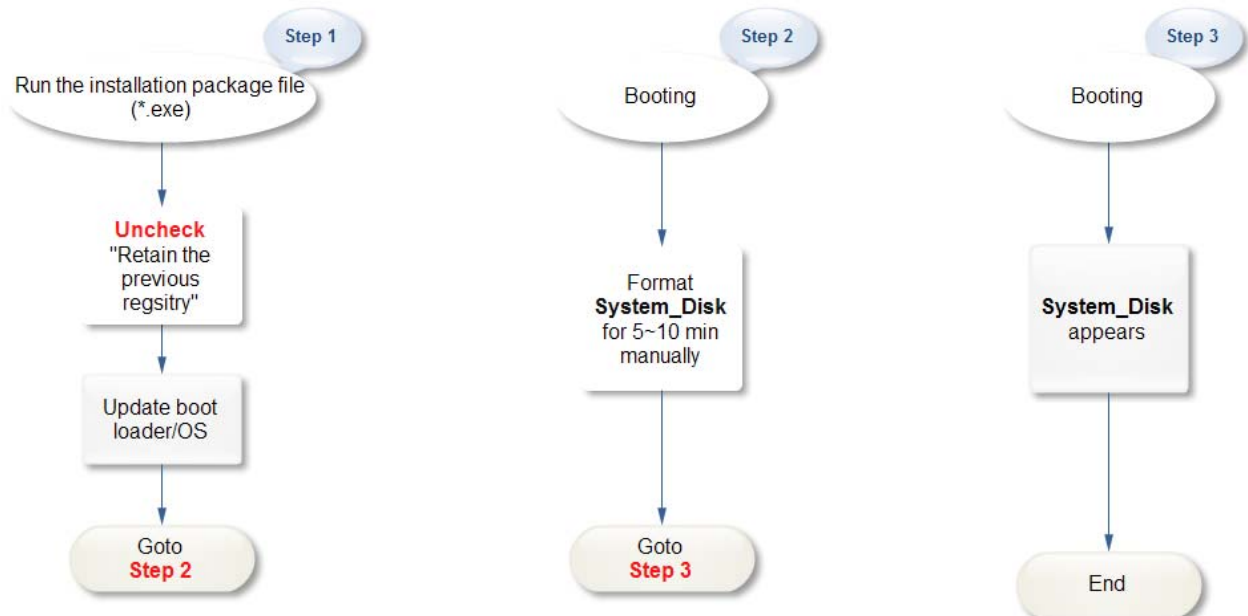
N/A: Not applicable to this platform and OS.

Preparation

1. Preparation of the devices below.

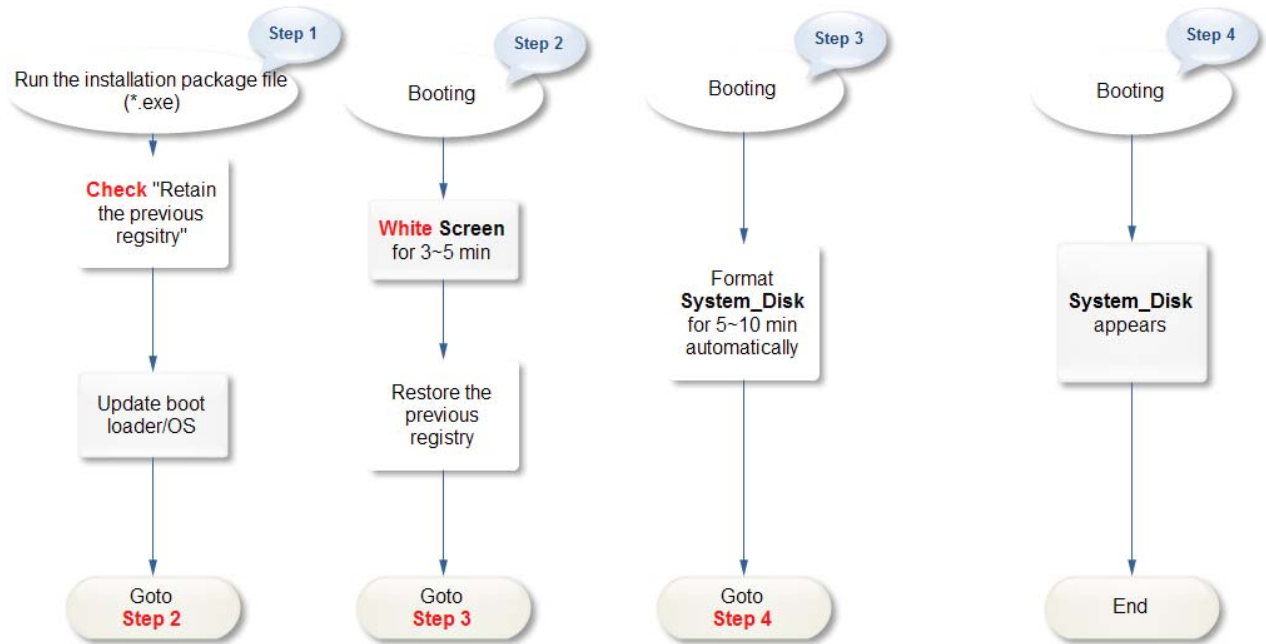
- Monitor/VGA line**
- USB Hub**
- USB Mouse**
- USB Keyboard**
- Micro_SD**

The OS Update flow chart 1



Classification	System and Application FAQ on WinCE PAC				No.	4-001-03	
Author	Sean Hsu	Version	1.0.0	Date	2010/4/20	Page	2/13

The OS Update flow chart 2 – Retain the previous registry



Classification	System and Application FAQ on WinCE PAC				No.	4-001-03	
Author	Sean Hsu	Version	1.0.0	Date	2010/4/20	Page	3/13

To update OS image by Exe file, perform the following steps:

Warnings

 This procedure will reset the registry settings to their default settings, and all of your settings will be lost.



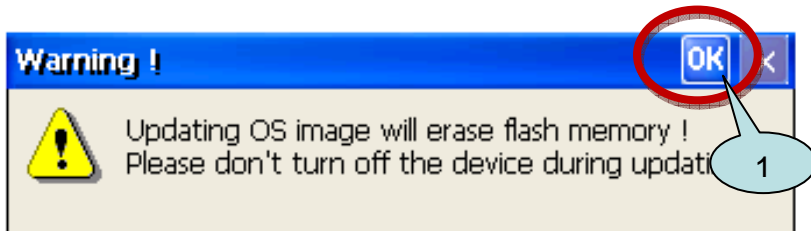
During this time, do not turn off the WinPAC. If the update is cancelled before completion, the WinPAC may become damaged and may require servicing or exchange.

Besides, we recommend that you turn off all other applications before starting to upgrade the OS.

Step 1: Get the WP8x4x_20100415_Ver.1.5.0.1_en.exe installation package file from http://ftp.icpdas.com/pub/cd/winpac/napdos/wp-8x4x_ce50/os_image/update_from_file/en/

Copy this file to System_Disk or MicroSD of the WinPAC.

Step 2: Run the installation package file.



Step 3: Click the “Update Now” button

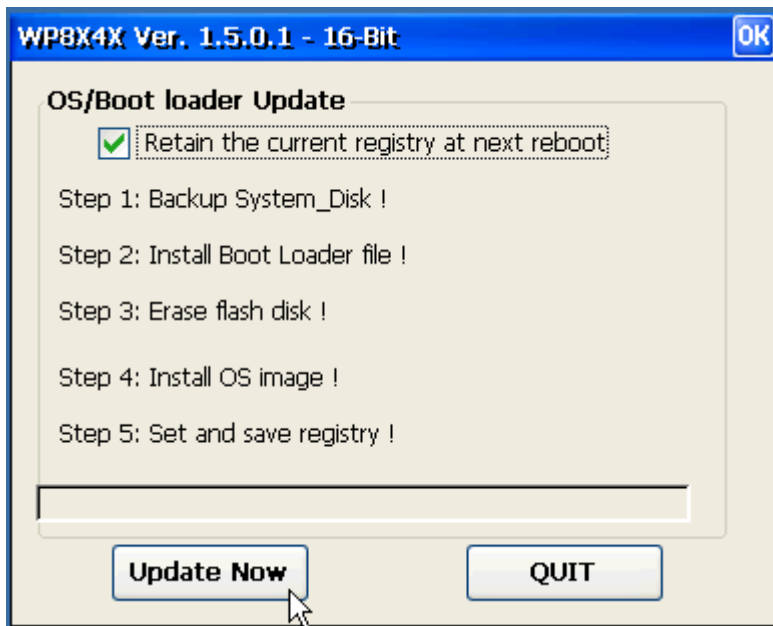


Classification	System and Application FAQ on WinCE PAC				No.	4-001-03	
Author	Sean Hsu	Version	1.0.0	Date	2010/4/20	Page	4/13

Note:

If the previous registry needs to retain, please check the “**Retain the current registry at next reboot**” checkbox.

If check this item, the registry will be backup to Micro_SD after clicking the “Update Now” button.



Step 4:

Backup the data on \System_disk automatically.

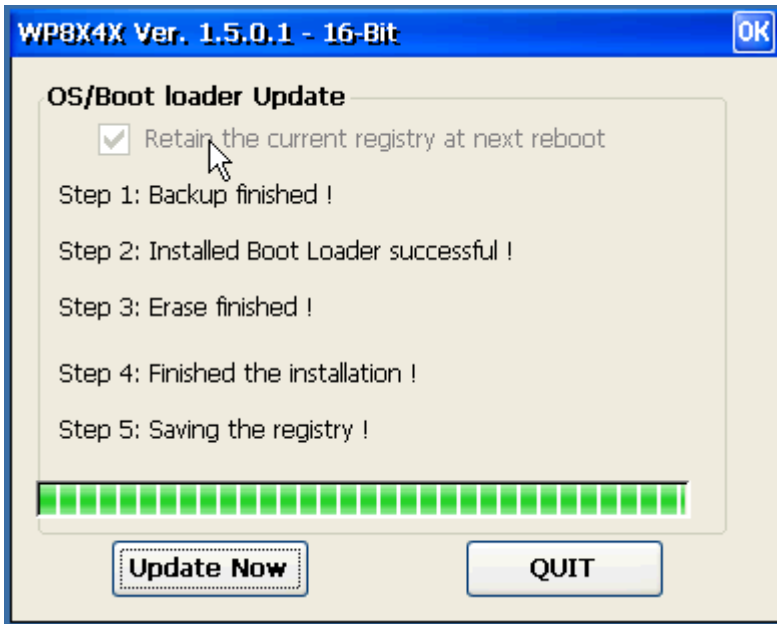
Step 5:

After backup the System_Disk, System_Disk will be erased.

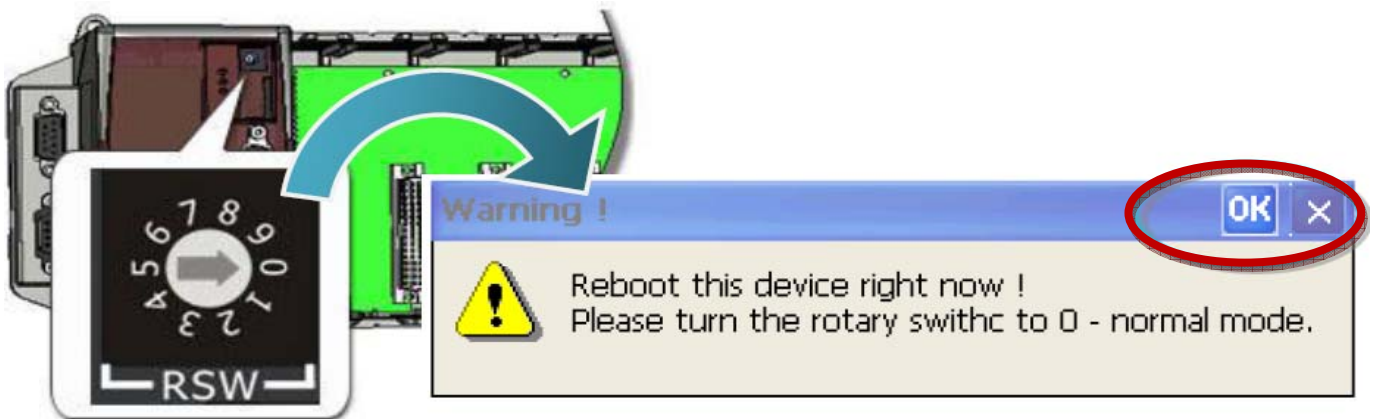
Step 6:

Update Boot loader/OS/Registry.

Classification	System and Application FAQ on WinCE PAC				No.	4-001-03	
Author	Sean Hsu	Version	1.0.0	Date	2010/4/20	Page	5/13



Step 7: After completing the above-mentioned tasks, the “**Warning !**” dialog box will appear as following. Before clicking the “**OK**” button, you must turn the rotary switch to the “**0**” position first.

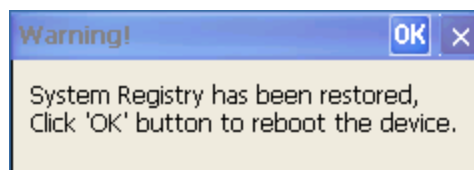


After reboot, the monitor will become **WHITE** for 3~5 minutes.

Note:

If you have checked the “**Retain the current registry**” checkbox, the registry will be restored back to the system after reboot.

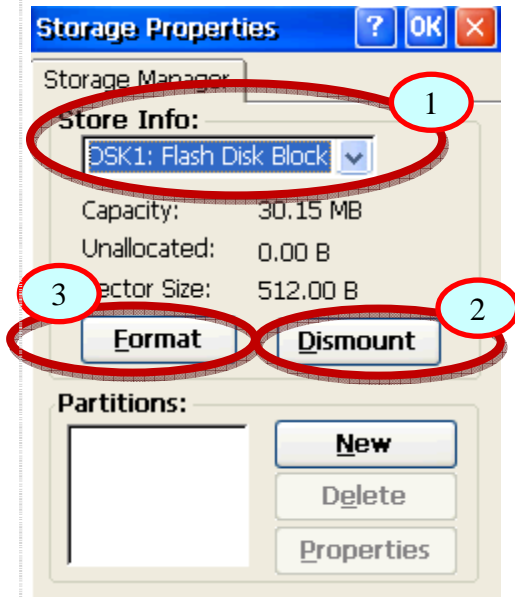
After finish to restore the registry, the system asks you to click ‘OK’ button to reboot again.



Classification	System and Application FAQ on WinCE PAC				No.	4-001-03	
Author	Sean Hsu	Version	1.0.0	Date	2010/4/20	Page	6/13

Step 8: Click Start->Control Panel->**Storage Manager**

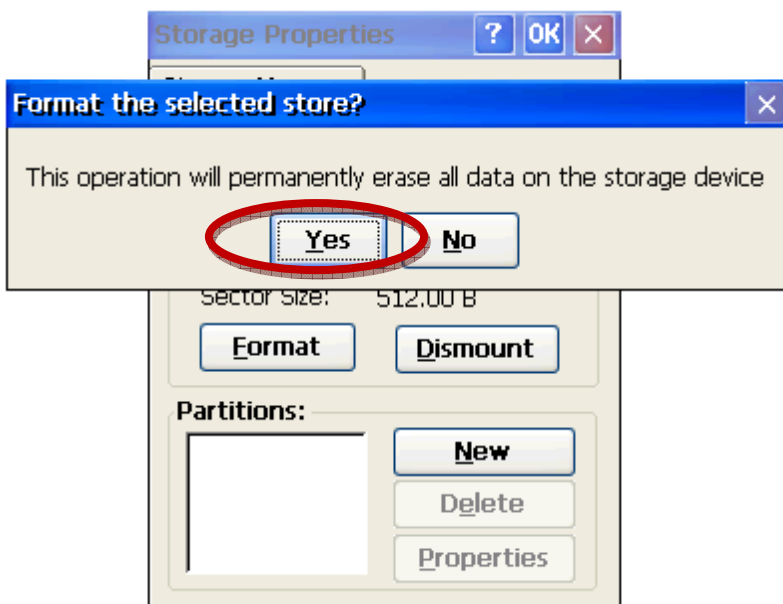
Step 9: Select "DSK1: Flash Disk Block" and click "Dismount" and then "Format" button.



Note:

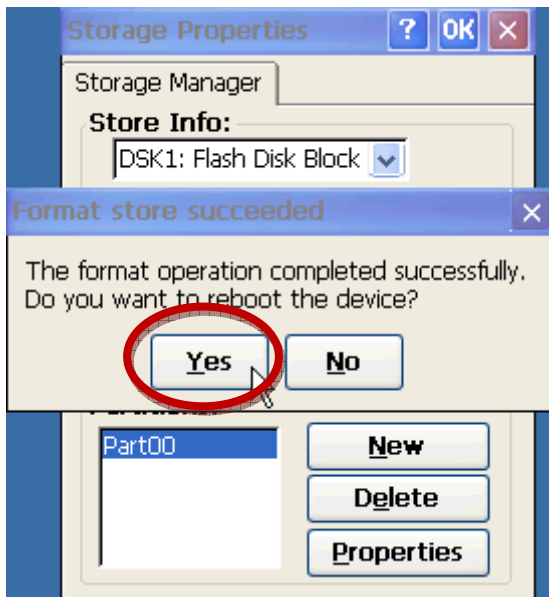
If you can't see the "DSK1: Flash Disk Block", go to the page 9

Click **Yes** button and wait 5~10 minutes for formatting disk.



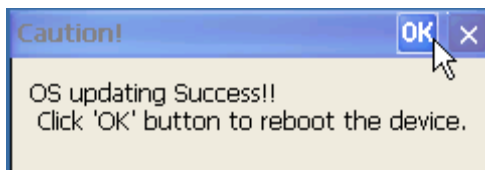
Classification	System and Application FAQ on WinCE PAC				No.	4-001-03	
Author	Sean Hsu	Version	1.0.0	Date	2010/4/20	Page	7/13

Step 10: While the format operation is completed successfully. Click 'Yes' to reboot the device.



Step 11:

After reboot, the data will be restored back to System_Disk.
Click "OK" to finish the restoration.



Step 12: Check the WinPAC OS version

Run the WinPAC Utility, and select the "System Information" tab to check the current OS version.

Classification	System and Application FAQ on WinCE PAC				No.	4-001-03	
Author	Sean Hsu	Version	1.0.0	Date	2010/4/20	Page	8/13

WinPAC Utility [2.0.1.5]

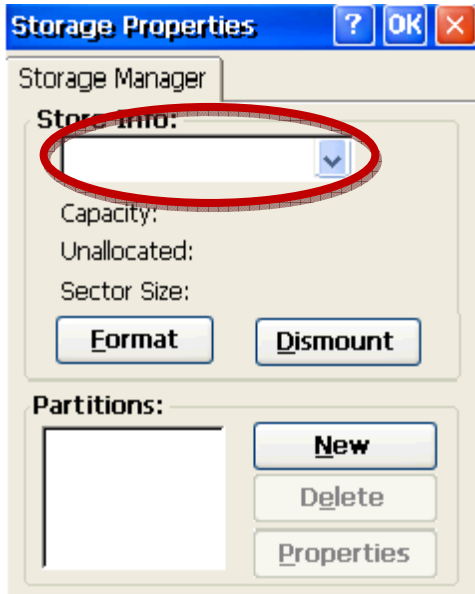
File Help Configuration

System Setting Ethernet Setting FTP Setting **System Information** Auto Execution Multi-serial port

Slot 0:	<input type="text"/>	Module Type:	WP-844x (96MB)
Slot 1:	<input type="text"/>	Flash Type(System_disk):	Intel J3 95ns X 1
Slot 2:	8112	Flash Type(OS):	Intel J3 95ns X 2
Slot 3:	<input type="text"/>	64-bit Serial Number:	01-63-F7-80-12-00-00-8C
Slot 4:	<input type="text"/>	OS Version:	1.5.0.1, 2010/04/15 14:54:05
Slot 5:	<input type="text"/>	Eboot Version:	1.2.0.1, 2010/04/16 17:26:46
Slot 6:	<input type="text"/>	Backplane Version:	1.0.4.0
Slot 7:	<input type="text"/>	CPU Version:	1.0.8.0
		WinPacSDK Version:	1.0.9.4
		WinPacNet Version:	1.2.0.6
		.NET Framework Version:	2.0.7045.00
		SQL CE Version:	3.5.5386.0
		Last Save Date:	Thursday, October 22, 2009

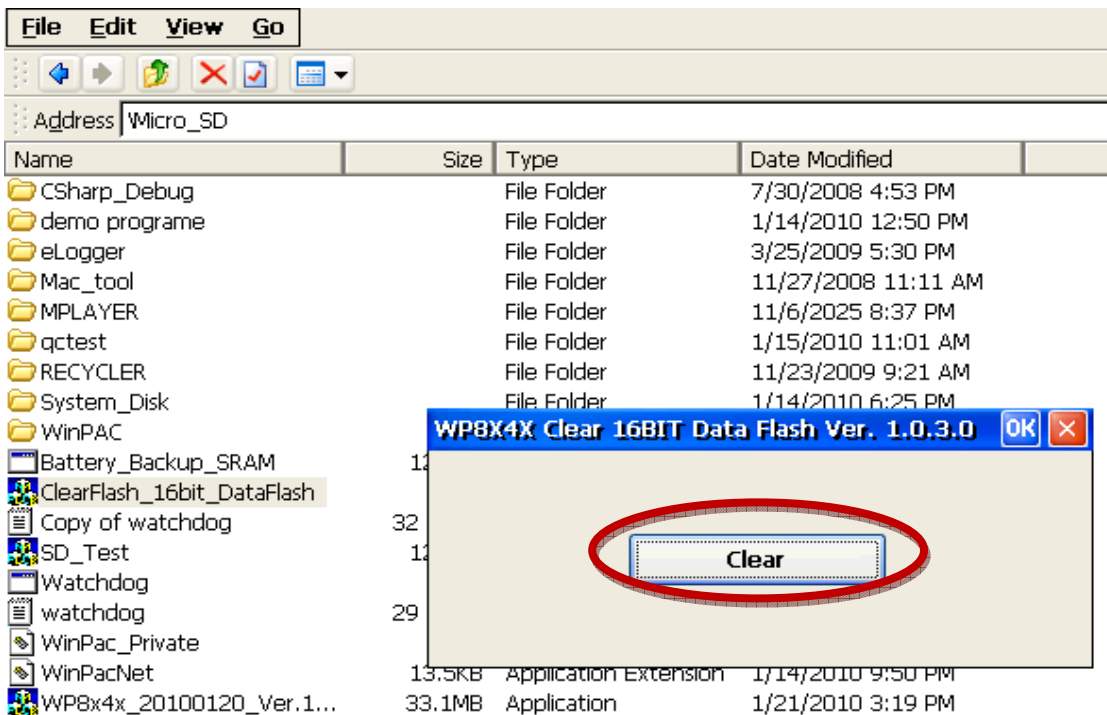
Classification	System and Application FAQ on WinCE PAC				No.	4-001-03	
Author	Sean Hsu	Version	1.0.0	Date	2010/4/20	Page	9/13

***If you can't see the DSK1: Flash Disk Block, please follow the steps as following.**



Step1: Double-click **ClearFlash_16bit_DataFlash.exe** and click "Clear" button.

Note: ClearFlash_16bit_DataFlash.exe is located on the shipped CD:\napdos\wp-8x4x_ce50\misc\ClearFlash\Intel



Classification	System and Application FAQ on WinCE PAC				No.	4-001-03	
Author	Sean Hsu	Version	1.0.0	Date	2010/4/20	Page	10/13

Step2: Wait a few minute to erase the Flash disk. **Reboot** the WinPAC after erasing.

```

File Edit Help
Bytes Per Block ..... 0x20000
Number of Blocks ..... 0xf8
Flash Type ..... 0x1
Data Bytes Per Sector .. 0x200
Sectors Per Block ..... 0x100

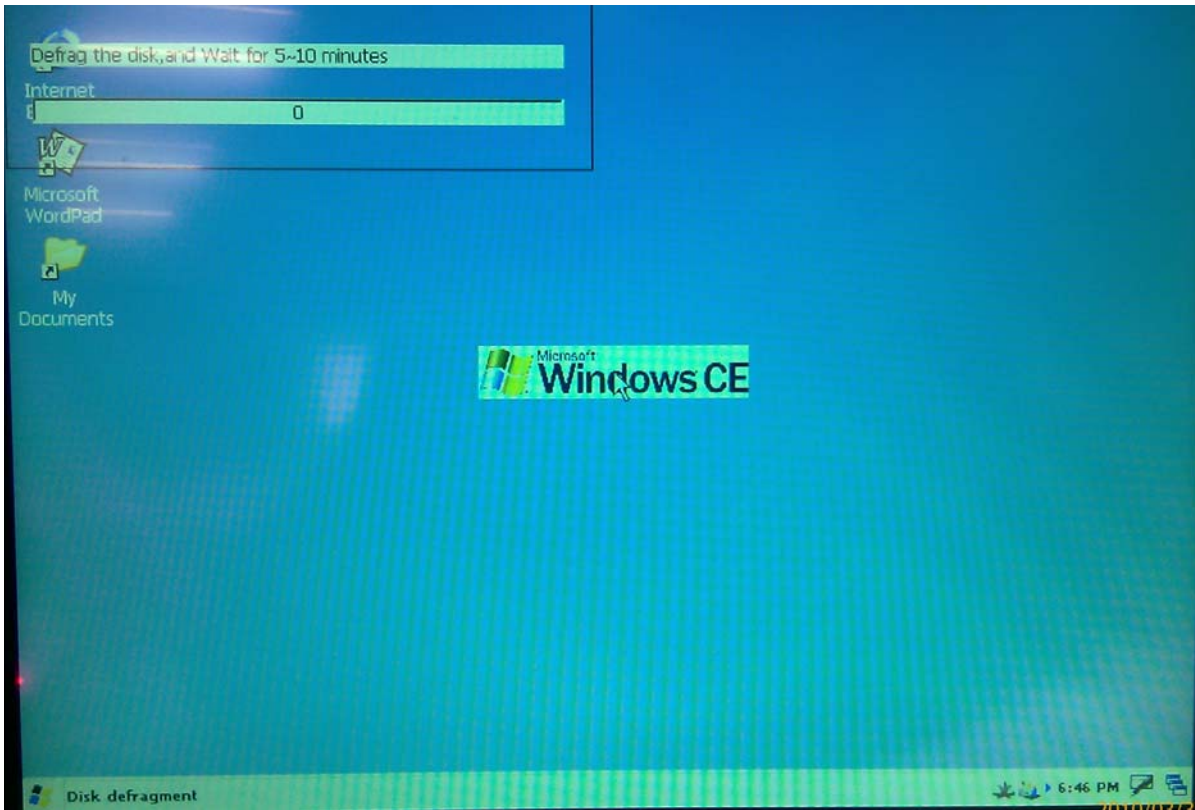
@w<1> <2> <3> <4> <5> <6> <7> <8>
@w<9> <a> <b> <c> <d> <e> <f> <10>
@w<11> <12> <13> <14> <15> <16> <17> <18>
@w<19> <1a> <1b> <1c> <1d> <1e> <1f> <20>
@w<21> <22> <23> <24> <25> <26> <27> <28>
@w<29> <2a> <2b> <2c> <2d> <2e> <2f> <30>
@w<31> <32> <33> <34> <35> <36> <37> <38>
@w<39> <3a> <3b> <3c> <3d> <3e> <3f> <40>
@w<41> <42> <43> <44> <45> <46> <47> <48>
@w<49> <4a> <4b> <4c> <4d> <4e> <4f> <50>
@w<51> <52> <53> <54> <55> <56> <57> <58>
@w<59> <5a> <5b> <5c> <5d> <5e> <5f> <60>
@w<61> <62> <63> <64> <65> <66> <67> <68>
@w<69> <6a> <6b> <6c> <6d> <6e> <6f> <70>
@w<71> <72> <73> <74> <75> <76> <77> <78>
@w<79> <7a> <7b> <7c> <7d> <7e> <7f> <80>
@w<81> <82> <83> <84> <85> <86> <87> <88>
@w<89> <8a> <8b> <8c> <8d> <8e> <8f> <90>
@w<91> <92> <93> <94> <95> <96> <97> <98>
@w<99> <9a> <9b> <9c> <9d> <9e> <9f> <a0>
@w<a1> <a2> <a3> <a4> <a5> <a6> <a7> <a8>
@w<a9> <aa> <ab> <ac> <ad> <ae> <af> <b0>
@w<b1> <b2> <b3> <b4> <b5> <b6> <b7> <b8>
@w<b9> <ba> <bb> <bc> <bd> <be> <bf> <c0>
@w<c1> <c2> <c3> <c4> <c5> <c6> <c7> <c8>
@w<c9> <ca> <cb> <cc> <cd> <ce> <cf> <d0>
@w<d1> <d2> <d3> <d4> <d5> <d6> <d7> <d8>
@w<d9> <da> <db> <dc> <dd> <de> <df> <e0>
@w<e1> <e2> <e3> <e4> <e5> <e6> <e7> <e8>
@w<e9> <ea> <eb> <ec> <ed> <ee> <ef> <f0>
@w<f1> <f2> <f3> <f4> <f5> <f6> <f7> <f8>
Erase finished

```

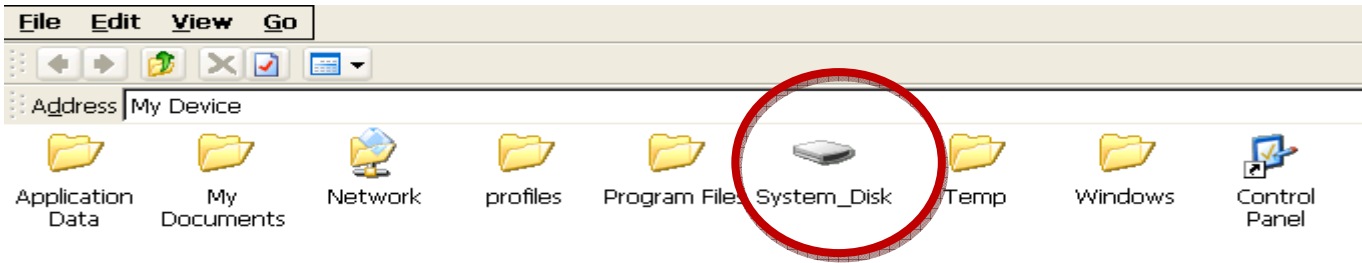
Step 3: After reboot, the monitor will become **WHITE** for a while.

Step 4: Reboot your WinPac **again**. The System_Disk will be formatted for 5~10 minute.

Classification	System and Application FAQ on WinCE PAC				No.	4-001-03	
Author	Sean Hsu	Version	1.0.0	Date	2010/4/20	Page	11/13

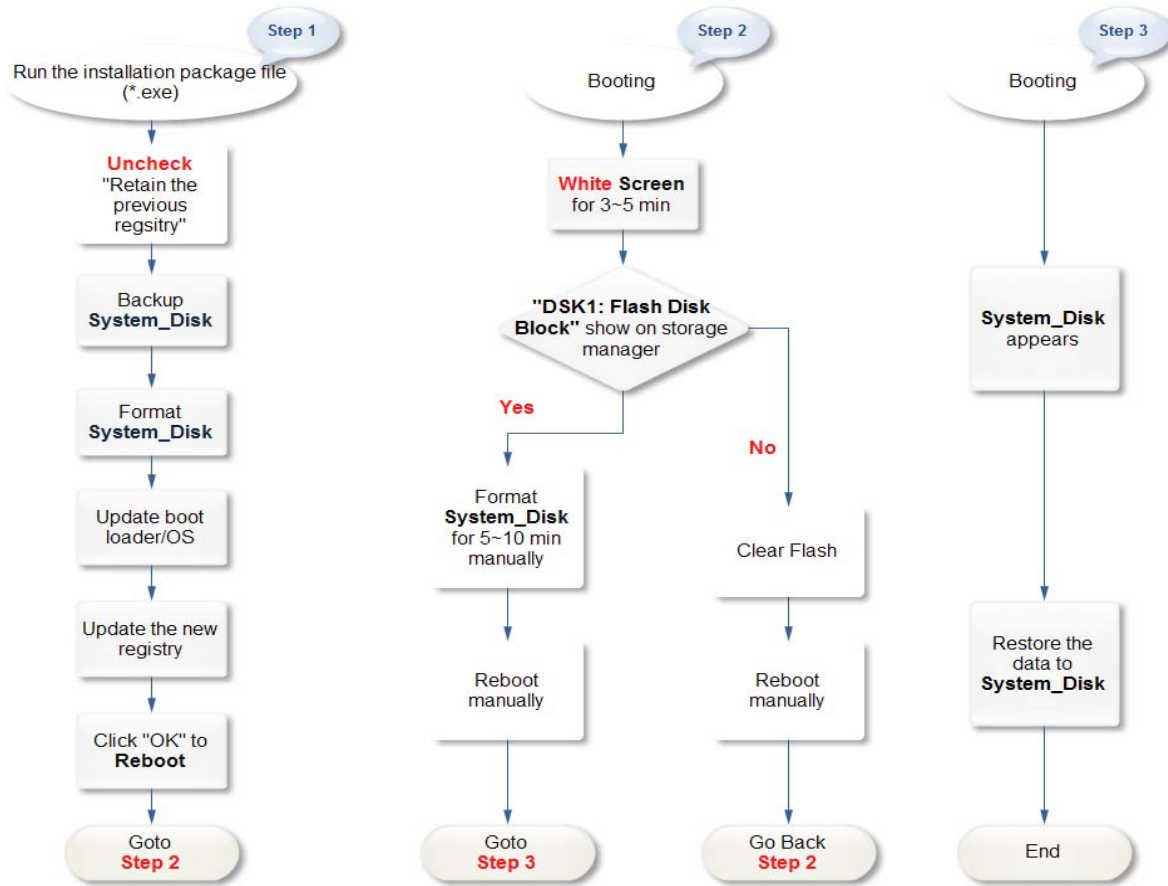


After the format procedure has completed, the System_disk will appear.



Classification	System and Application FAQ on WinCE PAC				No.	4-001-03	
Author	Sean Hsu	Version	1.0.0	Date	2010/4/20	Page	12/13

The detail OS Update flow chart 1



Classification	System and Application FAQ on WinCE PAC				No.	4-001-03	
Author	Sean Hsu	Version	1.0.0	Date	2010/4/20	Page	13/13

The detail OS Update flow chart 2 – Retain the previous registry

